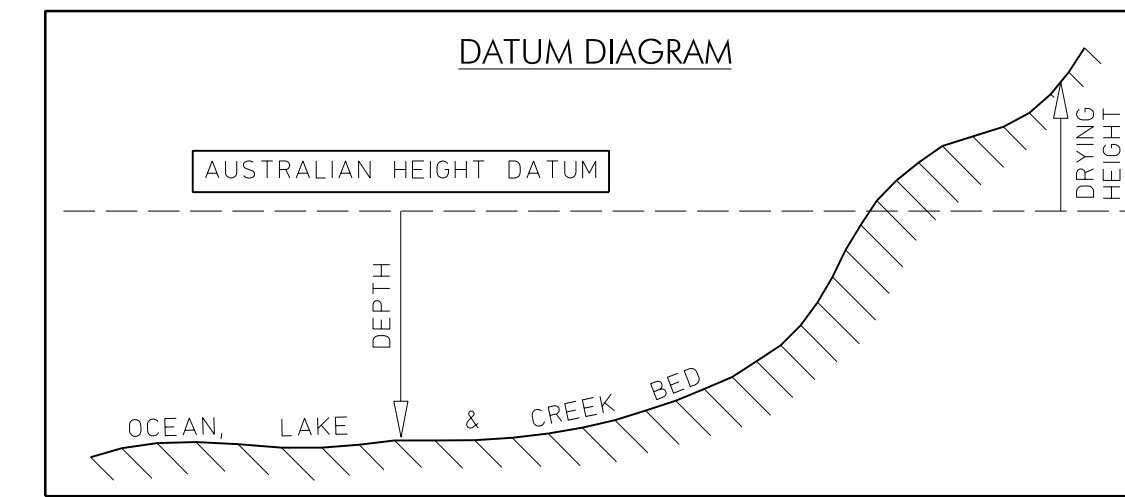


SCHEDULE OF PLAN SHEETS		
SHEET No/s IN SET	REDUCTION RATIO/S	SHEET DESCRIPTION
1/15	1:15,000	MAIN INDEX SHEET, LEGENDS, NOTES, TIDAL PLANES & DATUM DIAGRAM
2-4/15	1:5,000	BATHYMETRY & CROSS SECTION LOCATIONS (---)
5-8/15	1:2,000	BATHYMETRY (---)
9-15/15	1:1000 HOR 1:200 VER	RIVER & CREEK SECTIONS



NOTES

SURVEY DATES - THIS SURVEY WAS UNDERTAKEN FROM 28 AUGUST TO 4 SEPTEMBER 2007.

DEPTHs - (eg d_1) ARE SHOWN IN METRES AND DECIMETRES BELOW AUSTRALIAN HEIGHT DATUM.

DRYING HEIGHTS - (eg d_2) ARE SHOWN IN METRES AND DECIMETRES ABOVE AUSTRALIAN HEIGHT DATUM.

BATHYMETRY - ENTRANCE AREA AND GRIFFINS BAY BY S. HOLTZNAGEL IN ZODIAC SURVEY VESSEL USING RTK GPS AND 200KHZ CEESTAR ECHO SOUNDER. MAIN BASIN BY S. HOLTZNAGEL AND S. MURRAY IN SEACAN SURVEY VESSEL USING OMNISTAR DGPS AND ODOM ECHO TRAC MK3 ECHO SOUNDER. MAIN BASIN AND BAYS BY J. FLOYD AND M. FITZHENRY USING OMNISTAR DGPS, RAYTHEON DE719D MK2 ECHO SOUNDER AND MANUAL DEPTH OBSERVATIONS. MAIN BASIN AND TRIBUTARIES BY S. MURRAY AND S. SAUNDERS USING OMNISTAR DGPS AND 200KHZ CEESTAR ECHO SOUNDER. ADDITIONAL LAKE FORESHORE BY S. MURRAY AND J. GILMOUR USING RTK GPS USING PM15097 AS THE BASE STATION.

RIVER & CREEK SECTIONS - HAVE ALL BEEN DRAWN AS SEEN LOOKING DOWNSTREAM. CROSS SECTION CHAINAGES INCREASE IN THE UPSTREAM DIRECTION.

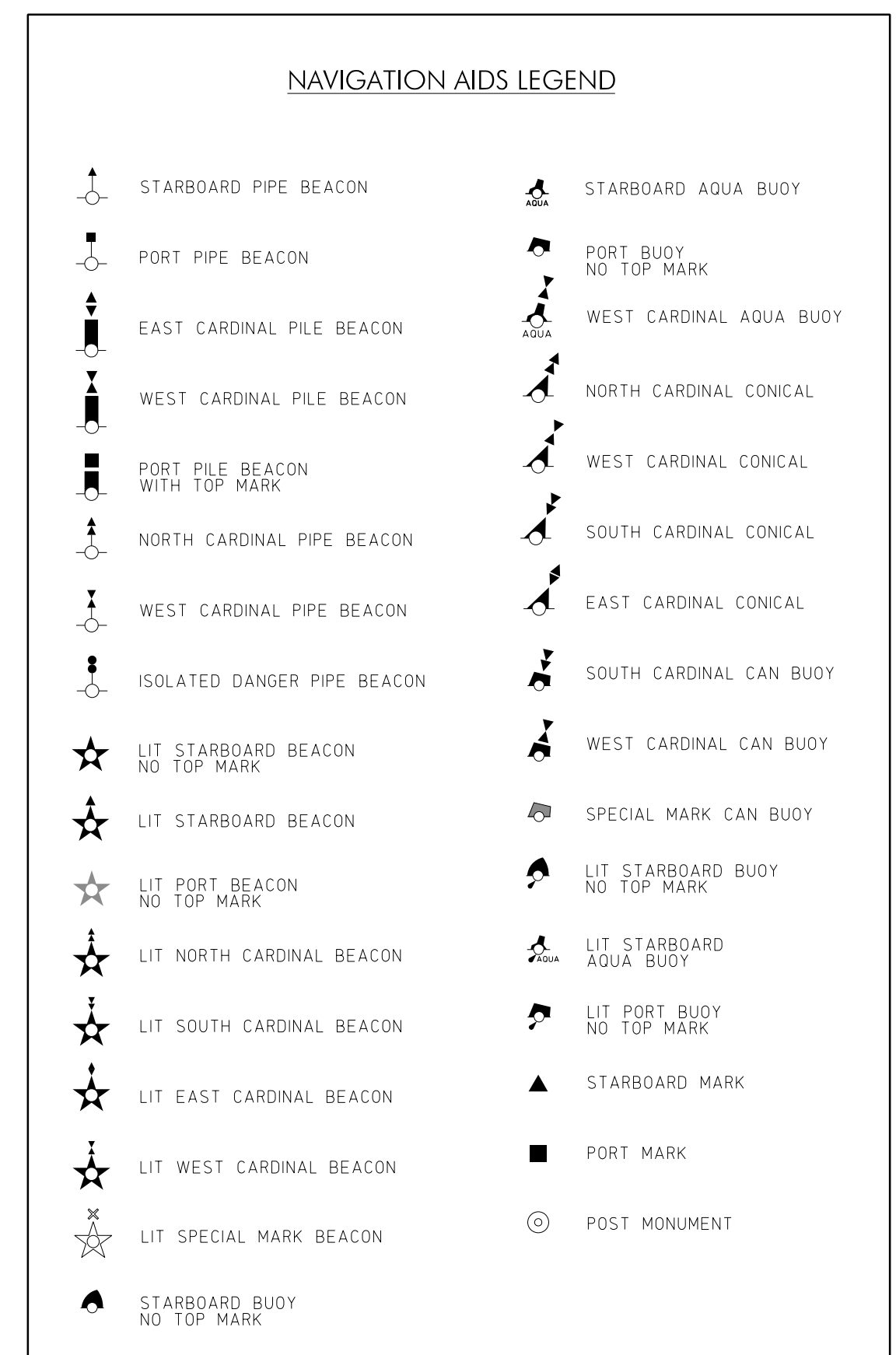
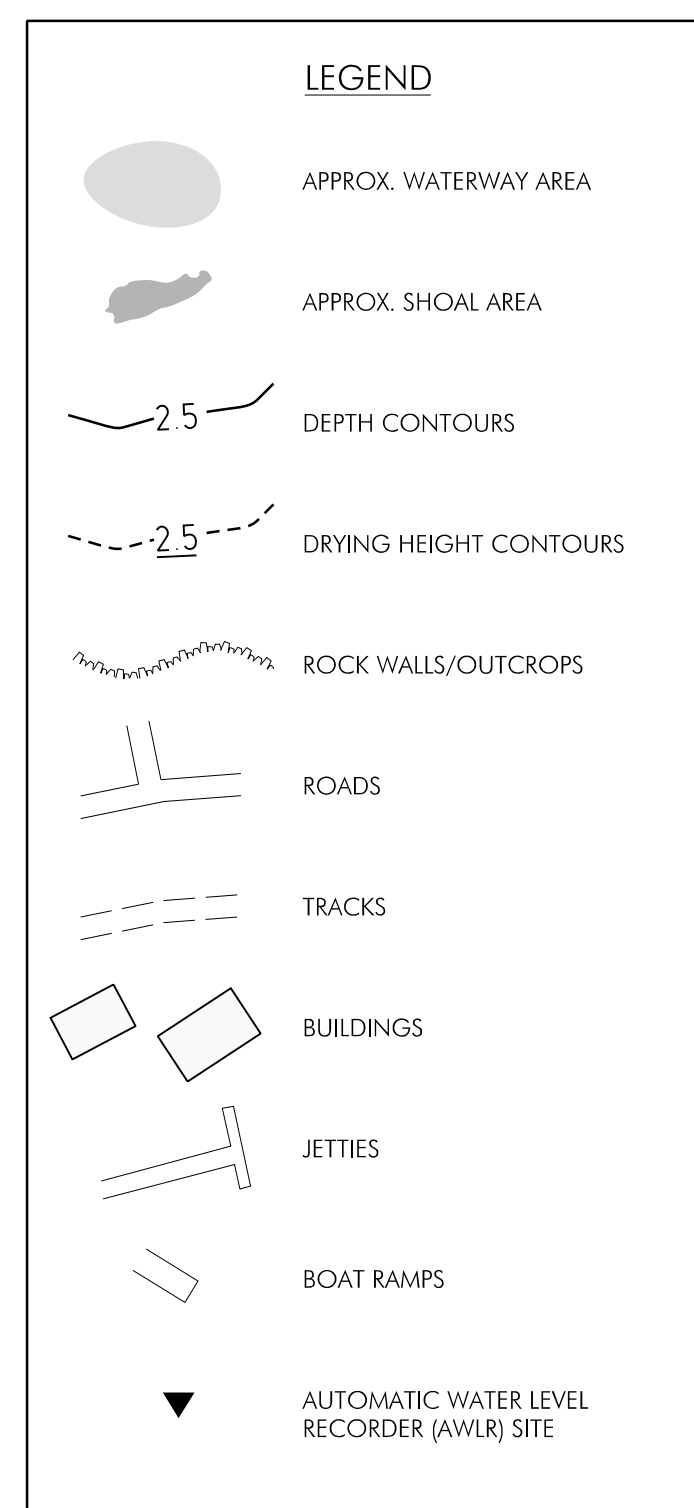
FORESHORE TOPOGRAPHY - ENTRANCE FORESHORE AND BEACH AREAS BY S. HOLTZNAGEL USING RTK GPS WITH PM15097 AS THE BASE STATION. ADDITIONAL LAKE FORESHORE BY S. MURRAY AND J. GILMOUR USING RTK GPS USING PM15097 AS THE BASE STATION.

NAVIGATION AIDS - THE LOCATION AND TYPE OF ALL NAVIGATION AIDS SHOWN HAVE BEEN KINDLY SUPPLIED BY THE NSW MARITIME AUTHORITY IN MAY 2008. THIS PLAN IS NOT INTENDED FOR NAVIGATION PURPOSES.

PHOTOGRAMMETRIC COMPONENT - WATERWAY AND SHOAL AREAS, ROCK WALLS, ROADS, TRACKS, BUILDINGS, JETTIES, ETC HAVE ALL BEEN LOCATED BY PHOTOGRAMMETRY UNDERTAKEN BY R. CLOUT.

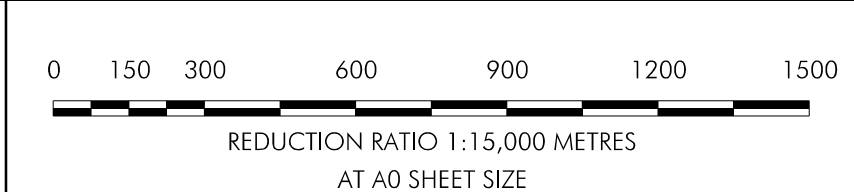
LOCALITY AND GEOGRAPHICAL FEATURE NAMES - ARE ALL FROM THE RELEVANT 1:25,000 SCALE TOPOGRAPHIC MAPS AS PRODUCED BY LAND AND PROPERTY MANAGEMENT AUTHORITY.

CONTOURS - HAVE BEEN SMOOTHED FOR THE PURPOSE OF CLARITY OF PRESENTATION ON THIS PLAN. IN SOME AREAS THE LOCATION OF THE SMOOTHED CONTOURS MAY NOT ALWAYS AGREE WITH THE ADJACENT DATA POINTS. THE ACTUAL DATA POINTS SHOULD ALWAYS BE USED FOR ANY SUBSEQUENT DATA ANALYSIS.



DATUM: AUSTRALIAN HEIGHT DATUM

CAUTION: THIS PLAN HAS BEEN PRODUCED AT THE SCALE(S) SHOWN BELOW FOR THE PURPOSE OF ESTUARY MANAGEMENT AND SHOULD NOT BE USED FOR ANY OTHER PURPOSE.



COORDINATES	M.G.A. ZONE 56
CONTOUR INTERVAL	N/A
SURVEYOR	S. HOLTZNAGEL
SURVEY DATES	DECEMBER 2007 TO APRIL 2008
PROJECT CONTROLLER	M. FITZHENRY
CADD OPERATOR	J. DUMBRICH
PLAN ENGINEER	S. SAUNDERS
JOB NUMBER	2009/1

Department of Environment, Climate Change and Water NSW

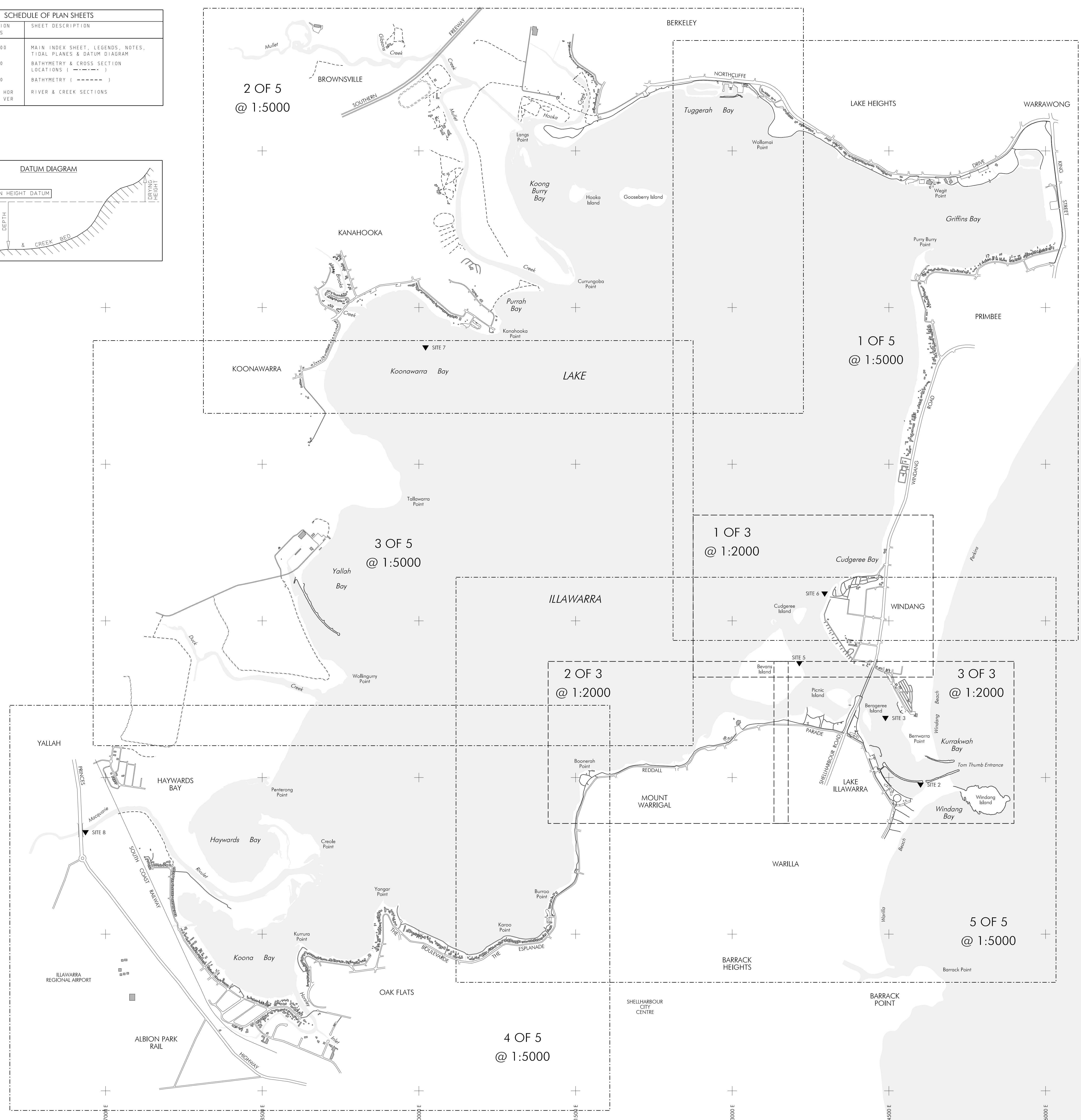
ESTUARY MANAGEMENT PROGRAM

SURVEYOR:	S. HOLTZNAGEL	21/12/2009
PROJECT CONTROLLER:	M. FITZHENRY	21/12/2009
PLAN EXAMINER:	S. SAUNDERS	21/12/2009

LAKE ILLAWARRA HYDROGRAPHIC SURVEY - 2008

INDEX SHEET

SHEET No 1/1
1:15,000 SERIES
No IN SET
1/15
PLAN ROOM CAT No
56207



B 56207

B 56207

NO	DETAILS OF AMENDMENTS	APPROVED	DATE

Plan prepared by
NSW PUBLIC WORKS
SURVEYING & SPATIAL INFORMATION SERVICES
LEVEL 14 MCKELL BUILDING
2-24 RANKIN PLACE SYDNEY
TEL: (02) 9372 7907 FAX: (02) 9372 7922
A division of the Department of Services, Technology & Administration