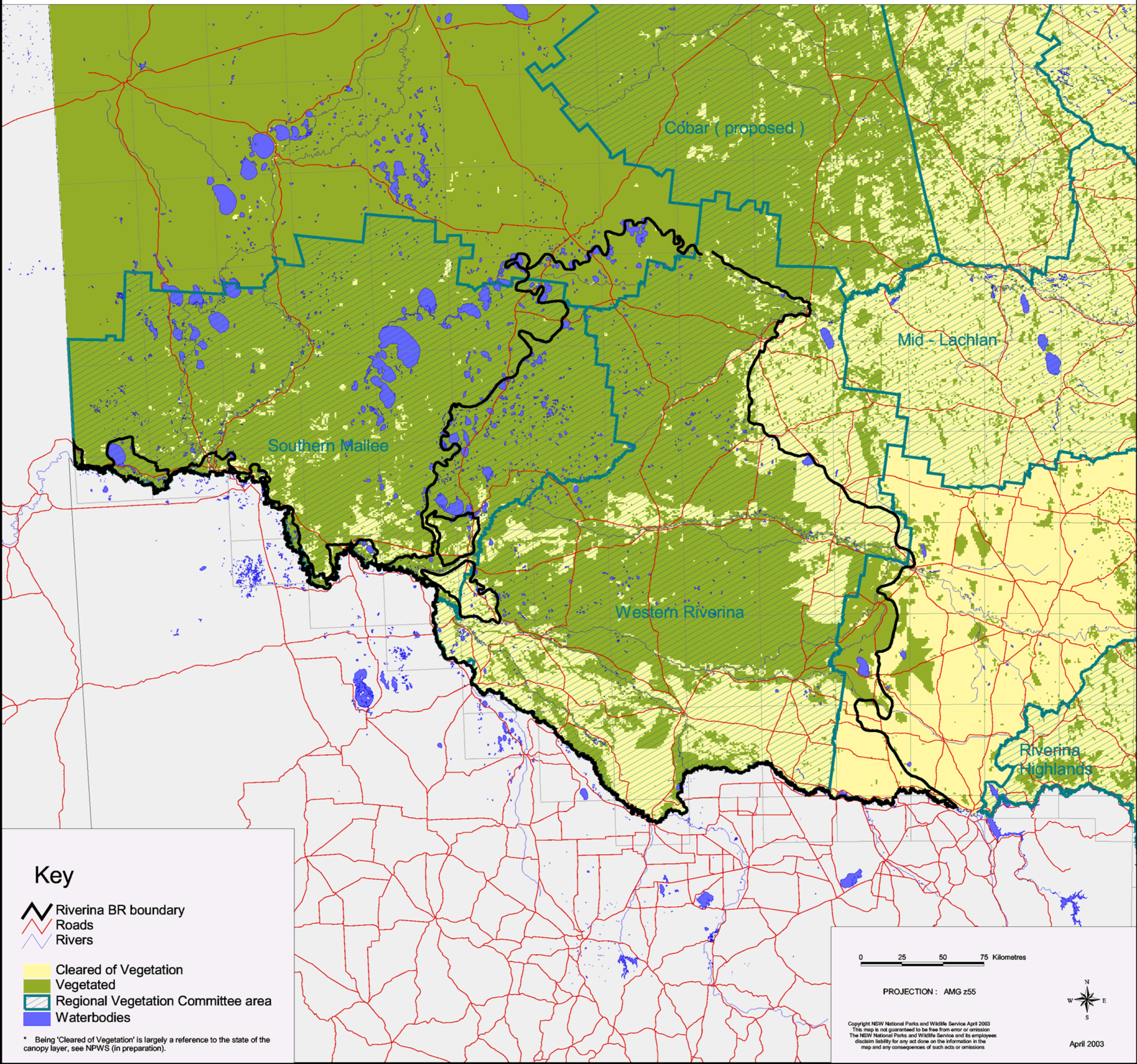





# Riverina Biogeographic Region (IBRA) - Vegetation



## Key

-  Riverina BR boundary
-  Roads
-  Rivers

-  Cleared of Vegetation
-  Vegetated
-  Regional Vegetation Committee area
-  Waterbodies

\* Being 'Cleared of Vegetation' is largely a reference to the state of the canopy layer, see NPWS (in preparation).

0 25 50 75 Kilometres

PROJECTION : AMG z55

Copyright NSW National Parks and Wildlife Service April 2003  
 This map is not guaranteed to be free from error or omission  
 The NSW National Parks and Wildlife Service and its employees  
 disclaim liability for any act done on the information in the  
 map and any consequences of such acts or omissions



April 2003