

# MU 19      CAPERTEE BOX – NARROW-LEAVED IRONBARK – CALLITRIS GRASSY WOODLAND

## ❑ CORRESPONDING CLASSIFICATIONS

Regional: No matching type in Tindall *et al.* (2004)

State: Western Slopes Grassy Woodlands

Number of Sites: 5

Average number of identified native species per plot: 36.4

## ❑ DESCRIPTION

This grassy box – ironbark woodland is extensively distributed across the basal Permian sediments of the Capertee Valley floor. The understorey is characterised by wire grass (*Aristida*) and windmill grass (*Chloris truncata*) with tussocks of dry country sedges and mat-rush. Shrubs are quite infrequent, and where present are usually wattles, *Bursaria* or immature cypress pine. The canopy shares a number of box species (*E.moluccana/albens*) in combination with *E. crebra*.

The map unit favours the friable loam soils that form on the basal sandstone and conglomerate units of the Sydney Basin, although some clay influence can be evident in many places. The bulk of the distribution is between 280 and 550 metres above sea level, although the unit will extend up to 700 metres where the favourable conditions are found higher in the north-western Capertee and the southern Wolgan. The rainfall values are around 600 to 700 millimetres *per annum*, rising to about 780 millimetres *per annum* in the Wolgan.

No matching unit can be identified within the catchment from the work of Tindall *et al.* (2004). Similar communities are likely to be found in catchments to the north and west of the Hawkesbury – Nepean system. The map unit falls within the Western Slopes Grassy Woodlands of Keith (2004) and in common with similar communities elsewhere, is poorly reserved and heavily cleared and fragmented by past agricultural land uses. Most remnants of this community exhibit evidence of high levels of disturbance. The community falls within the definition of the *White Box – Yellow Box – Blakely's Red Gum Woodland* Endangered Ecological Community listed under the NSW TSC Act 1995. It also forms a component of the *Grassy White Box Woodlands* Endangered Ecological Community listed under the Commonwealth EPBC Act 1999.



## ❑ STRUCTURAL SUMMARY

Stratum	Count	AvLowHt	AvHt	maxHt	AvCover	SDcover	minCover	maxCover
T	7	3.8	18.14	20	25.7	11.70	10	45
M1	3	0.6	2.33	4	12.3	11.02	5	25
L1	7		0.46	0.7	55.7	15.39	35	80

## ❑ FLORISTIC SUMMARY

### Trees

*Eucalyptus albens*, *E. crebra*

### Low Trees and Shrubs

*Brachychiton populneus*, *Callitris endlicheri*, *C. glaucophylla*

## Ground Covers

*Aristida ramosa*, *A. vagans*, *Astroloma humifusum*, *Austrostipa scabra*, *Calotis lappulacea*, *Cheilanthes austrotenuifolia*, *C. sieberi*, *Chloris truncata*, *Chrysocephalum apiculatum*, *Cymbopogon refractus*, *Desmodium varians*, *Dichondra* spp., *Gahnia aspera*, *Lomandra filiformis*, *Microlaena stipoides*, *Oxalis perennans*, *Vittadinia dissecta*

## Vines & Climbers

*Glycine clandestina*

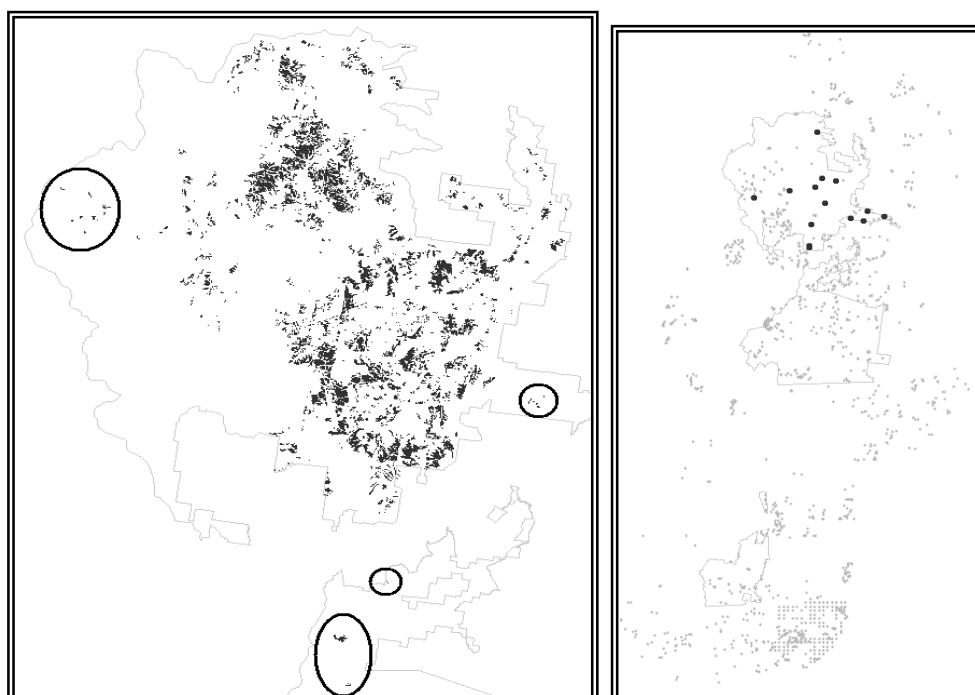
### □ KEY IDENTIFYING FEATURES

**Easily recognisable features to assist in identifying this map unit are:**

- Box and narrow-leaved ironbark dominated open forest or woodland with a diverse grassy understorey, usually on rolling to slightly hilly terrain.
- Coarser grasses often dominate in the drier conditions and under grazing, although in situations where the unit is protected it will support a range of soft palatable grasses.
- *Lomandra longifolia*, *Persoonia linearis* and *Poa* are essentially absent from this unit.

### □ EXAMPLE LOCATIONS

Glen Davis Road, crest and eastern slopes of hill east of Coco Creek crossing; Huntingdale Road, near the Capertee River Crossing and up Genowlan Road hill towards Huntingdale; Ridges between Capertee River and Warrangee Creek, just south of Bogee; Several small patches in the southern end of the Wolgan Valley.



### □ CONDITION ASSESSMENT

Disturbance Class	Area (ha)	Proportion Extant (%)
A Low	43.43	0.78
B Medium	642.63	11.58
C High	4864.61	87.64
<b>Total</b>	<b>5550.67</b>	<b>1000</b>

### □ THREATENED PLANT SPECIES

Definite: *Grevillea obtusiflora*, *Phebalium bifidum*

Possible: *Diuris tricolor* (syn. *D. sheaffiana*), *Goodenia macbarronii*

It is included within the scheduled description of *White Box – Yellow Box – Blakely's Red Gum Woodland* Endangered Ecological Community. It also forms a component of the *Grassy White Box Woodlands* Endangered Ecological Community listed under the Commonwealth EPBC Act 1999.

❑ **DIAGNOSTIC SPECIES**

Species Name	Group Score	Group Freq	Non Group Score	Non Group Freq	Fidelity Class
<i>Acacia montana</i>	2	7.15	0	0.01	positive
<i>Aristida ramosa</i>	3	50.01	2	3.55	positive
<i>Aristida vagans</i>	2	64.3	2	5.48	positive
<i>Astroloma humifusum</i>	2	50.01	1	10.79	positive
<i>Austrodanthonia racemosa</i> var. <i>racemosa</i>	2	35.71	2	9.5	positive
<i>Austrostipa drummondii</i>	3	7.15	0	0.01	positive
<i>Austrostipa scabra</i>	3	100.01	2	4.51	positive
<i>Brachychiton populneus</i>	2	71.44	1	6.28	positive
<i>Calotis cuneata</i>	1	7.15	0	0.01	positive
<i>Calotis lappulacea</i>	2	78.57	2	1.94	positive
<i>Cheilanthes distans</i>	2	35.71	2	3.87	positive
<i>Cheilanthes sieberi</i>	2	85.72	2	19.96	positive
<i>Chenopodium carinatum</i>	2	7.15	0	0.01	positive
<i>Chloris truncata</i>	2	35.71	3	0.49	positive
<i>Cymbopogon refractus</i>	2	78.57	2	4.51	positive
<i>Desmodium varians</i>	2	85.72	2	18.59	positive
<i>Dianella revoluta</i>	2	42.87	2	27.77	positive
<i>Dichondra repens</i>	2	57.15	2	23.98	positive
<i>Dichondra</i> species A	2	42.87	2	3.63	positive
<i>Digitaria diffusa</i>	2	35.71	2	0.41	positive
<i>Einadia nutans</i>	2	35.71	2	1.86	positive
<i>Enchylaena tomentosa</i>	2	14.3	0	0.01	positive
<i>Eragrostis elongata</i>	3	7.15	0	0.01	positive
<i>Eragrostis parviflora</i>	3	7.15	0	0.01	positive
<i>Eucalyptus albens</i>	4	42.87	3	2.26	positive
<i>Eucalyptus crebra</i>	3	50.01	3	4.83	positive
<i>Fimbristylis dichotoma</i>	1	7.15	0	0.01	positive
<i>Gahnia aspera</i>	2	92.87	2	3.79	positive
<i>Glycine clandestina</i>	2	57.15	2	20.2	positive
<i>Lomandra confertifolia</i>	2	42.87	2	11.11	positive
<i>Marsdenia pleiadenia</i>	2	7.15	0	0.01	positive
<i>Microlaena stipoides</i> var. <i>stipoides</i>	2	42.87	2	26.64	positive
<i>Notodanthonia longifolia</i>	2	50.01	2	6.76	positive
<i>Ophioglossum lusitanicum</i>	1	7.15	0	0.01	positive
<i>Oxalis perennans</i>	2	78.57	1	9.82	positive
<i>Panicum decompositum</i>	2	35.71	2	0.25	positive
<i>Phyllanthus virgatus</i>	2	14.3	0	0.01	positive
<i>Pultenaea cinerascens</i>	1	7.15	0	0.01	positive
<i>Senna artemisioides</i> subsp. <i>zygophylla</i>	3	14.3	0	0.01	positive
<i>Solanum prinophyllum</i>	2	42.87	2	10.07	positive
<i>Teucrium racemosum</i>	2	7.15	0	0.01	positive
<i>Teucrium</i> species A	1	7.15	0	0.01	positive
<i>Vittadinia cuneata</i>	2	42.87	2	5.56	positive
<i>Wahlenbergia stricta</i>	2	35.71	2	14.65	positive
<i>Lomandra filiformis</i>	2	57.15	2	35.96	constant
<i>Lomandra longifolia</i>	0	0.01	2	39.99	negative
<i>Poa sieberiana</i>	1	7.15	2	40.32	negative