

MU 20 CAPERTEE ROUGH-BARKED APPLE – REDGUM – YELLOW BOX GRASSY WOODLAND

□ CORRESPONDING CLASSIFICATIONS

Regional: No match with classifications in Tindall *et al.* (2004).

State: Western Slopes Grassy Woodland

Number of Sites: 10 Average number of identified native species per plot: 44.9

□ DESCRIPTION

Gentle rises, gullies and depressions in the dry Capertee Valley support a woodland to forest, usually with a diverse, grassy groundcover sometimes with a moderate density of. The canopy is dominated by rough-barked apple (*Angophora floribunda*), yellow box (*Eucalyptus melliodora*) and Blakely's red gum (*E. blakelyi*) sometimes with red box (*E. polyanthemos*). In places, small stands of black cypress pine (*Callitris endlicheri*) may dominate a mid-stratum layer. The shrubs are usually scattered, although in places may form low thickets, with blackthorn (*Bursaria spinosa*) dominating. The main grasses are speargrasses (*Austrostipa* and *Aristida* species) and the Andropogoneae grasses (barbwire grass *Cymbopogon* and kangaroo grass *Themeda*), with a wide array of herbs.



The distribution of the unit is mainly between 270m and 850m above sea level in the study area (although the majority of the distribution is below 600m in the Capertee and 750m in the Wolgan), where it receives an average 600 millimetres to 800 millimetres of precipitation *per annum*. It is found primarily on Devonian era metasediments and the finer-grained Permian strata of the lower Sydney Basin, although along streams it is undoubtedly associated with fine grained alluvial deposits.

This unit has no matching *community* identifiable in the catchment using Tindall *et al.* (2004). Like other grassy communities in the Capertee Valley it fits within the Western Slopes Grassy Woodland of Keith (2004). It is poorly reserved and has been heavily cleared and fragmented by past agricultural land uses. Most remnants of this community exhibit evidence of high levels of disturbance. The community falls within the definition of the *White Box – Yellow Box – Blakely's Red Gum Woodland* Endangered Ecological Community listed under the NSW TSC Act 1995. It may also form a component of the *Grassy White Box Woodlands* Endangered Ecological Community listed under the Commonwealth EPBC Act 1999.

□ STRUCTURAL SUMMARY

Stratum	Count	AvLowHt	AvHt	maxHt	AvCover	SDcover	minCover	MaxCover
T	9	6	22.89	30	30.22	10.02	15	45
M1	6	0.67	4.68	10	14.50	14.95	2	40
L1	9	0.15	0.47	1.2	40.78	27.69	7	90
L2	2		0.15	0.2	32.50	31.82	10	55

□ FLORISTIC SUMMARY

Trees

Angophora floribunda, *Eucalyptus blakelyi*, *E. cannonii*, *E. melliodora*, *E. polyanthemos*, *E. punctata*

Low Trees and Shrubs

Acrotriche rigida, *Bursaria spinosa*, *Indigofera australis*, *Solanum prinophyllum*

Ground Covers

Acaena ovina, *Aristida vagans*, *Asperula conferta*, *Astroloma humifusum*, *Austrodanthonia laevis*, *Austrodanthonia racemosa*, *Austrostipa scabra*, *Cheilanthes sieberi*, *Cymbopogon refractus*, *Desmodium varians*, *Dichondra* sp. A, *Echinopogon intermedius*, *Echinopogon ovatus*, *Eragrostis leptostachya*, *Gahnia aspera*, *Goodenia hederacea*, *Hydrocotyle laxiflora*, *Lagenifera stipitata*, *Plantago hispida*, *Poa sieberiana*, *Themeda australis*, *Veronica plebeia*

Vines & Climbers

Clematis glycinoides, *Glycine tabacina*

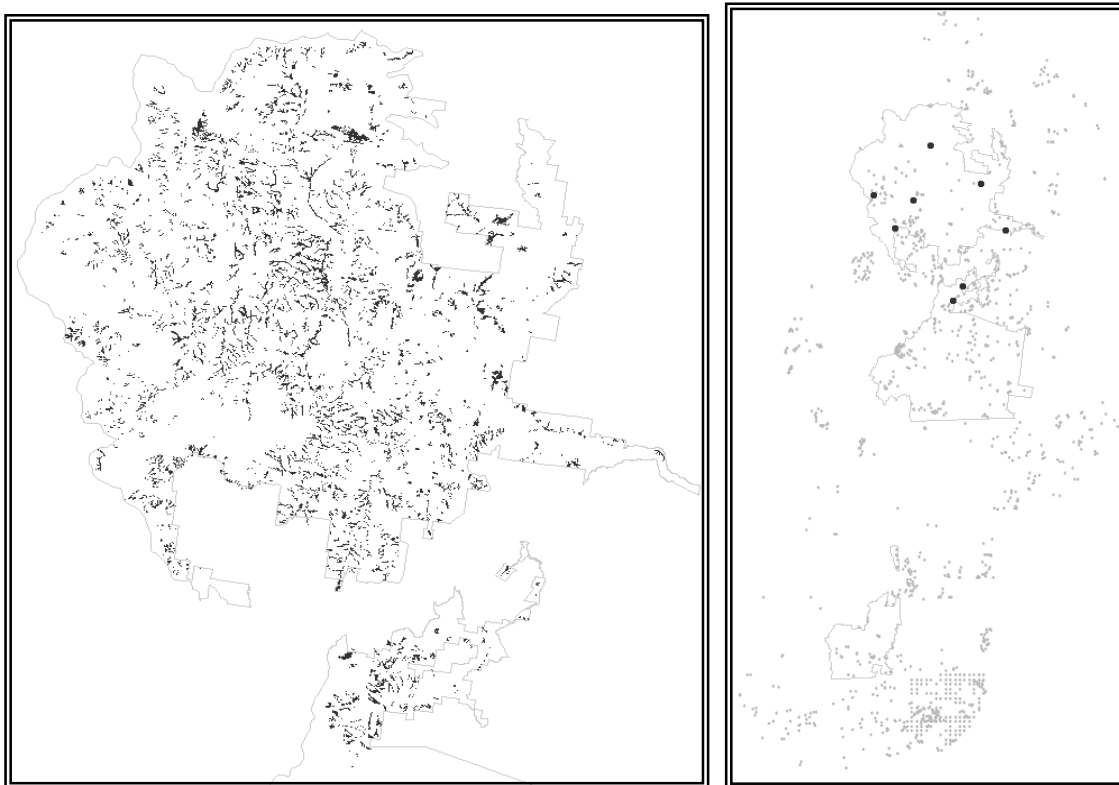
□ KEY IDENTIFYING FEATURES

Easily recognisable features to assist in identifying this map unit are:

- A typical combination of yellow box, rough-barked apple and red gum.
- Grassy understorey with isolated shrub thickets.
- Along low elevation drainage lines, flats and lower slopes.

□ EXAMPLE LOCATIONS

MacDonalds Hole; The floor of the Capertee Valley and of the Wolgan Valley; south side of Mount Airly; southwestern side of Mount Marsden.



□ CONDITION ASSESSMENT

Disturbance Class	Area (ha)	Proportion Extant (%)
A Low	371.56	6.81
B Medium	1345.73	24.68
C High	3735.09	68.50
Total	5452.38	100

□ THREATENED PLANT SPECIES

Definite: *Eucalyptus cannonii*

Possible: *Diuris tricolor* (syn. *D. sheaffiana*), *Goodenia macbarronii*, *Philothea ericifolia*, *Prostanthera cryptandroides*.

This community is likely to meet the requirements of the *White Box – Yellow Box – Blakely's Redgum Grassy Woodland* Endangered Ecological Community. It may also form a component of the *Grassy White Box Woodlands* Endangered Ecological Community listed under the Commonwealth EPBC Act 1999.

□ **DIAGNOSTIC SPECIES**

Species Name	Group Score	Group Freq (%)	Non Group Score	Non Group Freq (%)	Fidelity Class
<i>Acaena ovina</i>	2	50.00	2	5.76	positive
<i>Amyema pendulum</i>	2	37.50	1	3.92	positive
<i>Aristida vagans</i>	2	62.50	2	5.76	positive
<i>Asperula conferta</i>	2	50.00	2	7.84	positive
<i>Astroloma humifusum</i>	2	50.00	1	10.97	positive
<i>Austrodanthonia laevis</i>	3	37.50	2	1.84	positive
<i>Austrodanthonia racemosa</i>	3	75.00	2	9.36	positive
<i>Austrostipa rudis</i>	2	37.50	2	5.28	positive
<i>Austrostipa scabra</i>	3	50.00	2	5.28	positive
<i>Bursaria spinosa</i>	2	50.00	2	18.17	positive
<i>Calotis lappulacea</i>	2	37.50	2	2.56	positive
<i>Carex inversa</i>	2	37.50	2	4.24	positive
<i>Cheilanthes sieberi</i>	2	100.00	2	20.18	positive
<i>Cymbonotus lawsonianus</i>	2	62.50	1	5.92	positive
<i>Cynoglossum suaveolens</i>	2	75.00	2	4.96	positive
<i>Desmodium varians</i>	2	87.50	2	18.90	positive
<i>Dichelachne inaequiglumis</i>	3	37.50	2	7.12	positive
<i>Dichondra repens</i>	3	87.50	2	23.94	positive
<i>Echinopogon intermedius</i>	2	50.00	2	2.72	positive
<i>Echinopogon ovatus</i>	2	37.50	2	14.72	positive
<i>Eragrostis leptostachya</i>	2	50.00	2	1.44	positive
<i>Eucalyptus blakelyi</i>	3	50.00	3	2.64	positive
<i>Eucalyptus melliodora</i>	3	37.50	3	3.68	positive
<i>Eucalyptus polyanthemos</i>	4	37.50	3	5.20	positive
<i>Gahnia aspera</i>	2	50.00	2	4.48	positive
<i>Glycine tabacina</i>	2	62.50	1	8.32	positive
<i>Goodenia hederacea</i>	2	37.50	2	18.09	positive
<i>Goodenia rotundifolia</i>	2	12.50	0	0.00	positive
<i>Hakea macrorrhyncha</i>	2	12.50	0	0.00	positive
<i>Hydrocotyle laxiflora</i>	2	100.00	2	23.78	positive
<i>Hypericum japonicum</i>	2	50.00	2	6.32	positive
<i>Lagenifera stipitata</i>	2	62.50	2	9.76	positive
<i>Mentha saturoioides</i>	2	50.00	2	1.20	positive
<i>Microlaena stipoides</i>	4	87.50	2	26.42	positive
<i>Oxalis perennans</i>	2	75.00	2	10.17	positive
<i>Plantago hispida</i>	3	50.00	2	7.52	positive
<i>Themeda australis</i>	2	37.50	2	9.20	positive
<i>Veronica calycina</i>	2	50.00	2	10.97	positive
<i>Veronica plebeia</i>	3	50.00	2	15.93	positive
<i>Vittadinia cuneata</i>	2	37.50	2	5.76	positive
<i>Wahlenbergia stricta</i>	2	75.00	2	14.49	positive
<i>Lomandra filiformis</i>	2	75.00	2	35.95	constant
<i>Lomandra longifolia</i>	1	25.00	2	39.63	negative
<i>Poa sieberiana</i>	2	25.00	2	40.03	negative