

# MU 36 TABLELAND APPLE BOX – *BURSARIA* GRASSY OPEN FOREST

## □ CORRESPONDING CLASSIFICATIONS

Regional: No matching type is given in Tindall *et al.* (2004)

State: Southern Tableland Dry Sclerophyll Forests

Number of Sites: 3

Average number of identified native species per plot: 27.0

## □ DESCRIPTION

Gentle slopes and partly sheltered gullies in the highest elevations of the south-western Cox's area introduce another grassy dry sclerophyll forest and woodland. The forest is typified by a dominance of apple box (*E. bridgesiana*) and broad-leaved peppermint (*E. dives*). It is a grassy open forest with frequent, albeit spindly shrubs such as wattles and *Bursaria*. The grassy groundcover is quite open, and moderately diverse although still dominated by grasses common on the tablelands. To that extent it is closely related to Map Units 33 and 34 in more exposed sites and Map Unit 35, which emerges in deeper more sheltered locations. The unit typically favours metamorphic and basal Permian strata. The elevation range for the map unit is between 800 metres and 1100 metres altitude. Precipitation is of the order of 700 millimetres to 950 millimetres *per annum*.

This map unit is not well sampled, with current analysis indicating that the community is more extensive to the west of the catchment boundary. Consequently no matching community is identified in the study of Tindall *et al.* (2004). It bears some resemblance to the Tableland Hills Grassy Woodland in which case it falls within the Southern Tableland Dry Sclerophyll Forests of Keith (2004)



## □ STRUCTURAL SUMMARY

Stratum	Count	AvLowHt	AvHt	maxHt	AvCover	SDcover	minCover	maxCover
T	1	7	20	20	30		30	30
M1	1	1	5	5	5		5	5
L1	1		0.30	0.3	40		40	40

Some sites involved in the analysis lack structural data.

## □ FLORISTIC SUMMARY

### Trees

*Eucalyptus bridgesiana*, *E. dives*, *E. mannifera*, *E. melliodora*

### Low Trees and Shrubs

*Acacia dealbata*, *Bursaria spinosa*, *Hibbertia obtusifolia*, *Lissanthe strigosa*

### Ground Covers

*Austrodanthonia racemosa*, *Austrostipa rudis*, *Cheilanthes sieberi*, *Dianella revoluta*, *Dichelachne micrantha*, *Hypericum gramineum*, *Joycea pallida*, *Lomandra filiformis*, *Opercularia hispida*, *Plantago hispida*, *Poa sieberiana*, *Poranthera microphylla*

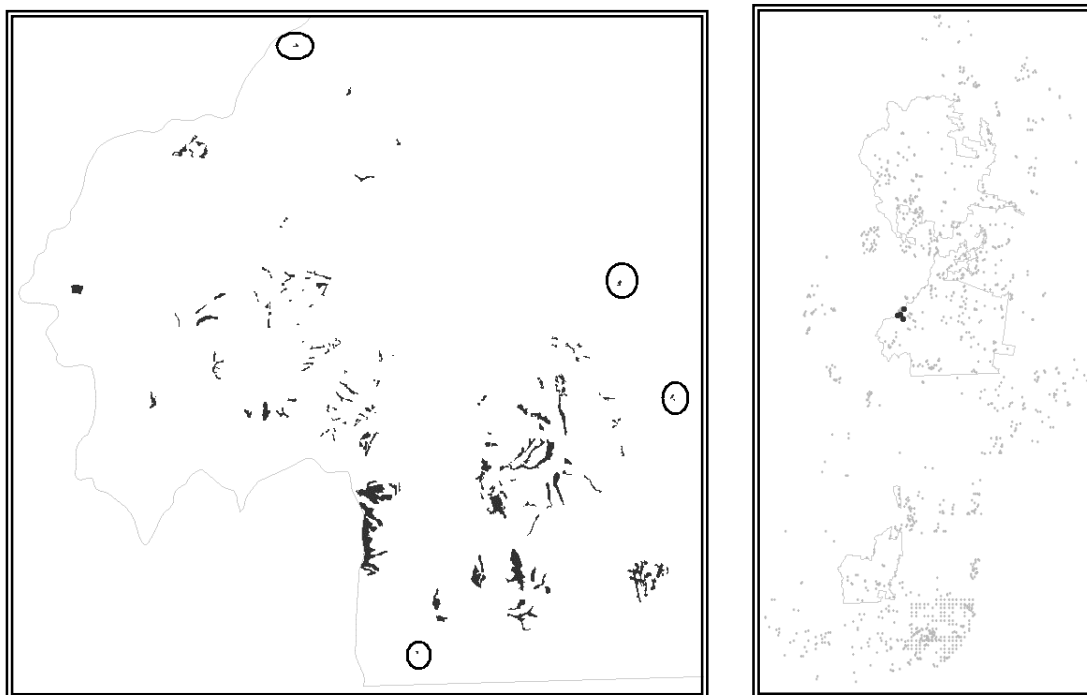
□ **KEY IDENTIFYING FEATURES**

**Easily recognisable features to assist in identifying this map unit are:**

- Open forest or woodland dominated by apple box (*E. bridgesiana*), with occurrences of other species, mainly broad-leaved peppermint (*E. dives*) and brittle gum (*E. mannifera*).
- Sparse midstratum with wattles dominating and *Bursaria* common.
- Understorey typically open, moderately diverse, and dominated by grasses.

□ **EXAMPLE LOCATIONS**

Throughout the upper Cox's Valley, near Lithgow, Mount Walker and Rydal in particular.



□ **CONDITION ASSESSMENT**

Disturbance Class	Area (ha)	Proportion Extant (%)
A Low	73.74	19.18
B Medium	173.59	45.16
C High	137.04	35.65
<b>Total</b>	<b>384.37</b>	<b>100</b>

□ **THREATENED PLANT SPECIES**

Possible: *Derwentia blakelyi*, *Eucalyptus pulverulenta*, *Thesium australe*

□ **DIAGNOSTIC SPECIES**

Species Name	Group Score	Group Freq (%)	Non Group Score	Non Group Freq (%)	Fidelity Class
<i>Acacia falciformis</i>	2	47.62	2	14.10	positive
<i>Acaena novae-zelandiae</i>	2	52.38	2	12.70	positive
<i>Austrodanthonia caespitosa</i>	2	52.38	2	1.07	positive
<i>Austrostipa rudis</i>	2	76.19	2	4.34	positive
<i>Austrostipa scabra</i>	2	38.10	2	4.51	positive
<i>Brachyloma daphnoides</i>	2	38.10	1	14.26	positive
<i>Bursaria spinosa</i>	3	71.43	2	17.30	positive
<i>Cheilanthes sieberi</i>	2	66.67	2	14.26	positive
<i>Desmodium varians</i>	2	52.38	2	18.36	positive
<i>Dianella revoluta</i>	2	66.67	2	26.80	positive
<i>Dichondra repens</i>	2	38.10	2	23.85	positive

Species Name	Group Score	Group Freq (%)	Non Group Score	Non Group Freq (%)	Fidelity Class
<i>Echinopogon ovatus</i>	2	71.43	2	13.85	positive
<i>Eucalyptus bridgesiana</i>	3	95.24	3	2.71	positive
<i>Geranium solanderi</i>	2	57.14	2	13.11	positive
<i>Glyceria latispicea</i>	1	4.76	0	0	positive
<i>Glycine clandestina</i>	2	42.86	2	19.59	positive
<i>Hibbertia obtusifolia</i>	2	76.19	2	26.39	positive
<i>Hydrocotyle laxiflora</i>	2	85.71	2	22.62	positive
<i>Lepidosperma laterale</i>	2	47.62	1	12.46	positive
<i>Microlaena stipoides</i> var. <i>stipoides</i>	2	71.43	2	26.15	positive
<i>Poranthera microphylla</i>	2	61.90	1	22.79	positive
<i>Senecio hispidulus</i>	2	47.62	1	3.28	positive
<i>Stellaria pungens</i>	2	71.43	2	22.21	positive
<i>Themeda australis</i>	2	52.38	2	8.53	positive
<i>Veronica calycina</i>	2	47.62	2	10.33	positive
<i>Wahlenbergia communis</i>	2	42.86	1	5.33	positive
<i>Lomandra filiformis</i>	2	76.19	2	35	constant
<i>Lomandra longifolia</i>	2	71.43	2	39.18	constant
<i>Poa sieberiana</i>	2	85.71	2	39.18	constant