

MU 38 CAPERTEE GREY GUM – NARROW-LEAVED STRINGYBARK – SCRIBBLY GUM – CALLITRIS – IRONBARK SHRUBBY FOREST

□ CORRESPONDING CLASSIFICATIONS

Regional: No matching type in *Tindall et al. (2004)*

State: Western Slopes Dry Sclerophyll Forests

Number of Sites: 21

Average number of identified native species per plot: 40.7

□ DESCRIPTION

A shrubby, dry forest to woodland community found on moderate to steep slopes and ridge crests throughout the western Capertee Valley, and with localised occurrences in the eastern parts. The canopy is usually of open forest grade, although denser patches may occur where regeneration of eucalypts and thickets of native pine may infrequently occur. Tree species are highly variable and exhibit localised patterns. The most consistent member of the community is grey gum (*E. punctata*) though it may not dominate all sites. Combinations of stringybarks (*E. cannonii*, *E. sparsifolia*, *E. tenella*) were encountered as were local patches of ironbark (*E. fibrosa*) and tablelands scribbly gum (*E. rossii*). The understorey is usually shrubby, dominated by wattles, epacrids and with scattered tussocks of coarse grasses such as *Joycea pallida*. *Persoonia linearis* is a regular member of the community.



Found mainly on stony soils, derived from finer grades of talus falling from sandstone escarpments above, or on the metamorphic basement rocks. Loose rock at the surface is a common feature of the community. It ranges from 400 to about 750 metres altitude, although the bulk of occurrence is between 500 and 650 metres. Annual rainfall is in the order of 600 to 700 millimetres *per annum*.

As with many of the Capertee mapping units this one shows relationships to the Western Slopes Dry Sclerophyll Forests of Keith (2004). No similar unit has been described in *Tindall et al. (2004)*. The community is restricted to this part of the catchment although similar forests are likely to be found in the adjoining catchments to the north and west. Within the catchment the community is found within the Gardens of Stone National Park (EcoGIS 2002).

□ STRUCTURAL SUMMARY

Stratum	Count	AvLowHt	AvHt	maxHt	AvCover	SDcover	minCover	maxCover
E	1	2.0	8	8	3.0		3	3
T	20	5.5	18.40	25	29.0	14.12	7	70
M1	17	0.6	3.16	7	19.2	19.97	1	70
M2	4	0.3	1.13	1.5	28.8	13.15	15	40
L1	20	0.2	0.43	1	23.0	15.11	5	50
L2	1		0.30	0.3	10.0		10	10

□ FLORISTIC SUMMARY

Trees

Eucalyptus cannonii, *E. fibrosa*, *E. punctata*, *E. rossii*, *E. sparsifolia*

Low Trees and Shrubs

Acacia decora, *Acrotriche rigida*, *Brachyloma daphnoides*, *Bursaria spinosa*, *Callitris endlicheri*, *Leucopogon muticus*, *Lissanthe strigosa*, *Melichrus urceolatus*, *Persoonia linearis*, *Pultenaea scabra*.

Ground Covers

Astroloma humifusum, *Cheilanthes austrotenuifolia*, *Dianella revoluta*, *Dichelachne micrantha*, *Goodenia hederacea*, *Hibbertia obtusifolia*, *Joycea pallida*, *Lepidosperma gunnii*, *Lomandra confertifolia*, *L. filiformis*, *L. glauca*, *Microlaena stipoides*, *Pomax umbellata*

Vines & Climbers

Glycine clandestina, *Hardenbergia violacea*

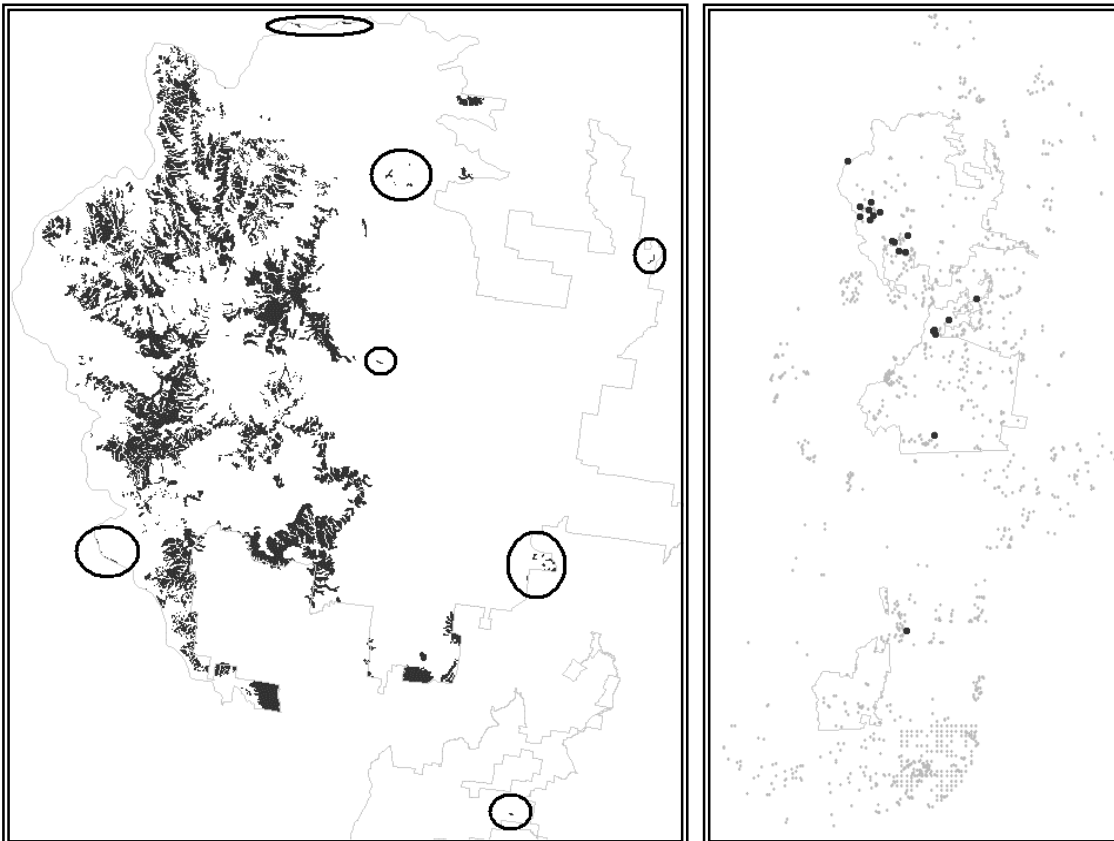
□ KEY IDENTIFYING FEATURES

Easily recognisable features to assist in identifying this map unit are:

- Significant presence of grey gum (*E. punctata*) red ironbark (*E. fibrosa*) and often tablelands scribbly gum (*E. rossii*) and a stringybark species (*E. sparsifolia*, *E. tenella* and *E. cannonii*). Patches of *Callitris* pine present, but rarely dominating the canopy.
- Open, diverse shrub layer dominated by epacrids and legumes.
- Relatively little *Poa sieberana* and *Lomandra longifolia*, although *Joycea pallida* may be locally abundant.
- Cycads (*Macrozamia secunda* particularly) are relatively common, but scattered and usually localised.

□ EXAMPLE LOCATIONS

Primarily found on the lower ends of the talus slopes in the western Capertee Valley, and on the adjacent ridges and slopes of metamorphics, such as the south-eastern flanks of Genowlan Mountain, east of Excelsior Quarry, and between 'Port Macquarie' and 'The Pines'.



□ **CONDITION ASSESSMENT**

Disturbance Class	Area (ha)	Proportion Extant (%)
A Low	3860.68	42.36
B Medium	2847.28	31.24
C High	2406.47	26.40
Total	9114.43	100

□ **THREATENED PLANT SPECIES**

Definite: *Eucalyptus cannonii*, *Grevillea obtusiflora*, *Persoonia marginata*, *Phebalium bifidum*, *Prostanthera cryptandroides*, *Prostanthera stricta*

Possible: *Apatophyllum constablei*, *Astrotricha crassifolia*, *Diuris tricolor* (syn. *D. sheaffiana*), *Persoonia hirsuta*, *Philothea ericifolia*

□ **DIAGNOSTIC SPECIES**

Species Name	Group Score	Group Freq (%)	Non Group Score	Non Group Freq (%)	Fidelity Class
<i>Aristida caput-medusae</i>	1	5.00	0	0.00	positive
<i>Aristida vagans</i>	2	40.00	2	5.57	positive
<i>Astroloma humifusum</i>	2	75.00	1	10.19	positive
<i>Austrodanthonia racemosa</i> var. <i>racemosa</i>	2	45.00	2	9.21	positive
<i>Bursaria spinosa</i>	2	55.00	2	17.78	positive
<i>Cassinia cunninghamii</i>	2	35.00	1	2.10	positive
<i>Cheilanthes sieberi</i>	2	80.00	2	19.73	positive
<i>Desmodium varians</i>	2	50.00	2	18.84	positive
<i>Dianella revoluta</i>	2	70.00	2	27.23	positive
<i>Dichelachne inaequiglumis</i>	2	60.00	2	6.46	positive
<i>Dichelachne micrantha</i>	2	45.00	2	7.84	positive
<i>Echinopogon intermedius</i>	2	35.00	2	2.50	positive
<i>Eucalyptus cannonii</i>	3	50.00	2	2.82	positive
<i>Eucalyptus polyanthemus</i>	3	50.00	3	4.68	positive
<i>Eucalyptus punctata</i>	3	80.00	3	20.44	positive
<i>Eucalyptus rossii</i>	3	45.00	3	12.77	positive
<i>Eucalyptus sparsifolia</i>	4	70.00	3	10.27	positive
<i>Glycine clandestina</i>	2	75.00	2	19.73	positive
<i>Gonocarpus tetragynus</i>	2	85.00	2	26.92	positive
<i>Goodenia hederacea</i>	2	75.00	2	17.29	positive
<i>Hardenbergia violacea</i>	2	65.00	1	19.73	positive
<i>Helichrysum scorpioides</i>	2	45.00	2	11.48	positive
<i>Hibbertia obtusifolia</i>	2	60.00	2	26.84	positive
<i>Hypericum japonicum</i>	2	60.00	2	5.74	positive
<i>Joycea pallida</i>	3	85.00	2	13.18	positive
<i>Lagenifera stipitata</i>	2	50.00	2	9.45	positive
<i>Lepidosperma gunnii</i>	2	65.00	1	7.84	positive
<i>Lissanthe strigosa</i>	2	45.00	2	13.42	positive
<i>Lomandra multiflora</i> subsp. <i>multiflora</i>	2	50.00	1	19.23	positive
<i>Microlaena stipoides</i> var. <i>stipoides</i>	3	75.00	2	26.02	positive
<i>Opercularia diphylla</i>	2	60.00	2	6.22	positive
<i>Oxalis perennans</i>	2	60.00	2	9.78	positive
<i>Persoonia linearis</i>	2	55.00	2	34.36	positive
<i>Podolobium ilicifolium</i>	2	45.00	2	17.70	positive
<i>Pomax umbellata</i>	2	35.00	2	20.78	positive
<i>Pterostylis grandiflora</i>	2	10.00	0	0.00	positive
<i>Stylidium graminifolium</i>	2	35.00	1	7.35	positive
<i>Veronica plebeia</i>	2	40.00	2	15.76	positive
<i>Vittadinia cuneata</i>	2	45.00	2	5.33	positive
<i>Wahlenbergia stricta</i>	2	40.00	2	14.47	positive

Species Name	Group Score	Group Freq (%)	Non Group Score	Non Group Freq (%)	Fidelity Class
<i>Lomandra filiformis</i>	2	80.00	2	35.49	constant
<i>Poa sieberiana</i>	2	55.00	2	39.68	constant
<i>Lomandra longifolia</i>	2	25.00	2	39.77	negative