

MU 43 PAGODA ROCK SPARSE SHRUBLAND

□ CORRESPONDING CLASSIFICATIONS

Regional: No match with Tindall *et al.* (2004)

State: Sydney Montane Heath

Number of Sites: 4

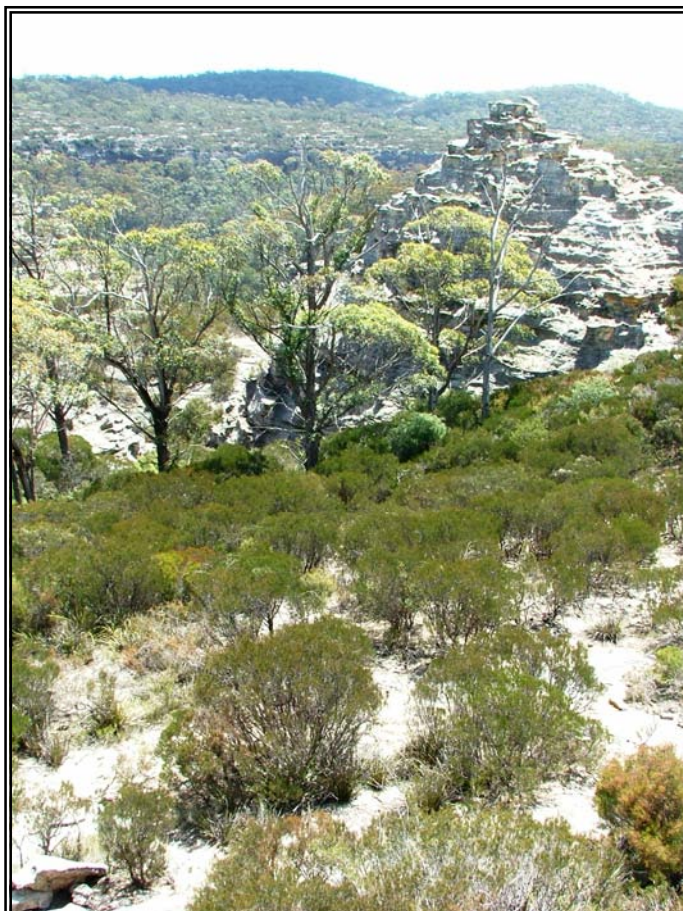
Average number of identified native species per plot: 25.5

□ DESCRIPTION

Massive residual sandstone rock outcrops known as 'pagodas' are a spectacular sight on the edges of the sandstone plateaus and mesas. This map unit is one of several heath communities that grow in and around these rock formations. The consistent heath species found in this unit are *Calytrix tetragona*, *Leptospermum parvifolium* and *L.arachnoides* and *Leucopogon muticus*. Exposed rock makes up a large proportion of each of the sites and as result total vegetation cover is variable. Some sites include scattered *Callitris* pines or low stunted eucalypts.

The unit occurs exclusively on Triassic era Narrabeen sediments. The altitude range for the community is between 650 and 1150 metres above sea level, although the majority of the unit is distributed at about 900 to 950 metres above sea level, and there is between 680 millimetres and 1080 millimetres of precipitation *per annum*.

Data analysis suggests that this heath is a different complex to those found elsewhere in the Blue Mountains. It is most prominent on the drier western escarpment. While it may loosely be considered a component of Blue Mountains Heath of Tindall *et al.* (2004) and Sydney Montane Heaths of Keith (2004) it is perhaps better considered as a unique feature of pagoda systems in this region. The community is found extensively throughout Gardens of Stone and western Wollemi National Park.



□ STRUCTURAL SUMMARY

Stratum	Count	AvLowHt	AvHt	maxHt	AvCover	SDcover	minCover	maxCover
E	1	12	13	13	4		4	4
T	3	7.57	9.33	20	34.33	28.75	8	65
M1	2	6.10	10	15	40	14.14	30	50
M2	1	3	5	5	10		10	10
L1	3	0.10	0.57	1	31.67	41.93	5	80

Note that not all sites have structural information available.

□ FLORISTIC SUMMARY

Emergents (mostly trees)

Callitris rhomboidea, *Callitris endlicheri*, *Eucalyptus blaxlandii*, *E. piperita*

Low Trees and Shrubs

Acacia obtusifolia, *Allocasuarina distyla*, *Allocasuarina nana*, *Banksia penicillata*, *Calytrix tetragona*, *Isopogon anethifolius*, *Leptospermum arachnoides*, *Leptospermum parvifolium*, *Leptospermum trinervium*, *Leucopogon muticus*, *Monotoca scoparia*, *Ozothamnus diosmifolius*, *Petrophile pulchella*, *Platysace lanceolata*

Ground Covers

Gonocarpus teucrioides, *Goodenia bellidifolia*, *Lepidosperma gunnii*, *Lepidosperma laterale*, *Lomandra confertifolia*, *Lomandra glauca*, *Platysace linearifolia*, *Stylidium graminifolium*, *Stylidium lineare*

Vines & Climbers

Cassytha pubescens, *Cassytha racemosa*

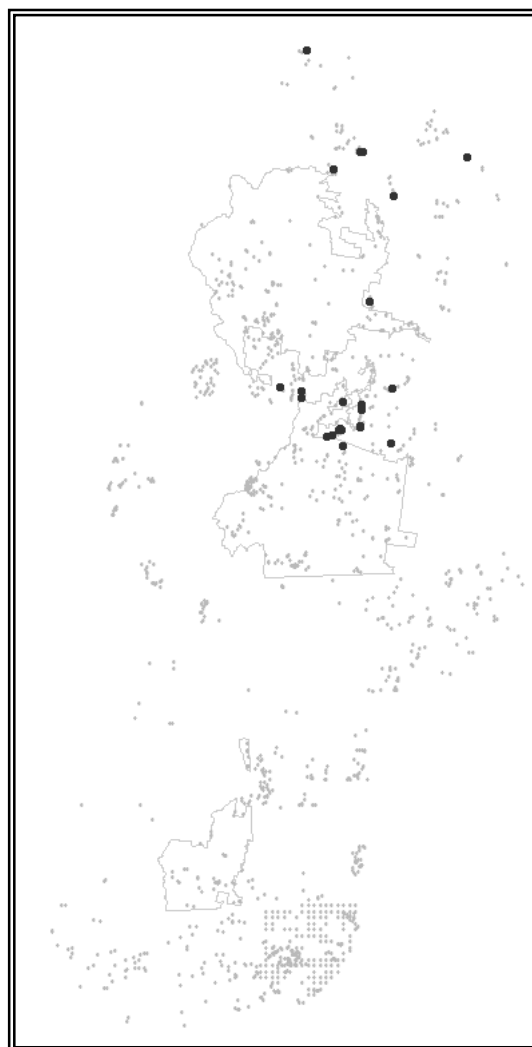
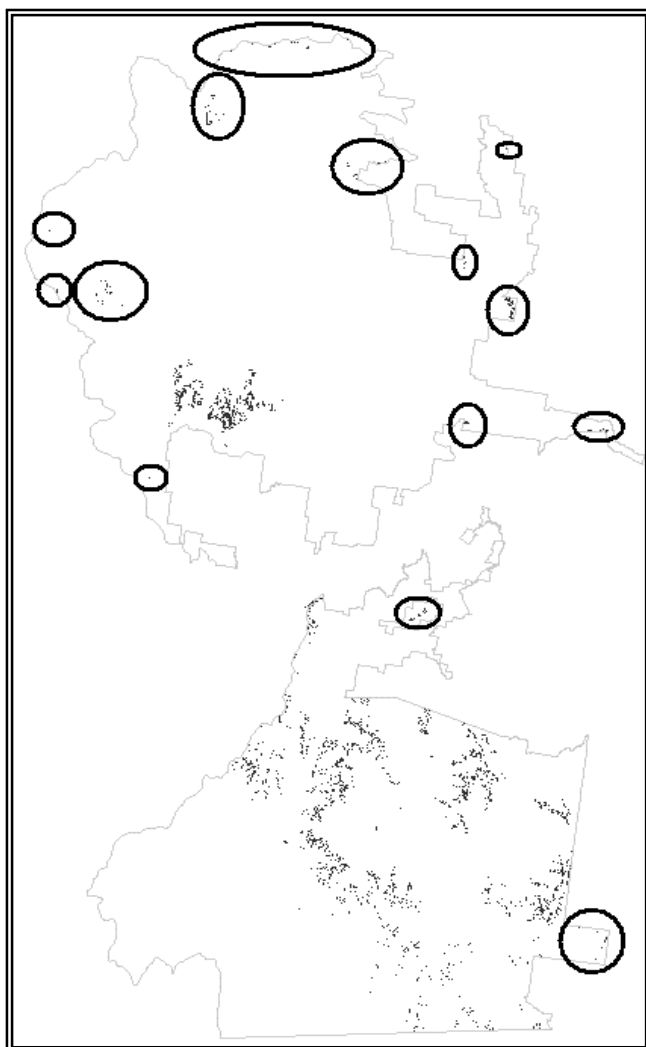
❑ KEY IDENTIFYING FEATURES

Easily recognisable features to assist in identifying this map unit are:

- Prominent outcrops of 'Pagoda Rock', interspersed with patches of vegetation that is usually of a heath form.

❑ EXAMPLE LOCATIONS

Newnes Plateau, particularly on the western side and around larger gorges; Ben Bullen State Forest; Mount Airly – Genowlan; Mount Marsden; Near Glen Alice and Glen Davis; Donkey Mountain.



❑ CONDITION ASSESSMENT

Disturbance Class	Area (ha)	Proportion Extant (%)
A Low	N/a	N/a
B Medium	N/a	N/a
C High	N/a	N/a
Total	N/a	N/a

❑ THREATENED PLANT SPECIES

Definite: *Prostanthera stricta*, *Boronia deanei*, *Philothea ericifolia*

Possible: *Acacia flocktoniae*, *Darwinia peduncularis*, *Euphrasia bowdeniae*, *Grevillea evansiana*, *Leonema sympetalum*, *Leucopogon fletcheri*, *Persoonia hindii*, *Persoonia hirsuta*, *Prostanthera cryptandroides*

□ **DIAGNOSTIC SPECIES**

Species Name	Group Score	Group Freq (%)	Non Group Score	Non Group Freq (%)	Fidelity Class
<i>Acacia obtusifolia</i>	2	45.83	2	12.08	positive
<i>Acacia trinervata</i>	1	4.16	0	0.00	positive
<i>Babingtonia densifolia</i>	2	41.67	2	1.29	positive
<i>Baeckea imbricata</i>	3	4.16	0	0.00	positive
<i>Calytrix tetragona</i>	3	95.83	2	1.21	positive
<i>Cryptandra propinqua</i>	1	12.50	0	0.00	positive
<i>Dillwynia juniperina</i>	2	25.00	0	0.00	positive
<i>Drosera auriculata</i>	2	8.33	0	0.00	positive
<i>Hovea purpurea</i>	1	4.16	0	0.00	positive
<i>Kunzea species D</i>	1	4.16	0	0.00	positive
<i>Lepidosperma viscidum</i>	2	62.50	2	2.19	positive
<i>Leptospermum arachnoides</i>	3	79.17	2	2.27	positive
<i>Leptospermum parvifolium</i>	3	91.67	2	0.97	positive
<i>Leucochrysum graminifolium</i>	1	25.00	0	0.00	positive
<i>Leucopogon microphyllus</i>	2	50.00	1	1.70	positive
<i>Leucopogon muticus</i>	2	95.83	2	7.54	positive
<i>Leucopogon neo-anglicus</i>	1	4.16	0	0.00	positive
<i>Lomandra confertifolia</i>	2	37.50	2	10.95	positive
<i>Muehlenbeckia rhyticarya</i>	1	4.16	0	0.00	positive
<i>Muellerina bidwillii</i>	1	4.16	0	0.00	positive
<i>Platysace lanceolata</i>	2	75.00	2	7.86	positive
<i>Prostanthera hindii</i>	2	4.16	0	0.00	positive
<i>Pseudanthus pimeleoides</i>	1	4.16	0	0.00	positive
<i>Lomandra filiformis</i>	1	4.16	2	36.82	negative
<i>Lomandra longifolia</i>	1	25.00	2	39.82	negative
<i>Persoonia linearis</i>	1	4.16	2	35.28	negative
<i>Poa sieberiana</i>	2	4.16	2	40.63	negative