



NSW National Parks
and Wildlife Service

National Parks & Reserves of the North Coast



Giinagay!

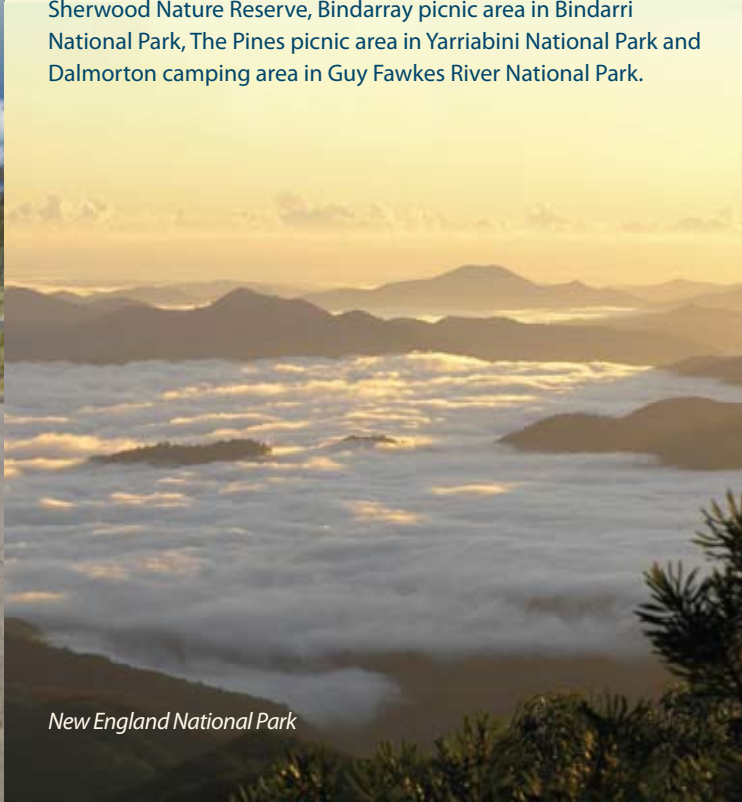
... Welcome

While in the North Coast Region you are mostly within the traditional homelands of the Gumbaynggirr, Bundjalung and Yaegl Aboriginal Peoples whose lands share borders with the Dunghutti, Bainbai and Anaiwan Nations.

Aboriginal people of the north coast have a strong connection and respect for culture and heritage throughout the region. Many national parks are named for significant features of the Aboriginal landscape or mythology relating to the area.

The National Parks and Wildlife Service recognises and respects the spiritual and cultural values of Country (land, water, plants and wildlife) and involves Aboriginal custodians in management to help care for Country and facilitate the practice of culture.

Local Aboriginal people may share their stories through cultural Discovery tours such as at 'Giidayn Miirral' (Muttonbird Island Nature Reserve). Also look for information displays at Iluka Bluff in Bundjalung National Park, Woolgoolga Creek picnic area in Sherwood Nature Reserve, Bindarray picnic area in Bindarri National Park, The Pines picnic area in Yarriabini National Park and Dalmorton camping area in Guy Fawkes River National Park.



New England National Park

Contact us

ENVIRONMENT LINE

Ph: 1300 361 967 or (02) 9995 5550
Email: info@environment.nsw.gov.au
Web: www.environment.nsw.gov.au



GRAFTON

Level 3, 49 Victoria Street
(PO Box 361), Grafton, 2460
Ph: (02) 6641 1500

COFFS HARBOUR

32 Marina Drive
(PO Box J200), Coffs Harbour, 2450
Ph: (02) 6652 0900

DORRIGO

Dorrigo Rainforest Centre
Dome Road, (PO Box 170), Dorrigo, 2453
Ph: (02) 6657 2309



▲ Canoeing at Moonee Beach Nature Reserve

Published by Department of Environment and Climate Change NSW
59-61 Goulburn Street, Sydney
Phone: 1300 361 967
TTY: (02) 9211 4723
Email: info@environment.nsw.gov.au
Website: www.environment.nsw.gov.au
© Department of Environment and Climate Change, 2008

DECC 2008/311
Printed using environmentally sustainable practices

Printed June 2008

Department of Environment & Climate Change NSW



Welcome to the North Coast Region

The North Coast Region covers the Great Escarpment from the Macleay River to the Clarence Valley, an area characterised by dramatic views, dense forests and spectacular waterfalls.

Almost 100 kilometres of precious natural coastline is also conserved, where you will find rocky headlands, pristine estuaries, rich wetlands, sunny heathland and littoral rainforest, as well as golden beaches.

There are more than 80 parks and reserves in the region, totalling over 380,000 hectares. They are home to a stunning diversity of plants and animals, including many threatened species.



▲ Diggers Beach in Coffs Coast Regional Park



▲ Dorrigo National Park

World Heritage rainforest

Rainforest once covered most of the ancient supercontinent Gondwana. In Australia today, rainforest is restricted to small areas along the Great Dividing Range and coastal plain, isolated in a sea of fire-prone eucalypts and cleared land. Our remaining rainforests contain primitive plants and animals that provide a fascinating link with the evolution of Australia.



The **Gondwana Rainforests of Australia** World Heritage Area comprises more than 50 individual reserves in north-eastern NSW and south-eastern Queensland, containing subtropical, warm temperate and Antarctic beech cool temperate rainforest.

Experience World Heritage rainforest at **Dorrigo Rainforest Centre**, just one hour's drive south-west of Coffs Harbour on the Waterfall Way. Tread **Skywalk** for a birds-eye view of the canopy, wander through the exhibition or walk with the birds through luxuriant subtropical rainforest to **Crystal Shower Falls** on Wonga Walk. You can also walk into World Heritage rainforest at Iluka Nature Reserve, New England National Park and Mt Hyland Nature Reserve.

Enjoying your parks

There are many ways to enjoy your parks in this region: pack a picnic lunch, take a scenic forest drive, enjoy a nature stroll or tackle a more challenging bushwalk. For a weekend away with the family go bush in the hinterland or camp by the beach and enjoy swimming, surfing and canoeing.

Scenic forest drives

Moonpar Forest Drive (65km circuit from Dorrigo). See giant tallowood trees, picnic at Platypus Flat by the Nymboida River and discover our rich timber heritage on a self-guided walk.

Yarriabini National Park (38km circuit from Macksville). Cook a barbecue and do the shady rainforest walk at The Pines picnic area, before driving to the lookout on Tower Road. Enjoy stunning views, palm-lined creeks and the chance to learn a little about the spiritual values of the area from Aboriginal cultural displays.

Dalmorton, on the Old Grafton-Glen Innes Road (70km from Grafton). Discover echoes of our past gold-mining and farming history in this remote river valley. Explore the old town site and the road tunnel built in 1866. Extend the drive to Glen Innes via the Old Road (109km) or to Dorrigo via Chaelundi Road and Guy Fawkes River National Park (99km).

For the more adventurous explorer there is Horseshoe Road from Bellingen to Bowraville via **Killiekrankie Mountain** on the edge of the New England Wilderness; or a climb up the escarpment to Bangalore Falls through **Bindarri National Park** on Pine Road, west of Coffs Harbour.

Park brochures with more information are available at Visitor Information Centres, or contact NPWS offices listed on the back of this brochure.

Best lookouts

Look at Me Now Headland in Moonee Beach Nature Reserve has sweeping views over a pristine estuary and coastal islands.

Muttonbird Island Nature Reserve has views of the coast, Coffs Harbour marina and city, framed by a backdrop of mountains.

Point Lookout in New England National Park has a spectacular panorama of ridge after ridge of forested wilderness.

Skywalk at Dorrigo Rainforest Centre, Dorrigo National Park has an eagle's-eye view over a rainforested escarpment and the Bellinger Valley to the sea.

Yarriabini Lookout in Yarriabini National Park looks out over the Nambucca Valley to the Great Escarpment and the coast.

Tranquil picnic areas

Iluka Bluff in Bundjalung National Park is right on the beach with a whale-watching lookout and easy access to the Iluka rainforest walk.

At **Wilson's Headland** in Yuraygir National Park, panoramic ocean views contrast with banks of spring wildflowers.

Woolgoolga Creek picnic area protects a precious remnant of lowland subtropical rainforest and is a birdwatcher's delight.

Bongil picnic area in Bongil Bongil National Park provides large group shelters with free gas BBQs, cycling trails and a canoe launch ramp.

Cedar Park in Ngambaa Nature Reserve near Macksville offers a shady respite in summer and a lovely short walk into surrounding forest.

Picnic beside **Ebor Falls** where the Guy Fawkes River takes its first spectacular plunge off the Tablelands into a rugged gorge.

Discovery

National Parks Discovery offers Ranger-guided walks, talks and tours in many local national parks. Rockpool rambles, nightstalks, canoe trips and Aboriginal cultural tours are just some of the exciting activities available during school holidays and other times. Check our website for current details.



Stretching your legs on a track somewhere

Bushwalking

Take the camera and enjoy a short stroll or pack your lunch and explore further. Most of the parks and reserves of the region offer short, medium or long walks on maintained walking tracks. To plan your walk, visit the website, contact a NPWS office or look for park brochures in Visitor Information Centres.

Following are some of the more popular and scenic walks, but there are many more to choose from.

Wonga Walk

❖ **Dorrigo National Park**, World Heritage. 6.4km circuit. Medium - short sections on uneven surfaces or stairs.

Walk in awe beneath a towering cathedral of subtropical rainforest laced with lianes and treetop gardens of orchids and ferns.

Catbirds will trick you with their calls and colourful fungi charm you. **Walk with the Birds** boardwalk provides a great vantage point to study birdlife and two splashing waterfalls provide delightful sunlit resting spots.

Lyrebird Walk

❖ **New England National Park**, World Heritage. 7km circuit. Medium - some steep sections over mossy rocks.

Start from Banksia Point and descend below the escarpment edge into moist and mossy Antarctic beech rainforest. Lyrebird concerts entertain as you follow forested slopes to Tree Fern Valley. For a shorter circuit, you can return to Banksia Point (2km circuit), or continue, and return atop the escarpment through teatree heath and basalt boulders, enjoying glimpsed views over the New England Wilderness Area and the coast beyond.



◀ *Crystal Shower Falls veils lush rainforest along Wonga Walk in Dorrigo National Park*

Lucifers Thumb

❖ **Guy Fawkes River National Park** 3.5km return. Medium (short scramble at end).

This mostly easy walk starts at Chaelundi Camping Area at the edge of this wilderness park.

After meandering along Chaelundi Creek amongst tall woodland with a grassy understory, the track passes the top of Chaelundi Falls, then gradually ascends the spine of a prominent bluff overlooking the Guy Fawkes River gorge.

From the rocky cliff top at the end of the "thumb" you can see a wilderness of ridges and peaks about you for mile after mile, through which the river winds 700 metres below.



▲ *Lucifers Thumb*

▲ *Photo above shows Angourie Bay from the Angourie Coastal Walk*

Angourie Coastal Walk

❖ **Yuraygir National Park**, between Angourie and Brooms Head. 10km one way. Medium - some steeper sections and steps.

From Mara Creek Picnic Area at the north end of the park, explore the rocky cliffs, coastal heath and sandy bays of Yuraygir National Park. The boardwalks, track and beaches promise treasures of coastal scenery, the zest of a sea breeze, and a host of native birds for bird watchers of all ages. You can carry your gear and camp overnight at Shelley Headland or Lake Arragan.



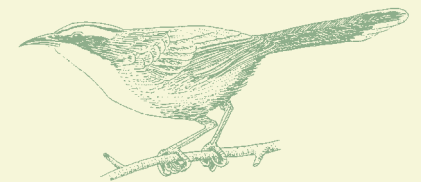
▲ *Strangler figs are a feature of the Iluka Rainforest*

Iluka Rainforest

❖ **Iluka Nature Reserve**, World Heritage. 2.5km one way. Easy, barrier-free

Coastal (or littoral) rainforest is an unexpected treat growing just behind the coastal dunes.

See strangler figs, epiphytic ferns, a tangle of vines and many fruiting trees which attract colourful pigeons and doves. Take a break from the sun for 45 minutes and walk this shady track.



Staying overnight in the bush

Cabins and camping

Accommodation in national parks

Leave the camping gear at home and stay in one of our charming cottages or cabins right in the bush or at the beach.

Cabins are available at Woody Head in Bundjalung National Park, at Tuckers Rocks in Bongil Bongil National Park and at Banksia Point in New England National Park. Contact a NPWS office for information on how to book.



Camping and park fees

Most parks in the region offer well-maintained camping areas. Facilities range from the hot showers and flushing toilets of Woody Head, to fire places, tables and basic toilets at the many idyllic, natural campsites throughout the parks.

Fees for vehicle entry and camping are used to maintain and improve facilities. Day use fees apply at some parks, and camping fees are payable on site. A guide to fees can be found over the page, along with the map.

Be a thoughtful camper

Allow your neighbours to enjoy their stay too. Lots of noise may annoy others and scare wildlife.

Wash well away from streams - soap, detergent and toothpaste can harm fish and other water life.

Leave your campsite tidy for the next visitor.

Thungutti camping area at New England National Park

Care for your parks

- Leave all pets at home - they can frighten wildlife, annoy other visitors or become lost. Domestic animals are not permitted in national parks.
- Don't feed native animals as this can make them sick or aggressive.
- Leave everything as you find it. All plants and animals, living or dead, all rock formations and all Aboriginal and historic places are protected in national parks.
- Wildfire can destroy lives and property - use only the fire-places provided and observe Total Fire Bans.
- Recycling stations are provided at popular areas, otherwise take all rubbish home for recycling and disposal.



▲ *Camping at Station Creek, Yuraygir National Park*

Healthy Parks
Healthy People



From the beach to the bush - parks and reserves of the North Coast Region

Bellinger River National Park

Linking Dorrigo and New England National Parks, these steep, forested slopes provide a scenic backdrop to the Bellinger Valley. Phone Dorrigo 6657 2309 6H

Bindarri National Park

From Dairyville drive to Bindarri Picnic Area on the sparkling Urumbilum River. Bangalore Falls walking track is accessible on unsealed roads from Ulong. Phone Coffs Harbour 6652 0900 7G

Bongil Bongil National Park

Unspoilt beaches, littoral rainforest and wildlife-rich estuaries offer an ideal setting for family activities. Picnic at Bongil Picnic Area, and launch your canoe to explore Bonville and Pine Creeks. Enjoy an easy walk from Tuckers Rocks through littoral rainforest to the rockpools of Bundagen Headland. Holiday cottage available. Phone Coffs Harbour 6652 0900 8H Book Tuckers Rocks cottage on 6655 6616

Bundjalung NP

The Esk River in the southern half of the park is the largest untouched coastal river system on the north coast. Other features include freshwater lagoons, mangrove mud flats, coastal heathlands and miles of beautiful beaches. Choose between basic camping at Black Rocks or the facilities of Woody Head camping area, where cabin accommodation is also available. Phone Grafton 6641 1500 Woody Head bookings: phone 6646 6134

Cascade National Park

Beautiful subtropical and warm temperate rainforest here is an important habitat to many upland frogs, including giant barred frog, stuttering frog and pouched frog. Box Ridge track follows part of an old timber tramway in one corner of the park. Phone Dorrigo 6657 2309 6G

Cathedral Rock National Park

A park for rock-hoppers and explorers, featuring rugged granite tors, sub-alpine heaths, a myriad of wildflowers and towering gums. Walk to the top of Cathedral Rock or Woolpack Rocks. Picnic or camp at Barokee or Native Dog Creek. Phone Dorrigo 6657 2309 3H

Chaelundi National Park

Great stands of majestic old-growth spotted gum forest and pockets of lush rainforest occur here. Cutting a deep valley through the ranges, Chandlers Creek provides idyllic remote bush camping (booking is essential as a fee and permit is required). Forest trails are suitable for bicycle or walking. Phone Dorrigo 6657 2309 5F

Coffs Coast Regional Park

Adjoining the Solitary Islands Marine Park, this string of coastal dune systems, rainforests, heathlands, headlands, coastal lakes and parklands offers plenty of opportunity for beach-based recreation. Phone Coffs Harbour 6652 0900 8F/G

Cunnawarra National Park World Heritage

One of the Great Escarpment parks, linking the snowgum woodland of alpine New England National Park with the wild ranges of Oxley Wild Rivers National Park. Beech Lookout on Styx Forest Way overlooks ancient Antarctic beech forest. Nearby Wattle Flat and Georges Junction provide quiet camping spots for bush lovers who enjoy forest drives through remote ranges. Phone Dorrigo 6657 2309 3I

Dorrigo National Park World Heritage

Dorrigo Rainforest Centre introduces visitors to the lush and beautiful subtropical rainforest of this World Heritage area. Venture onto Skywalk for a spectacular bird's eye view over the rainforest canopy or walk among the vines, ferns and soaring trunks to sparkling waterfalls. The Visitor Centre is open 9:00am to 4:30pm every day and includes an information desk, National Parks Shop, a display on rainforest and the Canopy Cafe. Phone Dorrigo 6657 2309 7H



Skywalk boardwalk at Dorrigo National Park

Dunggir National Park

Within its ridges of eucalypt forest and deep ravines of rainforest, Dunggir shelters koalas, yellow-bellied gliders and black cockatoos. Take a scenic forest drive along Kosekai Road to Kosekai Lookout to enjoy magnificent views east to Mt Yarrhapinni and Smoky Cape. Phone Coffs Harbour 6652 0900 5I

Guy Fawkes River National Park

Tracks along the edge of the Guy Fawkes River gorge provide vantage points to dramatic views over this vast and secluded wilderness and the river winding 700m below. Picnic or camp at Chaelundi Camping Area. At Ebor Falls, at the upstream end of the gorge, two spectacular waterfalls plunge over basalt ledges. Three cliff-top lookout platforms give excellent views. Phone Dorrigo 6657 2309 4F/G

Iluka Nature Reserve World Heritage

To enjoy this tiny treasure of remnant coastal rainforest take the barrier-free walking track through lilly pilli trees and strangler figs. Birdwatchers will enjoy the wide range of treetop inhabitants. Phone Grafton 6641 1500 9C

Moonee Beach Nature Reserve

Look At Me Now Headland is an important site in a creation myth belonging to local Aboriginal people. Barrier free walking tracks pass through a rare grass and heath plant community and provide views over the reserve and Moonee Creek estuary as well as a great whale watching vantage. Phone Coffs Harbour 6652 0900 8G

Mt Hyland Nature Reserve World Heritage

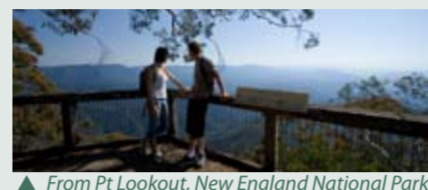
A walking track ascends through unusual cool temperate rainforest to the summit of Mt Hyland, overlooking the western Dorrigo Plateau. Phone Dorrigo 6657 2309 5G

Muttonbird Is Nature Reserve

This small island is a significant breeding site for wedge-tailed shearwaters, known as muttonbirds. It is also a highly significant site for local Gumbaynggir people, who give cultural tours in school holidays. Enjoy whale watching from the lookouts. Phone Coffs Harbour 6652 0900 8G

New England National Park World Heritage

At 1564 metres above sea level, Point Lookout offers spectacular panoramic views of the rainforested escarpment edge. Below is a wilderness of deep forested valleys and peaks, against the backdrop of the Pacific Ocean. Picnic, camp or book into one of three delightful cabins. A network of walking tracks wanders through pockets of cool temperate rainforest, snow gum woodland and sub-alpine heaths. Adventurous and well-prepared hikers can explore the trackless wilderness beyond. Phone Dorrigo 6657 2309 5H



From Pt Lookout, New England National Park

Ngambaa Nature Reserve

Old-growth forest within the reserve provides homes for threatened species such as powerful owls, koalas and giant barred frogs. Tamban Forest Drive leads to Cedar Park picnic area, where a short walking track reveals the delights of this rainforest remnant. Phone Coffs Harbour 6652 0900 6J

Nymboi Binderay National Park

This park of forested ridges surrounds the plunging granite cliffs of the Nymboiida River gorge, famed for its white water rapids. Commercial whitewater rafting companies offer exciting tours. Moonpar Forest Drive gives access to Platypus Flat picnic and camping area on the river bank, and short walks to heritage sites and old-growth forest. Phone Dorrigo 6657 2309 6F

Sherwood Nature Reserve

From Woolgoolga, drive to Woolgoolga Creek Picnic Area, set amidst lush subtropical rainforest. A scenic forest drive runs through coastal ridges and over a rugged sandstone range. Phone Coffs Harbour 6652 0900 7F

Ulidarra National Park

A drive through the park offers scenic views and old-growth coastal eucalypt forest. It is home to diverse native fauna, including koalas, masked owls, wompoo pigeons and little bent-wing bats. Phone Coffs Harbour 6652 0900 8G

Yuraygir National Park

The longest stretch of undeveloped coastline in NSW, Yuraygir offers striking cliffs, rocky headlands, isolated beaches and quiet lake systems set against a backdrop of forests, heaths and wetlands. Boardwalks, walking tracks, picnic spots and several camping areas are scattered throughout the park. Phone Grafton 6641 1500 9D/E



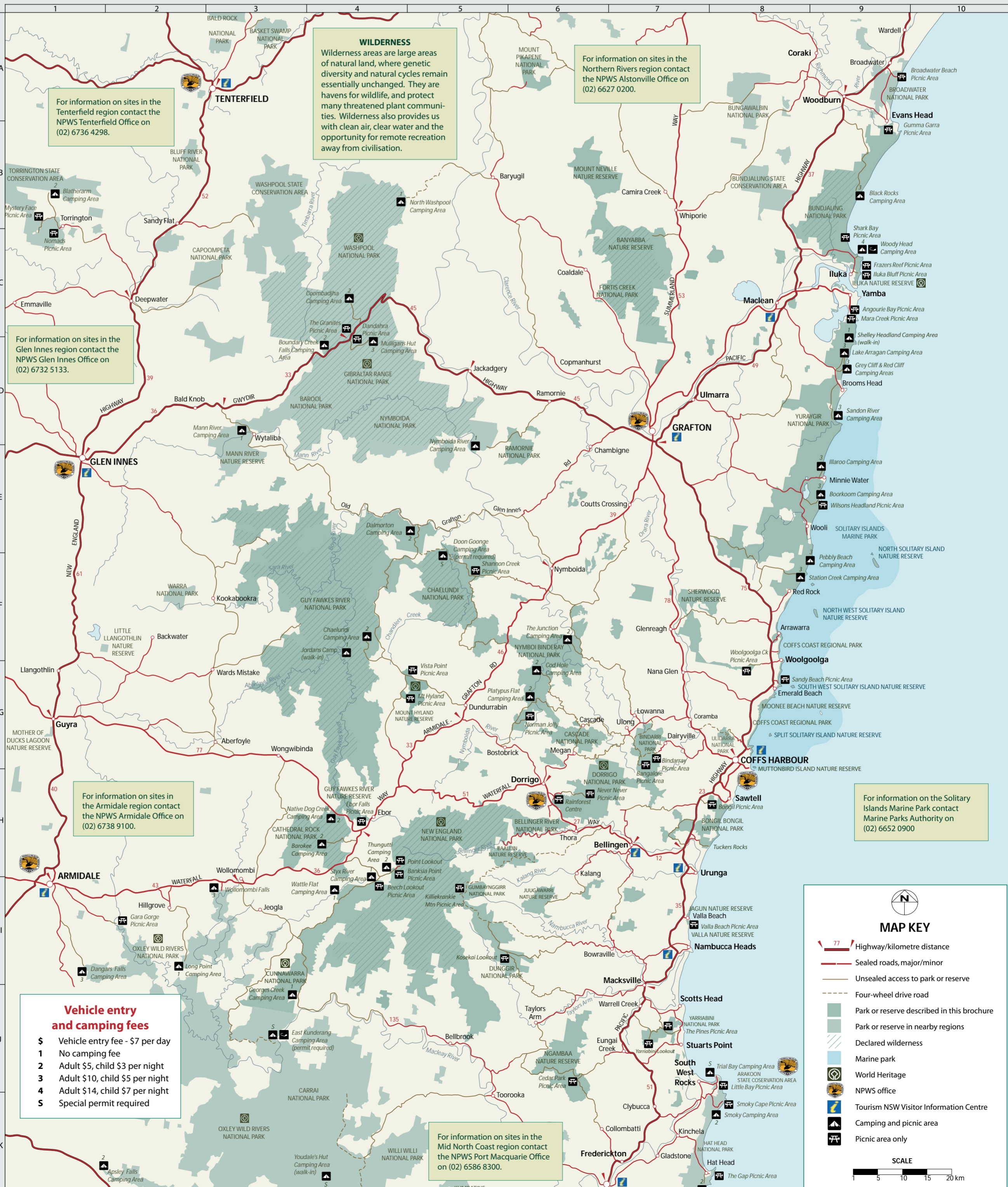
Sandon sunrise, Yuraygir National Park

Yarriabini National Park

Enjoy stunning views from Yarriabini Lookout and picnic at The Pines, where a unique sculpture highlights the park's significance to the Gumbaynggir and Dunghutti people. Phone Coffs Harbour 6652 0900 7J

Guide to symbols

- Vehicle entry fee
- Wheelchair access
- Picnic area
- Barbecue or fireplace
- Toilets
- Camping area
- Caravan park
- Showers
- Accommodation
- Kiosk
- Boat ramp
- Canoeing/kayaking
- Cycling
- Diving/snorkelling
- Fishing
- Forest drive
- Lookout
- Swimming
- Walking tracks



Vehicle entry and camping fees

- \$ Vehicle entry fee - \$7 per day
- 1 No camping fee
- 2 Adult \$5, child \$3 per night
- 3 Adult \$10, child \$5 per night
- 4 Adult \$14, child \$7 per night
- 5 Special permit required

MAP KEY

- Highway/kilometre distance
- Sealed roads, major/minor
- Unsealed road to park or reserve
- Four-wheel drive road
- Park or reserve described in this brochure
- Park or reserve in nearby regions
- Declared wilderness
- Marine park
- World Heritage
- NPWS office
- Tourism NSW Visitor Information Centre
- Camping and picnic area
- Picnic area only

SCALE
1 5 10 15 20 km