

Southern Ranges Region Draft Regional Pest Management Strategy

Part B: 2012-2015



This plan should be cited as follows:

Office of Environment and Heritage. (2011). Draft Southern Ranges Regional Pest Management Strategy Part B: 2012-2015. OEH, Sydney, NSW

For further information contact:
Regional Operations Coordinator
Southern Ranges Region
Park Management Division
National Parks and Wildlife Service
Office of Environment and Heritage
Department of Premier and Cabinet
PO Box 733 Queanbeyan NSW 2620
Telephone: 02 6229 7166

The New South Wales National Parks and Wildlife Service (NPWS) is part of the Office of Environment and Heritage (OEH). Throughout this strategy, references to NPWS should be taken to mean the NPWS carrying out functions on behalf of the Director General of the Department of Premier and Cabinet, and the Minister for the Environment.

© Copyright Office of Environment and Heritage on behalf of State of NSW

With the exception of photographs, the Office of Environment and Heritage and State of NSW are pleased to allow this material to be reproduced in whole or in part for educational and non-commercial use, provided the meaning is unchanged and its source, publisher and authorship are acknowledged. Specific permission is required for the reproduction of photographs.] Cover photo taken by Glenn Stroud (Murrumbidgee Area Ranger).

Published by:
Office of Environment and Heritage
59–61 Goulburn Street, Sydney, NSW 2000
PO Box A290, Sydney South, NSW 1232

Report pollution and environmental incidents

Environment Line: 131 555 (NSW only) or info@environment.nsw.gov.au
See also www.environment.nsw.gov.au/pollution

Phone: (02) 9995 5000 (switchboard)
Phone: 131 555 (environment information and publications requests)
Phone: 1300 361 967 (national parks, climate change and energy efficiency information and publications requests)
Fax: (02) 9995 5999
TTY: (02) 9211 4723
Email: info@environment.nsw.gov.au
Website: www.environment.nsw.gov.au

ISBN 978 1 74293 411 2
OEH 2011/0899
December 2011

Contents

Summary	iv
Acronyms	v
1. Introduction	1
2. Regional overview	1
3. Regional map	3
4. Regional prioritisation	4
5. Table of prioritised regional pest programs	6
6. Consultation	76
7. Pest species overviews	77
8. Pest distribution tables	103
9. Appendix – Relevant Threatened Species Recovery Actions	109

Summary

The vision for the NPWS Regional Pest Management Strategies is to minimise adverse impacts of pests on biodiversity, protected areas and the community. The strategies achieve this through identifying and focusing on the highest priority programs, ensuring that actions are achievable and delivering measurable outcomes. The Regional Pest Management Strategies are divided into Part A and Part B. Part A provides the broader planning framework for the management of pests by NPWS. Part B describes the local circumstances within each NPWS Region and applies the Part A framework to prioritise specific management programs.

Southern Ranges Region incorporates a diverse area of south east New South Wales, managing 93 conservation reserves on the Southern Tablelands, the Monaro, South West Slopes and the Snowy Mountains (including Kosciuszko National Park (NP)). Part B of the Regional Pest Management Strategy prioritises specific pest management programs into critical, high, medium and lower categories. Critical priorities for pest management in Southern Ranges Region include:

- wild dog control associated with 12 cooperative management plans;
- the eradication of the national Alert and NSW Class 1 weed, orange hawkweed in Kosciuszko NP;
- pest management to preserve the integrity of the endangered ecological communities: *Box-Gum Woodland*; *Natural Temperate Grassland*; *Montane Peatlands and Swamps* and the *Tablelands Snow Gum*, *Black Sallee*, *Candlebark and Ribbon Gum Grassy Woodland*;
- fox control associated with the NSW Fox Threat Abatement Plan to protect the broad-toothed rat and mountain pygmy possum;
- the removal of horses from Kosciuszko NP as guided by the Kosciuszko NP Wild Horse Management Plan; and
- the suppression of new or emerging pest species in all reserves.

The pest management priorities for Southern Ranges Region align with state and local priorities under the *Noxious Weeds Act 1993* and the *Rural Lands Protection Act 1998*. The priorities also align with regional pest management plans that include the Lachlan Regional Weed Strategy, Lachlan Catchment Vertebrate Pest Strategy, Regional Weed Strategy Murray Catchment and the Regional Weed Strategy Murrumbidgee Catchment.

Acronyms

The following acronyms are used throughout this document.

Acronym	Expanded Text
AMS	Asset Maintenance System
BPWW	Biodiversity Priorities for Widespread Weeds
CAP	Catchment Action Plan
CMA	Catchment Management Authority
DECCW	NSW Department of Environment, Climate Change & Water
KPI	Key Performance Indicator
KTP	Key Threatening Process under the TSC Act
MER	Natural Resource Management Monitoring, Evaluation and Reporting
NPW Act	<i>National Parks and Wildlife Act 1974</i>
NPWS	NSW National Parks and Wildlife Service
NRM	Natural Resource Management
NSW	New South Wales
OEH	Office of Environment and Heritage
PAS	Priorities Action Statement
PMP	Park Management Program
POM	Plan of Management
PWG	Parks and Wildlife Group, the internal name within OEH for NPWS
PWIS	Pest and Weed Information System
RLP Act	<i>Rural Lands Protection Act 1998</i>
ROP	Regional Operations Plan
RPMS	Regional Pest Management Strategy
SOP	Standard Operating Procedure
TAP	Threat Abatement Plan
TSC Act	<i>Threatened Species Conservation Act 1995</i>

1. Introduction

Pest management within the Office of Environment and Heritage (OEH) is guided by two core planning instruments:

- *NSW 2021 – A Plan to Make NSW Number One* sets out performance targets, including a specific priority action within *Goal 22 Protect Our Natural Environment* which is to *address core pest control in National Parks through the delivery of NPWS Regional Pest Management Strategies and improve educational programs and visitor access*.
- The *NSW Invasive Species Plan* provides specific goals, objectives and actions in relation to Invasive Species management.

This document is Part B of the Southern Ranges Regional Pest Management Strategy and contains the regionally specific components of the strategy including the Region's prioritised pest programs.

Part A of the strategy provides the broader planning framework for the management of pests by NPWS. It documents the corporate environment, legislation and policy context and describes the logic used for identifying, prioritising and monitoring pest management programs. It also establishes Service-wide pest management goals, objectives and actions.

This Part B describes the local circumstances within the Region and applies the Part A framework to prioritise specific pest management programs. These priorities will be included in Regional Operations Plans (ROPs) and implemented through the Asset Maintenance System (AMS). It also broadly identifies pest distribution and associated impacts across the Region.

2. Regional overview

Southern Ranges Region spans 57,180 km² across six state electorates (Albury, Burrinjuck, Goulburn, Monaro, Murrumbidgee, Wagga Wagga), four federal electorates, (Eden Monaro, Hume, Farrer, Riverina), all or parts of 20 local government areas (Albury City, Bombala, Boorowa, Cooma-Monaro, Cootamundra, Corowa, Cowra, Greater Hume, Gundagai, Harden, Junee, Palerang, Queanbeyan City, Snowy River, Tumbarumba, Tumut, Upper Lachlan, Wagga Wagga City, Yass Valley, Young) and 17 Aboriginal Land Councils (Albury and District, Batemans Bay, Bega, Bodalla, Brungle Tumut, Cobowra, Cowra, Eden, Merrimans, Mogo, Moruya, Ngannawal, Onerwal, Pejar, Wagga Wagga, Wagonga and Young).

The estate area comprises over 891,000 hectares of reserves, including 11 National Parks (NP), 67 Nature Reserves (NR) and 15 State Conservation Areas (SCA). It includes Kosciuszko NP (689,115 ha), Woomargama NP (23,576 ha), Brindabella NP/SCA (21,352ha), Tinderry NR (14,533 ha) and Tallaganda NP/SCA (21,879ha), as well as many other smaller reserves. There are nine wilderness areas within the region – Bimberi, Bogong Peaks, Bramina, Byadbo, Goobragandra, Jagungal, Pilot, Indi and Western Fall (a total area of 360,661 ha). Kosciuszko NP and other adjacent reserves form part of the Australian Alps national parks run cooperatively under a Memorandum of Understanding between NSW, Victoria, ACT and federal governments.

The Region is geographically and biologically one of the most diverse in the state. In the east of the Region are the plateaux and ranges of the drier 'rain shadow' areas of the Southern Tablelands and Monaro Plains (including the endangered ecological communities *Natural Temperate Grassland* and the *Tablelands Snow Gum, Black Sallee, Candlebark and Ribbon Gum Grassy Woodland*). In the centre are the high altitude alpine, sub-alpine and montane areas of Kosciuszko NP and Brindabella NP/SCA (including the endangered ecological community *Montane Peatlands and Swamps* and a diverse array of sub-alpine and alpine threatened species). In the south are the remote and dry Byadbo wilderness area and the Lower Snowy River corridor. To the west are the steep western ranges and lower slopes of the south-west slopes extending to the Riverina plains. The northern part of the Region contains important 'island' reserves across the Lachlan and Murrumbidgee catchments. These are ecologically important remnants that incorporate the endangered ecological community *Box-Gum Woodland* and associated threatened woodland species.

Southern Ranges Region has been successful in improving the ecological integrity of 51 reserves that were gazetted as national park estate in period 2001- 2003 (in addition to those reserves previously established). The more recent transfer of reserves under the Goulburn Sub-Region and Cypress Woodlands regional assessment process will enable the Region to further display a similar high level of natural resource management skills. Other pest management achievements within Southern Ranges Region are:

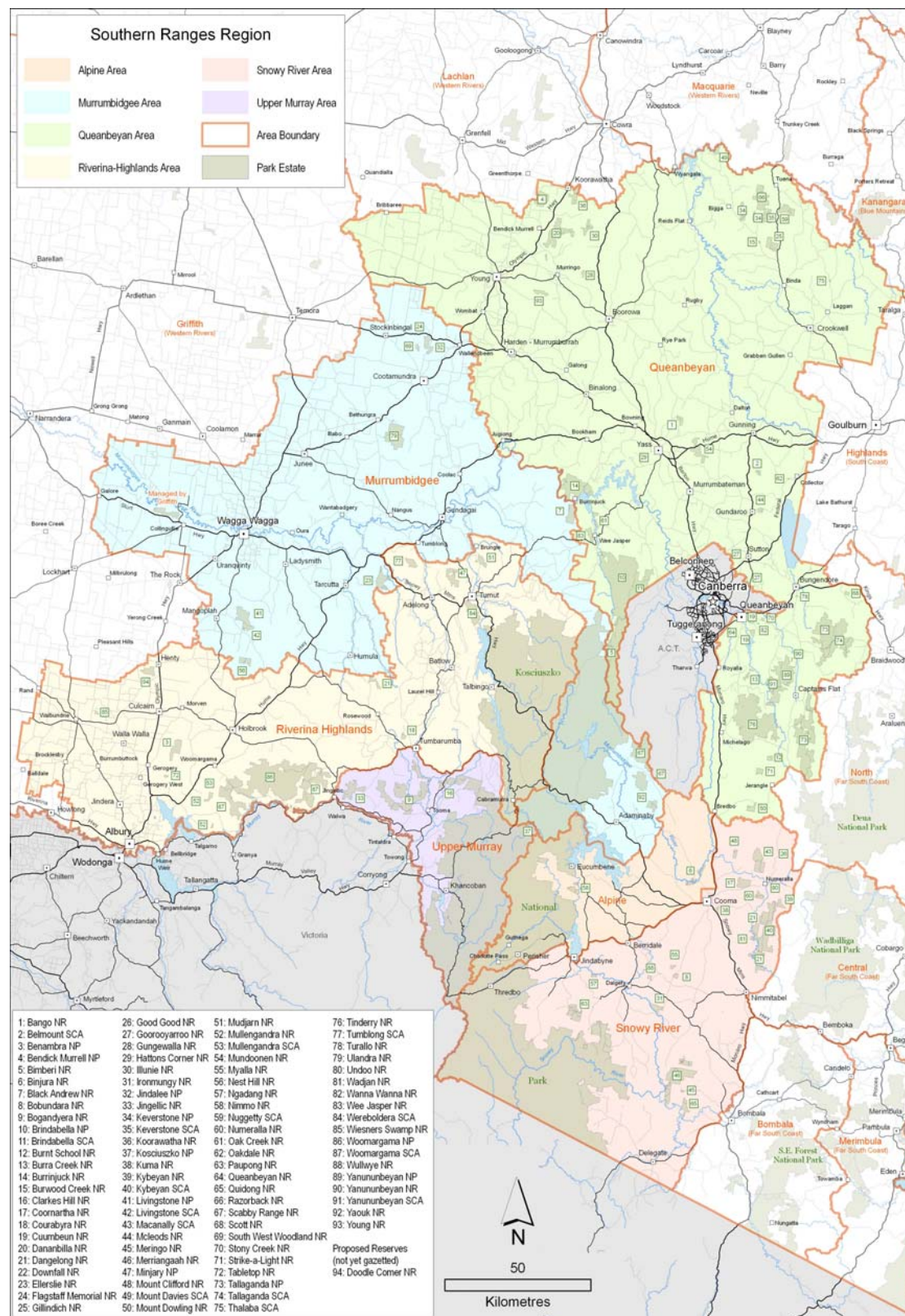
- the ongoing eradication of willows in the upper catchments of the Murrumbidgee, Tumut, Eucumbene and Snowy Rivers;
- the successful ongoing eradication of broom within Kosciuszko NP through intensive survey and control programs;
- significant investment into wild dog management that has seen stock loss on neighbouring lands reduce to record low levels; and
- the complete suppression of feral goat and feral pig numbers in a variety of reserves.

The critical priority pest management programs in Southern Ranges Region include:

- wild dog control associated with 12 cooperative management plans;
- the eradication of the national Alert and NSW Class 1 weed, orange hawkweed in Kosciuszko NP;
- pest management to preserve the integrity of the endangered ecological communities: *Box-Gum Woodland*; *Natural Temperate Grassland*; *Montane Peatlands and Swamps* and the *Tablelands Snow Gum, Black Sallee, Candlebark and Ribbon Gum Grassy Woodland*;
- fox control associated with the NSW Fox Threat Abatement Plan to protect the broad-toothed rat and mountain pygmy possum;
- the removal of horses from Kosciuszko NP as guided by the Kosciuszko NP Wild Horse Management Plan; and
- the suppression of new or emerging pest species in all reserves.

The pest management priorities for Southern Ranges Region align with state and local priorities under the *Noxious Weeds Act 1993* and the *Rural Lands Protection Act 1998*. The priorities also align with regional pest management plans that include the Lachlan Regional Weed Strategy, Lachlan Catchment Vertebrate Pest Strategy, Regional Weed Strategy Murray Catchment and the Regional Weed Strategy Murrumbidgee Catchment.

3. Regional map



4. Regional prioritisation

The following key factors are considered when determining priorities for pest management within the Region. However, a precautionary approach using risk management (as described in the risk management policy) will be applied where there is uncertainty about the impacts of the pest to the asset. The feasibility of effective control will also be a consideration.

Critical priority

C-TSC (Threatened Species Conservation):

Programs targeting pests which are, or are likely to be, significantly impacting on threatened species/populations/communities. These include the highest priorities identified in the TAPs, PAS and BPWW. e.g. undertake fox control at mountain pygmy possum or broad-toothed rat sites as identified in the Fox TAP;

C-HD (Health and Disease)

Programs that target pests which impact significantly on human health or are part of a declared national emergency e.g. outbreak of foot and mouth disease or control of feral pigs in the catchment area of a domestic water supply reservoir;

C-EC (Economic)

Programs targeting pests that impact significantly on economic enterprises e.g. wild dog control where there is potential for significant stock losses as identified in Wild Dog Management Plans;

C-NE (New and Emerging)

Programs addressing new occurrences or suppressed populations of highly invasive pest species with potential for significant impacts on park values (subject to risk/feasibility assessment), programs to control Class 1 and 2 noxious weeds;

High priority

H-IH (International Heritage)

Programs that target pests that impact significantly on World Heritage or international heritage values, e.g. pest control in RAMSAR wetlands;

H-CH (Cultural Heritage)

Programs targeting pests that impact significantly on important cultural heritage values e.g. control of rabbits undermining a historic building;

Medium priority

M-WNH (Wilderness and National Heritage)

Programs that target pests that impact significantly on Wilderness, Wild Rivers, national heritage values or other important listed values e.g. control of willows within a Wilderness area;

M-RA (Recreation and aesthetic values)

Programs that target pests that impact significantly on recreation, landscape or aesthetic values, e.g. control of blackberry on the margins of camping areas;

M-CP (Cooperative programs)

Cooperative programs (not covered in higher priorities above) targeting pests that impact significantly on park values or agricultural production (including the control of Class 3 noxious weeds or implementation of other endorsed state or regional plan), e.g. control of serrated tussock across boundaries as part of a regional control plan prepared by a regional weeds advisory committee and supported by NPWS.

Lower priority

L-LP (Localised programs)

Programs targeting pests that have localised impacts on natural ecosystems or agricultural lands that promote community skills, awareness and involvement with parks, e.g. participation in a new bush regeneration project with a local community group for control of Class 4 noxious weeds;

L-PP (Previous programs)

Previous programs targeting pests that have localised impacts on native species and ecosystems, and that can be efficiently implemented to maintain program benefits, e.g. the maintenance of areas treated previously for blackberry to continue keeping them weed free.

In some circumstances, new programs may be introduced, or priority programs extended to target pests where a control “window of opportunity” is identified e.g. where burnt areas become more accessible for ground control of weeds; where drought makes control of feral pigs and feral goats more efficient because they congregate in areas where water is available; or when a new biocontrol agent becomes available.

Future priorities for pest control will need to reflect changes in the distribution, abundance or impacts of pests that may occur in response to environmental changes including climate change. NPWS is supporting research to understand the interaction between climate change, pests and biodiversity.

5. Table of prioritised regional pest programs

Live versions of this table will be kept on OEH intranet and updated annually over the 4 year period of the strategy.

Alpine Area Reserve	Site name	Target pest or weed	Asset at risk	Aim of control	Action	Priority
Binjura NR	Goat/ Deer	Goat/ Deer		Containment	Monitoring, Ground shooting	C-NE
Binjura NR	Serrated Tussock, African Lovegrass	Serrated Tussock, African Lovegrass		Containment	Foliar spray	M-CP
Kosciuszko NP	Deer - Jagungal Ranger	Deer	Montane Peatlands and Bogs	Asset Protection	Aerial shooting, Ground shooting	C-TSC
Kosciuszko NP	Horse - Snowy Plain	Horse	Montane Peatlands and Bogs	Asset Protection	Trapping	C-TSC
Kosciuszko NP	Pig - Botheram	Pig	Montane Peatlands and Bogs	Asset Protection	Trapping, Ground baiting, Ground shooting	C-TSC
Kosciuszko NP	Pig - Eucumbene Cove	Pig	Montane Peatlands and Bogs	Asset Protection	Trapping, Ground baiting, Ground shooting	C-TSC
Kosciuszko NP	Pig - Jagungal Ranger	Pig	Montane Peatlands and Bogs	Asset Protection	Aerial shooting, Ground shooting	C-TSC
Kosciuszko NP	Pig - Kalkite	Pig	Montane Peatlands and Bogs	Asset Protection	Trapping, Ground baiting, Ground shooting	C-TSC
Kosciuszko NP	Pig - Pretty Pot	Pig	Montane Peatlands and Bogs	Asset Protection	Trapping, Ground baiting, Ground shooting	C-TSC
Kosciuszko NP	Pig - Teddys Creek	Pig	Montane Peatlands and Bogs	Asset Protection	Trapping, Ground baiting, Ground shooting	C-TSC

Alpine Area Reserve	Site name	Target pest or weed	Asset at risk	Aim of control	Action	Priority
Kosciuszko NP	Cat - Main Range	Cat	Mountain Pygmy Possum, Broadtoothed Rat, Guthega Skink	Asset Protection	Trapping, Ground shooting	C-TSC
Kosciuszko NP	Deer - Plains of Heaven/ Rainbow Lake	Deer	Montane Peatlands and Bogs	Asset Protection	Ground shooting, Aerial shooting	C-TSC
Kosciuszko NP	Fox - Broadtoothed Rat	Fox	Broadtoothed Rat	Asset Protection	Ground baiting, M44	C-TSC
Kosciuszko NP	Fox - Mountain Pygmy Possum	Fox	Mountain Pygmy Possum	Asset Protection	Ground baiting, M44	C-TSC
Kosciuszko NP	Hare - alpine	Hare	Montane Peatlands and Bogs, Leafy Anchor Plant, Anemone Buttercup, Monaro Golden Daisy, Shining Cudweed	Asset Protection	Monitoring	C-TSC
Kosciuszko NP	Horses - threatened plants and communities	Horse	Montane Peatlands and Bogs, Leafy Anchor Plant, Anemone Buttercup, Monaro Golden Daisy, Shining Cudweed	Asset Protection	Monitoring	C-TSC
Kosciuszko NP	Pig - Plains of Heaven	Pig	Montane Peatlands and Bogs	Asset Protection	Trapping, Aerial shooting, Ground baiting	C-TSC
Kosciuszko NP	Pig - Rennix	Pig	Montane Peatlands and Bogs	Asset Protection	Trapping, Aerial shooting, Ground baiting	C-TSC
Kosciuszko NP	Pig - Sawpit	Pig	Montane Peatlands and Bogs	Asset Protection	Trapping	C-TSC
Kosciuszko NP	Rabbits - Cross Country Trail Area	Rabbit	Montane Peatlands and Bogs, Leafy Anchor Plant, Anemone Buttercup, Monaro Golden Daisy, Shining Cudweed	Asset Protection	Ground baiting, Habitat modification, Ground shooting	C-TSC

Alpine Area Reserve	Site name	Target pest or weed	Asset at risk	Aim of control	Action	Priority
Kosciuszko NP	Rabbits/Hare - Collins Paddock	Rabbits/Hare	Discaria nitida	Asset Protection	Habitat modification, Ground baiting, Ground shooting	C-TSC
Kosciuszko NP	European Wasps - Visitor Areas	European Wasp	Visitor Areas	Asset Protection	Ground baiting, Habitat modification	C-HD
Kosciuszko NP	European Wasps - Guthega Trackhead, Charlettes Pass	European Wasp	Visitor Areas	Asset Protection	Ground baiting, Habitat modification, Monitoring	C-HD
Kosciuszko NP	Cooperative Wild dog/ Fox Plan Rocky Plan, Snowy Plain Area	Wild dog/Fox	Sheep/ Cattle	Asset Protection	Trapping, Ground baiting, Aerial baiting, M44	C-EC
Kosciuszko NP	Dog/Fox - Botheram FT	Wild dog/Fox	Sheep/ Cattle	Asset Protection	Ground baiting, M44	C-EC
Kosciuszko NP	Broom - Alpine Jagungal Ranger	Broom		Eradication	Foliar spray, Cut and paint, Physical/mechanical control	C-NE
Kosciuszko NP	Weeds - Benefields	Broom, St Johns Wort, Serrated Tussock, Sweet Briar, Great Mullein, Thistle, Goatsbeard, Blackberry, Vipers Bugloss		Containment	Foliar spray	C-NE
Kosciuszko NP	Weeds - Waste Point Road/ Valve House Road (Utilities)	Milfoil, St Johns Wort, Vipers Bugloss, Mullein, Exotic Trees		Containment	Foliar spray, Cut and paint	C-NE
Kosciuszko NP	Weeds - Schlunks Road (with Utilities)	Milfoil, St Johns Wort, Vipers Bugloss, Mullein, Exotic Trees, Broom		Containment	Foliar spray	C-NE
Kosciuszko NP	Weeds - Island Bend Fire Trail (Transgrid)	Milfoil, St Johns Wort, Vipers Bugloss, Mullein, Horehound, Exotic Trees		Containment	Foliar spray, Cut and paint	C-NE

Alpine Area Reserve	Site name	Target pest or weed	Asset at risk	Aim of control	Action	Priority
Kosciuszko NP	Weeds - Island Bend Road	Milfoil, St Johns Wort, Vipers Bugloss, Mullein, Mustard Weed, Black Locust, Willow, Exotic Trees		Containment	Foliar spray, Cut and paint	C-NE
Kosciuszko NP	Weeds - JPS Road (Utilities)	Milfoil, St Johns Wort, Vipers Bugloss, Mullein, Mustard Weed, Horehound, Exotic Trees		Containment	Foliar spray, Cut and paint	C-NE
Kosciuszko NP	Weeds - Island Bend Road Easements (Transgrid)	Milfoil, St Johns Wort, Vipers Bugloss, Mullein, Mustard Weed, Willow, Exotic Trees		Containment	Foliar spray, Cut and paint	C-NE
Kosciuszko NP	Weeds - Austins FT	Milfoil, St Johns Wort, Vipers Bugloss, Thistle		Containment	Foliar spray	C-NE
Kosciuszko NP	Weeds - Borrows FT	Milfoil, St Johns Wort, Vipers Bugloss, Thistle		Containment	Foliar spray	C-NE
Kosciuszko NP	Weeds - Doubtfull Gap FT	Milfoil, St Johns Wort, Vipers Bugloss, Thistle		Containment	Foliar spray	C-NE
Kosciuszko NP	Weeds - Farbald FT	Milfoil, St Johns Wort, Vipers Bugloss, Thistle		Containment	Foliar spray	C-NE
Kosciuszko NP	Weeds - Greymare FT	Milfoil, St Johns Wort, Vipers Bugloss, Thistle		Containment	Foliar spray	C-NE
Kosciuszko NP	Weeds - Happy Jacks Road	Milfoil, St Johns Wort, Vipers Bugloss, Thistle		Containment	Foliar spray	C-NE
Kosciuszko NP	Weeds - Hughes Creek FT	Milfoil, St Johns Wort, Vipers Bugloss, Thistle		Containment	Foliar spray	C-NE
Kosciuszko NP	Weeds - Koala Point FT	Milfoil, St Johns Wort, Vipers Bugloss, Thistle		Containment	Foliar spray	C-NE

Alpine Area Reserve	Site name	Target pest or weed	Asset at risk	Aim of control	Action	Priority
Kosciuszko NP	Weeds - Tolbar Point FT	Milfoil, St Johns Wort, Vipers Bugloss, Thistle		Containment	Foliar spray	C-NE
Kosciuszko NP	Weeds - Trig FT	Milfoil, St Johns Wort, Vipers Bugloss, Thistle		Containment	Foliar spray	C-NE
Kosciuszko NP	Weeds - Valentines FT	Milfoil, St Johns Wort, Vipers Bugloss, Thistle		Containment	Foliar spray	C-NE
Kosciuszko NP	Weeds - Watertanks FT	Milfoil, St Johns Wort, Vipers Bugloss, Thistle		Containment	Foliar spray	C-NE
Kosciuszko NP	Weeds - Winters FT	Milfoil, St Johns Wort, Vipers Bugloss, Thistle		Containment	Foliar spray	C-NE
Kosciuszko NP	Weeds - Benefields FT	Milfoil, St Johns Wort, Vipers Bugloss, Thistle, Broom		Containment	Foliar spray	C-NE
Kosciuszko NP	Weeds - Bourkes FT	Milfoil, St Johns Wort, Vipers Bugloss, Thistle, Broom		Containment	Foliar spray	C-NE
Kosciuszko NP	Weeds - The Portal	Milfoil, St Johns Wort, Vipers Bugloss, Thistle, Broom		Containment	Foliar spray	C-NE
Kosciuszko NP	Weeds - Tolbar Road	Milfoil, St Johns Wort, Vipers Bugloss, Thistle, Broom		Containment	Foliar spray	C-NE
Kosciuszko NP	Weeds - Botheram FT	Milfoil, St Johns Wort, Vipers Bugloss, Thistle, Great Mullein		Containment	Foliar spray	C-NE
Kosciuszko NP	Weeds - Davies Hut FT	Milfoil, St Johns Wort, Vipers Bugloss, Thistle, Great Mullein		Containment	Foliar spray	C-NE
Kosciuszko NP	Weeds - Pretty Pot	Milfoil, St Johns Wort, Vipers Bugloss, Thistle, Great Mullein		Containment	Foliar spray	C-NE

Alpine Area Reserve	Site name	Target pest or weed	Asset at risk	Aim of control	Action	Priority
Kosciuszko NP	Weeds - Teddys Creek FT	Milfoil, St Johns Wort, Vipers Bugloss, Thistle, Great Mullein		Containment	Foliar spray	C-NE
Kosciuszko NP	Weeds - Gungarlin Camping Area	Milfoil, St Johns Wort, Vipers Bugloss, Thistle, Great Mullein, Exotic Trees		Containment	Foliar spray	C-NE
Kosciuszko NP	Weeds - Pretty Pot FT	Milfoil, St Johns Wort, Vipers Bugloss, Thistle, Great Mullein, Serrated Tussock		Containment	Foliar spray	C-NE
Kosciuszko NP	Weeds - Soils FT	Milfoil, St Johns Wort, Vipers Bugloss, Thistle, Hawthorn, Exotic Trees		Containment	Foliar spray, Cut and paint	C-NE
Kosciuszko NP	Serrated Tussock - Pretty Pot	Serrated Tussock		Containment	Foliar spray	C-NE
Kosciuszko NP	Serrated Tussock, African Lovegrass - Kalkite	Serrated Tussock, African Lovegrass		Containment	Foliar spray	C-NE
Kosciuszko NP	Serrated Tussock, African Lovegrass - Waste Point	Serrated Tussock, African Lovegrass		Containment	Foliar spray	C-NE
Kosciuszko NP	Weeds - The Addit	Serrated Tussock, St Johns Wort, Vipers Bugloss		Containment	Foliar spray	C-NE
Kosciuszko NP	Weeds - Botheram	Thistle, Great Mullein, Hemlock		Containment	Foliar spray	C-NE
Kosciuszko NP	Weeds - Boobee Hut	Vipers Bugloss, Milfoil, Mullein, St Johns Wort, Thistle		Containment	Foliar spray	C-NE
Kosciuszko NP	Weeds - Botheram Plain Hut	Vipers Bugloss, Milfoil, Mullein, St Johns Wort, Thistle		Containment	Foliar spray	C-NE
Kosciuszko NP	Weeds - Cesjacks Hut	Vipers Bugloss, Milfoil, Mullein, St Johns Wort, Thistle		Containment	Foliar spray	C-NE

Alpine Area Reserve	Site name	Target pest or weed	Asset at risk	Aim of control	Action	Priority
Kosciuszko NP	Weeds - CSIRO Hut	Vipers Bugloss, Milfoil, Mullein, St Johns Wort, Thistle		Containment	Foliar spray	C-NE
Kosciuszko NP	Weeds - Davies Hut	Vipers Bugloss, Milfoil, Mullein, St Johns Wort, Thistle		Containment	Foliar spray	C-NE
Kosciuszko NP	Weeds - Dissapointment Spur Hut	Vipers Bugloss, Milfoil, Mullein, St Johns Wort, Thistle		Containment	Foliar spray	C-NE
Kosciuszko NP	Weeds - Farm Ridge Hut	Vipers Bugloss, Milfoil, Mullein, St Johns Wort, Thistle		Containment	Foliar spray	C-NE
Kosciuszko NP	Weeds - Horse Camp Hut	Vipers Bugloss, Milfoil, Mullein, St Johns Wort, Thistle		Containment	Foliar spray	C-NE
Kosciuszko NP	Weeds - Kidmans Hut	Vipers Bugloss, Milfoil, Mullein, St Johns Wort, Thistle		Containment	Foliar spray	C-NE
Kosciuszko NP	Weeds - Mackays Hut	Vipers Bugloss, Milfoil, Mullein, St Johns Wort, Thistle		Containment	Foliar spray	C-NE
Kosciuszko NP	Weeds - Mawsons Hut	Vipers Bugloss, Milfoil, Mullein, St Johns Wort, Thistle		Containment	Foliar spray	C-NE
Kosciuszko NP	Weeds - O'Keefes Hut	Vipers Bugloss, Milfoil, Mullein, St Johns Wort, Thistle		Containment	Foliar spray	C-NE
Kosciuszko NP	Weeds - Schlink Hut	Vipers Bugloss, Milfoil, Mullein, St Johns Wort, Thistle		Containment	Foliar spray	C-NE
Kosciuszko NP	Weeds - Tin Hut	Vipers Bugloss, Milfoil, Mullein, St Johns Wort, Thistle		Containment	Foliar spray	C-NE
Kosciuszko NP	Weeds - Valentines Hut	Vipers Bugloss, Milfoil, Mullein, St Johns Wort, Thistle		Containment	Foliar spray	C-NE

Alpine Area Reserve	Site name	Target pest or weed	Asset at risk	Aim of control	Action	Priority
Kosciuszko NP	Weeds - Whites River Hut	Vipers Bugloss, Milfoil, Mullein, St Johns Wort, Thistle		Containment	Foliar spray	C-NE
Kosciuszko NP	Exotic Trees - Island Bend	Willow, Exotic Trees		Containment	Cut and paint, Foliar spray, Physical/mechanical control	C-NE
Kosciuszko NP	African Lovegrass - Kosciuszko Road	African Lovegrass		Containment	Foliar spray	C-NE
Kosciuszko NP	Barbarea Verna - Kosciuszko Road (Smiggins)	Barbarea Verna	Main Range	Containment	Foliar spray	C-NE
Kosciuszko NP	Blackberry, Sweet Briar, Exotic Trees - Sawpit Creek Day Use Area	Blackberry, Sweet Briar, Exotic Trees		Containment	Foliar spray, Cut and paint	C-NE
Kosciuszko NP	Exotic Trees - Kosciusko Road (Sponars)	Exotic Trees		Containment	Cut and paint, Foliar spray	C-NE
Kosciuszko NP	Exotic Trees - Kosciuszko Road	Exotic Trees		Containment	Cut and paint	C-NE
Kosciuszko NP	Milfoil - Guthega Dam	Milfoil	Main Range	Containment	Foliar spray, Physical/mechanical control	C-NE
Kosciuszko NP	Milfoil - Illawong Walking Tracks	Milfoil	Main Range	Containment	Foliar spray, Physical/mechanical control	C-NE
Kosciuszko NP	Milfoil - Stillwell Walking Track	Milfoil		Containment	Foliar spray, Cut and paint	C-NE
Kosciuszko NP	Milfoil, Dandelion - Mt Twynam	Milfoil, Dandelion		Containment	Foliar spray	C-NE
Kosciuszko NP	Weeds - Kosciusko Road (Thredbo River - Perisher)	Milfoil, St Johns Wort, Vipers Bugloss, Mullein, Yellow Goats Beard, Five fingered cinquefoine, Mustard Weed, Silver ammobium	Main Range	Containment	Foliar spray	C-NE

Alpine Area Reserve	Site name	Target pest or weed	Asset at risk	Aim of control	Action	Priority
Kosciuszko NP	Weeds - Kosciusko Road (Perisher-Charlottes Pass)	Milfoil, St Johns Wort, Vipers Bugloss, Mullein, Yellow Goats Beard, Five fingered cinquefoine, Silver ammobium		Containment	Foliar spray	C-NE
Kosciuszko NP	Weeds - Porcupine Walking Track	Milfoil, Thistle, Vipers Bugloss, Viola, Common Mint, Great Mullein		Containment	Foliar spray, Cut and paint	C-NE
Kosciuszko NP	Weeds - Perisher Cross Country Ski Trails	Milfoil, Thistle, Vipers Bugloss, Viola, Common Mint, Great Mullein, Yellow goatsbeard, Soft rush		Containment	Foliar spray	C-NE
Kosciuszko NP	Weeds - Main Range (disturbed areas)	Milfoil, Vipers Bugloss, Dandelion, Cats Ear, Great Mullein		Containment	Foliar spray	C-NE
Kosciuszko NP	Weeds - Main Range Track	Milfoil, Vipers Bugloss, Dandelion, Cats Ear, Great Mullein		Containment	Foliar spray	C-NE
Kosciuszko NP	Weeds - Rainbow Lake Walking Track	Milfoil, Vipers Bugloss, Exotic Trees, Thistle, Great Mullein		Containment	Foliar spray, Cut and paint	C-NE
Kosciuszko NP	Weeds - Summit Road	Milfoil, Vipers Bugloss, St Johns Wort, Exotic Trees, Thistle, Cats Ear, Dandelion, Great Mullein		Containment	Foliar spray, Cut and paint	C-NE
Kosciuszko NP	Nodding Thistle - Kosciuszko Road (Thredbo River-Waste Point)	Nodding Thistle		Containment	Monitoring, Physical/mechanical control	C-NE
Kosciuszko NP	Exotic Trees - Link Road	Pine, Exotic Trees		Containment	Foliar spray, Cut and paint	C-NE

Alpine Area Reserve	Site name	Target pest or weed	Asset at risk	Aim of control	Action	Priority
Kosciuszko NP	Weeds - Powerline Track	St Johns Wort, Vipers Bugloss, Great Mullein		Containment	Foliar spray	C-NE
Kosciuszko NP	Weeds - RTA Spoil Dump (sawpit Creek)	St Johns Wort, Vipers Bugloss, Great Mullein		Containment	Foliar spray	C-NE
Kosciuszko NP	Weeds - Link Road	St Johns Wort, Vipers Bugloss, Milfoil		Containment	Foliar spray	C-NE
Kosciuszko NP	Weeds - Collins Paddock	Sweet Briar, Privet, Poplar, Mullein, Exotic Trees, Pine, Yorkshire Fog, St Johns Wort, Vipers Bugloss, Thistle, Hemlock		Containment	Foliar spray, Cut and paint	C-NE
Kosciuszko NP	Weeds - Rennix Walking Track	Thistle, Great Mullein, Exotic Trees		Containment	Foliar spray, Cut and paint	C-NE
Kosciuszko NP	Weeds - Rawsons Pass	Timothy Grass, Yorkshire Fog, Milfoil, Vipers Bugloss, Daffodils, Great Mullein		Containment	Foliar spray	C-NE
Kosciuszko NP	Weeds - Charlette Pass	Timothy Grass, Yorkshire Fog, Milfoil, Vipers Bugloss, Daffodils, St Johns Wort, Great Mullein		Containment	Foliar spray	C-NE
Kosciuszko NP	Weeds - Pump House Track	Vipers Bugloss, Thistle, Blackberry, Exotic Trees		Containment	Foliar spray	C-NE
Kosciuszko NP	Weeds - Pallaibo Walking Track	Vipers Bugloss, Thistle, Privet, Blackberry, Hemlock, Exotic Trees, Yorkshire Fog		Containment	Foliar spray, Cut and paint	C-NE
Kosciuszko NP	Weeds - Waterfall Walking Track	Vipers Bugloss, Thistle, Privet, Blackberry, Hemlock, Exotic Trees, Yorkshire Fog		Containment	Foliar spray, Cut and paint	C-NE

Alpine Area Reserve	Site name	Target pest or weed	Asset at risk	Aim of control	Action	Priority
Kosciuszko NP	Weeds - Kosciuszko Road (Ibis Hut)	Willow, Milfoil, Blackberry		Containment	Foliar spray	C-NE
Kosciuszko NP	Dog/Fox - Island Bend	Wild dog/Fox	Sheep/ Cattle	Asset Protection	Ground baiting, M44	M-RA
Kosciuszko NP	Weeds - Island Bend	Shasta Daisy, Lupins, St Johns Wort, Vipers Bugloss, Milfoil, Wild Turnip, Broom, Great Mullein, Blackberry, Sweet Briar, Cotoneaster, Daffodil, Iris, Sweet william, Forgetmenot, Thistle		Containment	Foliar spray	M-RA
Kosciuszko NP	Weeds - Kosciuszko Road Information Bay	Serrated Tussock, African Lovegrass, Milfoil, St Johns Wort, Vipers Bugloss, Mullein, Mustard Weed, Silver ammobium		Containment	Foliar spray	M-RA
Kosciuszko NP	Weeds - Thredbo River Picnic Area	Sweet Briar, Privet, Poplar, Mullein, Exotic Trees, Yorkshire Fog, St Johns Wort, Vipers Bugloss, Thistle, Hemlock		Containment	Foliar spray, Cut and paint	M-RA
Kosciuszko NP	Weeds - Kalkite	Milfoil, St Johns Wort, Vipers Bugloss, Thistle, Great Mullein, Blackberry, Hawthorn, Horehound, Elderberry, Hemlock, Sweet Briar		Containment	Foliar spray, Cut and paint, Physical/mechanical control	M-CP
Kosciuszko NP	Weeds - Waste Point	Milfoil, St Johns Wort, Vipers Bugloss, Thistle, Great Mullein, Mustard Weed, Exotic Trees		Containment	Foliar spray, Cut and paint, Physical/mechanical control	M-CP
Kosciuszko NP	Cat - Waste Point	Cat		Containment	Trapping, Ground shooting	L-LP

Alpine Area Reserve	Site name	Target pest or weed	Asset at risk	Aim of control	Action	Priority
Kosciuszko NP	Rabbit/Hare - Kalkite, Botheram, Davies Plain, Waste Point	Rabbit/Hare		Containment	Habitat modification, Ground baiting, Ground shooting	L-PP
Nimmo NR	Vipers Bugloss, Great Mullein, Thistle	Vipers Bugloss, Great Mullein, Thistle		Containment	Foliar spray	C-NE

Murrumbidgee Area Reserve	Site name	Target pest or weed	Asset at risk	Aim of control	Action	Priority
Black Andrew NR	Weeds - McPhersons Creek	Blackberry, Mullein, Patersons Curse, Thistle	Booroolong Frog	Asset Protection	Foliar spray, Splatter gun	C-TSC
Black Andrew NR	Brindabella/Wee Jasper Cooperative Wild Dog Plan	Wild dog/ Fox	Sheep/ Cattle	Asset Protection	Trapping, Ground baiting, Ground shooting	C-EC
Black Andrew NR	Goat	Goat		Containment	Aerial shooting, Ground shooting	C-NE
Black Andrew NR	Pig	Pig		Containment	Ground baiting, Trapping, Aerial shooting, Ground shooting	C-NE
Black Andrew NR	Rabbit - McPhersons Creek	Rabbit		Containment	Ground baiting, Habitat modification, Ground shooting	C-NE
Black Andrew NR	Weeds - Trails (other than Round Flat Trail)	Blackberry, Mullein, Patersons Curse, Thistle, St Johns Wort, Sweet Briar		Containment	Foliar spray	C-NE
Black Andrew NR	Transgrid (utility)	Blackberry, Patersons Curse, Thistle, St Johns Wort		Containment	Foliar spray	C-NE
Black Andrew NR	Weeds - Round Flat Trail	St Johns Wort		Containment	Foliar spray	M-CP
Ellerslie NR	Goat/ Deer	Goat/ Deer	Box-gum woodland	Asset Protection	Aerial shooting, Ground shooting	C-TSC
Ellerslie NR	Rabbit	Rabbit	Box-gum woodland	Asset Protection	Habitat modification, Ground baiting, Ground shooting	C-TSC
Ellerslie NR	Weeds - Box-gum Woodland	St Johns Wort, Patersons Curse, Blackberry, Thistle	Box-gum Woodland	Asset Protection	Foliar spray, Physical/mechanical control	C-TSC

Murrumbidgee Area Reserve	Site name	Target pest or weed	Asset at risk	Aim of control	Action	Priority
Ellerslie NR	Weeds - Sturgess Block	St Johns Wort, Patersons Curse, Blackberry, Thistle, Sweet Briar, Exotic Trees, Horehound, Apple of Sodom, Nightshade	Box-gum Woodland	Asset Protection	Foliar spray, Physical/mechanical control	C-TSC
Ellerslie NR	Weeds - Trails	St Johns Wort, Patersons Curse, Blackberry, Tree of Heaven, Thistle		Containment	Foliar spray	C-NE
Flagstaff Memorial NR	Rabbit	Rabbit	Box-gum Woodland	Asset Protection	Habitat modification	C-TSC
Flagstaff Memorial NR	Weeds	St Johns Wort, Patersons Curse, Thistle, Horehound, Apple of Sodom, Asparagus Fern	Box-gum woodland	Asset Protection	Foliar spray, Physical/mechanical control	C-TSC
Jindalee NP	Jindalee NP -weeds	Patersons Curse, Apple of Sodom, Capeweed, St Johns Wort, Thistle		Containment	Foliar spray	C-NE
Kosciuszko NP	Horse - threatened species and communities	Horse	Montane Peatlands and Swamps, Southern Corroboree Frog, Calotis glandulosa, Calotis pubescens, Pterostylis oreophila, Thesium australe, Discaria nitida, Carex raleighi, Prasophyllum retroflexum, Rutidosis leiolepis, Broad-toothed Rat	Asset Protection	Trapping, Fencing	C-TSC

Murrumbidgee Area Reserve	Site name	Target pest or weed	Asset at risk	Aim of control	Action	Priority
Kosciuszko NP	Pig - threatened species and communities	Pig	Montane Peatlands and Swamps, Northern Corroboree Frog, Southern Corroboree Frog, Calotis glandulosa, Calotis pubescens, Pterostylis oreophila, Thesium australe, Discaria nitida, Carex raleighi, Prasophyllum retroflexum, Rutidosis leiolepis	Asset Protection	Aerial shooting, Ground shooting, Ground baiting, Trapping	C-TSC
Kosciuszko NP	Horse - Cooleman Plain Management Unit	Horse	Montane Peatlands and Swamps, Southern Corroboree Frog, Calotis glandulosa, Calotis pubescens, Pterostylis oreophila, Thesium australe, Discaria nitida, Carex raleighi, Prasophyllum retroflexum, Rutidosis leiolepis, Broad-toothed Rat	Asset Protection	Trapping, Fencing	C-TSC
Kosciuszko NP	Rabbit/ Hare - Cooleman Plain	Rabbit/ Hare	Calotis glandulosa, Calotis pubescens, Pterostylis oreophila, Thesium australe, Discaria nitida, Carex raleighi, Prasophyllum retroflexum, Ranunculus anemoneus	Asset Protection	Ground baiting, Habitat modification, Ground shooting	C-TSC
Kosciuszko NP	Rabbit/ Hare - Happy Jacks	Rabbit/ Hare	Calotis glandulosa, Calotis pubescens, Pterostylis oreophila, Thesium australe, Discaria nitida, Carex raleighi, Prasophyllum retroflexum, Ranunculus anemoneus	Asset Protection	Ground baiting, Habitat modification, Ground shooting	C-TSC

Murrumbidgee Area Reserve	Site name	Target pest or weed	Asset at risk	Aim of control	Action	Priority
Kosciuszko NP	Rabbit/ Hare - Nungar East	Rabbit/ Hare	Calotis glandulosa, Calotis pubescens, Pterostylis oreophila, Thesium australe, Discaria nitida, Carex raleighi, Prasophyllum retroflexum, Ranunculus anemoneus	Asset Protection	Ground baiting, Habitat modification, Ground shooting	C-TSC
Kosciuszko NP	Ox-eye Daisy - Kelly's Plain	Ox-eye Daisy	Montane Peatlands and Swamps, Calotis glandulosa, Calotis pubescens, Broad-toothed Rat	Asset Protection	Foliar spray, Aerial spraying – boom, Monitoring	C-TSC
Kosciuszko NP	European Wasp - Recreational areas	European Wasp	Recreational areas	Asset Protection	Ground baiting, Habitat modification	C-HD
Kosciuszko NP	Horse - Snowy Mountains Hwy (Nungar Ranger)	Horse		Containment	Trapping	C-HD
Kosciuszko NP	Horse - Snowy Mountains Hwy (Tantangara Ranger)	Horse	Snowy Mountains Hwy (Tantangara Ranger)	Asset Protection	Trapping, Fencing	C-HD
Kosciuszko NP	Adaminaby/ Yaouk Cooperative Wild Dog Plan	Wild dog/ Fox	Sheep/ Cattle	Asset Protection	Trapping, Aerial baiting, M44, Ground baiting	C-EC
Kosciuszko NP	Deer	Deer		Containment	Ground shooting, Aerial shooting, Monitoring	C-NE
Kosciuszko NP	Broom - 348 individual sites	Broom		Eradication	Foliar spray, Physical/mechanical control, Monitoring	C-NE
Kosciuszko NP	Pine - general	Pine		Eradication	Cut and paint, Physical/mechanical control, Monitoring	C-NE
Kosciuszko NP	Orange Hawkweed (Nungar Ranger)	Orange Hawkweed		Eradication	Monitoring	C-NE

Murrumbidgee Area Reserve	Site name	Target pest or weed	Asset at risk	Aim of control	Action	Priority
Kosciuszko NP	Ox-eye Daisy - Nungar Ridge	Ox-eye Daisy		Containment	Aerial spraying – boom, Foliar spray, Monitoring	C-NE
Kosciuszko NP	Rabbit/ Hare - Huts	Rabbit/ Hare	Huts	Asset Protection	Ground baiting, Habitat modification	H-CH
Kosciuszko NP	Exotic trees - Huts	Hawthorn, Privet, Fruit Trees		Containment	Cut and paint, Physical/mechanical control, Monitoring	H-CH
Kosciuszko NP	Ox-eye Daisy - Management trails from Kelly's Plain	Ox-eye Daisy		Containment	Foliar spray, Monitoring	C-NE
Kosciuszko NP	Weeds - Isolated infestations - Contract	Vipers Bugloss, Mullein, St Johns Wort, Blackberry, Ox-eye Daisy, Lupins, Yarrow, Calomia, Five-finger cinquefoil, Thistle, Sweet Briar		Containment	Foliar spray	C-NE
Kosciuszko NP	Willow - General	Willow		Containment	Cut and paint, Physical/mechanical control, Monitoring	C-NE
Kosciuszko NP	Willow - Murrumbidgee River	Willow		Containment	Cut and paint, Physical/mechanical control, Monitoring	C-NE
Kosciuszko NP	Weeds - Snowy Hydro Goodradigbee Aquaduct	Vipers Bugloss, Mullein, St Johns Wort, Blackberry, Ox-eye Daisy, Lupins, Yarrow, Calomia, Five-finger cinquefoil, Thistle		Containment	Foliar spray	C-NE
Kosciuszko NP	Weeds - Transgrid (utilities) (Bimberi Ranger)	Vipers Bugloss, Mullein, St Johns Wort, Blackberry, Ox-eye Daisy, Lupins, Yarrow, Calomia, Five-finger cinquefoil, Thistle		Containment	Foliar spray	C-NE

Murrumbidgee Area Reserve	Site name	Target pest or weed	Asset at risk	Aim of control	Action	Priority
Kosciuszko NP	Weeds - Fire Trails - Bramina	Vipers Bugloss, Mullein, St Johns Wort, Blackberry, Ox-eye Daisy, Lupins, Yarrow, Calomia, Five-finger cinquefoil, Thistle, Sweet Briar		Containment	Foliar spray	C-NE
Kosciuszko NP	Weeds - Fire Trails - Cooleman Plain	Vipers Bugloss, Mullein, St Johns Wort, Blackberry, Ox-eye Daisy, Lupins, Yarrow, Calomia, Five-finger cinquefoil, Thistle, Sweet Briar		Containment	Foliar spray	C-NE
Kosciuszko NP	Weeds - Fire Trails - Long Plain/Mosquito	Vipers Bugloss, Mullein, St Johns Wort, Blackberry, Ox-eye Daisy, Lupins, Yarrow, Calomia, Five-finger cinquefoil, Thistle, Sweet Briar		Containment	Foliar spray	C-NE
Kosciuszko NP	Weeds - Public Access Trails - Bramina	Vipers Bugloss, Mullein, St Johns Wort, Blackberry, Ox-eye Daisy, Lupins, Yarrow, Calomia, Five-finger cinquefoil, Thistle, Sweet Briar		Containment	Foliar spray	C-NE
Kosciuszko NP	Weeds - Public Access Trails - Cooleman Plain	Vipers Bugloss, Mullein, St Johns Wort, Blackberry, Ox-eye Daisy, Lupins, Yarrow, Calomia, Five-finger cinquefoil, Thistle, Sweet Briar		Containment	Foliar spray	C-NE
Kosciuszko NP	Weeds - Public Access Trails - Long Plain/Mosquito	Vipers Bugloss, Mullein, St Johns Wort, Blackberry, Ox-eye Daisy, Lupins, Yarrow, Calomia, Five-finger cinquefoil, Thistle, Sweet Briar		Containment	Foliar spray	C-NE
Kosciuszko NP	African Love Grass - Snowy Mountains Hwy	African Love Grass		Containment	Foliar spray	C-NE

Murrumbidgee Area Reserve	Site name	Target pest or weed	Asset at risk	Aim of control	Action	Priority
Kosciuszko NP	Ox-eye Daisy - 4-Mile Fire Trail	Ox-eye Daisy		Containment	Foliar spray, Monitoring	C-NE
Kosciuszko NP	Ox-eye Daisy - Denison Picnic Area	Ox-eye Daisy		Containment	Foliar spray, Monitoring	C-NE
Kosciuszko NP	Ox-eye Daisy - Happy Jacks Rd	Ox-eye Daisy		Containment	Foliar spray, Monitoring	C-NE
Kosciuszko NP	Ox-eye Daisy - Nungar Plain/ Circuits Fire Trail	Ox-eye Daisy		Containment	Foliar spray, Monitoring	C-NE
Kosciuszko NP	Weeds - Powerlines (utilities) (Nungar Ranger)	Vipers Bugloss, Mullein, St Johns Wort, Blackberry, Ox-eye Daisy, Lupins, Yarrow, Calomia, Five-finger cinquefoil, Thistle		Containment	Foliar spray	C-NE
Kosciuszko NP	Weeds - Fire Trails - Eucumbene Catchment	Vipers Bugloss, Mullein, St Johns Wort, Blackberry, Ox-eye Daisy, Lupins, Yarrow, Calomia, Five-finger cinquefoil, Thistle, Sweet Briar		Containment	Foliar spray	C-NE
Kosciuszko NP	Weeds - Fire Trails - Happy Jacks	Vipers Bugloss, Mullein, St Johns Wort, Blackberry, Ox-eye Daisy, Lupins, Yarrow, Calomia, Five-finger cinquefoil, Thistle, Sweet Briar		Containment	Foliar spray	C-NE
Kosciuszko NP	Weeds - Fire Trails - Nungar East	Vipers Bugloss, Mullein, St Johns Wort, Blackberry, Ox-eye Daisy, Lupins, Yarrow, Calomia, Five-finger cinquefoil, Thistle, Sweet Briar		Containment	Foliar spray	C-NE

Murrumbidgee Area Reserve	Site name	Target pest or weed	Asset at risk	Aim of control	Action	Priority
Kosciuszko NP	Weeds - Public Access Trails - Eucumbene Catchment	Vipers Bugloss, Mullein, St Johns Wort, Blackberry, Ox-eye Daisy, Lupins, Yarrow, Calomia, Five-finger cinquefoil, Thistle, Sweet Briar		Containment	Foliar spray	C-NE
Kosciuszko NP	Weeds - Public Access Trails - Happy Jacks	Vipers Bugloss, Mullein, St Johns Wort, Blackberry, Ox-eye Daisy, Lupins, Yarrow, Calomia, Five-finger cinquefoil, Thistle, Sweet Briar		Containment	Foliar spray	C-NE
Kosciuszko NP	Weeds - Public Access Trails - Nungar East	Vipers Bugloss, Mullein, St Johns Wort, Blackberry, Ox-eye Daisy, Lupins, Yarrow, Calomia, Five-finger cinquefoil, Thistle, Sweet Briar		Containment	Foliar spray	C-NE
Kosciuszko NP	Weeds - Snowy Mountains Hwy	Vipers Bugloss, Mullein, St Johns Wort, Blackberry, Ox-eye Daisy, Lupins, Yarrow, Calomia, Five-finger cinquefoil, Thistle, Sweet Briar		Containment	Foliar spray	C-NE
Kosciuszko NP	Horse - Nungar Plain	Horse		Containment	Trapping	C-NE
Kosciuszko NP	Weeds - Snowy Hydro Murrumbidgee Gauge Station	Vipers Bugloss, Mullein, St Johns Wort, Blackberry, Ox-eye Daisy, Lupins, Yarrow, Calomia, Five-finger cinquefoil, Thistle		Containment	Foliar spray	C-NE
Kosciuszko NP	Weeds - Fire Trails - Nungar West	Vipers Bugloss, Mullein, St Johns Wort, Blackberry, Ox-eye Daisy, Lupins, Yarrow, Calomia, Five-finger cinquefoil, Thistle, Sweet Briar		Containment	Foliar spray	C-NE

Murrumbidgee Area Reserve	Site name	Target pest or weed	Asset at risk	Aim of control	Action	Priority
Kosciuszko NP	Weeds - Fire Trails - Tantangara	Vipers Bugloss, Mullein, St Johns Wort, Blackberry, Ox-eye Daisy, Lupins, Yarrow, Calomia, Five-finger cinquefoil, Thistle, Sweet Briar		Containment	Foliar spray	C-NE
Kosciuszko NP	Weeds - Public Access Trails - Nungar West	Vipers Bugloss, Mullein, St Johns Wort, Blackberry, Ox-eye Daisy, Lupins, Yarrow, Calomia, Five-finger cinquefoil, Thistle, Sweet Briar		Containment	Foliar spray	C-NE
Kosciuszko NP	Weeds - Public Access Trails - Tantangara	Vipers Bugloss, Mullein, St Johns Wort, Blackberry, Ox-eye Daisy, Lupins, Yarrow, Calomia, Five-finger cinquefoil, Thistle, Sweet Briar		Containment	Foliar spray	C-NE
Kosciuszko NP	Rabbit/ Hare - Recreational areas	Rabbit/ Hare	Recreational areas	Asset Protection	Ground baiting, Habitat modification, Ground shooting	M-RA
Kosciuszko NP	Horse - ACT Border	Horse		Containment	Trapping	M-CP
Kosciuszko NP	Rabbit/ Hare - Long Plain/Mosquito	Rabbit/ Hare	Calotis glandulosa, Calotis pubescens, Pterostylis oreophila, Thesium australe, Discaria nitida, Carex raleighi, Prasophyllum retroflexum, Ranunculs anemoneus	Asset Protection	Ground baiting, Habitat modification, Ground shooting	C-TSC
Kosciuszko NP	Rabbit/ Hare - Nungar West	Rabbit/ Hare	Calotis glandulosa, Calotis pubescens, Pterostylis oreophila, Thesium australe, Discaria nitida, Carex raleighi, Prasophyllum retroflexum, Ranunculs anemoneus	Asset Protection	Ground baiting, Habitat modification, Ground shooting	C-TSC

Murrumbidgee Area Reserve	Site name	Target pest or weed	Asset at risk	Aim of control	Action	Priority
Kosciuszko NP	Rabbit/ Hare - Tantangara	Rabbit/ Hare	Calotis glandulosa, Calotis pubescens, Pterostylis oreophila, Thesium australe, Discaria nitida, Carex raleighi, Prasophyllum retroflexum, Ranunculus anemoneus	Asset Protection	Ground baiting, Habitat modification, Ground shooting	C-TSC
Livingstone NP	Deer	Deer		Eradication	Ground shooting	C-NE
Livingstone NP	Weeds	Capeweed, Patersons Curse, St Johns Wort, Horehound, Blackberry, Thistle		Containment	Foliar spray, Physical/mechanical control, Biological control	C-NE
Livingstone NP	Fox	Fox	Sheep	Asset Protection	Ground baiting, M44	M-CP
Livingstone NP	Rabbit/ Hare	Rabbit/ Hare	Neighbours	Asset Protection	Habitat modification, Ground baiting	M-CP
Livingstone SCA	Weeds	Capeweed, Patersons Curse, St Johns Wort, Horehound, Blackberry, Thistle	Box-gum woodland, Yass Daisy	Asset Protection	Foliar spray, Physical/mechanical control, Biological control	C-TSC
Livingstone SCA	Deer	Deer		Eradication	Ground shooting	C-NE
Livingstone SCA	Fox	Fox	Sheep	Asset Protection	Ground baiting, M44	M-CP
Livingstone SCA	Rabbit/ Hare	Rabbit/ Hare	Neighbours	Asset Protection	Habitat modification, Ground baiting	M-CP
Nest Hill NR	Deer	Deer	Neighbours	Asset Protection	Ground shooting	M-CP

Murrumbidgee Area Reserve	Site name	Target pest or weed	Asset at risk	Aim of control	Action	Priority
Nest Hill NR	Fox	Fox	Sheep	Asset Protection	Ground baiting, M44	M-CP
Nest Hill NR	Rabbit	Rabbit	Neighbours	Asset Protection	Ground baiting, Habitat modification	M-CP
Scabby Range NR	Pig	Pig	Montane Peatlands and Bogs, Broad-toothed Rat	Asset Protection	Ground shooting, Trapping, Ground baiting, Aerial shooting	C-TSC
Scabby Range NR	Rabbit/Hare	Rabbit/Hare	Montane Peatlands and Bogs, Broad-toothed Rat	Asset Protection	Ground baiting, Ground shooting, Habitat modification, Monitoring	C-TSC
Scabby Range NR	Adaminaby/Yaouk Cooperative Dog Plan	Wild dog/Fox	Sheep/ Cattle	Asset Protection	Trapping, Aerial baiting, M44	C-EC
Scabby Range NR	Deer	Deer		Eradication	Monitoring	C-NE
Scabby Range NR	Broom	Broom		Eradication	Foliar spray, Cut and paint, Physical/mechanical control	C-NE
Scabby Range NR	Hawthorn, Sweet Briar, Poplars	Hawthorn, Sweet Briar, Poplars		Containment	Cut and paint, Foliar spray	C-NE
Scabby Range NR	Weeds - general	Nodding Thistle, Mullein, Vipers Bugloss, Sweet Briar, Horehound			Foliar spray, Biological control	C-NE
South West Woodland NR - Yeo Yeo	Weeds - general	Apple of Sodom, Capeweed, Patersons Curse, Sorrel, Horehound, Thistle, Nightshade, Blackberry			Foliar spray	C-NE
Ulandra NR	Deer	Deer			Ground shooting, Monitoring	C-NE
Ulandra NR	Pig	Pig			Ground baiting, Ground shooting	C-NE

Murrumbidgee Area Reserve	Site name	Target pest or weed	Asset at risk	Aim of control	Action	Priority
Ulandra NR	Rabbit	Rabbit			Ground baiting, Habitat modification, Ground shooting	C-NE
Ulandra NR	Weeds - general	St Johns Wort, Sweet Briar, Patersons Curse, Blackberry, Horehound, Apple of Sodom			Foliar spray	C-NE
Ulandra NR	Fox	Fox	Sheep		Ground baiting, M44	M-CP
Ulandra NR	Apple of Sodom - Eulolo Flat/ Beverly Hills	Apple of Sodom			Foliar spray	M-CP
Ulandra NR	Patersons Curse - Eulolo Flat	Patersons Curse			Biological control	L-PP
Yaouk NR	Adaminaby/Yaouk Cooperative Dog Plan	Wild dog/Fox	Sheep/ Cattle		Trapping, Aerial baiting, M44, Ground baiting	C-EC
Yaouk NR	Deer	Deer			Monitoring	C-NE
Yaouk NR	Mullein, Vipers Bugloss, Sweet Briar	Mullein, Vipers Bugloss, Sweet Briar			Foliar spray	C-NE

Queanbeyan Area Reserve	Site name	Target pest or weed	Asset at risk	Aim of control	Action	Priority
Bendick Murrell NR	Goat/ Deer	Goat/ Deer		Containment	Monitoring	C-NE
Bimberi NR	Brindabella/Wee Jasper Cooperative Wild Dog Plan	Wild dog/Fox	Sheep/ Cattle	Asset Protection	Trapping	C-EC
Bimberi NR	Rabbit - community program	Rabbit	Neighbours	Asset Protection	Ground baiting	M-CP
Brindabella NP	Blackberry - Betty Brook CkBox-gum woodlands	Blackberry	Box-gum woodlands	Asset Protection	Foliar spray	C-TSC
Brindabella NP	Brindabella/Wee Jasper Cooperative Wild Dog Plan	Wild dog/Fox		Containment	Trapping, Ground baiting	C-EC
Brindabella NP	Deer - general	Deer		Containment	Monitoring, Ground shooting	C-NE
Brindabella NP	Yarrow - Two Sticks	Yarrow		Containment	Foliar spray	C-NE
Brindabella NP	Blackberry - Hume Sawmill	Blackberry	Hume Sawmill	Asset Protection	Foliar spray	H-CH
Brindabella NP	Pine - Mitchells Ringings, Flea Creek, McIntyres	Pine		Containment	Physical/mechanical control	C-NE
Brindabella NP	St Johns Wort, Thistle - Trails	St Johns Wort, Thistle		Containment	Foliar spray	C-NE
Brindabella NP	Rabbit - Campgrounds	Rabbit		Containment	Ground baiting, Ground shooting	M-RA
Brindabella NP	Blackberry - Follies, McIntyres, Webbs, Waterfall, Gentle Annie Trails	Blackberry	Follies, McIntyres, Webbs, Waterfall, Gentle Annie Trails	Asset Protection	Foliar spray	M-RA
Brindabella NP	Blackberry - Top Crossing Day Use Area	Blackberry	Top Crossing Day Use Area	Asset Protection	Foliar spray	M-RA

Queanbeyan Area Reserve	Site name	Target pest or weed	Asset at risk	Aim of control	Action	Priority
Brindabella NP	Blackberry, Sweet Briar - Flea Creek Campground	Blackberry, Sweet Briar	Flea Creek Campground	Asset Protection	Foliar spray	M-RA
Brindabella NP	Blackberry, Sweet Briar - Lowells Flat Campground	Blackberry, Sweet Briar	Lowells Flat Campground	Asset Protection	Foliar spray	M-RA
Brindabella NP	Blackberry, Sweet Briar - McIntyres Campground	Blackberry, Sweet Briar	McIntyres Campground	Asset Protection	Foliar spray	M-RA
Brindabella NP	Patersons Curse, Thistle - Flea Creek Campground	Patersons Curse, Thistle	Flea Creek Campground	Asset Protection	Foliar spray	M-RA
Brindabella NP	Patersons Curse, Thistle - Lowells Flat Campground	Patersons Curse, Thistle	Lowells Flat Campground	Asset Protection	Foliar spray	M-RA
Brindabella NP	Patersons Curse, Thistle - McIntyres Campground	Patersons Curse, Thistle	McIntyres Campground	Asset Protection	Foliar spray	M-RA
Brindabella NP	St Johns Wort, Hemlock, Daytura - Flea Creek Campground	St Johns Wort, Hemlock, Daytura	Flea Creek Campground	Asset Protection	Foliar spray	M-RA
Brindabella NP	St Johns Wort, Hemlock, Daytura - Lowells Flat Campground	St Johns Wort, Hemlock, Daytura	Lowells Flat Campground	Asset Protection	Foliar spray	M-RA
Brindabella NP	St Johns Wort, Hemlock, Daytura - McIntyres Campground	St Johns Wort, Hemlock, Daytura	McIntyres Campground	Asset Protection	Foliar spray	M-RA
Brindabella NP	St Johns Wort, Thistle - Top Crossing Day Use Area	St Johns Wort, Thistle	Top Crossing Day Use Area	Asset Protection	Foliar spray	M-RA
Brindabella NP	Pig - general	Pig		Containment	Ground baiting	M-CP

Queanbeyan Area Reserve	Site name	Target pest or weed	Asset at risk	Aim of control	Action	Priority
Brindabella NP	Weed - Powerlines - Transgrid and Country Energy	St Johns Wort, Patersons Curse, Blackberry		Containment	Foliar spray	M-CP
Brindabella NP	St Johns Wort - Mitchells Ringings	St Johns Wort		Containment	Foliar spray	L-PP
Brindabella SCA	Blackberry - higher altitudes	Blackberry	Mountain Peatlands and Bogs, Corroboree Frogs	Asset Protection	Foliar spray	C-TSC
Brindabella SCA	Pig/ Deer - ACT Catchment	Pig/ Deer		Containment	Monitoring	C-HD
Brindabella SCA	Brindabella/Wee Jasper Cooperative Wild Dog Plan	Wild dog/Fox		Containment	Trapping, Ground baiting	C-EC
Brindabella SCA	Deer - general	Deer		Containment	Monitoring	C-NE
Brindabella SCA	Blackberry - Coree Campground	Blackberry	Coree Campground	Asset Protection	Foliar spray	M-RA
Brindabella SCA	Pig - general	Pig		Containment	Ground baiting	M-CP
Brindabella SCA	Weeds - Powerlines - Transgrid and Country Energy	St Johns Wort, Patersons Curse, Blackberry		Containment	Foliar spray	M-CP
Burnt School NR	Serrated Tussock	Serrated Tussock		Containment	Foliar spray	C-NE
Burnt School NR	Sweet Briar, St Johns Wort	Sweet Briar, St Johns Wort		Containment	Foliar spray	C-NE
Burra Creek NR	Blackberry, St Johns Wort, Patersons Curse	Blackberry, St Johns Wort, Patersons Curse		Containment	Foliar spray	C-NE
Burrinjuck NR	Patersons Curse, Thistle, Capeweed - Box-gum woodlands	Patersons Curse, Thistle, Capeweed	Box-gum woodland	Asset Protection	Foliar spray	C-TSC

Queanbeyan Area Reserve	Site name	Target pest or weed	Asset at risk	Aim of control	Action	Priority
Burrinjuck NR	Serrated Tussock - Box-gum woodlands	Serrated Tussock	Box-gum woodland	Asset Protection	Foliar spray	C-TSC
Burrinjuck NR	St Johns Wort - Box-gum woodlands	St Johns Wort	Box-gum woodland	Asset Protection	Foliar spray	C-TSC
Burrinjuck NR	St Johns Wort - Threatened plant sites	St Johns Wort	Ammobium craspanoides, Caladinia concolor	Asset Protection	Foliar spray, Physical/mechanical control	C-TSC
Burrinjuck NR	Burrinjuck Cooperative Wild Dog Plan	Wild dog/Fox	Sheep/ Cattle	Asset Protection	Ground baiting, Trapping, M44	C-EC
Burrinjuck NR	Goat/Deer	Goat/Deer		Containment	Aerial shooting	C-NE
Burrinjuck NR	Blackberry, Sweet Briar - General (not Carrolls Ck)	Blackberry, Sweet Briar		Containment	Foliar spray	C-NE
Burrinjuck NR	Patersons Curse, Thistle, Capeweed - General (not Carrolls Ck)	Patersons Curse, Thistle, Capeweed		Containment	Foliar spray	C-NE
Burrinjuck NR	Patersons Curse, Thistle, Capeweed - Powerlines	Patersons Curse, Thistle, Capeweed		Containment	Foliar spray	C-NE
Burrinjuck NR	St Johns Wort - General	St Johns Wort		Containment	Foliar spray	C-NE
Burrinjuck NR	St Johns Wort - Powerlines	St Johns Wort		Containment	Foliar spray	C-NE
Burwood Creek NR	Blackberry, Sweet Briar	Blackberry, Sweet Briar	Box-Gum Woodland	Asset Protection	Foliar spray, Monitoring	C-TSC
Burwood Creek NR	Serrated Tussock, Thistle, Horehound	Serrated Tussock, Thistle, Horehound	Box-Gum Woodland	Asset Protection	Foliar spray, Monitoring	C-TSC
Burwood Creek NR	St Johns Wort	St Johns Wort	Box-Gum Woodland	Asset Protection	Foliar spray, Monitoring	C-TSC

Queanbeyan Area Reserve	Site name	Target pest or weed	Asset at risk	Aim of control	Action	Priority
Cuumbeun NR	Rabbit	Rabbit	Box-gum Woodland	Asset Protection	Habitat modification, Ground baiting	C-TSC
Cuumbeun NR	Blackberry, Sweet Briar - creeklines and valleys	Blackberry, Sweet Briar	Box-gum woodlands	Asset Protection	Foliar spray	C-TSC
Cuumbeun NR	Patersons Curse, Great Mullein - Powerlines	Patersons Curse, Great Mullein	Box-gum woodland	Asset Protection	Foliar spray	C-TSC
Cuumbeun NR	Serrated Tussock	Serrated Tussock	Box-gum woodlands	Asset Protection	Foliar spray	C-TSC
Cuumbeun NR	St Johns Wort, Thistle, Horehound - northern end	St Johns Wort, Thistle, Horehound	Box-gum woodlands	Asset Protection	Foliar spray	C-TSC
Dananbilla NR	Rabbit - Box-gum Woodland	Rabbit	Box-gum woodland	Asset Protection	Monitoring, Habitat modification	C-TSC
Dananbilla NR	Bathurst Burr - Box-gum woodland	Bathurst Burr	Box-gum woodland	Asset Protection	Foliar spray, Physical/mechanical control	C-TSC
Dananbilla NR	Cocksfoot - Box-gum woodland	Cocksfoot	Box-gum woodland	Asset Protection	Foliar spray, Physical/mechanical control	C-TSC
Dananbilla NR	Pasture Grasses - Box-gum woodland	Pasture Grasses	Box-gum woodland	Asset Protection	Foliar spray, Physical/mechanical control	C-TSC
Dananbilla NR	Patersons Curse, Thistle, Capeweed - lowlands	Patersons Curse, Thistle, Capeweed	Box-gum woodland	Asset Protection	Foliar spray	C-TSC
Dananbilla NR	Spiny Burr-grass - Box-gum woodland	Spiny Burr-grass	Box-gum woodland	Asset Protection	Foliar spray, Fire	C-TSC
Dananbilla NR	St Johns Wort, Sweet Briar - New Addition	St Johns Wort, Sweet Briar	Box-gum woodland	Asset Protection	Foliar spray	C-TSC

Queanbeyan Area Reserve	Site name	Target pest or weed	Asset at risk	Aim of control	Action	Priority
Dananbilla NR	Goat/ Deer	Goat/ Deer		Eradication	Aerial shooting	C-NE
Dananbilla NR	Fox	Fox	Sheep	Asset Protection	Monitoring	M-CP
Goorooyarroo NR	St Johns Wort - New section	St Johns Wort, Thistle	Box-gum woodland	Asset Protection	Foliar spray	C-TSC
Goorooyarroo NR	Patersons Curse, Thistle	Patersons Curse, Thistle		Containment	Foliar spray	C-NE
Gungewalla NR	Weeds - Box-gum woodlands - western boundary & internal gullies	Patersons Curse, Capeweed	Box-gum woodland	Asset Protection	Foliar spray	C-TSC
Gungewalla NR	Fox	Fox	Sheep	Asset Protection	Monitoring	M-CP
Hattons Corner NR	Patersons Curse, Thistle	Patersons Curse, Thistle	Yass Plains Grassland	Eradication	Foliar spray	L-PP
Hattons Corner NR	St Johns Wort, Sweet Briar, Blackberry	St Johns Wort, Sweet Briar, Blackberry	Yass Plains Grassland	Eradication	Foliar spray	L-PP
Illunie NR	Rabbit - Box-gum Woodland	Rabbit	Box-gum woodland	Asset Protection	Ground baiting, Habitat modification	C-TSC
Illunie NR	Black Locust - Box-gum woodlands	Black Locust	Box-gum woodland	Asset Protection	Foliar spray, Cut and paint	C-TSC
Illunie NR	Patersons Curse, Capeweed, Thistle - Box-gum woodlands - cleared	Patersons Curse, Capeweed, Thistle	Box-gum woodland	Asset Protection	Foliar spray	C-TSC
Illunie NR	St Johns Wort - Box-gum woodlands	St Johns Wort	Box-gum woodland	Asset Protection	Foliar spray	C-TSC

Queanbeyan Area Reserve	Site name	Target pest or weed	Asset at risk	Aim of control	Action	Priority
Illunie NR	Sweet Vernal Grass - Box-gum woodlands - lowlands	Sweet Vernal Grass	Box-gum woodland	Asset Protection	Foliar spray, Physical/mechanical control	C-TSC
Illunie NR	Patersons Curse, Thistle - Ironbark woodlands (cleared)	Patersons Curse, Thistle	n	Containment	Foliar spray	C-NE
Illunie NR	Fox	Fox	Sheep	Asset Protection	Monitoring	M-CP
Keverstone NP	Blackberry - Box-Gum Woodland	Blackberry	Box-Gum Woodland	Asset Protection	Foliar spray	C-TSC
Keverstone NP	Serrated Tussock - Box-Gum Woodland	Serrated Tussock	Box-Gum Woodland	Asset Protection	Foliar spray	C-TSC
Keverstone NP	Serrated Tussock - Yass Daisy site	Serrated Tussock	Yass Daisy	Asset Protection	Foliar spray	C-TSC
Keverstone NP	Blackberry	Blackberry		Containment	Foliar spray	C-NE
Keverstone NP	Patersons Curse	Patersons Curse		Containment	Foliar spray	C-NE
Keverstone NP	Serrated Tussock - general	Serrated Tussock		Containment	Foliar spray	C-NE
Keverstone NP	St Johns Wort	St Johns Wort		Containment	Foliar spray	C-NE
Keverstone SCA	Blackberry	Blackberry		Containment	Foliar spray	C-NE
Keverstone SCA	Patersons Curse	Patersons Curse		Containment	Foliar spray	C-NE
Keverstone SCA	Serrated Tussock	Serrated Tussock		Containment	Foliar spray	C-NE
Keverstone SCA	St Johns Wort	St Johns Wort		Containment	Foliar spray	C-NE

Queanbeyan Area Reserve	Site name	Target pest or weed	Asset at risk	Aim of control	Action	Priority
Koorawatha NR	Goat/ Deer	Goat/ Deer	Box-gum woodland	Asset Protection	Aerial shooting, Ground shooting, Monitoring	C-TSC
Koorawatha NR	Pasture Grasses - Box-gum woodland	Pasture Grasses	Box-gum woodland	Asset Protection	Physical/mechanical control, Foliar spray	C-TSC
Koorawatha NR	Patersons Curse, Capeweed, Thistle, Paddy Melon -Box-gum woodland	Patersons Curse, Capeweed, Thistle, Paddy Melon	Box-gum woodland	Asset Protection	Foliar spray	C-TSC
Koorawatha NR	Spiny Burr-grass - Box-gum woodland	Spiny Burr-grass	Box-gum woodland	Asset Protection	Foliar spray, Fire	C-TSC
Koorawatha NR	St Johns Wort, Bathurst Burr - Box-gum woodland	St Johns Wort, Bathurst Burr, Catshead, Kharki weed	Box-gum woodland	Asset Protection	Foliar spray, Biological control	C-TSC
Koorawatha NR	African Boxthorn, Green Cestrum - Box-gum woodland	African Boxthorn, Green Cestrum	Box-gum woodland	Containment	Foliar spray, Cut and paint	C-NE
Koorawatha NR	St Johns Wort, Spiny Burr-grass, Paddy Melon	St Johns Wort, Spiny Burr-grass, Paddy Melon		Containment	Foliar spray, Physical/mechanical control	C-NE
Koorawatha NR	Fox	Fox	Sheep	Asset Protection	Monitoring	M-CP
McCleods NR	European Starling	European Starling	Superb Parrot	Asset Protection	Monitoring	C-TSC
McCleods NR	Bathurst Burr - Box-gum woodland	Bathurst Burr	Box-Gum Woodland	Asset Protection	Foliar spray	C-TSC
McCleods NR	Blackberry, Sweet briar - Box-Gum Woodland	Blackberry, Sweet briar	Box-Gum Woodland	Asset Protection	Monitoring	C-TSC
McCleods NR	Serrated Tussock - Box-Gum Woodland	Serrated Tussock	Box-Gum Woodland	Asset Protection	Foliar spray	C-TSC

Queanbeyan Area Reserve	Site name	Target pest or weed	Asset at risk	Aim of control	Action	Priority
McCleods NR	Serrated Tussock - Golden Sun Moth	Serrated Tussock	Golden Sun Moth	Asset Protection	Foliar spray	C-TSC
McCleods NR	Serrated Tussock (general)	Serrated Tussock		Containment	Foliar spray	C-NE
Mount Dowling NR	Serrated Tussock - Nth Eastern boundary, Mt Dowling trig	Serrated Tussock		Containment	Foliar spray	C-NE
Mundoonen NR	Patersons Curse, Thistle, Mullein	Patersons Curse, Thistle, Mullein		Containment	Foliar spray	C-NE
Mundoonen NR	Serrated Tussock	Serrated Tussock		Containment	Foliar spray	C-NE
Mundoonen NR	St Johns Wort, Blackberry, Sweet Briar	St Johns Wort, Blackberry, Sweet Briar		Containment	Foliar spray	C-NE
Mundoonen NR	Fox	Fox	Eastern Pygmy Possum, Koala	Asset Protection	Ground baiting, M44	M-CP
Nuggety SCA	Pig	Pig	Booroolong Frog, Large-footed Myotis	Asset Protection	Ground baiting	C-TSC
Nuggety SCA	Blackberry, Sweet Briar	Blackberry, Sweet Briar		Containment	Foliar spray	C-NE
Nuggety SCA	Serrated Tussock	Serrated Tussock		Containment	Foliar spray	C-NE
Nuggety SCA	St Johns Wort	St Johns Wort		Containment	Foliar spray	C-NE
Oak Creek NR	Serrated Tussock - Parlours	Serrated Tussock		Containment	Foliar spray	C-NE
Oak Creek NR	Blackberry, Sweet Briar - boundary & trails	Blackberry, Sweet Briar	Neighbours	Asset Protection	Foliar spray	M-CP
Oak Creek NR	Patersons Curse, Thistle - boundary	Patersons Curse, Thistle	Neighbours	Asset Protection	Foliar spray	M-CP

Queanbeyan Area Reserve	Site name	Target pest or weed	Asset at risk	Aim of control	Action	Priority
Oak Creek NR	St Johns Wort - boundary & trails	St Johns Wort	Neighbours	Asset Protection	Foliar spray	M-CP
Oakdale NR	Pine, Fruit trees, Cootamundra Wattle	Pine, Fruit trees, Cootamundra Wattle	Tablelands Snow-gum	Asset Protection	Cut and paint	C-TSC
Oakdale NR	Serrated Tussock	Serrated Tussock	Tablelands Snow-gum	Asset Protection	Foliar spray	C-TSC
Oakdale NR	St Johns Wort, Thistle, Agapanthas	St Johns Wort, Thistle, Agapanthas	Tablelands Snow-gum	Asset Protection	Foliar spray	C-TSC
Oakdale NR	Sweet Briar, Blackberry, Hawthorn	Sweet Briar, Blackberry, Hawthorn	Tablelands Snow-gum	Asset Protection	Monitoring	C-TSC
Queanbeyan NR	Rabbit	Rabbit	Natural Temperate Grasslands with Button Wrinklewort	Asset Protection	Habitat modification	C-TSC
Queanbeyan NR	Blackberry, Sweet Briar	Blackberry, Sweet Briar	Natural Temperate Grasslands with Button Wrinklewort	Asset Protection	Foliar spray	C-TSC
Queanbeyan NR	Pasture Grasses	Pasture Grasses	Natural Temperate Grasslands with Button Wrinklewort	Asset Protection	Monitoring	C-TSC
Queanbeyan NR	Patersons Curse, Thistle, Great Mullein	Patersons Curse, Thistle, Great Mullein	Natural Temperate Grasslands with Button Wrinklewort	Asset Protection	Foliar spray	C-TSC
Queanbeyan NR	Poplars, Tree of Heaven, Pine, Elms, Fruit Trees	Poplars, Tree of Heaven, Pine, Elms, Fruit Trees	Natural Temperate Grasslands with Button Wrinklewort	Asset Protection	Physical/mechanical control	C-TSC

Queanbeyan Area Reserve	Site name	Target pest or weed	Asset at risk	Aim of control	Action	Priority
Queanbeyan NR	Serrated Tussock, African Lovegrass, Chilean Needlegrass	Serrated Tussock, African Lovegrass, Chilean Needlegrass	Natural Temperate Grasslands with Button Wrinklewort	Asset Protection	Foliar spray	C-TSC
Queanbeyan NR	St Johns Wort	St Johns Wort	Natural Temperate Grasslands with Button Wrinklewort	Asset Protection	Foliar spray	C-TSC
Razorback NR	Blackberry, Sweet Briar, Hawthorn	Blackberry, Sweet Briar, Hawthorn		Containment	Foliar spray	C-NE
Razorback NR	Patersons Curse	Patersons Curse		Containment	Foliar spray	C-NE
Razorback NR	Serrated Tussock	Serrated Tussock		Containment	Foliar spray	C-NE
Razorback NR	St Johns Wort, Thistle	St Johns Wort, Thistle		Containment	Foliar spray	C-NE
Scott NR	Serrated Tussock	Serrated Tussock		Containment	Foliar spray	C-NE
Scott NR	St Johns Wort	St Johns Wort		Containment	Foliar spray	C-NE
Scott NR	Thistle, Patersons Curse	Thistle, Patersons Curse		Containment	Foliar spray	C-NE
Stony Creek NR	Blackberry, Sweet Briar	Blackberry, Sweet Briar	Box-gum woodland	Asset Protection	Foliar spray	C-TSC
Stony Creek NR	Serrated Tussock	Serrated Tussock	Box-gum woodland	Asset Protection	Foliar spray	C-TSC
Stony Creek NR	St Johns Wort, Thistle	St Johns Wort, Thistle	Box-gum woodland	Asset Protection	Foliar spray	C-TSC
Tallaganda NP	Goat - Montane Peatlands and Swamps	Goat	Montane Peatlands and Swamps	Asset Protection	Monitoring, Aerial shooting	C-TSC

Queanbeyan Area Reserve	Site name	Target pest or weed	Asset at risk	Aim of control	Action	Priority
Tallaganda NP	Pig - Montane Peatlands and Swamps	Pig	Montane Peatlands and Swamps	Asset Protection	Monitoring, Ground baiting	C-TSC
Tallaganda NP	Thistle - Montane Peatlands and Swamps	Thistle	Montane Peatlands and Swamps	Asset Protection	Foliar spray	C-TSC
Tallaganda NP	Goat, Deer - general	Goat, Deer		Eradication	Aerial shooting	C-NE
Tallaganda NP	Pine wildings - plantation	Pine wildings		Containment	Cut and paint, Basal or stem injection, Foliar spray	C-NE
Tallaganda NP	Serrated Tussock - Wild Cattle Flat area	Serrated Tussock		Containment	Foliar spray	C-NE
Tallaganda NP	Willow - Ballinifad & Mulloon Cks	Willow		Containment	Cut and paint, Basal or stem injection, Foliar spray	C-NE
Tallaganda NP	Pig - general	Pig	Neighbours	Asset Protection	Trapping	M-CP
Tallaganda SCA	Goat, Deer - General	Goat, Deer		Eradication	Aerial shooting	C-NE
Tallaganda SCA	Willow - Ballinifad & Mulloon Cks	Willow		Containment	Cut and paint, Basal or stem injection, Foliar spray	C-NE
Thalaba SCA	Blackberry	Blackberry		Containment	Foliar spray	C-NE
Tinderry NR	Serrated Tussock - Montane Peatlands and Swamps	Deer, Goat	Montane Peatlands and Swamps, Small-leaved gum, Kydra Dampiera	Asset Protection	Monitoring	C-TSC
Tinderry NR	Pig - Montane Peatlands and Swamps	Pig	Montane Peatlands and Swamps	Asset Protection	Ground baiting, Trapping	C-TSC
Tinderry NR	Serrated Tussock - neighbours	Serrated Tussock		Containment	Foliar spray	C-EC

Queanbeyan Area Reserve	Site name	Target pest or weed	Asset at risk	Aim of control	Action	Priority
Tinderry NR	Blackberry	Blackberry		Containment	Monitoring	C-NE
Tinderry NR	Patersons Curse, Thistle	Patersons Curse, Thistle		Containment	Foliar spray	C-NE
Tinderry NR	Serrated Tussock - west of East Tinderry	Serrated Tussock		Containment	Foliar spray	C-NE
Tinderry NR	St Johns Wort	St Johns Wort		Containment	Foliar spray	C-NE
Tinderry NR	Sweet Briar - Donaldson's	Sweet Briar		Containment	Foliar spray	C-NE
Tinderry NR	Pig - general	Pig		Containment	Ground baiting, Trapping	M-CP
Tinderry NR	Mullein, Horehound	Mullein, Horehound		Containment	Foliar spray, Monitoring	L-PP
Tinderry NR	Serrated Tussock - E2	Serrated Tussock		Containment	Foliar spray	L-PP
Tinderry NR	Serrated Tussock - link E2 to East Tinderry	Serrated Tussock		Containment	Foliar spray	L-PP
Tinderry NR	Serrated Tussock - trails within main infestation	Serrated Tussock		Containment	Foliar spray	L-PP
Turallo NR	Pasture Grasses	Pasture Grasses	Natural Temperate Grasslands	Asset Protection	Monitoring	C-TSC
Turallo NR	Serrated Tussock, Chilean Needle Grass	Serrated Tussock, Chilean Needle Grass	Natural Temperate Grasslands	Asset Protection	Foliar spray	C-TSC
Turallo NR	St Johns Wort, Skeleton Weed	St Johns Wort, Skeleton Weed	Natural Temperate Grasslands	Asset Protection	Foliar spray	C-TSC
Turallo NR	Sweet Briar, Hawthorn	Sweet Briar, Hawthorn	Natural Temperate Grasslands	Asset Protection	Foliar spray	C-TSC

Queanbeyan Area Reserve	Site name	Target pest or weed	Asset at risk	Aim of control	Action	Priority
Turallo NR	Thistle, Patersons Curse	Thistle, Patersons Curse	Natural Temperate Grasslands	Asset Protection	Foliar spray	C-TSC
Wanna Wanna NR	Blackberry, Sweet Briar	Blackberry, Sweet Briar		Containment	Foliar spray	C-NE
Wanna Wanna NR	St Johns Wort	St Johns Wort		Containment	Foliar spray	C-NE
Wee Jasper NR	Goat, Deer, Rabbits - Wee Jasper Grevillea sites	Goat, Deer, Rabbit	Wee Jasper Grevillea	Asset Protection	Monitoring, Ground shooting	C-TSC
Wee Jasper NR	Blackberry - cave site	Blackberry	Eastern Bentwing-bat	Asset Protection	Cut and paint, Foliar spray	C-TSC
Wee Jasper NR	Brindabella/Wee Jasper Cooperative Wild Dog Plan	Wild dog/Fox	Sheep/ Cattle	Asset Protection	Trapping	C-EC
Wee Jasper NR	Blackberry, Sweet Briar	Blackberry, Sweet Briar		Containment	Foliar spray	L-PP
Wee Jasper NR	Patersons Curse, Thistle	Patersons Curse, Thistle		Containment	Foliar spray	L-PP
Wee Jasper NR	St Johns Wort	St Johns Wort		Containment	Foliar spray	L-PP
Yanununbeyan NP	Patersons Curse - Foxlow	Patersons Curse		Containment	Foliar spray	C-NE
Yanununbeyan NP	Patersons Curse, Thistle - general	Patersons Curse, Thistle		Containment	Foliar spray	C-NE
Yanununbeyan NP	Pine, Poplars - Foxlow Flat	Pine, Poplars		Containment	Physical/mechanical control	C-NE
Yanununbeyan NP	Serrated Tussock	Serrated Tussock		Containment	Foliar spray	C-NE
Yanununbeyan NP	Sweet Briar, Blackberry - Foxlow Ck	Sweet Briar, Blackberry		Containment	Foliar spray	C-NE
Yanununbeyan NR	Serrated Tussock	Serrated Tussock		Containment	Foliar spray	C-NE

Queanbeyan Area Reserve	Site name	Target pest or weed	Asset at risk	Aim of control	Action	Priority
Yanununbeyan SCA	Patersons Curse, Thistle - general	Patersons Curse, Thistle		Containment	Foliar spray	C-NE
Yanununbeyan SCA	Serrated Tussock - general	Serrated Tussock		Containment	Foliar spray	C-NE
Yanununbeyan SCA	Serrated Tussock - south of river	Serrated Tussock		Containment	Foliar spray	C-NE
Yanununbeyan SCA	St Johns Wort - north of Springs and trails	St Johns Wort		Containment	Foliar spray	C-NE
Yanununbeyan SCA	Sweet Briar, Blackberry - Woolcara & Tinderra Trails	Sweet Briar, Blackberry		Containment	Foliar spray	C-NE
Young NR	Thistle - Box-gum woodland	Thistle	Box-gum woodland	Asset Protection	Foliar spray, Physical/mechanical control	C-TSC
Young NR	Fox	Fox	Sheep	Asset Protection	Monitoring	M-CP

Riverina Highlands Area Reserve	Site name	Target pest or weed	Asset at risk	Aim of control	Action	Priority
Benambra NP	Rabbit - Box-gum Woodland	Rabbit	Box-gum woodland	Asset Protection	Habitat modification	C-TSC
Benambra NP	Patersons Curse - Box-gum woodland	Patersons Curse	Box-gum woodland	Asset Protection	Foliar spray	C-TSC
Benambra NP	St Johns Wort - Box-gum woodland	St Johns Wort	Box-gum woodland	Asset Protection	Foliar spray	C-TSC
Benambra NP	Tree of Heaven - Box-gum woodland	Tree of Heaven	Box-gum woodland	Asset Protection	Monitoring	C-TSC
Benambra NP	Patersons Curse - other	Patersons Curse		Containment	Foliar spray	C-NE
Benambra NP	St Johns Wort - other	St Johns Wort		Containment	Foliar spray	C-NE
Benambra NP	Fox	Fox	Sheep	Asset Protection	M44, Ground baiting	M-CP
Courabyra NR	Blackberry, St Johns Wort, Sweet Briar	Blackberry, St Johns Wort, Sweet Briar		Containment	Foliar spray	C-NE
Courabyra NR	Patersons Curse	Patersons Curse		Containment	Foliar spray	C-NE
Doodle Cooma Swamp	Patersons Curse, Noogoora Burr, Thistle	Patersons Curse, Noogoora Burr, Thistle	Box-gum Woodland	Asset Protection	Foliar spray	C-TSC
Doodle Cooma Swamp	Fox	Fox	Sheep	Asset Protection	M44	M-CP
Downfall NR	Weeds - Box-gum woodlands	Blackberry, St Johns Wort	Box-gum woodlands	Containment	Foliar spray, Splatter gun	C-TSC
Downfall NR	Weeds - Creeklines	Blackberry, St Johns Wort		Containment	Foliar spray	C-NE
Downfall NR	Pine	Pine		Containment	Physical/mechanical control	C-NE

Riverina Highlands Area Reserve	Site name	Target pest or weed	Asset at risk	Aim of control	Action	Priority
Kosciuszko NP	Blackberry - Corroboree Frog Monitoring Sites	Blackberry	Corroboree Frogs	Asset Protection	Foliar spray	C-TSC
Kosciuszko NP	Deer - subalpine plains	Deer	Montane Peatlands and Swamps, Discaria nitida, Thesium australe, Alpine tree frog, Broadtoothed Rat	Asset Protection	Ground shooting, Aerial shooting, Monitoring	C-TSC
Kosciuszko NP	Horses - subalpine plains	Horse	Montane Peatlands and Swamps, Discaria nitida, Thesium australe, Alpine tree frog, Broadtoothed Rat	Asset Protection	Trapping, Monitoring	C-TSC
Kosciuszko NP	Pig - subalpine plains	Pig	Montane Peatlands and Swamps, Discaria nitida, Thesium australe, Alpine tree frog, Broadtoothed Rat	Asset Protection	Aerial shooting, Trapping, Monitoring	C-TSC
Kosciuszko NP	Sweet briar, Blackberry - Discaria nitida	Sweet Briar, Blackberry	Discaria nitida	Asset Protection	Physical/mechanical control	C-TSC
Kosciuszko NP	European Wasp - recreational areas	European Wasp	Recreational areas	Asset Protection	Trapping, Habitat modification, Monitoring	C-HD
Kosciuszko NP	Horse - Snowy Mountains Hwy (Talbingo Ranger)	Horse	Snowy Mountains Hwy (Talbingo Ranger)	Asset Protection	Trapping, Monitoring	C-HD
Kosciuszko NP	Goobragandra Cooperative Wild Dog Control Plan	Wild dog/ Fox	Sheep/Cattle	Asset Protection	Trapping, Ground baiting, M44, Ground shooting	C-EC
Kosciuszko NP	Boraig - Goobragandra and Blowering Cooperative Wild Dog Plan	Wild dog	Sheep/Cattle	Asset Protection	Trapping, Ground baiting, M44, Monitoring	C-EC
Kosciuszko NP	Deer - Bogong/Goobragandra Wildernesses	Deer		Eradication	Monitoring, Ground shooting, Aerial baiting	C-NE

Riverina Highlands Area Reserve	Site name	Target pest or weed	Asset at risk	Aim of control	Action	Priority
Kosciuszko NP	Serrated Tussock - Blowering	Serrated Tussock		Eradication	Foliar spray, Monitoring	C-NE
Kosciuszko NP	Deer - Ravine	Deer		Containment	Ground shooting, Aerial shooting, Monitoring	C-NE
Kosciuszko NP	African Love Grass - Snowy Mountains Hwy	African Love Grass		Eradication	Foliar spray	C-NE
Kosciuszko NP	Broom - Talbingo Ranger	Broom		Eradication	Foliar spray, Physical/mechanical control	C-NE
Kosciuszko NP	Orange Hawkweed - Burns Creek Catchment	Orange Hawkweed		Eradication	Monitoring	C-NE
Kosciuszko NP	Ox-eye Daisy - subalpine plains	Ox-eye Daisy		Eradication	Monitoring	C-NE
Kosciuszko NP	Weeds - Kells Hut Precinct	St Johns Wort, Blackberry, Mullein, Sweet Briar, Thistle, Patersons Curse, Exotic Trees		Containment	Foliar spray, Cut and paint, Physical/mechanical control	H-CH
Kosciuszko NP	Weeds - The Hole	St Johns Wort, Blackberry, Mullein, Sweet Briar, Thistle, Patersons Curse, Exotic Trees		Containment	Foliar spray, Cut and paint, Physical/mechanical control	H-CH
Kosciuszko NP	Weeds - Venables Hut Precinct	St Johns Wort, Blackberry, Mullein, Sweet Briar, Thistle, Patersons Curse, Exotic Trees		Containment	Foliar spray, Cut and paint, Physical/mechanical control	H-CH
Kosciuszko NP	Weeds - Vickerys Precinct	St Johns Wort, Blackberry, Mullein, Sweet Briar, Thistle, Patersons Curse, Exotic Trees		Containment	Foliar spray, Cut and paint, Physical/mechanical control	H-CH
Kosciuszko NP	Rabbit - Kiandra infrastructure	Rabbit	Kiandra infrastructure	Asset Protection	Habitat modification, Ground baiting, Ground shooting, Monitoring	H-CH

Riverina Highlands Area Reserve	Site name	Target pest or weed	Asset at risk	Aim of control	Action	Priority
Kosciuszko NP	Rabbit - Yarrangobilly Village	Rabbit	Yarrangobilly Village	Asset Protection	Ground baiting, Ground shooting	H-CH
Kosciuszko NP	Weeds - Jounama Homestead	Blue Periwinkle, Sweet Briar, Elms, Pine, Hawthorn, Cotoneaster, Fruit Trees, Blackberry, St Johns Wort	Jounama Homestead	Asset Protection	Foliar spray, Cut and paint, Physical/mechanical control	H-CH
Kosciuszko NP	Pig (Bogong Ranger)	Pig		Containment	Ground baiting, Trapping, Aerial shooting, Ground shooting	C-NE
Kosciuszko NP	Exotic Trees - Blowering Foreshores	Exotic Trees, Willow, Privet		Containment	Cut and paint, Physical/mechanical control, Foliar spray	C-NE
Kosciuszko NP	Weeds - Transgrid - Blowering	St Johns Wort, Blackberry, Sweet Briar, Mullein, Fruit Trees		Containment	Foliar spray	C-NE
Kosciuszko NP	Weeds - Transgrid - North Yarrangobilly	St Johns Wort, Blackberry, Sweet Briar, Mullein, Vipers Bugloss, Yarrow, Lupin, Fruit Trees		Containment	Foliar spray	C-NE
Kosciuszko NP	Weeds - Bogong Peaks Wilderness	St Johns Wort, Mullein, Sweet Briar, Thistle, Vipers Bugloss, Pine, Fruit Trees, Hawthorn, Yarrow, Hemlock		Containment	Foliar spray, Cut and paint, Physical/mechanical control	C-NE
Kosciuszko NP	Weeds - Goobragandra Wilderness	St Johns Wort, Mullein, Sweet Briar, Thistle, Vipers Bugloss, Pine, Fruit Trees, Hawthorn, Yarrow, Hemlock		Containment	Foliar spray, Cut and paint, Physical/mechanical control	C-NE
Kosciuszko NP	Pig - Ravine	Pig		Containment	Aerial shooting, Trapping, Ground shooting, Monitoring	C-NE
Kosciuszko NP	Exotic Trees - Yarrangobilly Village Precinct	Hawthorn, Fruit Trees, Pine, Elms		Containment	Cut and paint, Foliar spray	C-NE

Riverina Highlands Area Reserve	Site name	Target pest or weed	Asset at risk	Aim of control	Action	Priority
Kosciuszko NP	Kiandra Precinct, Three Mile Dam, Tabletop FT (part)	Lupins, Yarrow, Ox-eye Daisy, Vipers Bugloss, Willow, St Johns Wort, Blackberry, Blue Periwinkle, Purple Top		Containment	Foliar spray	C-NE
Kosciuszko NP	Exotic Trees - Ravine	Poplars, Fruit Trees, False Acacia, Elms, Willow, Pine		Containment	Cut and paint, Foliar spray, Basal or stem injection	C-NE
Kosciuszko NP	Weeds - Browns FT, Honeysuckle FT	St Johns Wort, Blackberry, Mullein, Sweet Briar, Thistle, Vipers Bugloss, Pine, Fruit Trees, Hawthorn, Yarrow, Hemlock		Containment	Foliar spray	C-NE
Kosciuszko NP	Weeds - Buddong Falls, Talbingo Dam FT, Powerline Rd to Buddong Falls Rd	St Johns Wort, Blackberry, Mullein, Sweet Briar, Thistle, Vipers Bugloss, Pine, Fruit Trees, Hawthorn, Yarrow, Hemlock		Containment	Foliar spray	C-NE
Kosciuszko NP	Weeds - Cumberland FT, Lickhole FT, Middle Creek FT, Blue Creek FT (part)	St Johns Wort, Blackberry, Mullein, Sweet Briar, Thistle, Vipers Bugloss, Pine, Fruit Trees, Hawthorn, Yarrow, Hemlock		Containment	Foliar spray	C-NE
Kosciuszko NP	Weeds - Lobbs Hole - Ravine Rd, O'Hares FT	St Johns Wort, Blackberry, Mullein, Sweet Briar, Thistle, Vipers Bugloss, Pine, Fruit Trees, Hawthorn, Yarrow, Hemlock		Containment	Foliar spray	C-NE
Kosciuszko NP	Weeds - Wallaces Creek FT, Racecourse FT	St Johns Wort, Blackberry, Mullein, Sweet Briar, Thistle, Vipers Bugloss, Pine, Fruit Trees, Hawthorn, Yarrow, Hemlock		Containment	Foliar spray	C-NE

Riverina Highlands Area Reserve	Site name	Target pest or weed	Asset at risk	Aim of control	Action	Priority
Kosciuszko NP	Weeds - Yans Crossing FT, Coppermine FT, Blue Creek FT (part), Tollbar FT	St Johns Wort, Blackberry, Mullein, Sweet Briar, Thistle, Vipers Bugloss, Pine, Fruit Trees, Hawthorn, Yarrow, Hemlock		Containment	Foliar spray	C-NE
Kosciuszko NP	Weeds - Snowy Hydro Trails (including Talbingo Tower FT)	St Johns Wort, Blackberry, Sweet Briar, Mullein		Containment	Foliar spray	C-NE
Kosciuszko NP	Weeds - Transgrid - Buddong	St Johns Wort, Blackberry, Sweet Briar, Mullein		Containment	Foliar spray	C-NE
Kosciuszko NP	Weeds - Yarrangobilly Village Precinct	St Johns Wort, Blackberry, Sweet Briar, Mullein, Vipers Bugloss		Containment	Foliar spray, Physical/mechanical control	C-NE
Kosciuszko NP	Weeds - Yarrangobilly Caves Entry and Exit Roads	St Johns Wort, Blackberry, Sweet Briar, Mullein, Vipers Bugloss, Tutson		Containment	Foliar spray	C-NE
Kosciuszko NP	Weeds - Yarrangobilly Caves Precinct	St Johns Wort, Blackberry, Sweet Briar, Mullein, Vipers Bugloss, Tutson		Containment	Foliar spray	C-NE
Kosciuszko NP	Weeds - Snowy Mountains Hwy	St Johns Wort, Blackberry, Sweet Briar, Mullein, Vipers Bugloss, Yarrow		Containment	Foliar spray	C-NE
Kosciuszko NP	Weeds - Transgrid - North Yarrangobilly	St Johns Wort, Blackberry, Sweet Briar, Mullein, Vipers Bugloss, Yarrow, Lupin, Fruit Trees		Containment	Foliar spray	C-NE
Kosciuszko NP	Weeds - Transgrid - South Yarrangobilly	St Johns Wort, Blackberry, Sweet Briar, Mullein, Vipers Bugloss, Yarrow, Lupin, Fruit Trees		Containment	Foliar spray	C-NE

Riverina Highlands Area Reserve	Site name	Target pest or weed	Asset at risk	Aim of control	Action	Priority
Kosciuszko NP	Weeds - Elliot Way, Link Rd, KNP 5, Kings Cross Rd	St Johns Wort, Blackberry, Sweet Briar, Mullein, Vipers Bugloss, Yarrow, Lupin, Willow		Containment	Foliar spray	C-NE
Kosciuszko NP	Weeds - Essential Energy - Selwyn to Cabramurra	St Johns Wort, Blackberry, Vipers Bugloss		Containment	Foliar spray	C-NE
Kosciuszko NP	Willow - Kiandra Plain	Willow (General)		Containment	Cut and paint, Foliar spray	C-NE
Kosciuszko NP	Willow - Upper Tumut River Catchment	Willow (General)		Containment	Cut and paint, Foliar spray	C-NE
Kosciuszko NP	Deer - Yarrangobilly Karst Management Unit	Deer	Yarrangobilly Karst Management Unit	Asset Protection	Ground shooting, Aerial shooting, Monitoring	M-WNH
Kosciuszko NP	Horses - Yarrangobilly Karst Management Unit	Horse	Yarrangobilly Karst Management Unit	Asset Protection	Trapping, Monitoring	M-WNH
Kosciuszko NP	Pig - Yarrangobilly Karst Management Unit	Pig	Yarrangobilly Karst Management Unit	Asset Protection	Aerial shooting, Trapping, Monitoring	M-WNH
Kosciuszko NP	Deer - Yarrangobilly Karst Management Unit	Deer	Yarrangobilly Karst Management Unit	Asset Protection	Ground shooting, Aerial shooting, Monitoring	M-WNH
Kosciuszko NP	Horses - Yarrangobilly Karst Management Unit	Horse	Yarrangobilly Karst Management Unit	Asset Protection	Trapping, Monitoring	M-WNH
Kosciuszko NP	Pig - Yarrangobilly Karst Management Unit	Pig	Yarrangobilly Karst Management Unit	Asset Protection	Aerial shooting, Trapping, Monitoring	M-WNH
Kosciuszko NP	Rabbit - Blowering	Rabbit		Containment	Ground baiting, Habitat modification	M-RA
Kosciuszko NP	Weeds - Blowering Cliffs	St Johns Wort, Blackberry, Mullein, Sweet Briar, Thistle, Patersons Curse, Exotic Trees		Containment	Foliar spray, Cut and paint, Physical/mechanical control	M-RA

Riverina Highlands Area Reserve	Site name	Target pest or weed	Asset at risk	Aim of control	Action	Priority
Kosciuszko NP	Weeds - Camp Hudson	St Johns Wort, Blackberry, Mullein, Sweet Briar, Thistle, Patersons Curse, Exotic Trees		Containment	Foliar spray, Cut and paint, Physical/mechanical control	M-RA
Kosciuszko NP	Weeds - Humes Crossing	St Johns Wort, Blackberry, Mullein, Sweet Briar, Thistle, Patersons Curse, Exotic Trees		Containment	Foliar spray, Cut and paint, Physical/mechanical control	M-RA
Kosciuszko NP	Weeds - Rock Flat	St Johns Wort, Blackberry, Mullein, Sweet Briar, Thistle, Patersons Curse, Exotic Trees		Containment	Foliar spray, Cut and paint, Physical/mechanical control	M-RA
Kosciuszko NP	Weeds - Yachting Point	St Johns Wort, Blackberry, Mullein, Sweet Briar, Thistle, Patersons Curse, Exotic Trees		Containment	Foliar spray, Cut and paint, Physical/mechanical control	M-RA
Kosciuszko NP	Weeds - Yolde	St Johns Wort, Blackberry, Mullein, Sweet Briar, Thistle, Patersons Curse, Exotic Trees		Containment	Foliar spray, Cut and paint, Physical/mechanical control	M-RA
Kosciuszko NP	Weeds - The Pines Camping Area	St Johns Wort, Blackberry, Mullein, Sweet Briar, Thistle, Patersons Curse, Exotic Trees, Noogoora Burr		Containment	Foliar spray, Cut and paint, Physical/mechanical control	M-RA
Kosciuszko NP	Weeds - Log Bridge Creek	St Johns Wort, Blackberry, Mullein, Sweet Briar, Thistle, Patersons Curse, Exotic Trees, Willow, Noogoora Burr		Containment	Foliar spray, Cut and paint, Physical/mechanical control	M-RA
Kosciuszko NP	Rabbit - Kiandra recreational nodes	Rabbit	Kiandra recreational nodes	Asset Protection	Habitat modification, Ground baiting, Ground shooting, Monitoring	M-RA
Kosciuszko NP	Rabbit - Yarrangobilly Caves	Rabbit	Yarrangobilly Caves	Asset Protection	Ground baiting, Ground shooting	M-RA

Riverina Highlands Area Reserve	Site name	Target pest or weed	Asset at risk	Aim of control	Action	Priority
Kosciuszko NP	Weeds - Jounama Creek	Blackberry, St Johns Wort, Patersons Curse, Sweet Briar, Hawthorn, Pyracantha		Containment	Foliar spray	M-RA
Kosciuszko NP	Weeds - Ravine	St Johns Wort, Blackberry, Sweet Briar		Containment	Foliar spray	M-RA
Kosciuszko NP	Weeds - O'Hares Rest Area	St Johns Wort, Yarrow, Blackberry, Fruit Trees		Containment	Foliar spray	M-RA
Kosciuszko NP	Weeds - Transgrid - Blowering	St Johns Wort, Blackberry, Mullein, Sweet Briar, Thistle, Patersons Curse, Exotic Trees		Containment	Foliar spray, Cut and paint, Physical/mechanical control	M-CP
Kosciuszko NP	Weeds - Transgrid - Goobragandra	St Johns Wort, Blackberry, Mullein, Sweet Briar, Thistle, Patersons Curse, Exotic Trees		Containment	Foliar spray, Cut and paint, Physical/mechanical control	M-CP
Kosciuszko NP	Fox/ Dog - Cabramurra	Fox/ Wild dog	Cabramurra	Asset Protection	Ground shooting, Trapping	M-CP
Kosciuszko NP	Weeds - Blowering Foreshores	St Johns Wort, Blackberry, Mullein, Sweet Briar, Thistle, Patersons Curse		Containment	Foliar spray	L-PP
Kosciuszko NP	Rabbit - Kiandra general	Rabbit		Containment	Habitat modification, Ground baiting, Ground shooting, Monitoring	L-PP
Minjary NP	Dog/ Fox	Wild dog/ Fox	Sheep/ Cattle	Asset Protection	M44, Trapping, Monitoring	C-EC
Minjary NP	Deer	Deer		Eradication	Monitoring	C-NE
Minjary NP	Pig	Pig		Containment	Trapping, Monitoring	C-NE
Minjary NP	Blackberry	Blackberry		Containment	Foliar spray, Splatter gun	C-NE

Riverina Highlands Area Reserve	Site name	Target pest or weed	Asset at risk	Aim of control	Action	Priority
Minjary NP	Fig	Fig		Containment	Cut and paint	C-NE
Minjary NP	Patersons Curse	Patersons Curse		Containment	Foliar spray	C-NE
Minjary NP	St Johns Wort	St Johns Wort		Containment	Foliar spray	L-PP
Mudjarn NR	Patersons Curse, Thistle - McGruers Boundary	Patersons Curse, Thistle	Neighbours	Asset Protection	Foliar spray	M-CP
Mudjarn NR	Sweet Briar - eastern boundary -cleared	Sweet Briar	Neighbours	Asset Protection	Foliar spray	M-CP
Mullengandra NR	Patersons Curse, Thistle - Box-gum woodlands	Patersons Curse, Thistle	Box-gum woodland	Asset Protection	Foliar spray	C-TSC
Mullengandra NR	St Johns Wort - Box-gum woodlands	St Johns Wort	Box-gum woodland	Asset Protection	Foliar spray	C-TSC
Mullengandra NR	Hume Cooperative Wild Dog Plan	Wild dog/ Fox	Sheep/ Cattle	Asset Protection	Trapping, Ground baiting, M44	C-EC
Mullengandra NR	Goat/ Deer	Goat/ Deer		Eradication	Aerial shooting, Ground shooting	C-NE
Mullengandra NR	Patersons Curse, Thistle - General	Patersons Curse, Thistle		Containment	Foliar spray	C-NE
Mullengandra NR	St Johns Wort - General	St Johns Wort		Containment	Foliar spray	C-NE
Mullengandra NR	Pig	Pig		Containment	Ground baiting, Trapping, Ground shooting	M-CP
Mullengandra SCA	Patersons Curse, Thistle - Box-gum woodlands	Patersons Curse, Thistle	Box-gum woodland	Asset Protection	Foliar spray	C-TSC

Riverina Highlands Area Reserve	Site name	Target pest or weed	Asset at risk	Aim of control	Action	Priority
Mullengandra SCA	St Johns Wort - Box-gum woodlands	St Johns Wort	Box-gum woodland	Asset Protection	Foliar spray	C-TSC
Mullengandra SCA	Hume Cooperative Wild Dog Plan	Wild dog/ Fox	Sheep/ Cattle	Asset Protection	Trapping, Ground baiting, M44	C-EC
Mullengandra SCA	Goat/ Deer	Goat/ Deer		Eradication	Aerial shooting, Ground shooting	C-NE
Mullengandra SCA	Patersons Curse, Thistle - general	Patersons Curse, Thistle		Containment	Foliar spray	C-NE
Mullengandra SCA	St Johns Wort - general	St Johns Wort		Containment	Foliar spray	C-NE
Mullengandra SCA	Pig	Pig		Containment	Ground baiting, Trapping, Ground shooting	M-CP
Tabletop NR	Goat	Goat		Eradication	Aerial shooting, Ground shooting	C-NE
Tabletop NR	Fox	Fox	Sheep	Asset Protection	M44	M-CP
Tumblong SCA	Goat/ Deer	Goat/ Deer		Eradication	Aerial shooting, Ground shooting, Monitoring	C-NE
Tumblong SCA	Weeds - Fire Trails & sheep camps	Patersons Curse, Apple of Sodom, Thistle, St Johns Wort, Capeweed		Containment	Foliar spray	C-NE
Wereboldera SCA	East Gilmore Cooperative Wild Dog Plan	Wild dog/ Fox	Sheep/ Cattle	Asset Protection	Trapping, Ground baiting, Ground shooting	C-EC
Wereboldera SCA	Deer	Deer		Eradication	Monitoring, Ground shooting	C-NE
Wereboldera SCA	Pig - southern	Pig		Containment	Monitoring, Ground baiting	C-NE

Riverina Highlands Area Reserve	Site name	Target pest or weed	Asset at risk	Aim of control	Action	Priority
Wereboldera SCA	Blackberry	Blackberry		Containment	Foliar spray	C-NE
Wereboldera SCA	Privet, Exotic Trees	Privet, Exotic Trees		Containment	Cut and paint, Foliar spray, Physical/mechanical control	C-NE
Wereboldera SCA	Weeds - Fire Trails - General	St Johns Wort, Thistle, Patersons Curse		Containment	Foliar spray	C-NE
Wereboldera SCA	Tree of Heaven - Foleys Ck	Tree of Heaven		Containment	Foliar spray, Cut and paint	C-NE
Wiesners Swamp NR	Patersons Curse, Noogoora Burr, Thistle	Patersons Curse, Noogoora Burr, Thistle	Box-gum woodland & RAMSAR	Asset Protection	Foliar spray	C-TSC
Wiesners Swamp NR	Fox	Fox	Neighbours	Asset Protection	M44, Ground baiting	M-CP
Woomargama NP	Goat	Goat	Phantom Wattle, Small Snake Orchid	Containment	Aerial shooting, Ground shooting	C-TSC
Woomargama NP	Pig	Pig	Phantom Wattle, Small Snake Orchid	Containment	Ground baiting, Trapping, Ground shooting	C-TSC
Woomargama NP	Rabbit	Rabbit	Phantom Wattle, Small Snake Orchid	Containment	Ground baiting, Ground shooting	C-TSC
Woomargama NP	Patersons Curse, Thistle - Box-gum woodlands	Patersons Curse, Thistle	Box-gum woodland	Asset Protection	Foliar spray	C-TSC
Woomargama NP	St Johns Wort, Blackberry - Box-gum woodlands	St Johns Wort, Blackberry	Box-gum woodland	Asset Protection	Foliar spray	C-TSC
Woomargama NP	Hume Cooperative Wild Dog Plan	Wild dog/ Fox	Sheep/ Cattle	Asset Protection	Trapping, Ground baiting, M44	C-EC
Woomargama NP	Goat/ deer	Goat/ deer		Eradication	Aerial shooting, Ground shooting	C-NE

Riverina Highlands Area Reserve	Site name	Target pest or weed	Asset at risk	Aim of control	Action	Priority
Woomargama NP	Patersons Curse, Thistle - general	Patersons Curse, Thistle		Containment	Foliar spray	C-NE
Woomargama NP	Poplars, Tree of Heaven - Home Flat	Poplars, Tree of Heaven		Containment	Cut and paint, Foliar spray	C-NE
Woomargama NP	St Johns Wort, Blackberry - general	St Johns Wort, Blackberry		Containment	Foliar spray	C-NE
Woomargama NP	Pig	Pig		Containment	Ground baiting, Trapping, Ground shooting	M-CP
Woomargama SCA	Patersons Curse, Thistle - Box-gum woodlands	Patersons Curse, Thistle	Box-gum woodland	Asset Protection	Foliar spray	C-TSC
Woomargama SCA	St Johns Wort, Blackberry - Box-gum woodlands	St Johns Wort, Blackberry	Box-gum woodland	Asset Protection	Foliar spray	C-TSC
Woomargama SCA	Hume Cooperative Wild Dog Plan	Wild dog/ Fox	Sheep/ Cattle	Asset Protection	Trapping, Ground baiting, M44	C-EC
Woomargama SCA	Goat/ deer	Goat/ deer		Eradication	Aerial shooting, Ground shooting	C-NE
Woomargama SCA	Patersons Curse, Thistle - general	Patersons Curse, Thistle		Containment	Foliar spray	C-NE
Woomargama SCA	St Johns Wort, Blackberry - general	St Johns Wort, Blackberry		Containment	Foliar spray	C-NE
Woomargama SCA	Pig	Pig		Containment	Ground baiting, Trapping, Ground shooting	M-CP

Snowy River Area Reserve	Site name	Target pest or weed	Asset at risk	Aim of control	Action	Priority
Bobundara NR	Horehound	Horehound	Tablelands Snow-gum	Asset Protection	Foliar spray	C-TSC
Bobundara NR	Paterson's Curse	Paterson's Curse	Tablelands Snow-gum	Asset Protection	Foliar spray	C-TSC
Bobundara NR	Serrated Tussock	Serrated Tussock	Tablelands Snow-gum	Asset Protection	Foliar spray	C-TSC
Coornartha NR	African Love grass	African Love grass		Containment	Foliar spray	C-NE
Coornartha NR	Serrated Tussock	Serrated Tussock		Containment	Foliar spray	C-NE
Coornartha NR	St Johns Wort	St Johns Wort		Containment	Foliar spray	C-NE
Coornartha NR	Pig/ Goat	Pig/ Goat		Containment	Ground shooting, Trapping	M-CP
Dangelong NR	Wadbilliga Cooperative Wild Dog and Fox Control Plan 2003-04	Wild dog/ Fox	Sheep/ Cattle	Asset Protection	Ground baiting, Trapping, M44	C-EC
Dangelong NR	Goat	Goat		Containment	Ground shooting	C-NE
Dangelong NR	Pig	Pig		Containment	Trapping, Ground shooting, Ground baiting	M-CP
Dangelong NR	Serrated Tussock	Serrated Tussock		Containment	Foliar spray	M-CP
Ironmungy NR	Serrated Tussock	Serrated Tussock		Containment	Foliar spray	C-EC
Ironmungy NR	Goat/ Sheep	Goat/ Sheep		Containment	Ground shooting	C-NE
Ironmungy NR	Fox	Fox	Sheep	Asset Protection	Ground baiting	M-CP

Snowy River Area Reserve	Site name	Target pest or weed	Asset at risk	Aim of control	Action	Priority
Kosciuszko NP	Goat, Deer, Horses - Suggan Buggan Mallee	Goat/ Deer/ Horse	Suggan Buggan Mallee	Asset Protection	Monitoring	C-TSC
Kosciuszko NP	Cat - Thredbo	Cat	Broad-toothed rat, Mountain pygmy possum	Asset Protection	Trapping, Monitoring	C-TSC
Kosciuszko NP	FoxTAP - Broad-toothed Rat	Fox	Broad-toothed Rat	Asset Protection	Ground baiting	C-TSC
Kosciuszko NP	Horse/ Deer - Montane Peatlands and Swamps	Horse/ Deer	Montane Peatlands and Swamps	Asset Protection	Trapping, Aerial shooting, Ground shooting	C-TSC
Kosciuszko NP	Horse/ Deer/ Pig - Anemone Buttercup	Horse/ Deer/ Pig	Anemone Buttercup	Asset Protection	Monitoring	C-TSC
Kosciuszko NP	Horse/ Deer/ Pig - Broad-toothed Rat	Horse/ Deer/ Pig	Broad-toothed Rat	Asset Protection	Monitoring	C-TSC
Kosciuszko NP	Horse/ Deer/ Pig - Pale Pomaderris	Horse/ Deer/ Pig	Pale Pomaderris	Asset Protection	Monitoring	C-TSC
Kosciuszko NP	Horse/ Deer/ Pig - Shining Cudweed	Horse/ Deer/ Pig	Shining Cudweed	Asset Protection	Monitoring	C-TSC
Kosciuszko NP	Horse - Pilot Ranger	Horse	Alpine Tree Frog, Broad-toothed Rat, Leafy Anchor Plant, Montane Peatlands and Swamps, Pale Pomaderris, Shining Cudweed, Southern Corroboree Frog	Asset Protection	Trapping	C-TSC
Kosciuszko NP	Horse/ Deer/ Pig - Alpine Tree Frog	Horse/ Deer/ Pig	Alpine Tree Frog	Asset Protection	Monitoring, Fencing	C-TSC

Snowy River Area Reserve	Site name	Target pest or weed	Asset at risk	Aim of control	Action	Priority
Kosciuszko NP	Horse/ Deer/ Pig - Broad-toothed Rat	Horse/ Deer/ Pig	Broad-toothed Rat	Asset Protection	Monitoring	C-TSC
Kosciuszko NP	Horse/ Deer/ Pig - Leafy Anchor Plant	Horse/ Deer/ Pig	Leafy Anchor Plant	Asset Protection	Monitoring	C-TSC
Kosciuszko NP	Horse/ Deer/ Pig - Montane Peatlands and Swamps	Horse/ Deer/ Pig	Montane Peatlands and Swamps	Asset Protection	Trapping, Aerial shooting, Fencing	C-TSC
Kosciuszko NP	Horse/ Deer/ Pig - Pale Pomaderris	Horse/ Deer/ Pig	Pale Pomaderris	Asset Protection	Monitoring	C-TSC
Kosciuszko NP	Horse/ Deer/ Pig - Shining Cudweed	Horse/ Deer/ Pig	Shining Cudweed	Asset Protection	Monitoring	C-TSC
Kosciuszko NP	Horse/ Deer/ Pig - Southern Corroboree Frog	Horse/ Deer/ Pig	Southern Corroboree Frog	Asset Protection	Monitoring, Fencing	C-TSC
Kosciuszko NP	Cooperative Wild Dog/ Fox Plan Dalgetty-Paupong Areas	Wild dog/ Fox	Sheep/ Cattle	Asset Protection	Ground baiting, Trapping, Aerial baiting, M44	C-EC
Kosciuszko NP	Cooperative Wild Dog/ Fox Plan Corrowong/Tombong/Merriangah Areas Byadbo Wilderness Area - Kosciuszko NP	Wild dog/ Fox	Sheep/ Cattle	Asset Protection	Ground baiting, Trapping, Aerial baiting, M44	C-EC
Kosciuszko NP	Cooperative Wild Dog/ Fox Plan Thredbo & Ingebyra Areas	Wild dog/ Fox	Sheep/ Cattle	Asset Protection	Ground baiting, Trapping, Aerial baiting, M44	C-EC
Kosciuszko NP	Goat/ Deer - Byadbo Ranger	Goat/ Deer		Containment	Aerial shooting, Ground shooting	C-NE
Kosciuszko NP	Serrated Tussock - Biddi	Serrated Tussock		Containment	Foliar spray	C-NE
Kosciuszko NP	Serrated Tussock - Jacobs River	Serrated Tussock		Containment	Foliar spray	C-NE

Snowy River Area Reserve	Site name	Target pest or weed	Asset at risk	Aim of control	Action	Priority
Kosciuszko NP	Serrated Tussock - Merambego	Serrated Tussock		Containment	Foliar spray	C-NE
Kosciuszko NP	Serrated Tussock - Pinch Helipad	Serrated Tussock		Containment	Foliar spray	C-NE
Kosciuszko NP	Serrated Tussock - Running Waters	Serrated Tussock/ African Lovegrass		Containment	Foliar spray	C-NE
Kosciuszko NP	Broom - Thredbo Valley	Broom		Eradication	Foliar spray, Cut and paint, Physical/mechanical control	C-NE
Kosciuszko NP	Orange Hawkweed/ Fireweed	Orange Hawkweed/ Fireweed		Eradication	Monitoring	C-NE
Kosciuszko NP	Horse - Merambego	Horse		Containment	Trapping	C-NE
Kosciuszko NP	Poplars - Snowy River	Poplars		Containment	Cut and paint, Foliar spray, Physical/mechanical control	C-NE
Kosciuszko NP	St Johns Wort - Byadbo Fire Trails	St Johns Wort		Containment	Foliar spray	C-NE
Kosciuszko NP	Horse - Ramshead	Horse		Containment	Monitoring	C-NE
Kosciuszko NP	Pig - Crackenback Ranger	Pig		Containment	Ground baiting, Trapping, Aerial shooting, Monitoring	C-NE
Kosciuszko NP	African Love Grass - Alpine Way	African Love Grass		Containment	Foliar spray	C-NE
Kosciuszko NP	Hawthorn - Bullocks Hut	Hawthorn		Containment	Cut and paint	C-NE
Kosciuszko NP	Raspberries - Thredbo Valley Track	Raspberries		Containment	Foliar spray	C-NE
Kosciuszko NP	Teasel - Park entrance	Teasel		Containment	Foliar spray	C-NE

Snowy River Area Reserve	Site name	Target pest or weed	Asset at risk	Aim of control	Action	Priority
Kosciuszko NP	Willow - Alpine Way Roadside	Willow		Containment	Foliar spray, Cut and paint	C-NE
Kosciuszko NP	Willow - Thedbo Valley	Willow		Containment	Foliar spray, Cut and paint	C-NE
Kosciuszko NP	Deer - Pilot Ranger	Deer		Containment	Aerial shooting, Ground shooting, Monitoring	C-NE
Kosciuszko NP	Pig - Pilot Ranger	Pig		Containment	Ground baiting, Trapping, Aerial shooting	C-NE
Kosciuszko NP	Blackberry - Cascade Fire Trail	Blackberry		Containment	Foliar spray	C-NE
Kosciuszko NP	Blackberry - Cowombat Flat	Blackberry		Containment	Foliar spray	C-NE
Kosciuszko NP	Milfoil - Carters Hut	Milfoil		Containment	Foliar spray	C-NE
Kosciuszko NP	St Johns Wort - Cascade Fire Trail	St Johns Wort		Containment	Foliar spray	C-NE
Kosciuszko NP	St Johns Wort - Charcoal Range Fire Trail	St Johns Wort		Containment	Foliar spray	C-NE
Kosciuszko NP	St Johns Wort - Pilot Fire Trail	St Johns Wort		Containment	Foliar spray	C-NE
Kosciuszko NP	St Johns Wort - Tin Mine Fire Trail	St Johns Wort		Containment	Foliar spray	C-NE
Kosciuszko NP	Pig - Byadbo Ranger	Pig		Containment	Trapping, Ground shooting, Aerial shooting, Ground baiting	M-WNH
Kosciuszko NP	Paterson's Curse, etc - Merambego	Paterson's Curse/ Vipers Bugloss/ Horehound		Containment	Foliar spray	M-WNH
Kosciuszko NP	St Johns Wort - Jacobs River Bridge	St Johns Wort		Containment	Foliar spray	M-WNH

Snowy River Area Reserve	Site name	Target pest or weed	Asset at risk	Aim of control	Action	Priority
Kosciuszko NP	St Johns Wort - Running Waters	St Johns Wort		Containment	Foliar spray	M-WNH
Kosciuszko NP	St Johns Wort - The Pinch	St Johns Wort		Containment	Foliar spray	M-WNH
Kosciuszko NP	Thistle - Merambego	Thistle		Containment	Foliar spray	M-WNH
Kosciuszko NP	Willow - Snowy River	Willow		Containment	Cut and paint, Foliar spray, Physical/mechanical control	M-WNH
Kosciuszko NP	Milfoil, Vipers Bugloss, etc - Alpine Way	Vipers Bugloss/ Milfoil/ Great Mullein/ Thistle/ St Johns Wort/ Blackberry		Containment	Foliar spray	M-WNH
Kosciuszko NP	Blackberry - Pilot Lookout	Blackberry		Containment	Foliar spray	M-WNH
Kosciuszko NP	Blackberry - Lower Snowy	Blackberry		Containment	Foliar spray	M-RA
Kosciuszko NP	Paterson's Curse, etc - Jacobs River Camping Area	Paterson's Curse/ Vipers Bugloss		Containment	Foliar spray	M-RA
Kosciuszko NP	Paterson's Curse, etc - Pinch Camping Area	Paterson's Curse/ Vipers Bugloss/ Horehound		Containment	Foliar spray, Physical/mechanical control	M-RA
Kosciuszko NP	St Johns Wort - Lower Snowy Visitor Areas	St Johns Wort		Containment	Foliar spray	M-RA
Kosciuszko NP	Rabbit - Bullocks Flat/ Thredbo Diggings	Rabbit		Containment	Ground baiting, Ground shooting, Habitat modification	M-RA
Kosciuszko NP	Milfoil, Vipers Bugloss, etc - Thredbo River Walk	Milfoil/ Thistle/ Goats Beard/ Vipers Bugloss/ Blackberry		Containment	Foliar spray	M-RA
Kosciuszko NP	St Johns Wort - Bullocks Flat	St Johns Wort		Containment	Foliar spray	M-RA
Kosciuszko NP	St Johns Wort - Little Thredbo	St Johns Wort		Containment	Foliar spray	M-RA

Snowy River Area Reserve	Site name	Target pest or weed	Asset at risk	Aim of control	Action	Priority
Kosciuszko NP	St Johns Wort - Ngarigo	St Johns Wort		Containment	Foliar spray	M-RA
Kosciuszko NP	St Johns Wort - Thredbo Diggings	St Johns Wort		Containment	Foliar spray	M-RA
Kosciuszko NP	St Johns Wort - Thredbo Ranger Station	St Johns Wort		Containment	Foliar spray	M-RA
Kosciuszko NP	Blackberry - Leatherbarrel Creek	Blackberry		Containment	Foliar spray	M-RA
Kuma NR	African Love grass	African Love grass	Natural Temperate Grasslands	Asset Protection	Foliar spray	C-TSC
Kuma NR	Paterson's Curse/ Great Mullein	Paterson's Curse/ Great Mullein	Natural Temperate Grasslands	Asset Protection	Physical/mechanical control	C-TSC
Kuma NR	Serrated Tussock	Serrated Tussock	Natural Temperate Grasslands	Asset Protection	Foliar spray	C-TSC
Kuma NR	St Johns Wort	St Johns Wort	Natural Temperate Grasslands	Asset Protection	Foliar spray	C-TSC
Kybeyan SCA - Dangelong NR	Wadbilliga Cooperative Wild Dog and Fox Control Plan 2003-04	Wild dog/ Fox	Sheep/ Cattle	Asset Protection	Ground baiting, Trapping, M44	C-EC
Kybeyan SCA - Dangelong NR	Goat	Goat		Containment	Ground shooting	C-NE
Kybeyan SCA - Dangelong NR	St Johns Wort	St Johns Wort		Containment	Foliar spray	C-NE
Kybeyan SCA - Dangelong NR	Vipers Bugloss - Miralles boundary	Vipers Bugloss		Containment	Foliar spray, Physical/mechanical control	C-NE

Snowy River Area Reserve	Site name	Target pest or weed	Asset at risk	Aim of control	Action	Priority
Kybeyan SCA - Dangelong NR	Pig	Pig		Containment	Trapping, Ground shooting, Ground baiting	M-CP
Kybeyan SCA - Dangelong NR	Serrated Tussock	Serrated Tussock		Containment	Foliar spray	M-CP
Meringo NR	St Johns Wort	St Johns Wort		Containment	Foliar spray	C-NE
Meringo NR	Serrated Tussock	Serrated Tussock		Containment	Foliar spray	L-LP
Merriangaah NR	Cooperative Wild Dog/ Fox Plan Corrowong/Tombong/Merriangaah Areas Byadbo Wilderness Area - Kosciuszko NP	Wild dog/ Fox	Sheep/ Cattle	Asset Protection	Aerial baiting, Ground baiting, Trapping, Monitoring	C-EC
Merriangaah NR	Serrated Tussock	Serrated Tussock		Containment	Foliar spray	C-EC
Merriangaah NR	Goat/ Deer/ Pigs	Goat/ Deer/ Pigs		Containment	Aerial shooting, Ground shooting	C-NE
Mount Clifford NR	Serrated Tussock	Serrated Tussock	Tablelands Snow-gum	Asset Protection	Foliar spray	C-TSC
Myalla NR	Serrated Tussock	Serrated Tussock	Tablelands Snow-gum	Asset Protection	Foliar spray	C-TSC
Ngadang NR	Goat/ Deer	Goat/ Deer	Tablelands Snow-gum	Asset Protection	Ground shooting	C-TSC
Ngadang NR	African Love Grass	African Love Grass	Tablelands Snow-gum	Asset Protection	Monitoring	C-TSC
Ngadang NR	Serrated Tussock	Serrated Tussock	Tablelands Snow-gum	Asset Protection	Foliar spray	C-TSC
Ngadang NR	St Johns Wort	St Johns Wort	Tablelands Snow-gum	Asset Protection	Foliar spray	C-TSC

Snowy River Area Reserve	Site name	Target pest or weed	Asset at risk	Aim of control	Action	Priority
Numeralla NR	Pig	Pig	Tablelands Snow-gum	Asset Protection	Trapping	C-TSC
Paupong NR	Paterson's Curse/ Vipers Bugloss	Paterson's Curse/ Vipers Bugloss	Tablelands Snow-gum	Asset Protection	Foliar spray	C-TSC
Paupong NR	Cooperative Wild Dog/ Fox Plan Dalgetty-Paupong Areas	Wild Dog/ Fox	Sheep/ Cattle	Asset Protection	Ground baiting, Trapping, Aerial baiting, M44	C-EC
Quidong NR	Cooperative Wild Dog/ Fox Plan Corrowong/Tombong/Merriangah Areas Byadbo Wilderness Area - Kosciuszko NP	Wild Dog/ Fox	Sheep/ Cattle	Asset Protection	Aerial baiting, Ground baiting, Trapping	C-EC
Quidong NR	Goat/ Deer	Goat/ Deer		Containment	Aerial shooting, Ground shooting	C-NE
Quidong NR	Willows	Willows		Containment	Cut and paint, Foliar spray, Physical/mechanical control	M-CP
Undoo NR	Serrated Tussock/ African Love grass	Serrated Tussock/ African Love grass	Tablelands Snow-gum	Asset Protection	Foliar spray	C-TSC
Undoo NR	St Johns Wort	St Johns Wort	Tablelands Snow-gum	Asset Protection	Foliar spray	C-TSC
Wullwey NR	Fox	Fox	Tablelands Snow-gum	Asset Protection	Ground baiting	C-TSC
Wullwey NR	Serrated Tussock	Serrated Tussock	Tablelands Snow-gum	Asset Protection	Foliar spray	C-TSC

Upper Murray Area Reserve	Site name	Target pest or weed	Asset at risk	Aim of control	Action	Priority
Bogandyera NR	Upper Murray Cooperative Dog Program	Wild dog/ Fox	Sheep/ Cattle	Asset Protection	Trapping, Ground baiting, Ground shooting	C-EC
Bogandyera NR	Goat/ Deer	Goat/ Deer		Containment	Aerial shooting, Ground shooting	C-NE
Bogandyera NR	Blackberry	Blackberry		Containment	Foliar spray, Splatter gun	C-NE
Bogandyera NR	Pine	Pine		Containment	Physical/mechanical control, Cut and paint	C-NE
Bogandyera NR	Willow - Mannus Creek	Willow		Containment	Foliar spray, Cut and paint	C-NE
Bogandyera NR	Willow - Sapling Yard Creek	Willow		Containment	Foliar spray, Cut and paint	C-NE
Bogandyera NR	Pig	Pig	Neighbours	Asset Protection	Trapping, Ground baiting, Ground shooting	M-CP
Clarkes Hill NR	Upper Murray Cooperative Dog Plan	Wild dog/ Fox	Sheep/ Cattle	Asset Protection	Trapping, Ground baiting, Ground shooting	C-EC
Clarkes Hill NR	Paterson's Curse	Paterson's Curse		Containment	Foliar spray	C-NE
Clarkes Hill NR	Pig	Pig	Neighbours	Asset Protection	Trapping, Ground baiting, Ground shooting	M-CP
Clarkes Hill NR	Rabbit	Rabbit		Containment	Ground shooting, Ground baiting, Habitat modification	L-PP
Clarkes Hill NR	Blackberry	Blackberry		Containment	Foliar spray, Splatter gun, Physical/mechanical control	L-PP
Jingellic NR	Upper Murray Cooperative Dog Plan	Wild dog/ Fox	Sheep/ Cattle	Asset Protection	Trapping, Ground baiting, Ground shooting	C-EC

Upper Murray Area Reserve	Site name	Target pest or weed	Asset at risk	Aim of control	Action	Priority
Jingellic NR	Paterson's Curse	Paterson's Curse		Containment	Foliar spray	C-NE
Jingellic NR	Tree of Heaven	Tree of Heaven		Containment	Cut and paint, Foliar spray, Physical/mechanical control	C-NE
Jingellic NR	Willow	Willow		Containment	Cut and paint, Foliar spray, Physical/mechanical control	C-NE
Jingellic NR	Pig	Pig	Neighbours	Asset Protection	Trapping, Ground baiting, Ground shooting	M-CP
Kosciuszko NP	Horses - 15 Mile Ridge/Emu Plain	Horse	Mountain Peatlands, Southern Corroboree Frogs	Asset Protection	Trapping	C-TSC
Kosciuszko NP	Horses - Yellow Bog	Horse	Mountain Peatlands, Southern Corroboree Frogs	Asset Protection	Trapping	C-TSC
Kosciuszko NP	Weeds - Burkes Gorge	St Johns Wort, Blackberry, Willows, Great Mullein, Vipers Bugloss	Spotted Tree Frog	Asset Protection	Foliar spray, Cut and paint, Physical/mechanical control	C-TSC
Kosciuszko NP	European Wasp - Khancoban	European Wasp	Recreational Areas	Asset Protection	Ground baiting, Habitat modification	C-HD
Kosciuszko NP	Horses - Tom Groggin	Horse	Alpine Way	Asset Protection	Trapping	C-HD
Kosciuszko NP	Upper Murray Cooperative Dog Plan	Wild dog	Sheep/ Cattle	Asset Protection	Trapping, Ground baiting	C-EC
Kosciuszko NP	Deer - Subalpine	Deer		Eradication	Ground shooting, Aerial shooting	C-NE
Kosciuszko NP	African Love Grass - Alpine Way	African Love Grass		Eradication	Foliar spray	C-NE
Kosciuszko NP	Broom - UM Jagungal Ranger	Broom		Eradication	Foliar spray	C-NE

Upper Murray Area Reserve	Site name	Target pest or weed	Asset at risk	Aim of control	Action	Priority
Kosciuszko NP	Orange Hawkweed	Orange Hawkweed		Eradication	Foliar spray, Monitoring, Physical/mechanical control	C-NE
Kosciuszko NP	Rabbits - Geehi	Rabbit	Geehi	Asset Protection	Ground baiting, Habitat modification	H-CH
Kosciuszko NP	Weeds - Transgrid	Blackberry, St Johns Wort		Containment	Foliar spray, Cut and paint, Physical/mechanical control	C-NE
Kosciuszko NP	Weeds - Rileys Flat	Blackberry, Sweet Briar, Patersons Curse		Containment	Foliar spray, Cut and paint, Physical/mechanical control	C-NE
Kosciuszko NP	Prickly Pear - Spring Creek	Prickly Pear		Containment	Foliar spray, Physical/mechanical control, Biological control, Monitoring	C-NE
Kosciuszko NP	Weeds - Major Clews	St Johns Wort, Blackberry, Broom, Exotic Trees		Containment	Foliar spray, Cut and paint, Physical/mechanical control	C-NE
Kosciuszko NP	Weeds - Behrs Flat	St Johns Wort, Blackberry, Great Mullein, Exotic Trees		Containment	Foliar spray, Cut and paint, Physical/mechanical control	C-NE
Kosciuszko NP	Weeds - Round Flat	St Johns Wort, Blackberry, Milfoil		Containment	Foliar spray, Cut and paint, Physical/mechanical control	C-NE
Kosciuszko NP	Weeds - Grassy Flat	St Johns Wort, Blackberry, Sweet Briar, Thistle		Containment	Foliar spray, Cut and paint, Physical/mechanical control	C-NE
Kosciuszko NP	Weeds - Murray Gates	St Johns Wort, Blackberry, Sweet Briar, Thistle		Containment	Foliar spray, Cut and paint, Physical/mechanical control	C-NE
Kosciuszko NP	Weeds - Tom Groggin	St Johns Wort, Blackberry, Willows, Great Mullein, Patersons Curse, Periwinkle		Containment	Foliar spray, Cut and paint, Physical/mechanical control	C-NE
Kosciuszko NP	Weeds - Youngal	St Johns Wort, Great Mullein, Thistle, Exotic Trees		Containment	Foliar spray, Cut and paint, Physical/mechanical control	C-NE

Upper Murray Area Reserve	Site name	Target pest or weed	Asset at risk	Aim of control	Action	Priority
Kosciuszko NP	Willow - Dodgers Creek	Willow		Containment	Foliar spray, Cut and paint, Physical/mechanical control	C-NE
Kosciuszko NP	Willow - Geehi River	Willow		Containment	Foliar spray, Cut and paint, Physical/mechanical control	C-NE
Kosciuszko NP	Willow - Ogilvies	Willow		Containment	Foliar spray, Cut and paint, Physical/mechanical control	C-NE
Kosciuszko NP	Willow - Tooma River	Willow		Containment	Foliar spray, Cut and paint, Physical/mechanical control	C-NE
Kosciuszko NP	Pigs - Jagungal	Pig		Containment	Aerial shooting, Trapping, Ground baiting, Monitoring	C-NE
Kosciuszko NP	Weeds - Belavista	Blackberry, Great Mullein, Broom, Exotic Trees		Containment	Foliar spray, Cut and paint, Physical/mechanical control	C-NE
Kosciuszko NP	Weeds - Tumbling Waters	Blackberry, Willows		Containment	Foliar spray, Cut and paint, Physical/mechanical control	C-NE
Kosciuszko NP	Ox-eye Daisy - Happy Jacks	Ox-eye Daisy		Containment	Foliar spray	C-NE
Kosciuszko NP	Potentilla - Round Mountain Hut, Ogilvies, 15 Mile Ridge, Happy Jacks, Farbald,	Potentilla		Containment	Foliar spray	C-NE
Kosciuszko NP	Weeds - Fire Trails	St Johns Wort, Blackberry, Vipers Bugloss, Great Mullein, Exotic Trees, Milfoil		Containment	Foliar spray, Cut and paint, Physical/mechanical control	C-NE
Kosciuszko NP	Weeds - Olsens Lookout	St Johns Wort, Blackberry, Willows		Containment	Foliar spray, Cut and paint, Physical/mechanical control	C-NE

Upper Murray Area Reserve	Site name	Target pest or weed	Asset at risk	Aim of control	Action	Priority
Kosciuszko NP	Weeds - Geehi Dam	St Johns Wort, Blackberry, Willows, Great Mullein, Broom, Exotic Trees		Containment	Foliar spray, Cut and paint, Physical/mechanical control	C-NE
Kosciuszko NP	Weeds - Geehi	Willow, Broom, Blackberry, Patersons Curse		Containment	Foliar spray, Cut and paint, Physical/mechanical control	C-NE
Kosciuszko NP	Exotic Trees - Khancoban Back Creek	Willows, Tree of Heaven		Containment	Foliar spray, Cut and paint, Physical/mechanical control	C-NE
Kosciuszko NP	Rabbits - Tom Groggin	Rabbit	Tom Groggin	Asset Protection	Ground baiting, Habitat modification	M-RA
Kosciuszko NP	Weeds - Scammels	St Johns Wort, Blackberry	Scammels	Asset Protection	Foliar spray	M-RA
Kosciuszko NP	Weeds - Geehi Township	St Johns Wort, Blackberry, Broom, Exotic Trees	Geehi Township	Asset Protection	Foliar spray, Cut and paint, Physical/mechanical control	M-RA
Kosciuszko NP	Weeds - Alpine Way	St Johns Wort, Blackberry, Willows, Great Mullein, Patersons Curse	Alpine Way	Asset Protection	Foliar spray, Cut and paint, Physical/mechanical control	M-RA
Kosciuszko NP	Weeds - Alpine Way Precinct	St Johns Wort, Blackberry, Willows, Great Mullein, Patersons Curse	Alpine Way Precinct	Asset Protection	Foliar spray, Cut and paint, Physical/mechanical control	M-RA
Kosciuszko NP	Weeds - Geehi	St Johns Wort, Great Mullein, Fleabane	Geehi	Asset Protection	Foliar spray	M-RA
Kosciuszko NP	Pigs - Neighbours (Jagungal Ranger)	Pig	Neighbours	Asset Protection	Trapping, Ground baiting	M-CP
Kosciuszko NP	Weeds - Snowy Hydro Cooperative Roads	St Johns Wort, Blackberry, Vipers Bugloss, Great Mullein, Exotic Trees		Containment	Foliar spray, Cut and paint, Physical/mechanical control	M-CP

Upper Murray Area Reserve	Site name	Target pest or weed	Asset at risk	Aim of control	Action	Priority
Kosciuszko NP	Blackberry, Willows - Murray River	Blackberry, Willows		Containment	Monitoring, Cut and paint	L-LP
Kosciuszko NP	Weeds - Khancoban Back Creek	St Johns Wort, Blackberry, Willows, Great Mullein, Tree of Heaven, Patersons Curse	Khancoban Back Creek	Asset Protection	Foliar spray, Cut and paint, Physical/mechanical control	L-PP

Visitor and Business Services Section - Reserve	Site name	Target pest or weed	Asset at risk	Aim of control	Action	Priority
Kosciuszko NP	Cat - Blue Cow	Cat	Mountain Pygmy Possum, Broad-toothed Rat	Asset Protection	Trapping	C-TSC
Kosciuszko NP	Cat - Charlotte Pass	Cat	Mountain Pygmy Possum, Broad-toothed Rat	Asset Protection	Trapping	C-TSC
Kosciuszko NP	Cat - Perisher Village	Cat	Mountain Pygmy Possum, Broad-toothed Rat	Asset Protection	Trapping	C-TSC
Kosciuszko NP	Cat - Thredbo Village	Cat	Broad-toothed Rat	Asset Protection	Trapping	C-TSC
Kosciuszko NP	Fox - Blue Cow	Fox	Mountain Pygmy Possum, Broad-toothed Rat	Asset Protection	Trapping, Ground baiting, M44	C-TSC
Kosciuszko NP	Fox - Charlotte Pass	Fox	Mountain Pygmy Possum, Broad-toothed Rat	Asset Protection	Trapping, Ground baiting, M44	C-TSC
Kosciuszko NP	Fox - Thredbo Village	Fox	Broad-toothed Rat	Asset Protection	Ground baiting, M44, Trapping	C-TSC
Kosciuszko NP	Riparian Revegetation - Thredbo Village	Riparian Revegetation	Broad-toothed Rat	Asset Protection	Foliar spray, Physical/mechanical control	C-TSC
Kosciuszko NP	Broom, willow - Thredbo Village	Scotch Broom, Willow		Eradication	Cut and paint, Foliar spray, Physical/mechanical control	C-NE
Kosciuszko NP	Rabbit - Charlotte Pass	Rabbit		Containment	Ground baiting, Habitat modification, Ground shooting	C-NE
Kosciuszko NP	Rabbit - Perisher Village	Rabbit		Containment	Ground baiting, Habitat modification, Ground shooting	C-NE
Kosciuszko NP	Exotic Trees - Guthega below village	Apple, Willow		Containment	Cut and paint	C-NE

Visitor and Business Services Section - Reserve	Site name	Target pest or weed	Asset at risk	Aim of control	Action	Priority
Kosciuszko NP	Barbarea Verna - Perisher Valley	Barbarea Verna		Containment	Foliar spray	C-NE
Kosciuszko NP	Barbarea Verna - Smiggins Hole	Barbarea Verna		Containment	Foliar spray	C-NE
Kosciuszko NP	Weeds - Perisher - Guthega Rd	Goats Beard, Milfoil, Vipers Bugloss		Containment	Foliar spray	C-NE
Kosciuszko NP	Weeds - Perisher - Kosciuszko Road	Goat's Beard, Mullein, Milfoil, Vipers Bugloss, Thistle, Apple Tree, St Johns Wort		Containment	Foliar spray	C-NE
Kosciuszko NP	Weeds - Thredbo Village	Milfoil, Exotic Trees, St Johns Wort, Mullein, Vipers Bugloss, Blackberry, Juncus, Goats Beard		Containment	Foliar spray, Cut and paint, Physical/mechanical control	C-NE
Kosciuszko NP	Milfoil - Perisher - Guthega Village	Milfoil		Containment	Foliar spray	C-NE
Kosciuszko NP	Weeds - Perisher - Link Rd	Milfoil, Vipers Bugloss		Containment	Foliar spray	C-NE
Kosciuszko NP	Weeds - Perisher Village Roads	Milfoil, Vipers Bugloss, Mullein, Goats Beard, Thistles, Mifoil		Containment	Foliar spray	C-NE
Kosciuszko NP	Weeds - Guthega below village	Milfoil, Mullein, Vipers Bugloss		Containment	Foliar spray	C-NE
Kosciuszko NP	Exotic Trees - Perisher - Link Rd	Pinus, Birch, Willow		Containment	Cut and paint, Foliar spray	C-NE
Kosciuszko NP	Potentilla - Pipers Creek	Potentilla		Containment	Foliar spray	C-NE
Kosciuszko NP	St Johns Wort - Perisher - Link Rd, The Ridge	St Johns Wort		Containment	Monitoring, Physical/mechanical control	C-NE

Visitor and Business Services Section - Reserve	Site name	Target pest or weed	Asset at risk	Aim of control	Action	Priority
Kosciuszko NP	St Johns Wort - Perisher - Farm Creek	St Johns Wort		Containment	Monitoring, Physical/mechanical control	C-NE
Kosciuszko NP	General Weeds - Smiggins Hole	Sweet William, Russell Lupins, Milfoil, Mullein		Containment	Foliar spray	C-NE
Kosciuszko NP	Weeds - Wastepoint Tip Cell	Vipers Bugloss, Mullein, Serrated Tussock		Containment	Foliar spray	C-NE
Kosciuszko NP	Weeds - Sawpit Creek - Tip Site	Vipers bugloss, Mullein, Serrated Tussock, Sweet Briar		Containment	Foliar spray	C-NE
Kosciuszko NP	Weed Monitoring - Thredbo Village	Weed Monitoring Program		Containment	Monitoring	C-NE
Kosciuszko NP	Exotic grass - Sawpit Creek - VES	Exotic grass, Juncus		Containment	Foliar spray, Physical/mechanical control	M-RA

6. Consultation

The Southern Ranges Region Regional Pest Management Strategy was developed through consultation with the community and internal staff. A Pest Management Strategy Stakeholder Forum was conducted at Queanbeyan on the 2nd September 2011. A diverse range of community representatives were present, including members of local Councils, Livestock Health and Pest Authorities, ACT Parks Conservation and Lands, NSW Farmers Association, Catchment Management Authorities and several other stakeholder groups. Key issues raised from this forum were:

- the need for appropriate and long term resources to be available for pest management programs (refer to Goal 3 Objective 3.1 in Part A);
- the requirement for cooperation and landscape scale pest management programs (refer to Goal 2 Objective 2.2 in Part A);
- the need for a risk assessment approach to pest management (refer to Goal 2 Objective 2.1 in Part A);
- the requirement that high priority pest management programs be those that prevent the establishment of new pest populations (refer to Goal 1 Objective 1.1 in Part A);
- the development of staff, communities and volunteers skills in order to build the capacity of NPWS to identify and treat pests (refer to Goal 3 Objective 3.3 in Part A);
- the need for communication and education of stakeholders (refer to Goal 3 Objective 3.2 in Part A);
- the requirement to measure the effectiveness of the Pest Management Strategy (refer to Goal 3 Objective 3.4 in Part A); and
- the identification of key pest issues of horses and wild dogs in Southern Ranges Region (refer to Section 5 and section 7 of Part B).

Workshops were conducted with each operational Area with key Ranger's and Field Staff in order to accurately identify and prioritise pest management programs. Following the preparation of the draft Pest Management Strategy, the document was placed on public exhibition and comments were invited from the community, other government agencies and stakeholder groups.

7. Pest species overviews

Information about high profile pests for this region is summarised below. More details regarding the distribution, impacts and management options for these and other pest species can be found in other reference documents including the following web pages:

<http://www.dpi.nsw.gov.au/agriculture/pests-weeds/vertebrate-pests/general-information/pest-animal-survey>

<http://environment.gov.au/biodiversity/invasive/publications/humane-control.html>

<http://www.invasiveanimals.com/>

<http://www.environment.gov.au/biodiversity/invasive/ferals/index.html>

<http://www.environment.nsw.gov.au/threatenedspecies/KeyThreateningProcessesByDoctype.htm>

<http://www.dpi.nsw.gov.au/agriculture/pests-weeds/weeds/profiles>

<http://www.weeds.org.au/WoNS/>

http://www.rirdc.gov.au/programs/national-rural-issues/weeds/weeds_home.cfm

<http://www.weeds.gov.au/>

Wild Dogs (*Canis lupus spp.*)

Distribution and abundance

The wild dog is a declared pest animal under the *RLP Act 1998*. The *RLP Act 1998*, *Pest Control Order No. 17* defines wild dogs as:

“...any dog, including a dingo, that is, or has become wild, but excludes any dog kept in accordance with the Companion Animals Act 1998, the Exhibited Animals Protection Act 1986, or the Animal Research Act 1985 or any legislation made in replacement of any of those Acts”.

Predation and Hybridisation by Feral Dogs (Canis lupus familiaris) is also a key threatening process under the *Threatened Species Conservation Act (TSC) 1995*. In Southern Ranges (SR) Region, wild dogs are mainly found in the parks within or contiguous with the Snowy Mountains. Abundance appears to vary with the ability of the landscape to support prey.

Impacts

Wild dogs predate upon stock on neighbouring pastoral properties. In the larger parks (i.e. Schedule 2 Parks under the *Pest Control Order No. 17*), wild dogs play an important role in maintaining ecosystem function as an apex species or higher order predator.

Priorities for control

All wild dog control programs are a Critical Priority. Wild dog management is implemented under the following cooperative programs:

- Adaminaby/ Yaouk Wild Dog Cooperative Management Plan;
- Cooperative Wild Dog/ Fox Plan Thredbo & Ingebyra Areas;
- Cooperative Wild Dog/ Fox Plan Rocky Plan, Snowy Plain Area;
- Cooperative Wild Dog/ Fox Plan Dalgetty-Paupong Areas;
- Cooperative Wild Dog/ Fox Plan Corrowong/Tombong/Merriangaah Areas Byadbo Wilderness Area - Kosciuszko NP;
- Wadbilliga Co-operative Wild Dog and Fox Control Plan 2003-04;
- East Gilmore Cooperative Wild Dog Management Plan;
- Goobragandra and Blowering Cooperative Wild Dog Management Plan;
- Brindabella & Wee Jasper Valleys Cooperative Wild Dog/Fox Plan;
- Burrinjuck Cooperative Wild Dog Management Plan;
- Cooperative Wild Dog/ Fox Plan Upper Murray Dog Group; and
- 3 Year Cooperative Wild Dog Plan Hume Wild Dog Working Group.

Control

SR Region will be guided by Cooperative Wild Dog Management Plans for all wild dog control. Control methods will comply with the NPWS Wild Dog Policy, the NSW DPI Vertebrate Pest Control Manual and the DEH & DPI Model Code of Practice for the Humane Control of Wild Dogs and related Standard Operating Procedures. Routine control will incorporate a variety of methods including 1080 baiting, soft-jaw trapping by experienced operators and opportunistic shooting.

Monitoring

Monitoring will be conducted as outlined in the Cooperative Wild Dog Management Plans.

Red Fox (*Vulpes vulpes*)

Distribution and abundance

Foxes are presumed to be widespread in the landscape across SR Region with an unknown abundance occurring in most of the Region's parks.

Impacts

Predation by the European Red Fox is a key threatening process under the TSC Act and the Commonwealth *Environment Protection and Biodiversity Conservation (EPBC) Act 1999*. Predation by the fox is a major threat to the survival of native Australian fauna, with non-flying mammals weighing between 35g and 5,500g and ground-nesting birds at greatest risk. *The Threat Abatement Plan, Predation by the Red Fox* (Fox TAP) provides a strategy for fox control to aid the conservation of native fauna in New South Wales. In particular, it identifies those threatened species which are most likely to be impacted by fox predation and the sites at which fox control for these species is most critical. SR Region contains several threatened species that are at risk from fox predation and the Mountain Pygmy Possum and Broad-toothed Rat have been identified as priority sites in the Fox TAP.

Priorities for control

Fox control and monitoring programs associated with the Fox TAP Mountain Pygmy Possum and Broad-toothed Rat sites are a Critical Priority. Cooperative fox control programs (mainly associated with lambing seasons) are of a Medium Priority.

Control

Cooperative control is essential for effective fox control across the landscape. Control methods include 1080 baiting, soft-jaw trapping, M44 ejectors, opportunistic shooting and cage trapping. Control methods will comply with the NSW DPI Vertebrate Pest Control Manual and the DEH & DPI Model Code of Practice for the Humane Control of Foxes and related Standard Operating Procedures.

Monitoring

Coordinated fox control programs during lambing will only be monitored with regard to successfully undertaking the control program within the same time period as the neighbours. FoxTAP control programs will be monitored as detailed in site-plans.

Feral Cats (*Felis catus*)

Distribution and abundance

Feral Cats are presumed to be widespread in the landscape across SR Region with an unknown abundance in most of the Region's parks.

Impacts

Predation by the feral cat has been declared a Key Threatening Process under the TSC Act and the EPBC Act. Predation by feral cats has been implicated in the extinction and decline of many species of mammals and birds on islands around Australia and in other parts of the world, and in the early extinction of up to seven species of small mammals on the Australian mainland.

Priorities for control

Due to the limitations imposed by current control techniques, feral cat control is unfeasible over large areas. Locations where feral cat control may occur include complementary control programs at Fox TAP sites (Critical Priority) or in recreational areas (such as in the Kosciuszko NP Resorts) (Medium Priority).

Control

Current control techniques for feral cat control are highly time consuming and mostly ineffective. Cooperative control is essential for effective feral cat control across the landscape. Control methods will include opportunistic shooting, cage trapping or soft-jaw trapping. Control methods will comply with the DEH & DPI Model Code of Practice for the Humane Control of Feral Cats and related Standard Operating Procedures.

Monitoring

Feral cat control programs implemented for threatened species conservation will be monitored by measuring the response of the threatened species concerned.

Monitoring of the success of reducing feral cat numbers in recreational areas will be monitored by the reduction of complaints or reports by the public in those locations.

Feral Goats (*Capra hircus*)

Distribution and abundance

Feral goats are present throughout the landscape and occur predominantly in steep and often inaccessible terrain. Abundance varies with the affected park control history and the ability to recolonise from neighbouring lands.

Impacts

Competition and habitat degradation by feral goats have been declared a Key Threatening Process under the TSC Act and the EPBC Act. Feral goats present a threat to plant communities given the large number of plant species that are palatable to them. Feral goats can cause significant habitat degradation, decrease soil stability, contribute to erosion and significantly alter the habitat of native fauna and flora.

Priorities for control

Feral goat populations that have potential impact on threatened species or communities are of Critical Priority and will be investigated, and control programs implemented where necessary and feasible. New or developing occurrences of a highly invasive species are also of Critical Priority. Feral goat populations also occur in Wilderness Areas and the Kosciuszko NP management units and are of Medium Priority. Ongoing, effective cooperative control programs for feral goats are a Medium Priority.

Control

Cooperative control programs are essential for the control of feral goats. Feral goat control techniques include aerial shooting, opportunistic shooting and trapping. Control methods will comply with the NSW DPI Vertebrate Pest Control Manual, the Feral Animal Aerial Shooting Team Guidelines and the DEH & DPI Model Code of Practice for the Humane Control of Feral Goats and related Standard Operating Procedures.

Monitoring

Routine patrols by rangers and field staff monitor feral goat presence in the parks. Aerial shooting records will be utilised to determine if populations are decreasing over time. Feral goat control programs implemented for threatened species or ecosystem conservation will be monitored by measuring the response of the threatened species or ecosystem concerned.

Feral Pigs (*Sus scrofa*)

Distribution and abundance

Feral pigs are widespread across SR Region and many of the affected parks have associated problems, e.g. illegal pig hunters introducing new pigs and disturbing control programs. Although abundance in SR Region parks is generally low due to control measures, neighbouring lands may contain higher numbers.

Impacts

Predation, habitat degradation, competition and disease transmission by feral pigs has been declared a Key Threatening Process under the TSC Act and the EPBC Act. Feral pigs present a significant threat to native species and ecological communities as a result of their behaviour and feeding habits. Feral pigs are a declared pest animal under the RLP Act 1998.

Priorities for control

Feral pig populations that have potential impact on threatened species or communities are of Critical Priority and will be investigated, and control programs implemented where necessary and feasible. Feral pig populations in the ACT catchment is of Critical Priority and have a potential impact on the water supply and associated human health issues. New or developing occurrences of a highly invasive species are also of Critical Priority. Feral pig populations also occur in Wilderness Areas and the Kosciuszko NP management units and are of Medium Priority. Cooperative feral pig control programs that have ongoing, proven effectiveness and participation are of a Medium Priority.

Control

Cooperative control is essential for effective feral pig control across the landscape. Control methods will include 1080 baiting, aerial shooting, opportunistic shooting and cage trapping. Control methods will comply with the NSW DPI Vertebrate Pest Control Manual, the Feral Animal Aerial Shooting Team Guidelines and the DEH & DPI Model Code of Practice for the Humane Control of Feral Pigs and related Standard Operating Procedures.

Monitoring

Coordinated control programs for neighbouring agricultural or catchment outcomes will only be monitored with regard to successfully undertaking the control program within the same time period as the neighbours. Feral pig control programs implemented for threatened species or ecosystem conservation will be monitored by measuring the response of the threatened species or ecosystem concerned.

Feral Deer (*Dama sp.*, *Cervus sp.* & *Axis sp.*)

Distribution and abundance

Feral deer are increasingly becoming established across SR Region and are a relatively new feral animal in the area.

Impacts

The environmental degradation caused by feral deer has been declared a Key Threatening Process under the TSC Act. Six species of deer have established feral populations in NSW. SR Region mainly has Sambar, Red and Fallow Deer populations. Impacts of feral deer include overgrazing, browsing, trampling, ring-barking, antler rubbing, dispersal of weeds, creation of trails, concentration of nutrients, exposing soils to erosion/accelerating erosion, and the subsequent degradation of water quality in creek and river systems. Deer are a game animal under the *Game and Feral Animal Control Act 2002*. NPWS estate is excluded from the public lands covered by this Act yet neighbouring Crown or Forests NSW lands may allow licensed hunting activities.

Priorities for control

Feral deer populations that have potential impact on threatened species or communities are of Critical Priority and will be investigated, and control programs implemented where necessary and feasible. New or developing occurrences of a highly invasive species are of Critical Priority. Feral deer populations also occur in Wilderness Areas and the Kosciuszko NP management units and are of Medium Priority.

Control

Cooperative control is essential for effective feral deer control across the landscape. Control methods will include opportunistic shooting or specific shooting operations targeting identified feral deer populations. Control methods will comply with the DEH & DPI Standard Operating Procedures for the Ground Shooting of Feral Deer and the Feral Animal Aerial Shooting Team Guidelines.

Monitoring

Routine patrols by rangers and field staff monitor feral deer presence in the parks. Feral deer control programs implemented for threatened species or ecosystem conservation will be mainly monitored by measuring the response of the threatened species or ecosystem concerned.

Feral Rabbits (*Oryctolagus cuniculus*)

Distribution and abundance

Feral rabbits are widespread across SR Region, not only living in warrens but also inhabiting a variety of surface habitat.

Impacts

Competition and grazing by the feral European Rabbit has been declared a Key Threatening Process under the TSC Act and the EPBC Act. Feral rabbits occupy a wide range of habitats and there is evidence that feral rabbits impact negatively on indigenous species via competition for resources, alteration of the structure and composition of vegetation, and land degradation. Feral rabbits are a declared pest animal under the RLP Act 1998.

Priorities for control

Feral rabbit populations that have potential impact on threatened species or communities are of Critical Priority and will be investigated, and control programs implemented where necessary and feasible. New or developing occurrences of a highly invasive species are also of Critical Priority. Medium Priority feral rabbit populations occur in the vicinity of a variety of Kosciuszko NP historic huts and precincts and in the vicinity of Aboriginal artefact scatters. Feral rabbit populations also occur in Wilderness Areas and the Kosciuszko NP management units and are of Medium Priority.

Control

Cooperative control is essential for effective feral rabbit control across the landscape. Control methods will include baiting (1080 or Pindone), warren fumigation (Phosphine or CO₂), opportunistic shooting, warren destruction or direct infection of a population with a biological control (e.g. RCD or Myxomatosis). Control methods will comply with the NSW DPI Vertebrate Pest Control Manual and the DEH & DPI Model Code of Practice for the Humane Control of Rabbits and related Standard Operating Procedures.

Monitoring

Coordinated control programs for neighbouring agricultural outcomes will only be monitored with regard to successfully undertaking the control program within the same time period as the neighbours. Feral rabbit control programs implemented for threatened species or ecosystem conservation will be monitored by measuring the response of the threatened species or ecosystem concerned.

Horses (*Equus caballus*)

Distribution and abundance

Horse populations are dispersed within Kosciuszko NP and neighbouring lands. Recent estimates place the population at exceeding 5,000 horses within the national park.

Impacts

A horse is a large, hoofed, introduced herbivore that follows trails and forms social units. When the horse population is large these characteristics lead to an increase in erosion, damage to stream and river banks, trampling of bogs and damage to sensitive vegetation. Horses may assist in the spread of palatable weeds within their home range. There is considerable debate between environmental groups, adamant that horses are feral animals that must be controlled, and passionate supporters of the cultural image of wild horses running free in the mountains.

Priorities for control

Control priorities were determined by the Kosciuszko NP Wild Horse Steering Committee and the Kosciuszko NP Wild Horse Management Plan. The 2006 Plan of Management for Kosciuszko National Park identifies that horses are to be excluded from the following areas:

- Main Range Management Unit;
- Yarrangobilly Management Unit;
- Cooleman Plain Management Unit;
- Safety risk areas such as highways;
- Areas of the park where horses have not been or have only recently been recorded;
- Areas of the park adjoining other Australian Alps national parks and reserves; and
- Feeder areas for all these parts of the park.

In addition to the Kosciuszko NP Wild Horse Management Plan, horse populations that potentially impact on threatened species or communities are of Critical Priority and will be investigated, and control programs implemented where necessary and feasible.

Control

Control methods were determined by the Kosciuszko NP Horse Management Community Steering Group and the Kosciuszko NP Horse Management Plan. Control methods will also be guided by the DEH & DPI Model Code of Practice for the Humane Control of Feral Horses and the related Standard Operating Procedures and A Report on the Management of Feral Horses in National Parks in NSW (Professor Tony English).

Monitoring

Monitoring of horse control will be guided by the Kosciuszko NP Wild Horse Management Plan.

European Wasp (*Vespula germanica*)

Distribution and abundance

European wasps are present throughout Kosciuszko NP and adjacent reserves.

Impacts

Wasps aggressively defend their nest, swarming out to attack if disturbed. Their sting is painful and multiple stings, or a sting in the throat, can be dangerous. Unlike bees, they can sting multiple times. European wasps are also an environmental pest. In large numbers, they are a threat to native insects and spiders.

Priorities for control

Critical Priority control programs for European wasps are around recreational or work locations in order to reduce the risk to human health.

Control

Control methods will include the use of bait stations (containing fipronil) and the treatment of nests by qualified pest control operators.

Monitoring

Monitoring of the success of control programs will be by the ranger responsible for the management area and will consist of routine inspections that will be summarised into Area and Regional Annual Reports and the review of the Pest Management Strategy.

Introduced Grasses (Chilean Needlegrass, Sweet Vernal Grass, African Lovegrass, Spiny Burr-grass, Other Pasture Grasses)

Distribution and abundance

Introduced grasses occur throughout the SR Region. It is possible that introduced grasses occur in locations within the parks that have not yet been identified.

Impacts

Introduced grasses invade native grasslands, grassy woodlands and riparian environments. The invasion of native plant communities by exotic perennial grasses has been declared a Key Threatening Process under the TSC Act. Chilean Needlegrass is a Weed of National Significance.

Priorities for control

General pasture grass infestations that have potential impact on threatened species are of Critical Priority and will be investigated, and control programs implemented where necessary and feasible. New or developing occurrences (including Class 1 and 2 noxious weeds) of a highly invasive species are of Critical Priority. Introduced grass infestations that occur in Wilderness and the Kosciuszko NP management units are of Medium Priority. The cooperative control of Class 3 or 4 noxious weeds causing significant environmental or agricultural impacts are also a Medium Priority with any cooperative programs for Class 4 noxious weeds (with less significant impacts) being a Lower Priority. Introduced grass infestations that were previously treated due to localised impacts will be maintained for previous program benefits (Lower Priority).

Control

Control methods will include physical removal and spot or boom spraying.

Monitoring

Monitoring of the success of control programs will be by the ranger responsible for the management area and will consist of routine inspections that will be summarised into Area and Regional Annual Reports and the review of the Pest Management Strategy. Control programs implemented for threatened species or ecosystem conservation will be monitored by measuring the response of the threatened species or ecosystem concerned.

Serrated Tussock (*Nassella trichotoma*)

Distribution and abundance

Serrated tussock mainly occurs on the Southern Tablelands and on the Monaro reserves. It is possible that serrated tussock occurs in other adjacent SR Region reserves and has not been identified.

Impacts

Serrated tussock is a Weed of National Significance. It is a major agricultural weed that also invades native grasslands, grassy woodlands, drier forests and rocky shrublands. The invasion of native plant communities by exotic perennial grasses (including Serrated Tussock) has been declared a Key Threatening Process under the TSC Act.

Priorities for control

Serrated tussock infestations that have potential impact on threatened species are of Critical Priority and will be investigated, and control programs implemented where necessary and feasible. New or developing occurrences of a highly invasive species are of Critical Priority. The cooperative control of Class 3 or 4 noxious weeds causing significant environmental or agricultural impacts are also a Medium Priority with any cooperative programs for Class 4 noxious weeds (with less significant impacts) being a Lower Priority. Serrated tussock infestations that have localised impacts where effort will be required to maintain previous program benefits are of a Lower Priority.

Control

Control methods will include physical removal and spot or boom spraying.

Monitoring

Monitoring of the success of control programs will be by the ranger responsible for the management area and will consist of routine inspections that will be summarised into Area and Regional Annual Reports and the review of the Pest Management Strategy. Control programs implemented for threatened species or ecosystem conservation will be monitored by measuring the response of the threatened species or ecosystem concerned.

Thistle (Onopordum spp., Cirsium spp., Carduus spp., Sonchus spp., etc)

Distribution and abundance

Thistles are widespread throughout SR Region parks and the broader region.

Impacts

There are a variety of thistles that can form dense patches that suppress other ground-flora and restrict the movement of wildlife.

Priorities for control

Thistle infestations that have potential impact on threatened species are of Critical Priority and will be investigated, and control programs implemented where necessary and feasible. New or developing occurrences of a highly invasive species are of Critical Priority. Thistle infestations that occur in Wilderness and the Kosciuszko NP management units are of Medium Priority. The maintenance of landscape and recreational values are a Medium Priority. The cooperative control of Class 4 noxious weeds causing significant environmental or agricultural impacts are also a Medium Priority with any cooperative programs for Class 4 noxious weeds (with less significant impacts) being a Lower Priority. Thistle infestations that were previously treated due to localised impacts will be maintained for previous program benefits (Lower Priority).

Control

Control methods will include physical removal, biological control and spot or boom spraying.

Monitoring

Monitoring of the success of control programs will be by the ranger responsible for the management area and will consist of routine inspections that will be summarised into Area and Regional Annual Reports and the review of the Pest Management Strategy. Control programs implemented for threatened species or ecosystem conservation will be monitored by measuring the response of the threatened species or ecosystem concerned.

St Johns Wort (*Hypericum perforatum*)

Distribution and abundance

St Johns wort is widespread throughout SR Region parks and the broader region. The invasive nature of St Johns wort, the variety of terrain it inhabits and the presence of large infestations throughout the broader region limit the practical ability of chemically controlling heavily infested areas. Biocontrol has been released within key locations in several SR Region parks.

Impacts

St Johns wort forms extensive infestations that exclude most other ground-flora and seriously impeding overstorey recruitment. When livestock graze pastures heavily infested with flowering St Johns wort, some can develop clinical signs of hypericin poisoning (i.e. photo sensitivity).

Priorities for control

St Johns wort infestations that have potential impact on threatened species are of Critical Priority and will be investigated, and control programs implemented where necessary and feasible. New or developing occurrences of a highly invasive species are of Critical Priority. St Johns wort infestations that occur in Wilderness and the Kosciuszko NP management units are of Medium Priority. The maintenance of landscape and recreational values are a Medium Priority. The cooperative control of Class 3 or 4 noxious weeds causing significant environmental or agricultural impacts are also a Medium Priority with any cooperative programs for Class 4 noxious weeds (with less significant impacts) being a Lower Priority. St Johns wort infestations that were previously treated due to localised impacts will be maintained for previous program benefits (Lower Priority).

Control

Control methods will include physical removal, biological control and spot or boom spraying.

Monitoring

Monitoring of the success of control programs will be by the ranger responsible for the management area and will consist of inspections that will be summarised into Area and Regional Annual Reports and the review of the Pest Management Strategy. Control programs implemented for threatened species or ecosystem conservation will be monitored by measuring the response of the threatened species or ecosystem concerned.

Great & Twiggy Mullein (*Verbascum spp.*)

Distribution and abundance

Mullein occurs in several SR Region parks and limited control has occurred.

Impacts

Mullein colonises sites of low fertility, particularly disturbed areas. The rosettes cover a large area and suppress other ground flora.

Priorities for control

Mullein infestations that have potential impact on threatened species are of Critical Priority and will be investigated, and control programs implemented where necessary and feasible. New or developing occurrences of a highly invasive species are of Critical Priority. Mullein infestations that occur in Wilderness and the Kosciuszko NP management units are of Medium Priority. The maintenance of landscape and recreational values are a Medium Priority. Mullein infestations that were previously treated due to localised impacts will be maintained for previous program benefits (Lower Priority).

Control

Control methods will include physical removal, spot spraying and boom spraying.

Monitoring

Monitoring of the success of control programs will be by the ranger responsible for the management area and will consist of routine inspections that will be summarised into Area and Regional Annual Reports and the review of the Pest Management Strategy. Control programs implemented for threatened species or ecosystem conservation will be monitored by measuring the response of the threatened species or ecosystem concerned.

Paterson's Curse (*Echium plantagineum*) and Viper's Bugloss (*Echium vulgare*)

Distribution and abundance

Paterson's curse is widespread throughout SR Region parks and the broader region (with viper's bugloss occurring at higher elevations). The invasive nature of Paterson's Curse, the variety of terrain it inhabits and the presence of large infestations throughout the broader region limit the practicality of chemically controlling heavily infested areas.

Impacts

Paterson's curse and viper's bugloss establish large populations rapidly on disturbed areas, competing vigorously with smaller indigenous plants and impeding overstorey regeneration.

Priorities for control

Paterson's curse and viper's bugloss infestations that have potential impact on threatened species are of Critical Priority and will be investigated, and control programs implemented where necessary and feasible. New or developing occurrences of a highly invasive species are of Critical Priority. Paterson's curse and viper's bugloss infestations that occur in Wilderness and the Kosciuszko NP management units are of Medium Priority. The maintenance of landscape and recreational values are also a Medium Priority. The cooperative control of Class 4 noxious weeds causing significant environmental or agricultural impacts are also a Medium Priority with any cooperative programs for Class 4 noxious weeds (with less significant impacts) being a Lower Priority. Paterson's curse and viper's bugloss infestations that were previously treated due to localised impacts will be maintained for previous program benefits (Lower Priority).

Control

Control methods will include physical removal, biological control, spot spraying and boom spraying.

Monitoring

Monitoring of the success of control programs will be by the ranger responsible for the management area and will consist of routine inspections that will be summarised into Area and Regional Annual Reports and the review of the Pest Management Strategy. Control programs implemented for threatened species or ecosystem conservation will be monitored by measuring the response of the threatened species or ecosystem concerned.

Milfoil or Yarrow (*Achillea millefolium*)

Distribution and abundance

Milfoil is commonly found within Kosciuszko NP along drains, culverts and embankments.

Impacts

Milfoil has the potential to invade native vegetation, threatening the integrity of the native flora.

Priorities for control

Milfoil infestations that have potential impact on threatened species are of Critical Priority and will be investigated, and control programs implemented where necessary and feasible. New or developing occurrences of a highly invasive species are of Critical Priority. Milfoil infestations that occur in Wilderness and the Kosciuszko NP management units are of Medium Priority. The maintenance of landscape and recreational values are a Medium Priority. Milfoil infestations that were previously treated due to localised impacts will be maintained for previous program benefits (Lower Priority).

Control

Control methods will include physical removal, spot spraying and boom spraying.

Monitoring

Monitoring of the success of control programs will be by the ranger responsible for the management area and will consist of routine inspections that will be summarised into Area and Regional Annual Reports and the review of the Pest Management Strategy. Control programs implemented for threatened species or ecosystem conservation will be monitored by measuring the response of the threatened species or ecosystem concerned.

Ox-eye Daisy (*Leucanthemum vulgare*)

Distribution and abundance

Ox-eye daisy is established in several locations within Kosciuszko NP (Guthega Rd, Happy Jacks and Tantangara Rd).

Impacts

Ox-eye daisy grows so densely that it excludes almost all other vegetation, threatening the integrity of the woodland and grassland ecosystems.

Priorities for control

Ox-eye daisy infestations that have potential impact on threatened species are of Critical Priority and will be investigated, and control programs implemented where necessary and feasible. New or developing occurrences of a highly invasive species are of Critical Priority. Ox-eye daisy infestations that occur in Wilderness and the Kosciuszko NP management units are of Medium Priority. Ox-eye daisy infestations that were previously treated due to localised impacts will be maintained for previous program benefits (Lower Priority).

Control

Control methods will include physical removal, spot spraying and boom spraying.

Monitoring

Monitoring of the success of control programs will be by the ranger responsible for the management area and will consist of routine inspections that will be summarised into Area and Regional Annual Reports and the review of the Pest Management Strategy. Control programs implemented for threatened species or ecosystem conservation will be monitored by measuring the response of the threatened species or ecosystem concerned.

Orange Hawkweed (*Hieracium aurantiacum*)

Distribution and abundance

Within Kosciuszko NP there are 135 orange hawkweed infestations, totalling 7.43 ha, currently confined to an area of some 8,165ha in the Jagungal Wilderness area. Orange hawkweed (*Hieracium aurantiacum*) presents a major threat to primary production and biodiversity across south eastern Australia. It is on the “National Alert List of Environmental Weeds”. In addition, orange hawkweed is recognised as an “Agricultural Sleeper Weed” in Australia. Under the NSW *Noxious Weed Act 1993*, all hawkweeds (*Heiracium* spp.) are listed as Class 1 noxious weeds.

Impacts

Loss of botanical biodiversity is perhaps the greatest potential impact of orange hawkweed. Its ability to quickly establish and spread is evident from experiences in other countries where hawkweed species have become very serious environmental weeds. *Hieracium* species have allelopathic interactions with other plant species. Soil acidity increases underneath established patches of orange hawkweed, modifying the soil environment and potentially inhibiting the growth of other grassland species.

Priorities for control

Orange hawkweed infestations that have potential impact on threatened species are of Critical Priority and will be investigated, and control programs implemented where necessary and feasible. New or developing occurrences (including Class 1 noxious weeds) of a highly invasive species are of Critical Priority.

Control

Control methods will include physical removal, biological control, spot spraying and boom spraying.

Monitoring

Monitoring of the success of control programs will be by the project officer or ranger responsible for the orange hawkweed management program. This monitoring will be guided by the previous seasons Orange Hawkweed Control Program Report and recommendations. Control programs implemented for threatened species or ecosystem conservation will be monitored by measuring the response of the threatened species or ecosystem concerned.

Other Herbaceous Weeds

Distribution and abundance

There are a variety of other herbaceous weeds that occur within SR Region reserves. These include Apple of Sodom, blue periwinkle, Bokhara clover, capeweed, fleabane, goats beard, green cestrum, hemlock, horehound, greater lotus, russell lupin, mustard weed, noogoora burr, tutsan and wintercress.

Impacts

Herbaceous weeds exclude other ground-flora and seriously impede the growth and regeneration of overstorey plants, threatening the integrity of ecosystems.

Priorities for control

Herbaceous weed infestations that have potential impact on threatened species are of Critical Priority and will be investigated, and control programs implemented where necessary and feasible. New or developing occurrences (including Class 1 and 2 noxious weeds) of a highly invasive species are of Critical Priority. Herbaceous weed infestations that occur in Wilderness and the Kosciuszko NP management units are of Medium Priority. The maintenance of landscape and recreational values are a Medium Priority. The cooperative control of Class 3 or 4 noxious weeds causing significant environmental or agricultural impacts are also a Medium Priority with any cooperative programs for Class 4 noxious weeds (with less significant impacts) being a Lower Priority. Herbaceous weed infestations that were previously treated due to localised impacts will be maintained for previous program benefits (Lower Priority).

Control

Control methods will include physical removal, biological control, spot spraying and boom spraying.

Monitoring

Monitoring of the success of control programs will be by the ranger responsible for the management area and will consist of routine inspections that will be summarised into Area and Regional Annual Reports and the review of the Pest Management Strategy. Control programs implemented for threatened species or ecosystem conservation will be monitored by measuring the response of the threatened species or ecosystem concerned.

English Broom (*Cytisus scoparius*) or Cape Broom (*Genista monspessulana*)

Distribution and abundance

English and Cape Broom are highly invasive species in cooler, higher rainfall districts. Broom is found scattered throughout Kosciuszko NP and is found in proximity to reserves on the Monaro.

Impacts

Broom is capable of totally transforming invaded habitats. It simplifies the structure and diversity of the ground-flora, and crowds or shades out shrubs and tree seedlings, eventually preventing overstorey regeneration. Dense stands seriously impede movement and act as harbour for feral pigs.

Priorities for control

Broom infestations that have potential impact on threatened species are of Critical Priority and will be investigated, and control programs implemented where necessary and feasible. New or developing occurrences (including Class 2 noxious weeds) of a highly invasive species are of Critical Priority.

Control

Control methods will include physical removal, stem injection/cut stump and spot spraying.

Monitoring

Monitoring of all known broom locations occurs annually. An aerial survey of infestation locations is recommended every 5 years. Control programs implemented for threatened species or ecosystem conservation will be monitored by measuring the response of the threatened species or ecosystem concerned.

Sweet Briar (*Rosa rubiginosa*)

Distribution and abundance

Sweet briar is widespread throughout SR Region parks and the broader region.

Impacts

Sweet briar occurs primarily in light shaded and sunny positions on well-drained soils. Plants commonly form thickets that prevent movement through areas, crowd out competing shrubs and prevent overstorey regeneration.

Priorities for control

Sweet briar infestations that have potential impact on threatened species are of Critical Priority and will be investigated, and control programs implemented where necessary and feasible. New or developing occurrences of a highly invasive species are of Critical Priority. Sweet briar infestations that occur in Wilderness and the Kosciuszko NP management units are of Medium Priority. The maintenance of landscape and recreational values are also a Medium Priority. The cooperative control of Class 4 noxious weeds causing significant environmental or agricultural impacts are also a Medium Priority with any cooperative programs for Class 4 noxious weeds (with less significant impacts) being a Lower Priority. Sweet briar infestations that were previously treated due to localised impacts will be maintained for previous program benefits (Lower Priority).

Control

Control methods will include physical removal, stem injection/cut stump/basal bark and spot spraying.

Monitoring

Monitoring of the success of control programs will be by the ranger responsible for the management area and will consist of routine inspections that will be summarised into Area and Regional Annual Reports and the review of the Pest Management Strategy. Control programs implemented for threatened species or ecosystem conservation will be monitored by measuring the response of the threatened species or ecosystem concerned.

Blackberry (*Rubus fruticosus* spp. agg.)

Distribution and abundance

Blackberry is widespread throughout SR Region parks and the broader region. The invasive nature of blackberries, the variety of terrain they inhabit and the presence of large infestations throughout the broader region limits the practicality of physical or chemical control all blackberry infestations within the larger parks. Biocontrol has been released within key locations in several SR Region reserves.

Impacts

Blackberry is a Weed of National Significance. It is a widespread, highly invasive species generally found in areas with annual rainfall above 700mm. Blackberry forms dense, impenetrable thickets that exclude all indigenous vegetation, provide harbour to pest animals such as foxes and rabbits and can increase the fire hazard of infested bushland.

Priorities for control

Blackberry infestations that have potential impact on threatened species are of Critical Priority and will be investigated, and control programs implemented where necessary and feasible. New or developing occurrences of a highly invasive species are of Critical Priority. Blackberry infestations that occur in Wilderness and the Kosciuszko NP management units are of Medium Priority. The maintenance of landscape and recreational values are also a Medium Priority. The cooperative control of Class 4 noxious weeds causing significant environmental or agricultural impacts are also a Medium Priority with any cooperative programs for Class 4 noxious weeds (with less significant impacts) being a Lower Priority. Blackberry infestations that were previously treated due to localised impacts will be maintained for previous program benefits (Lower Priority).

Control

Control methods will include physical removal, biological control, stem injection/cut stump/basal bark and spot spraying.

Monitoring

Monitoring of the success of control programs will be by the ranger responsible for the management area and will consist of routine inspections that will be summarised into Area and Regional Annual Reports and the review of the Pest Management Strategy. Control programs implemented for threatened species or ecosystem conservation will be monitored by measuring the response of the threatened species or ecosystem concerned.

Willow (*Salix spp.*)

Distribution and abundance

Willow occurs throughout the riparian areas of SR Region.

Impacts

Willows are a Weed of National Significance and have invaded riverbanks and wetlands of temperate Australia. Willows compete vigorously for space, water and nutrients eliminating virtually all indigenous vegetation within an infestation. They alter the shape of banks, streambeds and channels through the capture of enormous amounts of sediment.

Priorities for control

Willow infestations that have potential impact on threatened species are of Critical Priority and will be investigated, and control programs implemented where necessary and feasible. New or developing occurrences (including Class 2 noxious weeds) of a highly invasive species are of Critical Priority. Willow infestations that occur in Wilderness and the Kosciuszko NP management units are of Medium Priority. The maintenance of landscape and recreational values are a Medium Priority. The cooperative control of Class 3 or 4 noxious weeds causing significant environmental or agricultural impacts are also a Medium Priority with any cooperative programs for Class 4 noxious weeds (with less significant impacts) being a Lower Priority. Willow infestations that were previously treated due to localised impacts will be maintained for previous program benefits (Lower Priority).

Control

Control methods will include physical removal, stem injection/cut stump/basal bark and spot spraying.

Monitoring

Monitoring of the success of control programs will be by the ranger responsible for the management area and will consist of routine inspections that will be summarised into Area and Regional Annual Reports and the review of the Pest Management Strategy. Aerial surveys may be required to identify any further infestations (possibly in conjunction with the broom aerial surveys). Control programs implemented for threatened species or ecosystem conservation will be monitored by measuring the response of the threatened species or ecosystem concerned.

Pine (*Pinus spp.*)

Distribution and abundance

Pine occurs on numerous reserves within SR Region.

Impacts

Pines establish in both disturbed and undisturbed bushland. Incursions generally develop along the margins where established pines abut bushland, then gradually spread deeper into natural areas. Stands radically simplify the composition of ground-flora vegetation, shade or crowd out most overstorey species and prevent almost all regeneration. Pines may also establish in the frost hollows (inverted tree lines) of Kosciuszko NP where eucalypt growth is impeded.

Priorities for control

Pine infestations that have potential impact on threatened species are of Critical Priority and will be investigated, and control programs implemented where necessary and feasible. New or developing occurrences of a highly invasive species are of Critical Priority. Pine infestations that occur in Wilderness and the Kosciuszko NP management units are of Medium Priority. The maintenance of landscape and recreational values are a Medium Priority. Pine infestations that were previously treated due to localised impacts will be maintained for previous program benefits (Lower Priority).

Control

Control methods will include physical removal, stem injection/cut stump/basal bark and spot spraying.

Monitoring

Monitoring of the success of control programs will be by the ranger responsible for the management area and will consist of routine inspections that will be summarised into Area and Regional Annual Reports and the review of the Pest Management Strategy. Control programs implemented for threatened species or ecosystem conservation will be monitored by measuring the response of the threatened species or ecosystem concerned.

Other Non-endemic Trees or Shrubs

Distribution and abundance

There are a variety of non-endemic trees and shrubs that occur within SR Region reserves. These include African boxthorn, birch, cotoneaster, elms, false acacia, fruit trees, hawthorn, holly and poplar.

Impacts

Non-endemic trees and shrubs have a major impact on bushland habitats, shading out ground-flora and seriously impeding the growth and regeneration of overstorey plants.

Priorities for control

Non-endemic tree and shrub infestations that have potential impact on threatened species are of Critical Priority and will be investigated, and control programs implemented where necessary and feasible. New or developing occurrences (including Class 1 and 2 noxious weeds) of a highly invasive species are of Critical Priority. Non-endemic tree and shrub infestations that occur in Wilderness and the Kosciuszko NP management units are of Medium Priority. The maintenance of landscape and recreational values are a Medium Priority. The cooperative control of Class 3 or 4 noxious weeds causing significant environmental or agricultural impacts are also a Medium Priority with any cooperative programs for Class 4 noxious weeds (with less significant impacts) being a Lower Priority. Non-endemic tree and shrub infestations that were previously treated due to localised impacts will be maintained for previous program benefits (Lower Priority).

Control

Control methods will include physical removal, stem injection/cut stump/basal bark, spot spraying and boom spraying.

Monitoring

Monitoring of the success of control programs will be by the ranger responsible for the management area and will consist of routine inspections that will be summarised into Area and Regional Annual Reports and the review of the Pest Management Strategy. Control programs implemented for threatened species or ecosystem conservation will be monitored by measuring the response of the threatened species or ecosystem concerned.

8. Pest distribution tables

The following pest distribution tables give an overview of significant pest species for each reserve within the Region. The data derived from a combination of systematic surveys, consultation with staff and other agencies and through planning processes. The tables are not comprehensive lists of all pest species within the Region.

- Denotes established widespread populations throughout a reserve
- Denotes scattered populations throughout a reserve
- ⊙ Denotes isolated populations restricted to a small geographic area of a reserve

Reserve	Wild Dog	Fox	Cat	Goat	Pig	Deer	Rabbit
Bango NR		●	●				⊙
Belmount SCA		●	●				⊙
Benambra NP		●	●			⊙	⊙
Bendick Murrell NR		●	●	⊙		⊙	⊙
Bimberi NR	●	●	●		⊙	⊙	⊙
Binjura NR		●	●	○		○	
Black Andrew NR	○	●	●	⊙	○		⊙
Bobundara NR		●	●			○	○
Bogandyera NR	○	●	●	○	○	○	○
Brindabella NP	●	●	●		⊙	⊙	⊙
Brindabella SCA	●	●	●		⊙	⊙	⊙
Burnt School NR		●	●	⊙	⊙	⊙	⊙
Burra Creek NR		●	●	⊙	⊙	⊙	
Burrinjuck NR	○	●	●	⊙	⊙	⊙	⊙
Burwood Creek NR		●	●				
Clarks Hill NR	○	●	●		○	○	○
Coomartha NR		●	●			○	○
Courabyra NR		●	●		⊙		
Cuumbeun NR		●	●				⊙
Dananbilla NR		●	●	⊙		⊙	⊙
Dangelong NR	○	●	●	○	○	○	○
Doodle Cooma Swamp		●	●				
Downfall NR		●	●			⊙	⊙
Ellerslie NR		●	●	⊙		⊙	⊙
Flagstaff Memorial NR		●	●				⊙
Gillindich NR		●	●		⊙		⊙
Good Good NR		●	●	○	○	○	○
Goorooyarroo NR		●	●				⊙
Gourock NP		●	●				
Gungewalla NR		●	●			⊙	⊙
Hattons Corner NR		●	●				⊙
Illunie NR		●	●	⊙		⊙	⊙
Ironmungy NR		●	●	○			
Jindalee NP		●	●				
Jingellic NR	○	●	●		○	○	○
Keverstone NP		●	●	⊙	⊙	⊙	⊙
Keverstone SCA		●	●	⊙	⊙	⊙	⊙
Koorawatha NR		●	●	⊙		⊙	⊙
Kosciuszko NP	●	●	●	○	○	●	●
Kuma NR		●	●				○
Kybean NR - Dangelong NR	○	●	●		○	○	○
Kybeyan SCA - Dangelong NR	○	●	●	○	○	○	○
Livingstone NP		●	●			⊙	⊙

Reserve	Wild Dog	Fox	Cat	Goat	Pig	Deer	Rabbit
Livingstone SCA		●	●			⊙	⊙
Macanally SCA		●	●	○	○	○	○
McCleods NR		●	●				
Meringo NR		●	●	○	○	○	○
Merriangaah NR		●	●	○	○	○	○
Minjary NP	⊙	●	●		⊙	⊙	⊙
Mount Clifford NR		●	●	○	○	○	○
Mount Davies		●	●	⊙			⊙
Mount Dowling NR		●	●	⊙	⊙		
Mudjarn NR		●	●		⊙		⊙
Mullengandra NR	○	●	●	⊙	⊙	⊙	
Mullengandra SCA	○	●	●	⊙	⊙	⊙	
Mundoonen NR		●	●				⊙
Myalla NR		●	●				○
Nest Hill NR		●	●			○	⊙
Ngadang NR		●	●	○	○	○	○
Nimmo NR	○	●	●		○	○	○
Nuggety SCA		●	●	⊙	⊙	⊙	⊙
Numeralla NR		●	●		○		
Oak Creek NR		●	●	⊙		⊙	⊙
Oakdale NR		●	●				⊙
Paupong NR		●	●		○	○	○
Queanbeyan NR		●	●				⊙
Quidong NR		●	●	○	○	○	○
Razorback NR		●	●	⊙	⊙	⊙	⊙
Scabby Range NR	○	●	●		⊙	⊙	⊙
Scott NR		●	●			⊙	⊙
South West Woodland NR - Yeo Yeo		●	●				
Stony Creek NR		●	●				
Strike-a-Light NR		●	●	⊙	⊙		
Tabletop NR		●	●	⊙			
Tallaganda NP		●	●	⊙	⊙	⊙	
Tallaganda SCA		●	●	⊙		⊙	
Thalaba SCA		●	●				⊙
Tinderry NR		●	●	○	○	○	⊙
Tumblong R		●	●		⊙	⊙	⊙
Turallo NR		●	●				⊙
Ulandra NR		●	●		⊙	⊙	⊙
Undoo NR		●	●	○	○	○	○
Wadjan NR - Dangelong NR		●	●	○	○	○	○
Wanna Wanna NR		●	●				
Wee Jasper NR	○	●	●	⊙		⊙	
Wereboldera SCA	⊙	●	●			⊙	⊙
Wiesners Swamp NR		●	●				
Woomargama NP	○	●	●	⊙	⊙	⊙	⊙
Woomargama SCA	○	●	●	⊙	⊙	⊙	
Wullwey NR		●	●		○		○
Yanununbeyan NP		●	●				
Yanununbeyan NR		●	●				
Yanununbeyan SCA		●	●				
Yaouk NR	○	●	●				⊙
Young NR		●	●				⊙

- Denotes established widespread infestation throughout a reserve
- Denotes scattered infestation throughout a reserve
- ⊙ Denotes isolated infestation restricted to a small geographic area of a reserve (encompassing new weed incursions)

Reserve	Introduced Grasses	Serrated Tussock	Thistle	St Johns Wort	Mullein	Paterson's Curse/ Vipers Bugloss	Other Herbaceous Weeds	Broom	Sweet Briar	Blackberry	Willow	Pine	Other Non-endemic Trees/Shrubs
Bango NR													
Belmount SCA													
Benambra NP	⊙			⊙		⊙							⊙
Bendick Murrell NR			⊙										
Bimberi NR	⊙			⊙						⊙			
Binjura NR	○	○											
Black Andrew NR	⊙		⊙	⊙	⊙	⊙			⊙	○			
Bobundara NR		⊙		⊙	⊙	⊙	⊙	⊙	⊙				⊙
Bogandyera NR			⊙	⊙	⊙	⊙	⊙			⊙	⊙	⊙	
Brindabella NP	⊙		⊙	⊙		⊙	⊙		⊙	○	⊙	⊙	
Brindabella SCA			⊙	⊙		⊙			⊙	⊙			
Burnt School NR	⊙	⊙		⊙					⊙				
Burra Creek NR				⊙		⊙				⊙			
Burrinjuck NR	⊙	⊙	⊙	⊙		⊙	⊙			○		⊙	
Burwood Creek NR		⊙	⊙	⊙			⊙		⊙	⊙			
Clarkes Hill NR				⊙	⊙	⊙			⊙	⊙		⊙	
Coornartha NR	⊙	⊙		⊙	⊙	⊙							
Courabyra NR	⊙		⊙	⊙		⊙			⊙	⊙			
Cuumbeun NR	⊙		⊙	⊙	⊙		⊙		⊙	⊙		⊙	⊙
Dananbilla NR	⊙		⊙	⊙		⊙	⊙		⊙	⊙	⊙		
Dangelong NR		⊙		⊙									
Doodle Cooma Swamp	⊙		⊙			⊙	⊙						
Downfall NR				⊙						⊙		⊙	
Ellerslie NR	⊙		⊙	⊙		⊙	⊙		⊙	⊙	⊙		⊙

Reserve	Introduced Grasses	Serrated Tussock	Thistle	St Johns Wort	Mullein	Paterson's Curse/ Vipers Bugloss	Other Herbaceous Weeds	Broom	Sweet Briar	Blackberry	Willow	Pine	Other Non-endemic Trees/Shrubs
Flagstaff Memorial NR	⊙		⊙	⊙		⊙	⊙						
Gillindich NR													
Good Good NR													
Goorooyarroo NR	⊙		⊙	⊙		⊙							
Gourock NP													
Gungewalla NR						⊙	⊙						
Hattons Corner NR	⊙		⊙	⊙		⊙			⊙	⊙			
Illunie NR	⊙		⊙	⊙		⊙	⊙						⊙
Ironmungy NR		⊙							⊙		⊙		
Jindalee NP	⊙		⊙	⊙		⊙				⊙			⊙
Jingellic NR				⊙	⊙	⊙	⊙		⊙	⊙	⊙	⊙	⊙
Keverstone NP		⊙	⊙	⊙		⊙				⊙			
Keverstone SCA		⊙	⊙	⊙		⊙				⊙			
Koorawatha NR	⊙		⊙	⊙		⊙							⊙
Kosciuszko NP	○	⊙	○	○	○	○	○	⊙	○	○	○	○	○
Kuma NR	⊙	⊙	⊙	⊙	⊙	⊙	⊙						
Kybeyan NR - Dangalong NR													
Kybeyan SCA - Dangalong NR		○		⊙		⊙	⊙		⊙	⊙	⊙		
Livingstone NP	⊙		⊙	⊙		⊙	⊙						
Livingstone SCA	⊙		⊙	⊙		⊙	⊙						
Macanally SCA													
McCleods NR		⊙	⊙						⊙	⊙			⊙
Meringo NR		○		⊙	⊙				⊙				
Merriangaah NR		○		○	⊙	○	○		⊙	⊙	⊙		
Minjary NP	⊙		⊙	⊙		⊙				⊙			⊙
Mount Clifford NR		⊙			⊙								
Mount Davies		⊙											
Mount Dowling NR		⊙			⊙	⊙							

Reserve	Introduced Grasses	Serrated Tussock	Thistle	St Johns Wort	Mullein	Paterson's Curse/ Vipers Bugloss	Other Herbaceous Weeds	Broom	Sweet Briar	Blackberry	Willow	Pine	Other Non- endemic Trees/Shrubs
Mudjarn NR				⊙		⊙			⊙	⊙			
Mullengandra NR			⊙	⊙		⊙							
Mullengandra SCA			⊙	⊙		⊙							
Mundoonen NR	⊙	⊙	⊙	⊙	⊙	⊙			⊙	⊙			
Myalla NR		⊙	○								⊙		
Nest Hill NR						⊙							
Ngadang NR	⊙	⊙		○	○	○				⊙	⊙		
Nimmo NR			○		○	○							
Nuggety SCA		⊙		⊙					⊙	⊙			
Numeralla NR													
Oak Creek NR	⊙	⊙	⊙	⊙		⊙			⊙	⊙			
Oakdale NR		⊙	⊙	⊙			⊙		⊙	⊙		⊙	⊙
Paupong NR													
Queanbeyan NR	⊙	⊙	⊙	⊙	⊙	⊙			⊙	⊙		⊙	⊙
Quidong NR	○			○	○	⊙		⊙	⊙		⊙		
Razorback NR	⊙	⊙	⊙	⊙		⊙			⊙	⊙			⊙
Scabby Range NR	⊙	⊙	⊙	⊙		⊙		⊙	⊙				
Scott NR		⊙	⊙	⊙		⊙							
South West Woodland NR -Yeo Yeo	⊙		⊙	⊙		⊙	⊙			⊙			
Stony Creek NR		⊙	⊙	⊙					⊙	⊙			
Strike-a-Light NR		●							⊙	⊙			
Tabletop NR													
Tallaganda NP	⊙	⊙	⊙						⊙	⊙	⊙	⊙	⊙
Tallaganda SCA											⊙		
Thalaba SCA										⊙			
Tinderry NR		⊙	⊙	⊙	⊙	⊙	⊙		⊙	⊙	⊙		
Tumblong R				⊙		⊙	⊙						⊙
Turallo NR	⊙	⊙	⊙	⊙		⊙	⊙		⊙				⊙

Reserve	Introduced Grasses	Serrated Tussock	Thistle	St Johns Wort	Mullein	Paterson's Curse/ Vipers Bugloss	Other Herbaceous Weeds	Broom	Sweet Briar	Blackberry	Willow	Pine	Other Non- endemic Trees/Shrubs
Ulandra NR	⊙		⊙	⊙	⊙	⊙	⊙		⊙	⊙			
Undoo NR	⊙	⊙		⊙									
Wadjan NR - Dangalong NR		○											
Wanna Wanna NR				⊙					⊙	⊙			
Wee Jasper NR	⊙		⊙	⊙		⊙			⊙	⊙		⊙	
Wereboldera SCA				⊙					⊙	⊙			⊙
Wiesners Swamp NR	⊙		⊙				⊙						
Woomargama NP	⊙		⊙	⊙		⊙				⊙			⊙
Woomargama SCA			⊙	⊙		⊙							
Wullwye NR	○	⊙					○						
Yanununbeyan NP		⊙	⊙			⊙			⊙	⊙		⊙	⊙
Yanununbeyan NR		⊙											
Yanununbeyan SCA		⊙	⊙	⊙		⊙			⊙	⊙			
Yaouk NR					⊙	⊙			⊙				
Young NR			⊙										

9. Appendix – Relevant Threatened Species Recovery Actions

Common name	Scientific name	Relevant recovery actions
Invertebrates		
Golden Sun Moth	<i>Synemon plana</i>	Do not change management of sites where species exists unless changes are likely to be beneficial; Retain and protect natural grassland remnants within the known distribution of the species; Control invasions of weeds and pasture species (but be wary of the impact of herbicide use in habitat); where possible use methods that directly target weeds such as spot spraying and hand removal.
Amphibians		
Alpine Tree Frog	<i>Litoria verreauxii alpina</i>	Minimise the use of herbicides and pesticides in and adjacent to habitat; Protect breeding pools from clearing or disturbance.
Booroolong Frog	<i>Litoria booroolongensis</i>	Reduce the stocking of introduced fish in streams where the species occurs; Minimise the use of herbicides and pesticides adjacent to streams; Protect streams and streamside vegetation from disturbance by stock; Control weeds, particularly willows, and rehabilitate streamside habitats.
Green and Golden Bell Frog	<i>Litoria aurea</i>	Develop measures to control or eradicate the introduced Plague Minnow; Develop strategies to provide for the development or enhancement of frog habitat to improve reproductive success and recruitment at known sites.
Northern Corroboree Frog	<i>Pseudophryne pengilleyi</i>	Protect breeding sites from damage by pigs and horses; Control weeds in and adjacent to breeding sites.
Sloane's Froglet	<i>Crinia sloanei</i>	Reduce habitat degradation through stock management, fencing and revegetation programs.
Southern Bell Frog	<i>Litoria raniformis</i>	Remove exotic fish species from waterbodies and prevent their introduction into new waterbodies. Where Southern Bell Frogs occur in these situations, seek further advice from DEC; Eradicate pest species eg. pigs that may be degrading potential southern bell frog habitat; Prevent overgrazing of terrestrial and aquatic habitats. If possible, exclude stock from waterbodies or at least part thereof; Ensure that no chemicals eg. pesticides, defoliants, etc. enter waterbodies or are sprayed near Southern Bell Frog populations. Where spraying of aquatic weeds is required, use an appropriate chemical that is approved for use near aquatic environments, spray by hand so that the operator can look for frogs whilst they are spraying and abort the operation if any are found.
Southern Corroboree Frog	<i>Pseudophryne corroboree</i>	Protect breeding sites from damage by pigs and horses.
Spotted Tree Frog	<i>Litoria spenceri</i>	Prevent the introduction and reduce populations of non-native fish in streams where the species occurs. Protect upland streams from increased turbidity, sedimentation and pollution. Minimise the use of herbicides and pesticides near streams. Control weeds, particularly Blackberry, along suitable streams.
Reptiles		
Grassland Earless Dragon	<i>Tympanocryptis pinguicolla</i>	Undertake feral animal control programs; Retain and protect natural grassland remnants and grassland with appropriate structure within the known and former distribution of the species; Control invasions of weeds and pasture species (but be wary of the impact of herbicide use in habitat); where possible, use methods that directly target weeds, such as spot spraying and hand removal.

Common name	Scientific name	Relevant recovery actions
Little Whip Snake	<i>Suta flagellum</i>	Undertake feral animal control programs.
Marble-faced Delma	<i>Delma australis</i>	Control of vertebrate pest populations, e.g. foxes, cats and rabbits, which either prey on, or compete against this species for resources; Reduce stock intensity of, or exclude grazing in, some areas to allow regeneration of vegetation for habitat, food sources or shelter sites.
Rosenberg's Goanna	<i>Varanus rosenbergi</i>	Retain and protect heath, woodland and forest remnants within the known distribution of the species.
Striped Legless Lizard	<i>Delma impar</i>	Undertake feral animal control; Retain and protect natural grassland remnants within the known distribution of the species; Control invasions of weeds and pasture species (but be wary of the impact of herbicide use in habitat); where possible use methods that directly target weeds such as spot spraying and hand removal.
Mammals		
Broad-toothed Rat	<i>Mastacomys fuscus</i>	Control rabbits and hares; Undertake fox and feral cat control program targeting known high quality habitat and recently disturbed potential habitat; Do not use rat-traps or poisons in buildings in areas of Broad-toothed Rat habitat. Do use harm-free traps such as Elliot traps and check them daily so you can release native animals. Contact NPWS for more information; Remove stock from areas of habitat; Control exotic weeds eg., Broom at Barrington Tops.
Brush-tailed Phascogale	<i>Phascogale tapoatafa</i>	Undertake fox and feral cat control.
Brush-tailed Rock-wallaby	<i>Petrogale penicillata</i>	Undertake feral predator control around colony sites; Undertake feral goat control around colony sites.
Eastern Pygmy-possum	<i>Cercartetus nanus</i>	Control feral predators and rabbits.
Eastern Quoll	<i>Dasyurus viverrinus</i>	
Koala	<i>Phascolarctos cinereus</i>	Undertake feral predator control.
Long-nosed Potoroo	<i>Potorous tridactylus</i>	Undertake fox, feral dog and cat control programs; Protect and maintain habitat, especially dense understorey.
Mountain Pygmy-possum	<i>Burramys parvus</i>	Control foxes and feral cats in Mountain Pygmy-possum habitat; Do not use rat traps or poisons in buildings in areas of Mountain Pygmy-possum habitat; Protect habitat including hibernation sites and movement corridors from disturbance; Protect all habitat, especially potential warm-climate refugia.
Smoky Mouse	<i>Pseudomys fumeus</i>	Undertake fox, wild dog, rabbit and feral cat control programs targeting known high quality habitat and recently disturbed potential habitat.
Southern Brown Bandicoot (eastern)	<i>Isodon obesulus obesulus</i>	
Spotted-tailed Quoll	<i>Dasyurus maculatus</i>	Undertake cat and fox control using poison-baiting techniques least likely to affect quolls.
Squirrel Glider	<i>Petaurus norfolcensis</i>	
Yellow-bellied Glider	<i>Petaurus australis</i>	
Eastern Bentwing-bat	<i>Miniopterus schreibersii oceanensis</i>	Control foxes and feral cats around roosting sites, particularly maternity caves; Minimise the use of pesticides in foraging areas; Protect roosting sites from damage or disturbance.

Common name	Scientific name	Relevant recovery actions
Eastern False Pipistrelle	<i>Falsistrellus tasmaniensis</i>	Minimise the use of pesticides within or adjacent to areas where insectivorous bats occur; Protect roost sites from disturbance.
Eastern Freetail-bat	<i>Mormopterus norfolkensis</i>	Minimise the use of pesticides in foraging areas.
Greater Long-eared Bat	<i>Nyctophilus timoriensis</i> (South-eastern)	Minimise the use of pesticides in and adjacent to foraging areas; Protect roosts from damage or disturbance.
Southern Myotis	<i>Myotis macropus</i>	Minimise the use of pesticides adjacent to foraging areas; Protect roosts from damage or disturbance.
Yellow-bellied Sheath-tail-bat	<i>Saccolaimus flaviventris</i>	Reduce the use of pesticides in the environment; Encourage regeneration and replanting of local flora species to maintain bat foraging habitat.
Birds		
Barking Owl	<i>Ninox connivens</i>	
Black-chinned Honeyeater (eastern su)	<i>Melithreptus gularis gularis</i>	
Blue-billed Duck	<i>Oxyura australis</i>	Make sure pesticides and herbicides are kept well away from wetlands.
Brolga	<i>Grus rubicunda</i>	
Brown Treecreeper	<i>Climacteris picumnus</i>	
Brown Treecreeper (eastern subspecies)	<i>Climacteris picumnus victoriae</i>	
Diamond Firetail	<i>Stagonopleura guttata</i>	Control weeds in areas of known habitat, especially the exotic, winter-fruiting shrubs such as cotoneasters, hawthorns, firethorns and privets that support Pied Currawongs.
Flame Robin	<i>Petroica phoenicea</i>	Enhance potential habitat through regeneration by reducing the intensity and duration of grazing; Avoid the use of exotic berry-producing shrubs in landscape and garden plantings in areas adjacent to Flame Robin habitats.
Freckled Duck	<i>Stictonetta naevosa</i>	Retain and protect wetlands and maintain a natural density of riparian and wetland vegetation.
Gang-gang Cockatoo	<i>Callocephalon fimbriatum</i>	
Glossy Black-Cockatoo	<i>Calyptorhynchus lathami</i>	
Grey-crowned Babbler (eastern subspe)	<i>Pomatostomus temporalis temporalis</i>	
Hooded Robin	<i>Melanodryas cucullata</i>	
Little Eagle	<i>Hieraaetus morphnoides</i>	
Little Lorikeet	<i>Glossopsitta pusilla</i>	Reduce the abundance of feral Honeybees and limit the exploitation of nectar by domestic bees where resources are spatially or temporally sparse (e.g. in years of drought).
Masked Owl	<i>Tyto novaehollandiae</i>	Limit the use of pesticides used in suitable native habitat.
Olive Whistler	<i>Pachycephala olivacea</i>	Undertake fox and feral cat control programs.

Common name	Scientific name	Relevant recovery actions
Orange-bellied Parrot	<i>Neophema chrysogaster</i>	Undertake fox, wild dog and feral cat control program targeting known high quality habitat. Secure known foraging habitats from overgrazing, predators and competitors.
Painted Honeyeater	<i>Grantiella picta</i>	Manage grazing on sites where Painted Honeyeater habitat occurs.
Painted Snipe (Australian subspecies)	<i>Rostratula benghalensis australis</i>	Control foxes, feral dogs and cats; Limit the use of pesticides and other chemicals near wetlands and consider alternatives where available.
Pink Robin	<i>Petroica rodinogaster</i>	
Powerful Owl	<i>Ninox strenua</i>	
Regent Honeyeater	<i>Anthochaera phrygia</i>	Protect and enhance key breeding and foraging habitats.
Scarlet Robin	<i>Petroica boodang</i>	Enhance potential habitat through regeneration by reducing the intensity and duration of grazing; Avoid the use of exotic berry-producing shrubs in landscape and garden plantings in areas adjacent to Scarlet Robin habitats.
Sooty Owl	<i>Tyto tenebricosa</i>	Limit the use of pesticides used in suitable native habitat.
Speckled Warbler	<i>Pyrrholaemus sagittatus</i>	Undertake fox and feral cat control programs.;
Spotted Harrier	<i>Circus assimilis</i>	Protect areas of habitat from overgrazing.
Square-tailed Kite	<i>Lophoictinia isura</i>	
Superb Parrot	<i>Polytelis swainsonii</i>	Remove feral bee colonies from hollows in Superb Parrot habitat, or report them to NPWS officers.
Swift Parrot	<i>Lathamus discolor</i>	Revegetate with winter-flowering tree species where appropriate.
Turquoise Parrot	<i>Neophema pulchella</i>	Undertake fox and feral cat control programs in key habitat areas; Protect sites where Turquoise Parrots forage and nest from heavy, prolonged grazing.
Varied Sittella	<i>Daphoenositta chrysoptera</i>	Control weeds in areas of known habitat.
White-fronted Chat	<i>Epthianura albifrons</i>	
Endangered Ecological Communities		
Box-gum woodland		Undertake control of rabbits, hares, foxes, pigs and goats (using methods that do not disturb the native plants and animals of the remnant); Undertake weed control (taking care to spray or dig out only target species).
Montane Peatlands and Swamps		Instigate pig, deer and goat control programs; Control access of domestic stock to the community by installing fencing; Undertake weed control as required using removal methods that will not damage the community; Restore natural drainage conditions.

Common name	Scientific name	Relevant recovery actions
Natural Temperate Grasslands		Undertake control of rabbits, hares, foxes, pigs and goats (using methods that do not disturb the native plants and animals of the remnant); Manage stock to reduce grazing pressure in high quality remnants (i.e. those with high flora diversity or fauna habitat); time grazing so as not to affect the seeding of sensitive plants, or when fauna species are not vulnerable; Modified remnants have a capacity for natural or assisted rehabilitation; an essential for rehabilitation is to reduce grazing pressure; native plant diversity can then be enhanced by one or more of the following methods: allowing natural dispersal of seeds from outside the site; activation of the site's soil seed bank (particular disturbance regimes may be applied); or the deliberate introduction of locally-indigenous species; Undertake weed control (taking care to spray or dig out only target species).
Tablelands Snow-gum		Threats are trampling and grazing by domestic livestock and weed invasion.
Plants		
Anemone Buttercup	<i>Ranunculus anemoneus</i>	Control horses and rabbits from habitat when required.
Archer's Carex	<i>Carex archeri</i>	Remove feral horses from suitable habitat.
Austral Pillwort	<i>Pilularia novae-hollandiae</i>	Avoid changing land-use and hydrology where Austral Pillwort persists.
Austral Toadflax	<i>Thesium australe</i>	Do not increase grazing pressures on sites where populations persist - reduce grazing pressures where possible; Undertake weed control in and adjacent to populations, taking care to spray or dig out only target weeds.
Black Gum	<i>Eucalyptus aggregata</i>	Fence out mature stands to reduce or eliminate grazing pressures and to allow regeneration; Control weeds that inhibit regeneration.
Blue-tongued Greenhood	<i>Pterostylis oreophila</i>	Fence populations to prevent grazing and trampling by cattle and wild horses; Fence populations to prevent rooting by feral pigs.
Button Wrinklewort	<i>Rutidosis leptorrhynchoides</i>	Do not increase grazing pressures on sites where populations persist - reduce grazing pressures where possible; Undertake weed control in and adjacent to populations, taking care to spray or dig out only target weeds.
Cotoneaster Pomaderris	<i>Pomaderris cotoneaster</i>	
Creeping Hop-bush	<i>Dodonaea procumbens</i>	Do not increase grazing pressures on sites where populations persist - reduce grazing pressures where possible; Undertake weed control in and adjacent to populations, taking care to spray or dig out only target weeds.
Elusive Cress	<i>Irenepharsus magicus</i>	May be threatened by inadvertent weed spraying because it looks like a weed and grows in weedy sites.
Feldmark Grass	<i>Rytidosperma pumilum</i>	
Kiandra Leek Orchid	<i>Prasophyllum retroflexum</i>	Undertake pig control.
Kydra Dampiera	<i>Dampiera fusca</i>	Monitor browsing by rabbits and goats and initiate control programs if browsing levels become high.
Kydra Westringia	<i>Westringia kydrensis</i>	Control goats if they are found to browse on Kydra Westringia plants.
Leafy Anchor Plant	<i>Discaria nitida</i>	Monitor and control woody weeds as required.

Common name	Scientific name	Relevant recovery actions
Mauve Burr-daisy	<i>Calotis glandulosa</i>	Undertake pig control in areas that surround populations; Do not increase grazing pressures on sites where populations persist - reduce grazing pressures where possible; Undertake weed control in and adjacent to populations, taking care to spray or dig out only target weeds.
Max Mueller's Burr-daisy	<i>Calotis pubescens</i>	Undertake pig control.
Michelago Parrot-pea	<i>Dillwynia glaucula</i>	Limit grazing on sites; Control threatening weeds where necessary; Avoid spraying weeds close to plants to ensure they are not impacted by poison; Mark sites and potential habitat onto maps used for planning weed spraying work.
Monaro Golden Daisy	<i>Rutidosia leiolepis</i>	Undertake pig control in areas that surround populations; Do not increase grazing pressures on sites where populations persist - reduce grazing pressures where possible; Exclude grazing stock from known areas of habitat by fencing; Undertake weed control in and adjacent to populations, taking care to spray or dig out only target weeds.
Pale Golden Moths	<i>Diuris ochroma</i>	Assist in the control of weeds in areas of habitat; Implement pig control programs to protect sites.
Pale Pomaderris	<i>Pomaderris pallida</i>	Negotiate with landowners of Queanbeyan River population to ensure habitat protection and weed control that doesn't impact on Pale Pomaderris plants; Control goats at Kydra.
Pine Donkey Orchid	<i>Diuris tricolor</i>	
Raleigh Sedge	<i>Carex raleighii</i>	Undertake pig and wild horse control in the vicinity of sites; Restrict trampling by stock of wetland vegetation where Raleigh Sedge has been recorded.
Rough Eyebright	<i>Euphrasia scabra</i>	Undertake pig and deer control; Damage to or changes in hydrology of swampy vegetation must be avoided; All vegetation within 200 m of swamps supporting the species should be retained and not disturbed; Fence the populations to exclude stock and vehicles; otherwise limit movement through the populations; Undertake weed control where required. Avoid spraying weeds close to Rough Eyebright to ensure they are not impacted by poison.
Shining Cudweed	<i>Euchiton nitidulus</i>	Undertake horse control in areas containing Shining Cudweed.
Silver-leafed Gum	<i>Eucalyptus pulverulenta</i>	Encourage regeneration by fencing remnants, controlling stock grazing and undertaking supplementary planting or direct sowing of this species, if necessary.
Small Snake Orchid	<i>Diuris pedunculata</i>	Assist with the control of feral pigs in habitat areas; Protect known populations and habitat areas from grazing stock; Assist with the control of weeds in habitat areas.
Small-leaved Gum	<i>Eucalyptus parvula</i>	Exclude grazing from stands of Small-leaved Gum until seedlings are large enough to be immune from grazing.
Suggan Buggan Mallee	<i>Eucalyptus saxatilis</i>	
Tumut Grevillea	<i>Grevillea wilkinsonii</i>	Eliminate grazing on sites where populations occur, fencing is appropriate; Undertake weed control in and adjacent to populations, taking care to spray or dig out only target weeds.
Wee Jasper Grevillea	<i>Grevillea iaspicula</i>	Eliminate browsing by goats and grazing by stock on sites where populations occur, fencing is appropriate; Undertake weed control in and adjacent to populations, taking care to spray or dig out only target weeds.
Woolly Ragwort	<i>Senecio garlandii</i>	

Common name	Scientific name	Relevant recovery actions
Yass Daisy	<i>Ammobium craspedioides</i>	Do not increase grazing pressures on sites where populations persist - reduce grazing pressures where possible; Undertake weed control in and adjacent to populations, taking care to spray or dig out only target weeds.
	<i>Acacia kydrensis</i>	
	<i>Acacia phasmoides</i>	Maintain control measures on feral grazing species in the vicinity of the known populations;
	<i>Haloragis exalata</i> subsp. <i>exalata</i> var.	Conduct surveys for this species as part of weed control programs in the vicinity of known populations.
	<i>Rytidosperma vickeryae</i>	