

YETI Vegetation Survey Database

Installation notes

29 November 2009

This document provides instructions for a user to connect their version of the vegetation survey database to a SQL Server back-end. It has been written with DECCW users in mind. However, it can guide other users using a SQL Server installation.

Database files and directories

In the SQL Server version of the application, the database consists of a *front-end* (ie. the user interface with screen dialogs, search and reporting functions etc.) in MS Access while the data resides in the SQL Server *back-end* (data tables).

File list

You should have the following files for the complete database distribution:

1. **Front-end file: survey_3_2.mdb**
This contains the forms (i.e. screen dialogs), tables, queries and Visual Basic code for the user interface.
2. **Site Summary template files: Site Summary Page 1.doc, Site Summary Page 2.doc**
3. **Field Sheet template file: Field Sheets V16.doc**

Directory structure for the database

To install the database to access the vegetation survey data archive in SQL Server create a directory for the front-end on each computer (e.g. C:\data\VegSurveyDB)

Create a sub-directory (e.g. C:\data\VegSurveyDB\Graphics) to store Graphics and another sub-directory (e.g. C:\data\VegSurveyDB\Templates) to store Site templates

Installation procedure

Copying files

Copy the front-end file **survey_3_2.mdb** into the main database directory (e.g. C:\data\VegSurveyDB) on the stand-alone computer or each networked computer.

NB: If you have copied files from a distribution CD, check the file properties to ensure they are not *read-only* otherwise the database will not function correctly. Right-click on the files in the Explorer and select Properties from the menu. Clear the read-only checkbox if it is ticked.

Copy the files Site Summary Page1.doc, Site Summary Page 2.doc and Field Sheets V16.doc to the Templates sub-directory.

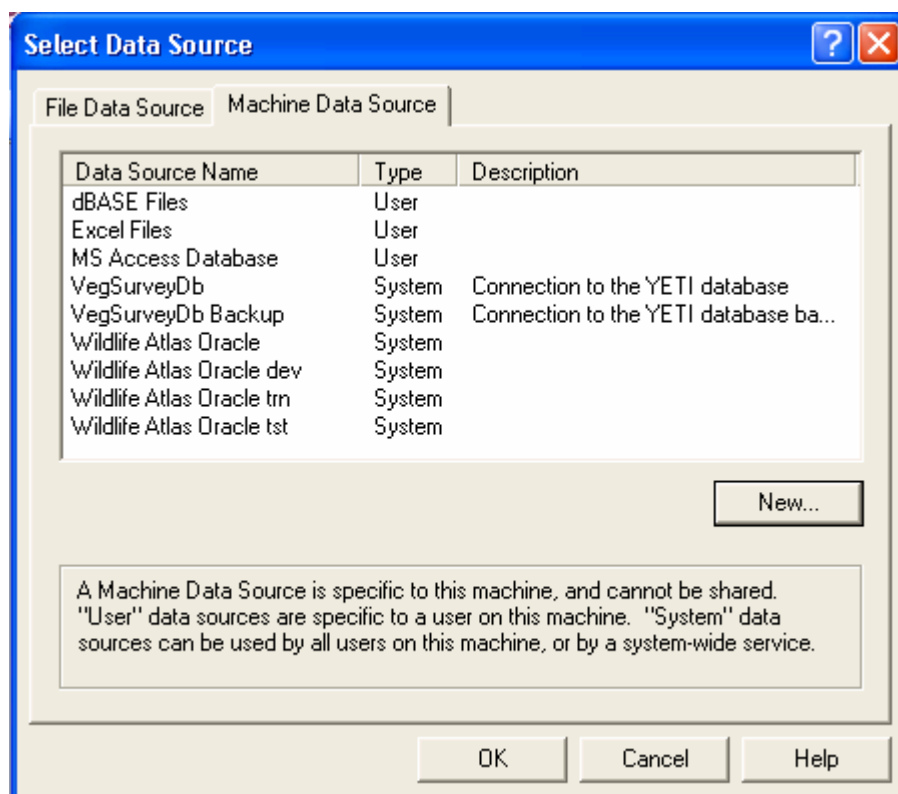
Running the database and linking the back-end files

You can start the database by double-clicking the **survey_3_2.mdb** file in the Explorer. For convenience you can create a short-cut to the database on your desktop or in your programs directory. The target of the short-cut is just the file **survey_3_2.mdb**.

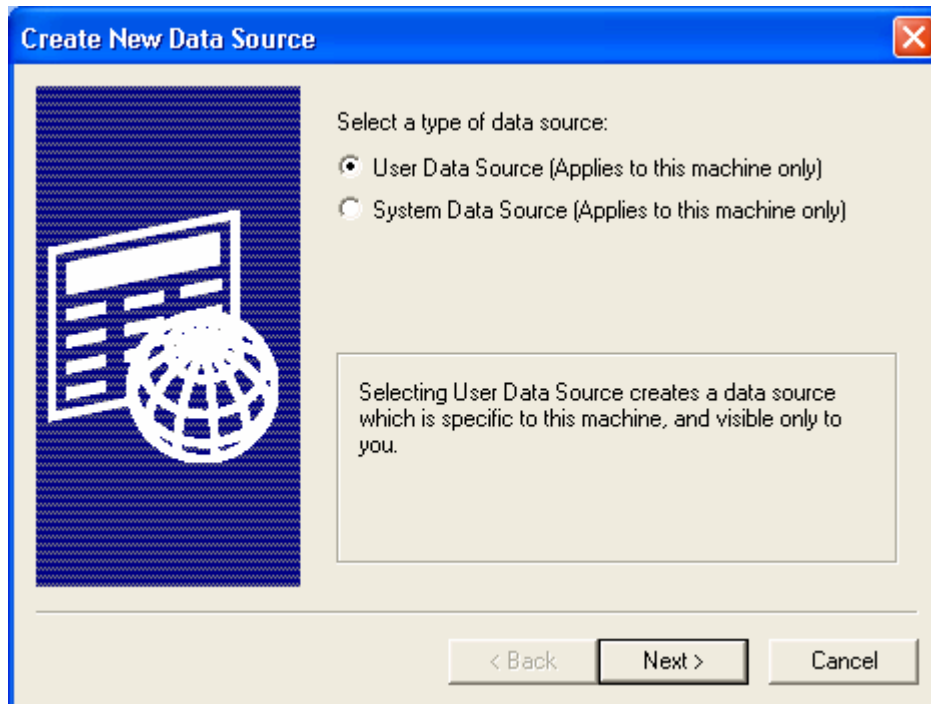
When you start the database for the first time you will probably be prompted for the location of files that contain the back-end database tables.

To connect to the SQL Server database click on the button marked ODBC. This will open the ODBC data source manager. If you do not have an ODBC data source for the server already set up you will have to make one, otherwise you can select it from the list of data sources on the Machine Data Source Tab.

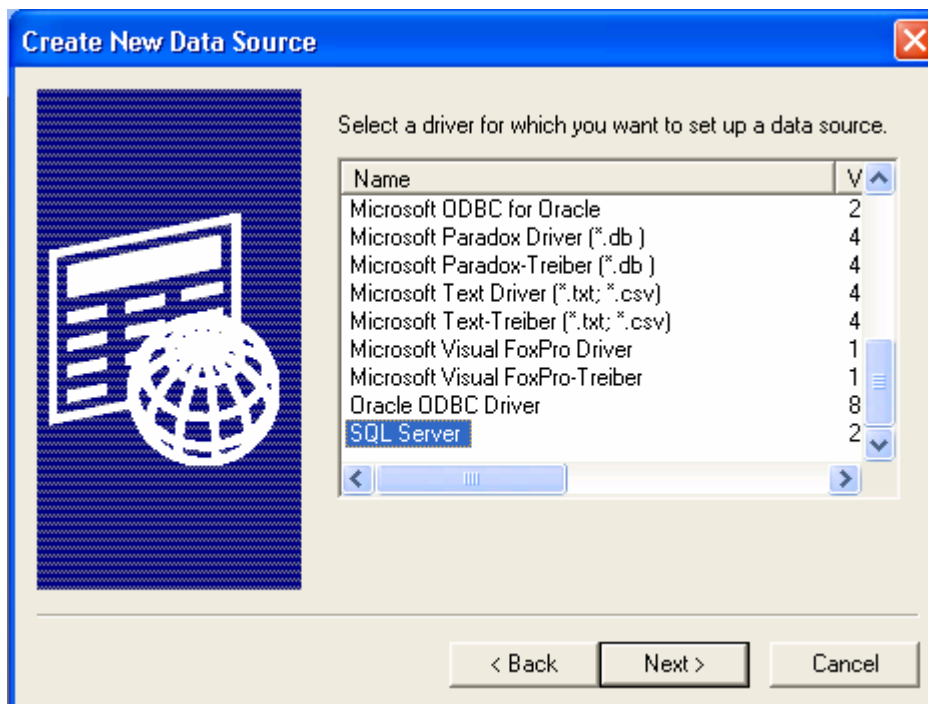
1. To create a new data source, click New...



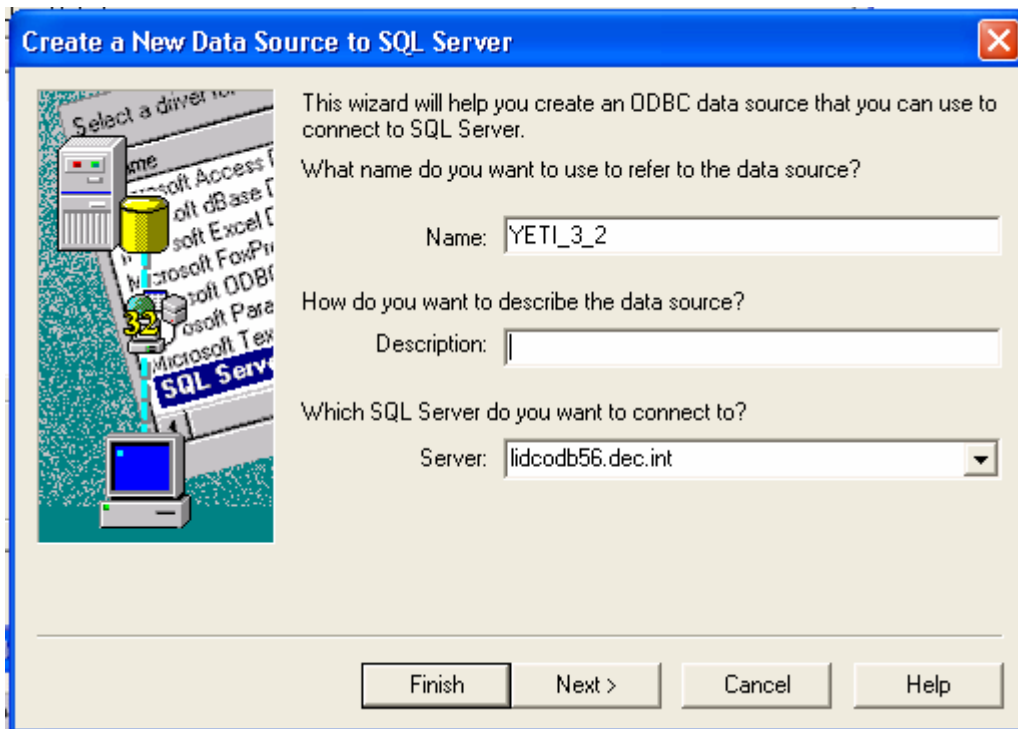
2. Select a User Data Source (Users on the DECCW network cannot create System Data Sources) and then Next



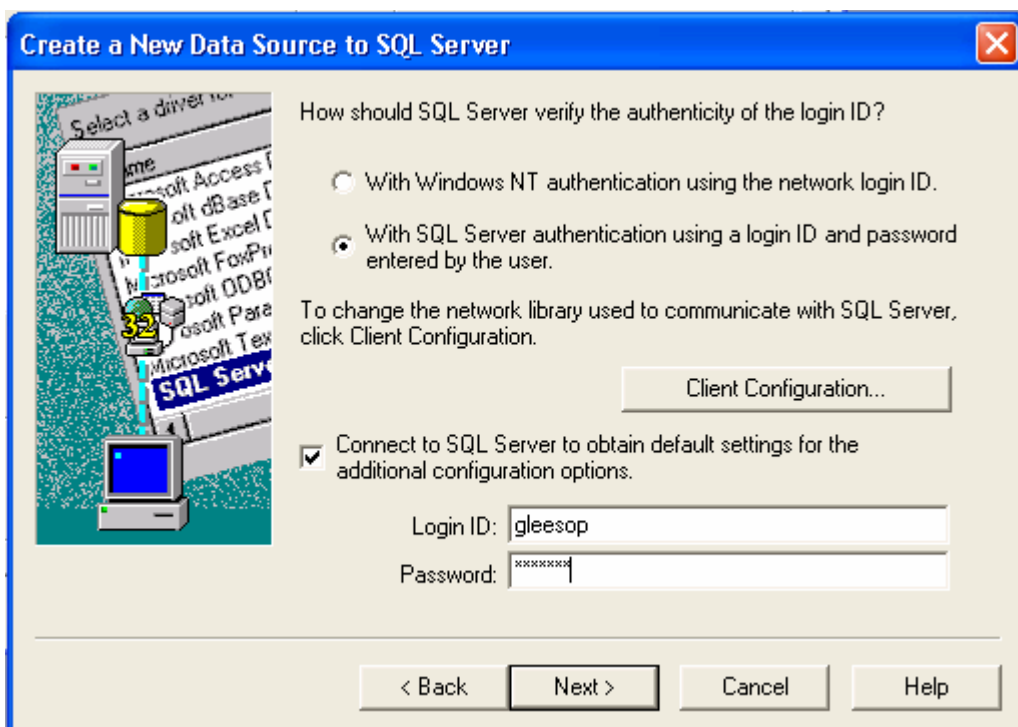
3. Select the driver SQL Server and Next and then Finish



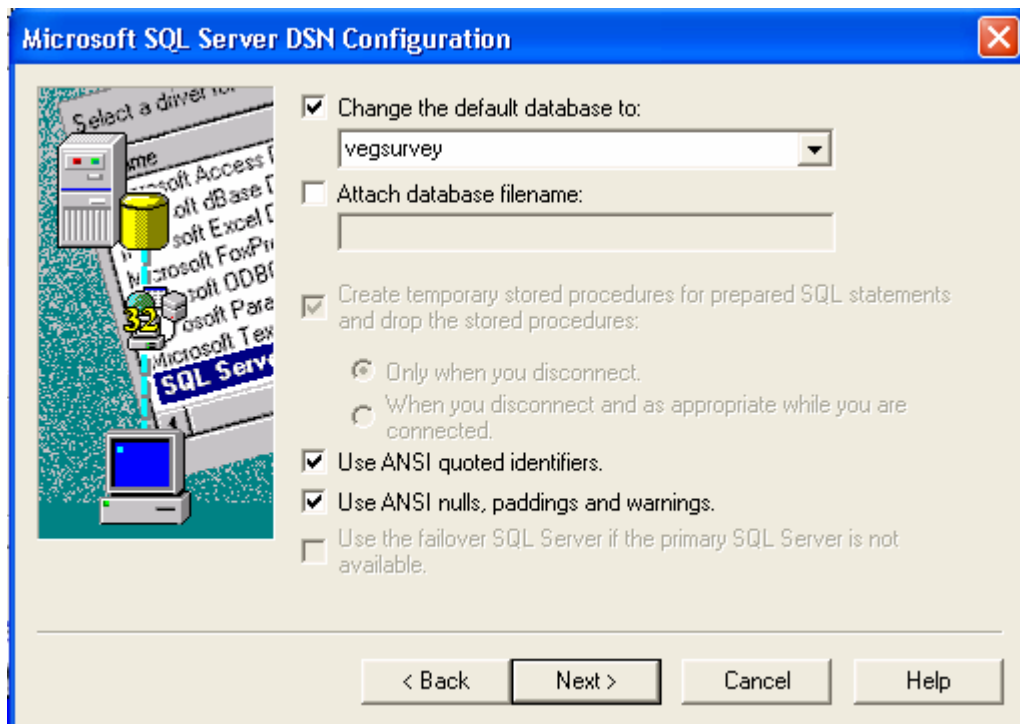
4. Choose a Name and Server for your DNS (Description is optional) and click Next



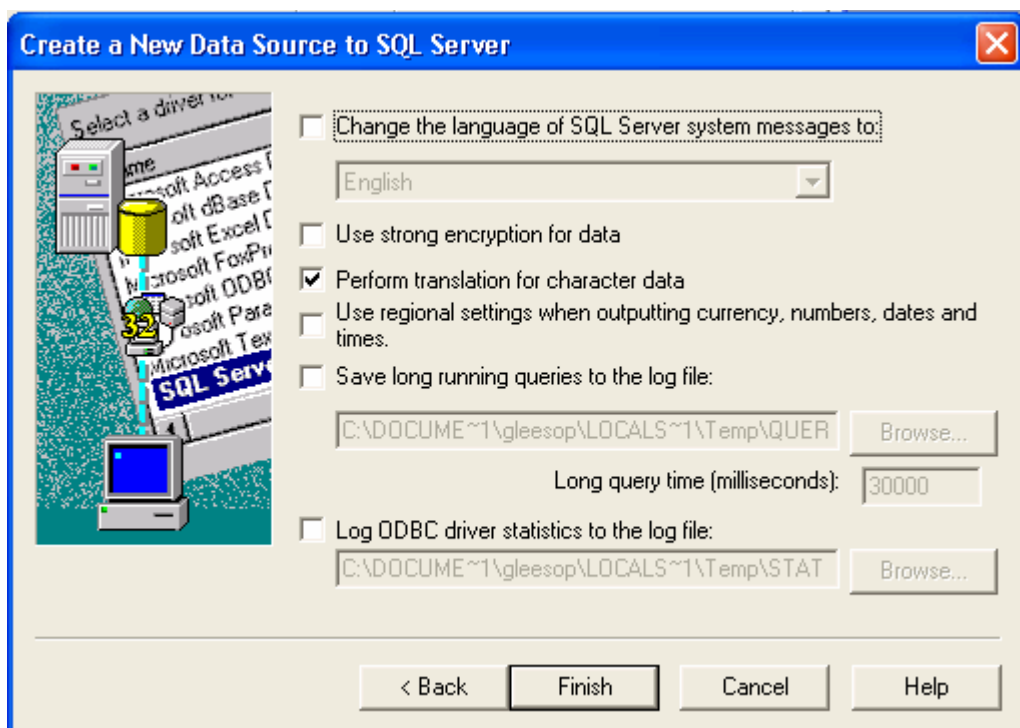
5. Select the option SQL Server authentication using a login ID and password entered by the user (Windows NT authentication is not available in DEC)
6. Type in your log in and password and click Next



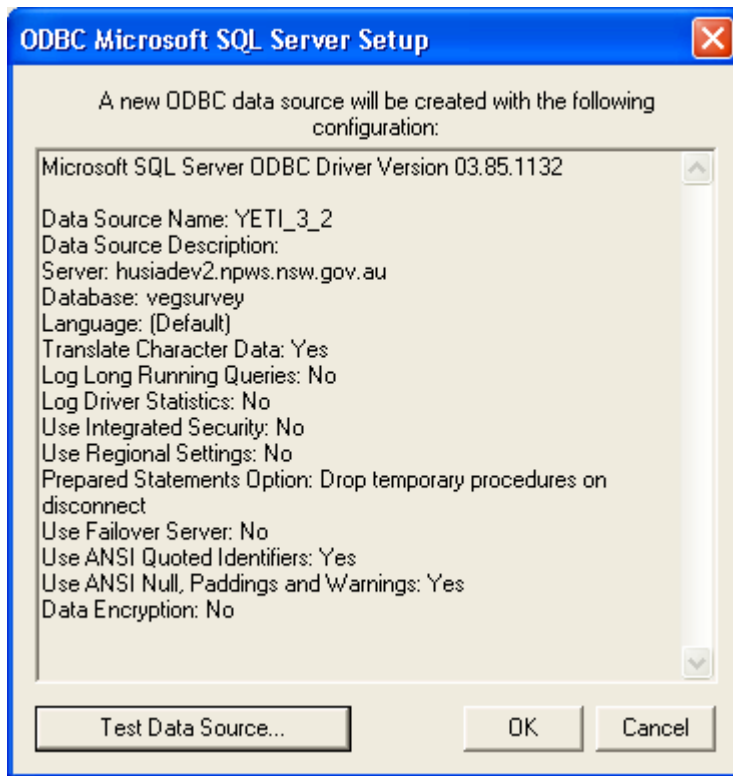
7. Tick the box Change the default database to: and make sure you are linked to vegsurvey then click Next



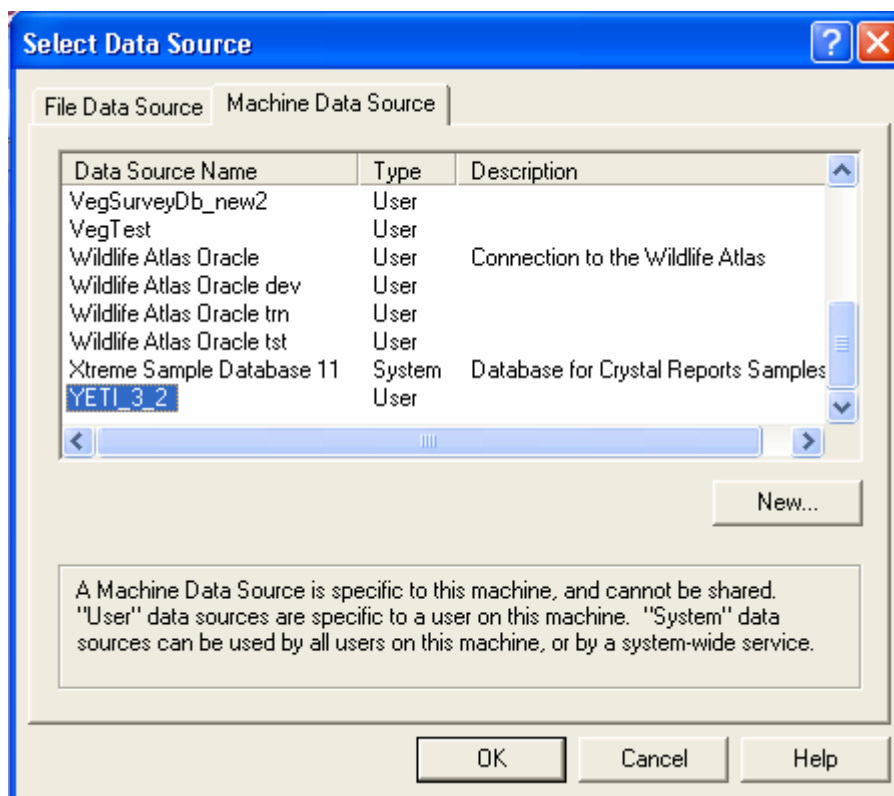
8. Click Finish



9. Click Test Data Source to ensure everything is OK



10. Finally Click OK and then select your newly created data source from the list and then click OK



11. You will be asked to login again and the database will check links to all the files.
12. Lastly, as the graphics files are not stored in the SQL Server backend, the database will ask you where the graphics files are located. Browse to the folder and click OK
13. You should nominate the folder where you should have stored the Site Summary templates. If they are not there already, copy them to this folder.
14. If there has been no problems you can close the Database Settings dialog and commence using the database. Note that you will only have to create the DSN once, the next time you open your database you will simply be prompted for username and password.

Where to get help, complain, sing its praises etc.

You can contact the Department on vis@environment.nsw.gov.au