



Office of
Environment
& Heritage

Saving our Species

Together we can secure threatened species in NSW

You are invited to participate in *Saving our Species*, the NSW Government program to better manage threatened species in NSW. With its innovative method of developing projects to meet the needs of threatened plants and animals, the program complements the excellent conservation work many people are already undertaking.

Saving our Species can only succeed if we work together. We need your help to ensure that today's actions help to secure NSW threatened species for the future.



Visit www.environment.nsw.gov.au/savingourspecies

Facts about our threatened species

Many species in NSW are on the decline, and many are verging on extinction.

967

species are currently listed as threatened in NSW under the *Threatened Species Conservation Act 1995*.

Of these:

72

species or approximately **7%** are presumed extinct

67

species or approximately **7%** are critically endangered

428

species or approximately **44%** are endangered

400

species or approximately **41%** are vulnerable

654

species or approximately **68%** are plants

313

species or approximately **32%** are animals.



The conservation project to save the eastern bristlebird is one of the first to be implemented under *Saving our Species*.
J. Young

Why *Saving our Species* lives up to its name

Saving our Species differs from previous programs in that it:

- allocates all threatened species to one of six management streams that identify the types of actions required for each species
- provides targeted conservation projects that set out the actions required to save specific plants and animals on mapped management sites
- prioritises projects based on their benefit to the species, feasibility and cost, to help decision-makers and investors make the most effective investments in threatened species conservation
- regularly monitors the effectiveness of projects so they can be improved over time
- encourages community, corporate and government participation in threatened species conservation by providing a website and a database with information on project sites, volunteering and research opportunities.

This is a disturbing trend, but we do not need to accept it. By working together, almost all threatened species in NSW can be saved.

How does *Saving our Species* work?

Under *Saving our Species*, threatened species in NSW are allocated to one of six management streams according to their distribution and ecology, and how much we know about them. Targeted actions are being developed for each species in each stream.

At this stage, *Saving our Species* is focusing on species in the site-managed, iconic and data-deficient streams, since the species in the other streams are largely managed under other programs or occur mainly in other states and territories, and some species are not under immediate threat.



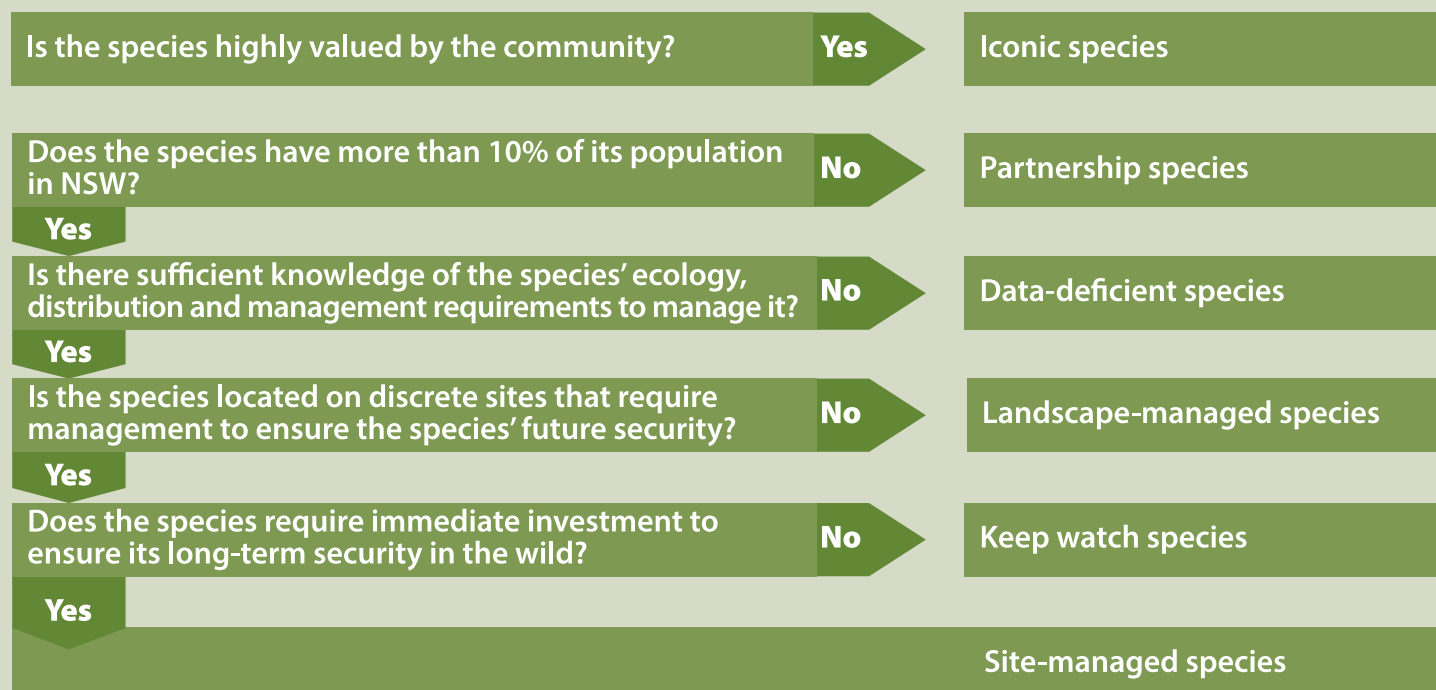
Volunteers play an important role in the success of *Saving our Species*. S. Cohen



Phebalium bifidum flowers. D. Coote/OEH

Allocating threatened species to management streams

The diagram below outlines the way in which species are allocated to a management stream. Allocations may change over time as new information on species becomes available.



Visit www.environment.nsw.gov.au/savingourspecies

The six management streams

Site-managed species. There are 405 or 42% of threatened species in this management stream, including the smoky mouse, eastern bristlebird and granite rose. These species can be successfully secured by carrying out targeted conservation projects on specific sites around NSW, and we welcome your involvement.

Conservation projects each consist of management actions – for example weeding, erosion control and revegetation – and monitoring actions which measure the success of management actions in increasing the health and numbers of a species and its habitat.



Iconic species. There are four iconic threatened species: the koala, brush-tailed rock wallaby, malleefowl and southern corroboree frog. These species are especially valued by the community. Other valued species will be added to this stream in the future.

Iconic species projects have been prepared based on actions in existing recovery plans. These actions are similar to management actions for site-managed projects, though conducted on a broader scale, and we welcome your involvement.

Working together to save site-managed species. The yellow spotted bell frog is critically endangered in NSW. It lives along riverbanks in the southern tablelands. This frog can be secured through:

- landholders fencing riparian areas on key sites to control grazing during winter
- working with local conservation groups and local councils to manage weeds and create new habitat on key sites.

Taronga Zoo also has a captive breeding program for this species, and frogs from the program will be used to establish new wild populations.



Data-deficient species. There are 180 or 19% of threatened species in this management stream, including Sloane's froglet, finger panic grass and the matted bush-pea.

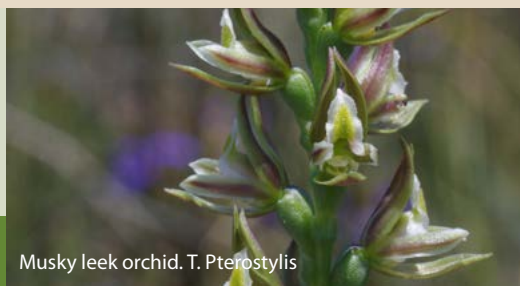
There is insufficient information on these species to allocate them to another management stream. Species action statements have been prepared outlining research and survey actions to be undertaken before an appropriate management approach can be developed. Research organisations and field naturalist groups are invited to research and fill the knowledge gaps for these species.

Landscape-managed species. There are 132 or 14% of threatened species in this management stream, including the green-thighed frog, pale-headed snake, yellow-bellied glider and giant dragonfly. These species are distributed across large areas and threatened across the landscape by habitat loss and degradation. They can be managed by, for example, control of vegetation clearing or through management of national parks and reserves.



Partnership species There are 151 or 16% of threatened species in this management stream. These species have less than 10% of their distribution in NSW. Some are common in other states or territories, although not in NSW. Species that are threatened nationally and have important populations in NSW will have conservation projects developed for them.

Keep watch species There are 95 or 10% of threatened species in this management stream, including Hall's babbler and the spiny mintbush. These species require no immediate investment because they are either naturally rare, have few critical threats, or are more abundant than previously assumed. OEH staff will keep a watching brief on these species.



NB New threatened species are continually being listed in the *Threatened Species Conservation Act 1995*. The number of threatened species listed here was current as at November 2013.

Musky leek orchid. T. Pterostylis

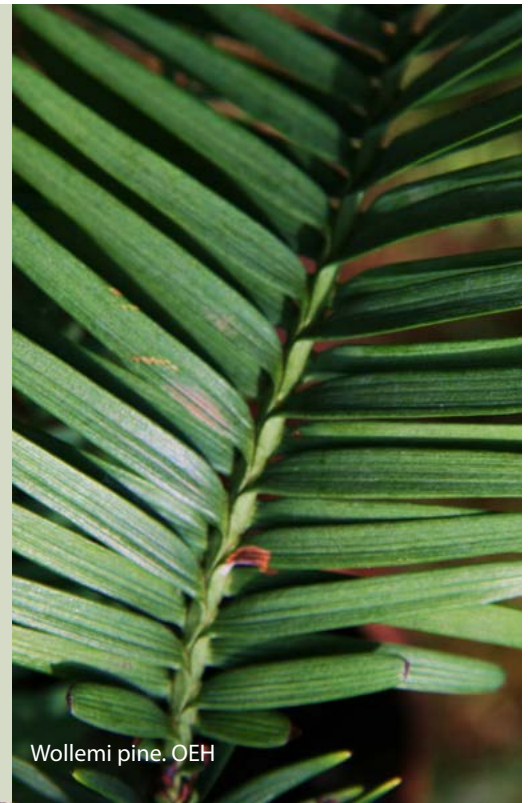
How are we prioritising efforts?

The objective is to secure all threatened species in the wild for 100 years. This will not necessarily mean all populations throughout NSW will be managed. The essential actions at the required number of sites to secure a species will be undertaken, then resources will be directed to other threatened species. As the program grows and investment increases, more species can be secured.

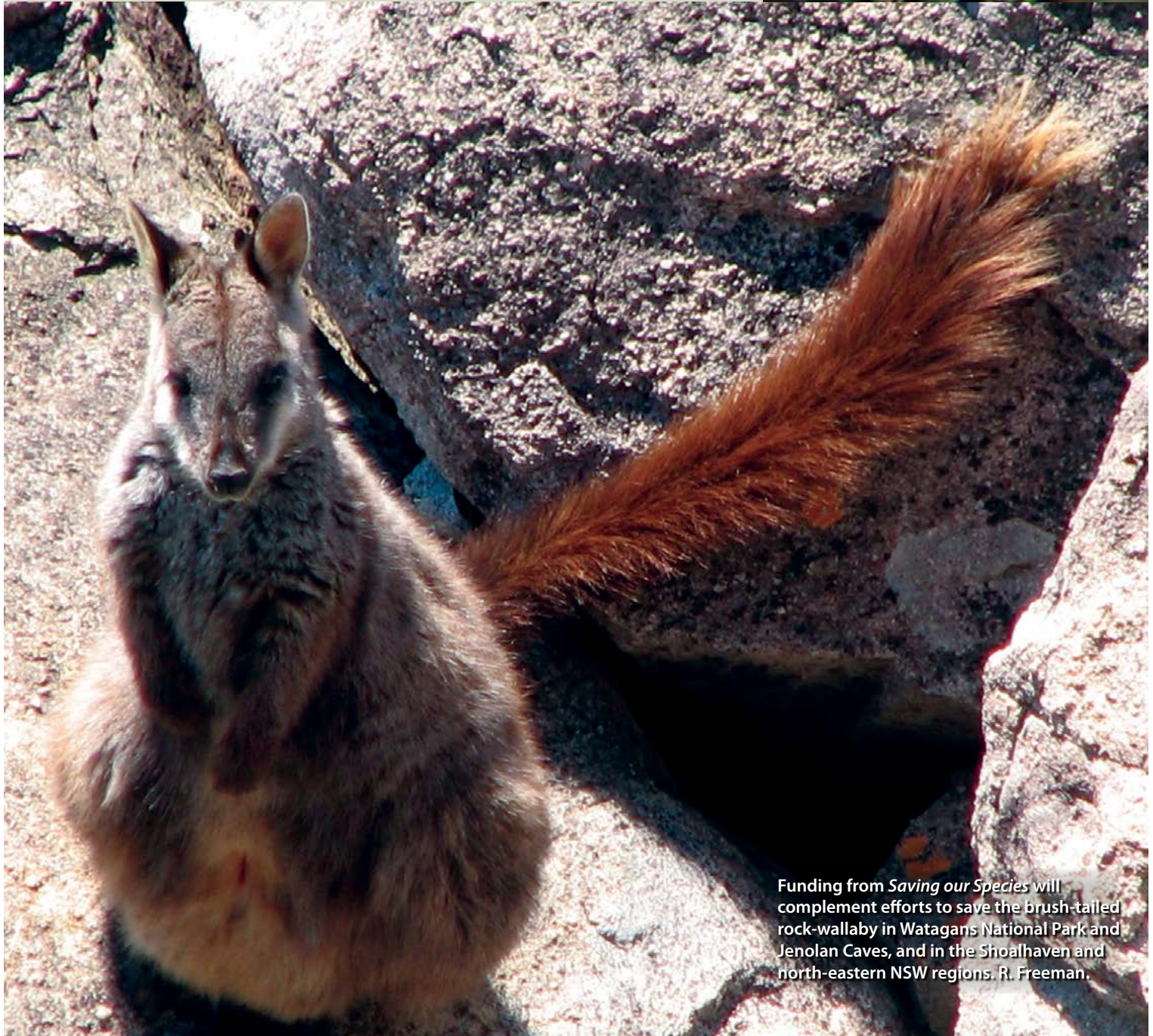
For the site-managed species stream, conservation projects have been prioritised based on the benefit the project will provide to the species, its likelihood of success, and its total cost.

All projects for iconic species will be undertaken as these species are highly valued by the community.

In the case of the data-deficient species management stream, investment in species will be guided by the feasibility of filling the knowledge gaps and the conservation status of the species. It is unlikely that there will be investment in species that are presumed to be extinct except where these species are rediscovered in NSW.



Wollemi pine. OEH



Funding from *Saving our Species* will complement efforts to save the brush-tailed rock-wallaby in Watagans National Park and Jenolan Caves, and in the Shoalhaven and north-eastern NSW regions. R. Freeman.

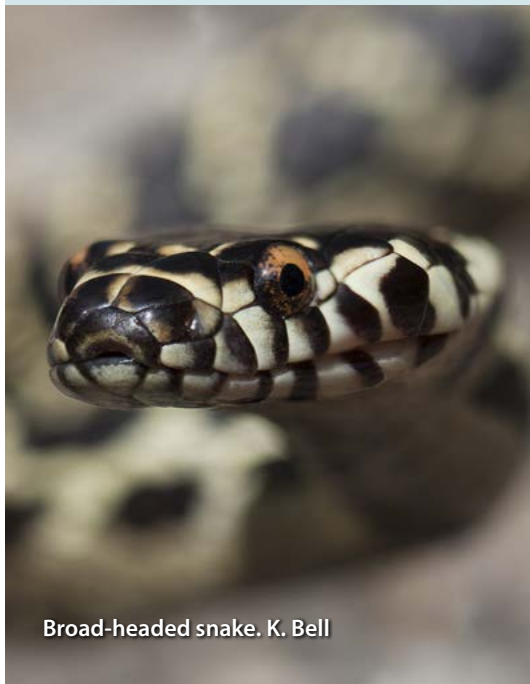
How can people get involved?

There are lots of ways in which you can support the massive effort of *Saving our Species*. Visit www.environment.nsw.gov.au/savingourspecies to:

- learn more about threatened species
- search for threatened species or projects in your local area
- tell us more about the projects you or your group are doing
- subscribe to regular newsletters updating you on the program.

If you are already working in threatened species conservation, become a *Saving our Species* registered user. Share information on your activities and track the progress of your project on the website.

Visit www.environment.nsw.gov.au/savingourspecies



Broad-headed snake. K. Bell

Cover photo: Red-legged pademelon. J. Otto.

Published by:

Office of Environment and Heritage,
59 Goulburn St, Sydney NSW 2000;
PO Box A290, Sydney South 1232

Phone: (02) 9995 5000 (switchboard)
131 555 (environment information and
publications requests)
1300 361 967 (national parks, climate change
and energy efficiency information, and
publications requests)

Fax: (02) 9995 5999

TTY users: phone 133 677, then ask for 131 555

Speak and listen users: phone 1300 555 727,
then ask for 131 555

Email: info@environment.nsw.gov.au

Website: www.environment.nsw.gov.au

OEH 2013/0376
ISBN 978 1 74359 122 2
December 2013



Working to save the threatened *Grevillea wilkinsonii* in the Australian Alps. J. Briggs