

Help save the Bellinger River Snapping Turtle (*Myuchelys georgesi*)

Conservation status in NSW: Critically Endangered

Commonwealth status: Critically Endangered

Saving our Species management stream: Site-managed species

Species profile:

<http://www.environment.nsw.gov.au/threatenedspeciesapp/profile.aspx?id=20301>

Saving our Species aims to conserve as many threatened species as possible. This conservation project aims to conserve the Bellinger River Snapping Turtle in the long-term. The project was developed by experts who identified the minimum number of necessary management sites and conservation actions required to conserve the species.

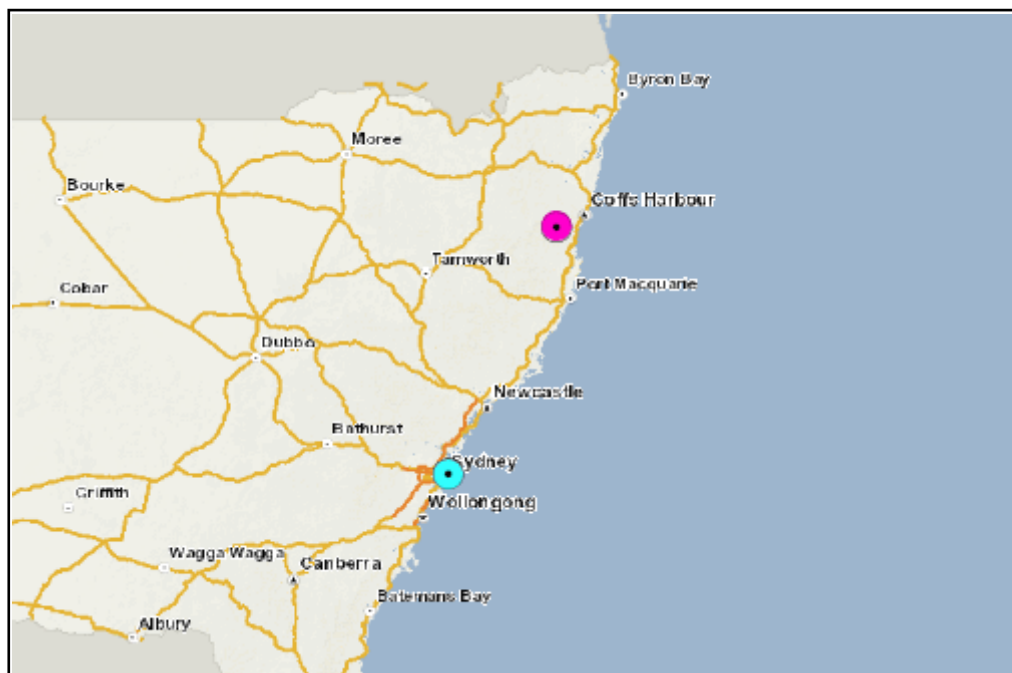
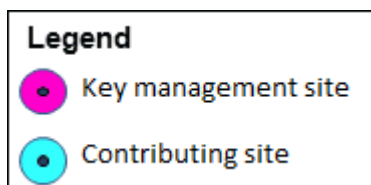
Three key management sites have been identified in NSW (ordered north to south). They are:

- Bellinger Drainage Area in Armidale Dumaresq; Bellingen; Clarence Valley; Coffs Harbour; Kempsey; Nambucca LGAs
- Taronga Zoo in Mosman; Sydney Harbour And Botany Bay (Unincorporated) LGAs
- Australian Registry of Wildlife Health in Mosman; Sydney Harbour And Botany Bay (Unincorporated) LGAs

More information about each site is provided on the following pages.

All conservation work being undertaken to conserve the Bellinger River Snapping Turtle around the state is vital to its recovery. If you are working on one of the sites identified in this conservation project, or on a site elsewhere, please contact us at www.environment.nsw.gov.au/savingourspecies/contactus.htm

Map of Bellinger River Snapping Turtle key management sites



Site 1: Bellinger Drainage Area

Bellinger River, Kalang River and associated tributaries.

Total site area (ha): 111,934

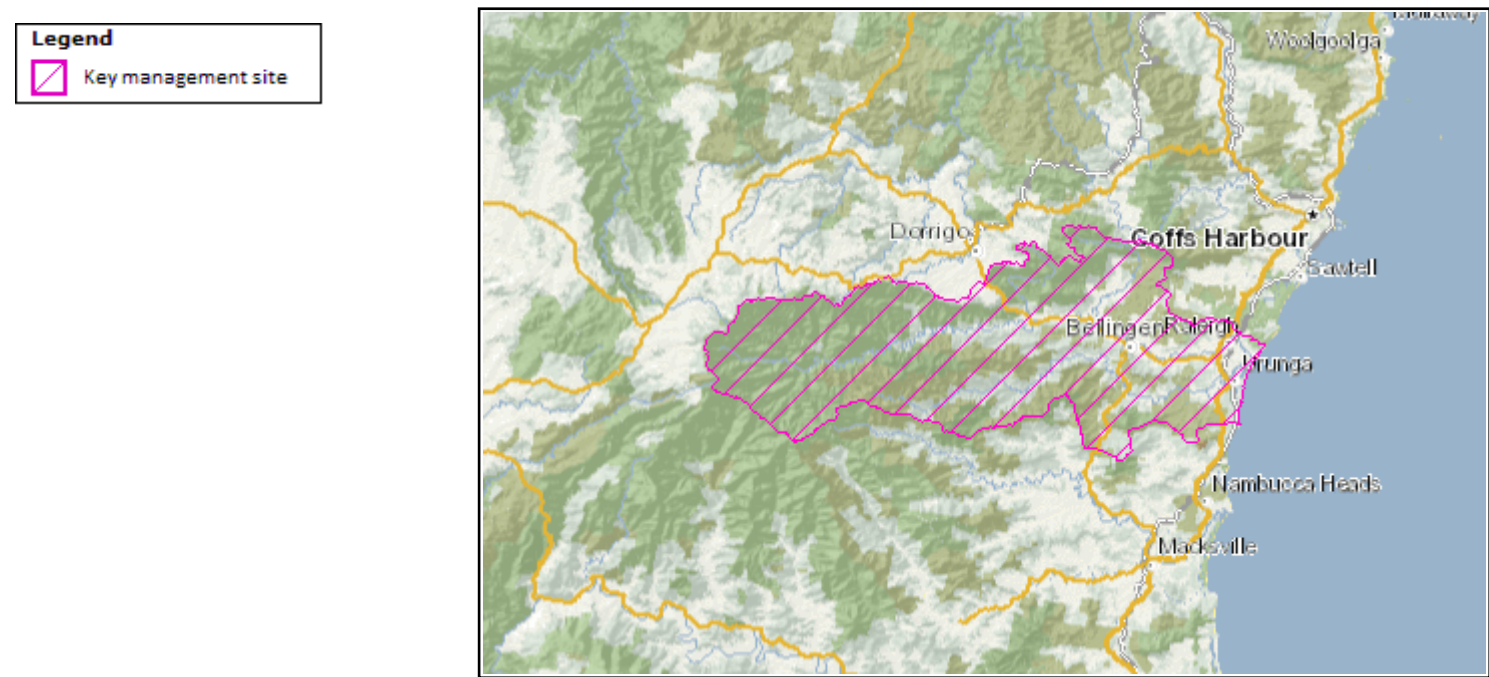
LGA: Armidale Dumaresq; Bellingen; Clarence Valley; Coffs Harbour; Kempsey; Nambucca

NPWS reserve: Baalijin Nature Reserve; Bellinger River National Park; Bindarri National Park; Bollandolla Nature Reserve; Bongil Bongil National Park; Bowraville Nature Reserve; Dorrigo National Park; Ganay Nature Reserve; Gumbaynggirr National Park; Jaaningga Nature Reserve; Juugawaarri Nature Reserve; New England National Park

Occurs on private land: Yes

Estimated population size: Unknown, estimated <300

Management site map



Management activities to protect the Bellinger River Snapping Turtle at the site

Threat name	Objective	Action
Poor recruitment	Augment extant wild population(s)	Fauna translocation
Lack of knowledge of threats	Assess extent/severity or mechanism of threatening processes	Targeted survey
Lack of knowledge of disease	Determine species' susceptibility and/or presence of disease	Investigation of threat dynamics
Loss of key habitat	Restore or supplement habitat or habitat features	Restore/rehabilitate native vegetation
Competition with native species	Manage/reduce competition with native fauna	Trial reduction in competition from other native species and competing vegetation

Monitoring actions

Regular monitoring of species abundance, extent and condition on the site will be conducted to determine population trends through time. The extent and severity of threats will also be monitored to assess the effectiveness of management actions.

Management actions will be adapted, added or removed over time in response to monitoring results, based on maximising the project's effectiveness.

Site 2: Taronga Zoo

Custom-built captive breeding facilities in permanent quarantine at Taronga Zoo, Mosman.

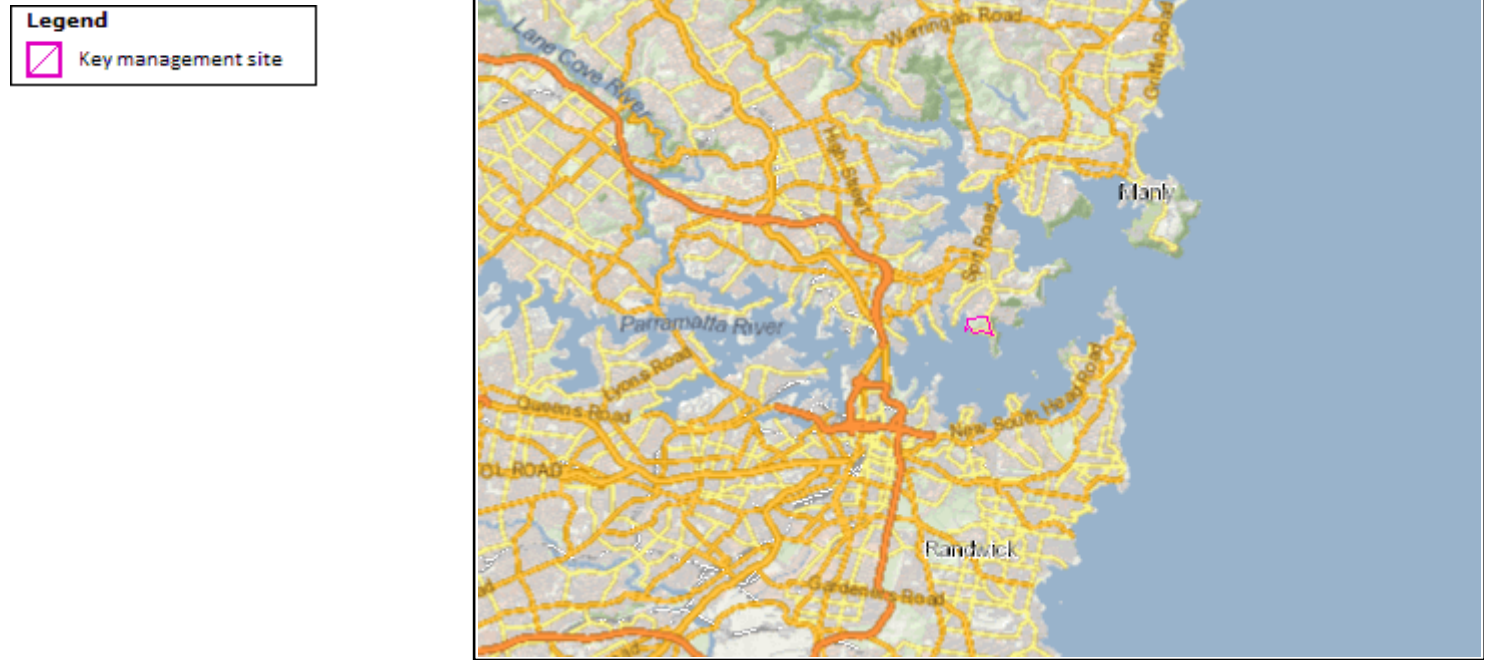
Total site area (ha): 28

LGA: Mosman; Sydney Harbour And Botany Bay (Unincorporated)

Occurs on private land: No

Estimated population size: 16 adults and 21 juveniles

Management site map



Management activities to protect the Bellinger River Snapping Turtle at the site

Threat name	Objective	Action
Poor recruitment	Facilitate sexual reproduction	Captive breeding program

Monitoring actions

Regular monitoring of species abundance, extent and condition on the site will be conducted to determine population trends through time. The extent and severity of threats will also be monitored to assess the effectiveness of management actions.

Management actions will be adapted, added or removed over time in response to monitoring results, based on maximising the project's effectiveness.

Site 3: Australian Registry of Wildlife Health

The registry is located at Taronga Zoo and investigates wildlife disease events.

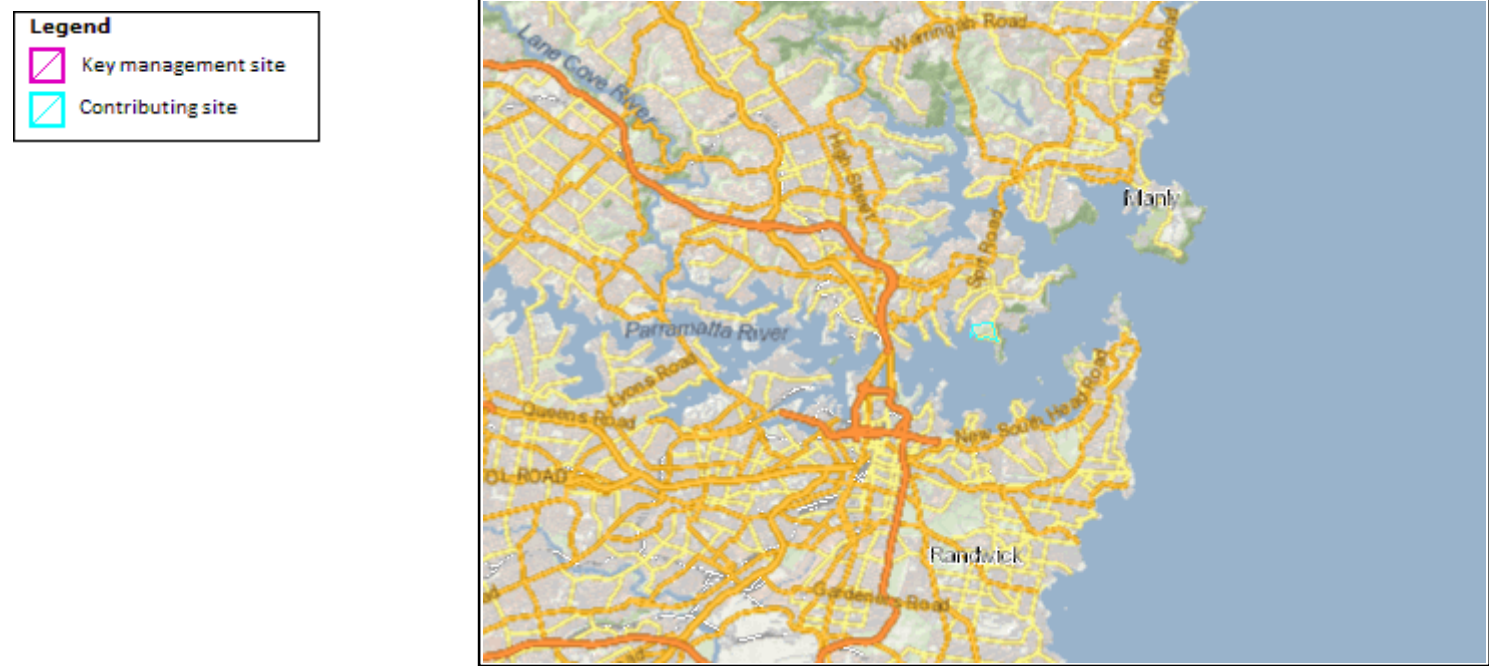
Total site area (ha): 28

LGA: Mosman; Sydney Harbour And Botany Bay (Unincorporated)

Occurs on private land: No

Estimated population size: NA

Management site map



Management activities to protect the Bellinger River Snapping Turtle at the site

Threat name	Objective	Action
Lack of knowledge of disease	Determine species' susceptibility and/or presence of disease	Investigation of disease susceptibility

Monitoring actions

Regular monitoring of species abundance, extent and condition on the site will be conducted to determine population trends through time. The extent and severity of threats will also be monitored to assess the effectiveness of management actions. Management actions will be adapted, added or removed over time in response to monitoring results, based on maximising the project's effectiveness.

Are you helping to save threatened species?

Find out more about our program - visit <http://www.environment.nsw.gov.au/savingourspecies>
Tell us about the work you're doing - visit <http://www.environment.nsw.gov.au/savingourspecies/tellusaboutyourwork.htm>
Published on 09-May-2017