

Help save the Elderslie *Banksia* Scrub Forest in the Sydney Basin Bioregion

Conservation status in NSW: Critically Endangered Ecological Community

Commonwealth status: N/A

Saving our Species management stream: Ecological community (range-restricted)

Community profile:

<http://www.environment.nsw.gov.au/threatenedspeciesapp/profile.aspx?id=10263>

The Saving our Species program aims to conserve threatened species and ecological communities in the wild in NSW in the long term. The project was developed by experts who have identified a minimal set of priority management sites for this community across its distribution, soils and altitudinal range, to be representative of its structure and composition. Experts have identified on-ground critical management actions to address threats at each site.

One priority management site has been identified in NSW (ordered north to south). It is:



- Spring Farm in Camden; Wollondilly LGAs

More information about each site is provided on the following pages.

All conservation work being undertaken to conserve the Elderslie *Banksia* Scrub Forest in the Sydney Basin Bioregion around the state is vital to its recovery. If you are carrying out critical management actions within the ecological community, please let us know at www.environment.nsw.gov.au/savingourspecies/contactus.htm.

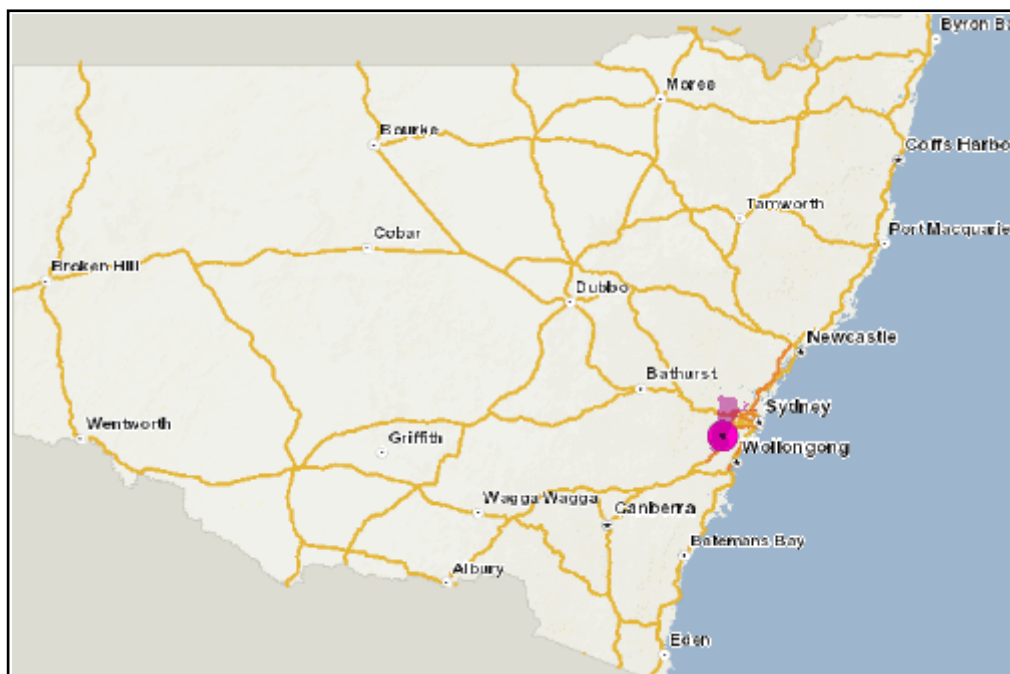
Map of Elderslie *Banksia* Scrub Forest in the Sydney Basin Bioregion distribution and priority management sites

Legend

-  Community distribution
-  Priority management site

Indicative community distribution is mapped as sub-regions where the ecological community is known to occur.

Priority management sites are required for meeting the security objective for SoS-managed ecological communities.



Site 1: Spring Farm

Site is bound by Camden Bypass and Liz Kernohan Drive in the north, a line drawn between where Jacks Gully would meet Liz Kernohan Drive in the east, and the Nepean River in the south. The site encapsulates the sandy soils supporting Elderslie *Banksia* Scrub Forest and possible revegetation areas.

Total site area (ha): 641

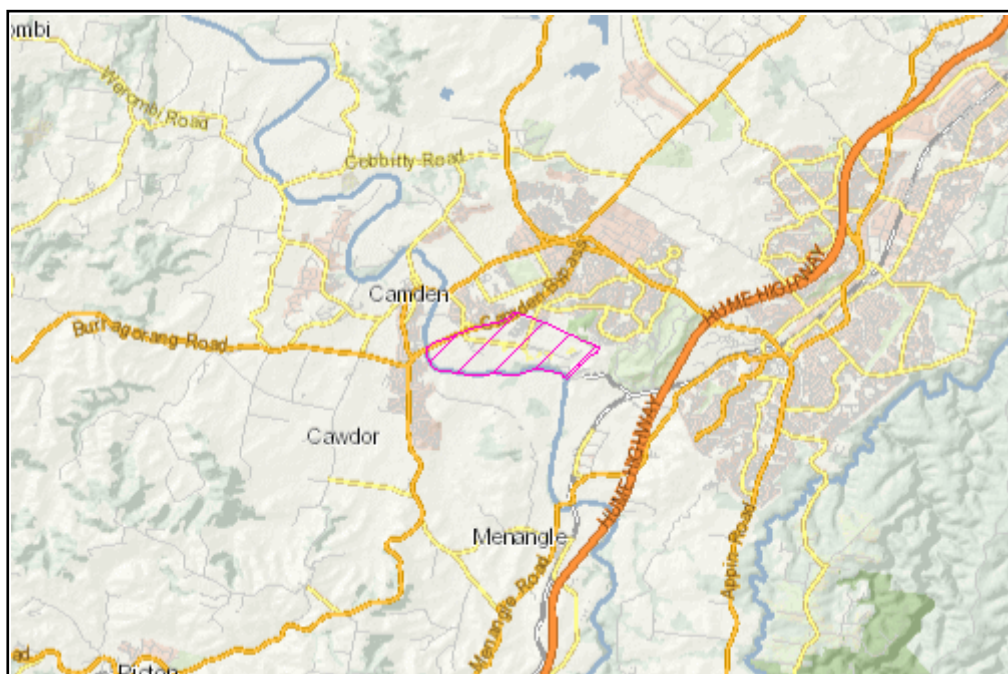
LGA: Camden; Wollondilly

NPWS reserve: William Howe Regional Park

Management site map

Legend

 Priority management site



Management activities to protect the Elderslie *Banksia* Scrub Forest in the Sydney Basin Bioregion at the site

Threat name	Objective	Action
Rural/residential/industrial development	Minimise impacts/incidence of clearing on the species/habitat	Access barrier(s)
Rural/residential/industrial development	Minimise impacts/incidence of clearing on the species/habitat	Install informative signs
Rural/residential/industrial development	Minimise impacts/incidence of clearing on the species/habitat	Land manager consultation
Rural/residential/industrial development	Restore or supplement habitat or habitat features	Restore/rehabilitate native vegetation
Mixed weeds	Reduce and maintain weed densities at low levels	Site-based weed control
Inappropriate fire regime	Maintain appropriate fire regime for the species/community	Fire planning
Drought	Maintain appropriate moisture levels for species in the site	Environmental water supplementation
Mixed feral browsers	Reduce the impacts of grazing	Rabbit control
Biosecurity	Prevent entry of disease to the site	Hygiene protocols
Illegal dumping	Reduce incidence of illegal dumping	Remove dumped waste
Small population size	Identify additional population(s)	Targeted survey

Monitoring actions

Regular monitoring of the threatened ecological community's extent and condition on the site will be conducted to determine trends through time. The extent and severity of threats will also be monitored to assess the effectiveness of management actions. Management actions will be adapted, added or removed over time in response to monitoring results, based on maximising the project's effectiveness.

Are you helping to save threatened ecological communities?

Find out more about our program - visit <http://www.environment.nsw.gov.au/savingourspecies>

Tell us about the work you're doing - visit <http://www.environment.nsw.gov.au/savingourspecies/tellusaboutyourwork.htm>

Published on 18-May-2017