

Source: <http://maps.six.nsw.gov.au>



STATEMENT OF ENVIRONMENTAL EFFECTS **40 Childe Street, Belongil Beach, Byron Bay**

FIGURE 1
 Location

Prepared For - King & Wood Mallesons



Source: <http://maps.six.nsw.gov.au>

STATEMENT OF ENVIRONMENTAL EFFECTS
40 Childe Street, Belongil Beach, Byron Bay

FIGURE 2
Site

Prepared For - King & Wood Malleons

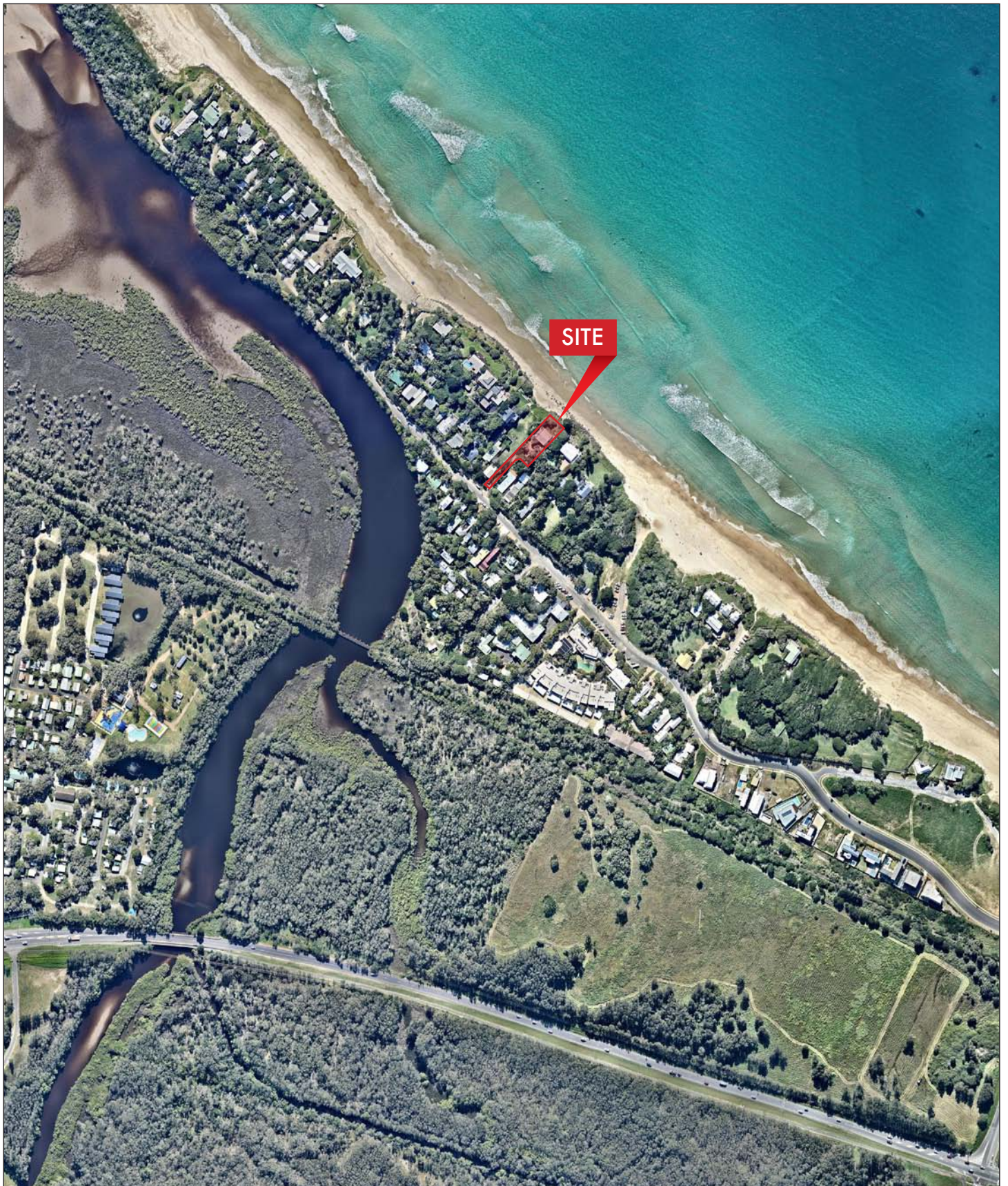


Source: NearMap 2016

STATEMENT OF ENVIRONMENTAL EFFECTS
40 Childe Street, Belongil Beach, Byron Bay

FIGURE 3A
Aerial Photo - Detail

Prepared For - King & Wood Mallesons



Source: NearMap 2016

STATEMENT OF ENVIRONMENTAL EFFECTS
40 Childe Street, Belongil Beach, Byron Bay

FIGURE 3B
Aerial Photo - Wider Area

Prepared For - King & Wood Mallesons