

Help save the Sandhill Pine Woodland in the Riverina, Murray-Darling Depression and NSW South Western Slopes bioregions

Conservation status in NSW: Endangered Ecological Community

Commonwealth status: N/A

Saving our Species management stream: Ecological community (widespread)

Community profile:

<http://www.environment.nsw.gov.au/threatenedspeciesapp/profile.aspx?id=20083>

The Saving our Species program aims to conserve threatened species and ecological communities in the wild in NSW in the long term. The project was developed by experts who have identified a set of representative management areas across the distribution of the ecological community that would benefit from targeted management. Experts have identified critical management actions which may be required for conserving the ecological community within these areas and/or at the site scale.

Four priority management areas have been identified in NSW (ordered north to south). They are:

- Mungo in Balranald; Wentworth LGAs
- Coomealla - Gol Gol in Wentworth LGA
- Oolambeyan in Conargo; Hay; Jerilderie; Leeton; Murrumbidgee; Narrandera; Urana LGAs
- Murray - contributing area in Berrigan; Conargo; Deniliquin; Murray LGAs

More information about each area is provided on the following pages.

All conservation work being undertaken to conserve the Sandhill Pine Woodland in the Riverina, Murray-Darling Depression and NSW South Western Slopes bioregions around the state is vital to its recovery. If you are carrying out critical management actions within the ecological community, please let us know at www.environment.nsw.gov.au/savingourspecies/contactus.htm.

Map of Sandhill Pine Woodland in the Riverina, Murray-Darling Depression and NSW South Western Slopes bioregions distribution and priority management areas

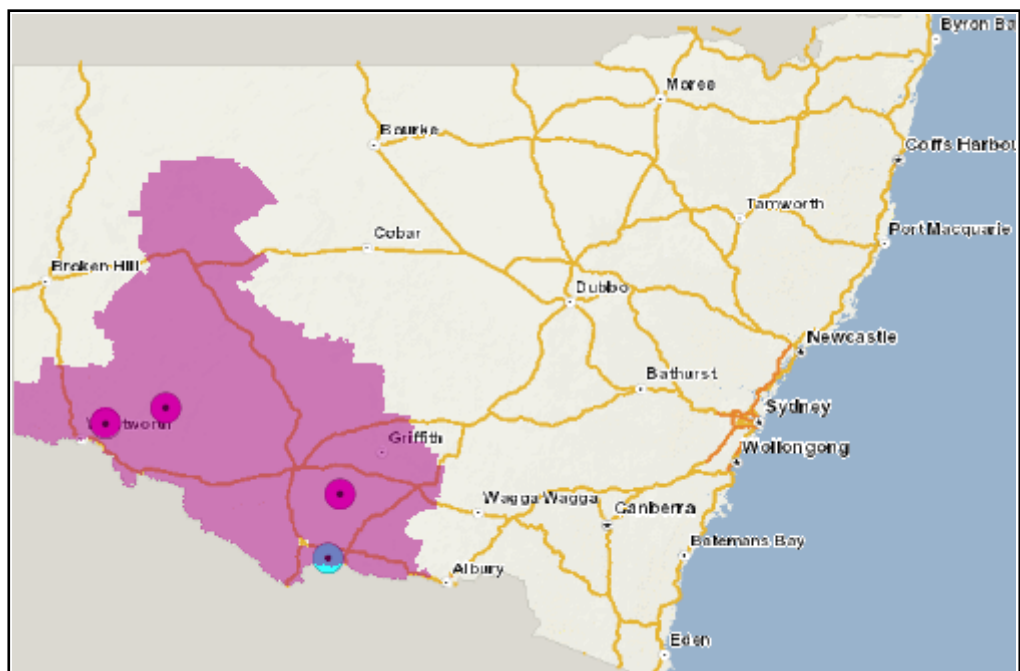
Legend

- Community distribution
- Priority management area
- Contributing area

Indicative community distribution is mapped as sub-regions where the ecological community is known to occur.

Priority management areas are required for meeting the security objective for SoS-managed ecological communities.

Contributing sites/areas provide additional benefit to the viability of the ecological community, supplementing the minimum critical set of sites/areas in NSW required to meet the project objective.



Threats to this ecological community are outlined at:

<http://www.environment.nsw.gov.au/threatenedspeciesapp/profile.aspx?id=20083#threats>.

The actions listed in the management action toolbox are supplementary to NSW legislation, policy and programs and can be used by stakeholders, where applicable, to guide management at a site, regional area or state scale.

Action toolbox

Action description	Scale
Undertake investigations at select sites regarding the quality, quantity and diversity of the seed. Prior to undertaking seed collection in accordance with Flora Bank guidelines, ascertain options for seed storage facilities that have the capacity to supply the quantity and genetic diversity of seed required for revegetation works across the region.	State
Undertake active weed control of Africa boxthorn. Encourage and support landholders to remove boxthorn on their properties. Encourage landholders to revegetate with understorey species early, to replace Woodlands lost through the removal of boxthorn.	Site
Manage rabbits and hares using a regional integrated pest management approach. This includes but is not limited to calicivirus releases, poison programs, warren ripping, follow-up poison programs and ground shooting.	Site, Area
Manage goats using a regional integrated pest management approach. This includes but is not limited to mustering, aerial shooting, trapping at waterpoints and ground shooting.	Site
Erect interpretive signage at strategic sites to provide information about Woodland and about impacts from disturbance of firewood collection.	Site
Protect areas to foster natural regeneration by excluding grazing via fencing. Fencing should be done at an effective scale (paddocks) to include the majority of extent of existing standing trees and enclose the main area of soil type adequate to allow for effective regeneration & ultimately grazing management (i.e. this may require paddock subdivisions etc.).	Site
Provide support to Flora Bank and adopt their guidelines for any active replanting activities.	Site, Area, State
Work with the local Aboriginal community to identify cultural sites where revegetation and other management works are not appropriate.	Site

Area 1: Mungo

Area is located between the Hatfield-Penarie Road west towards the Pooncarie Road and from Euston in the south towards the Ivanhoe-Menindee Road in the north.

Total area (ha): 965,953

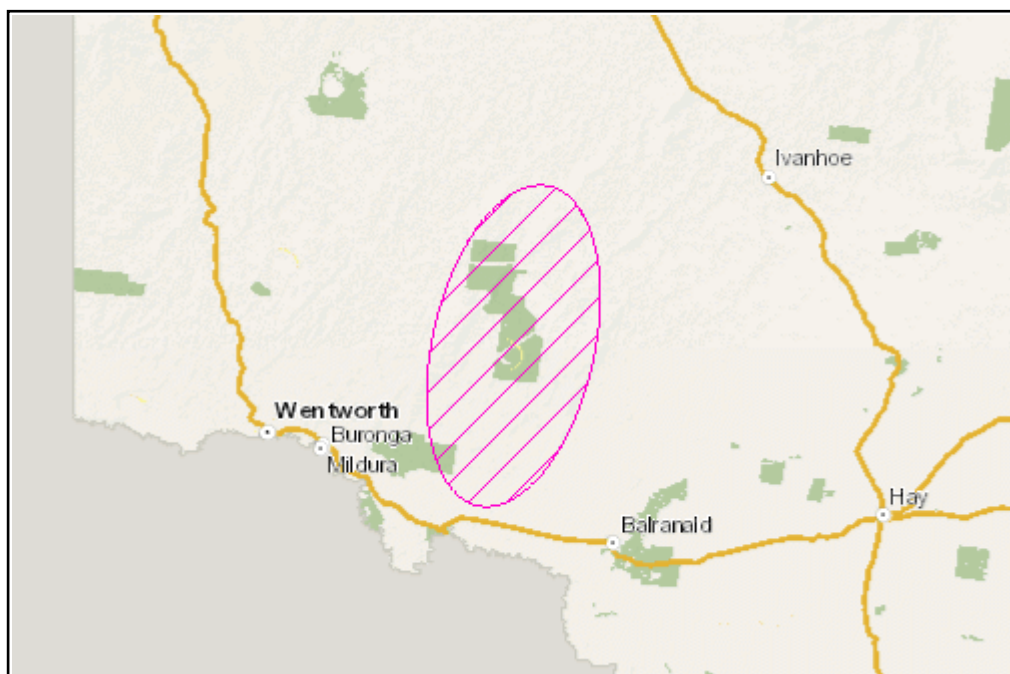
LGA: Balranald; Wentworth

NPWS reserve: Mallee Cliffs National Park; Mungo National Park; Mungo State Conservation Area

Management area map

Legend

 Priority management area



Monitoring actions

Regular monitoring of the effectiveness of management is an important component of threatened ecological communities. The toolbox and any area-based management plans for threatened ecological communities (widespread) will be adapted, added or removed over time in response to monitoring results.

Area 2: Coomealla - Gol Gol


Area extends from the Murray River, north towards Pooncarie.

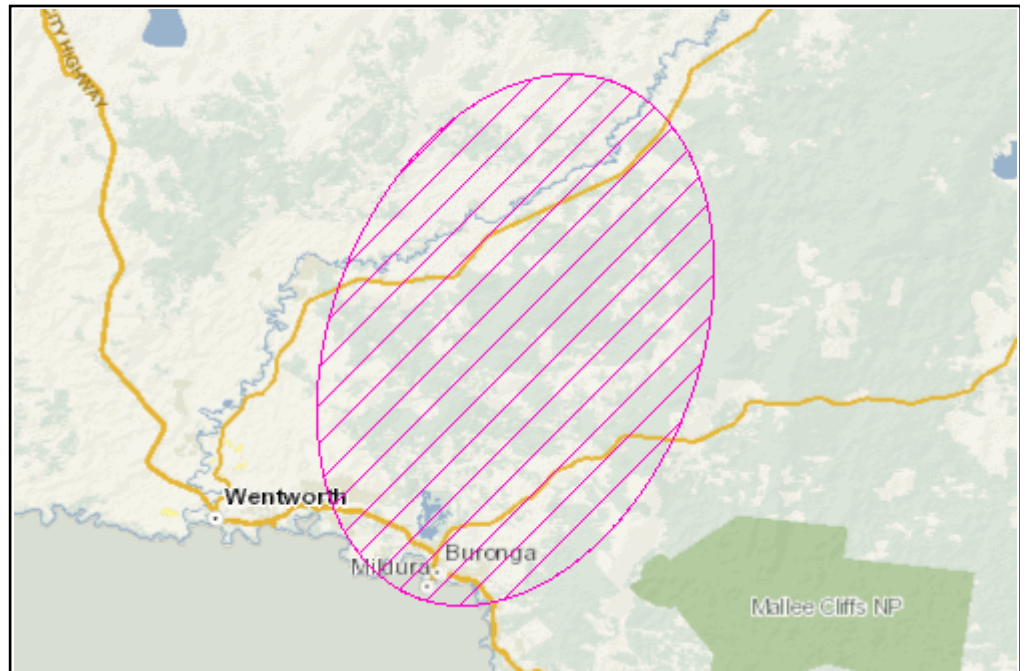
Total area (ha): 230,976

LGA: Wentworth

Management area map

Legend

 Priority management area



Monitoring actions

Regular monitoring of the effectiveness of management is an important component of threatened ecological communities. The toolbox and any area-based management plans for threatened ecological communities (widespread) will be adapted, added or removed over time in response to monitoring results.

Area 3: Oolambeyan

Area is south of the Sturt Highway, from Morundah in the east, west to Booororban and Wanganella on the Cobb Highway.

Total area (ha): 859,789

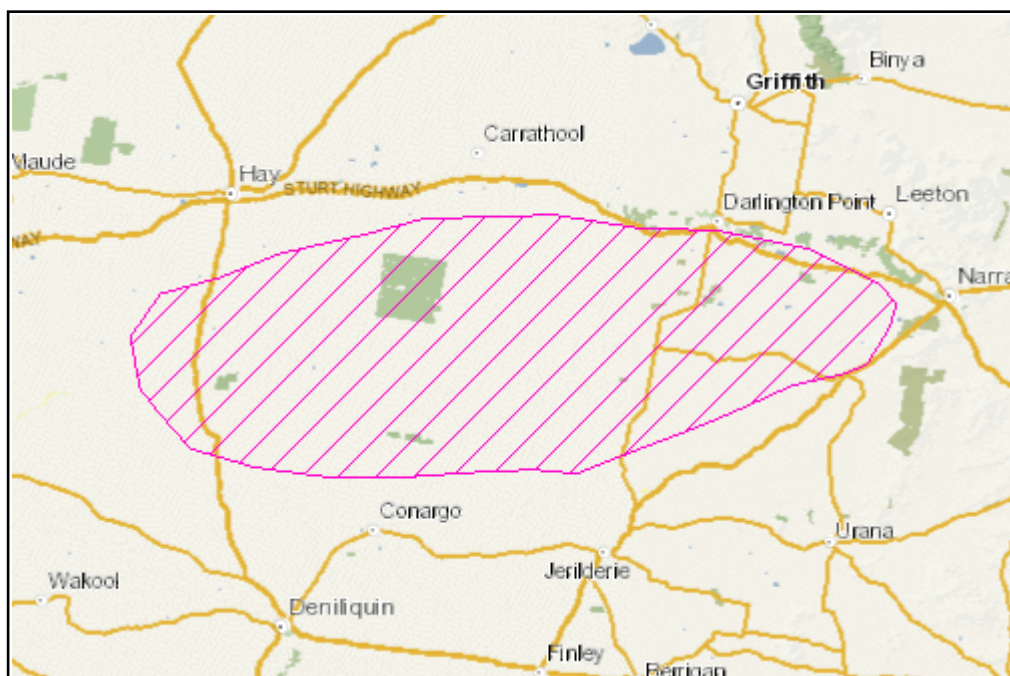
LGA: Conargo; Hay; Jerilderie; Leeton; Murrumbidgee; Narrandera; Urana

NPWS reserve: Murrumbidgee Valley National Park; Oolambeyan National Park; South West Woodland Nature Reserve

Management area map

Legend

 Priority management area



Monitoring actions

Regular monitoring of the effectiveness of management is an important component of threatened ecological communities. The toolbox and any area-based management plans for threatened ecological communities (widespread) will be adapted, added or removed over time in response to monitoring results.

Area 4: Murray - contributing area

Area is bounded by the Murray River in the south, the Cobb Highway in the west, the Riverina Highway to the north and the Berrigan-Cobram Road in the east.



Total area (ha): 285,862

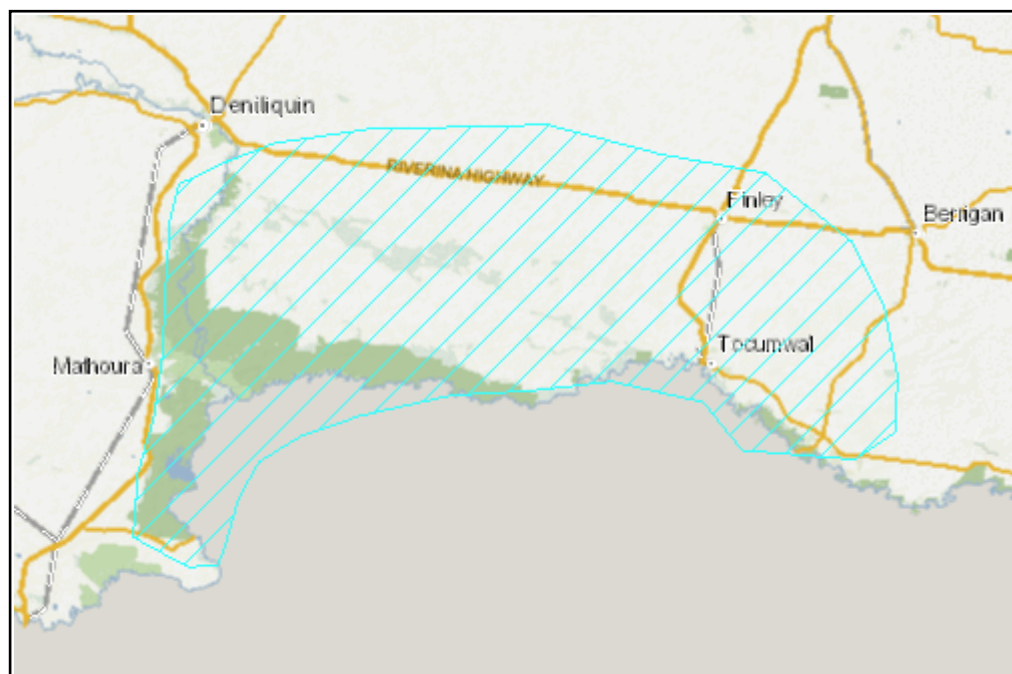
LGA: Berrigan; Conargo; Deniliquin; Murray

NPWS reserve: Murray Valley National Park; Murray Valley Regional Park

Management area map

Legend

-  Priority management area
-  Contributing area



Monitoring actions

Regular monitoring of the effectiveness of management is an important component of threatened ecological communities. The toolbox and any area-based management plans for threatened ecological communities (widespread) will be adapted, added or removed over time in response to monitoring results.

Are you helping to save threatened ecological communities?

Find out more about our program - visit <http://www.environment.nsw.gov.au/savingourspecies>

Tell us about the work you're doing - visit <http://www.environment.nsw.gov.au/savingourspecies/tellusaboutyourwork.htm>

Published on 09-May-2017