

Help save the Milton Ulladulla Subtropical Rainforest in the Sydney Basin Bioregion

Conservation status in NSW: Endangered Ecological Community

Commonwealth status: N/A

Saving our Species management stream: Ecological community (range-restricted)

Community profile:

<http://www.environment.nsw.gov.au/threatenedspeciesapp/profile.aspx?id=10532>

The Saving our Species program aims to conserve threatened species and ecological communities in the wild in NSW in the long term. The project was developed by experts who have identified a minimal set of priority management sites for this community across its distribution, soils and altitudinal range, to be representative of its structure and composition. Experts have identified on-ground critical management actions to address threats at each site.

Five priority management sites have been identified in NSW (ordered north to south). They are:



- Yatte Yattah in Shoalhaven LGA
- Pointer Mountain in Shoalhaven LGA
- Croobyar Creek in Shoalhaven LGA
- Milton in Shoalhaven LGA
- Stony Creek in Shoalhaven LGA

More information about each site is provided on the following pages.

All conservation work being undertaken to conserve the Milton Ulladulla Subtropical Rainforest in the Sydney Basin Bioregion around the state is vital to its recovery. If you are carrying out critical management actions within the ecological community, please let us know at www.environment.nsw.gov.au/savingourspecies/contactus.htm.

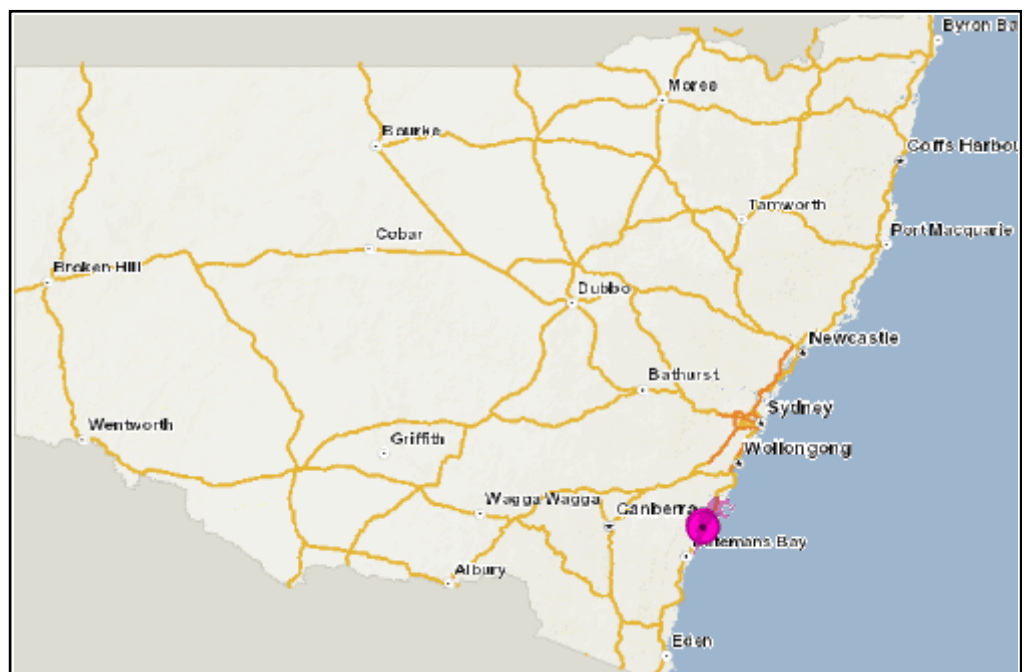
Map of Milton Ulladulla Subtropical Rainforest in the Sydney Basin Bioregion distribution and priority management sites

Legend

-  Community distribution
-  Priority management site

Indicative community distribution is mapped as sub-regions where the ecological community is known to occur.

Priority management sites are required for meeting the security objective for SoS-managed ecological communities.



Site 1: Yatte Yattah


The site consists of three discrete patches adjacent to the Princes Highway approximately four kilometres north of Milton and one kilometre west of Conjola Lake.

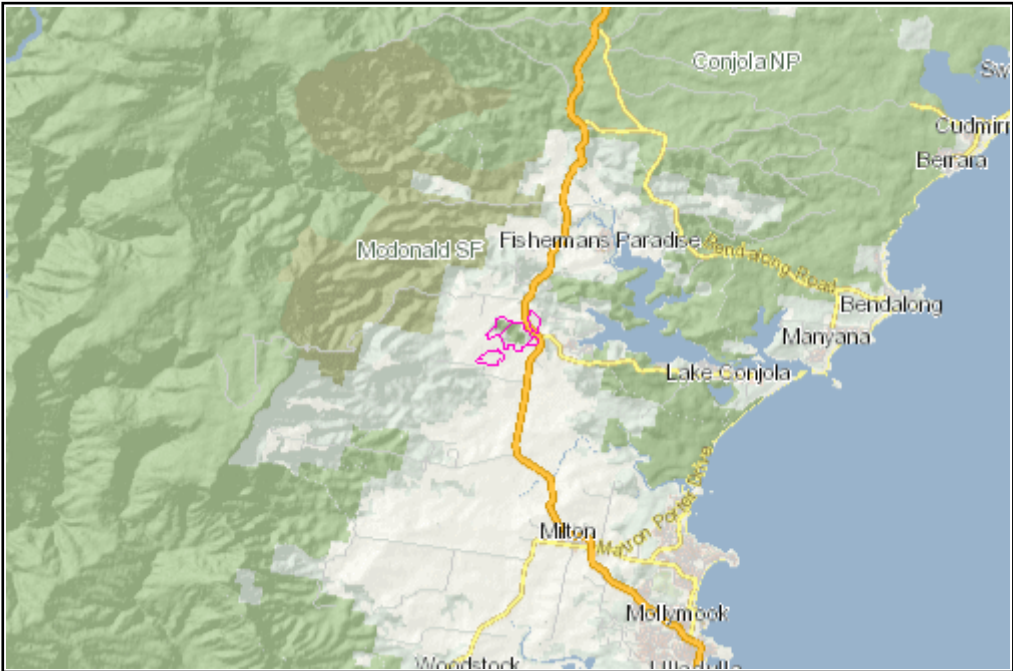
Total site area (ha): 120

LGA: Shoalhaven

NPWS reserve: Yatteyattah Nature Reserve

Management site map

Legend
 Priority management site



Management activities to protect the Milton Ulladulla Subtropical Rainforest in the Sydney Basin

Bioregion at the site

Threat name	Objective	Action
Rural/residential/industrial development	Ensure land management is sympathetic to the long term requirements of the species	Provide advice to land manager
Habitat fragmentation	Restore or supplement habitat or habitat features	Native vegetation planting
Mixed weeds	Reduce and maintain weed densities at low levels	Site-based weed control
Domestic stock	Ensure grazing regime is appropriate for the species/community	Stock fencing
Uncertainty of future land management practices	Ensure land management is sympathetic to the long term requirements of the species	Install signage

Monitoring actions

Regular monitoring of the threatened ecological community's extent and condition on the site will be conducted to determine trends through time. The extent and severity of threats will also be monitored to assess the effectiveness of management actions. Management actions will be adapted, added or removed over time in response to monitoring results, based on maximising the project's effectiveness.

Site 2: Pointer Mountain

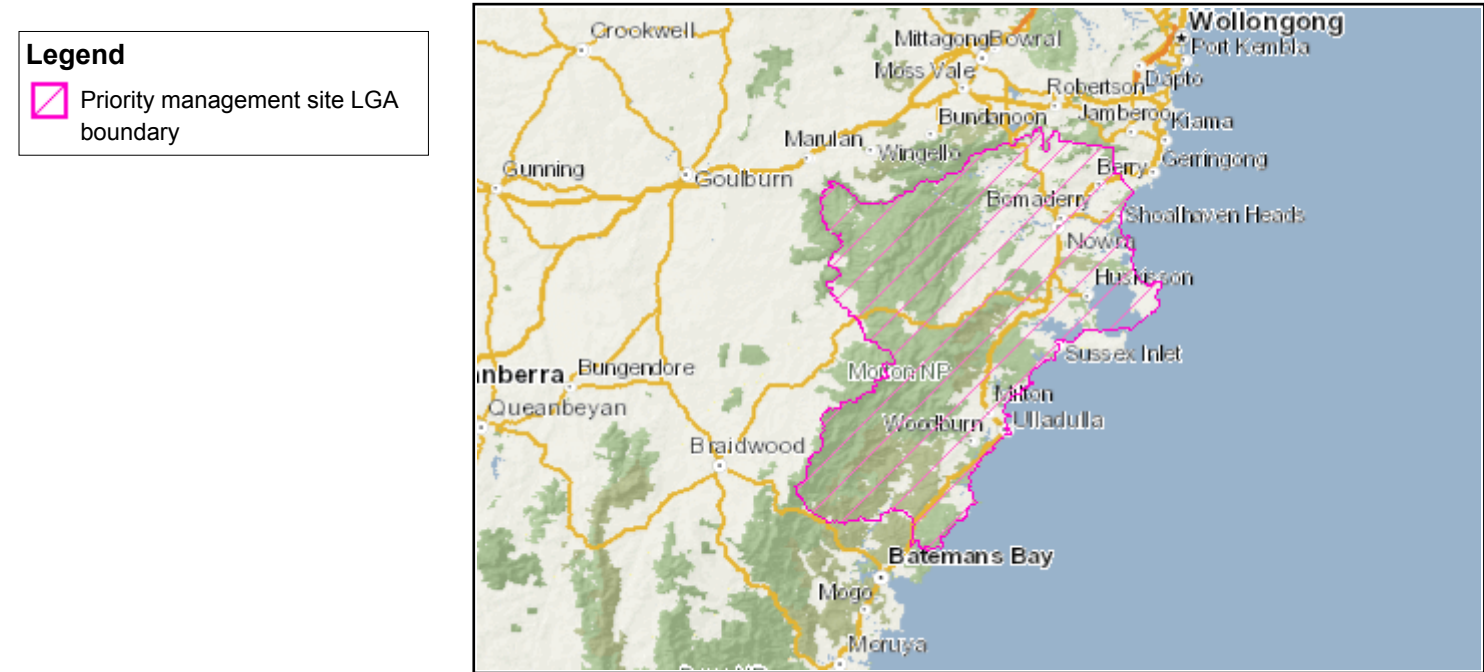
This management site occurs within the Shoalhaven Local Government Area (LGA). Due to the sensitive nature of the community or the site, the exact location cannot be identified. If you would like more information or are interested in becoming involved in the conservation of this ecological community, please register your interest via the SoS website.

Total site area (ha): 1,016

LGA: Shoalhaven

NPWS reserve: Morton National Park

Management site map



Management activities to protect the Milton Ulladulla Subtropical Rainforest in the Sydney Basin

Bioregion at the site

Threat name	Objective	Action
Lack of distributional information	Determine area of occupancy of the species/community	Investigation of habitat suitability

Monitoring actions

Regular monitoring of the threatened ecological community's extent and condition on the site will be conducted to determine trends through time. The extent and severity of threats will also be monitored to assess the effectiveness of management actions. Management actions will be adapted, added or removed over time in response to monitoring results, based on maximising the project's effectiveness.


Site 3: Croobyar Creek

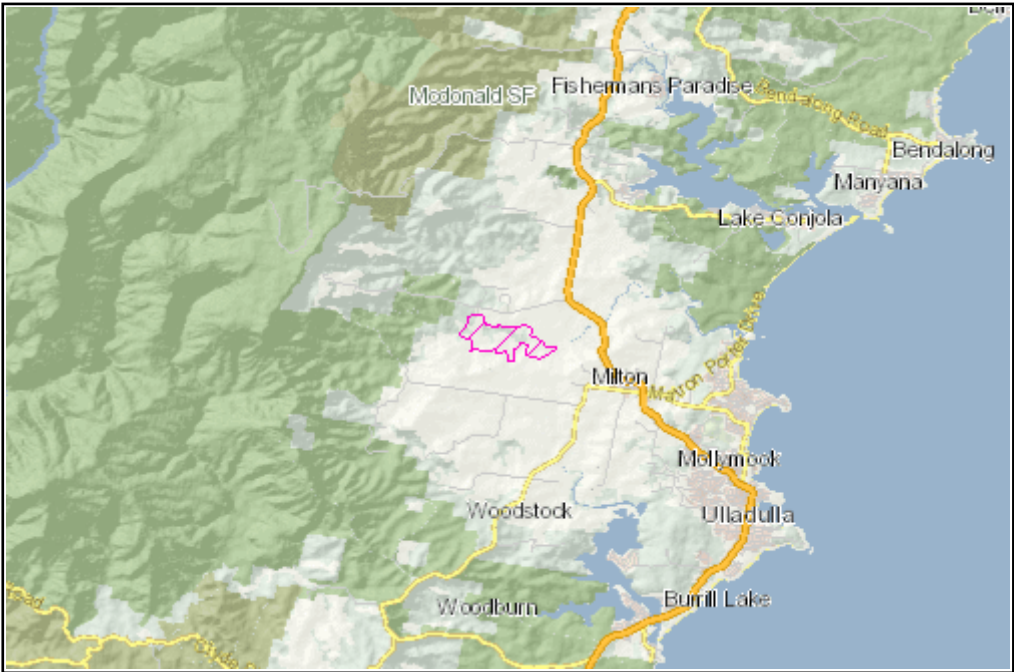
A continuous site buffering Croobyar Creek between Milton and Little Forest.

Total site area (ha): 186

LGA: Shoalhaven

Management site map

Legend
 Priority management site



Management activities to protect the Milton Ulladulla Subtropical Rainforest in the Sydney Basin

Bioregion at the site

Threat name	Objective	Action
Habitat fragmentation	Restore or supplement habitat or habitat features	Native vegetation planting
Mixed weeds	Reduce and maintain weed densities at low levels	Site-based weed control
Domestic stock	Ensure grazing regime is appropriate for the species/community	Stock fencing
Rural/residential/industrial development	Ensure land management is sympathetic to the long term requirements of the species	Provide advice to land manager

Monitoring actions

Regular monitoring of the threatened ecological community’s extent and condition on the site will be conducted to determine trends through time. The extent and severity of threats will also be monitored to assess the effectiveness of management actions. Management actions will be adapted, added or removed over time in response to monitoring results, based on maximising the project’s effectiveness.

Site 4: Milton

A single site containing numerous patches of the TEC immediately north of Milton and south of Croobyar Creek.

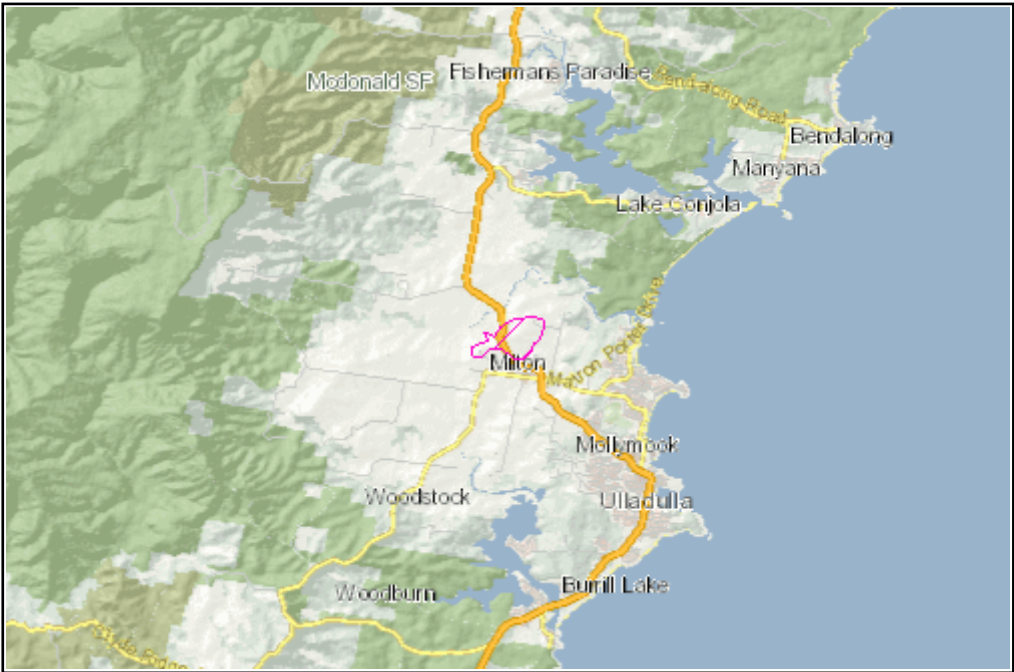
Total site area (ha): 158

LGA: Shoalhaven

Management site map

Legend

Priority management site



Management activities to protect the Milton Ulladulla Subtropical Rainforest in the Sydney Basin

Bioregion at the site

Threat name	Objective	Action
Habitat fragmentation	Restore or supplement habitat or habitat features	Native vegetation planting
Mixed weeds	Reduce and maintain weed densities at low levels	Site-based weed control
Domestic stock	Ensure grazing regime is appropriate for the species/community	Stock fencing
Rural/residential/industrial development	Ensure land management is sympathetic to the long term requirements of the species	Provide advice to land manager

Monitoring actions

Regular monitoring of the threatened ecological community's extent and condition on the site will be conducted to determine trends through time. The extent and severity of threats will also be monitored to assess the effectiveness of management actions. Management actions will be adapted, added or removed over time in response to monitoring results, based on maximising the project's effectiveness.

Site 5: Stony Creek

The two sites are approximately bounded by Evans Lane and Croobyar Road; two kilometres south-west of Milton.

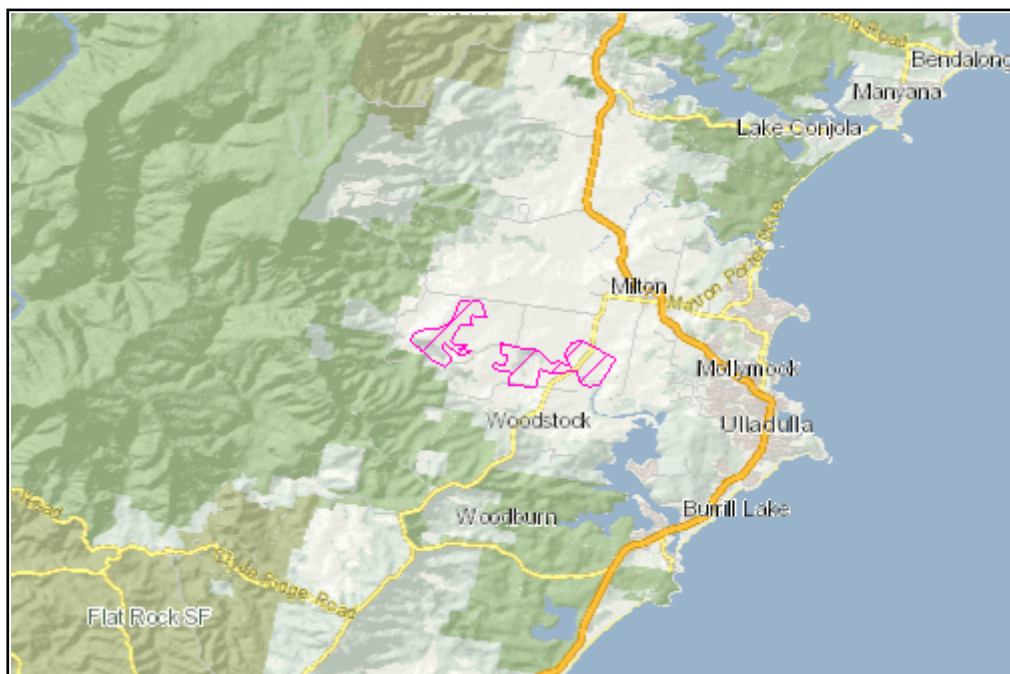
Total site area (ha): 436

LGA: Shoalhaven

Management site map

Legend

 Priority management site



Management activities to protect the Milton Ulladulla Subtropical Rainforest in the Sydney Basin

Bioregion at the site

Threat name	Objective	Action
Habitat fragmentation	Restore or supplement habitat or habitat features	Native vegetation planting
Mixed weeds	Reduce and maintain weed densities at low levels	Site-based weed control
Domestic stock	Ensure grazing regime is appropriate for the species/community	Stock fencing
Rural/residential/industrial development	Ensure land management is sympathetic to the long term requirements of the species	Provide advice to land manager

Monitoring actions

Regular monitoring of the threatened ecological community's extent and condition on the site will be conducted to determine trends through time. The extent and severity of threats will also be monitored to assess the effectiveness of management actions. Management actions will be adapted, added or removed over time in response to monitoring results, based on maximising the project's effectiveness.

Are you helping to save threatened ecological communities?

Find out more about our program - visit <http://www.environment.nsw.gov.au/savingourspecies>

Tell us about the work you're doing - visit <http://www.environment.nsw.gov.au/savingourspecies/tellusaboutyourwork.htm>

Published on 18-May-2017