

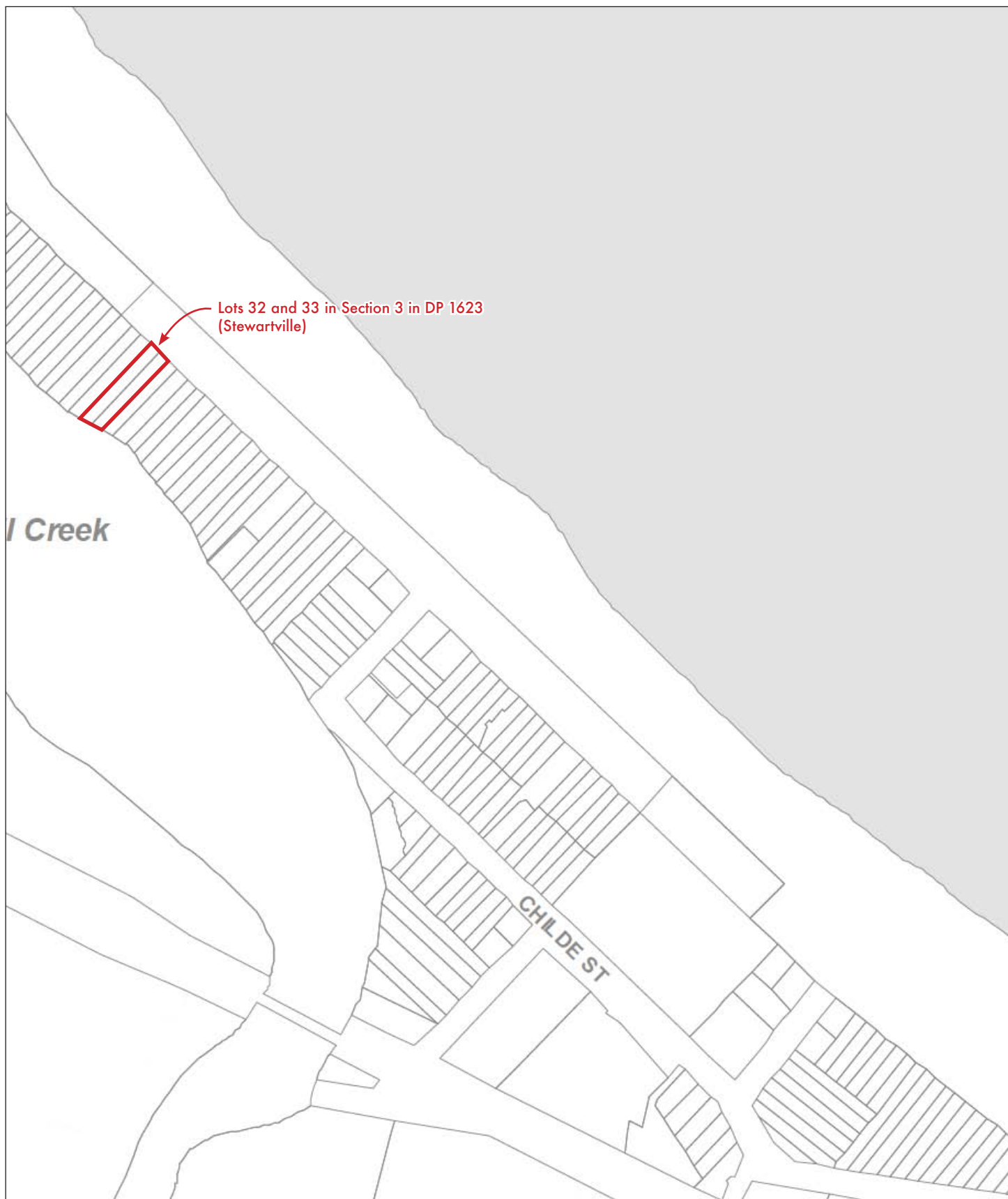
Source: <http://maps.six.nsw.gov.au>



STATEMENT OF ENVIRONMENTAL EFFECTS
6, 6A and 6B Childe Street, Belongil Beach, Byron Bay

FIGURE 1
Location

Prepared For - King & Wood Mallesons

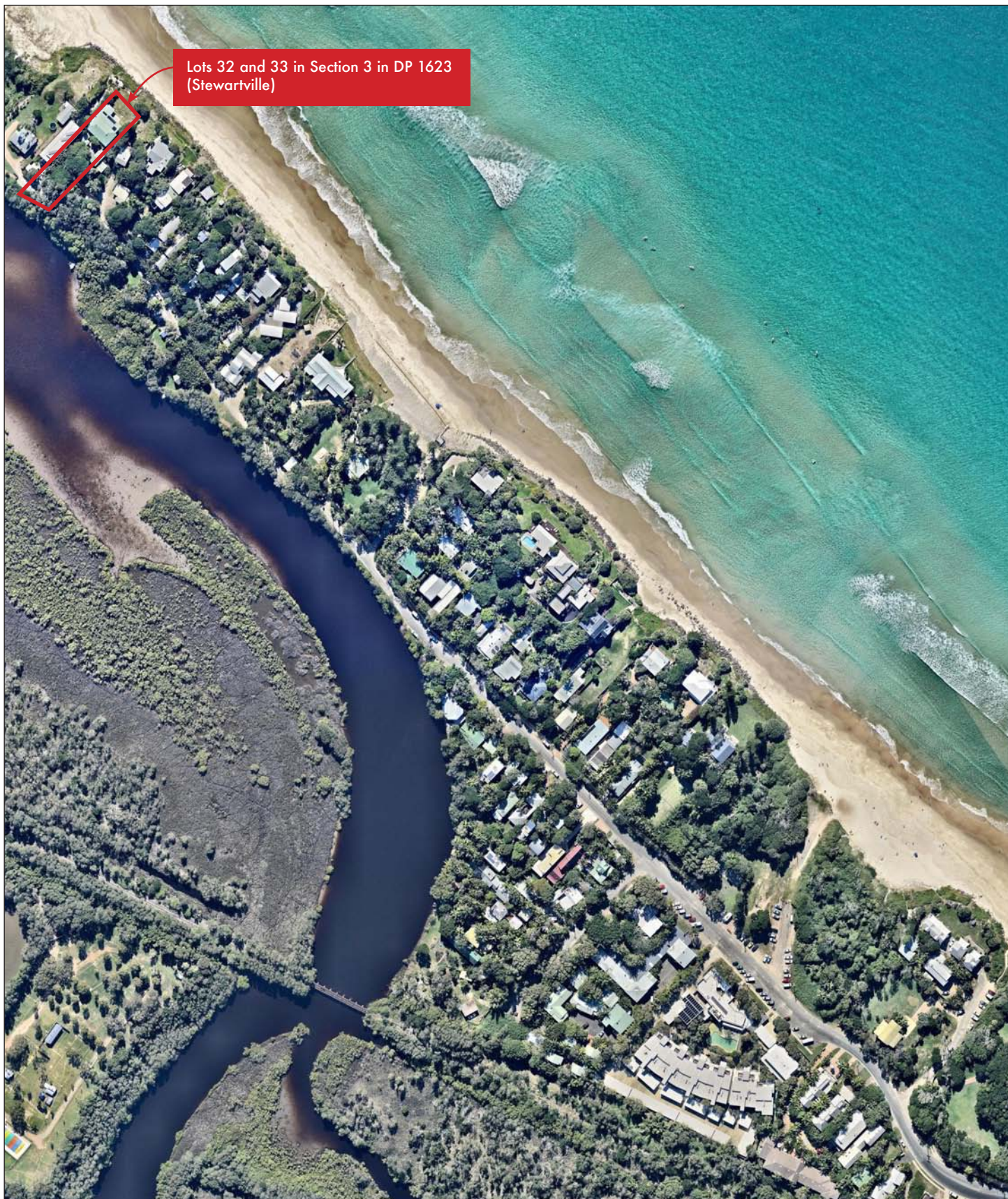


Source: <http://maps.six.nsw.gov.au>

STATEMENT OF ENVIRONMENTAL EFFECTS
6, 6A and 6B Childe Street, Belongil Beach, Byron Bay

FIGURE 2
Site

Prepared For - King & Wood Malleons



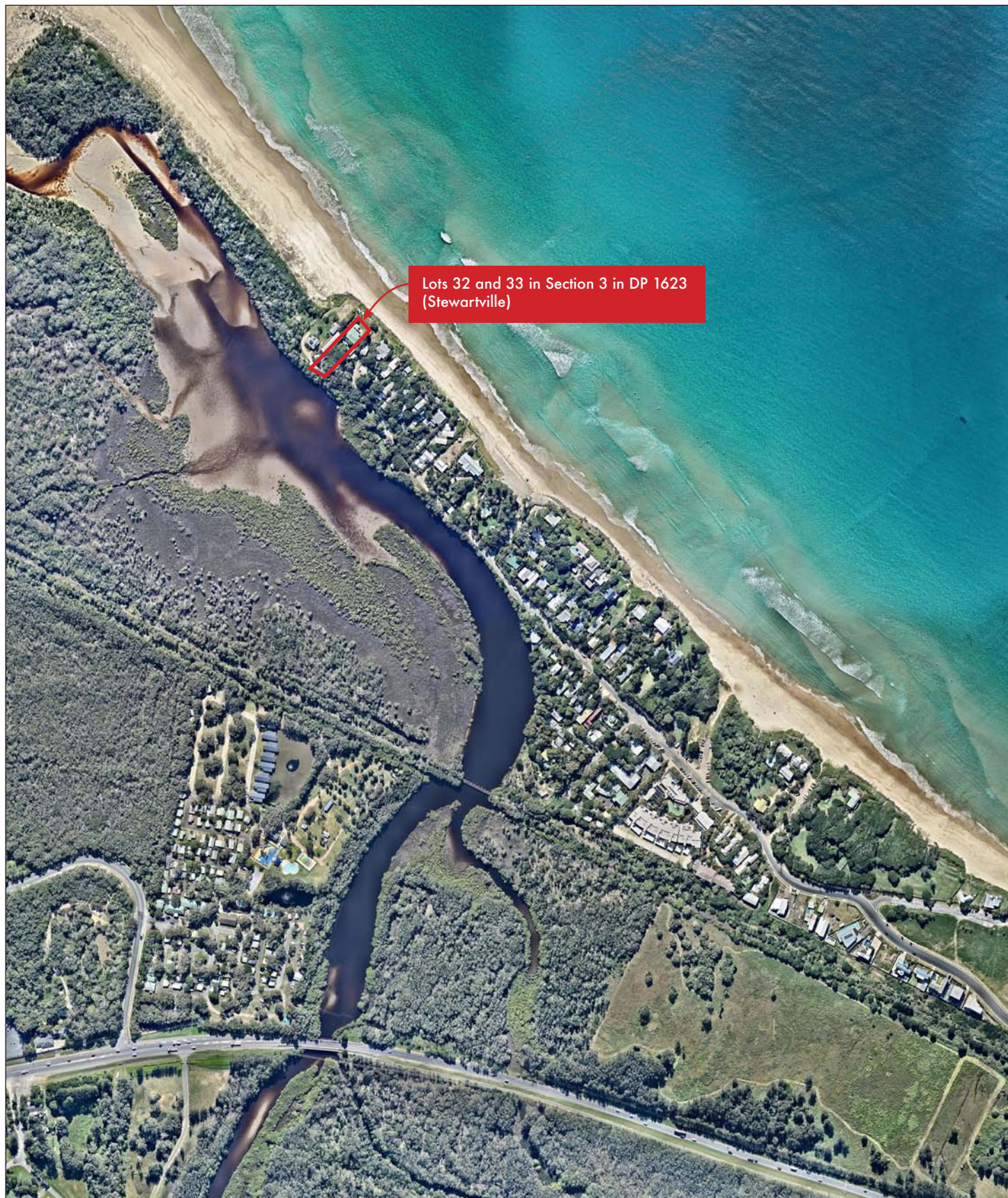
Lots 32 and 33 in Section 3 in DP 1623
(Stewartville)

Source: NearMap 2016

STATEMENT OF ENVIRONMENTAL EFFECTS
6, 6A and 6B Childe Street, Belongil Beach, Byron Bay

FIGURE 3A
Aerial Photo - Detail

Prepared For - King & Wood Mallesons



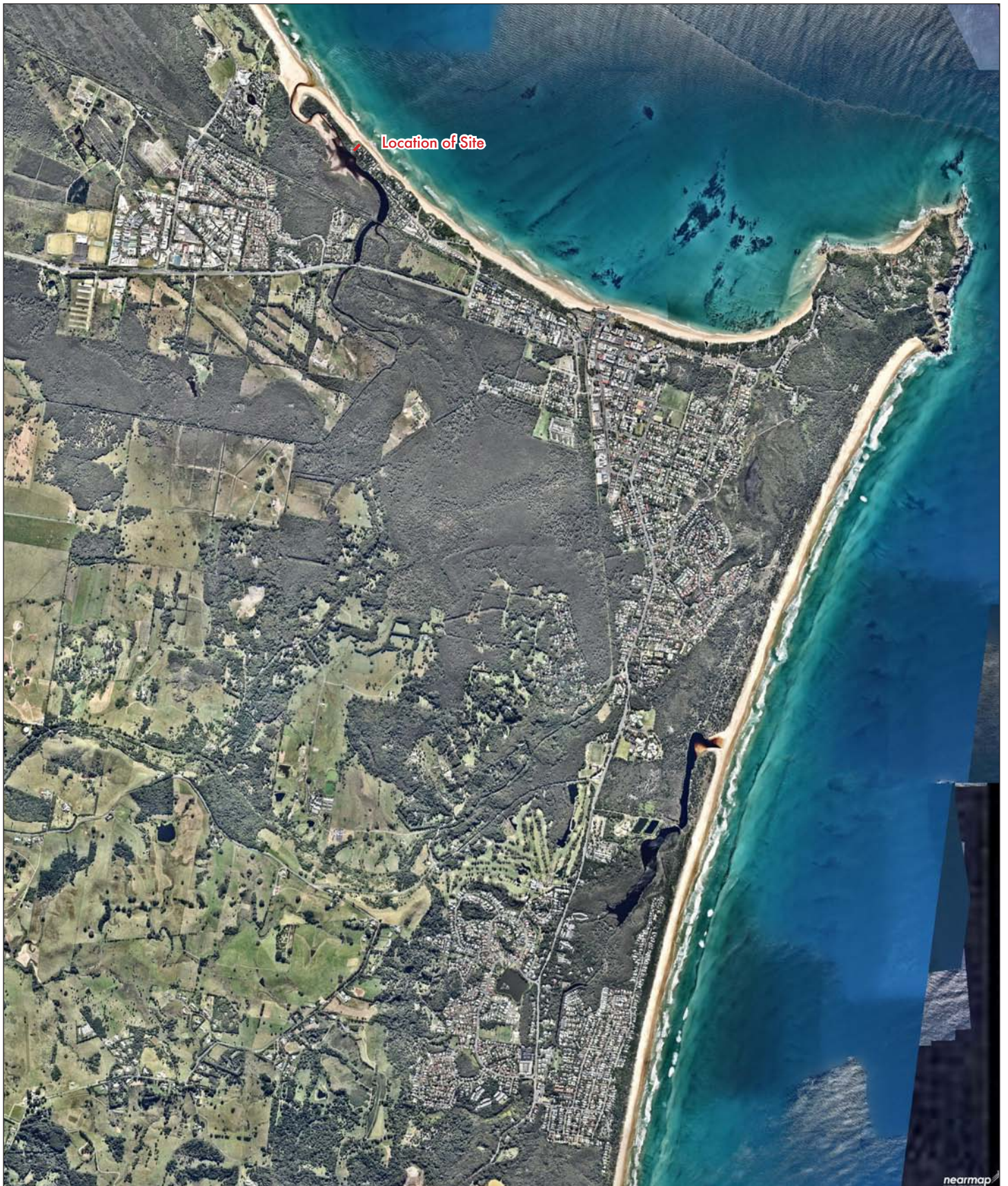
Lots 32 and 33 in Section 3 in DP 1623
(Stewartville)

Source: NearMap 2016

STATEMENT OF ENVIRONMENTAL EFFECTS
6, 6A and 6B Childe Street, Belongil Beach, Byron Bay

FIGURE 3B
Aerial Photo - Wider Area

Prepared For - King & Wood Malleons



Source: NearMap 2016

STATEMENT OF ENVIRONMENTAL EFFECTS
6, 6A and 6B Childe Street, Belongil Beach, Byron Bay

FIGURE 3C
Aerial Photo - Byron Bay Township

Prepared For - King & Wood Mallesons