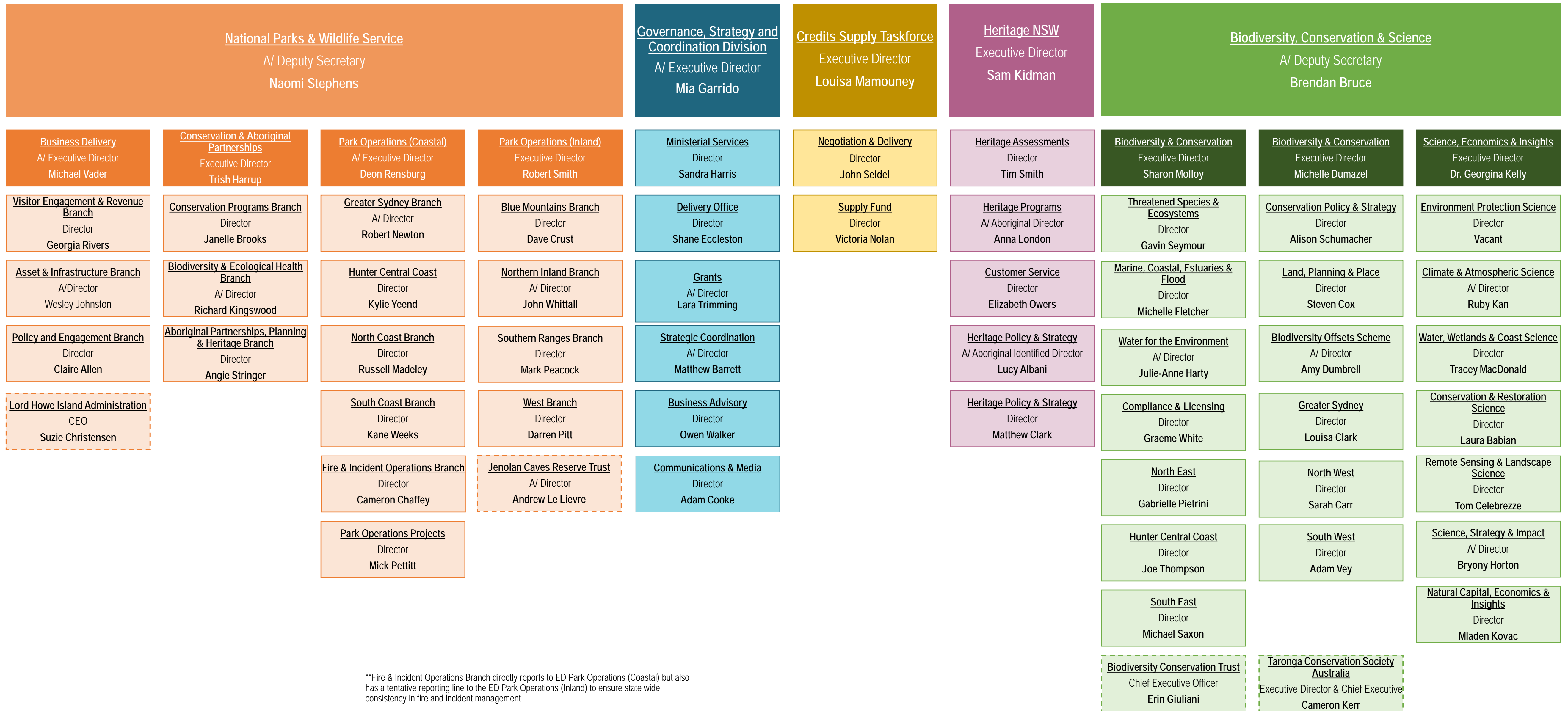


# Environment and Heritage Group EHG Executive Structure

**Environment & Heritage**  
A/ Coordinator-General  
Atticus Fleming



\*\*Fire & Incident Operations Branch directly reports to ED Park Operations (Coastal) but also has a tentative reporting line to the ED Park Operations (Inland) to ensure state wide consistency in fire and incident management.