



vegetation

NSW Native Vegetation REPORT CARD

July to December 2009



Environment,
Climate Change
& Water

The *Native Vegetation Report Card* is a regularly published report that contains the latest information about conservation, restoration or revegetation, management and clearing of native vegetation in NSW.

It has been routinely released in the form of the *Native Vegetation Report Card*, which is available at www.environment.nsw.gov.au/vegetation/.

This report card is the eighth since commencement of the *Native Vegetation Act 2003* and contains information about native vegetation activities in NSW from July to December 2009. Figure 1 is a graph of the area of native vegetation that has been conserved, restored or revegetated, managed and approved for clearing between July to December 2009. The detailed data in Table 1 and Figure 2 is itemised in six-monthly intervals from January 2006 to December 2009.

The activities presented include new licences, agreements and declarations but *not* change in on-ground extent. Change in on-ground extent is monitored in parallel by way of satellite monitoring. When studied together, both the activities and the change in on-ground extent constitute a picture of what is happening in relation to native vegetation throughout NSW.

The latest statistics have been gathered collaboratively between the Department of Environment, Climate Change and Water NSW (DECCW), catchment-management authorities (CMAs), Industry & Investment NSW (I&I NSW), the Land and Property Management Authority (LPMA), and Forests NSW. Most of the data is taken from DECCW's databases. Please note that individual CMAs collect revegetation and management data in varying formats. Compiling this data across all CMAs to produce state-wide figures has its limitations, so please consider the data to be an estimate only. Category descriptions are set out at the end of this report card.

Figure 1 Area of native vegetation that has been conserved, restored, managed or approved for clearing from July to December 2009. *Note:* The data in Figure 1 has been rounded up or down to the nearest 10 hectares.

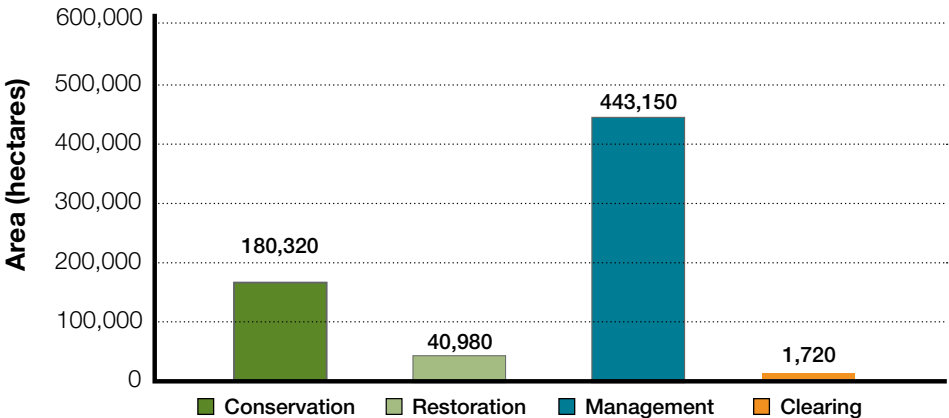
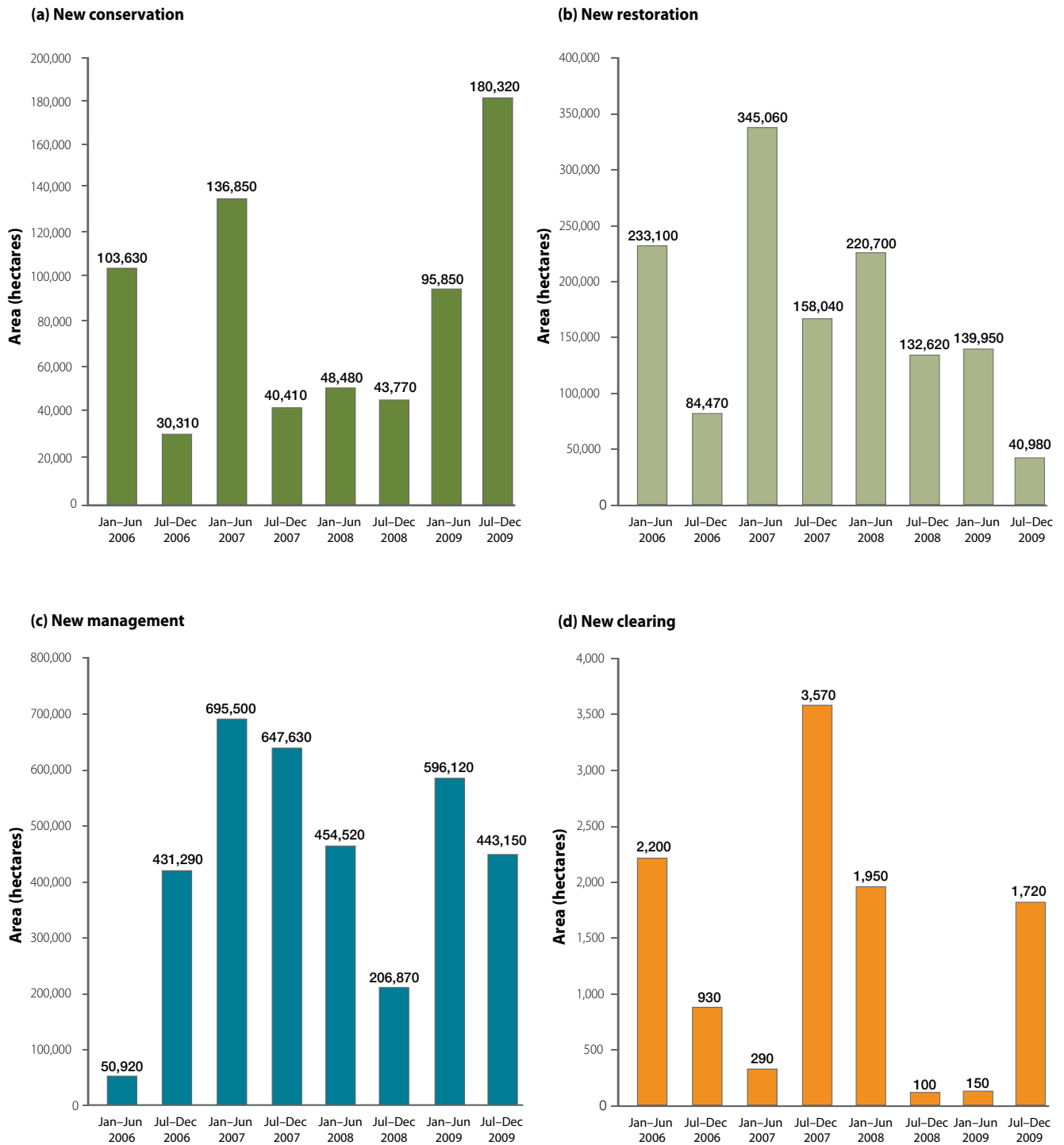


Figure 2 The area of native vegetation that has been conserved, restored, managed or approved for clearing from January 2006 to December 2009. *Note:* The graphs have *different scales*. For a detailed breakdown of the figures contributing to the cumulative data, please see Table 1.



Categories

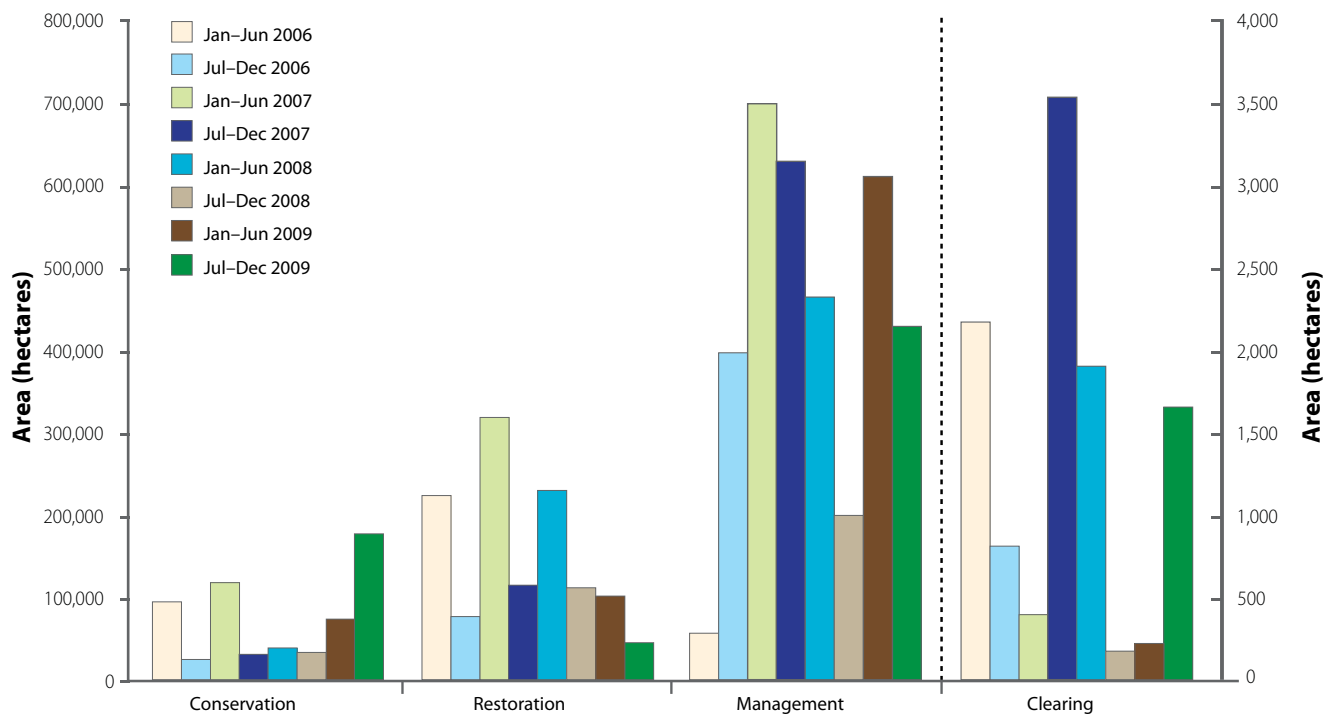
Table 1 Six-monthly records of native vegetation activities in NSW from January 2006 to December 2009.
 Note: The figures in Table 1 have been rounded up or down to the nearest 10 hectares.

	Area (hectares)							
	Jan-Jun 2006	Jul-Dec 2006	Jan-Jun 2007	Jul-Dec 2007	Jan-Jun 2008	Jul-Dec 2008	Jan-Jun 2009	Jul-Dec 2009
New conservation areas								
Public-reserve system: national park estate	26,610	25,550	129,710	35,070	18,360	18,470	24,380	20,980
Public-reserve system: flora reserves	0	0	0	2,730	0	0	0	0
Private conservation areas: voluntary conservation agreements	3,030	3,760	60	790	1,310	250	29,410	400
Private conservation areas: conservation covenants	4,200	910	6,910	480	26,980	24,670	38,730	154,460
Private conservation areas: wildlife refuges	69,790	90	170	120	60	140	40	270
Private conservation areas: Property Vegetation Plans (PVPs) in perpetuity (includes conservation PVPs and some incentive PVPs)	0	0	0	1,220*	1,770*	240*	2,290*	4,190
Private conservation areas: BioBanking Agreements	-	-	-	-	-	-	-	0
TOTAL	103,630	30,310	136,840	40,410*	48,480*	43,770*	94,850*	180,320
New restoration/revegetation of native vegetation								
Incentive PVPs (minus PVPs in perpetuity)	19,690*	14,100*	52,240*	83,000*	82,750*	690*	102,590*	23,780
PVP offsets	1,080	2,790*	1,950*	7,400*	4,870*	130*	550*	6,840
Native plantations	4,790	3,510	12,380	7,190	25,060	7,570	3,880	480
Revegetation through other incentives (non-PVP)	76,170	59,540	254,010	54,950	98,950	119,320	32,590	9,530
Retained as a condition of approval to clear: <i>Plantations and Reafforestation Act 1999</i> and <i>Native Vegetation Conservation Act 1997</i>	3,390	3,030	3,900	5,260	8,090	1,310	300	350
Wildlife refuges: habitat restored	127,980	0	3,810	130	10	10	40	0
Natural regeneration: excluding invasive native scrub	Not available	1,500	16,770	110	970	3,590	0	0
TOTAL	233,100*	84,470*	345,060*	158,040*	220,700*	132,620*	139,950*	40,980
New management of native vegetation								
Invasive native scrub PVPs	41,160*	106,990*	413,830*	376,540*	256,900*	134,080*	218,570*	325,500
Thinning to benchmark PVPs	10	580	440	70	290	120	220	690
Public-forest estate	1,110	-720	-2,550	-11,850	470	-7,000	2,530	40
Private native forestry on state-protected land	7,700	9,440	7,140	5,440	0	0	0	0
Private native forestry PVPs	-	-	-	31,300*	58,390*	66,510*	73,470*	35,400
Improved rangeland management	Not available	286,730	Not available	119,870	109,080	Not available	300,280	12,470
Weed-removal programs	940	28,270	276,640	126,260	29,390	13,160	1,050*	69,050
TOTAL	50,920*	431,290*	695,500*	647,630*	454,520*	206,870*	596,120*	443,150
New clearing of native vegetation								
Clearing PVPs approved where environmental outcomes maintained or improved	40	330*	50*	3,370	1,610*	3*	120	1,720
Clearing under <i>Native Vegetation Conservation Act 1997</i>	2,010	500	0	10	0	0	0	0
Clearing under <i>Plantation and Reafforestation Act 1999</i>	150	100	240	190	310	100	30	0
Clearing under local government RAMAs	-	-	0	0	0	1*	0	0
TOTAL	2,200*	930*	290*	3,570	1,950	100	150	1,720

Note: * denotes that this figure has been modified since the last Report Card (mostly due to a data cleanse within PADACS).

Figure 3 Area of native vegetation that has been conserved, restored, managed or approved for clearing from January 2006 to December 2009.

Note that clearing is at a *different scale* to the other categories.



Category descriptions

All data from DECCW sources unless otherwise stated.

New conservation areas

- **Public-reserve system: national-park estate** New national parks, nature reserves and state conservation areas, or additions to national parks, nature reserves and state conservation areas.
- **Public-reserve system: flora reserves** Data from Forests NSW.
- **Private conservation areas: voluntary conservation agreements** Areas of new voluntary conservation agreements under the *National Parks and Wildlife Act 1974*.
- **Private conservation areas: conservation covenants** Areas of new conservation agreements imposed during the conversion of leasehold land to freehold land in the Central and Eastern Division and managed by the LPMA.
- **Private conservation areas: wildlife refuges – habitat retained** Areas of new wildlife refuges under the *National Parks and Wildlife Act 1974*. These areas are managed exclusively for conservation of wildlife habitat.
- **Private conservation areas: PVPs in perpetuity** PVPs protecting areas of native vegetation in perpetuity, including Conservation PVPs and some Incentive PVPs.
- **Private conservation areas: BioBanking agreements** The Biodiversity Banking and Offsets Scheme (BioBanking) protects and improves biodiversity and, after landowners have sold their biodiversity credits, provides annual management payments in perpetuity.

New restoration/revegetation of native vegetation

- **Incentive PVPs** Area of revegetation or restoration of native vegetation as set out in an Incentive PVP (excluding Incentive PVPs in perpetuity).
- **PVP offsets** Area of offsets negotiated in a PVP. Offsets are actions that a landholder agrees to in order to balance any negative impacts of clearing.
- **Native plantations** Plantable area includes plantations of native species only. Sourced from I&I NSW.
- **Revegetation through other incentives** Revegetation activities conducted by CMAs through funding sources other than PVPs. Sourced from CMAs.
- **Retained as a condition of approval to clear: *Plantations and Reforestation Act 1999* and *Native Vegetation Conservation Act 1997*** Area of land retained as a condition of clearing consent; includes vegetation-clearing approvals and plantation authorisations. Sourced from DECCW and I&I NSW.
- **Wildlife refuges: habitat restored** Areas integrating conservation into other land-use activities, which also provides wildlife habitat; for example, grazing on native unimproved grasslands/rangelands/woodlands.
- **Natural regeneration, excluding invasive native species** Sourced from CMAs.

New management of native vegetation

- **Invasive native scrub PVPs** Area authorised under a PVP, to manage invasive native scrub; the term used to describe native plant species that have spread rapidly within their natural range.
- **Thinning to benchmark PVPs** Area of land to be cleared to improve the quality of the vegetation using thinning provisions of the Environmental Outcomes Assessment Methodology.
- **Public-forest estate** Area of new state forest, or the reduction of state forest through the conversion to national park estate. Data supplied by Forests NSW.
- **Private native forestry on state-protected land** Areas of native forest on state-protected land approved for timber harvesting and silviculture that does not significantly degrade native forests.
- **Private native forestry (PNF) PVPs** Area under a PVP for timber harvesting and often silviculture within a native forest. PNF Code of Practice commenced operation in August 2007.
- **Improved rangeland management** Improvement of native vegetation through management and incentive projects involving control of grazing pressure by feral goats and domestic stock through erecting fencing or controlling access to water. Sourced from CMAs.
- **Weed-removal programs** Area of land to be cleared of exotic weeds for environmental improvement. Sourced from DECCW and CMAs.

New clearing of native vegetation

- **Clearing PVPs approved where environmental outcomes maintained or improved, includes isolated paddock trees** Area of land where clearing approved under a PVP will 'improve or maintain' environmental outcomes. The impact of clearing is measured against four environmental values: water quality, soils, salinity and biodiversity (including threatened species).
- **Clearing under *Native Vegetation Conservation Act 1997*** Area approved for clearing under the *Native Vegetation Conservation Act 1997*.
- **Clearing under *Plantations and Reforestation Act 1999*** Area of land approved for clearing under the *Plantations and Reforestation Act 1999*. Sourced from I&I NSW.
- **Clearing under local government Routine Agricultural Management Activities (RAMAs)** Area of land permitted for clearing under the *Native Vegetation Act 2003* for essential local government infrastructure.

Data sources

All data is from DECCW sources unless otherwise stated. Forests NSW provided data on 11 January 2010; I&I NSW provided information about plantations on 4 January 2010; and information was collected for the public-reserve system on 2 February 2010, private conservation areas (voluntary conservation agreements and wildlife refuges) on 4 February 2010, and PNF PVPs on 4 February 2010. LPMA provided information on conservation covenants on 11 January 2010. Data was taken from the *Native Vegetation Conservation Act 1997* application database VegNet2 on 16 February 2010 and the *Native Vegetation Act 2003* application database PADACS on 16 February 2010. CMAs provided data from 14 January to 10 February 2010.

Data limitations and exclusions

The statistics do not include clearing carried out under exemptions or alleged illegal clearing. The statistics include only DECCW, I&I NSW, CMA, LPMA and Forests NSW data. They do not include data from other agencies or external organisations.

Published by: Department of Environment, Climate Change and Water NSW, 59–61 Goulburn Street, PO Box A290, Sydney South 1232.
Ph: (02) 9995 5000 (switchboard). Ph: 131 555 (environment information and publications requests).
Ph: 1300 361 967 (national parks information and publications requests). Fax: (02) 9995 5999. TTY: (02) 9211 4723.
Email: info@environment.nsw.gov.au Website: www.environment.nsw.gov.au
DECCW 2010/585. ISBN 978 1 74232 850 8. August 2010.