

**Operational Guidelines**

- Refer to Strategy for Fire Management 2003 and Fire Management Manual 2005.  
 Brief all personnel involved in suppression operations on the following issues:
- General**
- The use of bombing aircraft should support containment operations by aggressively attacking hotspots and spot-overs.
  - The use of bombing aircraft without the support of ground based suppression crews should be limited to very specific circumstances.
  - Where practicable foam should be used to increase the effectiveness of the water.
  - Ground crews must be alerted to water bombing operations.
- Aerial Water Bombing**  
 NPWS PMA 2.2.3.4.1 (2007)  
 NPWS PMA 2.2.3.4.2 (2007)
- Aerial Ignition**  
 NPWS PMA 2.2.3.4.4 (2007)  
 NPWS PMA 2.2.3.4.5 (2007)
- Backburning**  
 NPWS PMA 4.8
- Command & Control**  
 NPWS PMA 4.2
- Containment Lines**  
 NPWS PMA 2.2.3.3.6
- Earthmoving Equipment**  
 NPWS PMA 2.2.3.4.3
- Fire Advantage Recording**
- Fire Suppression Chemicals**  
 NPWS PMA 2.2.3.4.4.5
- Rehabilitation**  
 NPWS PMA 5.1
- Smoke Management**  
 NPWS PMA 4.1
- Visitor Management**  
 NPWS PMA 3.1.1.5

**Aboriginal Cultural Heritage**

- Aboriginal Cultural Heritage**  
 NPWS PMA 4.1.1
- Brief all personnel involved in containment line construction and/or vehicle based fire suppression operations, on site locations and the required management strategies appropriate to the site type.
  - In the case of Aboriginal heritage, ensure close liaison with the relevant Sites Officer in order to check for and identify new sites.
  - As far as possible protect site from fire.
  - Do not cut down trees.
  - Use of fumes, wetting agents & retardant is acceptable.
  - As far as possible protect site from fire.
  - Avoid ground disturbance including hard tools, dozers.
  - Avoid water bombing which may cause ground disturbance.
  - Avoid ground disturbance including hard tools, dozers.
  - Avoid water bombing which may cause ground disturbance.
  - Site may be burnt by wildfire, backburn, prescribed burn.
- \*NPWS Regional Cultural Heritage Management Strategy
- If an area that is a heritage site or is a water body, wetland or coastal, non-forest or wetland it is to be used.
  - Earthmoving machinery is to be used around other than overhead assets.

**Historic Heritage Management**

- Historic Heritage Management**  
 NPWS PMA 4.1.6
- High RCHMS\* priority.
  - Avoid fire, including wildfire, backburning & HR.
  - Avoid all water bombing activities.
  - High RCHMS\* priority.
  - Avoid fire, including wildfire, backburning & HR.
  - High or low RCHMS\* priority.
  - Heritage site unlikely to be affected by fire.
  - Danger to any fire crew activity. Avoid site at all costs.
  - Low RCHMS\* priority.
  - Avoid fire, including wildfire, backburning & HR.
  - Avoid all water bombing activities.
  - Low RCHMS\* priority.
  - Avoid fire, including wildfire, backburning & HR.
  - High or low RCHMS\* priority.
  - Heritage site unlikely to be affected by fire.
  - Avoid use of earth moving machinery.
  - High or low RCHMS\* priority.
  - Heritage site unlikely to be affected by fire.
  - Avoid use of earth moving machinery.
  - Avoid all water bombing activities.

**Threatened Fauna Management**

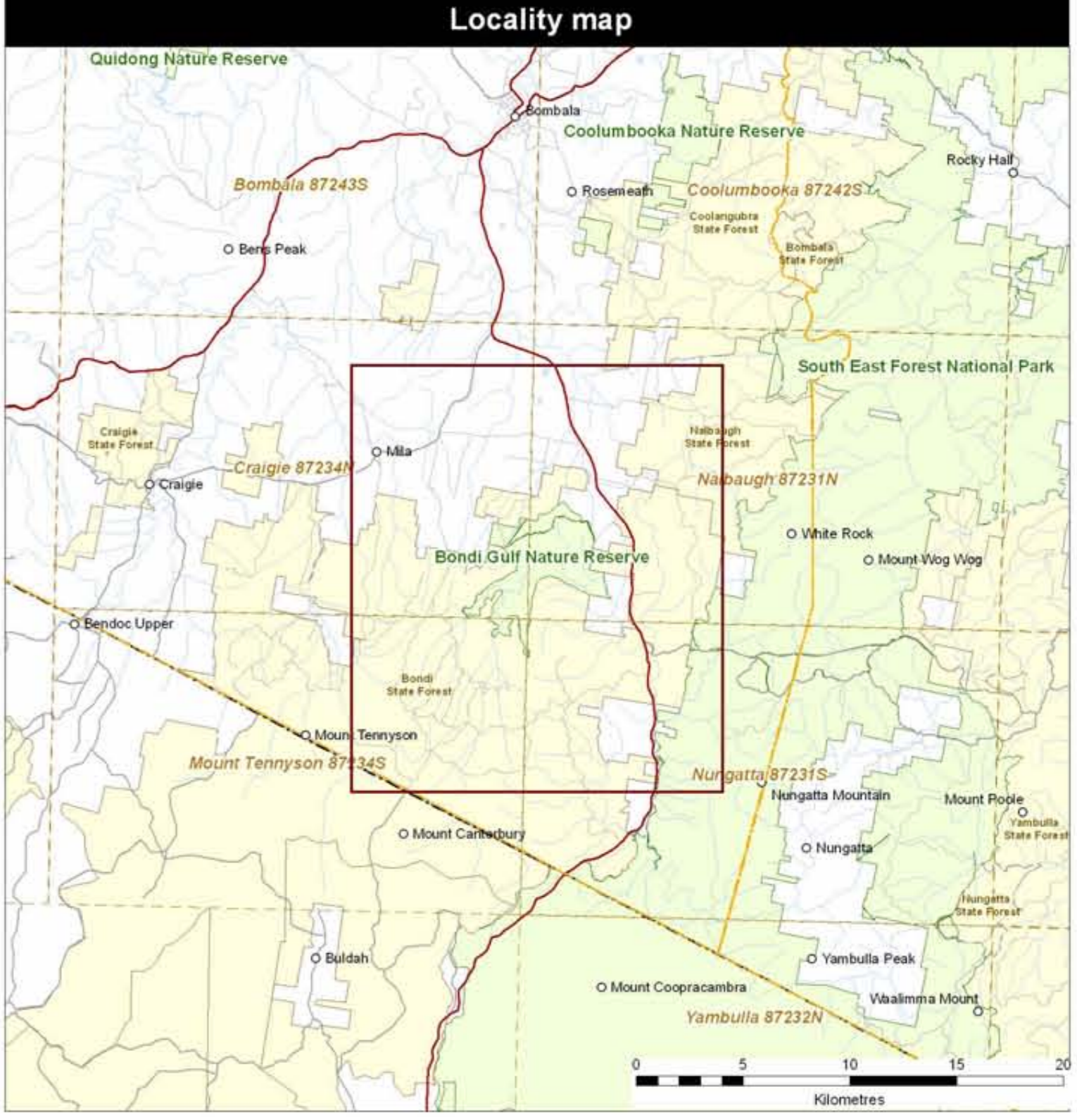
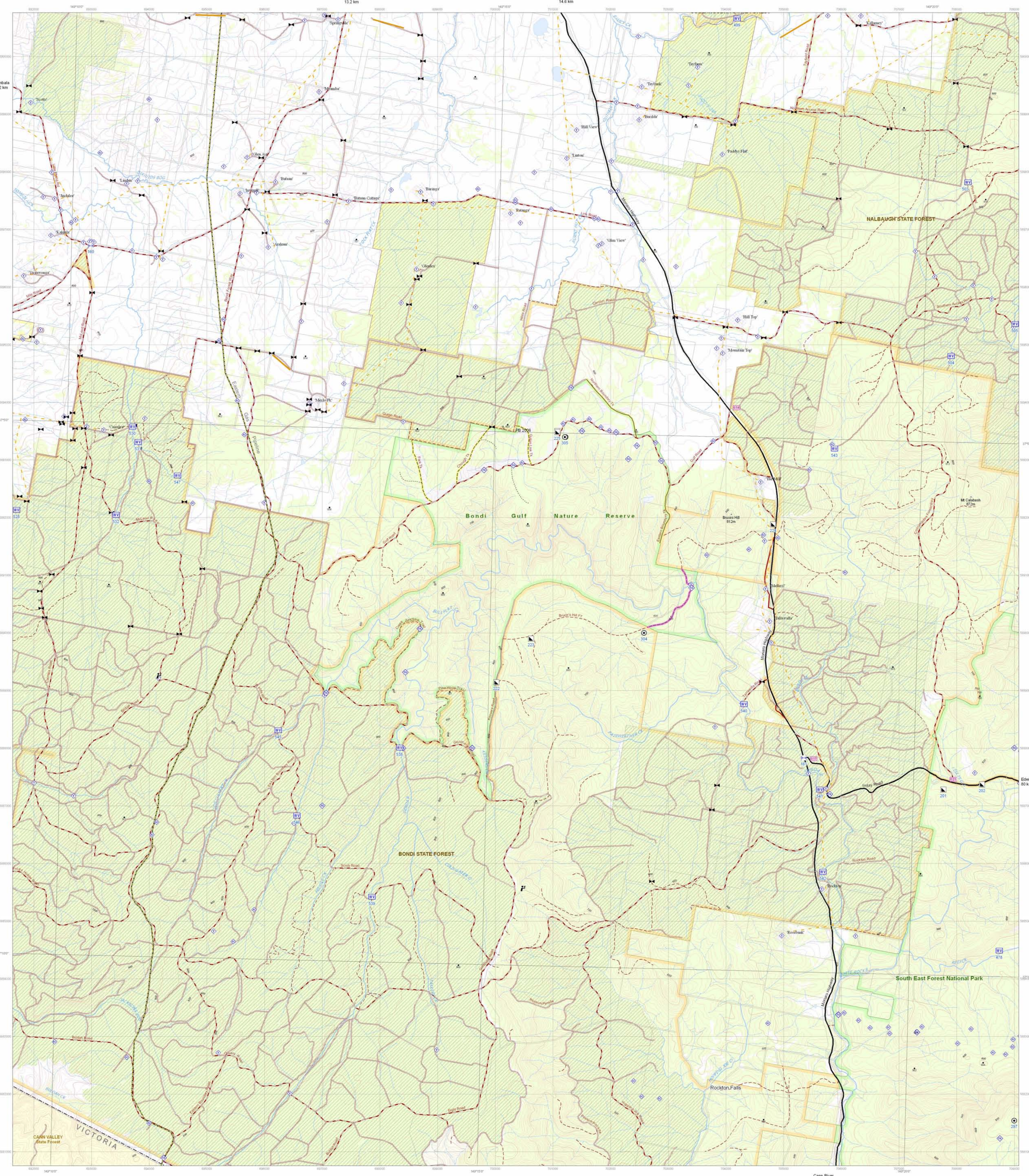
- Threatened Fauna Management**  
 NPWS PMA 4.2.1.5.2
- Brief all personnel involved in containment line construction and/or vehicle based fire suppression operations, on site locations and the required management strategies appropriate to the site type.
  - Where practical, protect habitat areas and trees from the fire if the effects of the resulting fire frequency, season or intensity will have a significant or unknown impact.
  - Protect large and hollow bearing trees.
  - Protect large and hollow bearing trees.
  - Avoid interfire intervals of < 10 yrs.
  - Avoid high intensity fires that consume tree canopies and fallen logs.
  - Avoid interfire intervals of < 10 yrs.
  - Habitat unlikely to be affected by fire.
  - Avoid use of earth moving machinery in wetland habitats.
  - Avoid use of retardant and foam in wetland habitats.
  - Habitat unlikely to be affected by fire.
  - Avoid use of earth moving machinery in dune habitats.
  - Avoid fire, including wildfire, backburning & HR, as far as possible in wetland habitat.
  - Avoid use of earth moving machinery in wetland habitats.
  - Avoid use of retardant and foam in wetland habitats.
  - Avoid high intensity fires that consume tree canopies and fallen logs.
  - Avoid fire, including wildfire, backburning & HR, as far as possible.
  - Avoid use of earth moving machinery.
  - The reserve has threatened fauna include yellow-bellied glider (Petaurus australis), eastern pygmy possum (Cercartetus naxos), pink-footed owl (Ninox strenua) and olive whistler (Pachycephala olivacea).
  - Potential habitat exists in the reserve (i.e. logs, spotted-gallant gum, mistletoe, oak, pine robin and giant wattlebird) log.

**Threatened Flora Management**

- Threatened Flora Management**  
 NPWS PMA 4.1.2
- Brief all personnel involved in containment line construction and/or vehicle based fire suppression operations, on site locations and the required management strategies appropriate to the site type.
  - Where practical, protect populations and/or individuals from fire if the fire frequency threshold has been exceeded, or the species is an obligate seeder, or if the fire frequency threshold and/or fire response category is unknown.
  - Where possible, protect old growth habitat trees.
  - Avoid interfire intervals of < 10 yrs.
  - Avoid use of earthmoving machinery.
  - Avoid the use of retardant.
  - Avoid fire, including wildfire, backburning & HR, as far as possible.
  - Avoid the use of earthmoving machinery.
  - Avoid the use of retardant.
  - Avoid high intensity fire.
  - Avoid interfire intervals < 10 years, effect unknown.
  - Avoid the use of earth moving machinery.
  - Avoid summer fire.
  - Avoid high intensity fire.
  - Avoid earth-moving machinery.
  - Avoid low intensity fire.
  - Avoid interfire intervals of < 5 yrs.
  - Avoid earth-moving machinery.
  - Avoid the use of retardant.
  - A patch of montane heath, dominated by Allocasuarina nana, exists on the higher ridges in the north of the reserve and extends into private property.

**Threatened Property**

- Where possible property owners with assets at risk from a wildfire event should be kept informed regarding the progress of the fire, and asked for an assessment of their current level of asset protection preparedness.



**Contact Information**

Agency	Position / Location	Phone
NSW National Parks & Wildlife Service (Dept. of Environment & Climate Change)	Regional Duty Officer	0428 345 789
	Bombala Office (office hours)	(02) 6458 4290
	NPWS Incident Response Answering Service (after hours)	1800 629 104
Forests NSW	Bombala	(02) 6458 3177
	Eden	(02) 6496 1500
NSW Rural Fire Service	Bombala Fire Control Office	(02) 6458 3033
	Fire Control Officer	0419 598 375
SES	Emergency	13 25 00
	Bombala Headquarters	(02) 6458 3765
NSW Fire Brigade	Emergency	000
	Bombala station	(02) 6458 3011
Police	Emergency	000
	Bombala station	(02) 6458 3444
Ambulance	Emergency	000
	Bombala station	13 12 33
Hospital	Bombala	(02) 6458 3166
	Delegate	(02) 6458 8008
Council	Bombala Shire Council	(02) 6458 8008
		(02) 6458 3555

**Communications Information**

Service	Channel	Location and Comments
VHF Communications (NPWS Two Way Radios)	28	Bombala Trig
	29	Letts Mountain
UHF-PMR (RFS Two Way Radios)	40	Thoko - New Line
	63	Stovers Hill
	64	M Delegate
Mobile Phone		3G coverage was variable at the time of preparation of this strategy.

**Fire Control Advantages**

Index	Type	Easting	Northing	Index	Type	Easting	Northing
160	Assembly Area	692968	5896716	503	Water Point Vehicle	708198	5897819
161	Assembly Area	705351	5887832	504	Water Point Vehicle	707803	5894804
201	Dozer unloading ramp	707770	5887280	505	Water Point Vehicle	709016	5895359
202	Dozer unloading ramp	708440	5887370	528	Water Point Vehicle	691701	5892135
221	Dozer unloading ramp	701080	5893500	530	Water Point Vehicle	693710	5893579
222	Dozer unloading ramp	700020	5891400	531	Water Point Vehicle	693808	5893312
223	Dozer unloading ramp	700620	5899900	532	Water Point Vehicle	693423	5892049
224	Dozer unloading ramp	704820	5891880	538	Water Point Vehicle	698342	5888011
225	Dozer unloading ramp	701080	5893480	539	Water Point Vehicle	697863	5885423
245	Fire tower	694170	5892620	540	Water Point Vehicle	703413	5888787
247	Fire tower	700480	5885570	541	Water Point Vehicle	705629	5887283
297	Helipad (not maintained)	709000	5881540	542	Water Point Vehicle	705683	5885858
303	Helipad (not maintained)	701220	5893400	543	Water Point Vehicle	705881	5893197
304	Helipad (not maintained)	702580	5890000	545	Water Point Vehicle	696238	5886312
305	Helipad (not maintained)	701210	5893400	546	Water Point Vehicle	696559	5886332
478	Water Point Vehicle	708740	5884490	547	Water Point Vehicle	694490	5892732
499	Water Point Vehicle	704193	5900661				

**Legend**

	Threatened fauna		Refuge Area		Elevation contours
	Threatened flora		Water Point Vehicle		10 metre
	Neighbouring asset		Water Point Helicopter		100 metre
	Aboriginal sites (AHIMS)		Helipad		High point
	European sites (EHIMS)		Helipad (not maintained)		Spot height
	Powerline		Fire tower/Observation point		Water features
	Built-up area		Heavy vehicle turn-around		River/creek
	Eastern Gas Pipeline		Dozer unloading ramp		Watercourse (perennial)
	On-park access (BFCC class)		Assembly Area		Watercourse (intermittent)
	Essential		Staging Area		Dam
	Important		Airstair		NPWS estate
	Dormant		Landing ground		State Forest
	Trail capacity		Off-park access		Crown land
	Cat 1		Major sealed road		Cadastral
	Cat 7		Minor sealed road		Vegetation cover
	Cat 9		All weather unsealed track		Grassland/Pasture
	Walking Track		Dry weather only track		Heathland/Woodland
	Gate		4WD track		Forest/Rainforest
	Travel time from Rosemeath				

Grid Interval 1000m  
 Scale 1:25,000  
 Projection: UTM, Datum: AGD66, Zone: 55