

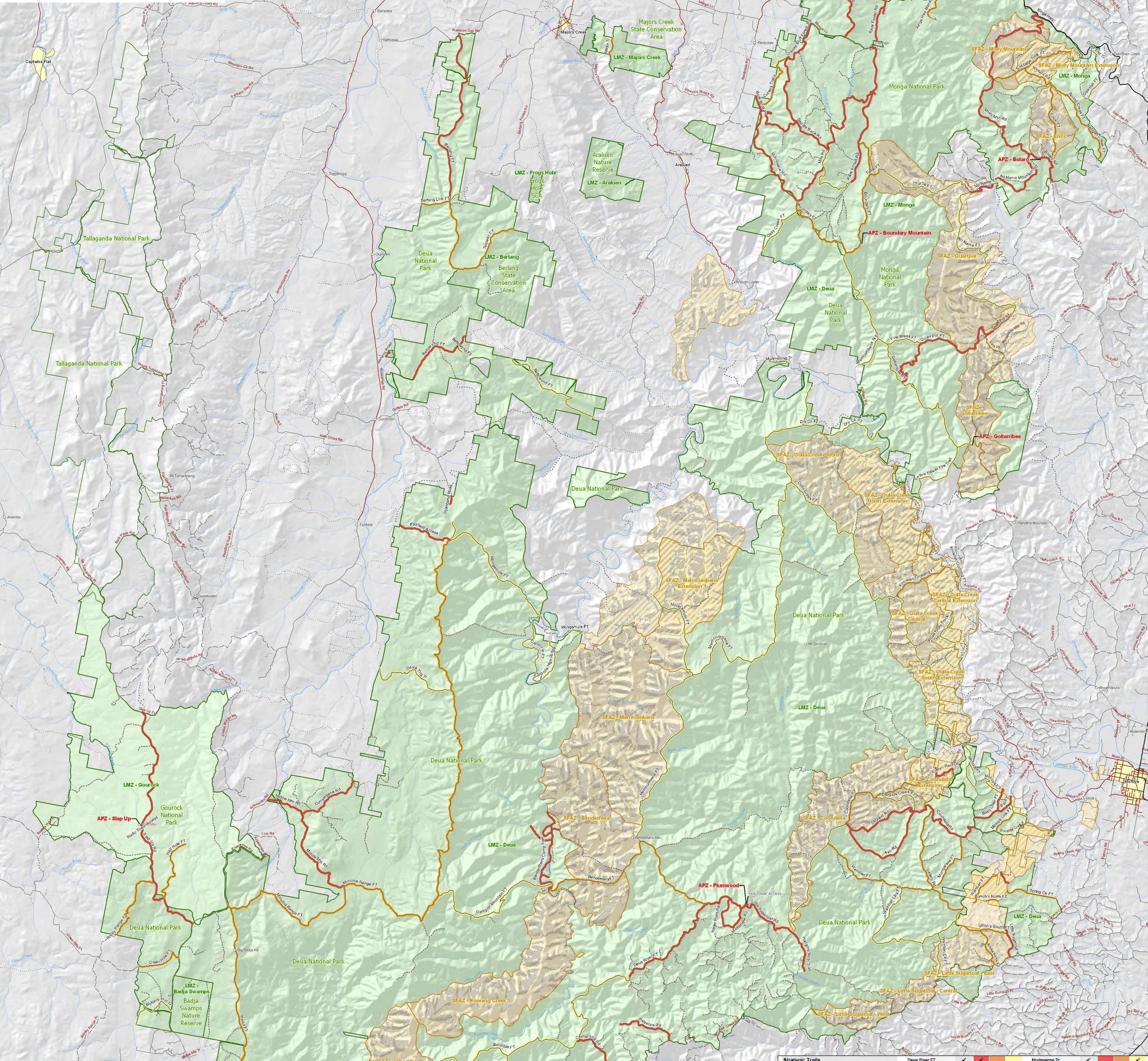
Fire Management Zones

Asset Protection Zones The objective of APZs is the protection of human life and property. This will have precedence over guidelines for the management of biodiversity. Maintain Overall Fuel Hazard at Moderate or below.

Strategic Fire Advantage Zones The objective of SFAZs is to reduce fire intensity across larger areas. Maintain Overall Fuel Hazard at High or below, however adherence to guidelines for biodiversity will take precedence where practical.

Land Management Zones The objective of LMZs is to conserve biodiversity and protect cultural and historic heritage. Manage fire consistent with fire thresholds.

A substantial area of Deua NP was burnt by Bushfires during 2002/3 & 2003/4. The bushfires were high intensity in some parts after prolonged drought period. Not all Strategic Fire Advantage Zones (SFAZs) are suitable for hazard reduction burning when prescribed by Overall Fuel Hazard levels and fire threshold times. This is due to the time required for appropriate recovery and seed bank re-establishment which is not adequately reflected in the current thresholds for SFAZs. Some vegetation communities may be slower to recover and re-establish which could require an upper end threshold or fire free period to recover more fully.



Legend

Fire Management Zone

- Asset Protection Zone
- Strategic Fire Advantage Zone
- Land Management Zone
- Complementary SFAZ
- High potential areas within SFAZ
- Built area
- Watercourse
- River
- Creek

BFCC fire trail class

- Essential
- Important
- Dominant

Fire trail capacity

- Cat 1
- Cat 7
- Cat 9

Access standard

- Highway / Major Road
- Sealed Road
- Unsealed Road
- 4WD Trail
- Management Trail
- Private Property Trail
- Closed Road

Strategic Trails

Trails will be maintained to the BFCC Fire Vehicle category standards as detailed below:

Trail name	Fire Vehicle Standard			Deua River FT	Mudlong Tr
	Essential	Cat 7	Cat 9		
Adams FT	✓	✓	✓	✓	✓
Andersons FT	✓	✓	✓	✓	✓
Anembo Rd	✓	✓	✓	✓	✓
Ash Rd	✓	✓	✓	✓	✓
Baby Chair FT	✓	✓	✓	✓	✓
Badja FT	✓	✓	✓	✓	✓
Belamba FT	✓	✓	✓	✓	✓
Bendabara FT	✓	✓	✓	✓	✓
Bendabara Camp Tr	✓	✓	✓	✓	✓
Berlang FT	✓	✓	✓	✓	✓
Berlang Link FT	✓	✓	✓	✓	✓
Betwond FT (part)	✓	✓	✓	✓	✓
Betwond FT (part)	✓	✓	✓	✓	✓
Bib FT	✓	✓	✓	✓	✓
Bolan Rd	✓	✓	✓	✓	✓
Book Book Tr	✓	✓	✓	✓	✓
Boundary FT (part)	✓	✓	✓	✓	✓
Boundary FT (part)	✓	✓	✓	✓	✓
Blyton's Hut Tr	✓	✓	✓	✓	✓
Buckymba FT	✓	✓	✓	✓	✓
Cabbage Tree FT	✓	✓	✓	✓	✓
Canoodle FT	✓	✓	✓	✓	✓
Canoodle High Ridge	✓	✓	✓	✓	✓
Copall FT	✓	✓	✓	✓	✓
Conerang Rd	✓	✓	✓	✓	✓
Coondella FT	✓	✓	✓	✓	✓
Coondella Rd	✓	✓	✓	✓	✓
Curambene Rd	✓	✓	✓	✓	✓
Cullers Tr	✓	✓	✓	✓	✓
Dampier Mountain FT	✓	✓	✓	✓	✓
Daryuna Tr	✓	✓	✓	✓	✓
Dead End Tr	✓	✓	✓	✓	✓
Deua River FT	✓	✓	✓	✓	✓
Donalds Creek FT	✓	✓	✓	✓	✓
Downfall FT	✓	✓	✓	✓	✓
Dry CK FT	✓	✓	✓	✓	✓
Elces FT	✓	✓	✓	✓	✓
Everly Head Dr	✓	✓	✓	✓	✓
Farfield Access	✓	✓	✓	✓	✓
Fire Break FT	✓	✓	✓	✓	✓
Fire Trail Access	✓	✓	✓	✓	✓
Galley Rd	✓	✓	✓	✓	✓
Garra Creek Rd	✓	✓	✓	✓	✓
Gollarbee FT	✓	✓	✓	✓	✓
Gravels Bluff Fossil Rd	✓	✓	✓	✓	✓
Green Hills FT	✓	✓	✓	✓	✓
Hungry Man FT	✓	✓	✓	✓	✓
Kings Hay Mgmt Tr	✓	✓	✓	✓	✓
Knowles Crossing FT	✓	✓	✓	✓	✓
Leik Road	✓	✓	✓	✓	✓
Little Sugarloaf Rd	✓	✓	✓	✓	✓
Lynth's South FT	✓	✓	✓	✓	✓
Lynth's North FT	✓	✓	✓	✓	✓
Majoor Tr	✓	✓	✓	✓	✓
Maccasarie Rd	✓	✓	✓	✓	✓
McIntombers FT	✓	✓	✓	✓	✓
Messerae Rd	✓	✓	✓	✓	✓
Middle Mtn Rd	✓	✓	✓	✓	✓
Mio Rd (part)	✓	✓	✓	✓	✓
Mio Rd (part)	✓	✓	✓	✓	✓
Munna Range FT (part)	✓	✓	✓	✓	✓
Munna Range FT (part)	✓	✓	✓	✓	✓
Munna Range FT (part)	✓	✓	✓	✓	✓
Milly Mtn Rd	✓	✓	✓	✓	✓
Mongaloon FT	✓	✓	✓	✓	✓
Mongaloon River Tr	✓	✓	✓	✓	✓
Munya FT	✓	✓	✓	✓	✓
Munya Link FT	✓	✓	✓	✓	✓
Mungah Tr	✓	✓	✓	✓	✓
Namangah FT (part)	✓	✓	✓	✓	✓
Namangah FT (part)	✓	✓	✓	✓	✓
Nelligan Creek FT	✓	✓	✓	✓	✓
No Name FT	✓	✓	✓	✓	✓
No Name Mountain Rd	✓	✓	✓	✓	✓
Northern FT	✓	✓	✓	✓	✓
Northern FT (part)	✓	✓	✓	✓	✓
Oake Creek FT	✓	✓	✓	✓	✓
Oake Creek FT	✓	✓	✓	✓	✓
Quart Post Rd	✓	✓	✓	✓	✓
Robbooa FT	✓	✓	✓	✓	✓
River Fossil Rd	✓	✓	✓	✓	✓
River FT	✓	✓	✓	✓	✓
River FT	✓	✓	✓	✓	✓
Roski Cully Track	✓	✓	✓	✓	✓
Saddle Back Rd	✓	✓	✓	✓	✓
Serpent Rd	✓	✓	✓	✓	✓
Shonout FT	✓	✓	✓	✓	✓
Slap Up Rd	✓	✓	✓	✓	✓
Spring CK FT (part)	✓	✓	✓	✓	✓
Talbar FT	✓	✓	✓	✓	✓
Turbo FT (part)	✓	✓	✓	✓	✓
Turbo FT (part)	✓	✓	✓	✓	✓
Warban CK FT	✓	✓	✓	✓	✓
Warban FT	✓	✓	✓	✓	✓
Warban Link FT	✓	✓	✓	✓	✓
Warbanuoa Tr	✓	✓	✓	✓	✓
Wata Puddr Rd	✓	✓	✓	✓	✓
Watters Rd	✓	✓	✓	✓	✓
Walla Creek FT	✓	✓	✓	✓	✓
Woodleigh FT	✓	✓	✓	✓	✓
Wyandene Rd	✓	✓	✓	✓	✓
Yellow Power FT	✓	✓	✓	✓	✓