

# Northern Tablelands Region Linton NR Fire Management Strategy (Type 2) 2005 Sheet 1 of 1



This strategy should be used in conjunction with aerial photography and field reconnaissance during incidents and the development of incident action plans.

These data are not guaranteed to be free from error or omission. The NSW National Parks and Wildlife and its employees disclaim liability for any act done on the information in the data and any consequences of such acts or omissions.

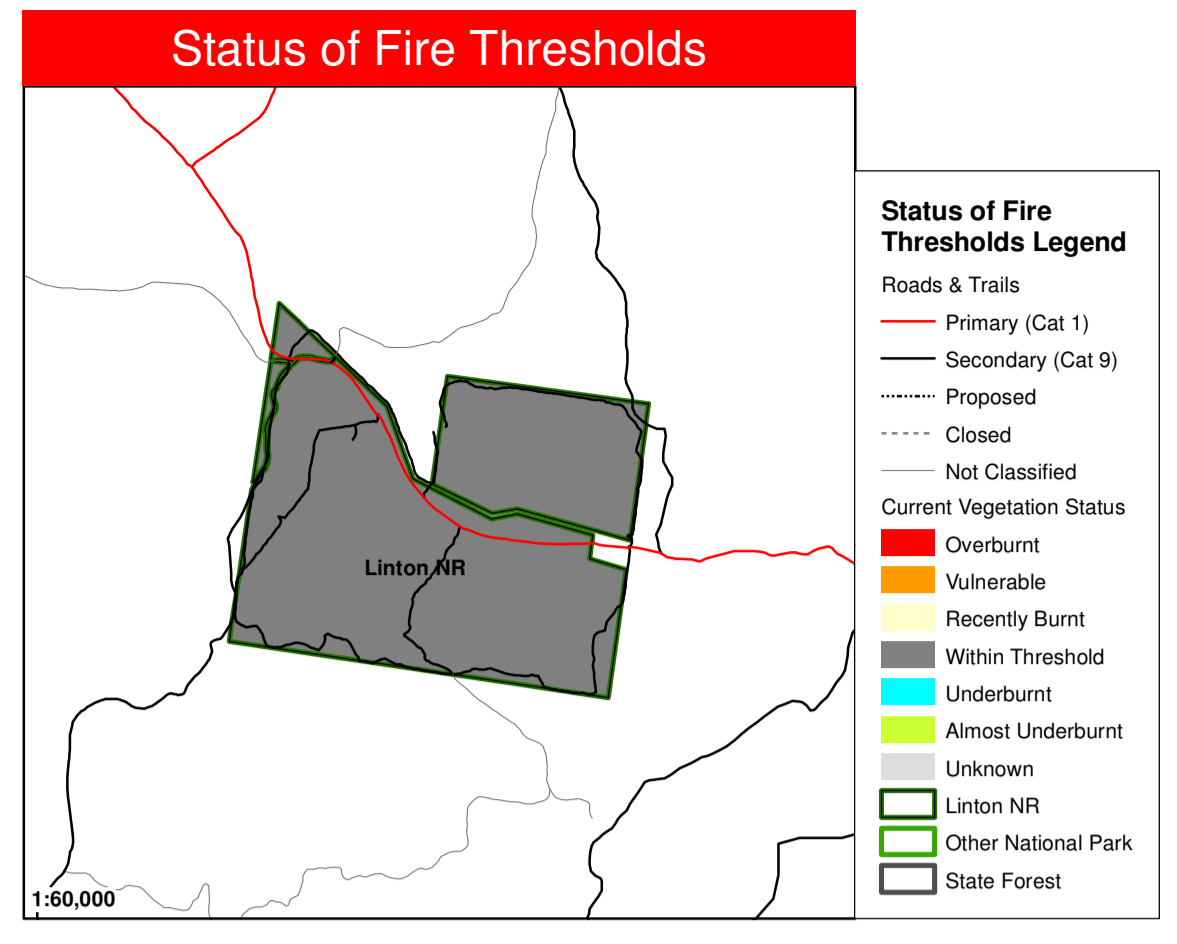
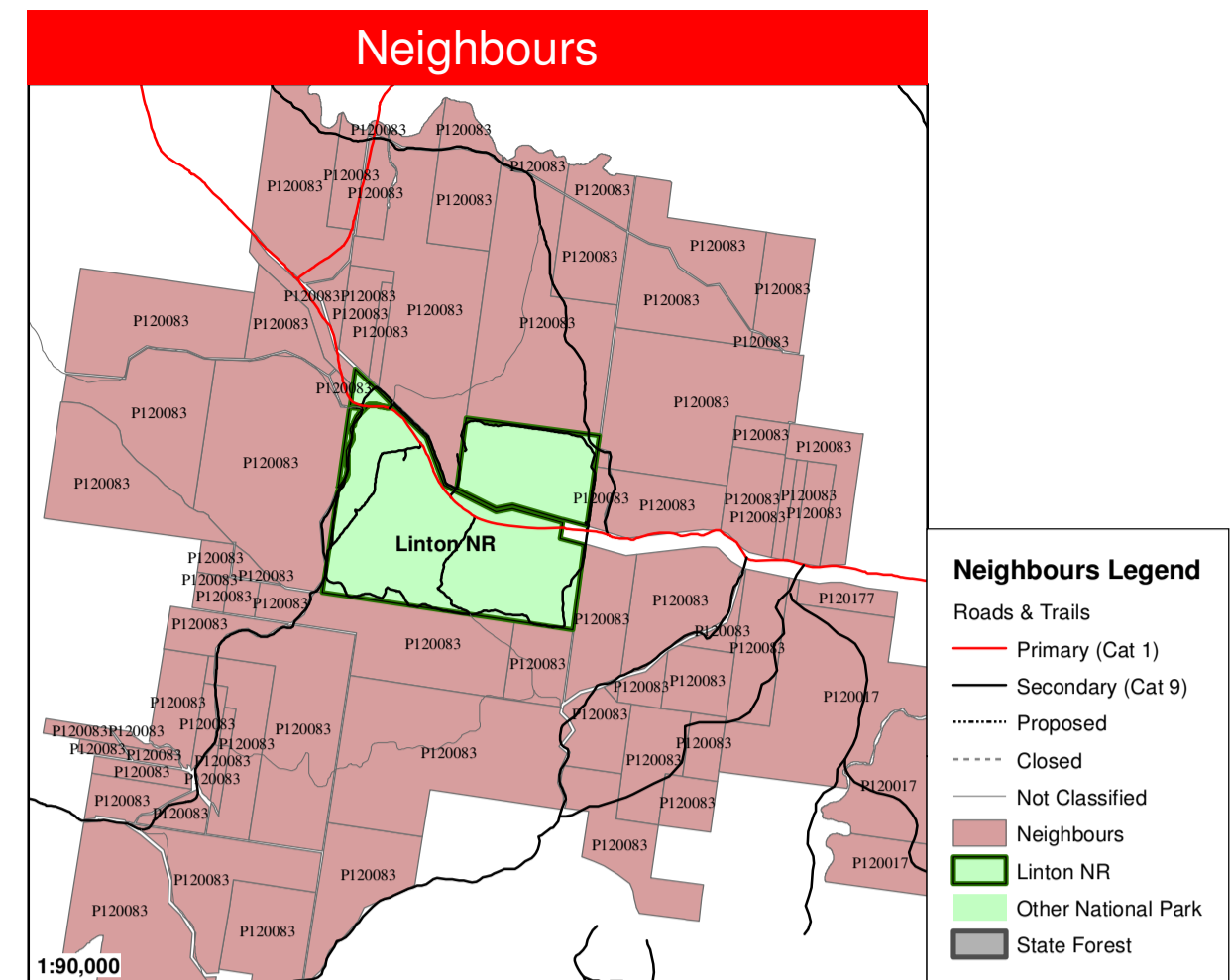
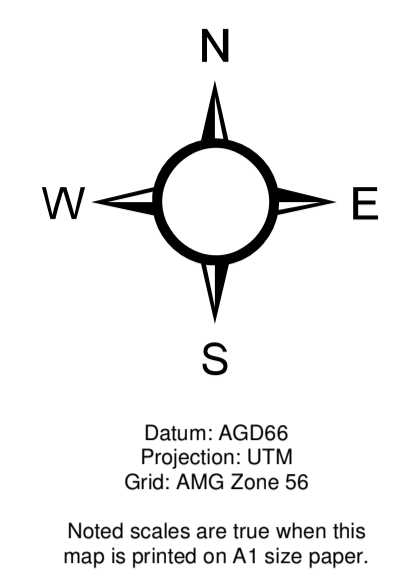
This document is copyright. Apart from any fair dealing for the purpose of study, research criticism or review, as permitted under the copyright Act, no part may be reproduced by any process without written permission.

The NSW National Parks and Wildlife Service is part of the Department of Environment and Conservation. Published by the Department of Environment and Conservation (NSW), December 2005. Contact: NSW National Parks and Wildlife Service, Northern Tablelands Region PO Box 402 Armidale NSW 2350.

ISBN: 1 74137 579 7    DEC Number: 2005/458    Last Updated: 6 Dec 2005

Department of Environment and Conservation (NSW)    This strategy is a relevant Plan under Section 38 (4) and Section 44 (3) of Rural Fires Act 1997.

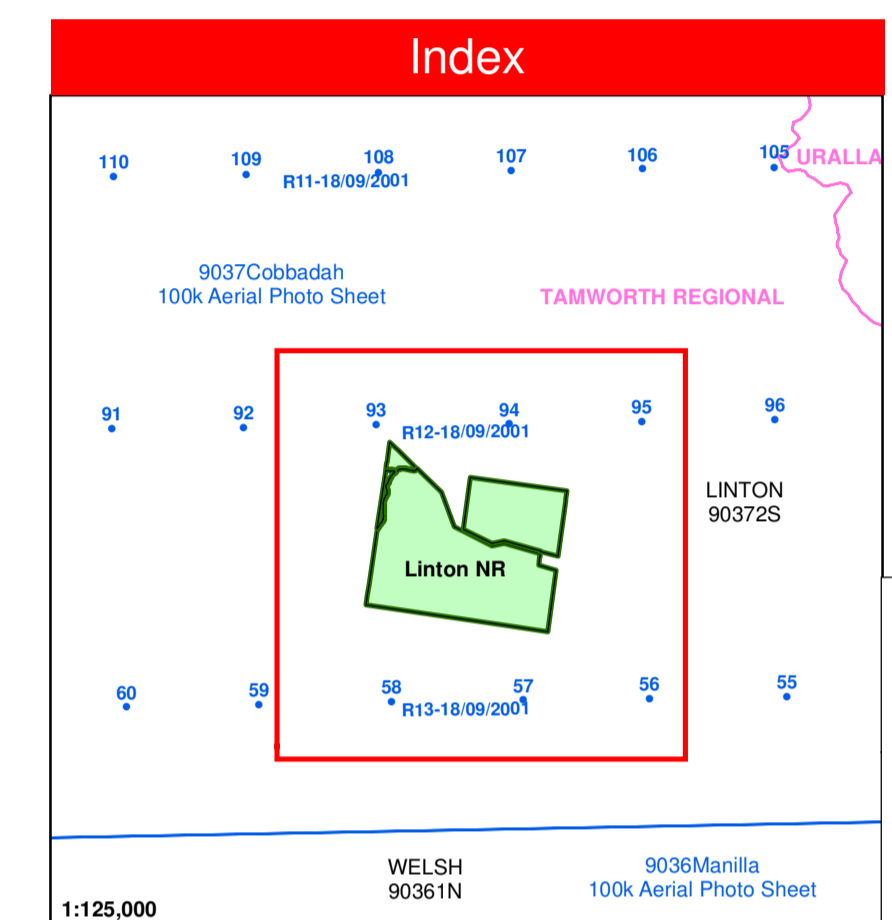
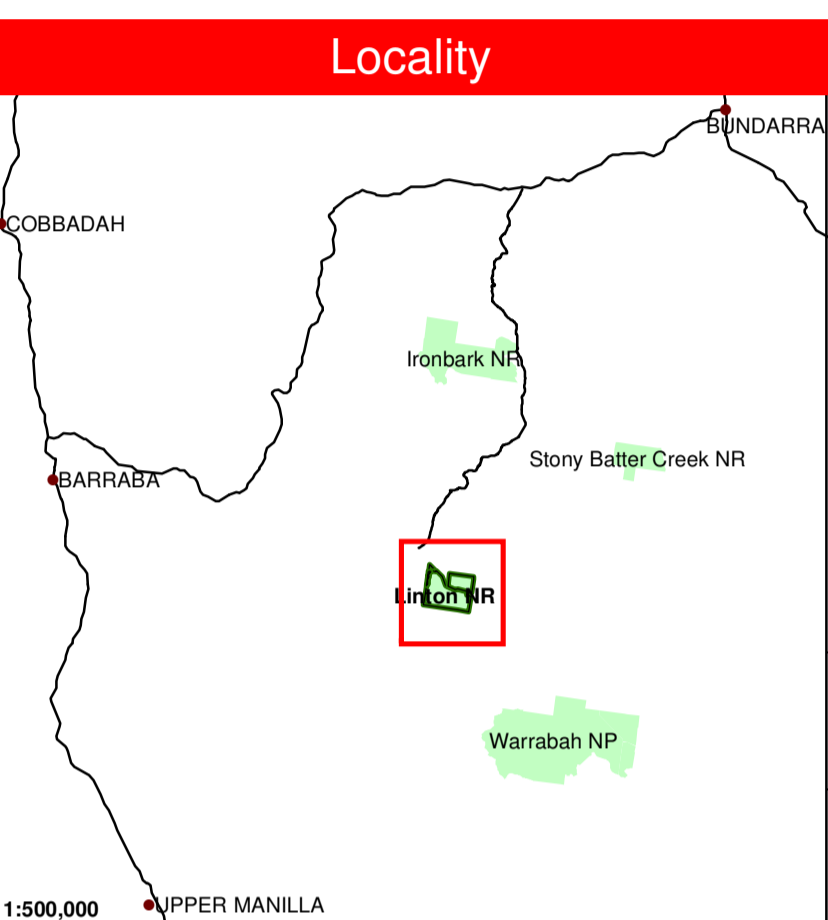
Approved Date: 29 Dec 2005



### Operational Guidelines

Refer to Strategy for Fire Management 2003 and Fire Management Manual 2004. Brief all personnel involved in suppression operations on the following issues:

Resource	Guidelines
<b>Aboriginal Cultural Heritage Site Management</b> (NPWS FMM 4.11)	Aboriginal sites are not indicated on this strategy. For information on Aboriginal sites contact the Aboriginal Heritage Conservation Officer or Local Aboriginal Land Council.
<b>Historic Heritage Management</b> (NPWS FMM 4.10)	Site is difficult to see on ground (old sawmill site). Inform dozer operators to avoid approximate location if working in area.
<b>Threatened Fauna Management</b> (NPWS FMM 4.12 & 5.2)	<ul style="list-style-type: none"> <li>There are a large number of threatened fauna species, occurring throughout the planning area, that are not indicated on this strategy. For information on threatened fauna, consult the NPWS Atlas of NSW Wildlife.</li> <li>Brief all personnel involved in containment line construction &amp;/or vehicle based fire suppression operations, on site locations and the required management strategies appropriate to the site type.</li> <li>Where practicable, protect habitat areas and trees from the fire if the effects of the resulting fire frequency, season &amp;/or intensity will have a significant or unknown impact.</li> </ul>
<b>Threatened Flora Management</b> (NPWS FMM 4.12)	<ul style="list-style-type: none"> <li>Brief all personnel involved in containment line construction &amp;/or vehicle based fire suppression operations, on site locations and the required management strategies appropriate to the site type.</li> <li>Where practicable, protect populations or individuals from fire if the fire frequency threshold has been exceeded, or the species is an obligate seeder (fire response category), or if the fire frequency threshold &amp;/or fire response category is unknown.</li> <li>Where possible, protect old growth habitat trees.</li> </ul>
<b>Threatened Property</b>	No property in close proximity to reserve.
<b>General</b>	<b>Guidelines</b>
<b>Aerial Water Bombing</b> (NPWS FMM 4.4 / NSW Fire Agencies Aviation SOPs O2 / NPWS Guidelines for Effective Aircraft Management)	<ul style="list-style-type: none"> <li>The use of bombing aircraft should support containment operations by aggressively attacking hotspots and spot-overs.</li> <li>The use of bombing aircraft without the support of ground based suppression crews should be limited to very specific circumstances.</li> <li>Where practicable foam should be used to increase the effectiveness of the water.</li> <li>Ground crews must be alerted to water bombing operations.</li> </ul>
<b>Aerial Ignition</b> (NPWS FMM 4.2.20 & 4.4 / NSW Fire Agencies Aviation SOPs O2-4 / NPWS Guidelines for Effective Aircraft Management)	<ul style="list-style-type: none"> <li>Aerial ignition may be used during back-burning or fuel reduction operations where practicable, but only with the prior consent of a senior NPWS officer.</li> <li>Utilise incendiaries to rapidly progress back-burns down slope where required.</li> </ul>
<b>Backburning</b> (NPWS FMM 4.8)	<ul style="list-style-type: none"> <li>Temperature and humidity trends must be monitored carefully to determine the safest times to implement back-burns. Generally, when the FDI is Very High or greater, backburning should commence when the humidity begins to rise in the late afternoon or early evening. With a lower FDI backburning may be safely undertaken during the day.</li> <li>Where practicable, clear a 1m radius around dead and fibrous barked trees adjacent to containment lines prior to backburning, or wet down these trees as part of the backburn ignition.</li> <li>Brief all involved personnel on the location of cultural sites and threatened species prior to backburning, and adhere to the above guidelines.</li> </ul>
<b>Command &amp; Control</b> (NPWS FMM 4.2)	<ul style="list-style-type: none"> <li>The first combatant agency on site may assume control of the fire, but then must ensure the relevant land management agency is notified promptly.</li> <li>On the arrival of other combatant agencies, the initial incident controller will consult with regard to the ongoing command, control and incident management team requirements as per the relevant BFMC Plan of Operations.</li> </ul>
<b>Containment Lines</b> (NPWS FMM 2.2 & 3.9)	<ul style="list-style-type: none"> <li>Construction of new containment lines should be avoided, where practicable, except where they can be constructed with minimal environmental impact. New containment lines require the prior consent of a senior NPWS officer.</li> <li>Where practicable, containment lines should be stabilised and rehabilitated as part of the wildfire suppression operation.</li> <li>All containment lines not required for other purposes should be closed at the cessation of the incident.</li> <li>All personnel involved in containment line construction should be briefed on both natural and cultural heritage sites in the location.</li> </ul>
<b>Earthmoving Equipment</b> (NPWS FMM 4.2.20 & 4.3)	<ul style="list-style-type: none"> <li>Earthmoving equipment may only be used with the prior consent of a senior NPWS officer, and then only if the probability of its success is high.</li> <li>Earthmoving equipment must be always guided and supervised by an experienced officer, and accompanied by a support vehicle. When engaged in direct or parallel attack this vehicle must be a firefighting vehicle.</li> <li>Containment lines constructed by earthmoving equipment should consider the protection of drainage features, observe the Threatened Species and Cultural Heritage Operational Guidelines, and be surveyed, where possible, to identify unknown cultural heritage sites.</li> <li>Earthmoving equipment should be washed down, where practicable, prior to it entering NPWS estate.</li> </ul>
<b>Fire Advantage Recording</b>	All fire advantages used during wildfire suppression operations must be mapped and where relevant added to the database.
<b>Fire Suppression Chemicals</b> (NPWS FMM 4.2.20 & 4.9)	<ul style="list-style-type: none"> <li>Wetting and foaming agents (surfactants) are permitted for use in wildfire suppression.</li> <li>The use of fire retardant is only permitted with the prior consent of the senior NPWS officer, and should be avoided where reasonable alternatives are available.</li> <li>Exclude the use of surfactants and retardants within 50m of rainforest, watercourses, dams and swamps.</li> <li>Areas where fire suppression chemicals are used must be mapped and the used products name recorded.</li> <li>The Threatened Species Operational Guidelines are to be observed.</li> </ul>
<b>Rehabilitation</b> (NPWS FMM 5.1)	Where practicable, containment lines should be stabilised and rehabilitated as part of the wildfire suppression operation.
<b>Smoke Management</b> (NPWS FMM 3.4)	<ul style="list-style-type: none"> <li>The potential impacts of smoke and possible mitigation tactics must be considered when planning for wildfire suppression and prescribed burning operations.</li> <li>If smoke becomes a hazard on local roads or highways, the police and relevant media must be notified.</li> <li>Smoke management must be in accordance with relevant RTA traffic management guidelines.</li> </ul>
<b>Visitor Management</b> (NPWS FMM 3.6 & 4.13)	The reserve may be closed to the public during periods of extreme fire danger or during wildfire suppression operations.



### Neighbour Information

For further information, please refer to the Regional Contacts database.

Map ID	Property Name	Surname	Firstname	Phone
P120017	Beulah			
P120083	Linton			
P120177	Stone Hut			

### Fire Thresholds

<b>Overburnt</b>	Fire thresholds have been exceeded. - Protect from fire as far as possible.
<b>Vulnerable</b>	The area will be Overburnt if it burns this year. - Protect from fire as far as possible.
<b>Recently Burnt</b>	Time since fire is less than the optimum interval, but before that it was within threshold. - Avoid fires if possible.
<b>Within Threshold</b>	Fire history is within the threshold for vegetation in this area. - A burn is neither required nor should one necessarily be avoided.
<b>Almost Underburnt</b>	The area is close to its threshold and may become underburnt with the absence of fire. - A prescribed burn may be advantageous. Consider allowing unplanned fires to burn.
<b>Underburnt</b>	Fire frequency is below fire thresholds in the area. - A prescribed burn may be advantageous. Consider allowing unplanned fires to burn.
<b>Unknown</b>	Insufficient data to determine fire threshold.

NB. Fire thresholds are defined for vegetation communities to conserve biodiversity

### Strategy Information

**Fire Season Information**

- Have been known to start as early as late August, but usually the potential for a large fire event is greatest between October and December. This period may extend into January in more severe years.
- During this period in dry seasons fires may exhibit high intensity behaviour under windy conditions.

**Prescribed Burning** (NPWS Fire Management Manual 4.7)

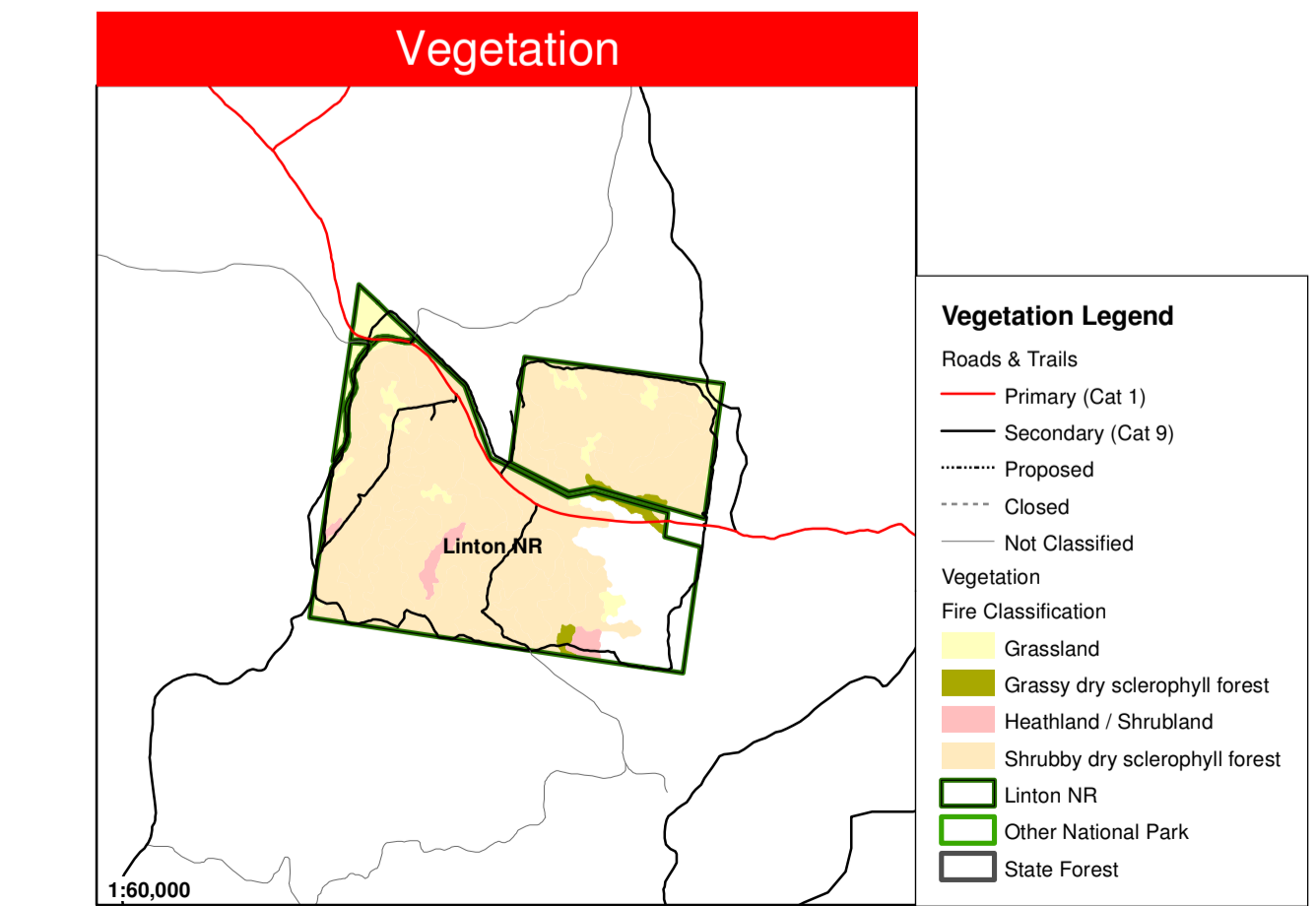
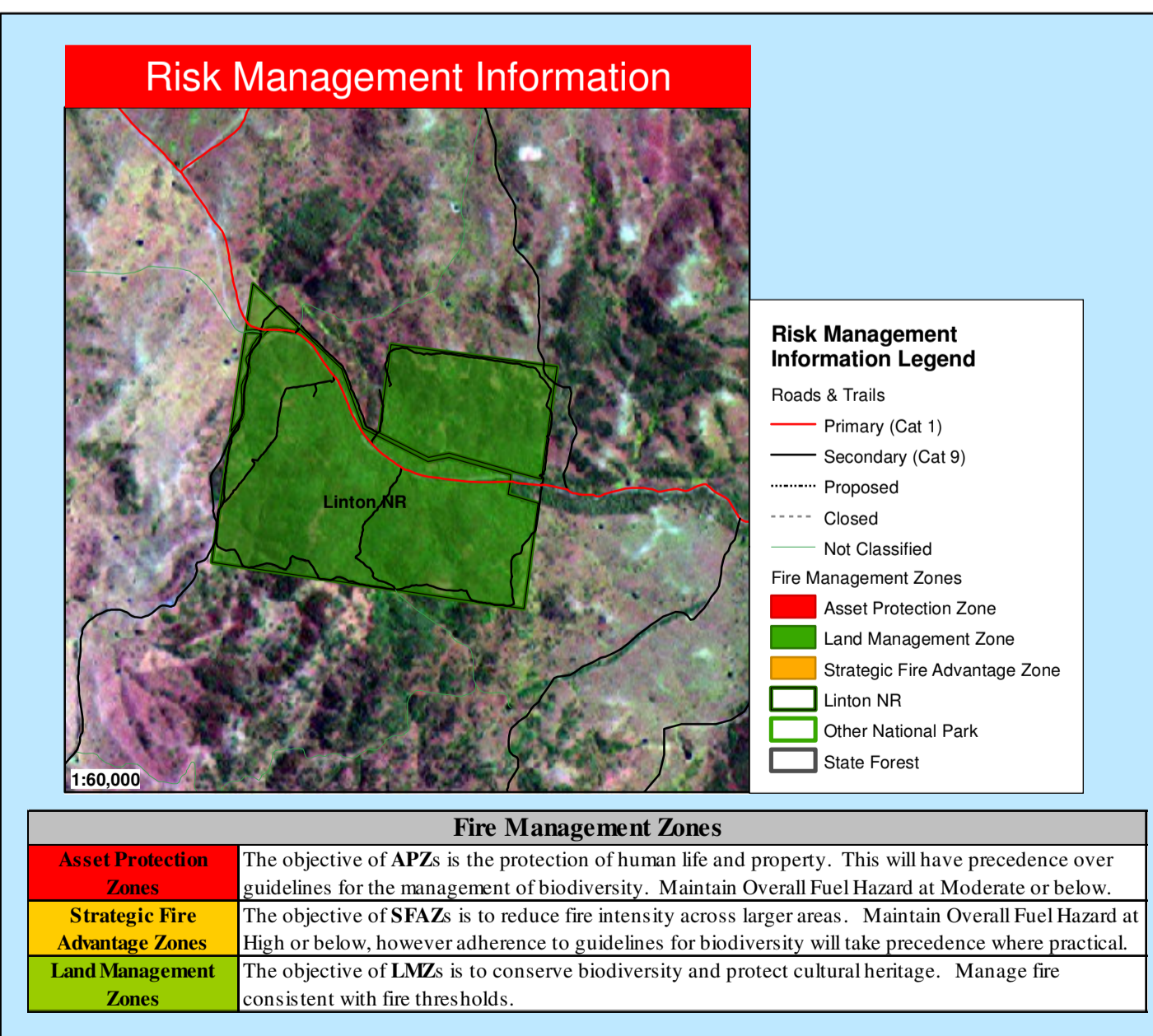
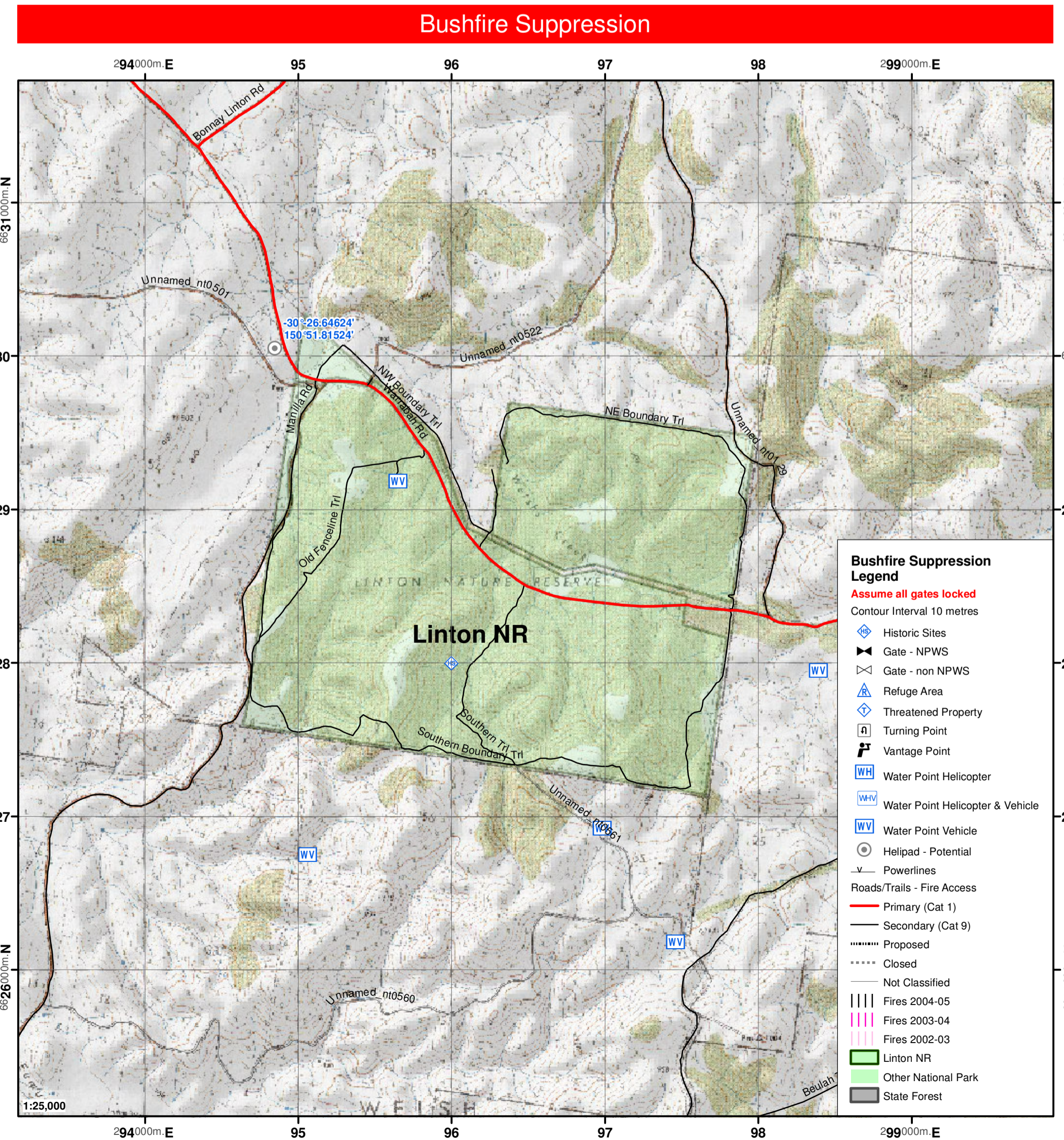
- General season is Autumn to late Winter. Burning is possible in early Spring but not desirable on a regular basis from an ecological or tourism point of view.

**Suppression Strategies**

Current FDR	Forecast FDR	Strategies
Low - Mod	Low - Mod	<ul style="list-style-type: none"> <li>Undertake direct, parallel or indirect attack along existing containment lines.</li> <li>Where practicable consider maximising the fire area in accordance with the requirements of any proposed prescribed burns.</li> </ul>
Low - Mod	=> High	<ul style="list-style-type: none"> <li>In order to minimise the fire area and secure the flanks as soon as possible, undertake direct, parallel or indirect attack along the closest containment lines.</li> <li>Pay particular attention to the flank on the next predicted down wind side.</li> </ul>
High	All	<ul style="list-style-type: none"> <li>Undertake indirect attack along existing or newly constructed containment lines.</li> <li>Secure and deepen containment lines along the next predicted downwind side of the fire.</li> <li>If applicable consider broader than normal containment strategies to avoid wasted effort and high risk of failure.</li> </ul>
All	All	<ul style="list-style-type: none"> <li>Ensure there is sufficient time to secure containment lines prior to the fire impacting upon them; otherwise fall back to the next potential line.</li> </ul>

### Contact Information

Agency	Position / Location	Phone	
DEC - NPWS	Regional Duty Officer	0428 345 789	
	Area Manager	02 6738 9117 0428 613 073	
	Fire Management Officer	02 6738 9140 (fax) 02 6776 0014 0409 220 613	
	Regional Operations Coordinator	02 6771 1894 (fax)	
	Armidale Area Office	02 6776 0007 02 6771 1894 (fax) 02 6738 9100	
	Regional Office	02 6738 9140 (fax) 02 6771 1894 (fax)	
	Aboriginal Heritage Conservation Officer - Armidale	02 6776 0038	
	Rural Fire Service	Emergency NE Duty Officer Armidale Fire Control Officer	000 02 6771 4619 02 6771 2400 02 6771 3380 (fax)
	NSW Fire Brigade	Emergency Tamworth Station	000 02 6762 2319
	SES	Emergency Tamworth Unit	000 02 6762 0711
Police	Emergency Bendemeer Station	000 02 6769 6544 02 6768 2805 (fax)	
Ambulance	Emergency Tamworth Station	000 13 1233	
Hospital	Tamworth	02 6766 1722	
DNR	Barwon Region	02 6764 5900	
DPI - Forests NSW	Inverell	02 6722 4200 02 6722 4200 (fax)	
Council	Tamworth Regional	02 6766 2908 02 6766 8154 (fax)	
Local Aboriginal Land Council (LALC)	Tamworth	02 6766 9028	



### Communications Information

Service	Channel	Location and Comments
NPWS - VHF	Ch 6 & 7	Little Duval & Melrose
NPWS - VHF (Fireground Comms)	18	Simplex vehicle to vehicle
NPWS - VHF (Portable Repeater)	15	Stored at Armidale/transportable
RFS - PMR - UHF	23	Manilla
	36	Tamworth
	53	Mt Salisbury
RFS - GRN	-	No service available in NTR
CB - UHF	-	Channel as appropriate
SF - VHF	-	Not applicable
Aircraft - VHF	119.10	-
Mobile Phone - CDMA	Yes -	on high ground with high gain antenna
Mobile Phone - GSM	No service	
Satellite Phone	0147 154 353 -	stored at Armidale NPWS