

Yarrobil National Park & Goodiman State Conservation Area Fire Management Strategy 2009

This strategy should be used in conjunction with aerial photography and field reconnaissance during incidents and the development of incident action plans.

This document is copyright. Apart from any fair dealing for the purpose of study, research criticism or review, as permitted under the copyright Act, no part may be reproduced by any process without written permission.

This strategy is a relevant Plan under Section 34 (a) and Section 44 (b) of Rural Fires Act 1997.

The NSW National Parks and Wildlife Service is part of the Department of Environment and Climate Change.

Published by the Department of Environment and Climate Change (NSW), May 2009.
Contact: NPWS Mudgee 1160 or Mudgee NSW 2650.

Date Approved: 30/06/2009

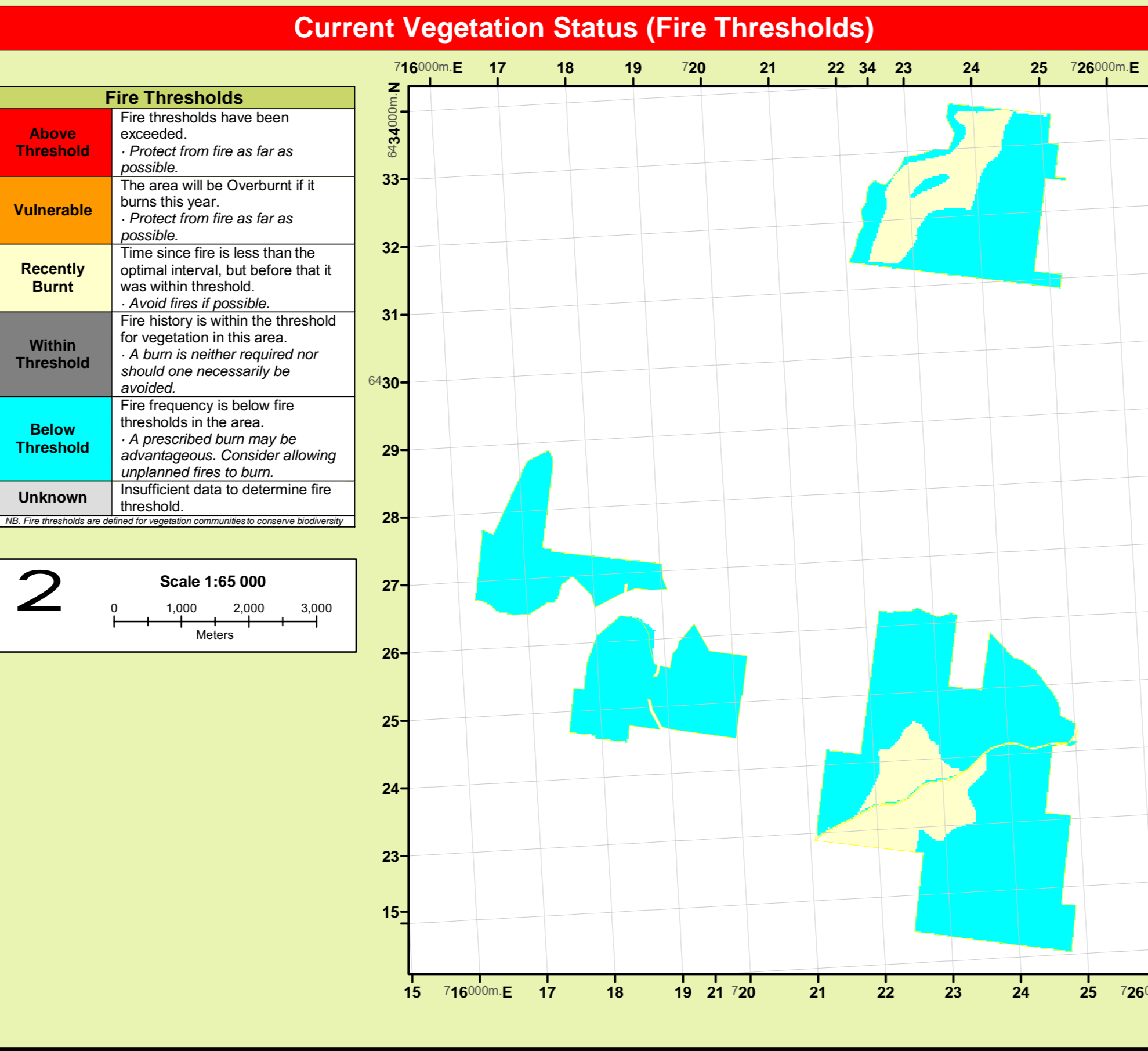
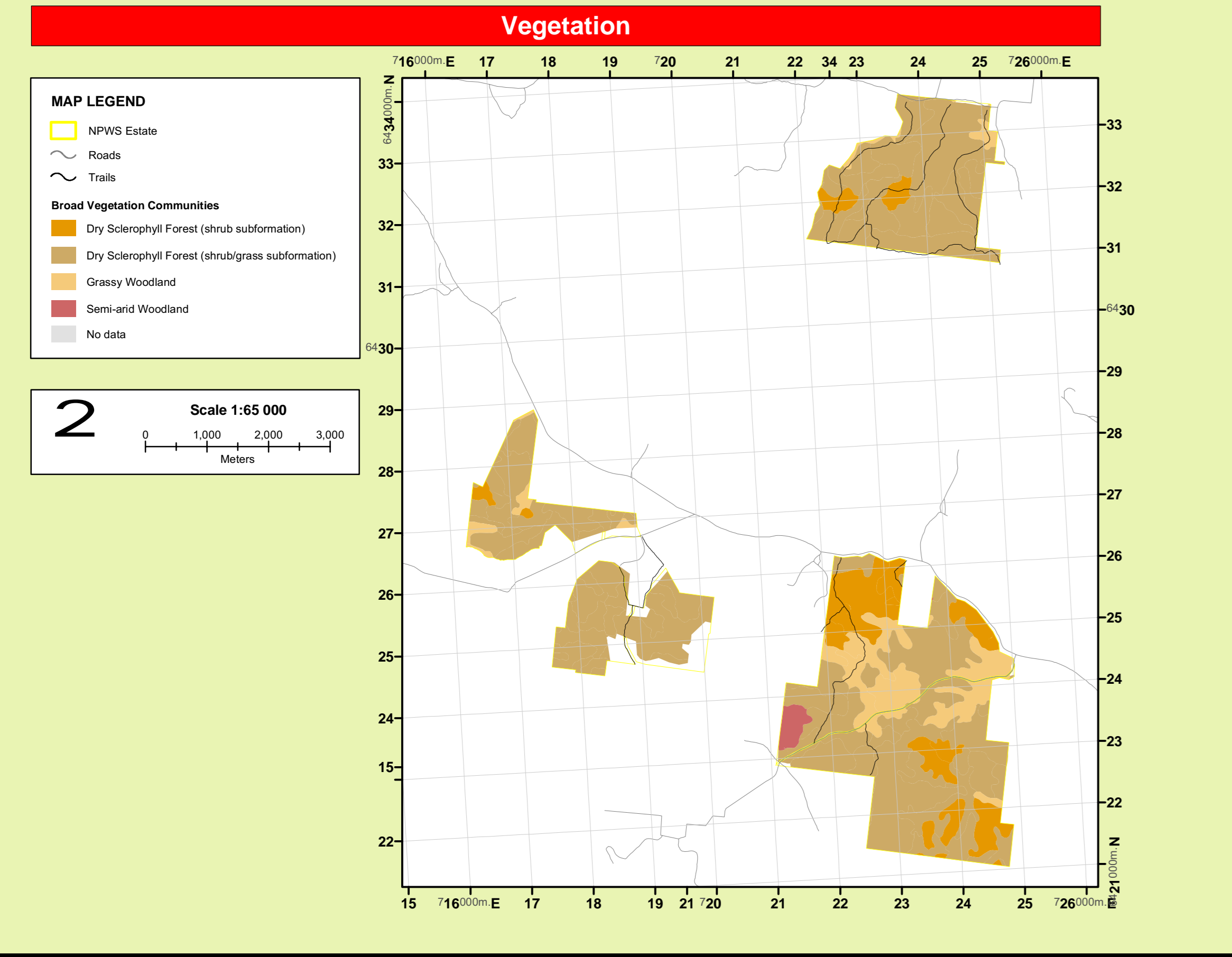
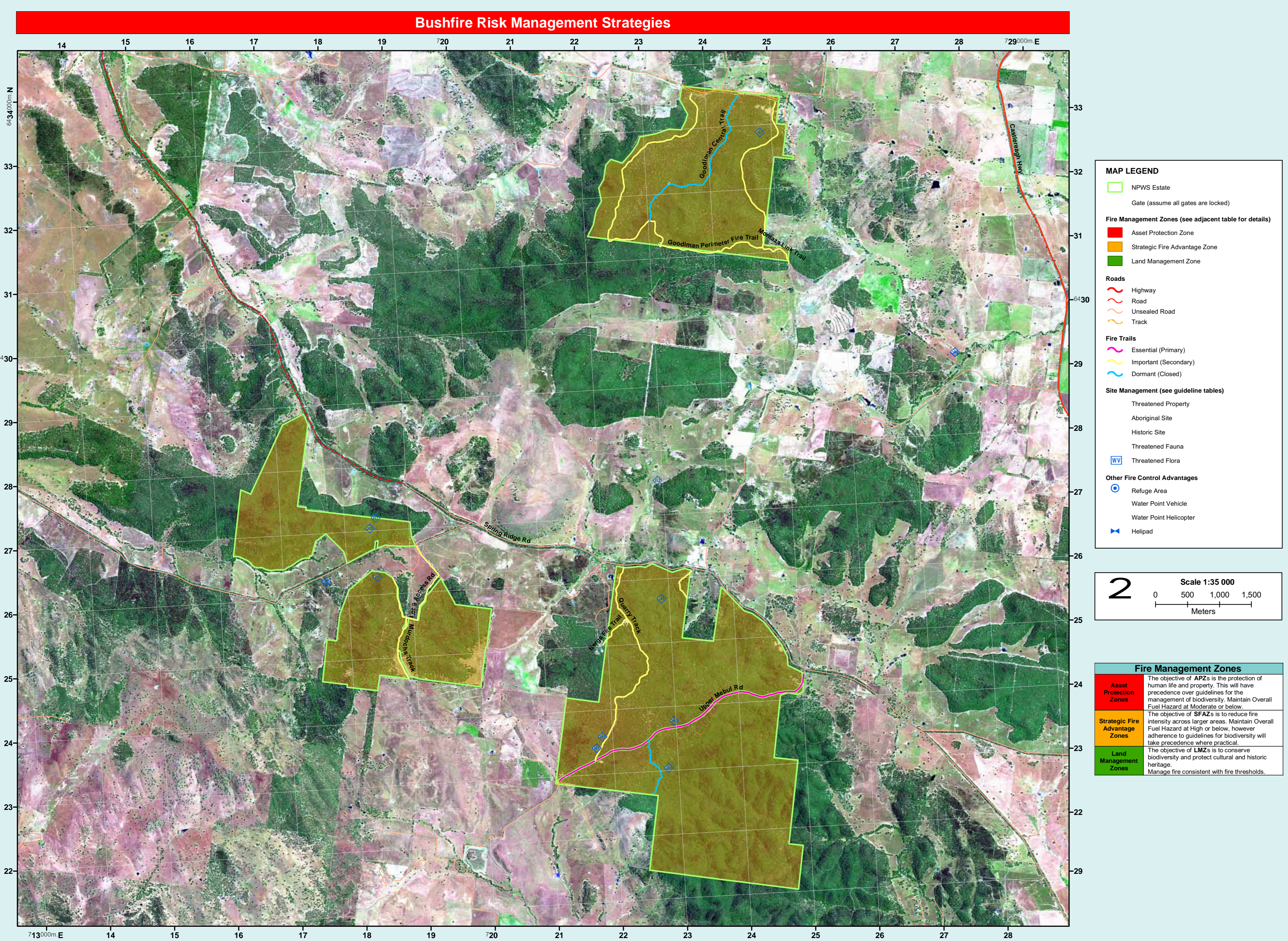
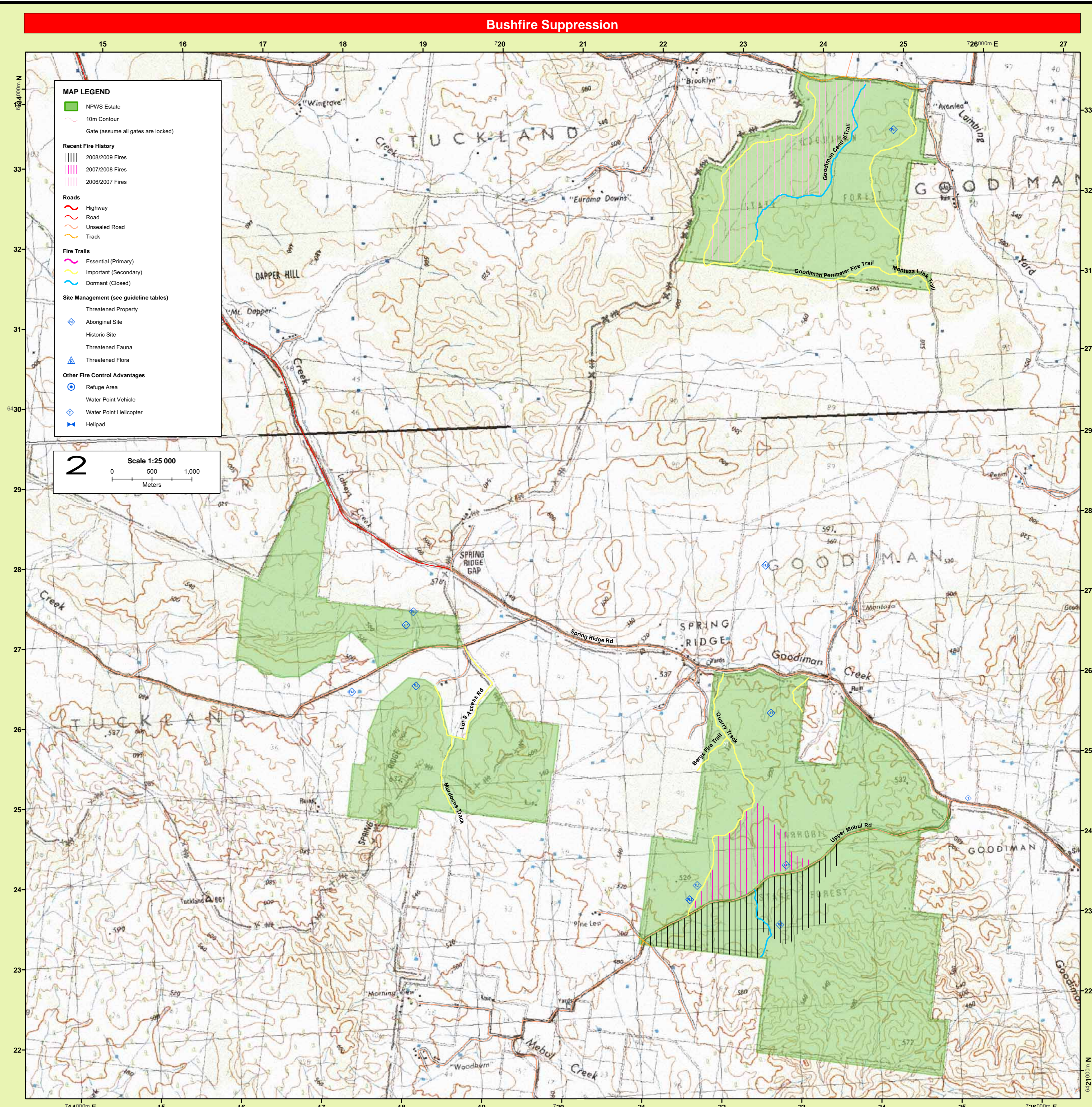
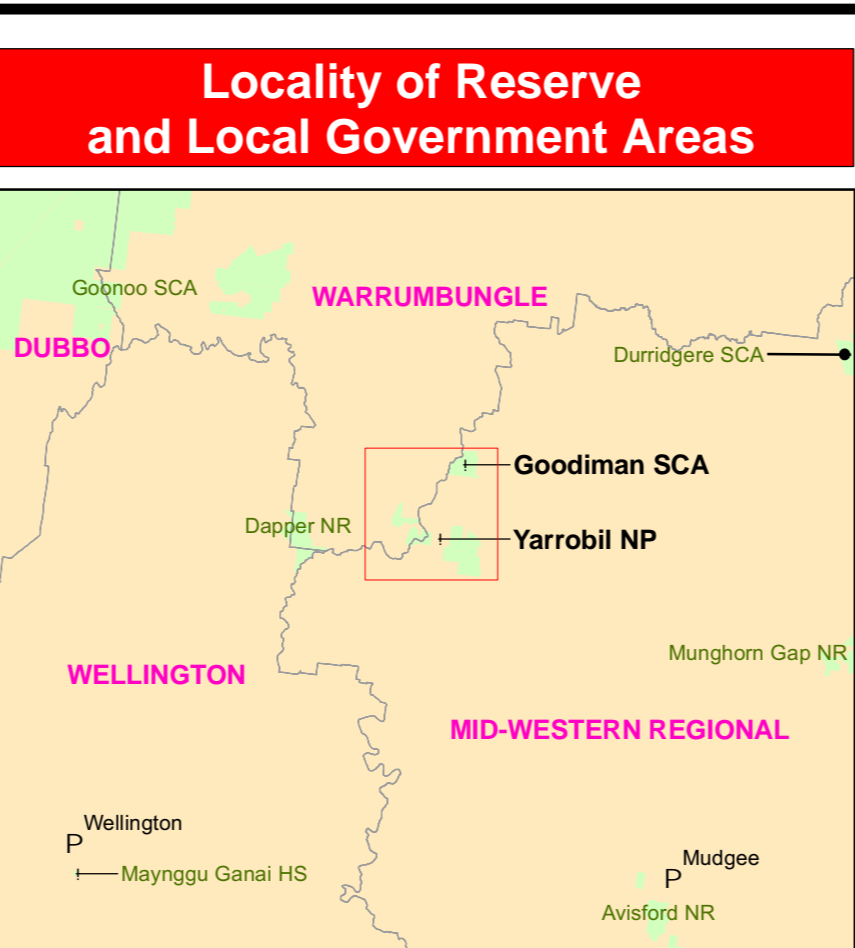
ISBN 978 1 74222 287 2 DEC 2009/375

Endorsed by: Robert Corry, Executive Director, Park Management Division

Map Details: Aerial Photography: Spot Image 2008, 1:25k Topographic Map, Geoscan 07/31/07, Durovic 07/31/07, E.Ply

Contact Information		
Agency	Position / Location	Phone
National Parks & Wildlife Service	Blue Mountains Regional Day Office (24 Hour)	016 301 1811
	Mudgee Area Manager	63 727199
	Mudgee Area Office	0428 218 019
	Regional Office - Katonka	63727000 (fax)
	Regional Office - Katonka	63727000
Cudjuping Zone NSW Rural Fire Service (Mid-Western LGA)	24 Hours Business Hours	68 42845
Castlereagh Zone NSW Rural Fire Service (Warrumbungle LGA)	24 Hours Business Hours	0427 228 143
	Subung	63741300
Police	Emergency	000
	Business Hours	63741300
Ambulance	Emergency	000
	Business Hours	63741300
Hospital	Emergency	63741300
	Business Hours	63741300
Council	Mid - Western Council	6378 2850

Communications Information		
Service	Channel	Location and Comments
NPWS - VHF	Ch. 1	The tower at Goodiman, approx 27 kms south east of the Mudgee provides for coverage across both reserves.
	Ch. 3	The tower on the Coolah Tops plateau provides poor coverage and may be limited to the higher ridges.
NPWS - VHF (Fireground Comms)	Ch. 17 - 19	Good car to car coverage
NPWS - VHF (Portable Repeaters)	Ch. 33	Coverage will depend on repeater location.
RFS - FM/R	Ch. 33	Cudjuping Zone RFS - coverage fair.
CB - UHF	Various channels in use	Not for strategic communication. Choose channel for Fireground comms in consultation with RFS, also available for air to ground comms.
Aircraft - VHF		Will be allocated by the State Air Desk
Mobile Phone - Next G		Fair coverage at high points.
Mobile Phone - GSM		Service is best available in areas that are not covered by heavy canopy or open areas such as grazing land, quarries or road intersections.
Satellite Phone		



Operational Guidelines	
Resource	Guidelines
Aboriginal Cultural Heritage Site Management	Where possible, existing fire trails and control lines will be used during prescribed burning operations and wildfire suppression. Should construction works be required, the NPWS Aboriginal Site Register will be used to identify site locations to avoid damage. Where sites could be impacted, consultation will be undertaken with the Mudgee Local Aboriginal Land Council prior to the activity. Disused and overgrown logging tracks will be utilised where possible in preference to the construction of new control lines.
Historic Heritage Management	There are no recorded Historic Heritage items within either Reserve.
Threatened Property	Where possible property owners with assets at risk from a wildfire event should be kept informed regarding the progress of the fire. The current level of protection of these assets will be determined.
Aerial Water Bombing	The use of water bombing aircraft should support containment operations by aggressively attacking hotspots and spot-overs.
Aerial Ignition	Aerial ignition may be used during back burning or fuel reduction operations where practicable, but only with the prior consent of a senior NPWS officer.
Backburning	Temperature and humidity trends must be monitored carefully to determine the optimal times to implement backburns. Generally, when the FDI is Very High or greater, backburning should commence when the humidity begins to rise in the late afternoon or early evening. With a lower FDI backburning must be safely undertaken during the day.
Command & Control	The first combatant agency on site may assume control of the fire, but then must ensure the relevant land management agency is notified promptly.
Containment Lines	Construction of new containment lines will be avoided, where practicable, except where construction can occur with minimal environmental impact. New containment lines require the prior consent of a senior NPWS officer.

General	
Equipment	Guidelines
Earthmoving Equipment	Earthmoving equipment may only be used with the prior consent of a senior NPWS officer, and then only if the probability of its success is high.
Fire Advantage Recording	All fire advantages used during wildfire suppression operations should be mapped and where relevant added to the database.
Fire Suppression Chemicals	Where practicable, containment lines should be stabilised and rehabilitated as part of the wildfire suppression operation.
Rehabilitation	All containment lines not required for other purposes will be closed and rehabilitated at the completion of the incident.
Smoke Management	The potential impacts of smoke and possible mitigation tactics must be considered when planning for wildfire suppression and prescribed burning operations.
Visitor Management	The Park may be closed to the public during periods of extreme fire danger, during wildfire suppression operations and during fire management burns. Notify media and all relevant authorities of any closures.

Threatened Fauna Fire Ecology		
Label	Name	Fire Ecology
F11	Powerful Owl and Barking Owl (Vulnerable)	As far as possible, protect large and hollow bearing trees in the forest and open woodlands where these species are known to occur.
F12	Brown Treecreeper (Vulnerable)	Avoid fire intervals of < 8-10 years and > 25-30 years.
F13	Koala (Vulnerable)	Avoid fire or more successive fires with 100% canopy access.

Suppression Strategies		
Current FDR	Forecast FDR	Fire Ecology
Low - Mod	Low - Mod	As far as possible, undertake indirect, parallel or direct attack along existing control lines.
Low - Mod	> High	Identify and survey backburn control lines.
High	> High	Understand indirect, parallel or direct attack to minimise the time taken to contain the fire.
Low - Mod	> High	Construct new control lines if necessary to minimise the time to contain the fire.
High	> High	Identify and survey backburn control lines.
All	All	Secure and deepen control lines along the most predicted downwind side of the fire.
All	All	Identify and survey backburn control lines.
All	All	Ensure there is sufficient time to secure control lines before the fire gets to them.
All	All	As far as possible, implement threatened species and cultural heritage management guidelines.