



NSW NATIONAL PARKS & WILDLIFE SERVICE

Blue Mountains National Park Proposed Amendment to Plan of Management

Accessibility improvements



© 2020 State of NSW and Department of Planning, Industry and Environment

With the exception of photographs, the State of NSW and Department of Planning, Industry and Environment are pleased to allow this material to be reproduced in whole or in part for educational and non-commercial use, provided the meaning is unchanged and its source, publisher and authorship are acknowledged. Specific permission is required for the reproduction of photographs.

The Department of Planning, Industry and Environment (DPIE) has compiled this report in good faith, exercising all due care and attention. No representation is made about the accuracy, completeness or suitability of the information in this publication for any particular purpose. DPIE shall not be liable for any damage which may occur to any person or organisation taking action or not on the basis of this publication. Readers should seek appropriate advice when applying the information to their specific needs.

All content in this publication is owned by DPIE and is protected by Crown Copyright, unless credited otherwise. It is licensed under the [Creative Commons Attribution 4.0 International \(CC BY 4.0\)](#), subject to the exemptions contained in the licence. The legal code for the licence is available at [Creative Commons](#).

DPIE asserts the right to be attributed as author of the original material in the following manner: © State of New South Wales and Department of Planning, Industry and Environment 2020.

Cover photo: Govetts Leap descent Rodriguez Pass Blue Mountains National Park. Aine Gliddon/DPIE

Published by:

Environment, Energy and Science
Department of Planning, Industry and Environment
Locked Bag 5022, Parramatta NSW 2124
Phone: +61 2 9995 5000 (switchboard)
Phone: 1300 361 967 (Environment, Energy and Science enquiries)
TTY users: phone 133 677, then ask for 1300 361 967
Speak and listen users: phone 1300 555 727, then ask for 1300 361 967
Email: info@environment.nsw.gov.au
Website: www.environment.nsw.gov.au

Report pollution and environmental incidents
Environment Line: 131 555 (NSW only) or info@environment.nsw.gov.au
See also www.environment.nsw.gov.au

ISBN 978-1-922431-10-3
EES 2020/ 0213
June 2020

Find out more about your environment at:

www.environment.nsw.gov.au

Contents

Have your say	1
What happens to your feedback?	1
Your privacy	2
Why amend the plan?	2
Planning framework	2
NSW Government Improving Access to National Parks Policy	3
Blue Mountains National Park context	3
How to read the amendment	4
Proposed amendment	6
1. Redevelopment of Govetts Leap	6
2. Provision for Green Gully visitor precinct	8
3. Visitor facilities table	12
Glossary	13
References	13

List of tables

Table 1	Additional rows for inclusion in Table 5	12
---------	--	----

List of figures

Figure 1	Map of regional overview of 3 precincts subject to the amendment to the plan of management	5
Figure 2	Map of Govetts Leap visitor precinct	7
Figure 3	Map of Green Gully visitor precinct	11

Have your say

Changes are proposed to the Blue Mountains National Park Plan of Management to allow improved visitor access to key visitor precincts and facilities. A draft visitor precinct plan for Govetts Leap is also available for public comment (see [Have your say on NSW environment and heritage](#)).

The Blue Mountains National Park Plan of Management was adopted in 2001. Section 73B of the *National Parks and Wildlife Act 1974* enables the Minister to amend a plan of management.

We want to know what you think about this proposed plan amendment. To give us feedback, please send a written submission via:



the online submission form through our [Have your say section](#)



email to npws.parkplanning@environment.nsw.gov.au



post to: Manager Planning Evaluation and Assessment, Locked Bag 5022, Parramatta NSW 2124.

Written submissions must be received by 17 August 2020.

To help us make the best use of your feedback:

- Please tell us what issue or part of the amendment you are talking about. One way you can do this is to include the section heading and/or page number from the amendment in your submission.
- Tell us how we can make the amendment better. You may want to tell us what you know about the park or how you or other people use and value it.

We are happy to hear any ideas or comments and will consider them all, but please be aware that we can't always include all information or ideas in the final plan.

What happens to your feedback?

- Step 1: At the close of the public exhibition period, we consider all submissions and prepare a submissions report. Multiple submissions received by the same author will be counted as a single submission.
- Step 2: We provide the relevant local advisory committee and the National Parks and Wildlife Advisory Council with the proposed amendment, all the submissions and the submissions report. They consider the documents, make comments on the amendment or suggest changes, and provide advice to the Minister for Energy and Environment.
- Step 3: The Minister considers the amendment, submissions and advice, makes any necessary changes and decides whether to adopt the amendment under the National Parks and Wildlife Act.

Your privacy

Your submission will be provided to two advisory bodies. Your comments on the draft plan may include personal information. The Department of Planning, Industry and Environment complies with the NSW *Privacy and Personal Information Protection Act 1998*, which regulates the collection, storage, quality, use and disclosure of personal information. For details see [our privacy page](#). Information that identifies you may be gathered when you use our website or send us an email.

If you indicate in your written submission that you object to your submission being made public, we will ask you before releasing your submission in response to any access applications under the *Government Information (Public Access) Act 2009*.

Why amend the plan?

Planning framework

Plans of management are legal documents that are prepared, in consultation with the community, as outlined in Part 5 of the National Parks and Wildlife Act. Once a plan of management is adopted by the Minister for Energy and Environment, operations in a park must be carried out in accordance with the plan.

The plan of management for Blue Mountains National Park (NPWS 2001) outlines park-specific objectives including:

- protection and promotion of the outstanding scenic values of the park including protection of views from within and outside the park
- provision of a range of high-quality visitor facilities and information to encourage awareness and appreciation of the park and maintain the regional significance of the park in providing nature-based recreation and tourism opportunities
- management of wilderness areas in conjunction with the adjoining national parks and reserves to maintain and enhance opportunities for solitude and self-reliant recreation while ensuring the maintenance of natural processes
- management of recreation and tourism within the park to ensure sustainable use, minimise impacts on the park's natural and cultural features and maintain opportunities for a diverse range of recreational experiences.

In addition to these objectives, park-specific management strategies include the assessment and improved management of the park's historic recreation and tourism facilities.

Four recreation settings are defined in the plan of management to assist in the provision of recreation and ensure conservation of the park's natural and cultural heritage and water catchment values:

- Developed areas
- Natural areas
- Wilderness areas
- Restricted areas.

Table 4 in the plan of management outlines the general principles for management of these settings in Blue Mountains National Park, including visitor density, type of recreation, public vehicle access, visitor facilities, locations, visitor regulation and access for management or other authorised purposes.

The plan of management states that site plans (referred to in this document as visitor precinct plans) for any major redevelopments will be made available for public comment before finalisation. A visitor precinct is a definable zone or area of park that can be considered as a whole and often has a consistent landscape setting, character and purpose. Visitor precinct planning is detailed planning that considers the specific site conditions, including cultural uses and visitor needs, to determine the selection and arrangement of facilities. Typically, this planning considers microclimate, natural features, recreational opportunities, Aboriginal and non-Aboriginal heritage, curtilage, cultural uses and functional requirements. Designs are finalised following environmental impact assessment.

NSW Government Improving Access to National Parks Policy

In 2019, the NSW Government announced the *Improving Access to National Parks Policy* and committed to invest in improving accessibility to national parks across New South Wales. The policy includes the Visitor Infrastructure and Facilities Program, which focusses on:

- increasing the safety and accessibility of walking tracks and trails
- enhancement of visitor facilities (e.g. picnic areas, barbecues etc.)
- increased support for families and people with restricted mobility, including upgrading access to iconic lookout points to a mobility impaired access standard.

Blue Mountains National Park context

Blue Mountains National Park, part of the Greater Blue Mountains World Heritage Area, is the most visited park in New South Wales. It had an estimated 8.4 million visits in 2018, a significant increase in visitation since 2008, when the park received 3.6 million visits.

Under the program to improve access as outlined above, a range of priority projects are being considered including:

1. Govetts Leap, Blackheath – redevelopment of the visitor precinct
2. Green Gully, Megalong Valley – improved visitor facilities
3. Narrow Neck, Katoomba – improved visitor infrastructure and parking.

These projects have been identified as some of the priority areas for enhancing the visitor experience and managing increased visitor demand while minimising impacts on the park's globally significant values.

The proposed works are in line with the plan of management's objectives, strategies and defined recreation settings. However, an amendment to the plan is required to:

- enable the proposed redevelopment of Govetts Leap
- provide for the Green Gully visitor precinct and its defined recreation setting
- add details of Narrow Neck visitor facilities to the inventory.

Figure 1 in the amendment is a regional overview map of the three precincts. Figures 2 and 3 are maps of the Govetts Leap and Green Gully visitor precinct boundaries.

In accordance with the plan of management:

- the *Govetts Leap Draft Visitor Precinct Plan* is being exhibited with this proposed amendment to the plan of management
- visitor precinct plans for any of the other nine proposed works considered to be major redevelopments will be made available for public comment as they are prepared.

How to read the amendment

The proposed amendment, if adopted, would change the Blue Mountains National Park Plan of Management and should be read in conjunction with the adopted plan.

Plans of management are available at: [Plans of management on the Department's website.](#)

Page number references in this document correspond to page numbers as they appear on the pages of the online PDF version of the adopted plan.

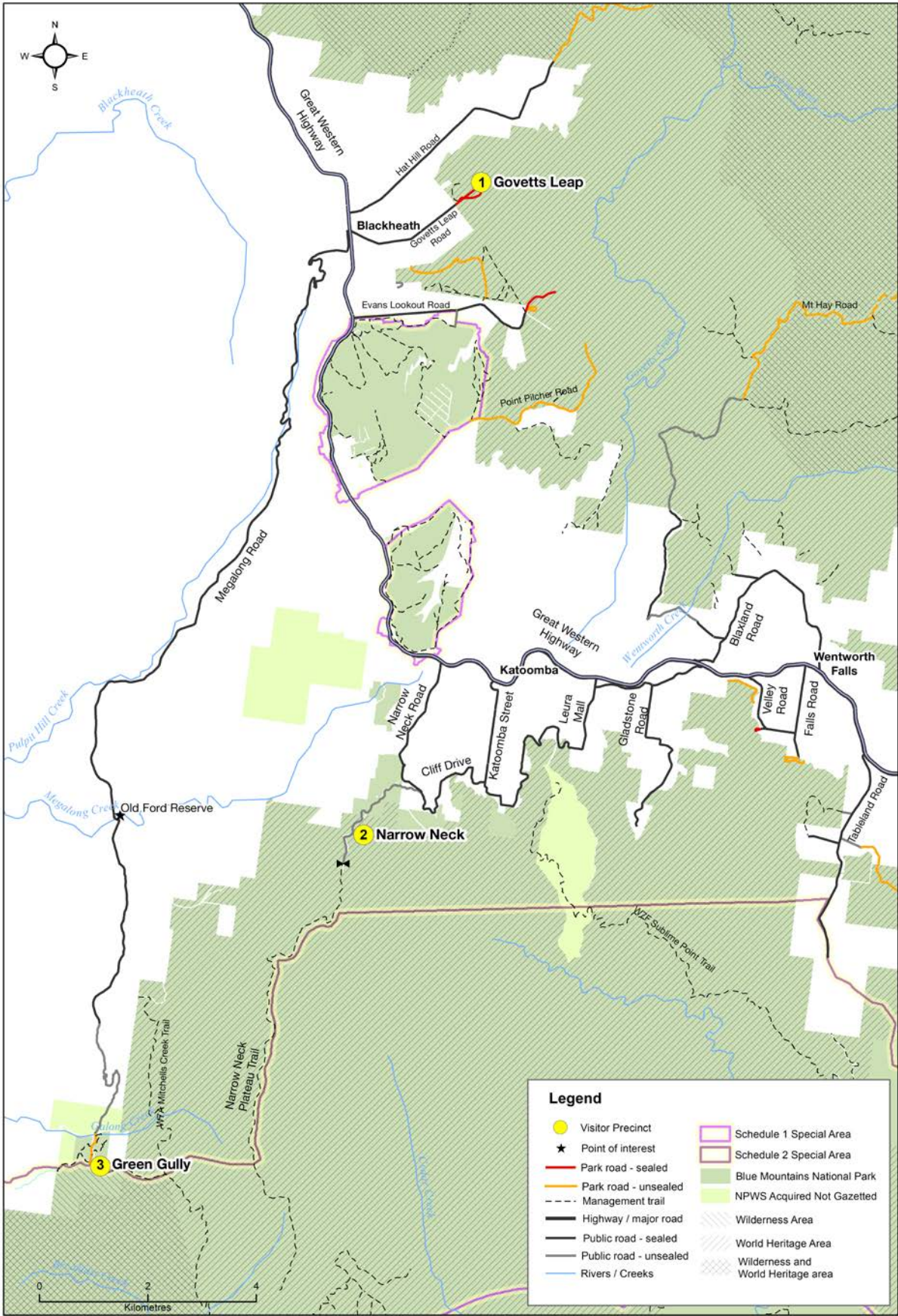


Figure 1 Map of regional overview of three precincts subject to the amendment to the plan of management

Proposed amendment

The following changes are proposed to the Blue Mountains National Park Plan of Management (NPWS 2001).

1. Redevelopment of Govetts Leap

Govetts Leap is a key visitor destination in the World Heritage-listed Blue Mountains National Park that overlooks Govetts Gorge, the upper Grose Valley and Grose Wilderness. The Grose Valley (the Blue Gum Forest in particular) is historically important for its association with the development of the early conservation movement in Australia. During the 1800s the escarpment scenery of the Grose Valley was given formal recognition and protection through the creation of Crown land reserves for public recreation known as 'Blue Mountains National Sites Reserves'. This iconic escarpment scenery has been captured by painters and photographers since that time. The park was reserved in 1959 and the Grose Wilderness was declared in 2001.

The lookout includes both unsealed and sealed parking areas on the edge of the escarpment. Vehicles using the car parks include coaches, minibuses, standard vehicles, motorcycles and bicycles. In peak periods, this mix of congested vehicles in unmarked parking areas compromises pedestrian safety. The precinct will be re-designed to improve visitor enjoyment and safety in the context of a key World Heritage Area destination. This will include better access for people with a disability or restricted mobility and other pedestrians.

Proposed changes

1a. Table 6: Plan Implementation

Plan reference: page 97, under 4.3.4 Day Use and Camping, Jamison Valley escarpment

Replace the action:

- Govetts Leap – investigate options for redevelopment

With:

- Govetts Leap – redevelop in accordance with the finalised visitor precinct plan

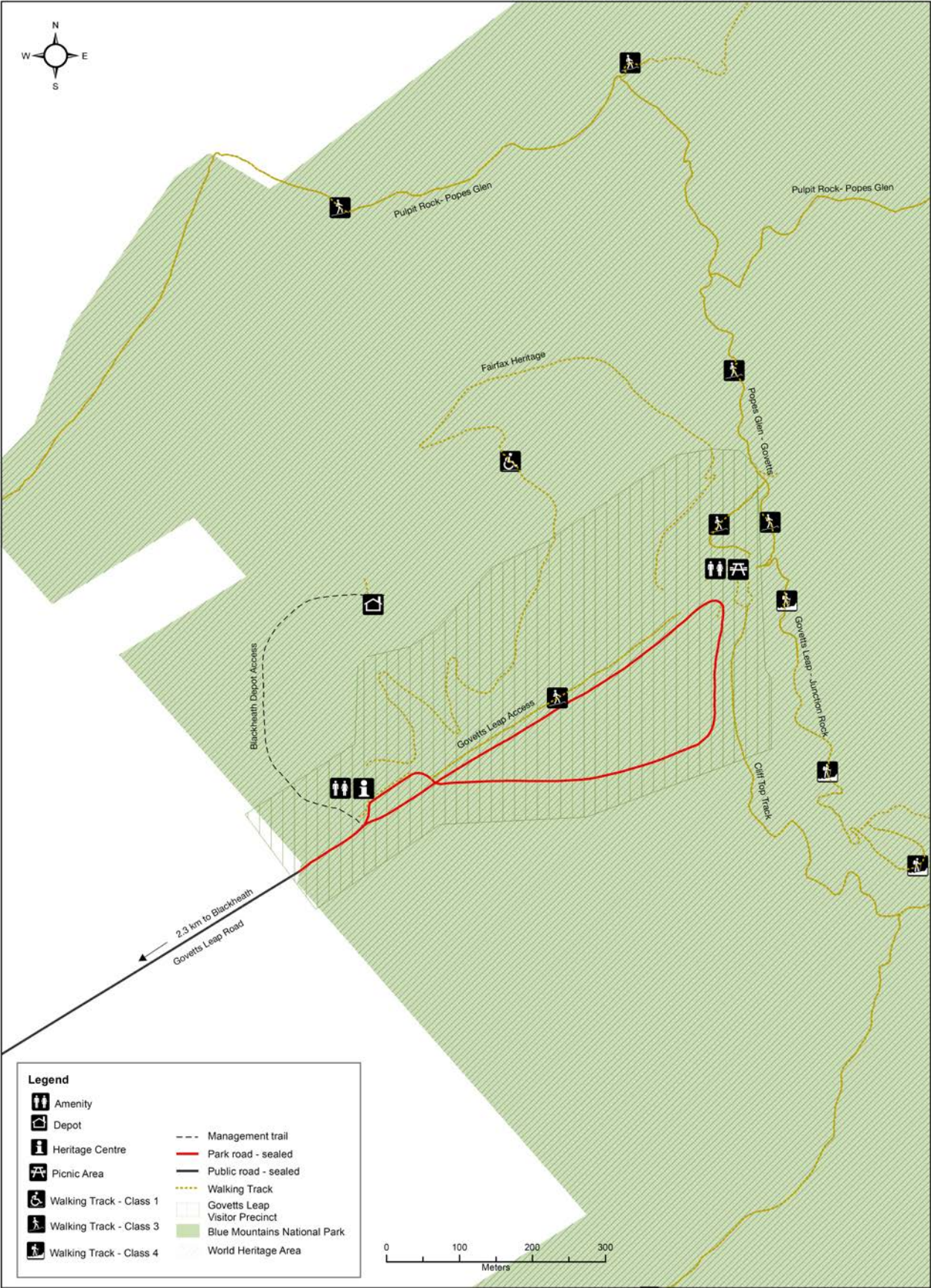


Figure 2 Map of Govetts Leap visitor precinct

2 Provision for Green Gully visitor precinct

NPWS purchased the initial parcels of land in Green Gully in 1998 to provide public access to the Coxs River area and protect wilderness values. It was reserved as part of Blue Mountains National Park in February 2003, after the plan of management's adoption. NPWS has acquired additional parcels of land in this area that have not been reserved as part of the park yet.

The Carlon family was associated with Green Gully for over 150 years. For many years the family operated a horse riding business at the property, enabling visitors to experience the bush on horseback and stay overnight. The land also has a long history of association with bushwalkers and prominent conservation advocates.

Green Gully is a key access point for bushwalking in the Coxs River area, including the Wild Dog Mountains. The site is accessible by vehicle, 20 kilometres from Blackheath and yet retains a sense of remoteness, being located at the end of the Megalong Valley and next to the Kanangra-Boyd Wilderness (designated as a Wilderness recreation setting by the plan of management). Its accessibility, popularity and presence of previously-disturbed land provide the basis for the continuation of appropriate visitor facilities, such as vehicle-based camping and accommodation in the existing cabins.

The continuation of the use of the cabins for visitor accommodation and their renovation is provided for under the National Parks and Wildlife Act. Adaptive reuse is defined under section 5 of the Act as the modification of the building or structure on land and its curtilage to suit an existing (or proposed) use, and the use of the building or structure, but only if:

- the modification and use is carried out in a sustainable manner
- the modification and use are not inconsistent with the conservation of the natural and cultural values of the land
- in the case of a building or structure of cultural significance, the modification is compatible with the retention of the cultural significance of the building.

The continued visitor use and renovation of the existing cabins at Green Gully meets the definition and criteria for adaptive reuse. There are no proposed new uses of the buildings.

Proposed changes

2a. Section 4.3.2 Recreation Opportunities

Plan reference: page 55, second paragraph, last sentence

Replace the following text:

Facilities for tourism in the park are focussed on the park's natural environment, e.g. scenic lookouts and associated walking tracks, complementing the more developed tourism opportunities and facilities in the adjoining Blue Mountains City area. Resorts, caravan parks and other forms of built accommodation are available in Blue Mountains City and are therefore not appropriate in the park.

With:

Facilities for tourism in the park are focussed on the park's natural environment, e.g. scenic lookouts and associated walking tracks, complementing the more developed tourism opportunities and facilities on other lands in the Blue Mountains Local Government Area. Resorts, caravan parks and other forms of built accommodation are available elsewhere in Blue Mountains City and are therefore not appropriate in the park. The only

form of built visitor accommodation in the park is the adaptive reuse (as defined by the National Parks and Wildlife Act) of existing buildings appropriate to their recreation setting and which are not required for other park management purposes.

2b. Section 4.3.3 Vehicle access

Plan reference: page 62, under Policies, third paragraph

Add the following road to the list of roads that will be maintained for public access within the Natural setting:

- Green Gully Cabins Road

2c. 4.3.4 Day Use and Camping

Plan reference: page 65, third paragraph

Replace:

Vehicle-based day/camping areas in the Natural setting are currently provided at Burrell Creek in the lower Blue Mountains, Ingar and Murphys Glen in the mid-mountains, Perrys Lookdown in the upper Blue Mountains and Bats Camp in the southern Blue Mountains.

With:

Vehicle-based day/camping areas in the Natural setting are currently provided at Burrell Creek in the lower Blue Mountains, Ingar and Murphys Glen in the mid-mountains, Perrys Lookdown and Green Gully in the upper Blue Mountains and Bats Camp in the southern Blue Mountains.

2d. 4.3.4 Day Use and Camping

Plan reference: page 66, third dot point

Replace:

- More sophisticated, high impact accommodation facilities such as lodges, cabins and caravan parks will not be permitted in the park

With:

- More sophisticated, high impact accommodation facilities such as lodges, cabins and caravan parks will not be permitted in the park. The existing buildings at Green Gully may continue to be used for visitor accommodation where their adaptive reuse meets the definition under the National Parks and Wildlife Act, is appropriate to their recreation setting and they are not required for other park management purposes.

2e. 4.3.4 Day Use and Camping

Plan reference: page 71, immediately before Grose Valley (southern side and valley floor)

Add the following text:

Megalong Valley

Green Gully: The Green Gully precinct will be developed and maintained to provide day use and overnight stay opportunities consistent with the Natural setting and capitalising on pre-existing modified areas and buildings. The precinct, which was previously known

as Carlons Farm, offers a camping and cabin-stay experience below the Narrow Neck escarpment and provides walk-in access to the adjacent declared Kanangra-Boyd Wilderness. The precinct boundaries are shown on the map (Figure 3 in the amendment).

2f. Table 6: Plan Implementation

Plan reference: page 97, under 4.3.4 Day Use and Camping, directly below Jamison Valley escarpment section

Add a new Day Use and Camping area:

Megalong Valley

- Green Gully – provide for both walk-in and vehicle-based camping facilities within existing disturbed areas [Medium priority]

2g. Table 6: Plan Implementation

Plan reference: page 98, following 4.3.4 Day Use and Camping and before 4.3.5 Walking Tracks and Bushwalking

Add a new subsection and re-number others as appropriate:

4.3.5 Accommodation

- Green Gully cabins – continue to provide visitor accommodation in existing buildings appropriate to their Natural setting and the adjacent Wilderness setting. Consider the needs of park visitors in their adaptive reuse. [High priority]

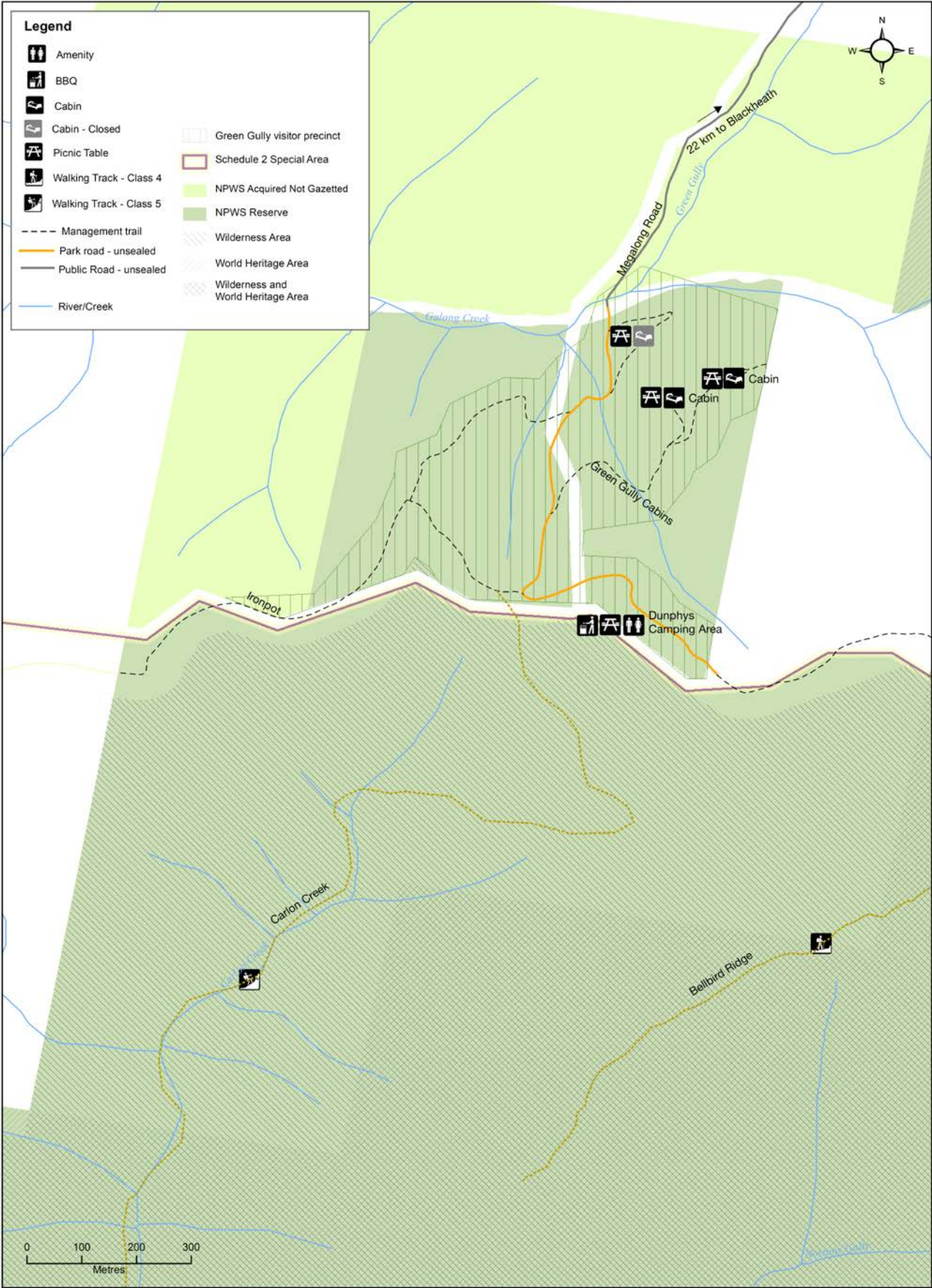


Figure 3 Map of Green Gully visitor precinct

3 Visitor facilities table

Narrow Neck is a 10 kilometre long peninsula that separates the Jamison Valley from the Megalong Valley and Wild Dog Mountains. It is an important access point for bushwalks in the park, including the remote three-day hike between Katoomba and Kanangra. The peninsula contains approved abseiling and climbing sites and offers bird watching, mountain biking and trail running opportunities. Currently, visitors can drive around 2.5 kilometres from the start of Glenraphael Drive (a public road) to a locked gate marking the start of the management trail. This road section is comprised of public road and park road tenures (see Glossary).

The popularity of this precinct has grown simultaneously with the significant overall increase in visitation to the Blue Mountains National Park and the growth of sports such as trail running, mountain bike riding and rock climbing. Parking congestion occurs along the length of the road during peak periods, compromising emergency access, pedestrian safety and vegetation protection. There is also continued damage occurring along the road section, resulting in high maintenance requirements. A visitor precinct plan will be prepared for public comment.

The visitor facilities table in the plan of management requires incorporation of the Narrow Neck and Green Gully precincts and facilities. The background for adding the Green Gully precinct to the table is addressed in section 2 of this amendment.

Proposed changes

3a. Table 5 Visitor facilities in Blue Mountains National Park

Plan reference: page 67

Add the following rows to Table 5 between the Jamison Valley escarpment and Grose Valley (southern side) visitor precincts

Table 1 Additional rows for inclusion in Table 5

Table 5 Visitor Facilities in Blue Mountains National Park (excludes facilities managed by Blue Mountains City Council)									
Precinct	Locality	Developed setting				Natural setting			
		L.O.	Picnic	Camp	Track-head	L.O.	Picnic	Camp	Track-head
Jamison Valley escarpment	Narrow Neck					●V	●V		●V
Megalong Valley	Green Gully					●V, W	●V	●V, W +cabins	●V

Key: V – Vehicle access; W – Walk-in access.

Glossary

Accessibility: In this document, 'accessibility' refers to improving physical and practical access for families and people with restricted mobility. In the NSW Government's *Improving Access to National Parks Policy*, this term has a broader definition.

Capital works: Building and engineering works that create an asset, and/or constructing or installing facilities and fixtures associated with and forming an integral part of those works.

Greater Blue Mountains World Heritage Area: comprised of eight parks and reserves, the World Heritage Property is listed by UNESCO for its outstanding universal values. For more information see: <https://whc.unesco.org/en/list/917/>

Management trail: A vehicle trail on lands reserved or acquired under the *National Park and Wildlife Act 1974*, which is maintained by NPWS for the purpose of park management activities. If such trails are open to public vehicle use, then they are 'roads' under the roads legislation. See 'park road'.

Park road: A road reserved as part of a park that is open to the public, though it can be closed for park management reasons. Parks roads are maintained by NPWS.

Public road: A road that is not part of a park and is designated as a public road under the *Roads Act 1993* or other legislation for the purposes of the Roads Act such as the *Crown Land Management Act 2016*.

Visitor precinct: a definable zone or area of park that can be considered as a whole and often has a consistent landscape setting, character and purpose. Visitor precinct planning is detailed planning that considers the specific site conditions, including cultural uses and visitor needs, to determine the selection and arrangement of facilities. Typically, this planning considers microclimate, natural features, recreational opportunities, Aboriginal and non-Aboriginal heritage, curtilage, cultural uses and functional requirements.

References

NPWS 2001, *Blue Mountains National Park Plan of Management*, NSW National Parks and Wildlife Service, accessed 29 October 2019, www.environment.nsw.gov.au/-/media/OEH/Corporate-Site/Documents/Parks-reserves-and-protected-areas/Parks-plans-of-management/blue-mountains-national-park-plan-of-management-010129.pdf