

LAND AND PROPERTY INFORMATION NEW SOUTH WALES - TITLE SEARCH

FOLIO: AUTO CONSOL 11564-20

SEARCH DATE	TIME	EDITION NO	DATE
-----	----	-----	----
8/8/2017	9:36 AM	4	9/4/2016

LAND

LAND DESCRIBED IN SCHEDULE OF PARCELS
LOCAL GOVERNMENT AREA BYRON
PARISH OF BYRON COUNTY OF ROUS
TITLE DIAGRAM DP1623

FIRST SCHEDULE

MASTER ALCHEMY PTY LTD (T AK346385)

SECOND SCHEDULE (8 NOTIFICATIONS)

- 1 LAND EXCLUDES MINERALS AND IS SUBJECT TO RESERVATIONS AND CONDITIONS IN FAVOUR OF THE CROWN - SEE CROWN GRANT(S)
- 2 D379110 D432499, D470483, D508059, D931181 & M9797 RIGHT OF WAY AFFECTING THE PART OF LOTS 35 AND 36 SHOWN SO BURDENED IN PLAN WITH D379110
- 3 D379110 D432499 RIGHT OF WAY APPURTENANT TO THE LAND WITHIN DESCRIBED AFFECTING THE PARTS OF LOTS 13 & 14 SECTION 3 DP1623 (D379110) & LOTS 11 & 12 SECTION 3 DP1623 (D432499) SHOWN SO BURDENED IN PLAN WITH D379110
- 4 D470483 , D508059 RIGHT OF WAY APPURTENANT TO THE LAND WITHIN DESCRIBED AFFECTING THE PARTS OF LOT 15 TO 19 SECTION 3 DP1623 (D470483) & LOTS 20 TO 24 SECTION 3 DP1623 (D508059) SHOWN SO BURDENED IN PLAN WITH D379110
- 5 D931181 RIGHT OF WAY APPURTENANT TO THE LAND ABOVE DESCRIBED AFFECTING THE PARTS OF LOTS 1, 2, 25 TO 31 INC & LOTS 37 TO 69 INCL SECTION 3 DP1623 SHOWN SO BURDENED IN PLAN WITH D379110
- 6 M9797 RIGHT OF WAY APPURTENANT TO THE LAND ABOVE DESCRIBED AFFECTING THE PARTS OF LOTS 32, 33 & 34 SECTION 3 DP1623 SHOWN SO BURDENED IN PLAN WITH D379110
- 7 8455016 RIGHT OF CARRIAGEWAY VARIABLE WIDTH APPURTENANT TO THE LAND ABOVE DESCRIBED AFFECTING THE PART OF LOT 2 SEC. 3 IN DP1623 AS SHOWN IN DP1039659
- 8 AK346386 MORTGAGE TO COMMONWEALTH BANK OF AUSTRALIA

NOTATIONS

UNREGISTERED DEALINGS: NIL

END OF PAGE 1 - CONTINUED OVER

FOLIO: AUTO CONSOL 11564-20

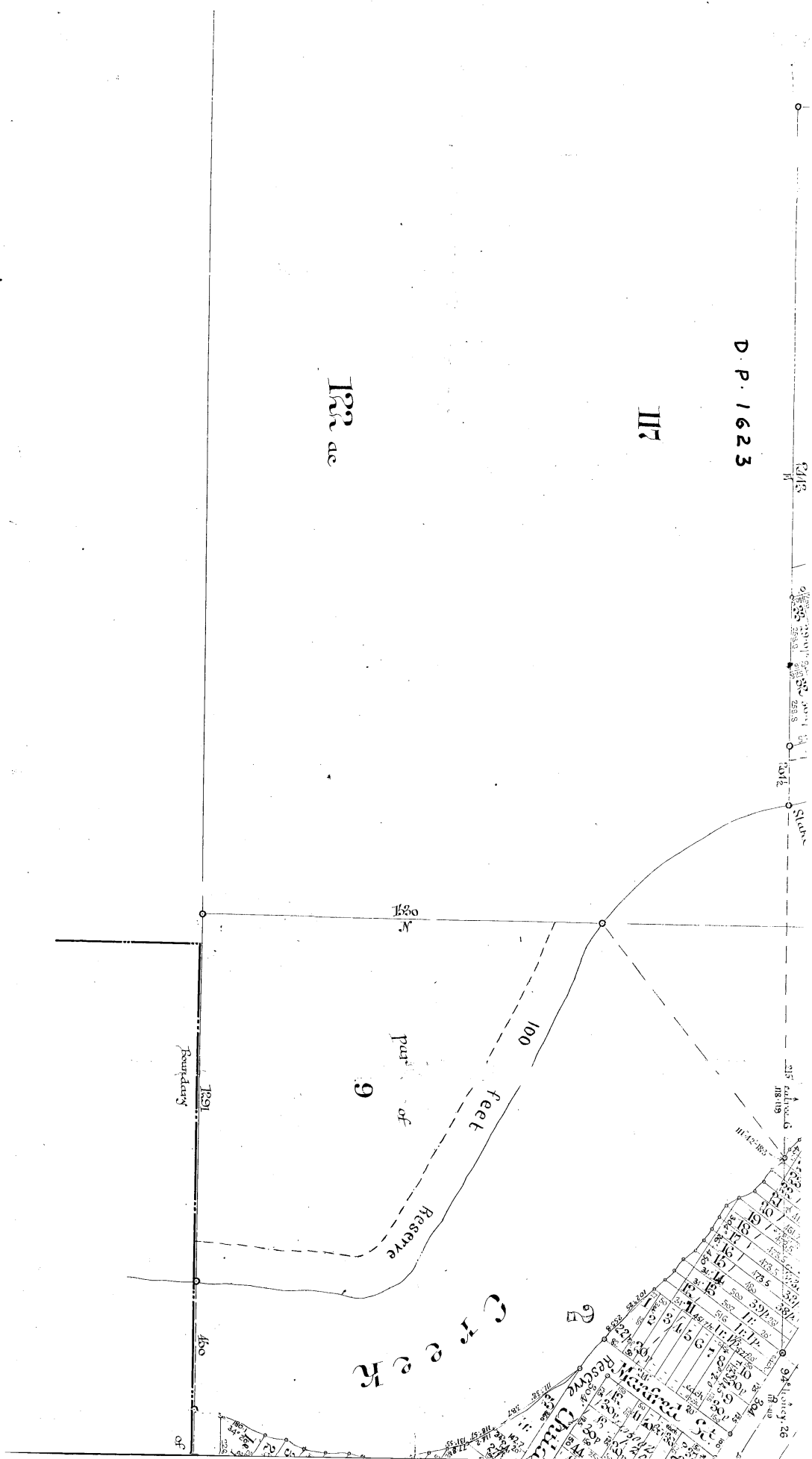
PAGE 2

SCHEDULE OF PARCELS

LOTS 35-36 SEC. 3 IN DP1623.

*** END OF SEARCH ***

to be used
4/16/86
5/15/86
Scale 3 chains to an inch
DP 1623 (E)



DP 1623 (E)

*This is the plan marked "A" referred to in the survey
Declaration made by David's Title before me this
16th Day of December 1885.*

David's Title

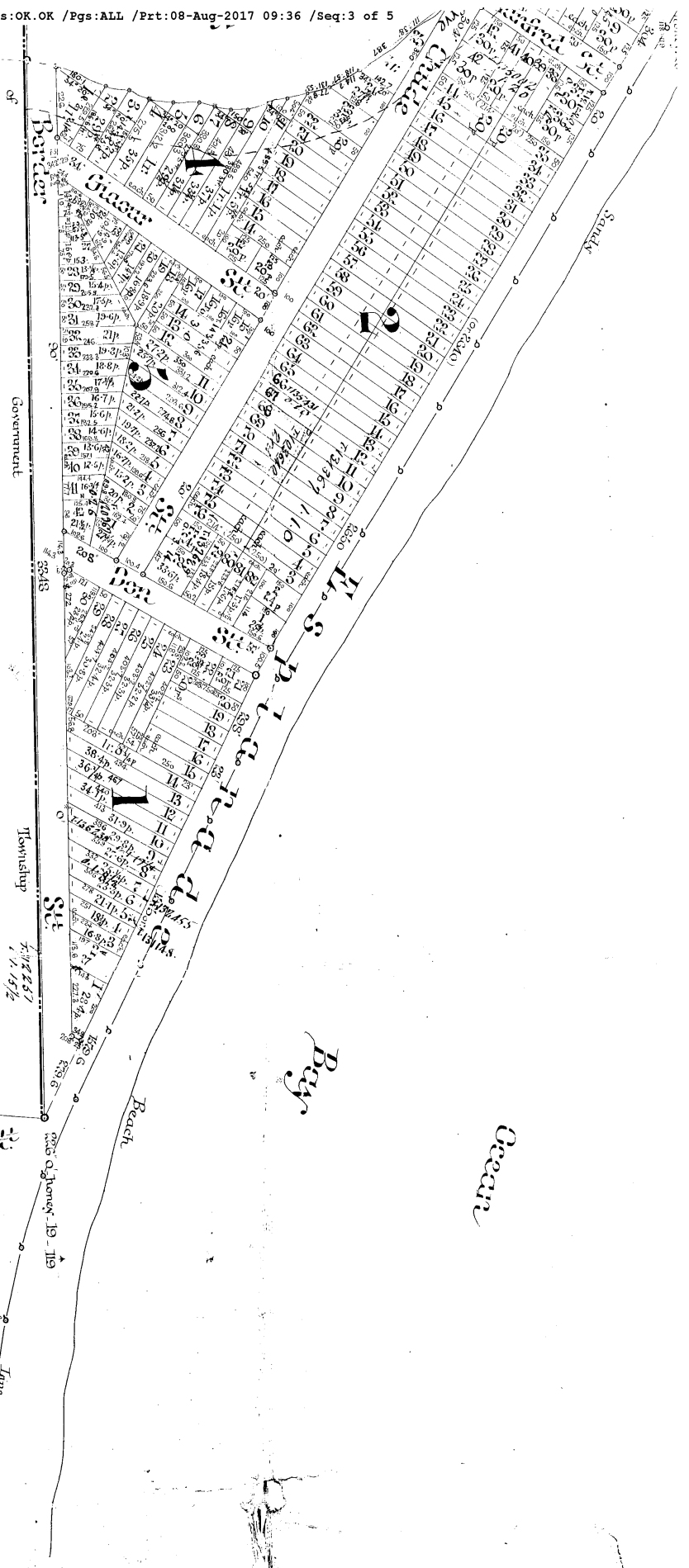
Licensed Surveyor

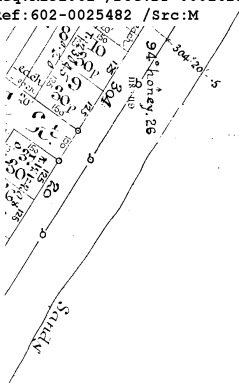
David's Title

DP 1623

(E)

DP 1623





Draft

"A" PLAN

of Subdivision of part of portions **118** and **119**.

Parish of **Bayou**
County of **Rous**

The Property of **Mathias J. Simmons**.

1 50 ac per US Grant to Mathias Julian Simmons 30th Dec 1885 (17236184)
2 50 ac " 119 " Mathias Julian Simmons 30th Dec 1885, 762, 765, 185

1623

DP 1623
DP 1623 (E)

COPY MADE
BY
MAY 15 1984
4-2-84

CONVERSION TABLE ADDED IN DEPARTMENT OF LANDS
 DP 1623 CONTINUED

FEET INCHES	METRES
100	30.480
LINKS	METRES
17	3.429
20	4.023
20.0	4.004
20.2	4.004
20.4	4.104
20.6	4.104
20.8	4.104
21.0	4.104
21.2	4.104
21.4	4.104
21.6	4.104
21.8	4.104
22.0	4.104
22.2	4.104
22.4	4.104
22.6	4.104
22.8	4.104
23.0	4.104
23.2	4.104
23.4	4.104
23.6	4.104
23.8	4.104
24.0	4.104

CONVERSION TABLE ADDED IN DEPARTMENT OF LANDS
 DP 1623 CONTINUED

LINKS	METRES
124.5	23.045
125	23.146
125.2	23.146
125.4	23.146
125.6	23.146
125.8	23.146
126.0	23.146
126.2	23.146
126.4	23.146
126.6	23.146
126.8	23.146
127.0	23.146
127.2	23.146
127.4	23.146
127.6	23.146
127.8	23.146
128.0	23.146
128.2	23.146
128.4	23.146
128.6	23.146
128.8	23.146
129.0	23.146
129.2	23.146
129.4	23.146
129.6	23.146
129.8	23.146
130.0	23.146
130.2	23.146
130.4	23.146
130.6	23.146
130.8	23.146
131.0	23.146
131.2	23.146
131.4	23.146
131.6	23.146
131.8	23.146
132.0	23.146
132.2	23.146
132.4	23.146
132.6	23.146
132.8	23.146
133.0	23.146
133.2	23.146
133.4	23.146
133.6	23.146
133.8	23.146
134.0	23.146
134.2	23.146
134.4	23.146
134.6	23.146
134.8	23.146
135.0	23.146
135.2	23.146
135.4	23.146
135.6	23.146
135.8	23.146
136.0	23.146
136.2	23.146
136.4	23.146
136.6	23.146
136.8	23.146
137.0	23.146
137.2	23.146
137.4	23.146
137.6	23.146
137.8	23.146
138.0	23.146
138.2	23.146
138.4	23.146
138.6	23.146
138.8	23.146
139.0	23.146
139.2	23.146
139.4	23.146
139.6	23.146
139.8	23.146
140.0	23.146
140.2	23.146
140.4	23.146
140.6	23.146
140.8	23.146
141.0	23.146
141.2	23.146
141.4	23.146
141.6	23.146
141.8	23.146
142.0	23.146
142.2	23.146
142.4	23.146
142.6	23.146
142.8	23.146
143.0	23.146
143.2	23.146
143.4	23.146
143.6	23.146
143.8	23.146
144.0	23.146
144.2	23.146
144.4	23.146
144.6	23.146
144.8	23.146
145.0	23.146
145.2	23.146
145.4	23.146
145.6	23.146
145.8	23.146
146.0	23.146
146.2	23.146
146.4	23.146
146.6	23.146
146.8	23.146
147.0	23.146
147.2	23.146
147.4	23.146
147.6	23.146
147.8	23.146
148.0	23.146
148.2	23.146
148.4	23.146
148.6	23.146
148.8	23.146
149.0	23.146
149.2	23.146
149.4	23.146
149.6	23.146
149.8	23.146
150.0	23.146
150.2	23.146
150.4	23.146
150.6	23.146
150.8	23.146
151.0	23.146
151.2	23.146
151.4	23.146
151.6	23.146
151.8	23.146
152.0	23.146
152.2	23.146
152.4	23.146
152.6	23.146
152.8	23.146
153.0	23.146
153.2	23.146
153.4	23.146
153.6	23.146
153.8	23.146
154.0	23.146
154.2	23.146
154.4	23.146
154.6	23.146
154.8	23.146
155.0	23.146
155.2	23.146
155.4	23.146
155.6	23.146
155.8	23.146
156.0	23.146
156.2	23.146
156.4	23.146
156.6	23.146
156.8	23.146
157.0	23.146
157.2	23.146
157.4	23.146
157.6	23.146
157.8	23.146
158.0	23.146
158.2	23.146
158.4	23.146
158.6	23.146
158.8	23.146
159.0	23.146
159.2	23.146
159.4	23.146
159.6	23.146
159.8	23.146
160.0	23.146
160.2	23.146
160.4	23.146
160.6	23.146
160.8	23.146
161.0	23.146
161.2	23.146
161.4	23.146
161.6	23.146
161.8	23.146
162.0	23.146
162.2	23.146
162.4	23.146
162.6	23.146
162.8	23.146
163.0	23.146
163.2	23.146
163.4	23.146
163.6	23.146
163.8	23.146
164.0	23.146
164.2	23.146
164.4	23.146
164.6	23.146
164.8	23.146
165.0	23.146
165.2	23.146
165.4	23.146
165.6	23.146
165.8	23.146
166.0	23.146
166.2	23.146
166.4	23.146
166.6	23.146
166.8	23.146
167.0	23.146
167.2	23.146
167.4	23.146
167.6	23.146
167.8	23.146
168.0	23.146
168.2	23.146
168.4	23.146
168.6	23.146
168.8	23.146
169.0	23.146
169.2	23.146
169.4	23.146
169.6	23.146
169.8	23.146
170.0	23.146
170.2	23.146
170.4	23.146
170.6	23.146
170.8	23.146
171.0	23.146
171.2	23.146
171.4	23.146
171.6	23.146
171.8	23.146
172.0	23.146
172.2	23.146
172.4	23.146
172.6	23.146
172.8	23.146
173.0	23.146
173.2	23.146
173.4	23.146
173.6	23.146
173.8	23.146
174.0	23.146
174.2	23.146
174.4	23.146
174.6	23.146
174.8	23.146
175.0	23.146
175.2	23.146
175.4	23.146
175.6	23.146
175.8	23.146
176.0	23.146
176.2	23.146
176.4	23.146
176.6	23.146
176.8	23.146
177.0	23.146
177.2	23.146
177.4	23.146
177.6	23.146
177.8	23.146
178.0	23.146
178.2	23.146
178.4	23.146
178.6	23.146
178.8	23.146
179.0	23.146
179.2	23.146
179.4	23.146
179.6	23.146
179.8	23.146
180.0	23.146
180.2	23.146
180.4	23.146
180.6	23.146
180.8	23.146
181.0	23.146
181.2	23.146
181.4	23.146
181.6	23.146
181.8	23.146
182.0	23.146
182.2	23.146
182.4	23.146
182.6	23.146
182.8	23.146
183.0	23.146
183.2	23.146
183.4	23.146
183.6	23.146
183.8	23.146
184.0	23.146
184.2	23.146
184.4	23.146
184.6	23.146
184.8	23.146
185.0	23.146
185.2	23.146
185.4	23.146
185.6	23.146
185.8	23.146
186.0	23.146
186.2	23.146
186.4	23.146
186.6	23.146
186.8	23.146
187.0	23.146
187.2	23.146
187.4	23.146
187.6	23.146
187.8	23.146
188.0	23.146
188.2	23.146
188.4	23.146
188.6	23.146
188.8	23.146
189.0	23.146
189.2	23.146
189.4	23.146
189.6	23.146
189.8	23.146
190.0	23.146
190.2	23.146
190.4	23.146
190.6	23.146
190.8	23.146
191.0	23.146
191.2	23.146
191.4	23.146
191.6	23.146
191.8	23.146
192.0	23.146
192.2	23.146
192.4	23.146
192.6	23.146
192.8	23.146
193.0	23.146
193.2	23.146
193.4	23.146
193.6	23.146
193.8	23.146
194.0	23.146
194.2	23.146
194.4	23.146
194.6	23.146
194.8	23.146
195.0	23.146
195.2	23.146
195.4	23.146
195.6	23.146
195.8	23.146
196.0	23.146
196.2	23.146
196.4	23.146
196.6	23.146
196.8	23.146
197.0	23.146
197.2	23.146
197.4	23.146
197.6	23.146
197.8	23.146
198.0	23.146
198.2	23.146
198.4	23.146
198.6	23.146
198.8	23.146
199.0	23.146
199.2	23.146
199.4	23.146
199.6	23.146
199.8	23.146
200.0	23.146

CONVERSION TABLE ADDED IN DEPARTMENT OF LANDS
 DP 1623 CONTINUED

LINKS	METRES
231.1	50.916
231.2	50.916
231.3	50.916
231.4	50.916
231.5	50.916
231.6	50.916
231.7	50.916
231.8	50.916
231.9	50.916
232.0	50.916
232.1	50.916
232.2	50.916
232.3	50.916
232.4	50.916
232.5	50.916
232.6	50.916
232.7	50.916
232.8	50.916
232.9	50.916
233.0	50.916
233.1	50.916
233.2	50.916
233.3	50.916
233.4	50.916
233.5	50.916
233.6	50.916
233.7	50.916
233.8	50.916
233.9	50.916
234.0	50.916
234.1	50.916
234.2	50.916
234.3	50.916
234.4	50.916
234.5	50.916
234.6	50.916
234.7	50.916
234.8	50.916
234.9	50.916
235.0	50.916
235.1	50.916
235.2	50.916
235.3	50.916
235.4	50.916
235.5	50.916
235.6	50.916
235.7	50.916
235.8	50.916
235.9	50.916
236.0	50.916
236.1	50.916
236.2	50.916
236.3	50.916
236.4	50.916
236.5	50.916
236.6	50.916
236.7	50.916
236.8	50.916
236.9	50.916
237.0	