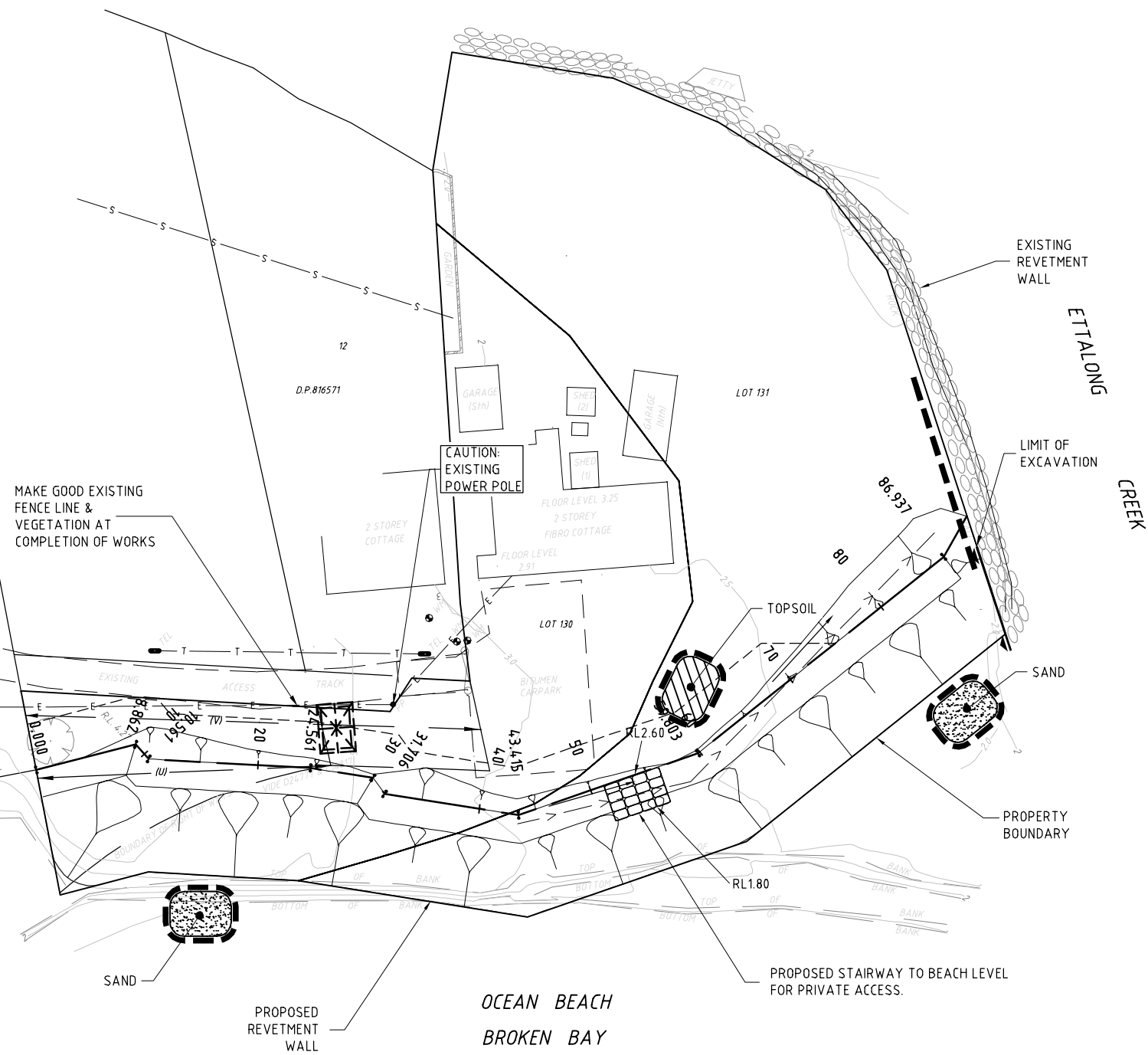




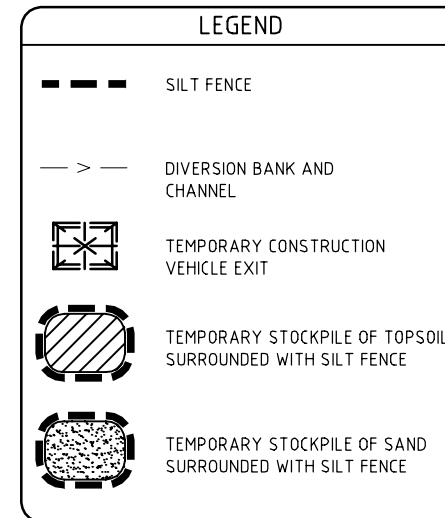
DATE PUBLISHED: 21 February, 2014 - 9:26am

BERRIMA CRESCENT

MAKE GOOD EXISTING FENCE LINE & VEGETATION AT COMPLETION OF WORKS



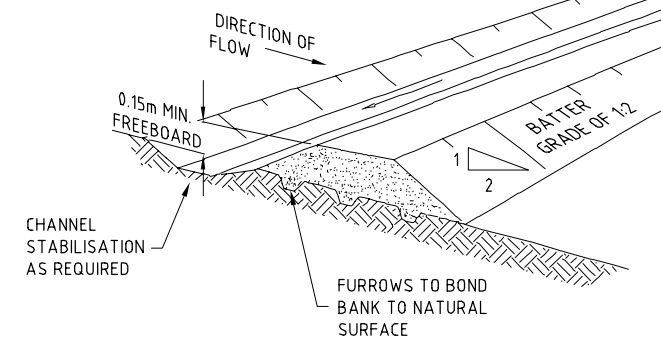
PLAN  
SCALE 1:250



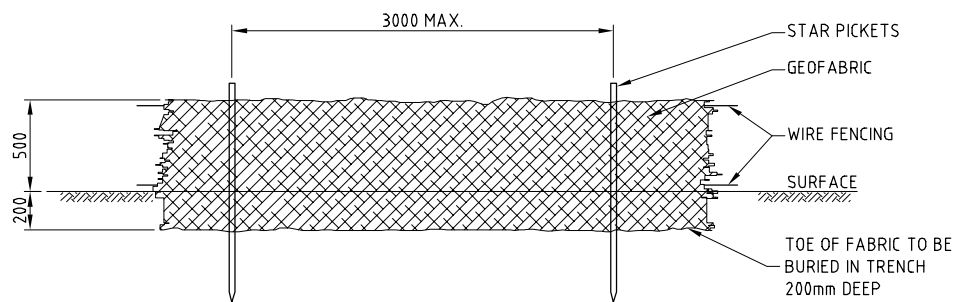
**EROSION AND SEDIMENTATION CONTROL**

- SE1 INSTALL TEMPORARY CONSTRUCTION VEHICLE EXIT IN ACCORDANCE WITH DETAIL ON THIS DRAWING.
  - SE2 INSTALL SILT FENCING IN ACCORDANCE WITH DETAILS ON THIS DRAWING AND LOCAL COUNCIL REQUIREMENTS.
  - SE3 STRIP VEGETATION FROM ALL CUT AREAS AND DISPOSE OFF SITE
  - SE4 STRIP TOPSOIL FROM ALL CUT AREAS AND STOCKPILE ON SITE. DISPOSE OF EXCESS SPOIL OFF SITE.
  - SE5 EXCAVATE ALL CUT AREAS AND PLACE COMPACTED FILL WHERE REQUIRED.
  - SE6 ALL ADJACENT LANDSCAPE AREAS ARE TO BE STABILISED AND VEGETATED WITHIN 20 DAYS OF PROJECT COMPLETION.
  - SE7 EXCAVATE, LAY AND BACKFILL REVETMENT WALL. OPEN TRENCH LENGTHS / LENGTH OF WALL BEING CONSTRUCTED IS NOT TO EXCEED 15 METRES. WHERE TRENCHES OR WALL SLOPES ARE OPEN OVER NIGHT, PLACE TEMPORARY TURF LINED SWALE ALONG PROPERTY SIDE OF TRENCH AND DIVERT POTENTIAL SURFACE WATER TO A SAFE LOCATION.
  - SE8 AT THE COMPLETION OF ALL WORK, REMOVE EROSION CONTROL MEASURES. RESTORE GROUND TO MINIMISE EROSION AND SEDIMENT PRODUCTION USING GRASS SEED AND MULCH ALL OVER AND TURF STRIPS 900 WIDE.
- NOTE: WHEREVER SEDIMENT AND EROSION CONTROL DEVICES ARE REMOVED EARLIER IN THE CONSTRUCTION SEQUENCE THAN AS SPECIFIED ABOVE, ENSURE THAT THE DISTURBED GROUND IS RE-VEGETATED TO REDUCE THE LIKELIHOOD OF EROSION AND SEDIMENT TRANSPORT FROM THE SITE. ENSURE ALSO THAT SEDIMENT LADEN WATER CAN STILL REACH SEDIMENTATION BASINS FOR TREATMENT.

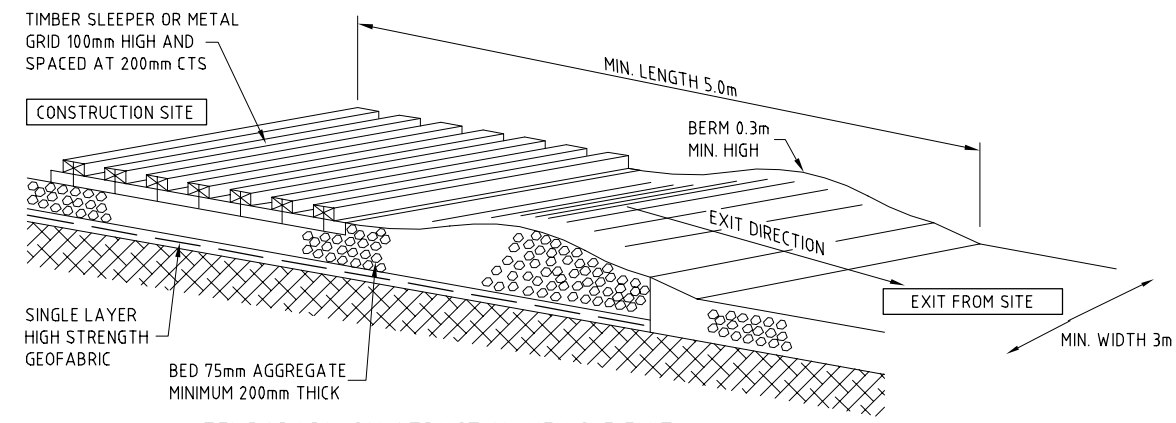
FOR CATCHMENT GREATER THAN 2ha



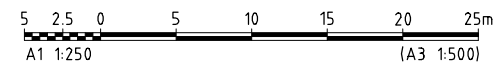
DIVERSION BANK AND CHANNEL  
NTS



TYPICAL SILT FENCE DETAIL  
NTS



TEMPORARY CONSTRUCTION VEHICLE EXIT  
NTS



CAD FILE: P:\89024\_30\_Miscellaneous\89024\_30\_B\_Berrima\_Cr\_Umina Beach\Civil\89024\_30-C002-D1.dwg

© Cardno (NSW/ACT) Pty Ltd All Rights Reserved 2004  
Copyright in the whole and every part of this drawing belongs to Cardno (NSW/ACT) Pty Ltd and may not be used, sold, transferred, copied or reproduced in whole or in part in any manner or form or on any media, to any person other than by agreement with Cardno (NSW/ACT) Pty Ltd.

This document is produced by Cardno (NSW/ACT) Pty Ltd solely for the benefit of and use by the client in accordance with the terms of the contract. Cardno (NSW/ACT) Pty Ltd does not and shall not assume any responsibility or liability whatsoever to any third party arising out of any use or reliance by third party on the content of this document.

REV	DATE	REVISIONS	DRN	CHK
2	19/02/14	ISSUED FOR D.A. APPROVAL	LDB	SJB
1	12/7/13	ISSUED FOR D.A. APPROVAL	LDB	SJB

DESIGNED: JAD	DATUM: AHD	A1
DRAWN: LDB	COORDINATE SYSTEM:	
CHECKED: SJB	APPROVED:	
RECOMMENDED:	PROJECT MANAGER: DATE	PROJECT DIRECTOR: DATE

**Cardno**  
Cardno (NSW/ACT) Pty Ltd  
ABN: 95 001 145 035  
Suite 34, 207 Albany Street North, Gosford, NSW Australia 2250  
Phone: +61 21 4323 2558 Fax: +61 21 4324 3251  
Email: cc@centralcoast.cardno.com.au Web: www.cardno.com.au

Mr PAUL McCLOSKEY  
PROPOSED SUBDIVISION AT 8 BERRIMA CR., UMINA BEACH  
EROSION AND SEDIMENT CONTROL PLAN  
PROPOSED REVETMENT WALL

DRAWING STATUS: <b>PRELIMINARY</b>	
DRAWING NUMBER: <b>89024430-C002</b>	REV <b>2</b>