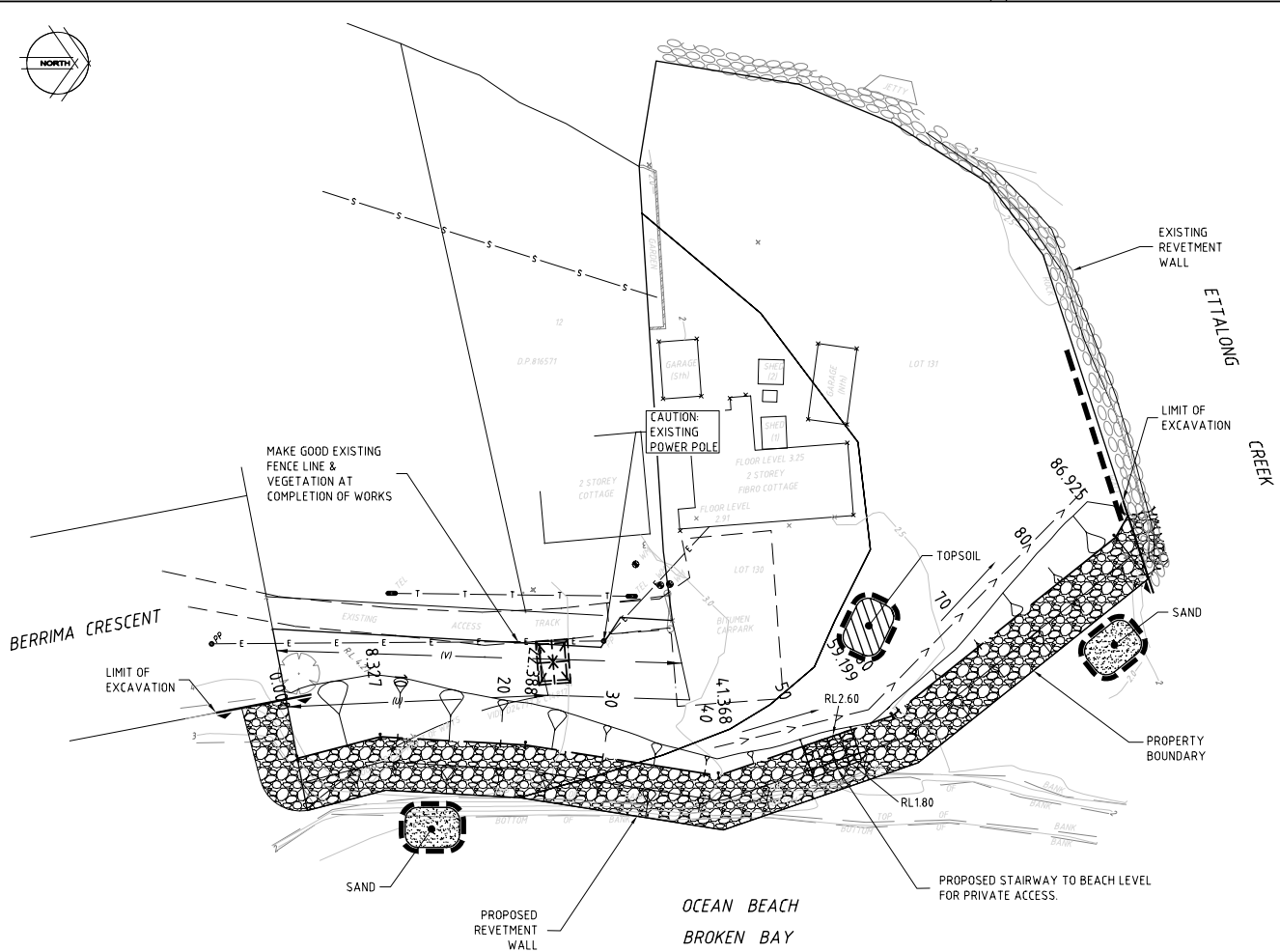
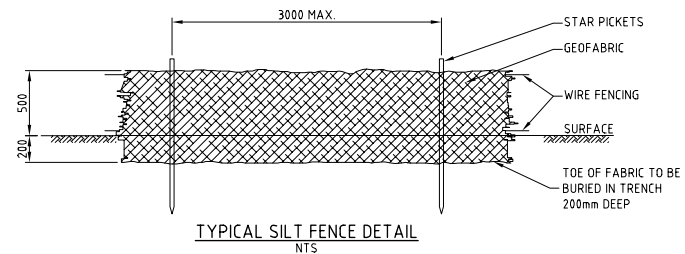




DATE PLOTTED: 07 August, 2013 - 15:04pm
 C:\Users\19025139_1\Documents\19025139_1_Berrima_Cr\19025139-C002-01.dwg
 USER: 19025139_1
 PLOTTER: HP DesignJet 2450



PLAN
SCALE 1:250

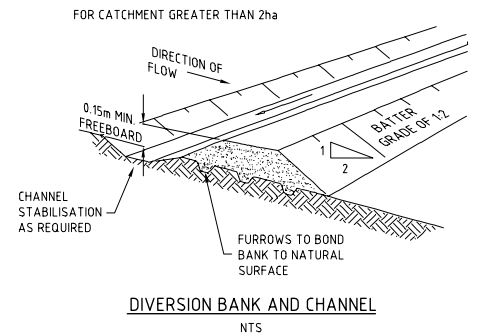


TYPICAL SILT FENCE DETAIL
NTS

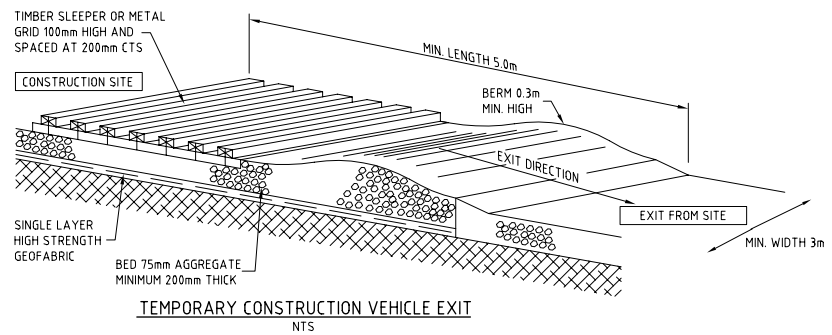
LEGEND

- SILT FENCE
- DIVERSION BANK AND CHANNEL
- TEMPORARY CONSTRUCTION VEHICLE EXIT
- TEMPORARY STOCKPILE OF TOPSOIL SURROUNDED WITH SILT FENCE
- TEMPORARY STOCKPILE OF SAND SURROUNDED WITH SILT FENCE

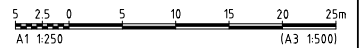
- EROSION AND SEDIMENTATION CONTROL**
- SE1 INSTALL TEMPORARY CONSTRUCTION VEHICLE EXIT IN ACCORDANCE WITH DETAIL ON THIS DRAWING.
 - SE2 INSTALL SILT FENCING IN ACCORDANCE WITH DETAILS ON THIS DRAWING AND LOCAL COUNCIL REQUIREMENTS.
 - SE3 STRIP VEGETATION FROM ALL CUT AREAS AND DISPOSE OFF SITE
 - SE4 STRIP TOPSOIL FROM ALL CUT AREAS AND STOCKPILE ON SITE. DISPOSE OF EXCESS SPOIL OFF SITE.
 - SE5 EXCAVATE ALL CUT AREAS AND PLACE COMPACTED FILL WHERE REQUIRED.
 - SE6 ALL ADJACENT LANDSCAPE AREAS ARE TO BE STABILISED AND VEGETATED WITHIN 20 DAYS OF PROJECT COMPLETION.
 - SE7 EXCAVATE, LAY AND BACKFILL REVETMENT WALL. OPEN TRENCH LENGTHS / LENGTH OF WALL BEING CONSTRUCTED IS NOT TO EXCEED 10 METRES. WHERE TRENCHES OR WALL SLOPES ARE OPEN OVER NIGHT, PLACE TEMPORARY TURF LINED SWALE ALONG PROPERTY SIDE OF TRENCH AND DIVERT POTENTIAL SURFACE WATER TO A SAFE LOCATION.
 - SE8 AT THE COMPLETION OF ALL WORK, REMOVE EROSION CONTROL MEASURES. RESTORE GROUND TO MINIMISE EROSION AND SEDIMENT PRODUCTION USING GRASS SEED AND MULCH ALL OVER AND TURF STRIPS 900 WIDE.
- NOTE: WHEREVER SEDIMENT AND EROSION CONTROL DEVICES ARE REMOVED EARLIER IN THE CONSTRUCTION SEQUENCE THAN AS SPECIFIED ABOVE, ENSURE THAT THE DISTURBED GROUND IS RE-VEGETATED TO REDUCE THE LIKELIHOOD OF EROSION AND SEDIMENT TRANSPORT FROM THE SITE. ENSURE ALSO THAT SEDIMENT LADEN WATER CAN STILL REACH SEDIMENTATION BASINS FOR TREATMENT.



DIVERSION BANK AND CHANNEL
NTS



TEMPORARY CONSTRUCTION VEHICLE EXIT
NTS



DESIGNED	JAD	DATUM	AHD	A1
DRAWN	LDB	COORDINATE SYSTEM		
CHECKED	SUB			
RECOMMENDED		APPROVED		
PROJECT MANAGER	DATE	PROJECT DIRECTOR	DATE	

© Cardno (NSW/ACT) Pty Ltd All Rights Reserved 2004
 Copyright in the whole and every part of this drawing belongs to Cardno (NSW/ACT) Pty Ltd and may not be used, sold, transferred, copied or reproduced in whole or in part in any manner or form or on any media, to any person other than by agreement with Cardno (NSW/ACT) Pty Ltd.

This document is produced by Cardno (NSW/ACT) Pty Ltd solely for the benefit and use by the client in accordance with the terms of the contract. Cardno (NSW/ACT) Pty Ltd does not and shall not assume any responsibility or liability whatsoever to any third party arising out of any use or reliance by third party on the content of this document.

REV	DATE	ISSUED FOR D.A. APPROVAL	REVISIONS	LDN	SJB
1	12/7/13				

DESIGNED	JAD	DATUM	AHD	A1
DRAWN	LDB	COORDINATE SYSTEM		
CHECKED	SUB			
RECOMMENDED		APPROVED		
PROJECT MANAGER	DATE	PROJECT DIRECTOR	DATE	

Cardno
 Cardno (NSW/ACT) Pty Ltd
 ABN 95 011 145 035
 Suite 34, 207 Albany Street South, Geelong, VIC Australia 2250
 Phone (61) 2-522 5258 Fax (61) 2-522 2021
 Email: co@centralcoast.cardno.com.au Web: www.cardno.com.au

Mr PAUL McCLOSKEY
 PROPOSED SUBDIVISION AT 8 BERRIMA CR., UMINA BEACH
 EROSION AND SEDIMENT CONTROL PLAN
 PROPOSED REVETMENT WALL

DRAWING STATUS	PRELIMINARY
DRAWING NUMBER	89024430-C002
REV	1

0 10 20 30 40 50 60 70 80 90 100 110 120 130 140 150mm A1 ON ORIGINAL