



Office of
Environment
& Heritage

How to Export ‘Overcleared’ Landscapes Data

Quick Guide for the VIS Classification Database



gateway to NSW biodiversity information

How to Export 'Overcleared' Landscapes Data

BioMetric 'Overcleared' Landscapes (OCL) data are maintained in the Vegetation Information System (VIS) Classification database. This document provides a quick guide on how to access the database to export OCL data to CSV files. OCL data are not CMA-based, hence these instructions produce an export of all OCL data.

1. Login to the VIS Classification Database

Register and access the database (use your email as login ID)

<http://www.environment.nsw.gov.au/NSWVCA20PRapp/LoginPR.aspx>

2. Search options for reports and exports

Select **Communities** tab then **Reports/Exports**



3. Choose your search type

Select **State-wide searches**, **Exports** and then **Quick Search**

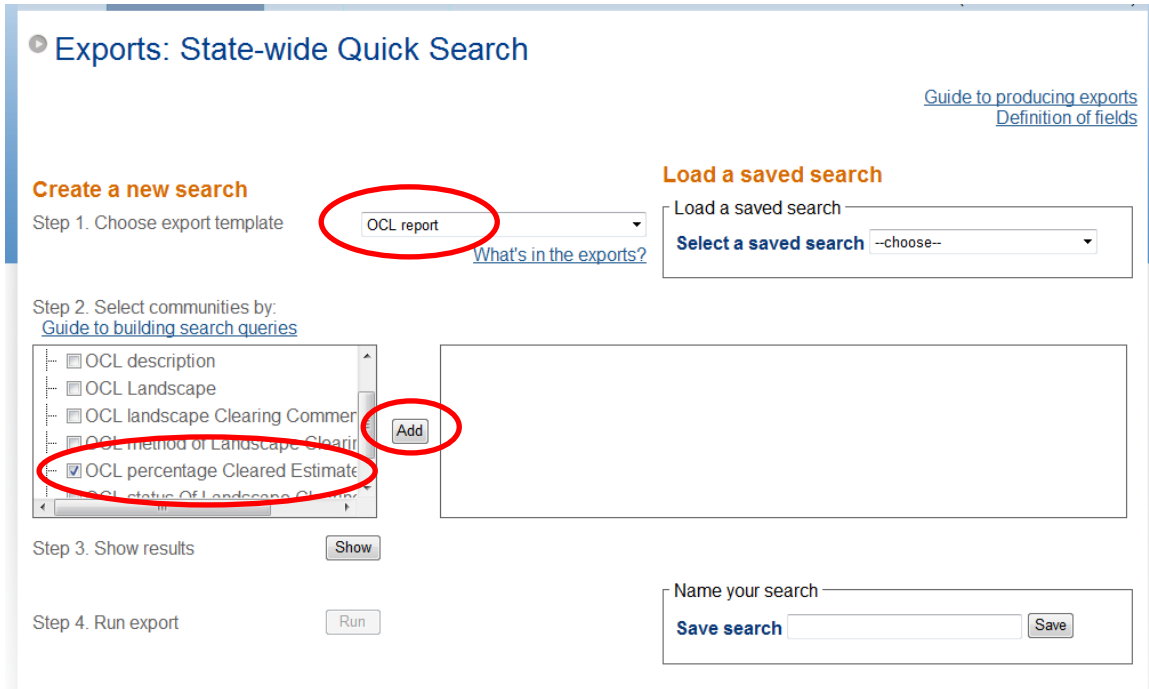
- State-wide Searches Full Field Searches
- Reports Exports
- Quick Search
- Advanced Search

4. Select export parameters

Step 1: Choose export template as **OCL report** by selecting from the dropdown menu

Step 2: Select communities by **OCL percentage Cleared Estimate** using the scroll bar to search options

Select **Add**



A window will pop up asking you to select search condition

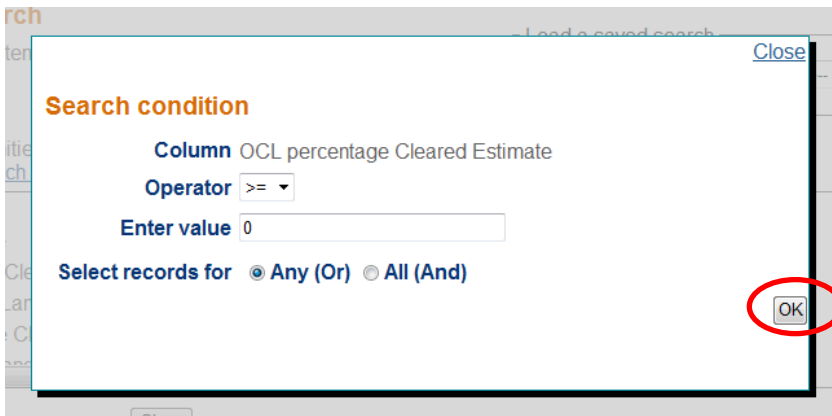
Select search conditions as:

Operator **>=**

Attribute value **0**

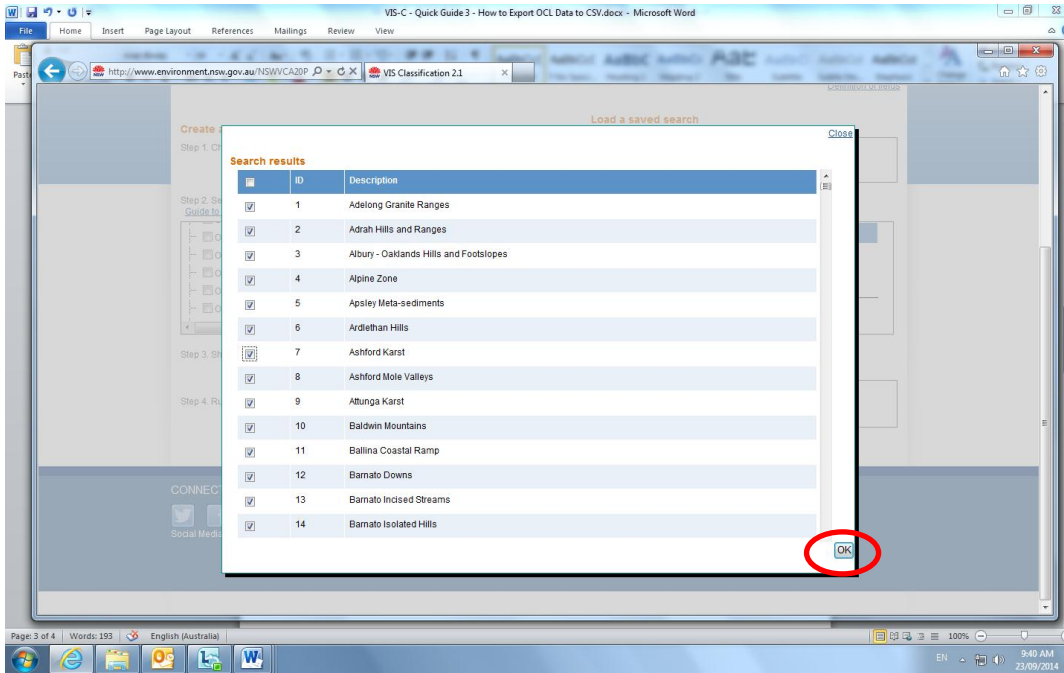
Select records for **Any (Or)**

Select **OK** to close display window

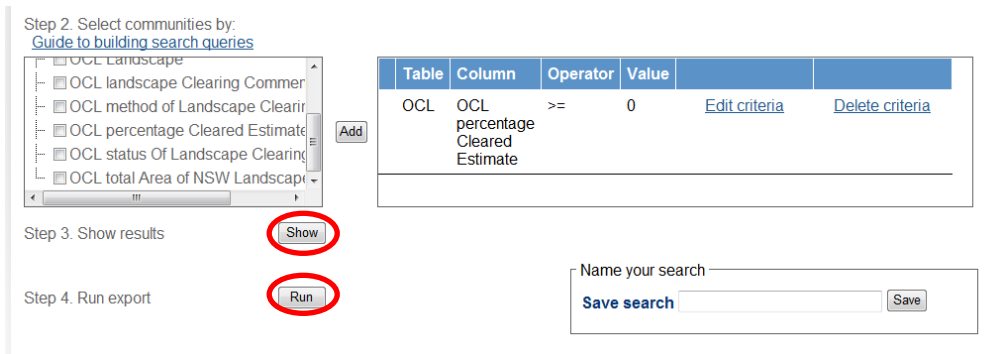


Step 3: Show results by selecting Show

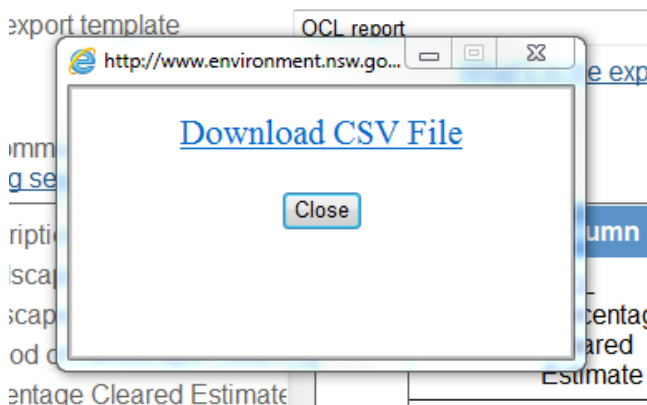
The results can be refined by deselecting the check box to the left of each 'Overcleared' Landscape
Select **OK** to close display window



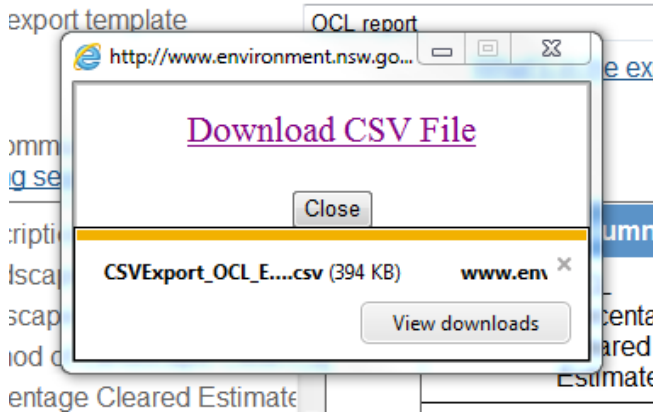
Step 4: Run report by selecting Run



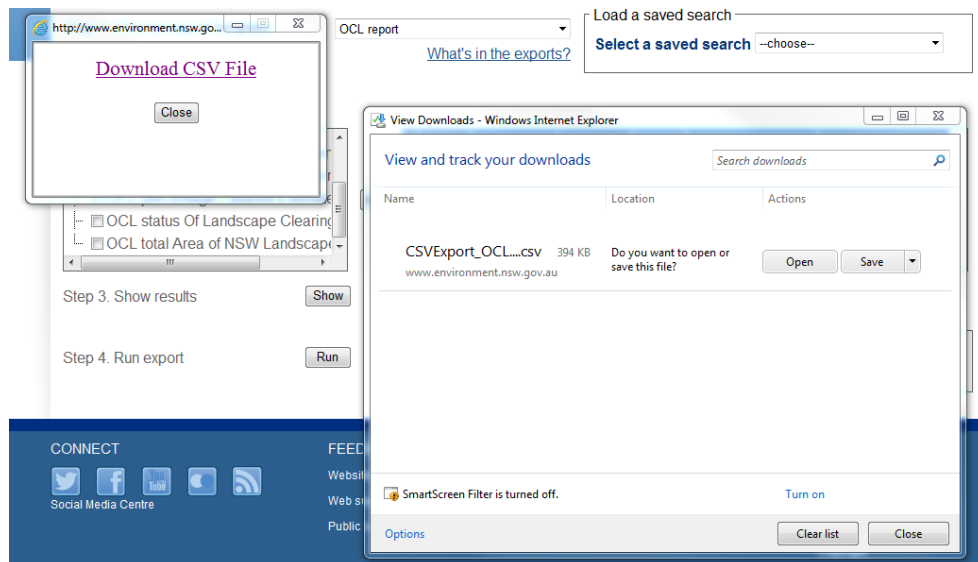
5. Download CSV file



View downloads



Open or Save results



For further information:

Refer to the VIS Classification public user manual

<http://www.environment.nsw.gov.au/resources/research/140286VISPUM.pdf>

Contact the Biodiversity Information Systems Team email VIS@environment.nsw.gov.au

© 2015 State of NSW and Office of Environment and Heritage

The State of NSW and the Office of Environment and Heritage are pleased to allow this material to be reproduced in whole or in part for educational and non-commercial use, provided the meaning is unchanged and its source, publisher and authorship are acknowledged.

Office of Environment and Heritage has compiled How to Export 'Overcleared' Landscapes Data in good faith, exercising all due care and attention. No representation is made about the accuracy, completeness or suitability of the information in this publication for any particular purpose. OEH shall not be liable for any damage which may occur to any person or organisation taking action or not on the basis of this publication. This document is subject to revision without notice and it is up to the reader to ensure that the latest version is being used. Readers should seek appropriate advice when applying the information to their specific needs.

Published by:

Office of Environment and Heritage

59–61 Goulburn Street, Sydney South 1232

Phone: 131 555 (environment information and publications requests)

Phone: 1300 361 967 (national parks, climate change and energy efficiency information and publications requests) where content relates to these areas]

TTY users: phone 133 677, then ask for 131 555

Email: info@environment.nsw.gov.au

Website: www.environment.nsw.gov.au

Report pollution and environmental incidents:

Environment Line: 131 555 (NSW only) or info@environment.nsw.gov.au

OEH 2015/0022

ISBN 978 1 74359 870 2

January 2015

Version 1.0