

**NOTES**

DEPTHS (eg 2.1) - ARE SHOWN IN METRES AND DECIMETRES BELOW AUSTRALIAN HEIGHT DATUM.

DRYING HEIGHTS (eg 2.1) - ARE SHOWN IN METRES AND DECIMETRES ABOVE AUSTRALIAN HEIGHT DATUM.

RIVER AND BEACH PROFILE SURVEY - BY S.MURRAY & D.BURNETT IN AUGUST 1999 USING TOTAL STATION & RTK GPS TECHNIQUES.

OFFSHORE BATHYMETRIC SURVEY - BY S.HOLTZNAGEL ON 29TH NOVEMBER 2000 USING SURVEY VESSEL 'SEASCAN' WITH AN ODOM DF3200 ECHOTRAC ECHOSOUNDER.

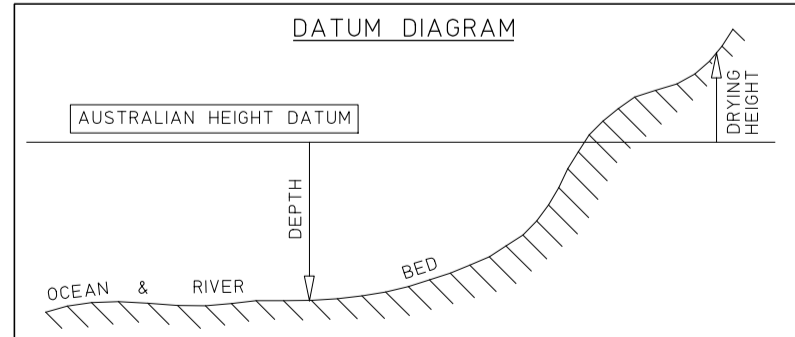
SURVEY VESSEL NAVIGATION - BY ASHTECH MX10GPS USING THE BATHURST 'OMNISTAR' REFERENCE STATION.

CREEK SECTIONS (SHEETS 3-7) - HAVE ALL BEEN DRAWN AS SEEN LOOKING DOWNSTREAM.

PHOTOGRAMMETRIC COMPONENT - WATERWAY & ISLAND AREAS, ROCK OUTCROPS, ROADS, TRACKS, BUILDINGS, ETC HAVE BEEN LOCATED BY AERIAL PHOTOGRAPHY TAKEN ON THE 29-1-1993.

**LEGEND**

- APPROX. WATERWAY AREA
- ROCK OUTCROPS
- DEPTH CONTOURS
- HEIGHT CONTOURS
- ROADS
- TRACKS
- BUILDINGS



B 54169

B 54169

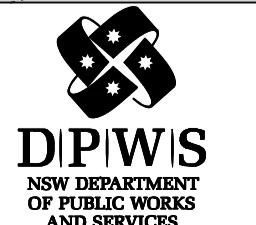
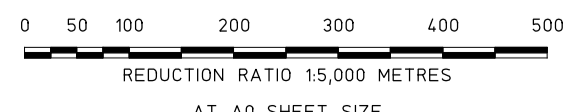
SHEET 2

© CROWN COPYRIGHT 2001  
 MINISTER FOR PUBLIC WORKS AND SERVICES  
 NEW SOUTH WALES  
 DICK PERSSON DIRECTOR GENERAL

**DATUM:** AUSTRALIAN HEIGHT DATUM

CAUTION  
 THIS PLAN HAS BEEN PRODUCED AT THE SCALE/S SHOWN BELOW FOR THE PURPOSE OF AN ESTUARY MANAGEMENT STUDY AND SHOULD NOT BE USED FOR ANY OTHER PURPOSE.

CO-ORDINATES - I.S.G. ZONE 56/1  
 CONTOUR INTERVAL - 0.5 m  
 SURVEYOR - S. MURRAY & S. HOLTZNAGEL  
 SURVEY DATE/S - AUG. 1999 & NOV. 2000  
 CAD OPERATOR - B. WOOD  
 JOB CONTROLLER - A. R. GORDON  
 FILE REFERENCE - 19.010.674  
 JOB INSTRUCTION - 44486



SURVEYING & SPATIAL INFORMATION SERVICES  
 LEVEL 10 MCKELL BUILDING  
 2-24 RANGON PLACE SYDNEY  
 TEL (02) 9372 7903 FAX (02) 9372 7922

VERIFIED - S.MURRAY 19/12/2001  
 VALIDATED - A.GORDON 20/12/2001  
 MANAGER - G.C.MILLWAINE 20/12/2001

**CROOKED RIVER  
 HYDROGRAPHIC SURVEY  
 INDEX & CROSS SECTION LOCATION PLAN**

SHEET No	1
No IN SET	7
PLAN ROOM CAT No	54169

MK	DETAILS OF AMENDMENTS	APPROVED	DATE