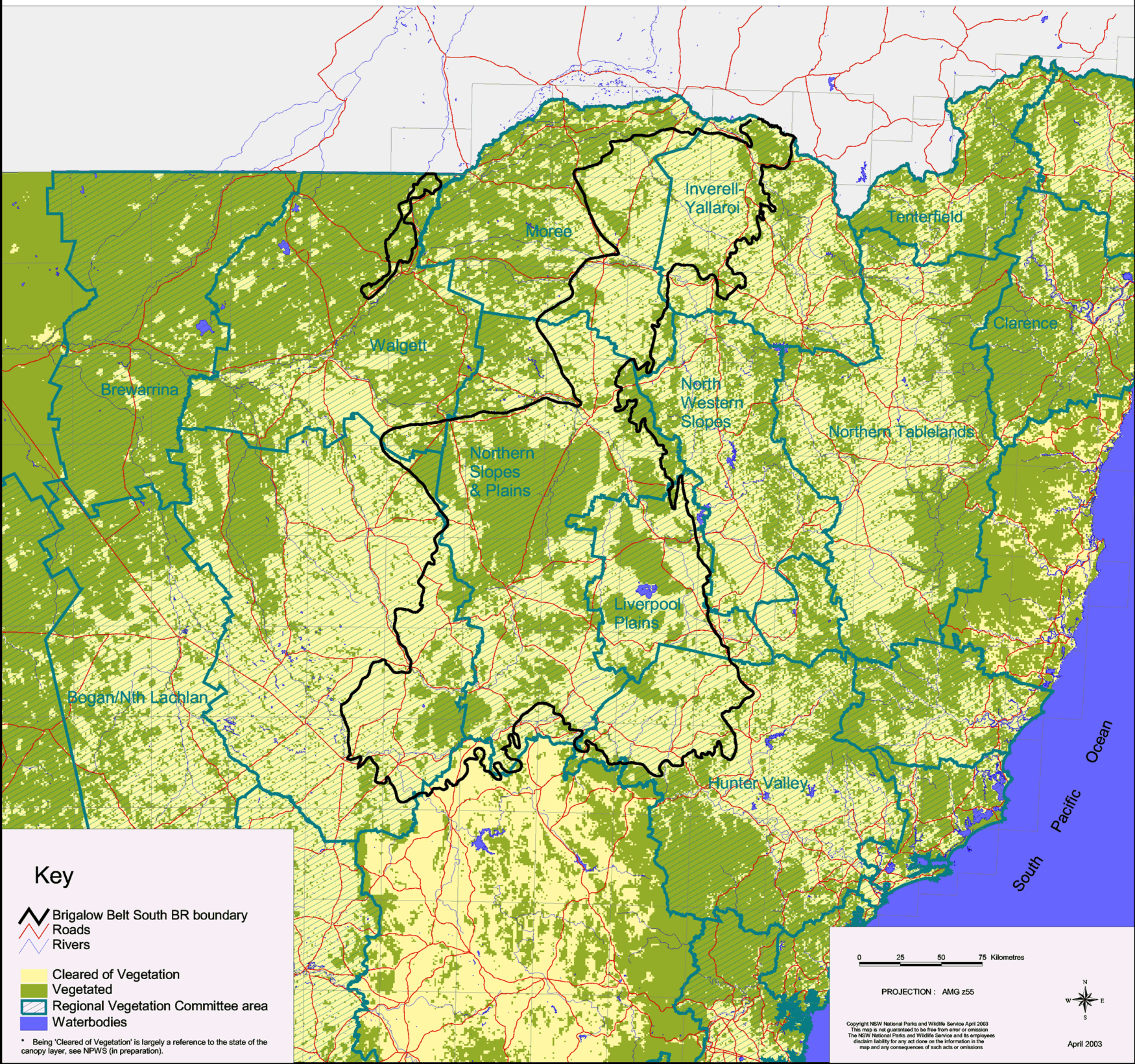







Brigalow Belt South Biogeographic Region (IBRA) - Vegetation



Key

-  Brigalow Belt South BR boundary
-  Roads
-  Rivers

-  Cleared of Vegetation
-  Vegetated
-  Regional Vegetation Committee area
-  Waterbodies

* Being 'Cleared of Vegetation' is largely a reference to the state of the canopy layer, see NPWS (in preparation).

0 25 50 75 Kilometres

PROJECTION : AMG z55

Copyright NSW National Parks and Wildlife Service April 2003
 This map is not guaranteed to be free from error or omission.
 The NSW National Parks and Wildlife Service and its employees
 disclaim liability for any act done on the information in the
 map and any consequences of such acts or omissions.



April 2003