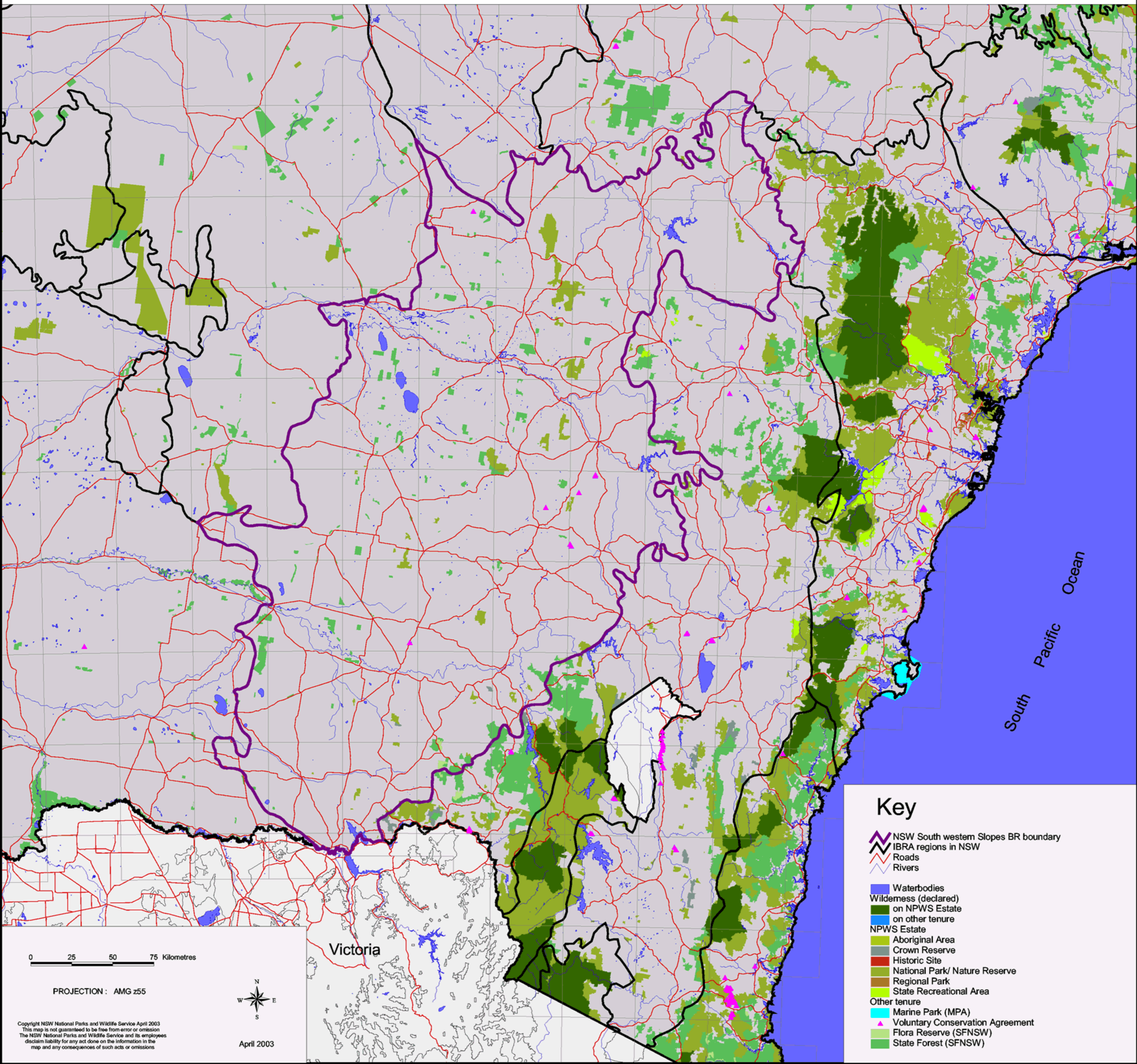


# NSW South Western Slopes Biogeographic Region (IBRA) - Tenure/Reserves



### Key

- NSW South western Slopes BR boundary
- IBRA regions in NSW
- Roads
- Rivers
- Waterbodies
- Wilderness (declared)**
- on NPWS Estate
- on other tenure
- NPWS Estate**
- Aboriginal Area
- Crown Reserve
- Historic Site
- National Park/ Nature Reserve
- Regional Park
- State Recreational Area
- Other tenure**
- Marine Park (MPA)
- Voluntary Conservation Agreement
- Flora Reserve (SFNSW)
- State Forest (SFNSW)

0 25 50 75 Kilometres

PROJECTION : AMG z55



April 2003

Copyright NSW National Parks and Wildlife Service April 2003  
 This map is not guaranteed to be free from error or omission  
 The NSW National Parks and Wildlife Service and its employees  
 disclaim liability for any act done on the information in the  
 map and any consequences of such acts or omissions

Victoria

South Pacific Ocean