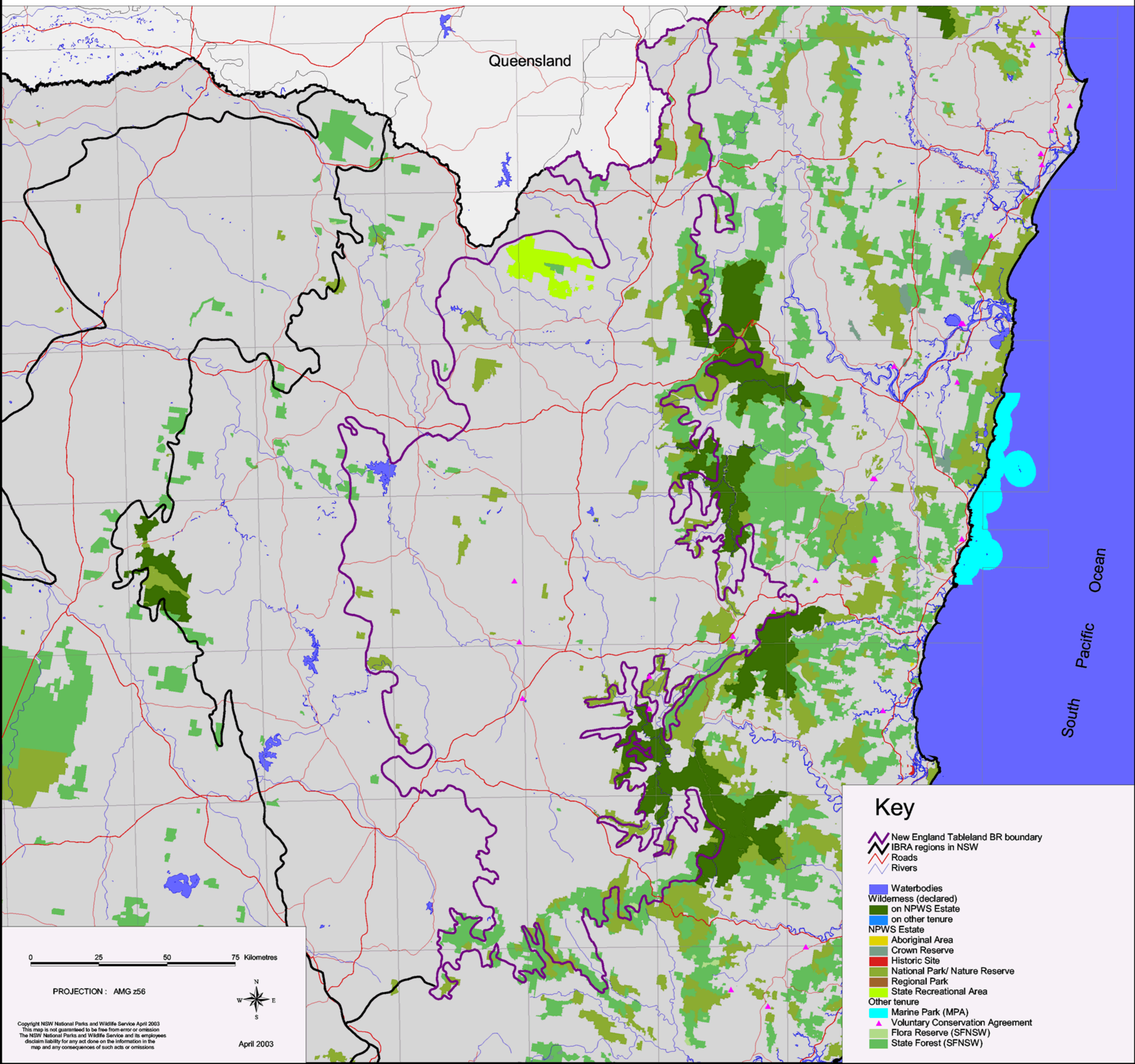


New England Tableland Biogeographic Region (IBRA) - Tenure/Reserves



Queensland

South Pacific Ocean

Key

- New England Tableland BR boundary
- IBRA regions in NSW
- Roads
- Rivers
- Waterbodies
- Wilderness (declared)**
 - on NPWS Estate
 - on other tenure
- NPWS Estate**
 - Aboriginal Area
 - Crown Reserve
 - Historic Site
 - National Park/ Nature Reserve
 - Regional Park
 - State Recreational Area
- Other tenure**
 - Marine Park (MPA)
 - Voluntary Conservation Agreement
 - Flora Reserve (SFNSW)
 - State Forest (SFNSW)

0 25 50 75 Kilometres

PROJECTION : AMG z56



April 2003

Copyright NSW National Parks and Wildlife Service April 2003
This map is not guaranteed to be free from error or omission
The NSW National Parks and Wildlife Service and its employees
disclaim liability for any act done on the information in the
map and any consequences of such acts or omissions