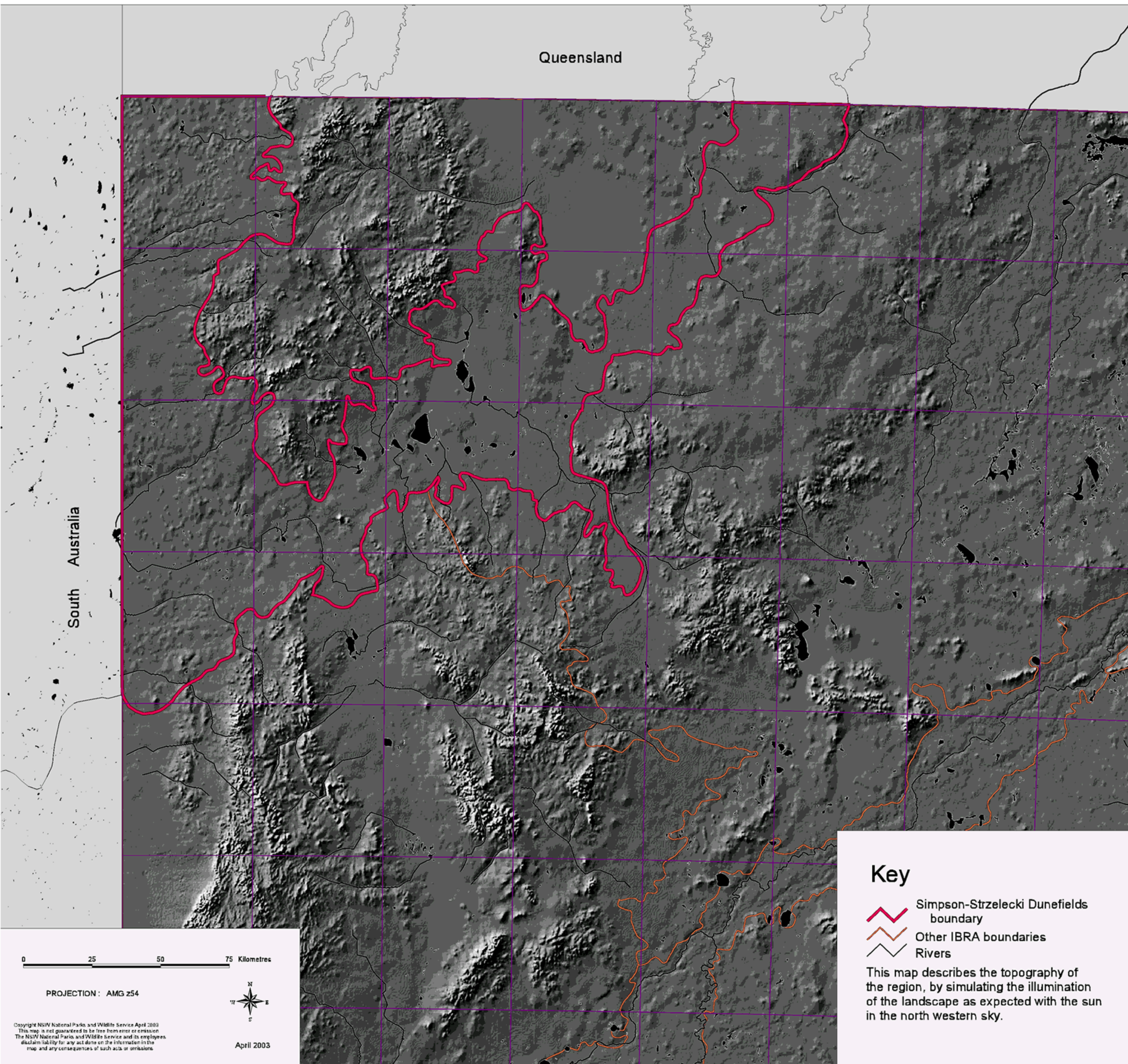


# Simpson-Strzelecki Dunefields Biogeographic Region (IBRA) - Topography



Queensland

South Australia




0 25 50 75 Kilometres

PROJECTION : AMG z54



April 2003

## Key

-  Simpson-Strzelecki Dunefields boundary
-  Other IBRA boundaries
-  Rivers

This map describes the topography of the region, by simulating the illumination of the landscape as expected with the sun in the north western sky.