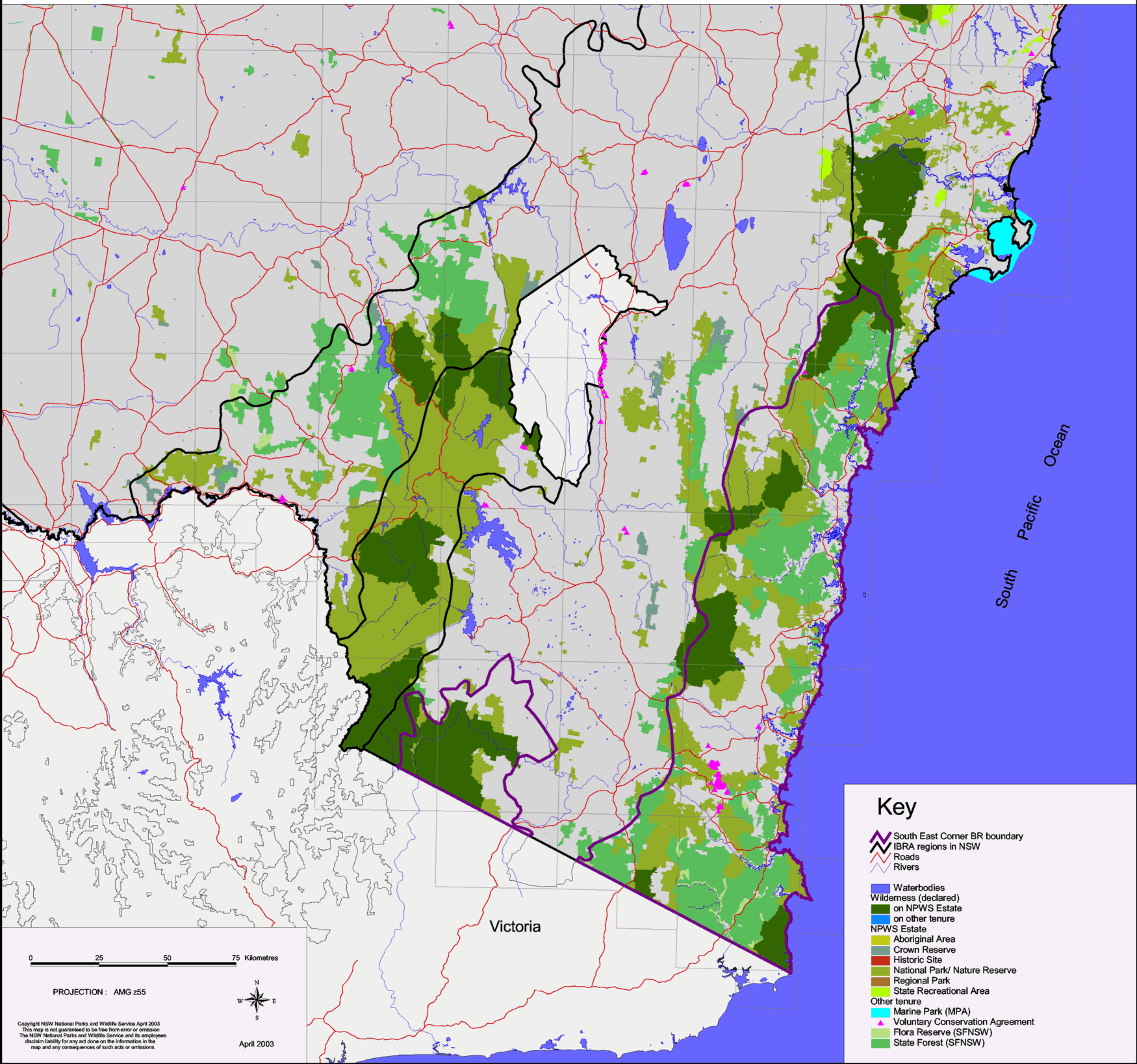


South East Corner Biogeographic Region (IBRA) - Tenure/Reserves



Key

- South East Corner BR boundary
- IBRA regions in NSW
- Roads
- Rivers
- Waterbodies
- Wilderness (declared)**
- on NPWS Estate
- on other tenure
- NPWS Estate**
- Aboriginal Area
- Crown Reserve
- Historic Site
- National Park/ Nature Reserve
- Regional Park
- State Recreational Area
- Other tenure**
- Marine Park (MPA)
- Voluntary Conservation Agreement
- Flora Reserve (SFNSW)
- State Forest (SFNSW)

0 25 50 75 Kilometres

PROJECTION : AMG z55



April 2003

Copyright NSW National Parks and Wildlife Service April 2003
 This map is not guaranteed to be free from error or omission
 The NSW National Parks and Wildlife Service and its employees
 disclaim liability for any act done on the information in the
 map and any consequences of such acts or omissions