

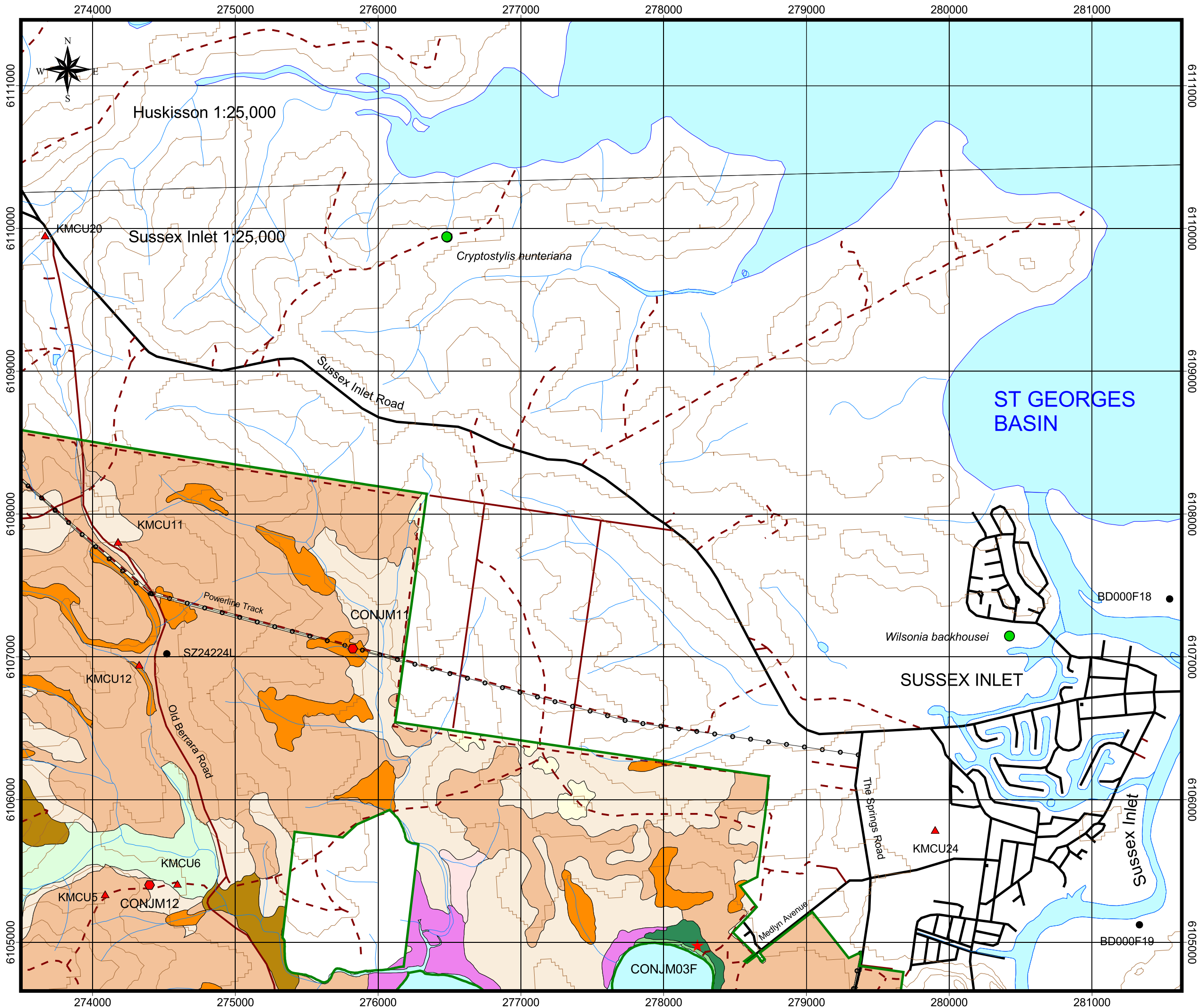
FOREST ECOSYSTEMS VALIDATION

CONJOLA NATIONAL PARK

MAP 3 - NORTH EAST

Map Scale 1:25,000

Map prepared February 2004 by Phil Kendall for NGH Environmental Pty Ltd, under contract to NPWS South Coast Region.



- National Park external boundary
- 100 metre contours
- 10 metre contours
- Access Roads and Trails
- Highway
- Minor Roads
- Other Roads
- Vehicle Trail
- Walking Trail
- Powerline
- Drainage (1:25,000)
- Water Bodies

- Previous survey sites
- Canopy Floristics only with Cover Abundance
 - Full Floristics with Cover Abundance
 - Full Floristics with Presence Absence only
 - Partial Floristics Only with Cover Abundance
 - Partial Floristics with Cover Abundance
- New survey sites (October 2003)
- Standard sites
 - Fire response monitoring sites

- Rare and Threatened Flora
- Threatened Flora (TSCA)
 - ROTAP listed flora

- Forest Ecosystems on this map sheet
- 2 Lowland Red Bloodwood - Turpentine Dry Shrub Forest
 - 5 Jervis Bay Lowland Dry Forest
 - 21 Spotted Gum - Blackbutt Moist Forest
 - 24 Swamp Oak - Swamp Paperbark Forest
 - 27 Ecotonal Swamp Forest
 - 139 Scribbly Gum - Red Bloodwood Heathy Woodland
 - 139/2 Mixed Lowland Red Bloodwood - Turpentine Dry Shrub Forest and Scribbly Gum - Red Bloodwood Heathy Woodland
 - 140 Wet Heath
 - 144 Woollybutt - Paperbark Woodland
 - 175 Coastal Lowlands Swamp Mahogany Forest
 - Cleared