

FOREST ECOSYSTEMS VALIDATION

CONJOLA NATIONAL PARK

(ALSO SHOWING NARRAWALLEE CREEK NATURE RESERVE)

MAP 8 - SOUTH

Map Scale 1:25,000

Map prepared February 2004 by Phil Kendall for NGH Environmental Pty Ltd, under contract to NPWS South Coast Region.

- National Park/Nature Reserve external boundary
- 100 metre contours
- 10 metre contours

Access Roads and Trails

- Highway
- Minor Roads
- Other Roads
- Vehicle Trail
- Walking Trail

Drainage (1:25,000)

Water Bodies

Previous survey sites

- Canopy Floristics only with Cover Abundance
- Full Floristics with Cover Abundance
- Full Floristics with Presence Absence only
- Partial Floristics Only with Cover Abundance
- Partial Floristics with Cover Abundance

New survey sites (October 2003)

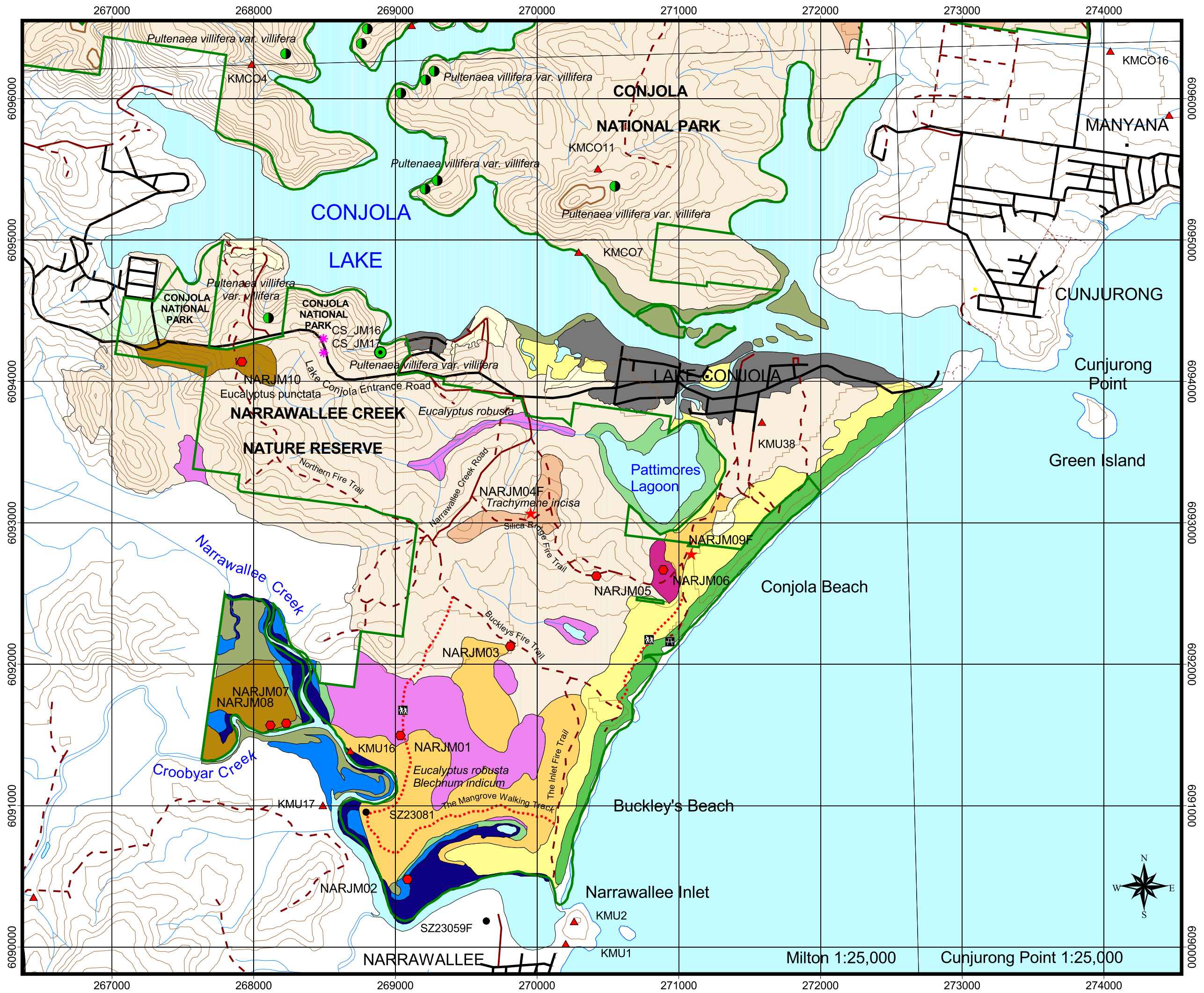
- Standard sites
- Fire response monitoring sites
- New survey sites (October 2003)

Rare and Threatened Flora

- Threatened Flora (TSCA)
- ROTAP listed flora
- Additional ROTAP site listed 2004

Forest Ecosystems on this map sheet

- 2 Lowland Red Bloodwood - Turpentine Dry Shrub Forest
- 5 Jervis Bay Lowland Dry Forest
- 21 Spotted Gum - Blackbutt Moist Forest
- 22/23 Dune/Headland Scrub and Beach Strand Grassland Complex
- 24 Swamp Oak - Swamp Paperbark Forest
- 25 Swamp Oak Forest
- 28 Coastal Sands Bangalay - Banksia Forest
- 29 Coastal Sands Blackbut - Banksia Forest
- 139 Scribbly Gum - Red Bloodwood Heathy Woodland
- 171 Coastal Red Gum Grassy Forest
- 175 Coastal Lowlands Swamp Mahogany Forest
- 185 Mangrove Forest
- 186 Saltmarsh
- Cleared
- Urban development



Milton 1:25,000

Conjurong Point 1:25,000