

MU 31 MONTANE RIDGE BROAD-LEAVED PEPPERMINT – MOUNTAIN GUM GRASSY FOREST

❑ CORRESPONDING CLASSIFICATIONS

Regional: DSF14 Western Tablelands Dry Forest

State: Southern Tableland Dry Sclerophyll Forests

Number of Sites: 9

Average number of identified native species per plot: 25.0

❑ DESCRIPTION

The shallow soils on ridges and exposed slopes of the tablelands support a dry forest with an uneven canopy. Taller mountain gum (*E. dalrympleana*) grow above an abundance of broad-leaved peppermint (*E. dives*) that stand as a smaller tree layer, sometimes with brittle gum (*E. mannifera*). Shrubs are patchy in cover and may include *Acacia dealbata*, *Daviesia latifolia*, *Lomatia myricoides* and *Monotoca scoparia*. The groundcover is a mosaic of snow grass (*Poa sieberiana*), red-anther wallaby grass (*Joycea pallida*) and lomandras (*Lomandra glauca* and *L. longifolia*). Open patches of bare earth and litter is also prominent.

The community is found between 880 metres to 1280 metres above sea level, primarily on metamorphic substrates of Ordovician, Silurian and Devonian quartzite, slate, ignimbrite and limestone. Soils are typically shallow lithosols including clay loams and sandy loams. Average precipitation is between 850 millimetres to 1100 millimetres *per annum*.

The map unit is comparable to Western Tablelands Dry Forest of Tindall *et al.* (2004) and a component of the Southern Tableland Dry Sclerophyll Forests of Keith (2004). Small areas are present in Kanangra-Boyd National Park, although across the catchment Tindall *et al.*, 2004 suggest that between 35 to 55 percent of the original extent has been cleared, with less than fifteen percent protected in formal reserves.



❑ STRUCTURAL SUMMARY

Stratum	Count	AvLowHt	AvHt	maxHt	AvCover	SDcover	minCover	maxCover
T	7	7.57	19.29	30	38.57	19.52	10	65
M1	5	0.72	4.20	8	10	3.54	5	15
M2	1	0.50	2	2	5		5	5
L1	7		0.73	2	27.86	5.67	15	30

Note that not all sites had structural data available.

❑ FLORISTIC SUMMARY

Trees

Eucalyptus dalrympleana, *E. dives*, *E. radiata*, *E. rubida*

Low Trees and Shrubs

Acacia dealbata, *Acacia gunnii*, *Daviesia leptophylla*, *Hibbertia obtusifolia*, *Lomatia myricoides*, *Monotoca scoparia*

Ground Covers

Dianella revoluta, *Dichelachne inaequiglumis*, *Gonocarpus tetragynus*, *Hovea heterophylla* (includes *H. linearis*), *Joycea pallida*, *Lomandra glauca*, *Lomandra longifolia*, *Poa sieberiana*, *Poranthera microphylla*, *Stellaria pungens*

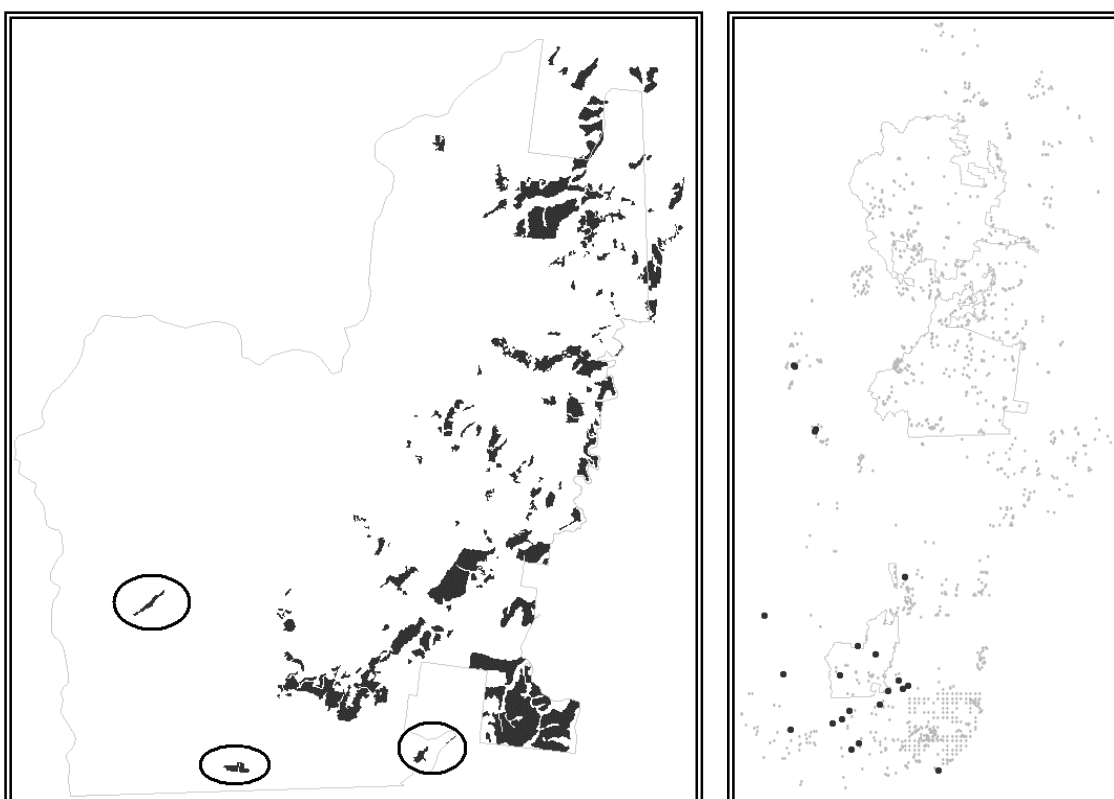
□ KEY IDENTIFYING FEATURES

Easily recognisable features to assist in identifying this map unit are:

- A woodland or forest strongly dominated by broad-leaved peppermint (*E. dives*), with narrow-leaved peppermint (*E. mannifera*) and mountain gum (*E. dalrympleana*) as major components.
- Moderate to light groundcover and sparse shrub layer.
- Found mainly south of Jenolan

□ EXAMPLE LOCATIONS

Found throughout the slopes and ridges of the eastern half of the southern (Tuglow) mapping area.



Location of mapping unit and sites in ALOC group 10 shown with study area boundaries.

□ CONDITION ASSESSMENT

Disturbance Class	Area (ha)	Proportion Extant (%)
A Low	427.11	33.34
B Medium	560.12	43.72
C High	294	22.95
Total	1281.23	100

□ THREATENED PLANT SPECIES

Possible: *Acacia clunies-rossiae*, *Eucalyptus robertsonii* subsp. *hemisphaerica*, *Euphrasia scabra*, *Trachymene scapigera* (syn *T. saniculifolia*)

❑ **DIAGNOSTIC SPECIES**

Species Name	Group Score	Group Freq (%)	Non Group Score	Non Group Freq (%)	Fidelity Class
<i>Acacia lanigera</i>	1	4.55	0	0.01	positive
<i>Cardamine robusta</i>	1	4.55	0	0.01	positive
<i>Daviesia latifolia</i>	2	40.92	2	3.24	positive
<i>Dianella revoluta</i>	2	50.01	2	27.54	positive
<i>Eucalyptus dalrympleana</i>	3	95.46	3	14.26	positive
<i>Eucalyptus dives</i>	3	68.19	3	10.29	positive
<i>Eucalyptus radiata</i>	3	40.92	3	13.37	positive
<i>Gompholobium huegelii</i>	2	36.37	1	3.57	positive
<i>Gonocarpus tetragynus</i>	2	77.28	2	26.97	positive
<i>Grevillea linearifolia</i>	2	4.55	0	0.01	positive
<i>Hibbertia obtusifolia</i>	2	59.1	2	26.81	positive
<i>Joycea pallida</i>	3	36.37	2	13.94	positive
<i>Microlaena stipoides</i> var. <i>stipoides</i>	2	40.92	2	26.57	positive
<i>Monotoca scoparia</i>	2	59.1	2	26.65	positive
<i>Stylidium graminifolium</i>	2	36.37	2	7.29	positive
<i>Thelymitra pulchella</i>	2	4.55	0	0.01	positive
<i>Lomandra filiformis</i>	2	81.83	2	35.39	constant
<i>Poa sieberiana</i>	4	100.01	2	38.88	constant
<i>Lomandra longifolia</i>	3	31.83	2	39.69	negative
<i>Persoonia linearis</i>	1	9.1	2	35.15	negative