

# MU 34 TABLELAND SLOPES BRITTLE GUM – BROAD-LEAVED PEPPERMINT GRASSY FOREST

## □ CORRESPONDING CLASSIFICATIONS

Regional: GW24 Tableland Hills Grassy Woodland

State: Southern Tablelands Dry sclerophyll Forests

Number of Sites: 11

Average number of identified native species per plot: 28.7

## □ DESCRIPTION

This community favours the metamorphic slopes west of Lithgow, and is maybe more typical of the forests further west on the tablelands. The canopy comprises broad-leaved peppermint (*E. dives*) though it is the low, white gnarled limbs of brittle gum (*E. mannifera*) and inland scribbly gum (*E. rossi*) that at first glance appear to dominate, particularly on exposed slopes. On lower slopes occasional stunted Box trees (*E. melliodora* and *E. bridgesiana*) are found amongst the canopy. The substrate is quartzite and argillites of the Devonian metamorphics. These form a stony, loam soil and produce a dry understorey of few shrubs and a patchy clumping of tussock grasses including *Joycea pallida* and *Poa sieberiana*. Species diversity is generally low with the mid-stratum including few species such as *Monotoca scoparia* and *Dillwynia phyllicoides* and the taller *Acacia falciformis*.

It dominates the exposed ridges and slopes of Mount Walker ranging in elevation between 790 metres and 1160 metres above sea level with moderate good mean annual rainfall between 750 millimetres to 970 millimetres. The community matches the Tableland Hills Grassy Woodland of Tindall *et al.* (2004). It falls within the Southern Tableland Grassy Woodlands of Keith (2004). Within the study area, the recent addition of Mount Walker to the reserve system greatly improves the reservation status of the community. However across its range reservation status remains poor and clearing and grazing activities persist in accessible terrain.



## □ STRUCTURAL SUMMARY

Stratum	Count	AvLowHt	AvHt	maxHt	AvCover	SDcover	minCover	maxCover
T	8	6.50	17.63	25	32.50	6.55	20	40
M1	5	1.30	4.70	8	17	12.55	5	30
M2	3	0.50	1.33	1.5	6.67	2.89	5	10
L1	8	0.30	0.56	1.2	38.13	22.51	5	70
L2	1		0.30	0.3	70		70	70

## □ FLORISTIC SUMMARY

### Trees

*Acacia falciformis*, *E. dives*, *E. mannifera*, *E. rossi*, *E. melliodora*, *E. bridgesiana*

### Low Trees and Shrubs

*Dillwynia phyllicoides*, *Hibbertia obtusifolia*, *Leucopogon lanceolatus*, *Lissanthe strigosa*, *Persoonia linearis*

## Ground Covers

*Cheilanthes sieberi*, *Dianella revoluta*, *Entolasia stricta*, *Gonocarpus tetragynus*, *G. teucroides*, *Goodenia hederacea*, *Hydrocotyle laxiflora*, *Joycea pallida*, *Lepidosperma gunnii*, *Lomandra filiformis*, *L. longifolia*, *Opercularia diphylla*, *Oxalis perennans*, *Poa sieberiana*, *Pultenaea microphylla*, *Senecio quadridentatus*, *Stellaria pungens*, *Veronica plebeia*, *Viola betonicifolia*

## Vines & Climbers

*Glycine clandestina*, *Hardenbergia violacea*

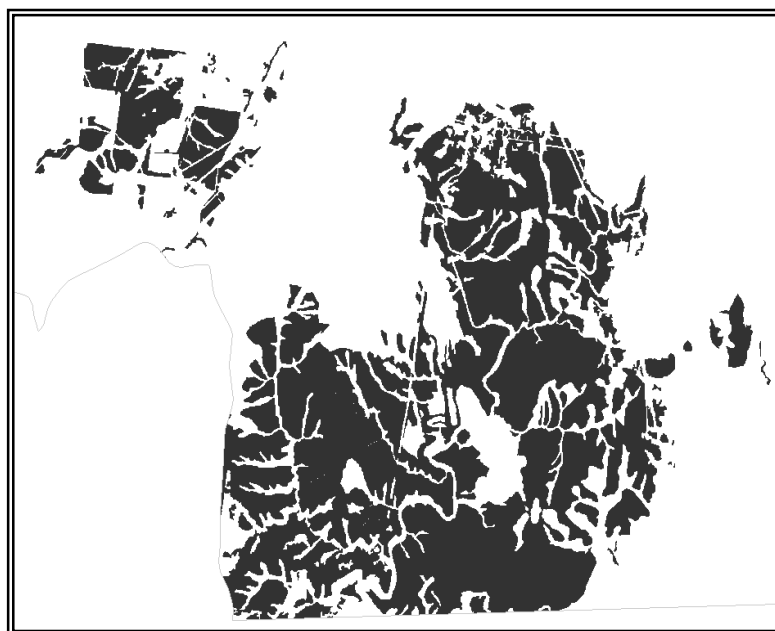
### ❑ KEY IDENTIFYING FEATURES

**Easily recognisable features to assist in identifying this map unit are:**

- Mount Walker area.
- Exposed slopes feature a dry open forest of Brittle Gum and Scribbly Gum with small Broad leaved Peppermints.
- Often has a moderate accumulation of litter, and this may obscure small forbs and herbs that are otherwise quite common and diverse in the community.

### ❑ EXAMPLE LOCATIONS

Mainly found on the metamorphic terrain between Lithgow and Mount Lambie, in particular through Mount Walker to Rydal.



### ❑ CONDITION ASSESSMENT

Disturbance Class	Area (ha)	Proportion Extant (%)
A Low	1161.22	37.74
B Medium	1641.79	53.35
C High	274.10	8.91
<b>Total</b>	<b>3077.11</b>	<b>100</b>

### ❑ THREATENED PLANT SPECIES

Possible: *Derwentia blakelyi*, *Diuris aequalis*, *Eucalyptus robertsonii* subsp. *hemisphaerica*, *Eucalyptus pulverulenta*

□ **DIAGNOSTIC SPECIES**

Species Name	Group Score	Group Freq (%)	Non Group Score	Non Group Freq (%)	Fidelity Class
<i>Bossiaea neo-anglica</i>	2	36.36	2	2.40	positive
<i>Caladenia carnea</i>	2	27.27	0	0.00	positive
<i>Caladenia cucullata</i>	2	9.09	0	0.00	positive
<i>Caladenia gracilis</i>	2	18.18	0	0.00	positive
<i>Cheilanthes sieberi</i>	2	45.45	2	20.47	positive
<i>Dianella revoluta</i>	2	81.82	2	27.45	positive
<i>Dillwynia phyllicoides</i>	2	72.72	2	7.22	positive
<i>Entolasia stricta</i>	2	36.36	2	17.90	positive
<i>Eucalyptus dalrympleana</i>	3	36.36	3	15.49	positive
<i>Eucalyptus dives</i>	3	72.72	3	10.75	positive
<i>Eucalyptus mannifera</i>	3	36.36	3	8.34	positive
<i>Eucalyptus rossii</i>	3	63.64	3	12.83	positive
<i>Galium gaudichaudii</i>	2	36.36	2	8.90	positive
<i>Glycine clandestina</i>	2	36.36	2	20.47	positive
<i>Gonocarpus tetragynus</i>	2	63.64	2	27.53	positive
<i>Goodenia hederacea</i>	2	54.55	2	17.90	positive
<i>Hardenbergia violacea</i>	2	36.36	1	20.30	positive
<i>Helichrysum scorpioides</i>	2	54.55	2	11.64	positive
<i>Hibbertia obtusifolia</i>	2	72.72	2	26.97	positive
<i>Hydrocotyle laxiflora</i>	2	54.55	2	24.00	positive
<i>Indigofera australis</i>	2	36.36	2	15.33	positive
<i>Joycea pallida</i>	3	81.82	2	13.72	positive
<i>Lissanthe strigosa</i>	2	54.55	2	13.56	positive
<i>Oxalis perennans</i>	2	45.45	1	10.27	positive
<i>Persoonia linearis</i>	2	45.45	1	34.59	positive
<i>Poranthera microphylla</i>	2	36.36	1	23.27	positive
<i>Pterostylis cycnocephala</i>	1	9.09	0	0.00	positive
<i>Pultenaea microphylla</i>	2	36.36	2	4.97	positive
<i>Senecio daltonii</i>	2	18.18	0	0.00	positive
<i>Senecio quadridentatus</i>	2	63.64	2	9.39	positive
<i>Stellaria pungens</i>	3	36.36	2	23.03	positive
<i>Veronica plebeia</i>	2	63.64	2	15.73	positive
<i>Viola betonicifolia</i>	2	54.55	2	16.37	positive
<i>Wurmbea dioica</i> subsp. <i>dioica</i>	2	9.09	0	0.00	positive
<i>Lomandra filiformis</i>	2	90.91	2	35.70	constant
<i>Lomandra longifolia</i>	2	36.36	2	39.57	constant
<i>Poa sieberiana</i>	3	81.82	2	39.57	constant