

MU 48 LIMESTONE KARST

□ CORRESPONDING CLASSIFICATIONS

Regional: No matching type in Tindall *et al.* (2004)

State: Not considered a vegetation class

Number of Sites: 2

Average number of identified native species per plot: 39.5

□ DESCRIPTION

A dense thicket and scrub on and around the exposed, angular outcrops of limestone that characterise karst outcrops in the Jenolan and Gurnang areas. The vegetation is patchy on these outcrops but can form a dense scrub of blackthorn (*Bursaria* sp.), *Hymenanchera dentata* and *Notelaea*. Despite the exposed nature of sites and skeletal soils, the limestone retains sufficient moisture to support a lower stratum of nettles and herbs between the rock outcrops. Weeds are often a large proportion of the community, particularly near cave entrances. The main determinant of this



community is the vegetation structure and where a tree layer is present the community grades into Map Unit 23. The community occurs between 750 and 1100 metres above sea level, with annual precipitation in the order of 900 to 1000 millimetres *per annum*.

No similar units have been identified in the study of Tindall *et al.* (2004). Given the limited distribution and landform determination of this unit, it is not identified in Keith (2004), although it might be expected to be part of the Central Gorge Dry Sclerophyll Forests or the South East Dry Sclerophyll Forests.

□ STRUCTURAL SUMMARY

Stratum	Count	AvLowHt	AvHt	maxHt	AvCover	SDcover	MinCover	maxCover
M1	1	1	5	5	70		70	70
L2	1		0.10	0.1	55		55	55
L1	2		0.75	1	25	7.07	20	30

□ FLORISTIC SUMMARY

Trees

Brachychiton populneus, *Eucalyptus bicostata*, *E. viminalis*

Low Trees and Shrubs

Bursaria spinosa, *Hymenanchera dentata*, *Notelaea neglecta*, *Pittosporum multiflorum*, *Senecio linearifolius*, *Urtica incisa*

Ground Covers

Adiantum aethiopicum, *Asperula conferta*, *Austrodanthonia racemosa*, *Carex inversa*, *Desmodium varians*, *Dichondra repens*, *Geranium solanderi*, *Lomandra longifolia*, *Microlaena stipoides*, *Sarga leiocladum*, *Veronica calycina*, *Wahlenbergia luteola*

Vines & Climbers

Clematis glycinoides, *Glycine clandestina*

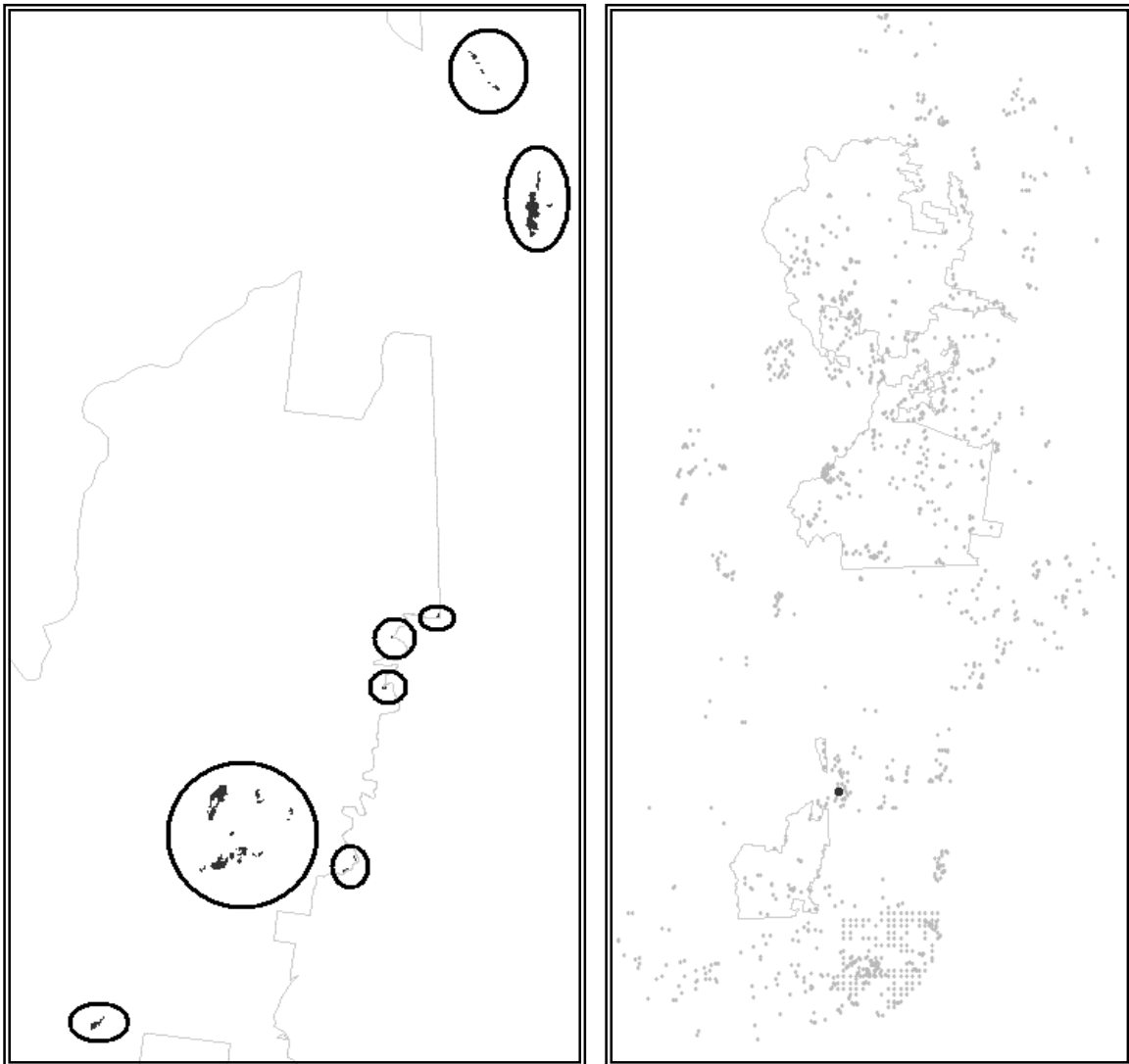
□ **KEY IDENTIFYING FEATURES**

Easily recognisable features to assist in identifying this map unit are:

- Abundance of exposed limestone rock at surface, usually still 'massive' (attached to the main outcrop).
- Dense midstratum of *Bursaria* and *Notelaea*, often with abundant nettles (*Urtica*).
- Reddish, calcareous clay-loam soil.

□ **EXAMPLE LOCATIONS**

Jenolan Caves (Grand Arch in particular), Tuglow River and near Tuglow Caves.



Location of mapping unit and sites in ALOC group 12 shown with study area boundary.

□ **CONDITION ASSESSMENT**

Disturbance Class	Area (ha)	Proportion Extant (%)
A Low	N/A	N/A
B Medium	N/A	N/A
C High	N/A	N/A
Total	N/A	N/A

□ **THREATENED PLANT SPECIES**

None identified.

□ **DIAGNOSTIC SPECIES**

Species Name	Group Score	Group Freq (%)	Non Group Score	Non Group Freq (%)	Fidelity Class
<i>Acacia implexa</i>	3	100.00	1	5.97	positive
<i>Adiantum aethiopicum</i>	3	100.00	2	8.43	positive
<i>Asperula conferta</i>	2	100.00	2	8.04	positive
<i>Asplenium trichomanes</i>	2	100.00	1	0.07	positive
<i>Austrodanthonia racemosa</i> var. <i>racemosa</i>	3	100.00	2	9.71	positive
<i>Austrostipa nodosa</i>	3	100.00	2	0.15	positive
<i>Brachychiton populneus</i>	2	100.00	1	6.92	positive
<i>Bulbine glauca</i>	2	100.00	0	0.00	positive
<i>Bursaria spinosa</i>	3	100.00	2	18.31	positive
<i>Carex inversa</i>	2	100.00	2	4.37	positive
<i>Clematis glycinoides</i>	2	100.00	2	30.65	positive
<i>Desmodium varians</i>	2	100.00	2	19.27	positive
<i>Dichondra repens</i>	2	100.00	2	24.28	positive
<i>Dodonaea viscosa</i>	4	100.00	2	4.45	positive
<i>Elymus scaber</i>	3	100.00	2	5.81	positive
<i>Galium propinquum</i>	2	100.00	2	11.15	positive
<i>Geitonoplesium cymosum</i>	2	100.00	2	13.38	positive
<i>Geranium solanderi</i>	2	100.00	2	13.93	positive
<i>Hardenbergia violacea</i>	2	100.00	1	20.38	positive
<i>Marsdenia rostrata</i>	2	100.00	2	1.19	positive
<i>Microlaena stipoides</i> var. <i>stipoides</i>	3	100.00	2	26.75	positive
<i>Myoporum montanum</i>	3	100.00	1	1.91	positive
<i>Notelaea neglecta</i>	2	100.00	2	1.91	positive
<i>Pellaea falcata</i>	2	100.00	2	8.20	positive
<i>Pittosporum multiflorum</i>	2	100.00	2	5.97	positive
<i>Pterostylis curta</i>	2	100.00	2	0.95	positive
<i>Sarga leiocladum</i>	3	100.00	1	1.19	positive
<i>Senecio lautus</i>	3	100.00	2	5.89	positive
<i>Senecio linearifolius</i>	2	100.00	2	7.40	positive
<i>Senecio macranthus</i>	2	100.00	2	1.19	positive
<i>Stellaria pungens</i>	3	100.00	2	23.09	positive
<i>Urtica incisa</i>	2	100.00	2	7.96	positive
<i>Wahlenbergia luteola</i>	2	100.00	2	1.91	positive
<i>Lomandra longifolia</i>	2	100.00	2	39.48	constant
<i>Poa sieberiana</i>	4	100.00	2	39.88	constant
<i>Lomandra filiformis</i>	0	0.00	2	36.23	negative