



Conservation Programs & Planning Division
Correll Directorate
NSW National Parks and Wildlife Service
October 2002

Native Vegetation of the Cumberland Plain

Map 15 of 16
Hawkesbury LGA (Western Section)

Please view map in conjunction with report
"Interpretation Guidelines for the Native
Vegetation of the Cumberland Plain,
Western Sydney
NSW NPWS, Hurstville, October 2002"

Vegetation data compiled by the Conservation Assessment and
Monitoring Unit of the NSW National Parks and Wildlife Service
in collaboration with the Department of Environment and Heritage
and the Department of Planning and Infrastructure. Data sources
include: Department of Environment and Heritage, 2001
Vegetation Inventory of the Cumberland Plain, Western Sydney
Project jointly approved by NPWS, Landcare, OWS & OUPP

Legend

- Study Area Boundary
- Local Government Area Boundary
- NPWS Estate boundary

Endangered ecological communities listed under the Threatened Species Conservation Act 1995 as of 1 June 2002

- 1 - Sandstone Transition Forest (Low Sandstone Influence)
- 2 - Sandstone Transition Forest (High Sandstone Influence)
- 3 - Coxs River/Castlemagh Ironbark Forest
- 4 - Castlemagh Swamp Woodland
- 5 - Agnes Banks Woodland
- 6 - Agnes Banks Woodland
- 7 - Cumberland Plain Woodland
- 8 - Shale Hills Woodland
- 9 - Shale Hills Woodland
- 10 - Shale Plains Woodland
- 11 - Sydney Coastal River Flat Forest
- 12 - Riparian Forest
- 13 - Western Sydney Dry Rainforest
- 14 - Moist Shale Woodland
- 15 - Sydney Turpentine-ironbark Forest
- 16 - Turpentine-ironbark Forest
- 17 - Turpentine-ironbark Forest
- 18 - Elderslie Banksia Scrub Forest
- 19 - Shale Gravel Transition Forest
- 20 - Shale Gravel Transition Forest
- 21 - Blue Gum High Forest
- 22 - Blue Gum High Forest

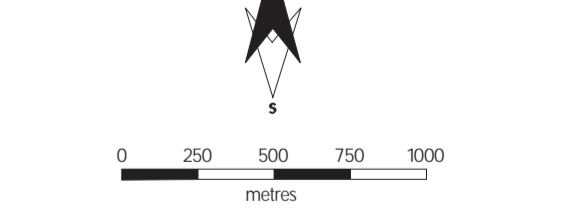
Ecological communities not listed under the Threatened Species Conservation Act 1995 as of 1 June 2002

- 23 - Sandstone Ridge-top Woodland
- 24 - Upper Georges River Sandstone Woodland
- 25 - Western Sandstone Gully Forest
- 26 - Mangrove/Saltmarsh Complex
- 27 - Riparian Scrub
- 28 - Freshwater Wetlands
- 29 - Eastern Gully Forest
- 30 - Woodland Heath Complex
- 31 - Vegetation Of Volcanic Substrates
- 32 - Unclassified vegetation, or outside study area
- 33 - Non-vegetation area
- 34 - Water body

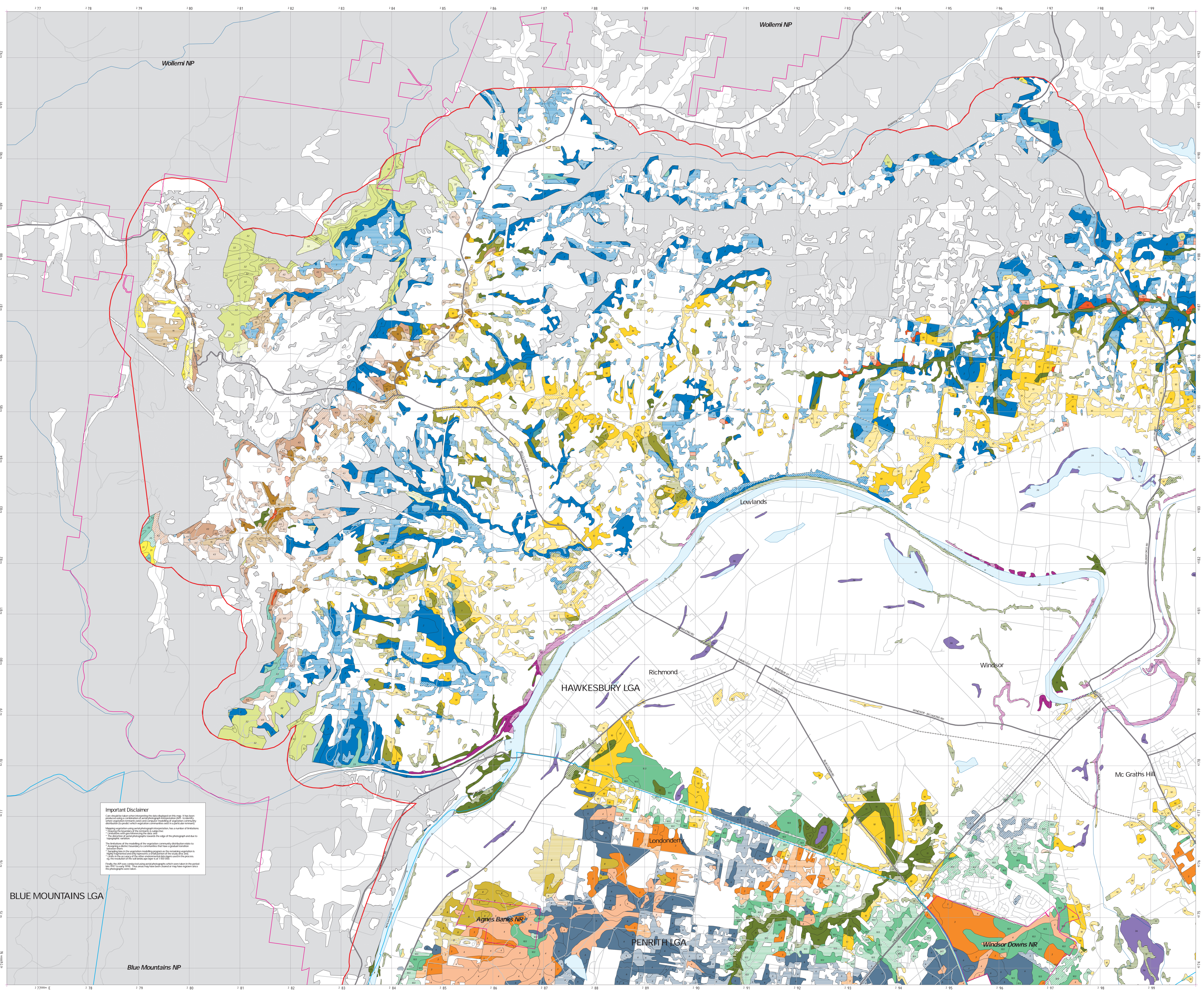
Vegetation Condition Classes

- Canopy Cover > 90% (Basis Remnant > 5ha, Where Canopy Cover > 5%, Area Remnant > 0.5ha)
- Canopy Cover > 90% (Area Remnant > 0.5ha, Where Canopy Cover > 5%, Area Remnant > 0.5ha)
- Canopy Cover > 90% (Basis Area) (Area Remnant > 0.5ha)

Note: Condition classes are shown as a shading over the ecological community code.



Study Area



Important Disclaimer

This map is a representation of the vegetation data available at the time of publication. It is not a guarantee of accuracy and should not be used for legal purposes. The map is based on the best available data and is subject to change. The map is not a substitute for a field visit and should be used in conjunction with other information. The map is not a guarantee of accuracy and should not be used for legal purposes. The map is based on the best available data and is subject to change. The map is not a substitute for a field visit and should be used in conjunction with other information.

Native Vegetation of the Cumberland Plain, Western Sydney

Native Vegetation of the Cumberland Plain, Western Sydney