

# Supplementary Information for:

## Montane Peatlands & Swamps

of the New England Tableland, NSW North Coast, Sydney Basin, South East Corner, South Eastern Highlands & Australian Alps

### EECs that are similar to Montane Peatlands and Swamps

There are a number of swamps listed as endangered in NSW and nationally. Often these swamps will have a similar structure of sedges or shrubs, and are only distinguished by the plant species present and the soil types on which they occur.

#### 1. Upland Wetlands of the Drainage Divide of the New England Tableland bioregion (E): this

community has fewer woody plants, a greater component of aquatic herbs, and is found on soils with less peat and higher mineral content. It has shallow temporary to near-permanent standing water, compared to varying depth of seeping water of Montane Peatlands and Swamps.



Lucas McKinnon

Newnes Plateau Shrub Swamp. Recovering from a fire two years previous, the shrub layer in this swamp is quite low.



Ian Baird

"A Boyd Plateau Bog" in the Kanangra-Boyd National Park in the Blue Mountains. Part of the Montane Peatlands & Swamps EEC.



Shane Ruming

Upland Swamps of the New England Drainage Divide. This community is characterised by near-permanent standing water and lack of woody plant species.

#### 2. Newnes Plateau Shrub Swamps

(E): restricted to the Newnes Plateau and some adjoining areas of the Blue Mountains >1000m. A closed heath or shrubland community (which varies with fire history) may dominate, but localised patches of closed to open sedgeland including herbs and sparse shrubs may also be interspersed. It is found on poorly drained, acid, sandy peat soils.



Natural Heritage Trust

Helping Communities Helping Australia

A Commonwealth Government Initiative

Department of Environment & Climate Change NSW



Identification Guidelines for Endangered Ecological Communities  
Supplementary Information

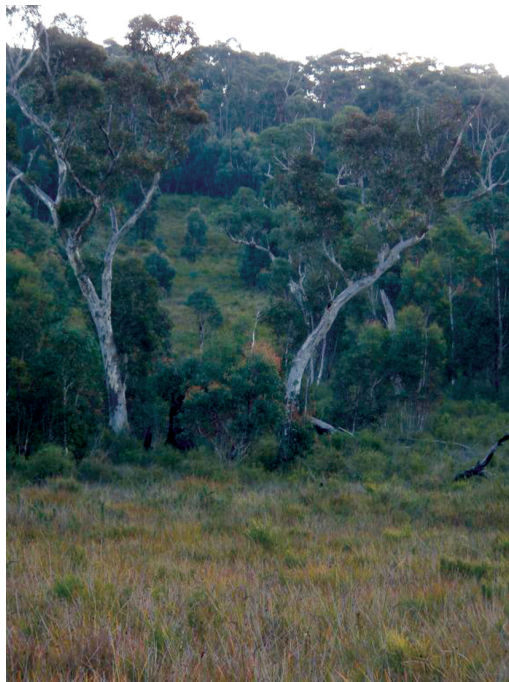


**3. Blue Mountains Swamps (V):** restricted to the Blue Mountains area from 500m to ~1000m where it intergrades into *Newnes Plateau Shrub Swamps* between Bell and Clarence. This community has a higher diversity of sclerophyllous shrub species, a lower diversity of soft-leaved sedges, grasses and herbs than *Montane Peatlands and Swamps*, and typically occurs on low fertile sandstone soils. Some areas are dominated by closed to open sedgeland with a more open or scattered shrubland or heathland overstorey.



Lucas McKinnon

*Temperate Highland Peat Swamp on Sandstone. Wingecarribee Swamp near Bowral is recognised as an Endangered Ecological Community under State and commonwealth legislation.*



Lucas McKinnon

*Blue Mountains Sedge Swamp. Sometime referred to as Hanging Swamps, these swamps are often situated on hill sides.*

**4. Temperate Highland Peat Swamps on Sandstone (E – EPBC):** There is some overlap between this community and *Montane Peatlands and Swamps* as they have been defined differently under different legislation. The Commonwealth EPBC Act listing is distinguished by its restriction to sandstone derived soils and as such includes various upland swamp types such as *Newnes Plateau Shrub Swamps* and *Blue Mountains Swamps*. Comparatively, *Montane Peatlands and Swamps* can be found on soils derived from basalt, granite, sedimentary or metamorphic substrates and are more readily recognised by their *Sphagnum* moss component (amongst other key indicators outlined in this guideline). The *Temperate Highland Peat Swamps on Sandstone* is also more restricted in its geographical and altitudinal range, being confined to the South Eastern Highlands and the Sydney Basin bioregions and elevations generally between 650 to 1200m. Wingecarribee Swamp is an example of a swamp covered by both listings. For more information on this community see the Commonwealths listing advice for this community:

[environment.gov.au/cgi-bin/sprat/public/publiclookupcommunities.pl](http://environment.gov.au/cgi-bin/sprat/public/publiclookupcommunities.pl)

(E) = Endangered & (V) = Vulnerable in NSW under the *Threatened Species Conservation Act 1995*.

(E – EPBC) = Endangered nationally under the *Commonwealth Environment Protection and Biodiversity Conservation Act 1999*.

**Disclaimer:** The Department of Environment and Climate Change has prepared this document as a guide only. The information provided is not intended to be exhaustive. It does not constitute legal advice. Users of this guide should do so at their own risk and should seek their own legal and other expert advice in identifying endangered ecological communities. The Department of Environment and Climate Change accepts no responsibility for errors or omissions in this guide or for any loss or damage arising from its use.