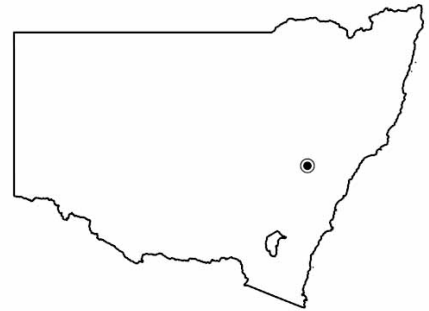




# Mugii Murum-ban State Conservation Area

## Statement of management intent

## Acknowledgement of Country



The NSW National Parks and Wildlife Service (NPWS) acknowledges that Mugii Murum-ban State Conservation Area ('the park') lies within Wiradjuri Country and has historical and ongoing cultural significance for Aboriginal people.

## Introduction

Mugii Murum-ban State Conservation Area (3,924 hectares) is located 40 kilometres north of Lithgow and 3 kilometres north-east of Capertee (see Figure 1) and was reserved on 4 March 2011.

This statement of management intent outlines the main values, issues, management directions for management of Mugii Murum-ban State Conservation Area (SCA). This statement, together with relevant NPWS policies, will guide the management of the SCA until a plan of management has been adopted.

## Management principles

Under Section 30G of the National Parks and Wildlife Act, state conservation areas are reserved to identify, protect and conserve areas containing significant or representative ecosystems, natural or cultural features, or landscapes or phenomena that provide opportunities for public appreciation and inspiration and sustainable visitor or tourist use and enjoyment.

Management of the SCA will be consistent with the following principles:

- conserve biodiversity, maintain ecosystem functions, protect natural phenomena and maintain natural landscapes
- conserve places, objects and features of cultural value
- provide for the undertaking of uses permitted under other provisions of the NPW Act (including uses permitted under section 47J such as mineral exploration and mining),

having regard to the conservation of the natural and cultural values of the state conservation area

- provide for sustainable visitor or tourist use and enjoyment that is compatible with conservation of the area's natural and cultural values and with uses permitted in the area
- provide for sustainable use (including adaptive reuse) of any buildings or structures or modified natural areas having regard to conservation of the area's natural and cultural values and with other uses permitted in the area
- provide for appropriate research and monitoring.

Land is primarily reserved as a state conservation area where mineral values preclude reservation as another category. The NPW Act requires a review of the classification of state conservation areas every 5 years in consultation with the Minister administering the *Mining Act 1992*.

## Context

Mugii Murum-ban SCA lies within the South Eastern Highlands Bioregion. It also falls within the administrative areas of Lithgow City Council, Bathurst Local Aboriginal Land Council and Central Tablelands Local Land Services.

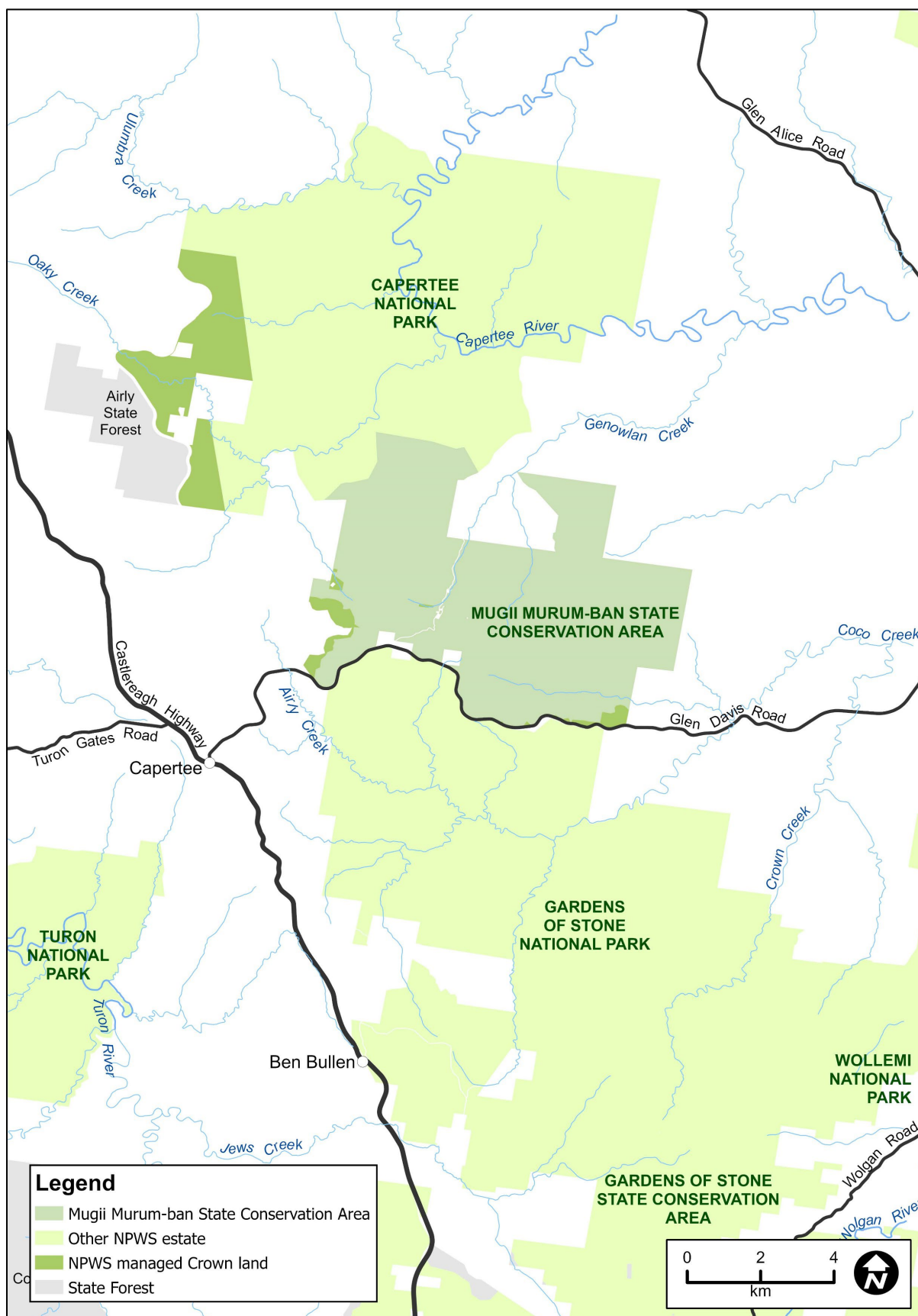
The SCA is part of a large and relatively contiguous system of protected bushland, stretching from the Hunter Valley in the north to the Wollondilly River in the south, and including the nearby Capertee, Gardens of Stone and Wollemi national parks.

Mugii Murum-ban SCA is dominated by 2 prominent mesas which are major visual features of the Capertee Valley.

The park contains a great diversity of ecosystems, supporting several threatened plants and animals and 2 threatened ecological communities.

The area is particularly significant to the Wiradjuri Aboriginal people and also contains numerous significant historic heritage sites.

The park is recognised as having significant deposits of coal under the surface.



**Figure 1** Mugii Murum-ban State Conservation Area

# Values

- Mugii Murum-ban SCA contains a number of significant geological features, including prominent mesas, extensive and intricate pagoda clusters, numerous deep gorges, canyons and unusual rock formations. These features combine to create a visual landscape of high scenic value.
- The SCA contains a number of threatened plants and vegetation communities that are currently under-represented within the NSW park system, including *Pultenaea praecipua* subsp. *praecipua*, which is known only from a single small population on the tip of Genowlan Point, and the endangered ecological community Genowlan Point *Allocasuarina nana* Heathland. Other threatened plant species recorded in the SCA include *Grevillea obtusiflora*, Mount Vincent mint-bush (*Prostanthera stricta*) and Capertee stringybark (*Eucalyptus cannoni*). The SCA also contains areas of the endangered ecological community White Box Yellow Box Blakely's Red Gum Woodland.
- The SCA contains several threatened animal species, including the glossy black-cockatoo (*Calyptorhynchus lathami*).
- The SCA lies within the traditional lands of the Wiradjuri Aboriginal people and has important cultural value.
- Ruins from past oil shale mining are located within the SCA, including evidence of roads, cableways, tunnels, railway lines, buildings, steam winches, ventilation chimneys and caves used as houses, as well as evidence of past diamond mining.
- The SCA provides opportunities for self-reliant recreation, including four-wheel driving, nature study, camping, mountain biking, bushwalking and birdwatching.

# Issues

- Significant geological features of the park (notably pagodas) are susceptible to physical damage from a range of human activities.
- Past and future mining activities in the park have the potential to affect park values.
- Soils in the park are mainly shallow sandy loams and are highly erodible. Management trails within the park are particularly susceptible to erosion following rain.
- Vehicle use of access and management trails (and maintenance of these trails) has the potential to impact threatened plant species and communities. Vehicle use of trails is also a potential threat to Aboriginal heritage sites.

# Key management directions

- Fire is managed in accordance with the Mugii Murum-ban State Conservation Area Fire Management Strategy.
- Pest management programs will be implemented in accordance with the NPWS Regional Pest Management Strategy: Blue Mountains. Current priorities for the SCA include the control of feral goats.
- Vehicle access arrangements will be reviewed during the development of the plan of management for Mugii Murum-ban SCA. Community consultation will be undertaken throughout this process.

- All management activities will be preceded by the preparation of an environmental assessment or heritage assessment where this is a requirement of NPWS policy or legislation.
- Environmental repair and threat management programs, such as erosion mitigation measures, pest management, and activities arising from threatened species requirements may be implemented in accordance with NPWS policies and procedures.
- Non-intrusive works may be undertaken where necessary to protect cultural heritage items from further deterioration, to ensure the safety of visitors, to protect wildlife or to prevent damage to park assets.
- Applications for mining or mineral exploration within the SCA will be subject to environmental impact assessment and approvals.
- NPWS will also encourage the community to contribute to the ongoing conservation of the SCA by promoting and raising public awareness of its special values.

## More information

For additional information or enquiries about any aspect of this park or this statement, contact the NPWS Mudgee Area Office on (02) 6370 9000 or 27 Inglis St, Mudgee NSW 2850 or at [npws.mudgee@environment.nsw.gov.au](mailto:npws.mudgee@environment.nsw.gov.au)

The following links also provide more information:

- [Managing parks prior to plan of management policy](#)
- [Fire management strategies](#)
- [National Parks and Wildlife Act \(No 80\) 1974](#)
- [Biodiversity Conservation Act \(No 63\) 2016](#)
- [Environment Protection and Biodiversity Conservation Act 1999](#)
- [Local Land Services regional pest animal plans](#)
- [Local Land Services regional weed plans](#)

Disclaimer: This is a statement of management intent to guide the management of the park prior to the development of a plan of management. Any statements made in this publication are made in good faith and do not render the Department of Climate Change, Energy, the Environment and Water liable for any loss or damage. Provisions in the final plan of management may vary from those identified in this document as a result of new information and community consultation. The map in this statement is intended to show the park's location and basic features only and is not suitable for use when navigating to or exploring within the park.

Environment and Heritage.

Department of Climate Change, Energy, the Environment and Water  
Locked Bag 5022, Parramatta NSW 2124; Phone: 1300 361 967

Email: [info@environment.nsw.gov.au](mailto:info@environment.nsw.gov.au); [www.environment.nsw.gov.au](http://www.environment.nsw.gov.au)

ISBN 978-1-923436-86-2; EH 2025/0183; June 2025

