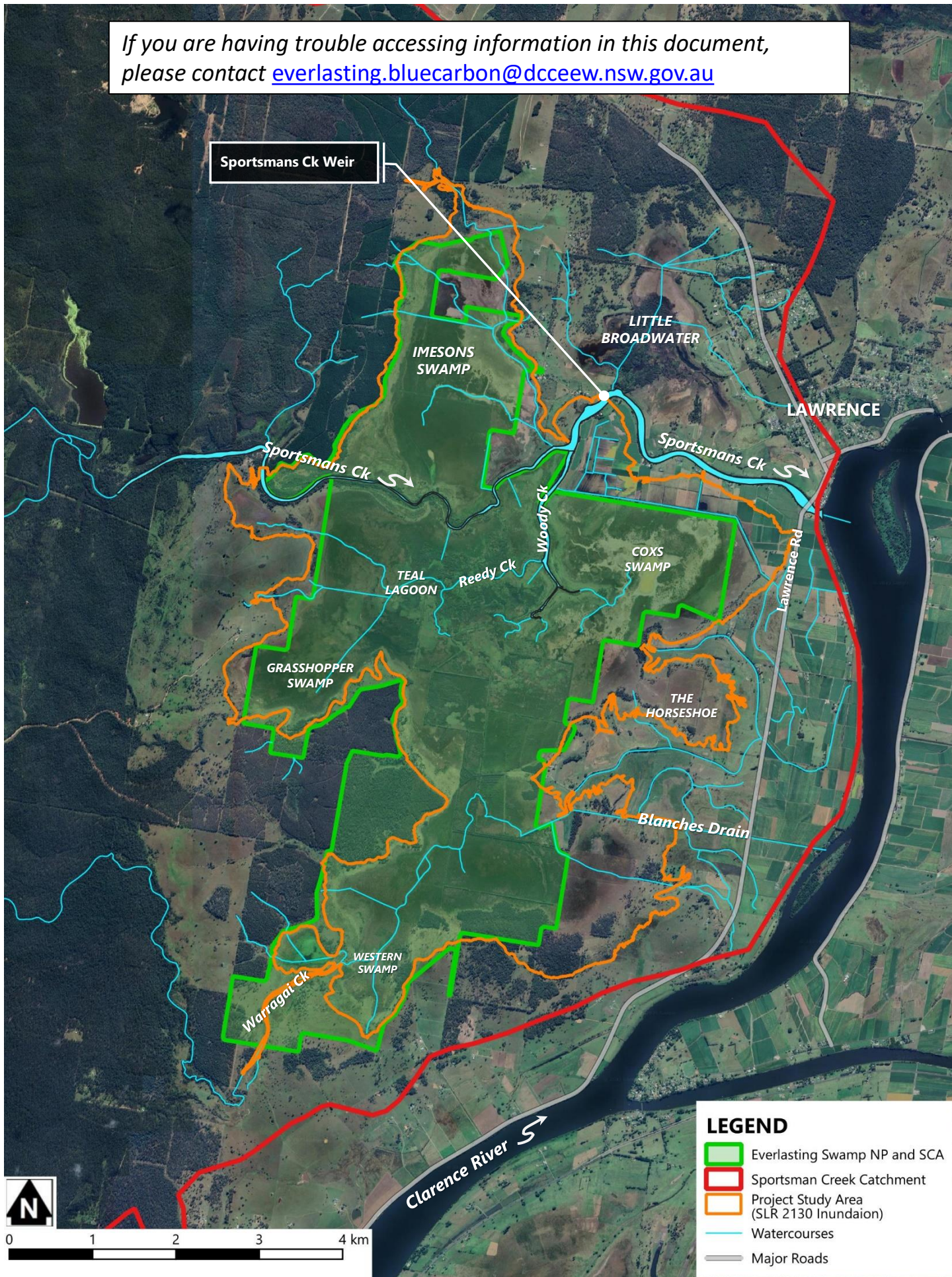


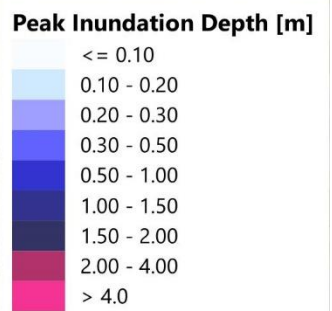
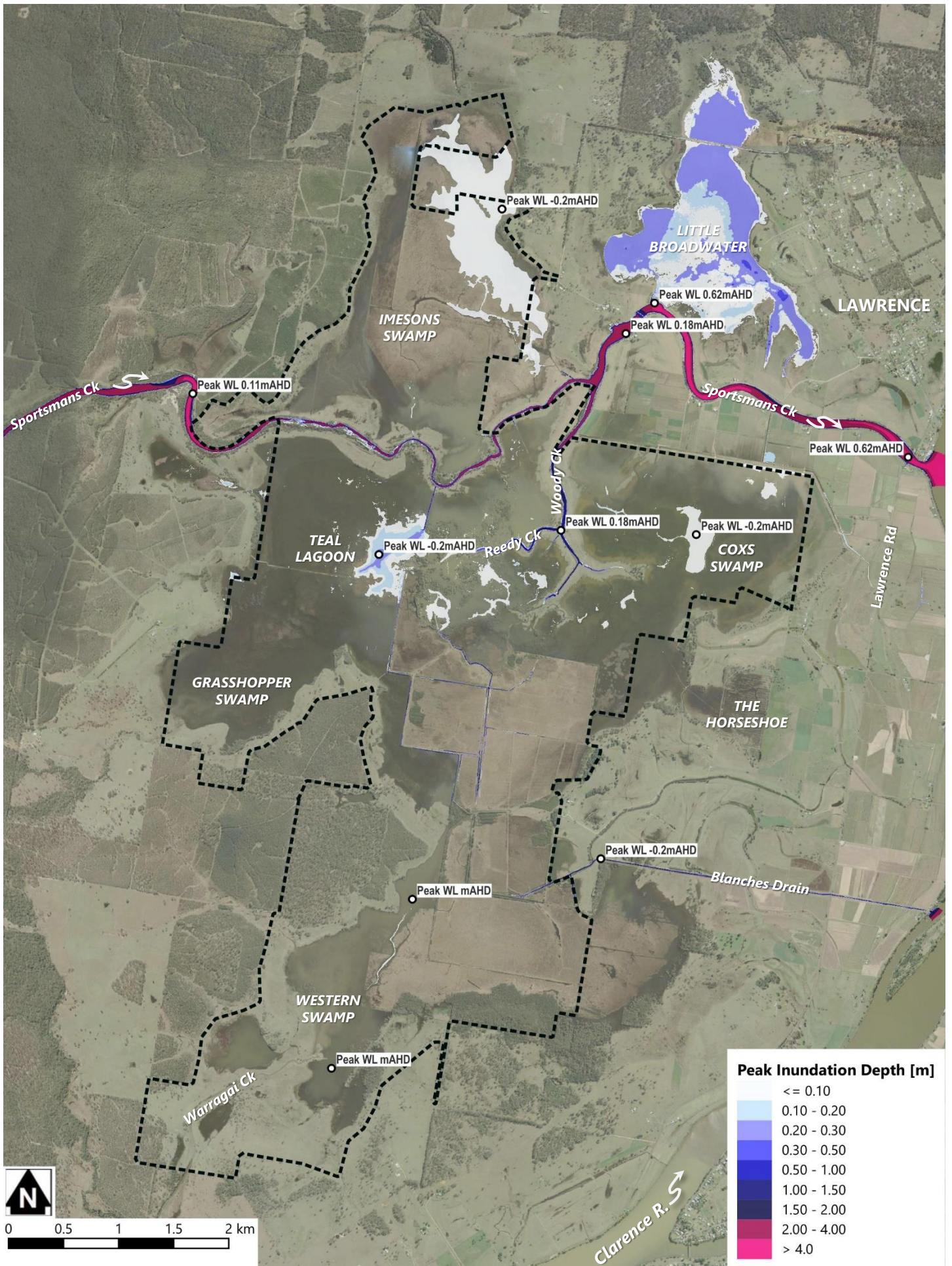
If you are having trouble accessing information in this document, please contact everlasting.bluecarbon@dcceew.nsw.gov.au



Prepared by:



Everlasting Swamp Study Area



Prepared by:



Baseline Inundation Peak Depths and Levels 2025 Tidal Conditions

Figure 1

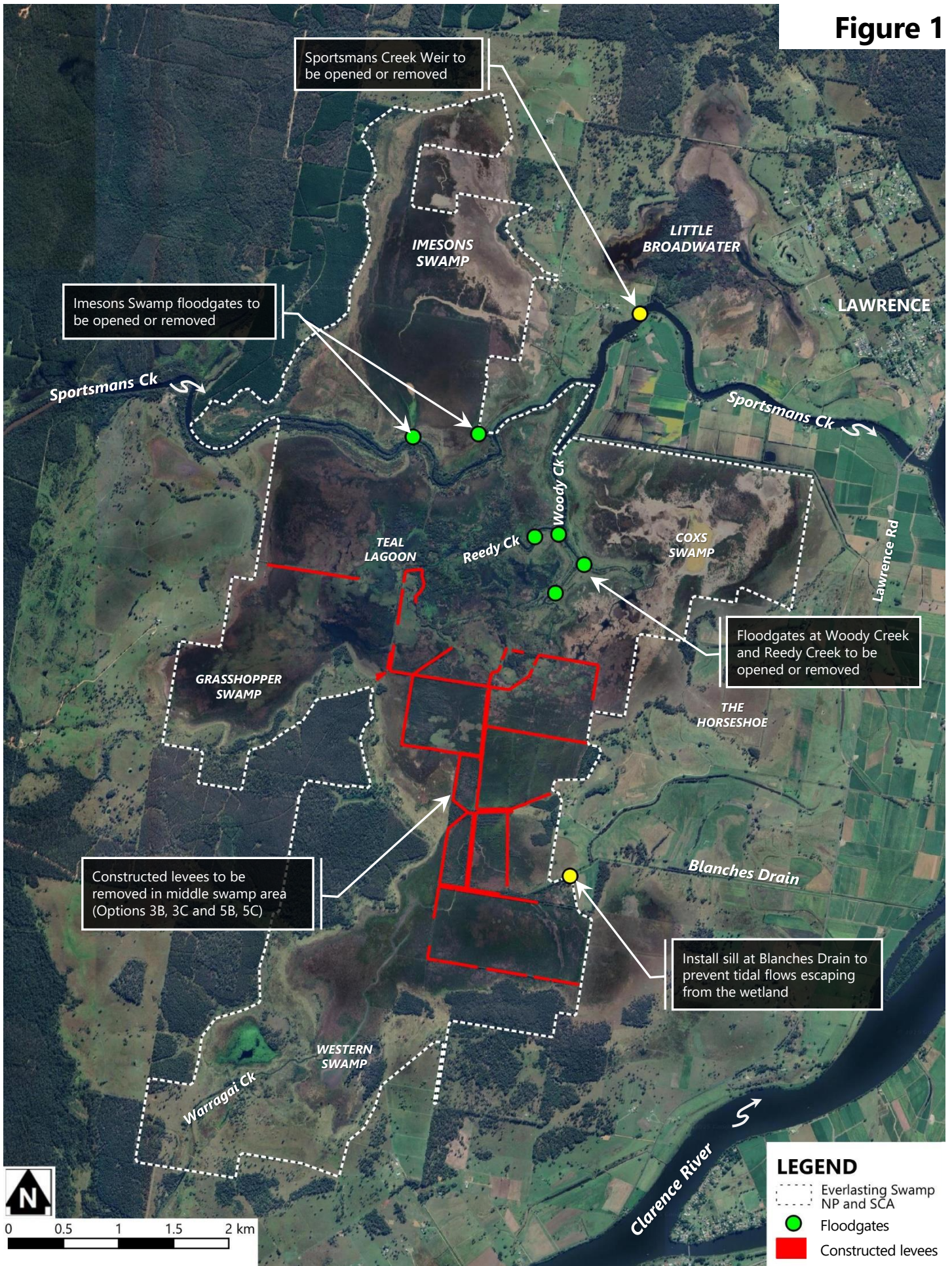
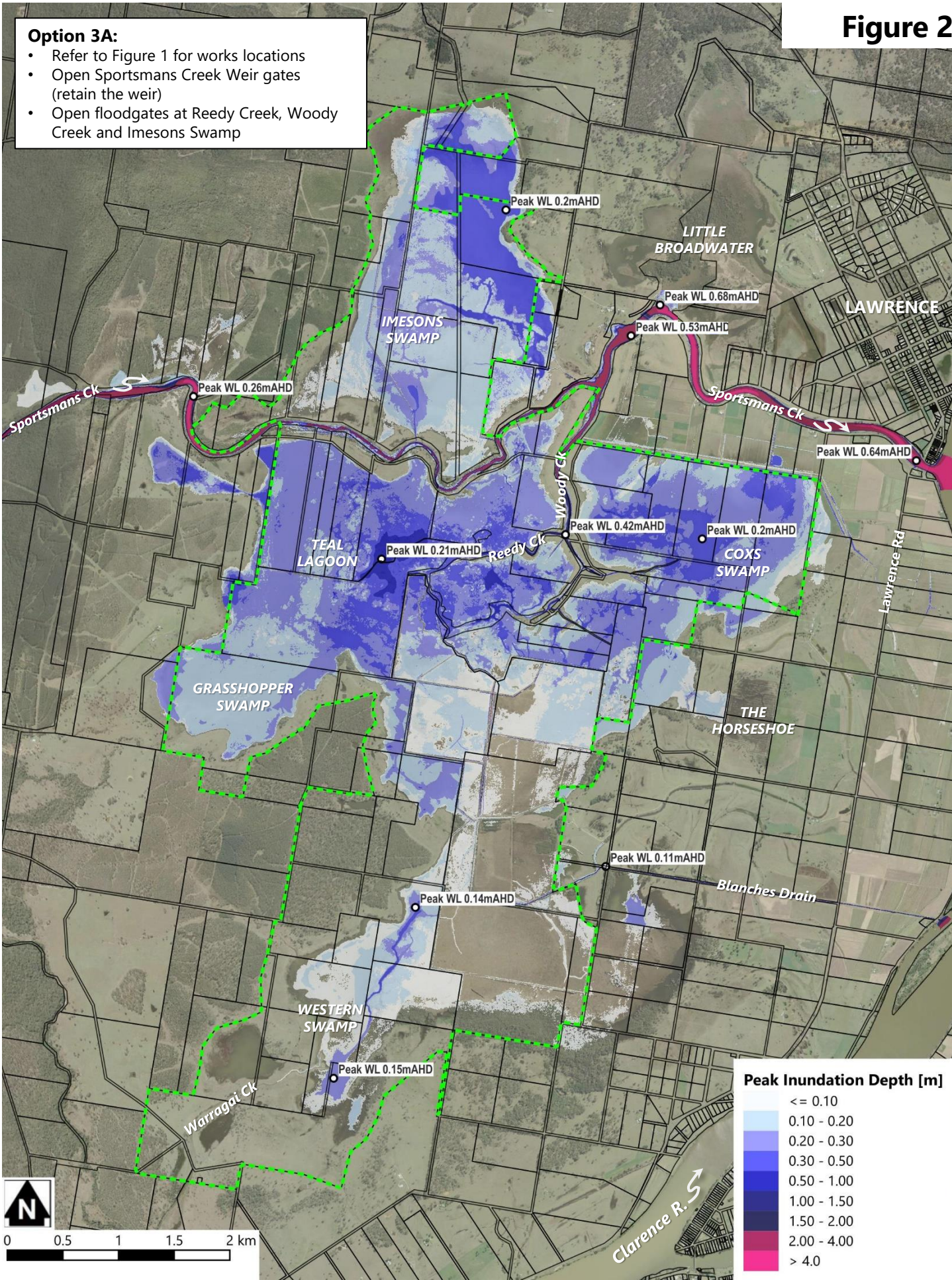


Figure 2

Option 3A:

- Refer to Figure 1 for works locations
- Open Sportsmans Creek Weir gates (retain the weir)
- Open floodgates at Reedy Creek, Woody Creek and Imesons Swamp



Prepared by:

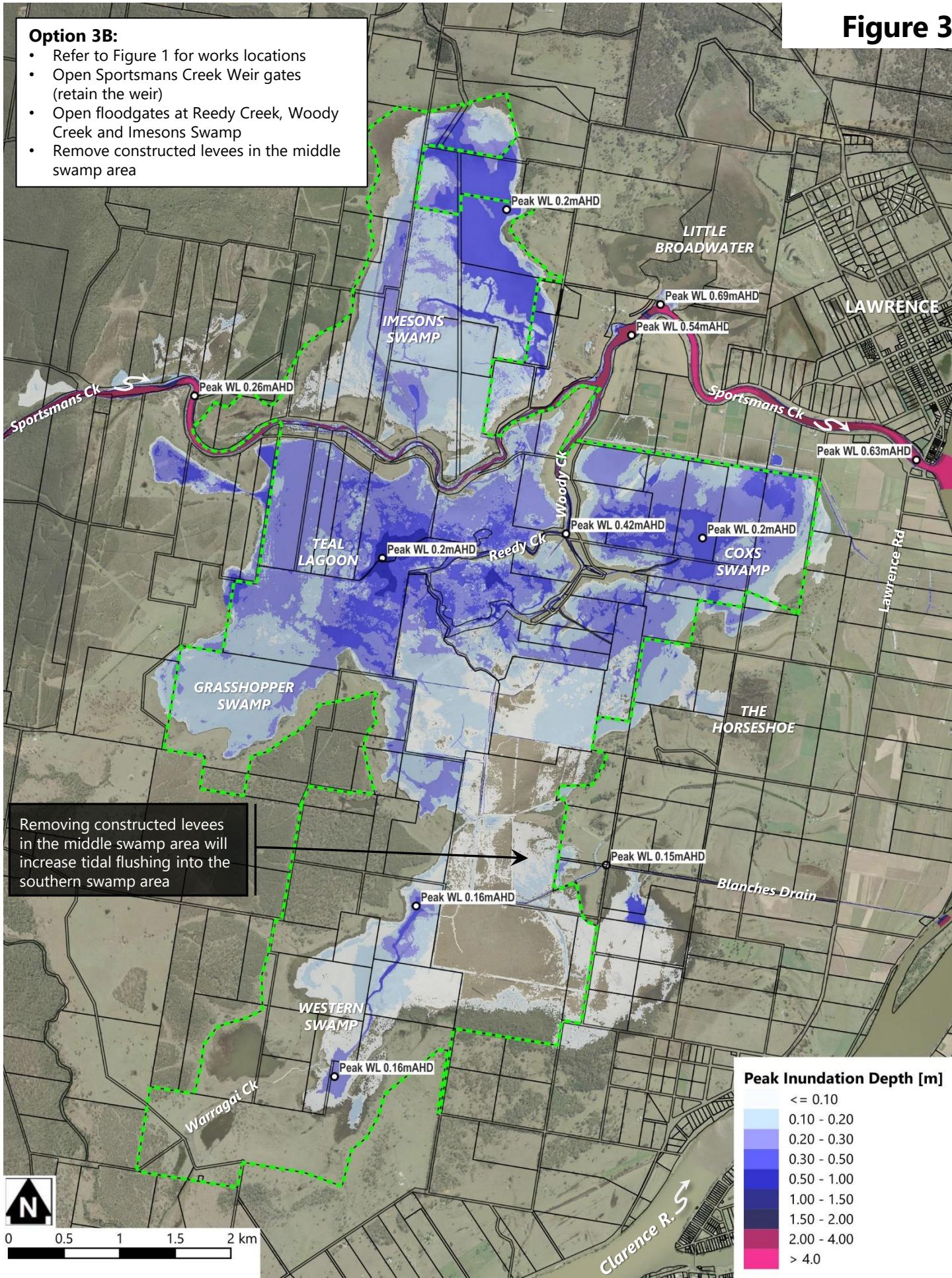


Option 3A
Peak Inundation Depths and Levels
2025 Tidal Conditions

Figure 3

Option 3B:

- Refer to Figure 1 for works locations
- Open Sportsmans Creek Weir gates (retain the weir)
- Open floodgates at Reedy Creek, Woody Creek and Imesons Swamp
- Remove constructed levees in the middle swamp area



Prepared by:

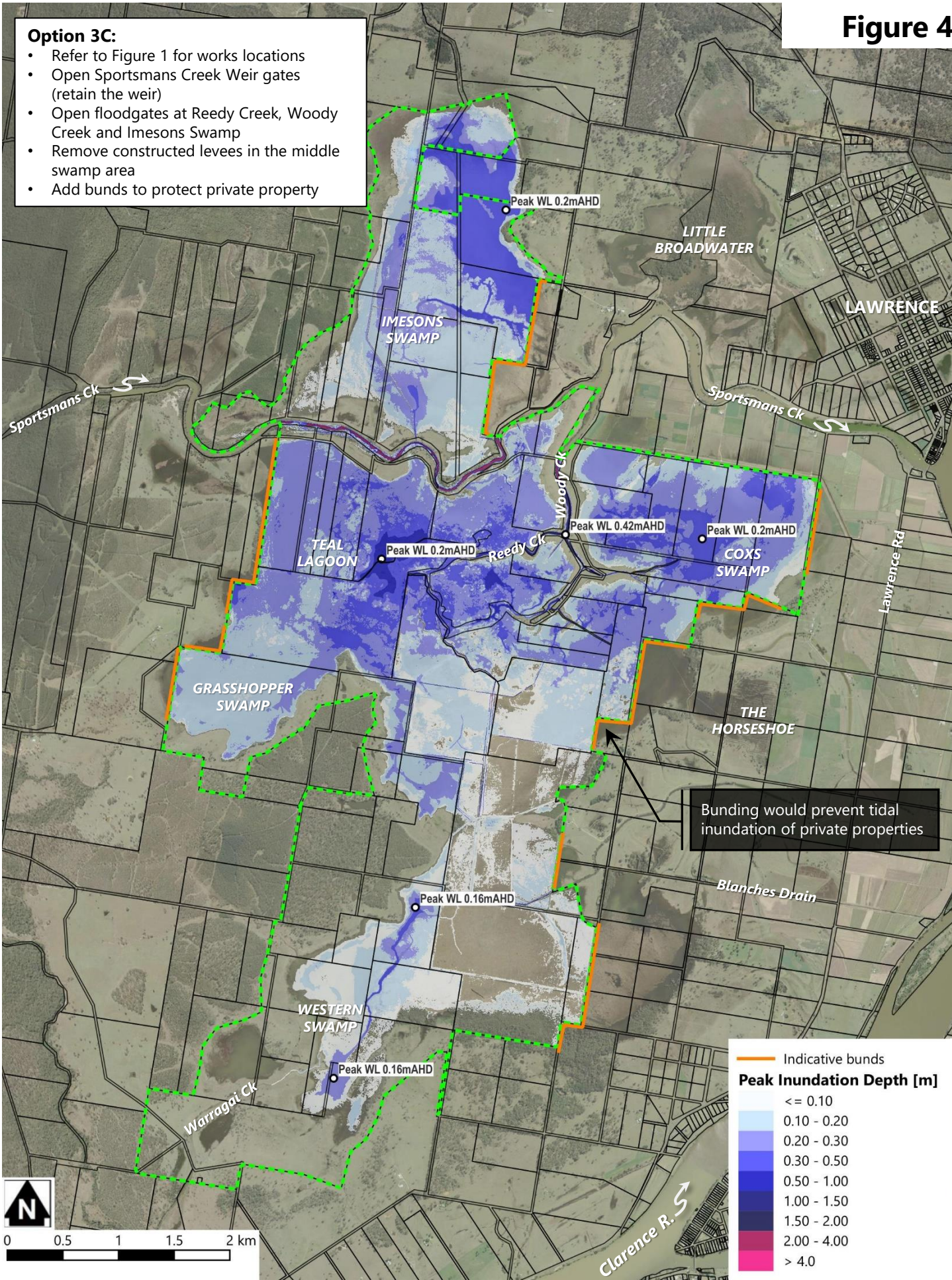


**Option 3B
Peak Inundation Depths and Levels
2025 Tidal Conditions**

Figure 4

Option 3C:

- Refer to Figure 1 for works locations
- Open Sportsmans Creek Weir gates (retain the weir)
- Open floodgates at Reedy Creek, Woody Creek and Imesons Swamp
- Remove constructed levees in the middle swamp area
- Add bunds to protect private property



Bunding would prevent tidal inundation of private properties



Prepared by:

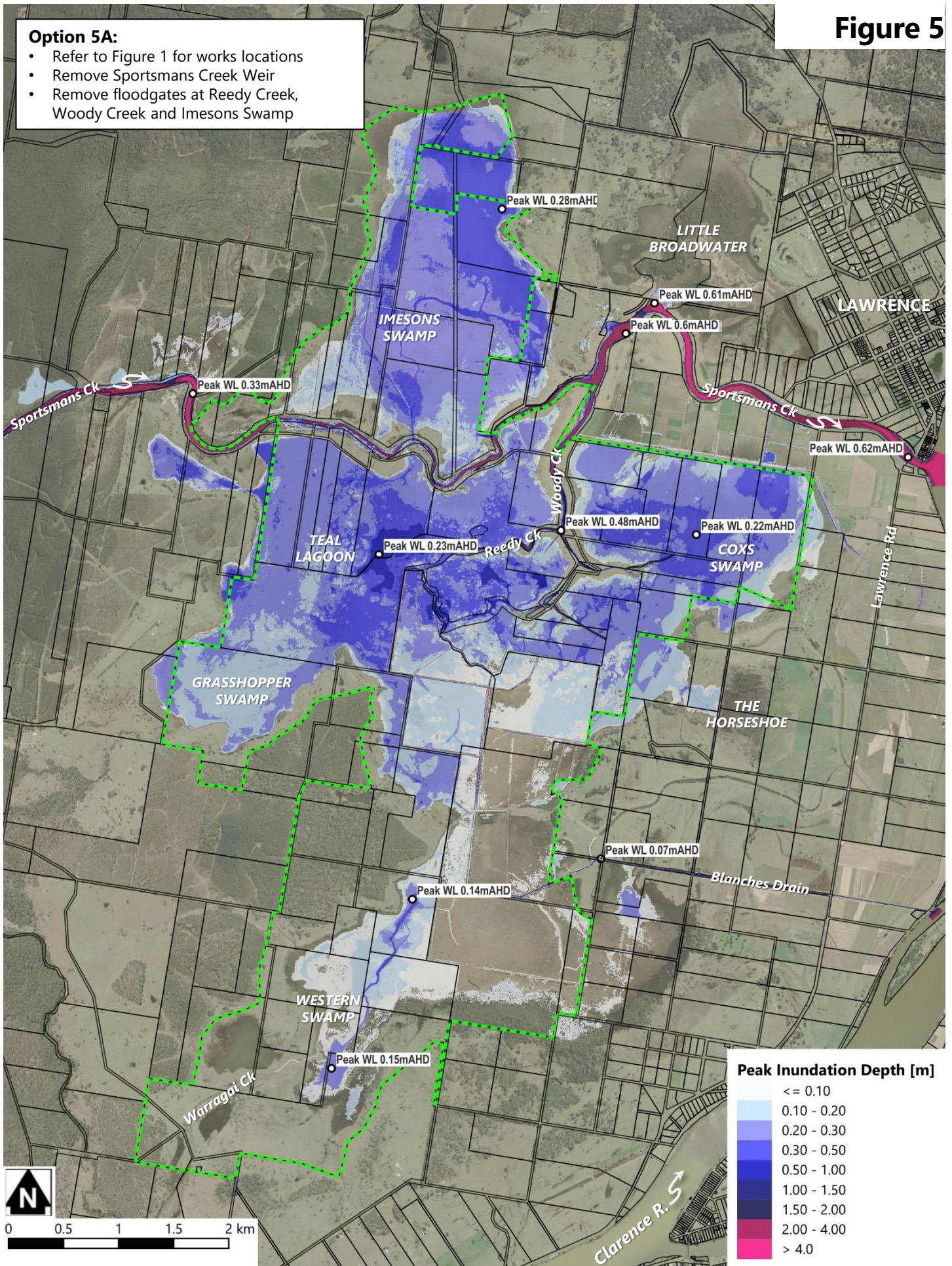


Option 3C
Peak Inundation Depths and Levels
2025 Tidal Conditions

Figure 5

Option 5A:

- Refer to Figure 1 for works locations
- Remove Sportsmans Creek Weir
- Remove floodgates at Reedy Creek, Woody Creek and Imesons Swamp



Prepared by:

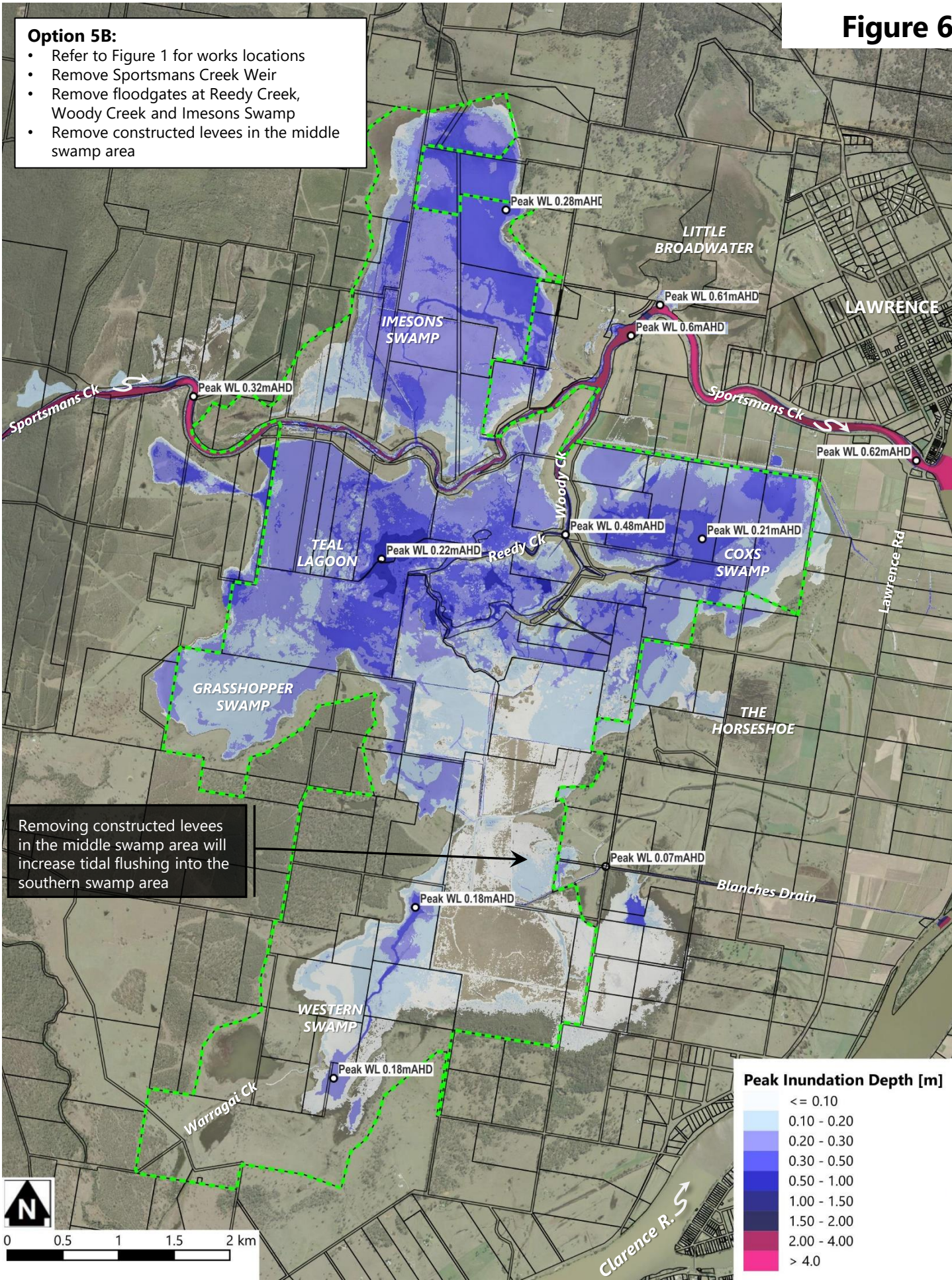


Option 5A
Peak Inundation Depths and Levels
2025 Tidal Conditions

Figure 6

Option 5B:

- Refer to Figure 1 for works locations
- Remove Sportsmans Creek Weir
- Remove floodgates at Reedy Creek, Woody Creek and Imesons Swamp
- Remove constructed levees in the middle swamp area



Prepared by:

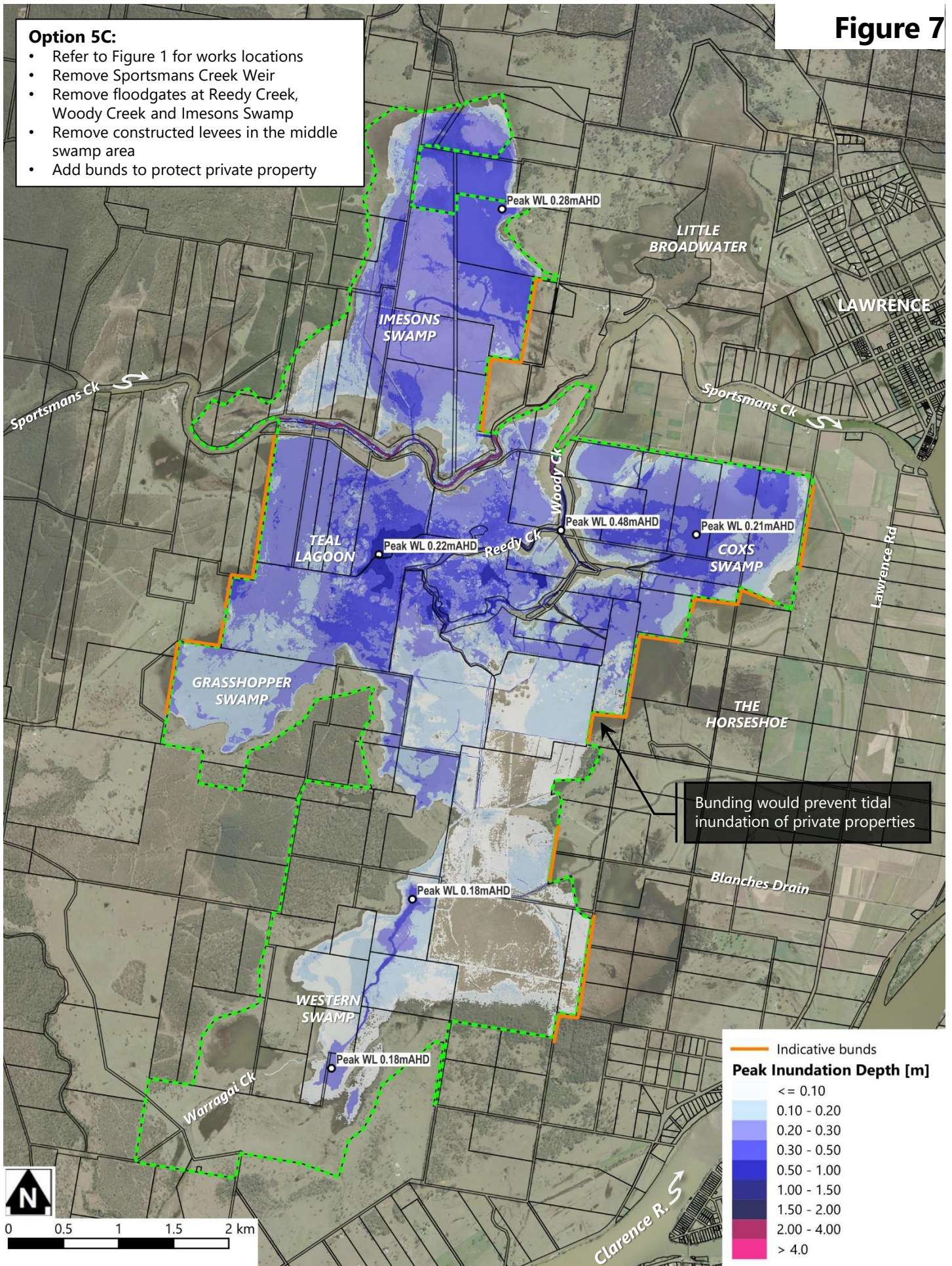


Option 5B
Peak Inundation Depths and Levels
2025 Tidal Conditions

Figure 7

Option 5C:

- Refer to Figure 1 for works locations
- Remove Sportsmans Creek Weir
- Remove floodgates at Reedy Creek, Woody Creek and Imesons Swamp
- Remove constructed levees in the middle swamp area
- Add bunds to protect private property



Bunding would prevent tidal inundation of private properties



Prepared by:

**Option 5C
 Peak Inundation Depths and Levels
 2025 Tidal Conditions**