



Many popular visitation areas are situated on the escarpments overlooking the Grose Valley, Blackheath, and the Jamison Valley, from Wentworth Falls to Katoomba and these attract both local and international visitors.

Govetts Leap is located at Blackheath and is within the Blue Mountains National Park (BMNP) which is part of the Greater Blue Mountains World Heritage Area (GBMWH). The lookout is on the escarpment edge overlooking the Grose Valley wilderness area, with the site being accessed by both car-based visitors, escarpment walkers and local pedestrians.

Although the site has striking views, many of the amenities are in need of repair or replacement to better suit the needs of visitors and reflect the unique nature of the site.

The Govetts Leap Draft Visitor Precinct Plan aims to redevelop Govetts Leap to become a world class visitor precinct, whilst protecting world heritage values, creating a lookout that is cherished by local residents and leaves a lasting impression on both domestic and international visitors.

The Govetts Leap Draft Visitor Precinct Plan has been prepared to be submitted with (and in accordance with) the Plan of Management (hereafter referred to as PoM) Amendment (prepared by National Parks & Wildlife Service).

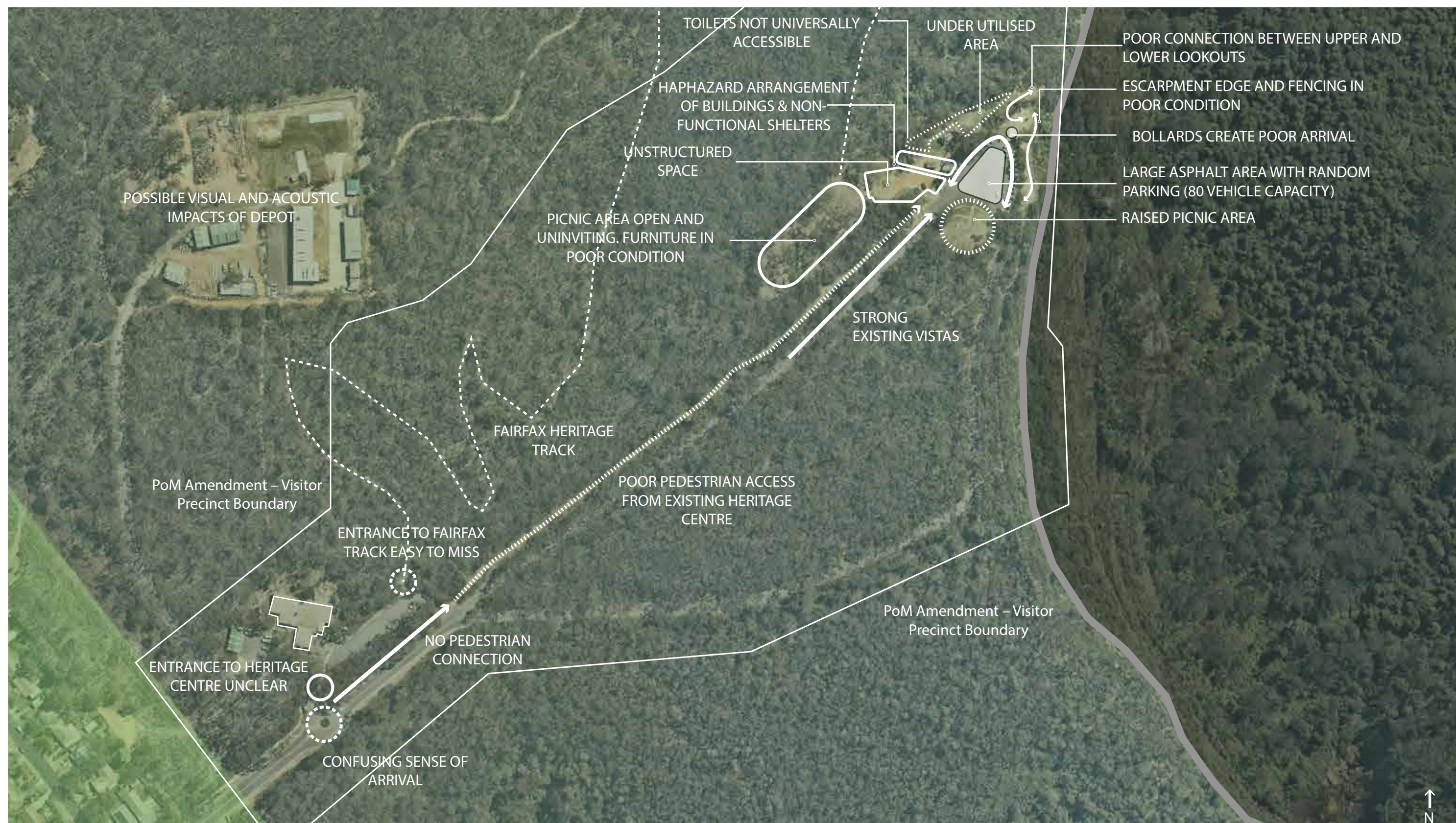
DISCLAIMER This report was prepared by CLOUSTON Associates in good faith exercising all due care and attention, but no representation or warranty, express or implied, is made as to the relevance, accuracy, completeness or fitness for purpose of this document in respect of any particular user's circumstances. Users of this document should satisfy themselves concerning its application to, and where necessary seek expert advice in respect of, their situation.

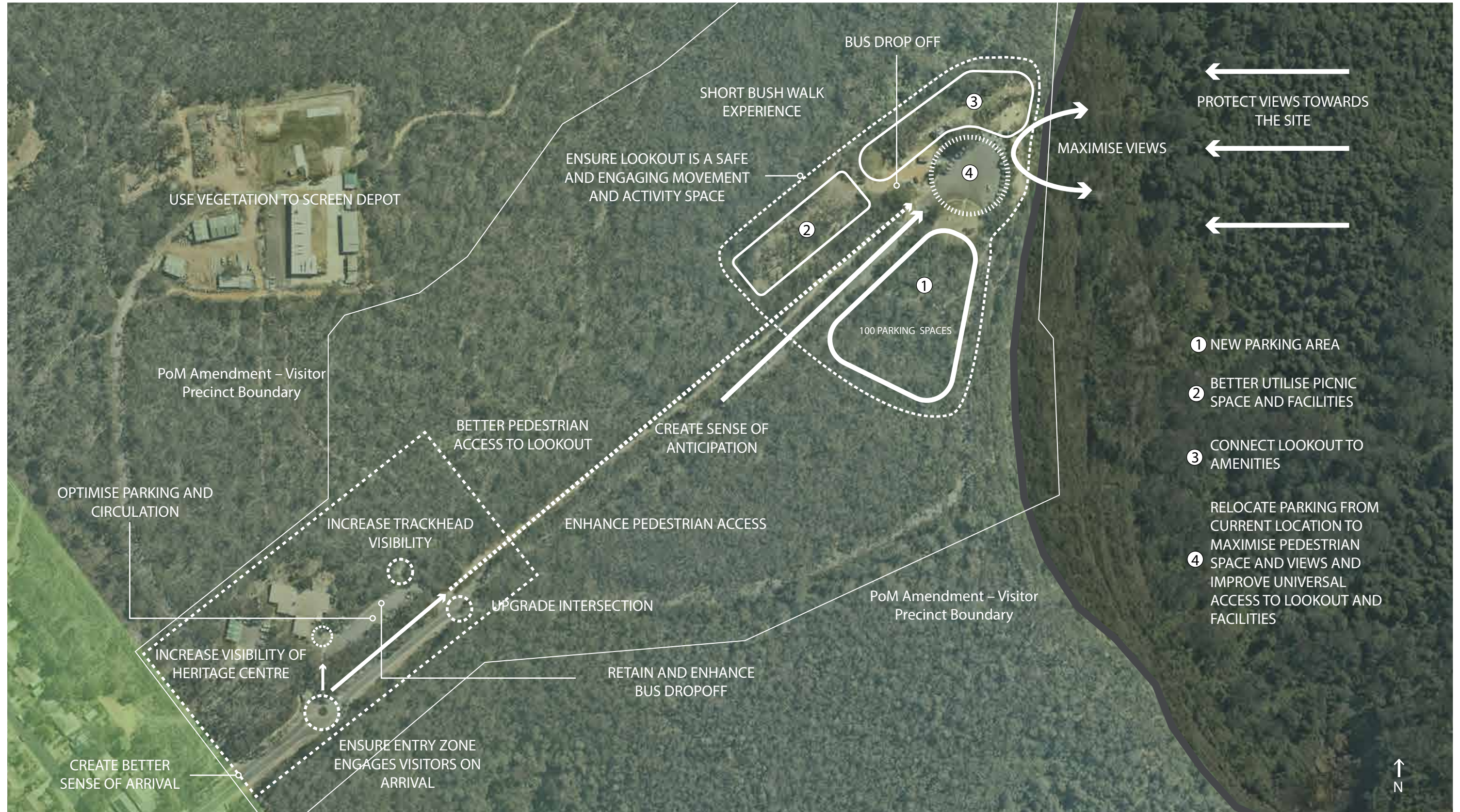
The views expressed within are not necessarily the views of the Department of Planning, Industry and Environment (DPIE) and may not represent DPIE policy.

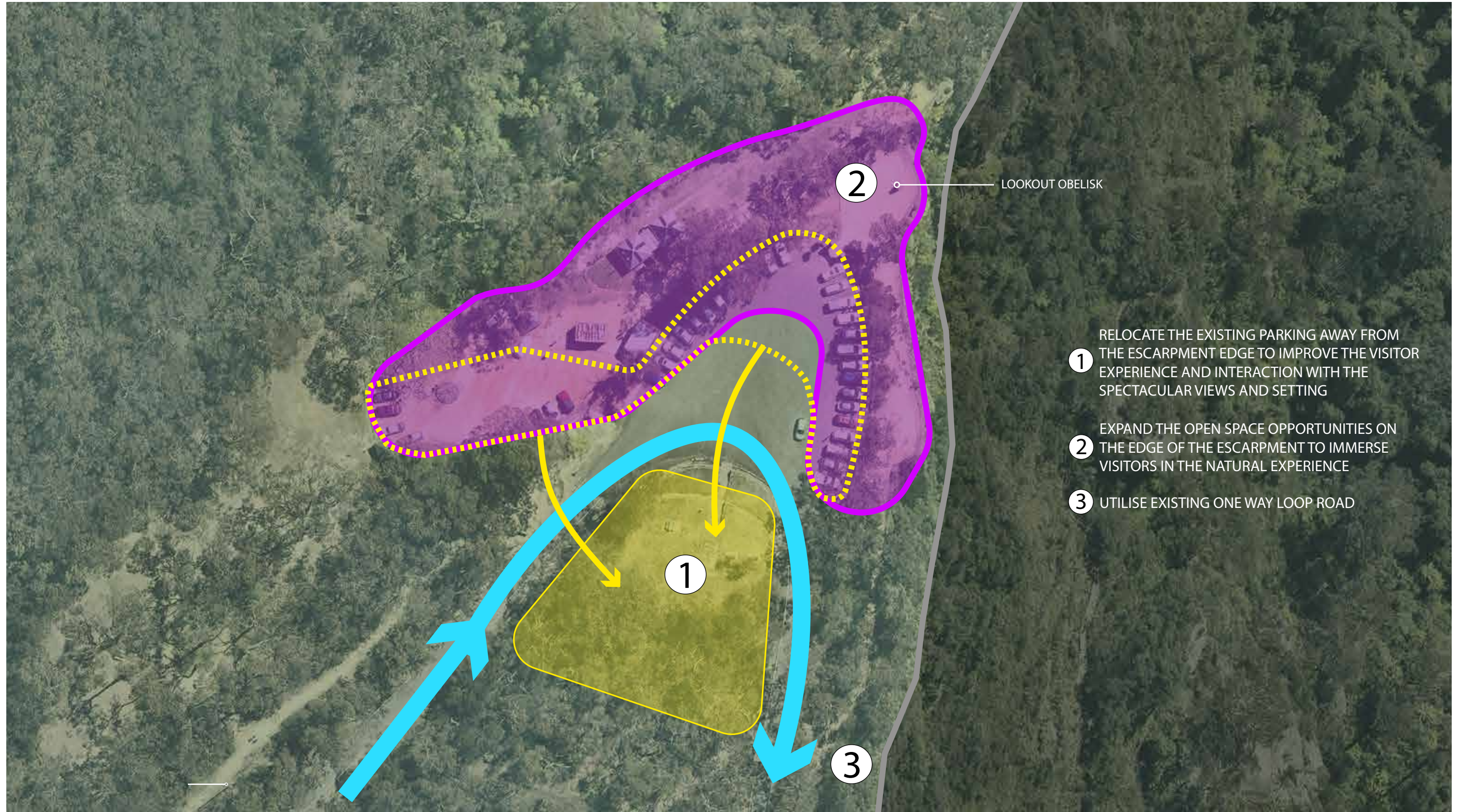
© Copyright State of NSW and the Department of Planning, Industry and Environment

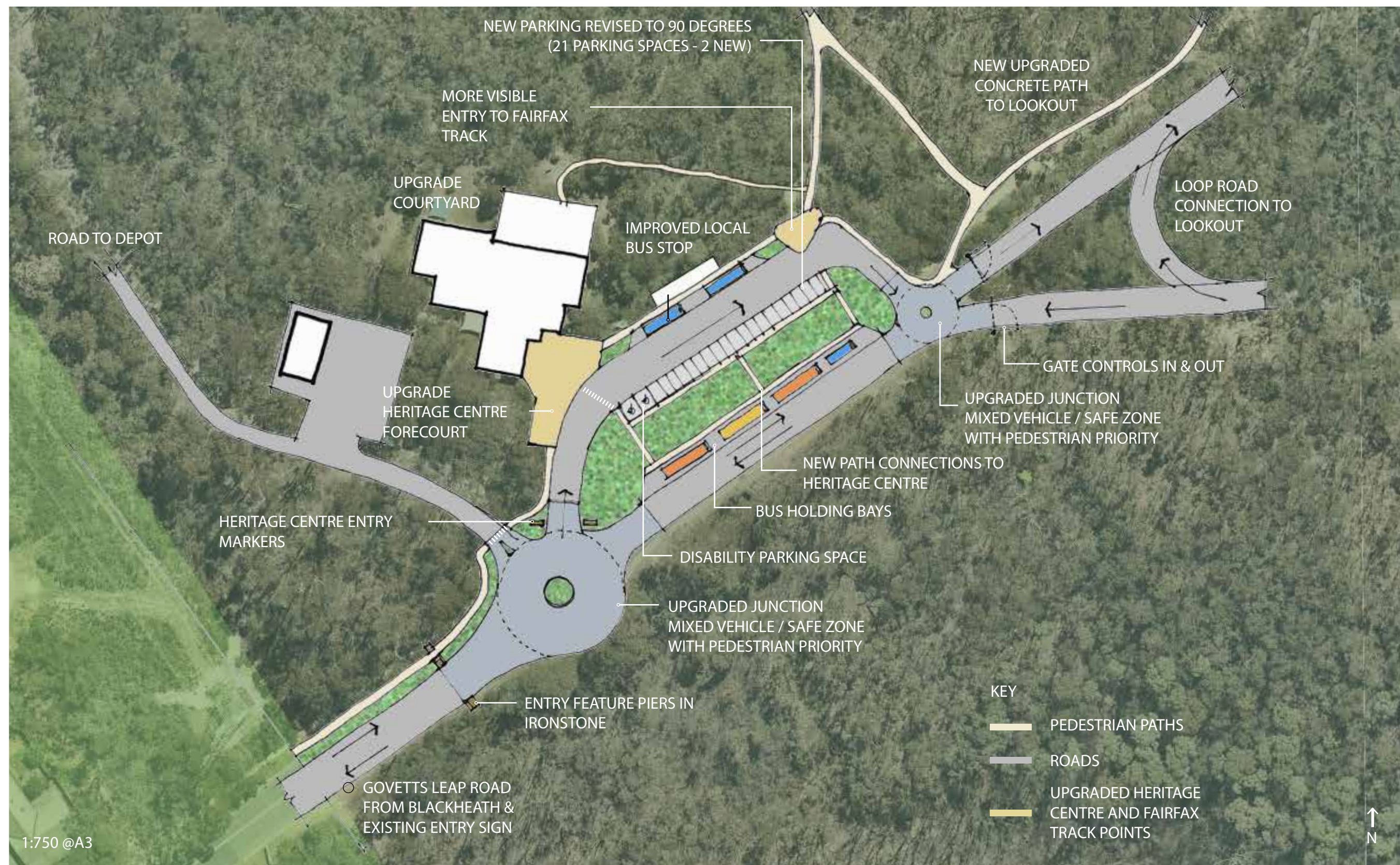
















KEY THEMES

- Aboriginal Cultural Heritage
- Historic Heritage
- Cradle of Conservation
- World Heritage Values" (flora, fauna, geology).

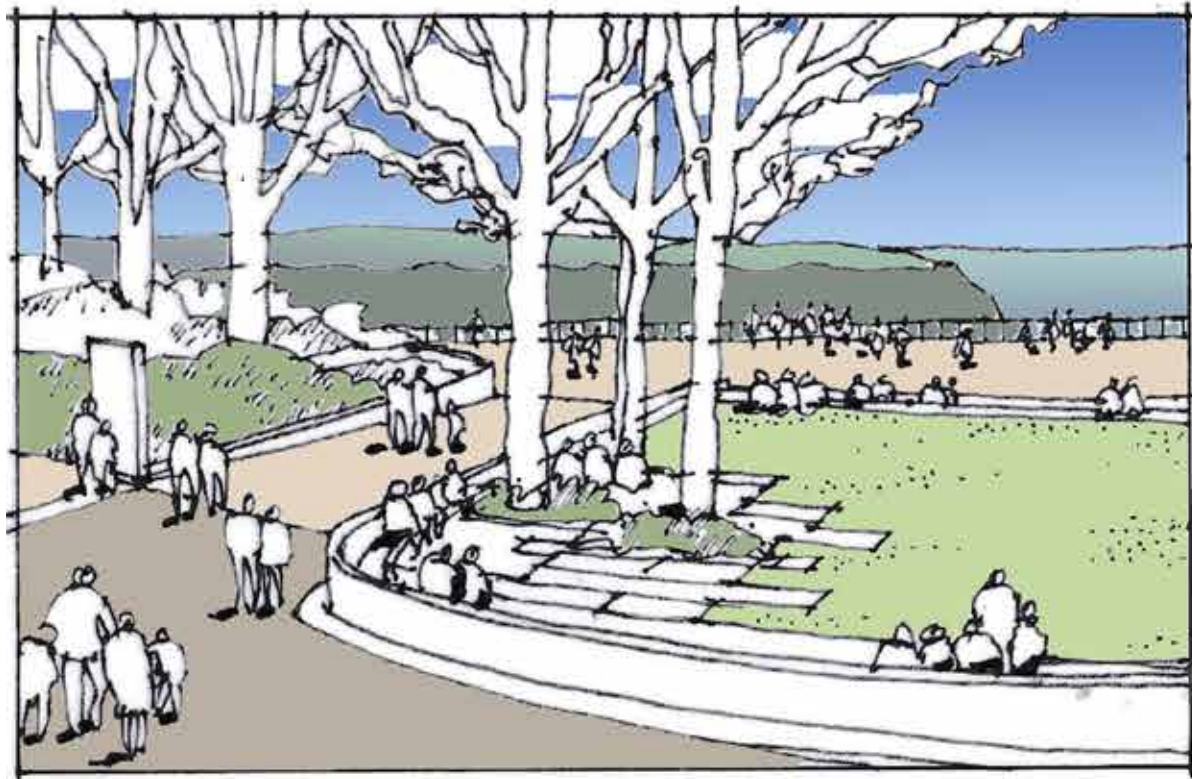
ELEMENTS

- Wayfinding signs with strong emphasis on graphics and minimal text
- Interpretation information will encourage visitors to return to the Heritage Centre for further information
- Digital interaction option

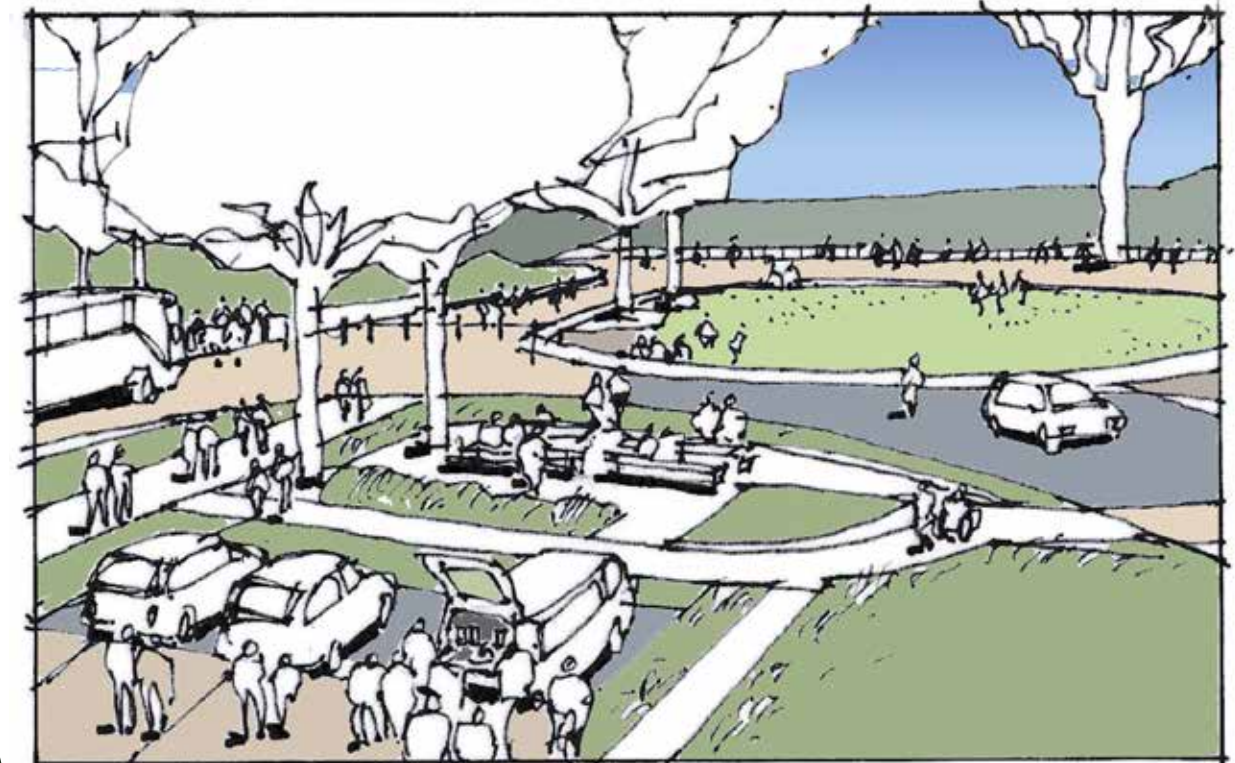








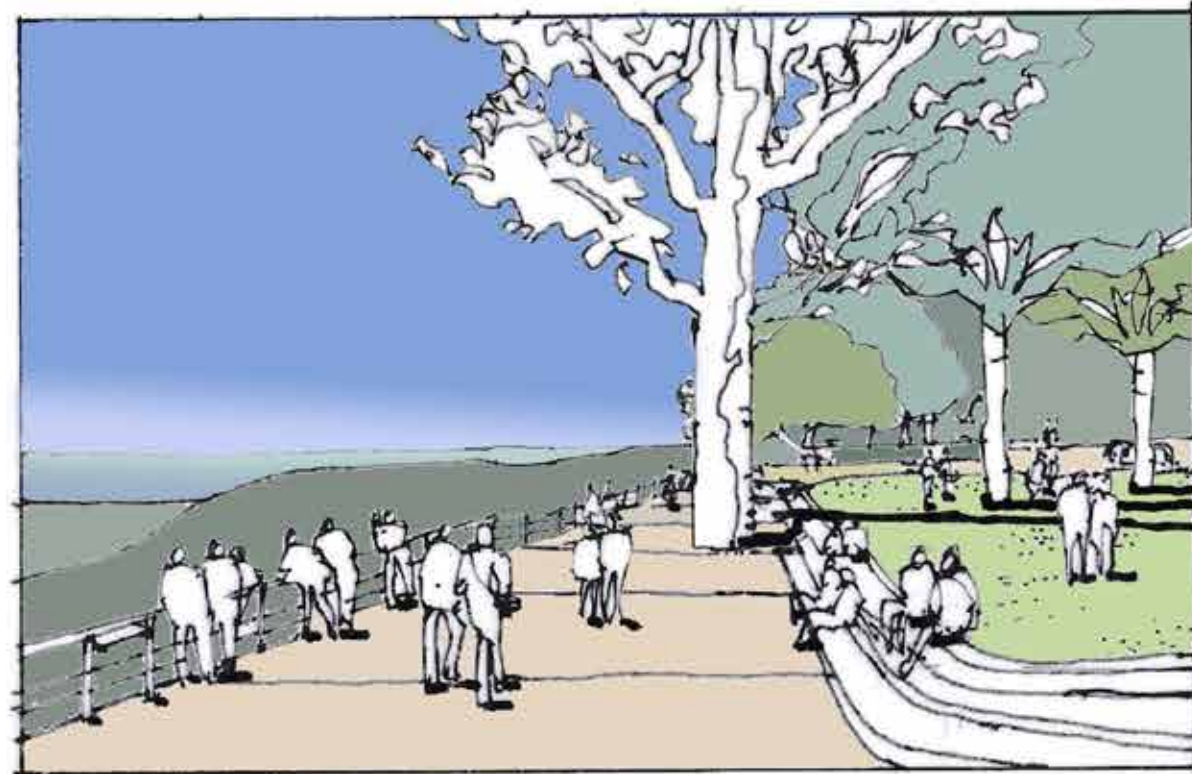
①



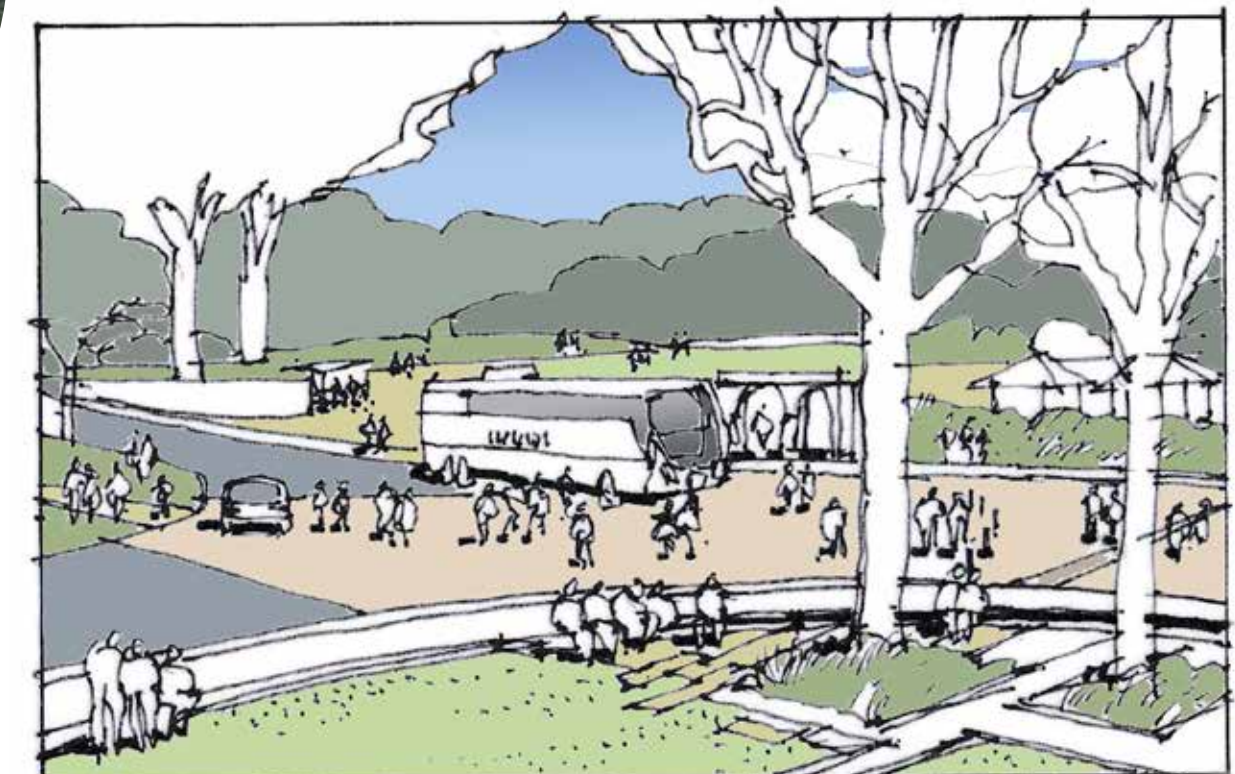
②



VIEWPOINT LOCATIONS



③



④

GOVETTS LEAP DRAFT VISITOR PRECINCT PLAN



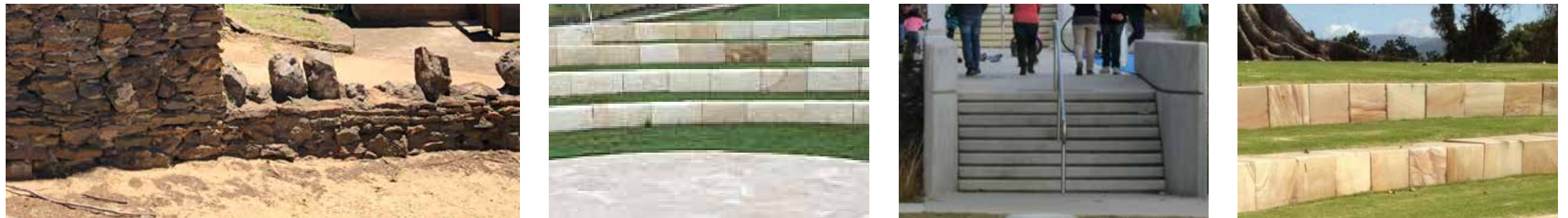
Materials



Structures



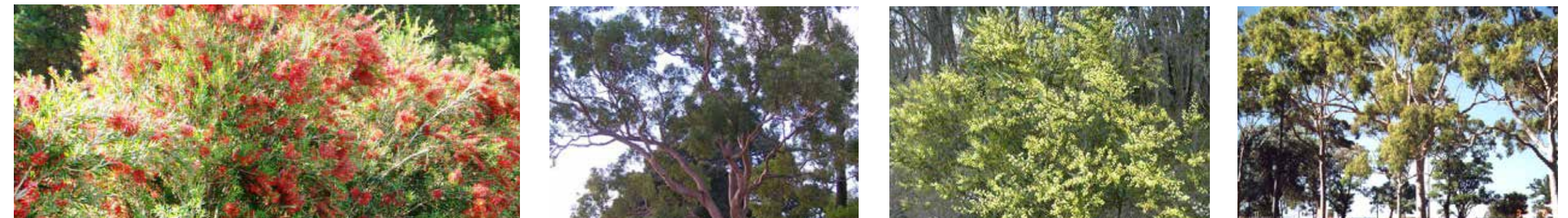
Walls & Seating



Signage & Interpretation



Planting



VISITATION

ENCOURAGE VISITORS TO LINGER & EXPLORE



- Ensure that increased parking is provided in a safe way to accommodate an increase in visitors to the site
- Provide a range of spaces for people to engage with apart from the main lookout
- Interpretation that engages with visitors as well as encourages further exploration at the Heritage Centre
- Wayfinding that gives visitors a better sense of the surrounding trails for those who may be uncertain or have limited experience with the bush

EXPERIENCE

CREATE A MEMORABLE EXPERIENCE



- Ensure space for visitors to move safely around the site, with parking set back from the main lookout
- Maintain an unobstructed lookout so that the view is celebrated
- Provide for a range of experiences such as community events and educational opportunities, as well as tourists

ACCESSIBILITY

PROVIDE ACCESS AND ENVIRONMENT FOR ALL



- Provide opportunities for people of all abilities to experience the outstanding example of indigenous Australian flora through their experience at the lookout
- Provide universal access to the lookout through ramping, as well as drop off points and disabled parking for ease of access for all visitors

HERITAGE

TELL THE STORY THROUGH HERITAGE



- Cover a diverse range of topics from Aboriginal and European heritage, ecology and geology
- Give an understanding of how Govetts Leap relates to the wider Blue Mountains and World Heritage Significance
- Adapt and reuse elements on site in current locations where possible, such as existing stonework (shelters, the lookout obelisk etc) and where elements may cause access issues (such as the archway) consider relocation to more suitable location