

Appendix I

Historic Maps and Plans of Mungo National Park



SALVANALED

PLAN OF PORTION 13

of the Township of *Wentworth* Parish of *Romaine*

Applied for under the 2^d clause of the *Common-Land Act* of 1825 by
J. H. Patterson

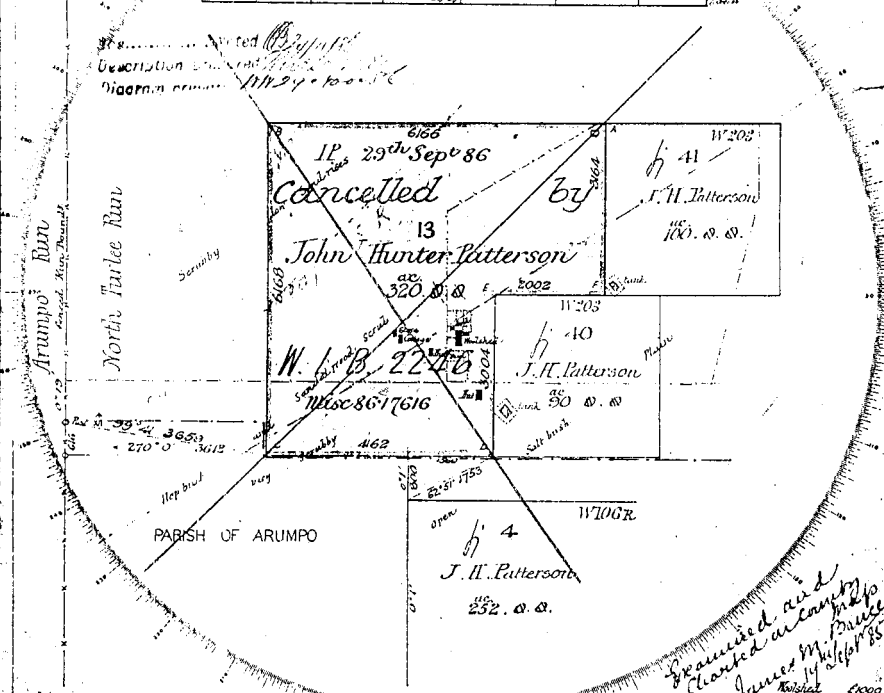
Partly within T5R 327 N14 22nd March 1878

4th do do Extension N14 10th March 84

IP 84.132 of 20th Dec 1878

Observation for Meridian

Station	Latitude	Bar	Zenith	True Bearing	Magnetic &c	Correction
E	33° 44'	Thurgood's	85° 46'	154° 14'	147° 9'	7° 54'



Azimuth taken from N° 40

Reference to Corners					Reference to Traverse		
Corner	Bearing	From	Links	Nº on line	Line	Bearing	Distance
A	322 15	Box	12 1/2	41 13	Traverse No. 85/142 29 Sep 1875 Sip. Macdonald (32) p. Sip. Macdonald (32) p. Sip. Macdonald (32) p. Sip. Macdonald (32) p.		
B	But			13			
C				13			
D				40 13			
E				40 13			
F				41 13			

Situated in the North Turtle Run

Scale 20 Chains to an Inch.

I hereby certify that the person made and on the 15 May 1885 completed the survey represented on this plan, on which are written the bearings and lengths of the lines measured by me, and I declare that the survey has been executed in accordance with the regulations published for the guidance of Licensed Surveyors, and the practice of the Surveyor General's Department.

W. Christie

Transmitted to the Surveyor General with this letter on the 3rd May 1885

279-1820



PLAN OF PORTION 3

County of Taita

Parish of Taita

LAND DISTRICT OF BALRANALD

LAND BOARD DISTRICT OF HAY

Forfeited Resumed Area No 148 Col Col Pastoral Holding, Western Division.

Applied for under the Section of the Crown Lands Act of 1884 by

Within Inferior Land's House No 36 granted 9th October 1884

Port No C.P. No

Port No C.L. No

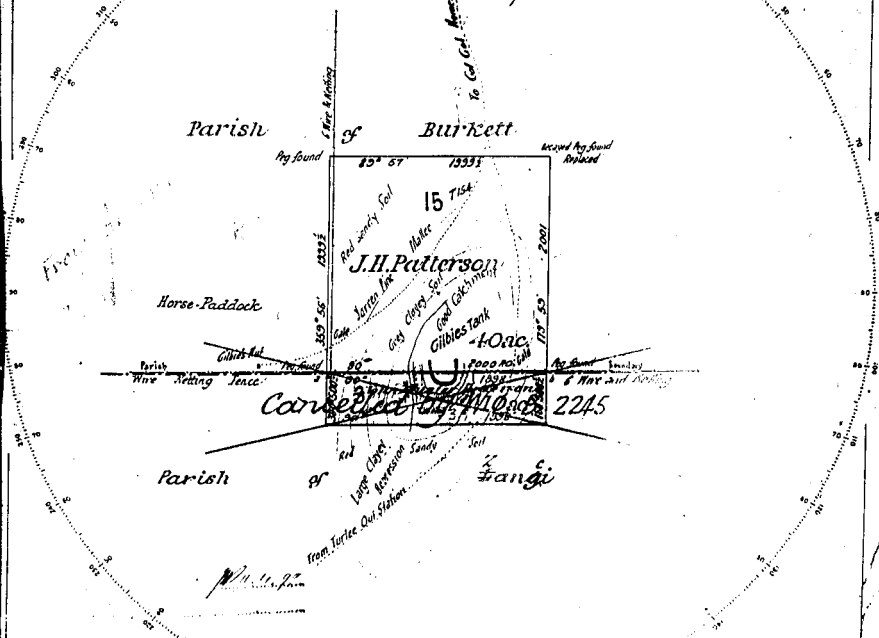
Measured for Auction Sale

T175-1979

1 Balranald No 148, 120 5/8

NTRY LOT

NOTION Sold to John Hunter Patterson (3/4) Sale completed



Azimuth taken from a.b

Field Book Vol. 645 Taita 1

Reference to Corners

Corner	Bearing	From	Links	ft on Plan
Marked pegs at all Corners				

Reference to Traverse

Line	Bearing	Distance

Certified Copy to Hqad Office

Reference to R. A. to Corbett 14/11/1884
on the 27th June 1884 completed the survey represented on this plan on which are written the bearings and lengths of the lines measured by me and I declare that the survey has been executed in accordance with the regulations published for the guidance of Licensed Surveyors and the practice of the Department of Lands.

L. C. Stuart

Licensed Surveyor

Witnessed in the District Surveyor with me on the 10th June 1884

Forfeited No Passed
Cultivation Book No
Checked and Checked
Attest
Plan approved

Value of Improvements Perching 4/18
Taita (pays) 1/2 3/4

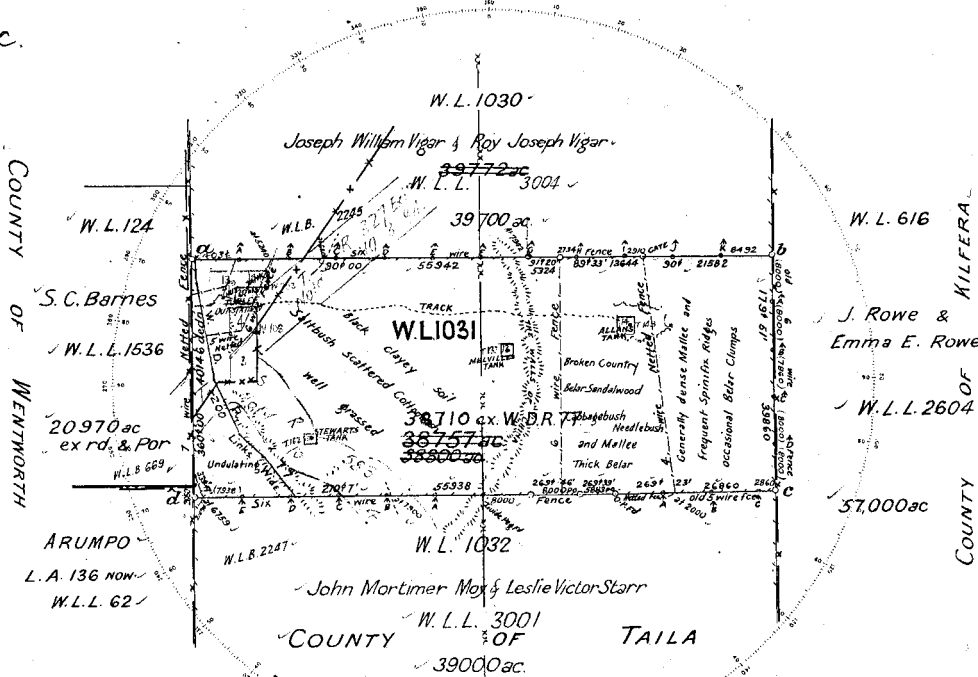
T 175 1979 Scale 30 Chains to an Inch.

Prepared and Bound in the Department of Lands Victoria 1884

bioRxiv preprint doi: <https://doi.org/10.1101/2018.07.11.259007>; this version posted July 11, 2018. The copyright holder for this preprint (which was not certified by peer review) is the author/funder, who has granted bioRxiv a license to display the preprint in perpetuity. It is made available under aCC-BY-NC-ND 4.0 International license.

Applied for under the 26th Section of the Western Lands Act of 1901 by Ewen Cameron & Angus Cameron

90 ac.



Plan re-approved for 38710 ac. ex. W.D.R.F.

May 21. 12-1967
Draftsman.

43mm x 28mm taken from W.L. 1030
Field Book Vol. 148 Folios 63 to 68

Reference to Corners			
Cornor	Beginning	From	Links W or True
<i>a</i>		<i>Post</i>	WL 1030 1031
<i>b</i>		<i>Post</i>	do
<i>c</i>		<i>Post</i>	WL 1031 1032
<i>d</i>		<i>Post</i>	do

Vide Sur. Granter's Report W.L.B. 29/3178

TOTAL $\overline{2531.17.3}$

I hereby certify that I in person made and on this 9.5.22 completed the survey represented on this plan on which are written the bearings and lengths of the lines measured by me and I declare that the survey has been executed in accordance with the regulations of the Western Land Board.

J. Grant Licensed Surveyor
 Forwarded to the Secretary Western Land Board with my letter of 30.5.22 N° 38

100.0

Voucher No 22/3,3 Passed £ 59. 11. 10

Calculation Book No. C. 10 Page 71

Checked and Charted *J. Stuart Terry* 11/2/23

Examined L. H. Johnson 15.3.25

Plan approved 20th March 1923

1. 71 2 d

L. B. Johnson

100-443887-100

Scale 160 Chains to an Inch.

Cat. No. WLB.2246

[illegible]

152217

30.14.22

— 100 —

[illegible]



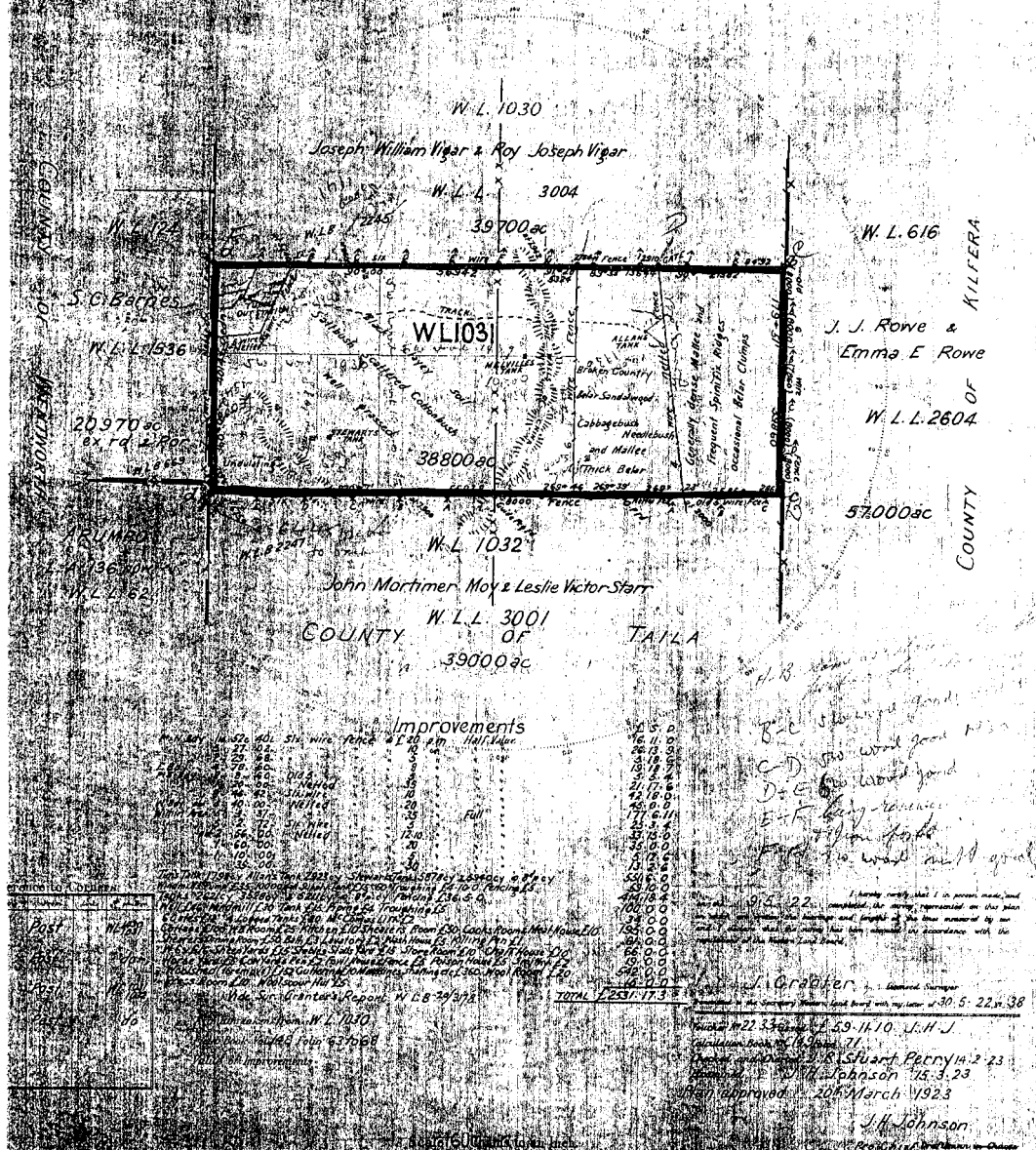
PLAN OF PORTION WL 1031

County of Mailel x The Western Division

DESIGNED AND LEASEHOLD AREAS No 148 "GOL GOL"

Witnessed and signed for me this 26th Section of the Western Lands Act of 1901 by Ewen Cameron & Angus Cameron
with test SR 22194 Ewen & Angus Cameron M-3 84

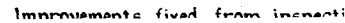
2000 ride Cateffe dated 36 6 22 A.C. Barnes

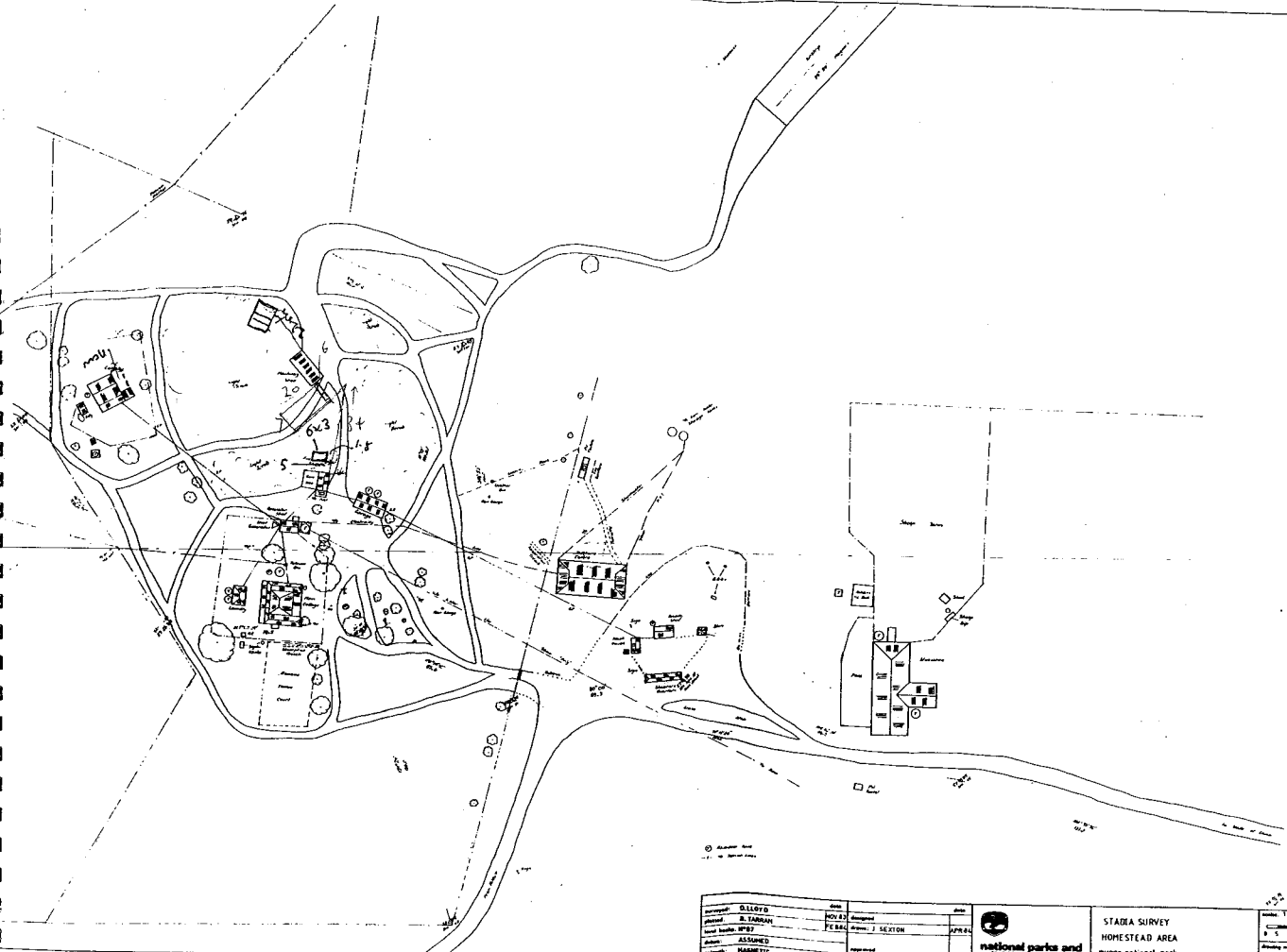


Proctor, A. Frederick, in Odores

TO
ST SIZE
E COPYING.

A W Barnes
"JOURNAL"
WLL 3001





Investigator: D. LLOYD	Date: NOV 87	Date:
Officer: R. TARRAN	Designated: FEB 88	
Investigation No: 87-87	Drawn: J. SEXTON	APR 88
Subject: ASSUMED	Notes:	
Remarks: MAGNETIC	See no.	



STADIA SURVEY
HOMESTEAD AREA
mungo national park

