

Northern Rivers Region

Toonumbar NP & SCA

Fire Management Strategy (Type 2)

2005

Sheet 1 of 1

This strategy should be used in conjunction with aerial photography and field reconnaissance during incidents and the development of incident action plans.

These data are not guaranteed to be free from error or omission. The NSW National Parks and Wildlife and its employees disclaim liability for any error due to the information in this data and any consequences of such error or omission.

This document is copyright. Apart from any fair dealing for the purpose of study, research, criticism or review, as permitted under the copyright Act, no part may be reproduced by any process without written permission.

The NSW National Parks and Wildlife Service is part of the Department of Environment and Conservation (NSW), December 2005.


Contact: NSW National Parks and Wildlife Service, Northern Rivers, PO Box 856 Alstonville 2477.

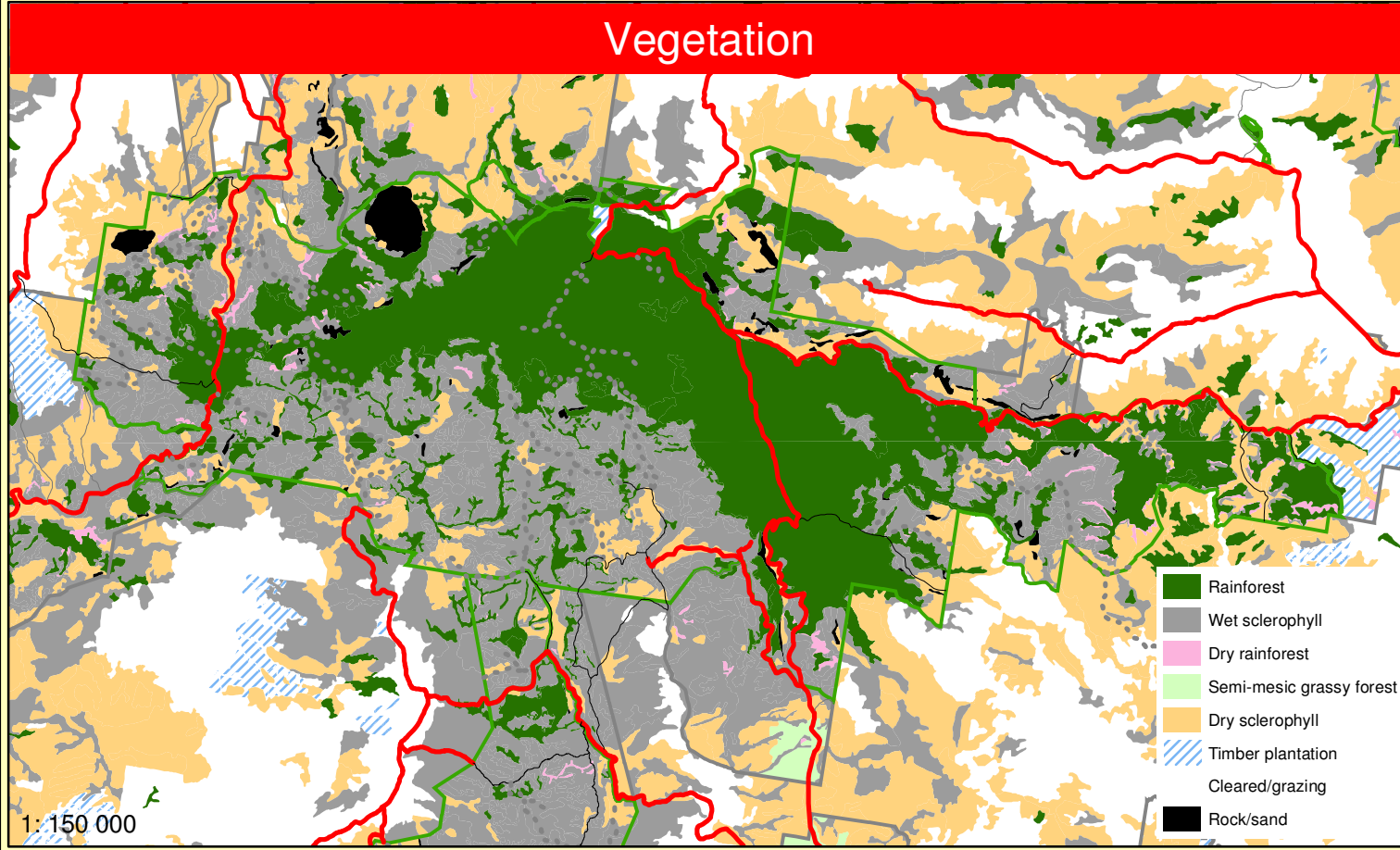
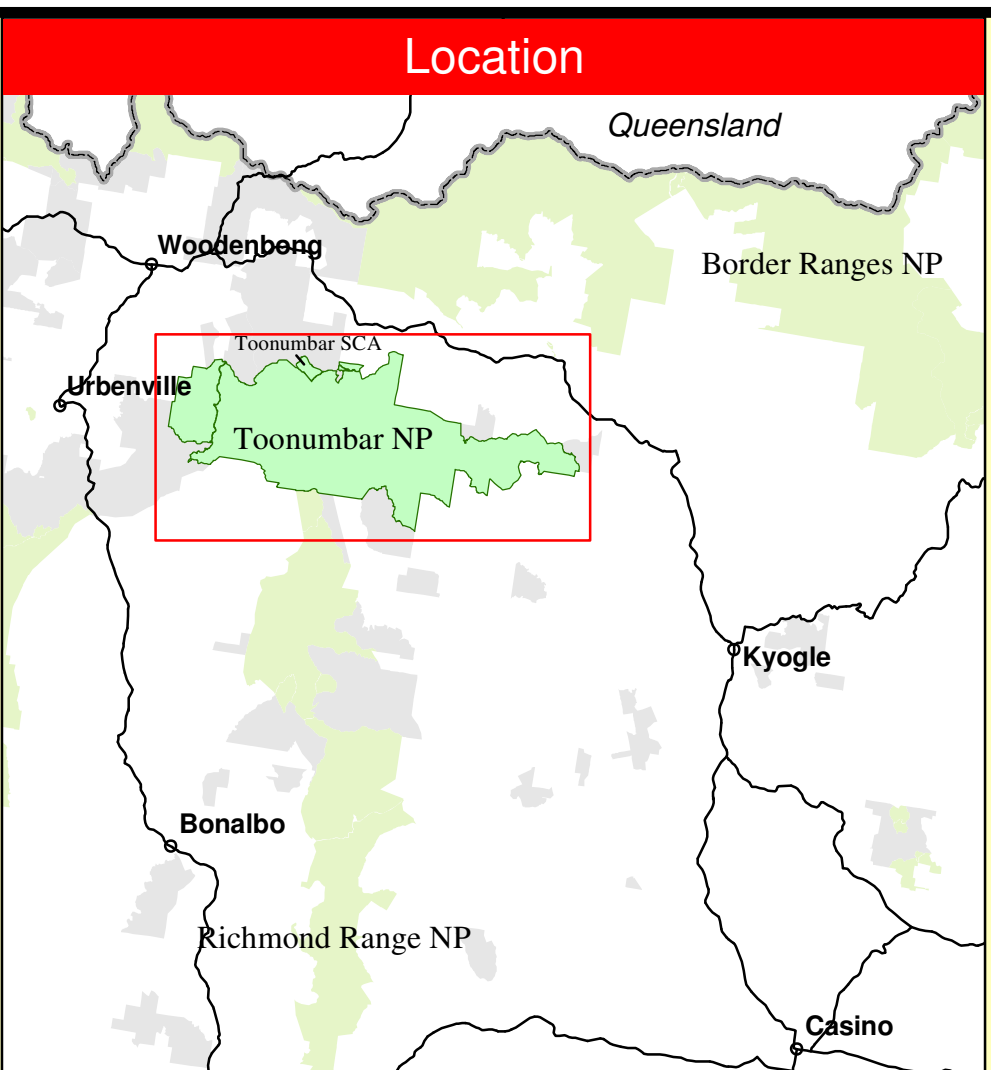
ISBN 1 74137 471 5

DEC Number: 2005/345

Last Updated: 16 Dec 2005

This strategy is a relevant Plan under Section 38 (4) and Section 44 (3) of Rural Fires Act 1997.

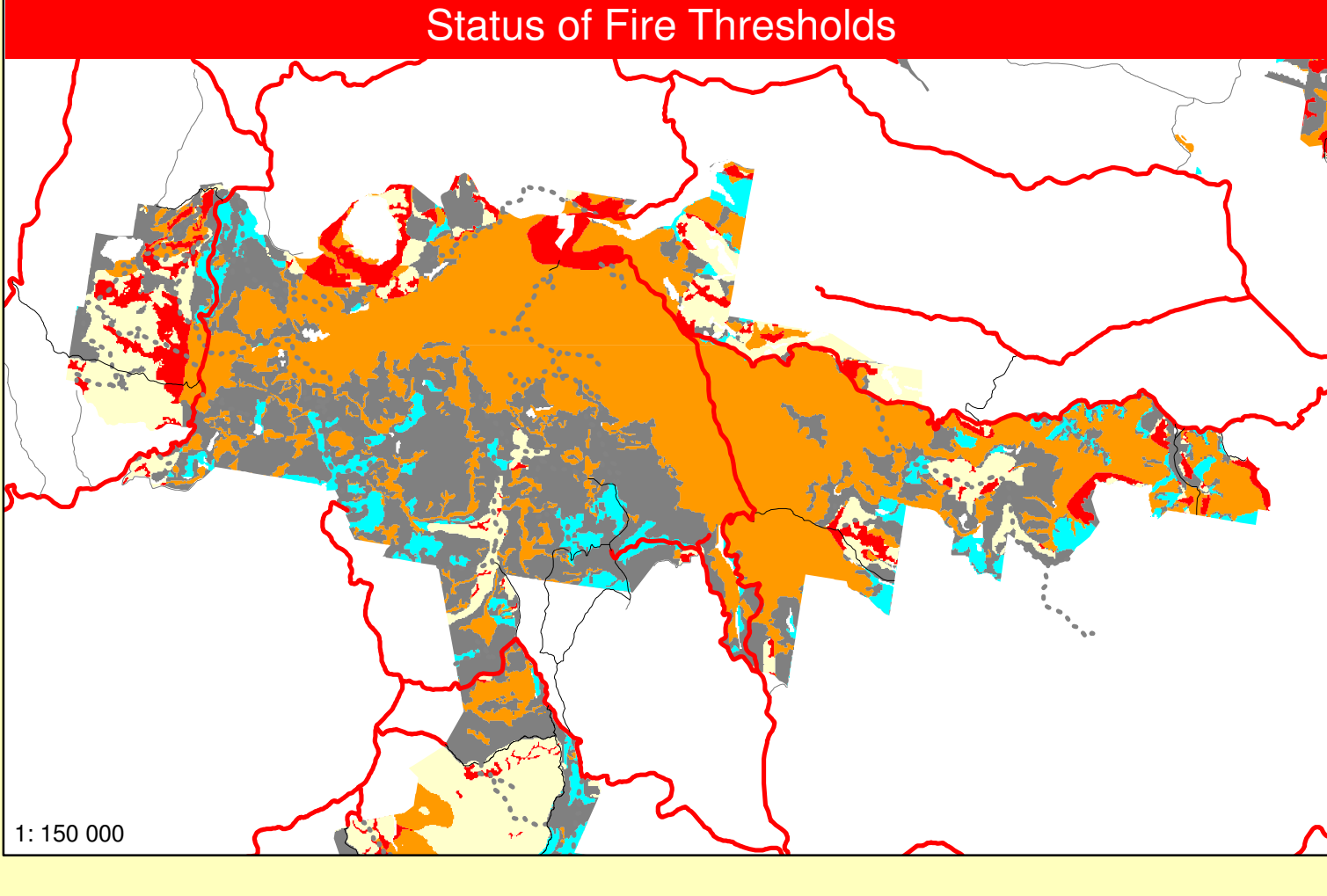




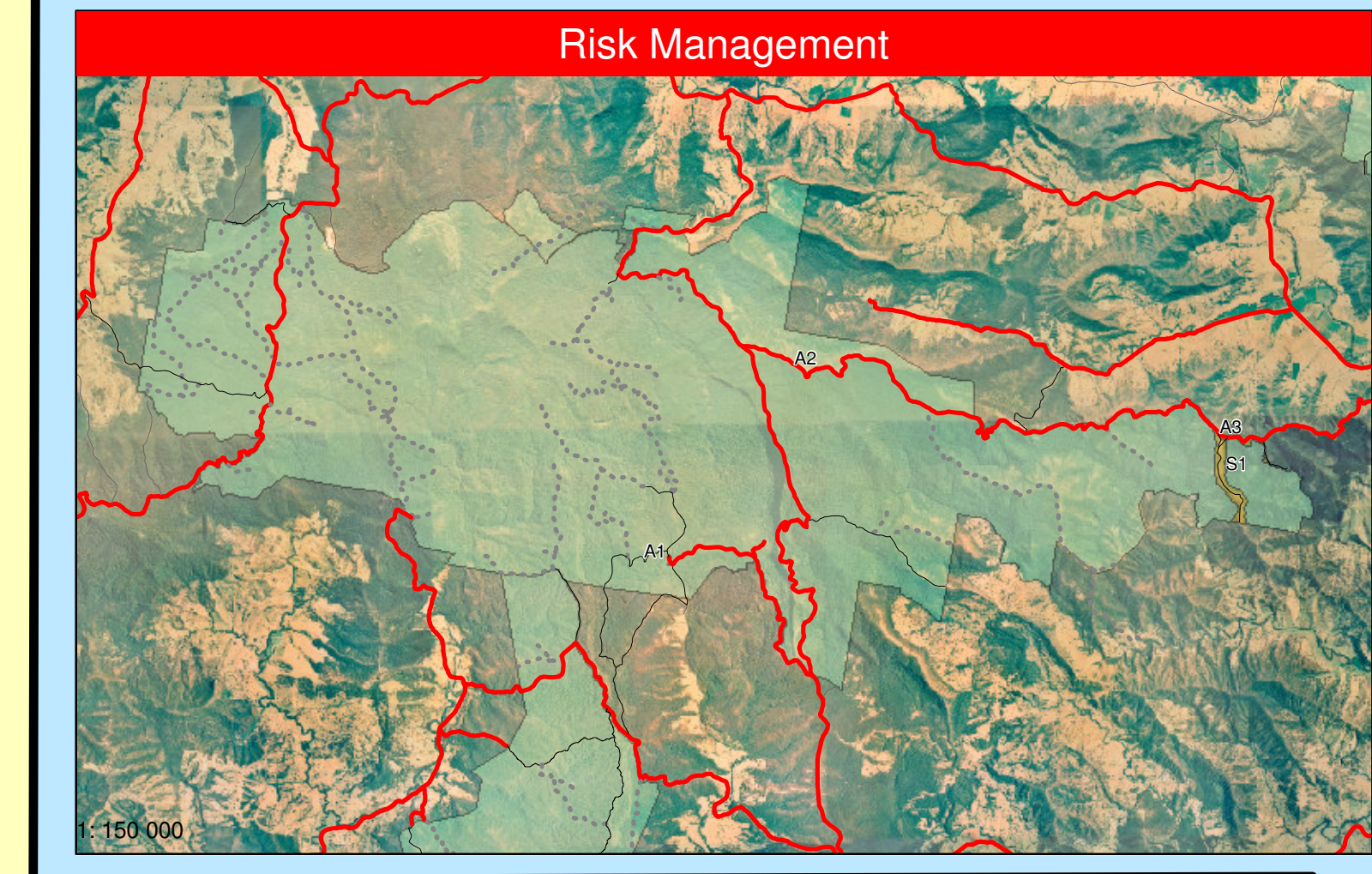
Projection: UTM  
Datum: AGD66  
Grid: AMG Zone 56J

Noted scale values are true on A0 paper.

Operational Guidelines	
Refer to Strategy for Fire Management 2003 and Fire Management Manual 2004. Brief all personnel involved in suppression operations on the following issues:	
Resource	Guidelines
Aboriginal Cultural Heritage Site Management (NPWS FMM 4.11)	Aboriginal sites are not shown on this version. Valuable sites will be shown on the operational version of this strategy following consultation with the Aboriginal Community.
Historic Heritage Management (NPWS FMM 4.10)	The 'Sensitive Area Management System' identifies locations of sites on park roads. Green guide posts indicate areas of sensitivity where no disturbance by earthworks is to occur.
Threatened Fauna Management (NPWS FMM 4.12 & 5.2)	No known sites in park. If new sites located consult with a senior NPWS officer.
Threatened Flora Management (NPWS FMM 4.12)	Avoid impact on rainforest.
Threatened Property	Avoid impact on streams.
General	Protect large and hollow-bearing trees.
Aerial Water Bombing (NPWS FMM 4.4 / NSW Fire Agencies Aviation SOPs O2 / NPWS Guidelines for Effective Aircraft Management)	Avoid impact on rainforest.
Aerial Ignition (NPWS FMM 4.2.20 & 4.4 / NSW Fire Agencies Aviation SOPs O2.4 / NPWS Guidelines for Effective Aircraft Management)	The 'Sensitive Area Management System' identifies locations of sites on park roads. Green guide posts indicate areas of sensitivity where no disturbance by earthworks is to occur. Operators to be briefed on this prior to any aerial ignition.
Backburning (NPWS FMM 4.5)	Property owners with assets at risk from a wildfire event should be kept informed regarding the progress of the fire and asked for an assessment of their current level of asset protection preparedness.
Command & Control (NPWS FMM 4.2)	Guidelines
Containment Lines (NPWS FMM 2.2 & 3.9)	Fauna should be used to increase the effectiveness of water bombing.
Earthmoving Equipment (NPWS FMM 4.2.20 & 4.3)	Aerial ignition may be used during back-burning or fuel reduction operations.
Fire Advantage Recording (NPWS FMM 4.2.20 & 4.9)	Utilise incinerators to rapidly progress back-burns down slopes where required.
Fire Suppression Chemicals (NPWS FMM 5.1)	Clear a 1m radius around dead and fibrousarked trees adjacent to containment lines prior to backburning, or wet down these trees as part of the backburn ignition.
Rehabilitation (NPWS FMM 5.1)	Avoid ignition of backburns at the bottom of slopes where a long and intense up slope burn is likely.
Smoke Management (NPWS FMM 3.4)	The first combatant agency on site may assume control of the fire, but then must ensure the NPWS is notified promptly.
Visitor Management (NPWS FMM 3.6 & 4.13)	On the arrival of other combatant agencies, the initial incident commander will consult with regard to the ongoing command, control and incident management team responses as per the relevant BPMC Plan of Operations.



Fire Thresholds	
Overburnt	Fire thresholds have been exceeded.
Vulnerable	Protect from fire as far as possible.
Recently Burnt	The area will be Overburnt if it burns this year.
Within Threshold	Protect from fire as far as possible.
Almost Underburnt	Time since fire is less than the optimum interval, but before that it was within threshold.
Underburnt	Avoid fires if possible.
Unknown	Fire history is within the threshold for vegetation in this area.



Fire Management Zones		
The objective of APZs is the protection of human life and property. This will have precedence over guidelines for the management of biodiversity. Maintain overall fuel hazard at moderate or below during bushfire danger period.		
Asset Protection Zones	Zone	Action
	Iron Pot Creek (A1)	Mechanical treatment when overall fuel hazard reaches moderate.
	Sherrwood (A2)	Mechanical treatment when overall fuel hazard reaches moderate.
	Toonumbar Tower (A3)	Mechanical treatment when overall fuel hazard reaches moderate.
Strategic Fire Advantage Zones	Zone	Action
	Roseberry	Prescribed burn when overall fuel hazard reaches high.
Heritage Management Zones	Zone	Action
	Capene 94404N	Prescribed burn when overall fuel hazard reaches high.

Contact Information		
Agency	Position / Location	Phone
NPWS	Kyogle Area Office	6632 0000
	Regional Office 24 hrs	6632 0000
	Aboriginal Cultural Heritage Officer	6632 0000
RFS	Kyogle Fire Control Centre	6632 2555
	Duty Officer - Northern Rivers	6632 3044
Police	Kyogle Station (phone diverted if unattended)	6632 1444
	Urumbidgee Station	6634 1244
	Woolahatchie Station	6635 1244
Ambulance	Emergency	000
	Kyogle Station	13 1233
	Urumbidgee Station	13 1233
Forests NSW	Casino Office	6662 0900
	Fire & Protection Manager Bob Williams	6662 0906
Council	Kyogle Council - Enquiries	6632 1611
	After hours emergencies	0429 152 112

Communications Information		
Service	Channel	Location and Comments
NPWS - VHF	2	Roseberry, coverage over eastern half of park.
NPWS - VHF	4	Haystack, coverage over western half of park.
NPWS - VHF (Fireground Comm)	34	Fireground chat channel (single frequency) monitors channel 2.
NPWS - VHF (Fireground Comm)	36	Fireground chat channel (single frequency) monitors channel 4.
NPWS - VHF (Portable Repeater)	13	Blue Code. Northern Rivers Region. Stored at Regional Workshops / transportable.
RFS - PMR - UHF	76	76 for 100 Channel UHF radio.
Woodenbong	81	81 for 100 Channel UHF radio.
Homelough	83	83 for 100 Channel UHF radio.
Haystack	83	83 for 100 Channel UHF radio.
RFS - GREN	-	No service available.
CB - UHF	-	To be confirmed with RFS Brigade Captain on the day.
Forests NSW	78	Forests NSW Ch 5 Haystack Mountain
	81	Forests NSW Ch 5 Gibbston (Casino)
	84	Forests NSW Ch 8 Mt Nandi
Aircraft - VHF	135.45 MHz	Or as directed by the Incident Commander or Air Operations
Mobile Phone - CDMA	Poor	Variable. Best reception at elevated points.
Mobile Phone - GSM	Poor	Variable. Best reception at elevated points.

Suppression Strategies	
Wildfire	Guidelines
	A typical wildfire season begins in early September through to December, with the arrival of typical summer weather patterns. Summer weather patterns are characterised by north to northeasterly winds, high temperatures and low humidity.
Hazard Reduction	During drought years the fire season may start as early as June and finish as late as March.
Moderate & Extreme Fire Weather	Large Amount and Winter. HR is achievable in early spring but not desirable ecologically, running the risk of impacts by dry southeasterly winds associated with August / September.

