

GAP BLUFF HOSPITALITY PTY LTD

Operational Waste Management Plan

REVISED EXHIBITION DRAFT

Gap Bluff Centre
Officers Mess

The Armoury

Gap Cottage

Camp Cove Precinct
Constable Cottage

33 Cliff Street

Green Point Cottage

PREPARED BY:
BEAUCON PTY LTD

CONTENTS

1. Objective	3
2. Waste Handling, Collection, Removal & Disposal.....	4
3. Defining Waste	5
4. Waste Volumes.....	5
5. Education	7

Appendices -

Appendix a.	Waste Management Area
Appendix b.	Organic Waste Disposal
Appendix c.	Cardboard Compactor
Appendix d.	Glass Waste Disposal
Appendix e.	Used Cooking Oil Collection

DISCLAIMER

This report was prepared by Gap Bluff Hospitality in good faith exercising all due care and attention, but no representation or warranty, express or implied, is made as to the relevance, accuracy, completeness or fitness for purpose of this document in respect of any particular user's circumstances. Users of this document should satisfy themselves concerning its application to, and where necessary seek expert advice in respect of, their situation. The views expressed within are not necessarily the views of the Office of Environment and Heritage (OEH) and may not represent OEH policy.

© Copyright State of NSW and the Office of Environment and Heritage

1. Objective

The primary objective of the Gap Bluff Hospitality (GBH) Pty Ltd Waste Management Plan is to establish processes enabling waste to be collected in a manner that minimises noise, volume of traffic and cross contamination therefore minimalizing impact on the neighbourhood and promoting recycling.

All waste will be managed at its specific location, with most waste created and held at Officers Mess and the Armoury within appropriate containers within designated areas. Waste storage and collection will take place from each location. All waste from the Short-term accommodation Cottages will be removed as part of the daily cleaning procedures and stored at each location in the traditional Council bins, per domestic use.

This management plan is a fluid document which will be adjusted as required to meet the changing requirements and regulations in the Waste Management Industry including:

Changes in tipping costs	Changes in what is accepted at tips
Changes in recycling methods	Changes in the definition of waste
Usage patterns and behaviour	Environmental, Presentation, Pest control etc.

For the purposes of this plan all waste is split into 4 major waste streams:

Recyclable – any item that is recyclable commonly referred to in this document as **“Dry” waste**.

Non-Recyclable - cross contaminated or non-recyclable waste streams, commonly referred to in this document as **“General” waste**.

Organic Waste – Food waste/organic waste that can be recycled through the organics waste stream via the PulpMaster system commonly referred to **“Organic” waste** in this document.

Special Waste – waste that must be handled in a special manner that may result in recyclable waste, items that are partially recyclable, re-usable products or non-recyclables

2. Waste Management Area - Waste Handling, Collection, Removal & Disposal

It is intended that one principal waste management area will be provided within the Gap Bluff Precinct, located at the Officers Mess. All waste from The Officers Mess, The Armoury, Gap Bluff Cottage and Constables Cottage will be consolidated in this one centralised waste management area.

The general procedures for the collection, handling and movement of waste from the various areas within the Precinct to the centralised waste management area:

2.1 General Waste

2 General Waste 660L Bins will be provided at this location for the use of Precinct venues and cleaners. Collection will be arranged on an as needed basis, anticipated to be twice a week in low season April to August and 4 times a week in high season September to March.

2.2 Organic Waste

Organic/food waste is to be separated from other waste streams and placed in the Organic waste bins provided (Purple 120 litre mobile bins). Organic Waste will be processed in the PulpMaster system and converted to compost. The resulting compost will be used within the precinct pending approval from National Parks or collected for landfill, if not, albeit in significantly less volume. **(Refer Appendix b.)**

2.3 Cardboard Recycling

A cardboard compactor is located in the waste management area. All cardboard will be transported in mobile plastic bins (240 litres) to the waste management area. 1x50Kg bale is anticipated per week. **(Refer Appendix c.)**

2.4 Glass Recycling – Whole Bottles and Crushed Glass

A Bottle Crusher will be located at Officers Mess and The Armoury within an enclosed space to contain noise. All crushed glass waste is to be stored in blue 75 litre bins. Crushing of glass will be conducted after 9.00am and before 10.00pm at night. It is estimated that 2x75 litre bins per venue will be sufficient for the anticipated volume of glassware per week, year round. This will ensure a minimum of collections as glass is one of the bulkiest waste requirements. **(Refer Appendix d.)**

2.5 Cooking Oil Recycling

A cooking oil recycling system is located within the waste management zone. Oil caddies supplied by the service provider will be used to transport cooking oil for storage within the oil recycling system, ready for collection on an as needed basis. An estimated 1,000 litres of cooking oil will be consumed and recycled per year for Officers Mess and The Armoury. **(Refer Appendix e.)**

3. Defining Waste

For the purposes of this plan all waste is split into 4 major waste streams:

Recyclable – any item that is recyclable (dry waste)

Non-Recyclable - cross contaminated or non-recyclable waste streams (general waste)

Organics – waste of a food nature that is to be recycled.

Special Waste – waste that must be handled in a special manner that may result in recyclable waste, items that are partially recyclable, re-usable products or non-recyclables

3.1 Recyclable Dry Waste

3.1.1 Sorted Recyclable Waste

This waste will be collected by *Veolia Environmental services*.

Paper Waste

Paper Waste is disposed of in the cardboard bins nominated as Cardboard Waste bins and no other non-paper material such as Wet Waste, hazardous and construction materials is to be placed in such bins.

Paper Waste includes the following:

Cardboard	Photocopy paper
Printed or typed reports	Computer printouts
Writing pads	Hand towels
Newspapers	Phonebooks
Magazines	Brochures
Envelopes	Cardboard boxes

All other items containing some sort of paper/ cardboard/ fibre materials.

Glass Waste (Food area)

Glass includes -all clear, green and amber glass bottles, and jars. This waste will be disposed of in the blue glass recycling bins

Aluminium Cans (Food Area)

At this time Aluminium waste is disposed as general waste

Cooking Oil (Food Area)

Cooking Oil is stored in the onsite cooking oil recycling container for collection. The oil is recycled as bio-diesel by the “Oil recycling contractor”.

3.1.2 Unsorted Recyclable Waste

Unsorted waste will be disposed of as General Waste

Milk and Juice Cartons

- milk and juice cartons;
- poppers; and
- brick shaped cartons - eg, long life milk/juices.

This waste will added to the general waste bins located in the waste management areas

Steel Cans

- Steel cans - eg. food, coffee

Plastics

- Plastic Bottles

3.2 Non – Recyclable Waste

3.2.1 Wet Waste

Wet Waste is disposed of in general Waste bins and the general waste compactor nominated as general Waste and that no other material such as Recyclable Waste is placed in such bins. This waste will be collected by **Watts Waste**

General Waste is all waste not covered under the other recycling streams

3.2.2 Cross Contaminated Waste

All waste that is not separated and has General waste mixed with recyclables will be disposed of as General waste so as not to contaminate the recycling streams.

3.3 Special Waste

3.3.1 Recyclable & Partially Recyclable Waste

Fluorescent Tubes

Fluorescent Tubes will be disposed of in general waste, or, in bulk removed from site by the contractor replacing them.

Trade Waste

Trade waste will be mostly managed with Grease Arrestors installed at the Officers Mess and The Armoury in compliance with Sydney Water criteria SW255 01/13. Trade Waste will be collected on a quarterly basis or as required at approximately 6.00am, all

required access permits approvals will be sought as part of this process. The proposed collection time will ensure there is no disruption to any aspect of the precinct or neighbourhood.

Grease extractor units will be housed on Gap Bluff precinct to ensure all aspects of waste water treatment are completed appropriately, this includes a Sydney Water trade waste permit.

Trade Waste will be collected from the grease traps by a licensed service provider as per the licence agreement with Sydney Water. This will ensure that no fats and oils flow to sewer and that the depth of the solid mass remains able to be broken up for pumping and aligned with the contract with Sydney Water. The pumping at the grease traps will occur at times when the smell from this process has the minimum impact on the occupants and visitors of the site. The service will be performed by a licensed service provider who will use EPA approved liquid waste tankers. Water is removed from the waste and sent to sewer and the grease is sent for recycling.

3.3.3 Non-Recyclable Waste

Sanitary Waste

The sewerage system is not designed to dispose of sanitary waste. One sanitary waste bin will be installed in each female toilet cubicle. A specialist contractor will remove these bins from site and replace them with clean empty bins on a frequency to be determined by actual usage patterns.

Sharps

Sharps and in particular discarded syringes are becoming more common in publicly accessible areas (parks, toilets etc.). The team will be trained in how to deal with sharps they encounter during the performance of their duties however it is more desirable to provide a safe disposal option for sharps users so that there is no risk of contact. Sharps containers are not provided in public spaces. If sharps are discovered then Precinct Management should be notified immediately and the cleaners will remove and dispose of.

Other Hazardous Waste

Other Hazardous waste will be dealt with on a case by case basis. Management should be contacted if there is any uncertainty about the classification of waste.

4. Waste Volumes

General industry standards determine that an average waste volume per customer equates to 0.08kg per day of which 0.05kg is food waste. However, GBA propose to introduce a number of significant volume reducing initiatives that will reduce the storage and collection processes. To estimate the anticipated volumes by category, an analysis of a like business, that of Orso Function Centre at The Spit was conducted. However, this business currently implements traditional waste storage and collection, i.e. 240 Litre Wheelie Bins for each waste category. The results of this analysis and conversion to projections for the Gap Bluff properties are as follows -

Item	Measurement	Event Days/Year	Total/Year
Paper	1 x 60-80k Bale/Event Day	250	250
Crushed Glass	1.5 x 75 Litre Bin	250	375
Plastic	1 x 240 Litre Bin	250	250
Organic	0.5 x 120 Litre Bin	250	125
Non-Recyclable	2 x 240 Litre Bin	250	500

5. Education

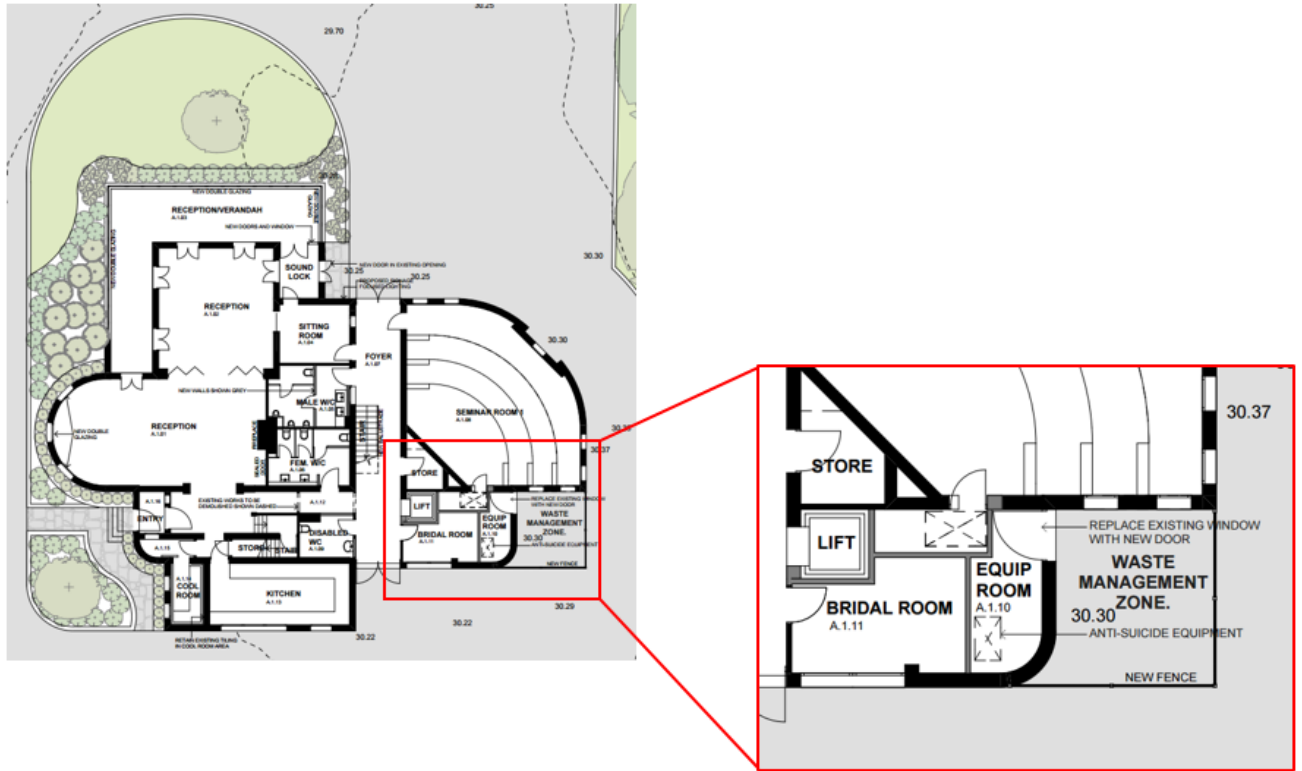
Ongoing Staff education programs for Waste Management will focus on the following:

- Explaining the benefits of the program and Gap Bluff Hospitality's determination to reduce waste and emissions
- Providing education on what can go into what bins
- Providing positive reinforcement of the recycling programs success through reporting of volumes, reductions in co² emissions, number of trees saved etc.
- Providing education on how to avoid items being mistaken as rubbish and what to do with rubbish that doesn't fit in the bins provided
- Signage located around the bin facilities

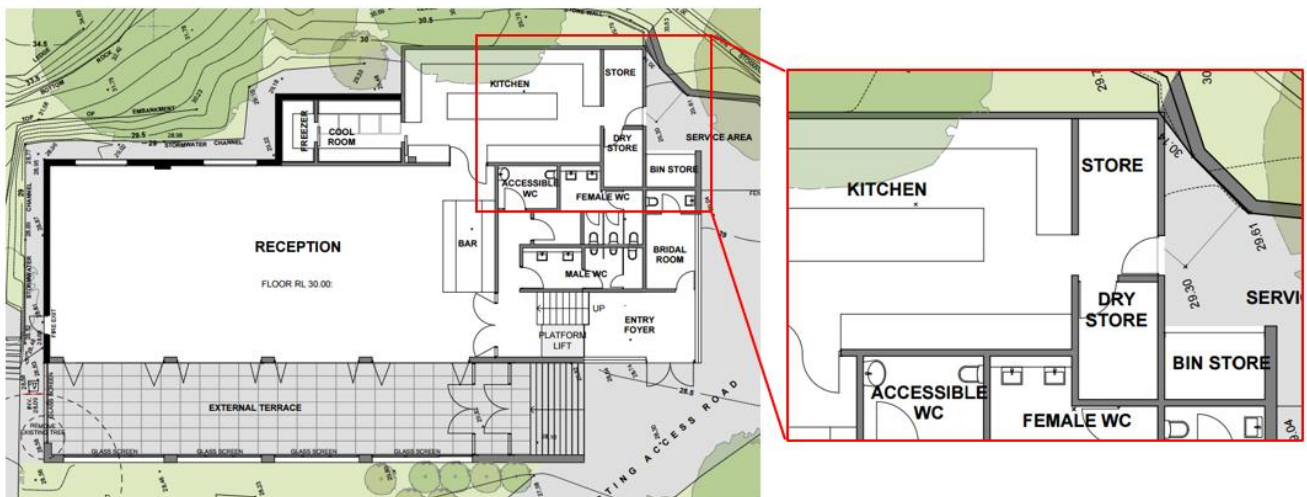
Appendix a.

Waste Management Zone

Officers Mess



The Armoury



Appendix b.

Organic Waste Disposal

Pulpmaster 4000

Pulpmaster is a food waste management system that will solve the food waste challenges of many businesses. The Pulpmaster 4000 food waste recycling system is a cutting edge solution for the recycling of food waste in commercial food business'. The Pulpmaster 4000 is approximately the size of an average washing machine and allows easy separation of food waste for recovery as a clean source for organic compost and/or for electricity generation through anaerobic digestion.



Features

- › Fabricated from stainless steel for durability
- › Organic solid and liquid waste cycles
- › SMS back to base communication
- › Tank level on LCD display
- › Tank level SMS message sent via email
- › All functions continually monitored
- › All mechanical functions in the machine
- › Category 4 safety rating
- › Splash guard
- › Automatic lid
- › Emergency stop button
- › Wash flexi hose

The Purple Bucket System

Pulpmaster has introduced the Purple Bucket System to make it easier for our customers to collect their food waste so they aren't constantly walking to the machine if their prepping bench is not close by.

Our customers love this system because it improves their time efficiency, makes it easier to place the food waste in the machine and helps keep the benches clean and clear as they aren't having to leave off cuts/food waste on the benches until they make a trip to the machine, it just goes straight into the bucket and straight into the machine. The striking purple colour makes it easier for staff to find the buckets in the kitchen and it is also the national standard colour for organics.



Appendix c.

Cardboard Compactor

Small Single Chamber Balers 50-80Kg Bales

This 1.5kW small footprint baler generates 4 tonnes of pressure and can produce bales weighing between 50-80kg depending on the material. This small baler is ideal for baling of cardboard or polythene as it combines its small size with incredible strength and durability.

It is supplied with a trolley for ease of handling the bales and once tied no heavy lifting is required. This baler features safety interlocks and is fully CE compliant. The baler requires a solid, level base on which to be sited.

Features/Benefits

- Volume reductions of up to 90%
- Easy bale handling
- Bale weight up to 80kg
- 25 sec cycle time
- Ergonomic filling height
- Material retainers for prevention of spring back
- Triple encoded safety devices
- Low operating noise, less than 80dB
- Includes bale trolley
- CE compliant



envirotech.com

Appendix d.

Glass Waste Disposal



BOTTLECRUSHER
The Leader in Bottle Crushing Technology

+61 (8) 9200 6295

HOME

OUR PRODUCTS

FOR YOUR VENUE

TESTIMONIALS

COMPANY

SUSTAINABILITY

CONTACT US

COMPACT BAR

Reduce the amount of space you need to store empty bottles. Reduce the number of waste bins you need - from twenty bins to five.

The Compact Bar BottleCrusher is able to crush bottles as fast as they can be fed into the machine. It handles all types of glass including beer, wine, champagne and spirit bottles.

The Compact Bar unit comes complete with a sturdy waste trolley and four spare waste trays making trips to the bin more efficient. Each waste tray holds approximately 50 wine bottles or 140 beer bottles and each trolley will safely transport 3 waste trays. The waste tray holds 16kg of crushed glass and complies with accepted occupational health and safety standards.

Eliminate noise complaints from nearby residents

The Compact Bar will remove the need to tip empty glass bottles into bins, eliminating bottle collection noise which can upset nearby residents.

Features

- Smallest and quietest in the range of BottleCrusher machines
- Stainless steel finish allows for seamless integration into any setting
- Quiet enough to be operated during service periods. Noise levels do not exceed that normally generated in a hospitality venue
- Moved easily between locations due to the lockable wheels. Can be transported simply for functions and special events
- Ideal for bars, restaurants and cafes



OUR PRODUCTS

- Compact Bar
- Space Saver
- BottleMaster

QUICK LINKS

- Watch the video
- Download Brochure
- Contact Us

TESTIMONIALS

"We purchased several BottleCrushers to help us easily dispose of waste glass, both in our packaging area and hospitality venues. They have helped us substantially reduce the number of glass bins required, saving valuable space." – Alex Troncoso...

[Little Creatures Brewery](#)

Appendix e.

Used Cooking Oil Collection

